



# SR 408 PD&E STUDY

EASTERN EXTENSION FROM SR 50 TO THE SR 50/SR 520 INTERSECTION

Project Identification Number: 408-254

<https://www.cfxway.com/408study>

Newsletter 5 - April 2018

## PD&E STUDY OVERVIEW

In May 2015, the **Central Florida Expressway Authority (CFX)** began a Project Development and Environment (PD&E) Study for the proposed SR 408 (Spessard L. Holland East-West Expressway) Eastern Extension from the SR 50 interchange to the SR 50/SR 520 Intersection in East Orange County.

The objective of this study is to help CFX reach a decision on the type, design and location of the potential eastern extension of SR 408. All factors related to the concept design and location of the proposed expressway must be considered. These include transportation needs, social impacts, economic factors, environmental impacts, engineering analysis and right-of-way requirements.

## PROJECT UPDATE

CFX initiated a PD&E Study in order to study potential solutions for development of a new transportation corridor in eastern Orange County. Five main corridors and seven additional combinations were evaluated. The corridors were evaluated in terms of compliance with Purpose and Need, environmental impacts, socio-economic impacts, engineering considerations and public comments. These corridors were presented at the February 2017 Public Corridor Meeting. The results of the evaluation indicate that Corridor 4 is the most balanced corridor in terms of meeting the needs of the project and minimizing impacts. Preliminary alternatives developed within Corridor 4 were presented to the public at the June 2017 Alternatives Public Workshop. All public comments received have been summarized, analyzed and included in the evaluation of the study alternatives. The next step is our project Public Hearing.

## PUBLIC HEARING

The Public Hearing is being held as part of the study effort for the potential eastern extension of SR 408 from the State Road 50 interchange to the SR 50/State Road 520 intersection in east Orange County. The purpose of this Public Hearing is to provide the public with an opportunity to review and comment on the recommended alternative and proposed improvements. Representatives from the PD&E Study team are available to answer your questions concerning the presentation, display boards and the alternatives evaluation process and results.

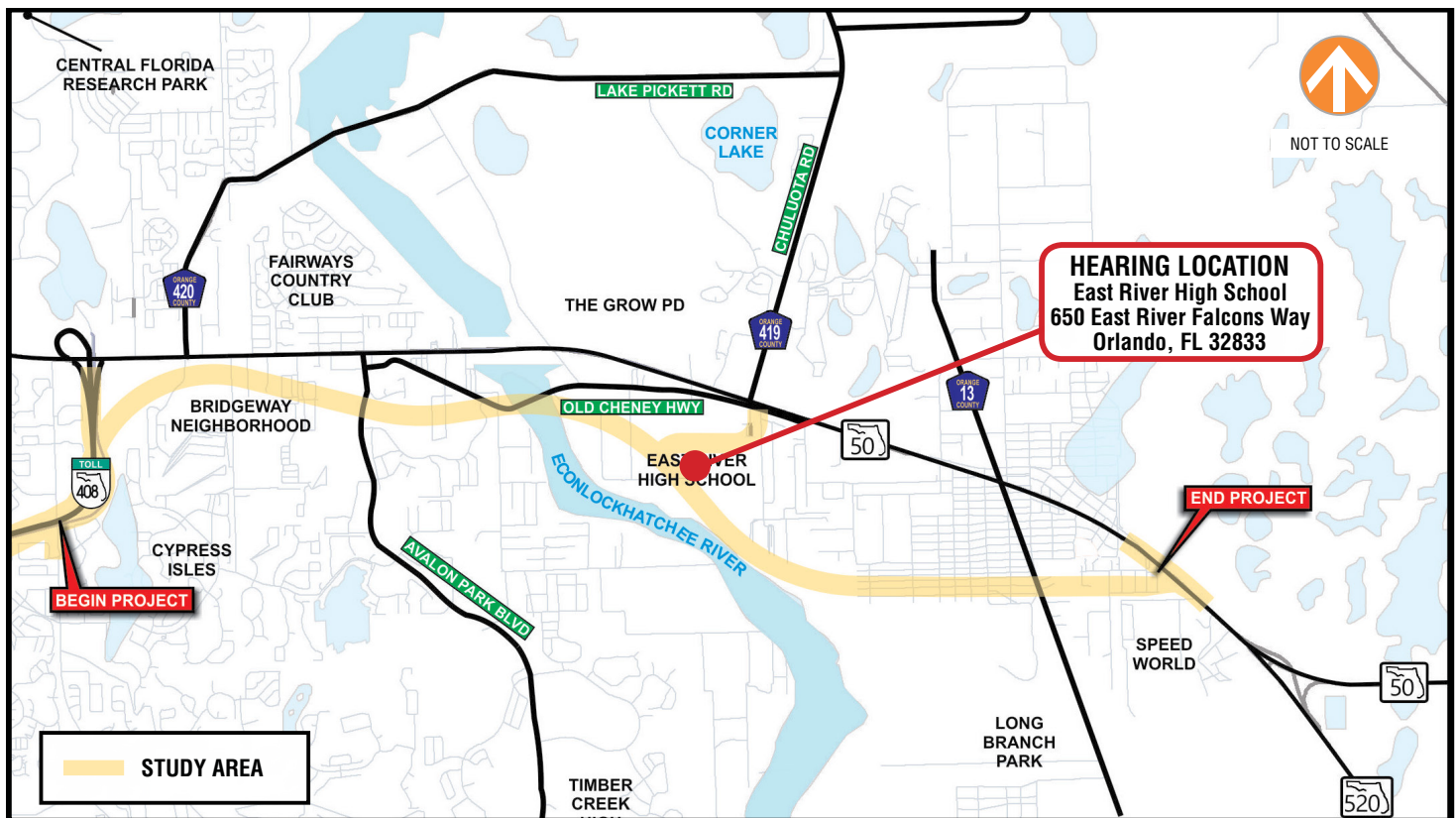
On **April 26, 2018**, at **East River High School (650 East River Falcons Way, Orlando, FL 32833)**, the hearing will begin as an open house at **5:30 p.m.**, with a formal presentation at **6:30 p.m.**, followed by a public comment period. Participants will be able to review project information and discuss the project with project staff during the meeting.

## PUBLIC INVOLVEMENT

One of the most important aspects of a PD&E Study is public involvement. Your input is important to the success of the project. Information received as a result of this public hearing, along with detailed analyses of the alternatives, will form the basis for the selection of the recommended alternative and will be documented in the PD&E Study.

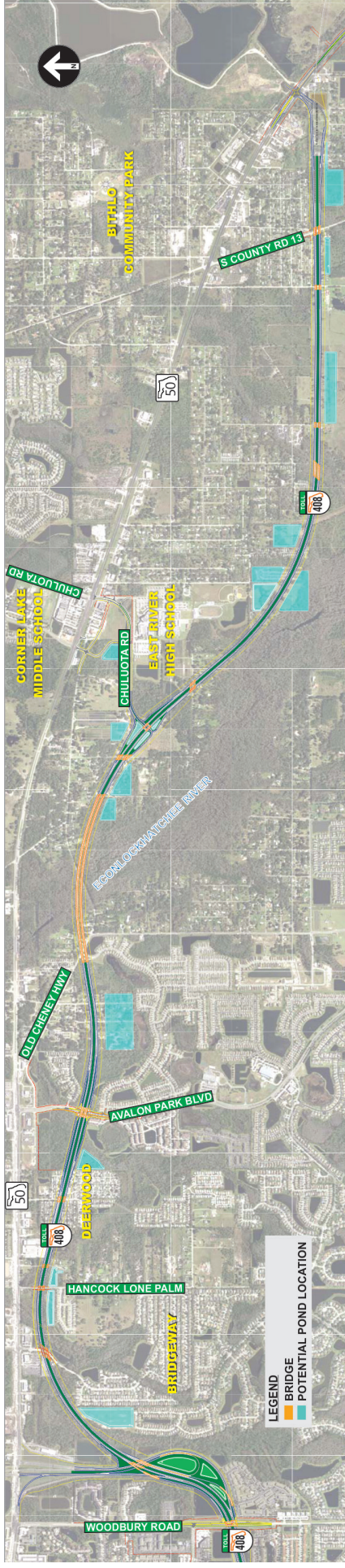
You may submit comments for the public record by:

1. Make a verbal comment at the public hearing tonight.
2. Complete a comment form and drop into the comment box.
3. Email or mail comments postmarked on or before May 7, 2018.
4. Submit using the project website: <https://www.cfxway.com/408study>.



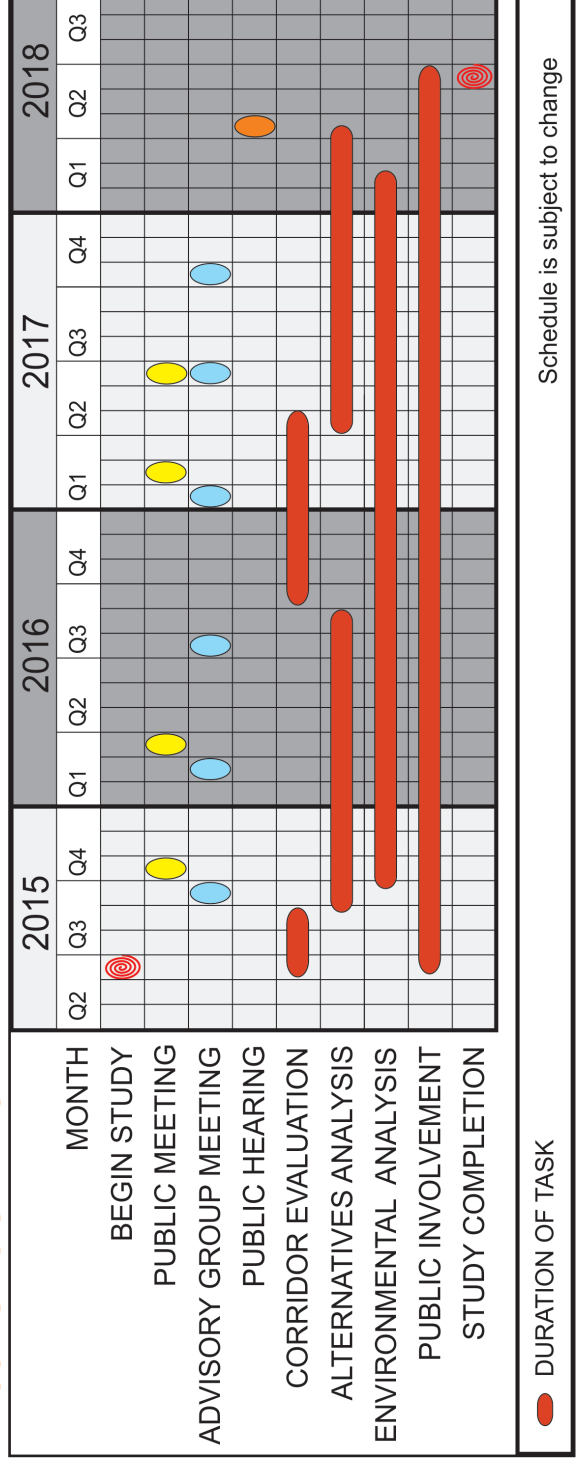


# PROJECT ALTERNATIVE



The recommended alternative was refined after additional engineering and environmental analyses were completed, as well as based on the public comments received at the Alternatives Public Workshop held in June 2017. The objective of this refinement is to either avoid or minimize impacts, and this alignment is based on minimizing those impacts to residences and environmental lands while addressing operational and other engineering considerations. The recommended alternative that resulted from the environmental and engineering analysis, as well as public input, is shown in the map above and is on display at this meeting as well as the project's website. We invite you to view the displays and provide your comments on the comment forms provided. A presentation will be given at the auditorium that will summarize the efforts of this PD&E Study. Following this presentation, interested persons will have an opportunity to provide verbal comments for the record.

## PROJECT SCHEDULE



## PROJECT CONTACT

For project information, to provide comments regarding the study or to request a meeting with your group, please contact:

**Valerie Tutor**

Public Information Officer

Phone: 941-504-9440

Email: 408study@CFXway.com

Public participation is solicited without regard to race, color, national origin, age, sex, religion, disability or family status. Persons who require special accommodations under the Americans with Disabilities Act or persons who require translation services, free of charge, should contact Valerie Tutor, Public Information Officer, via email: 408study@CFXway.com or phone: (941) 504-9440. Para más información en español acerca del proyecto, por favor comuníquese con Alicia Gonzalez al 786-280-6645 o por correo electrónico agonzalez@mrngmiami.com.