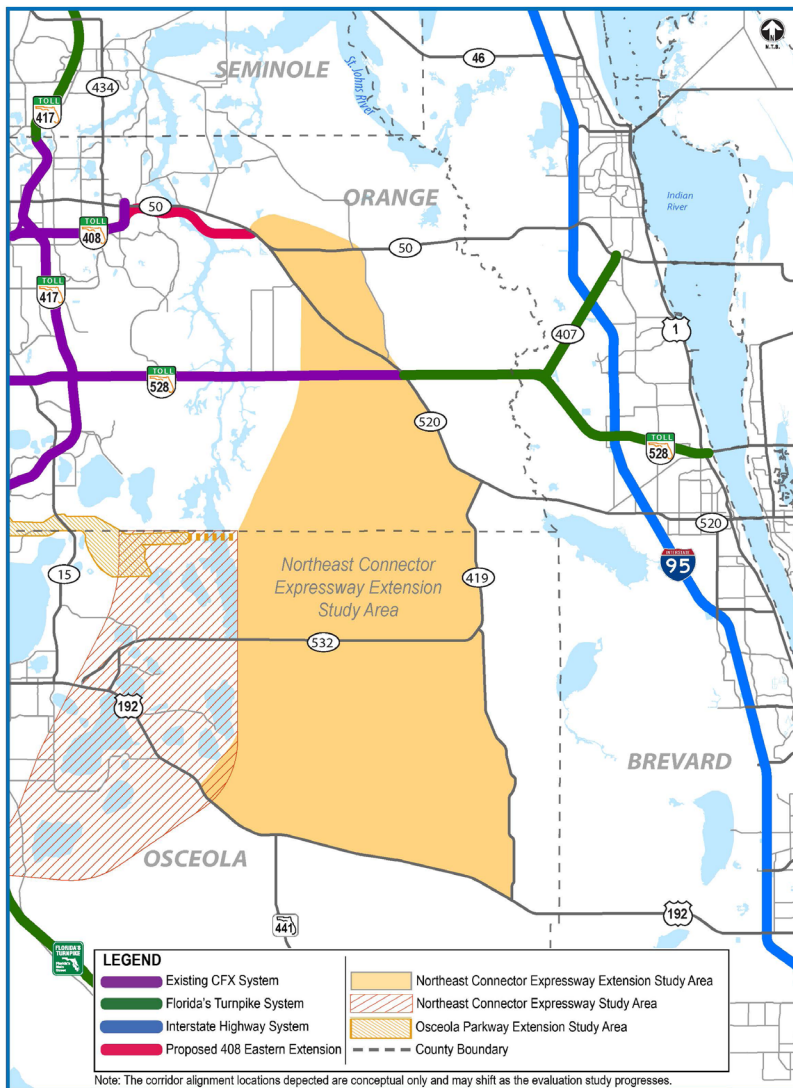


A NEW STUDY IS UNDERWAY

The Central Florida Expressway Authority (CFX) is conducting a Concept, Feasibility and Mobility Study of the Northeast Connector Expressway Extension. Below are details about the study and resources to keep you informed of the project's progress. The study is scheduled to complete in April 2019.



PROJECT DESCRIPTION

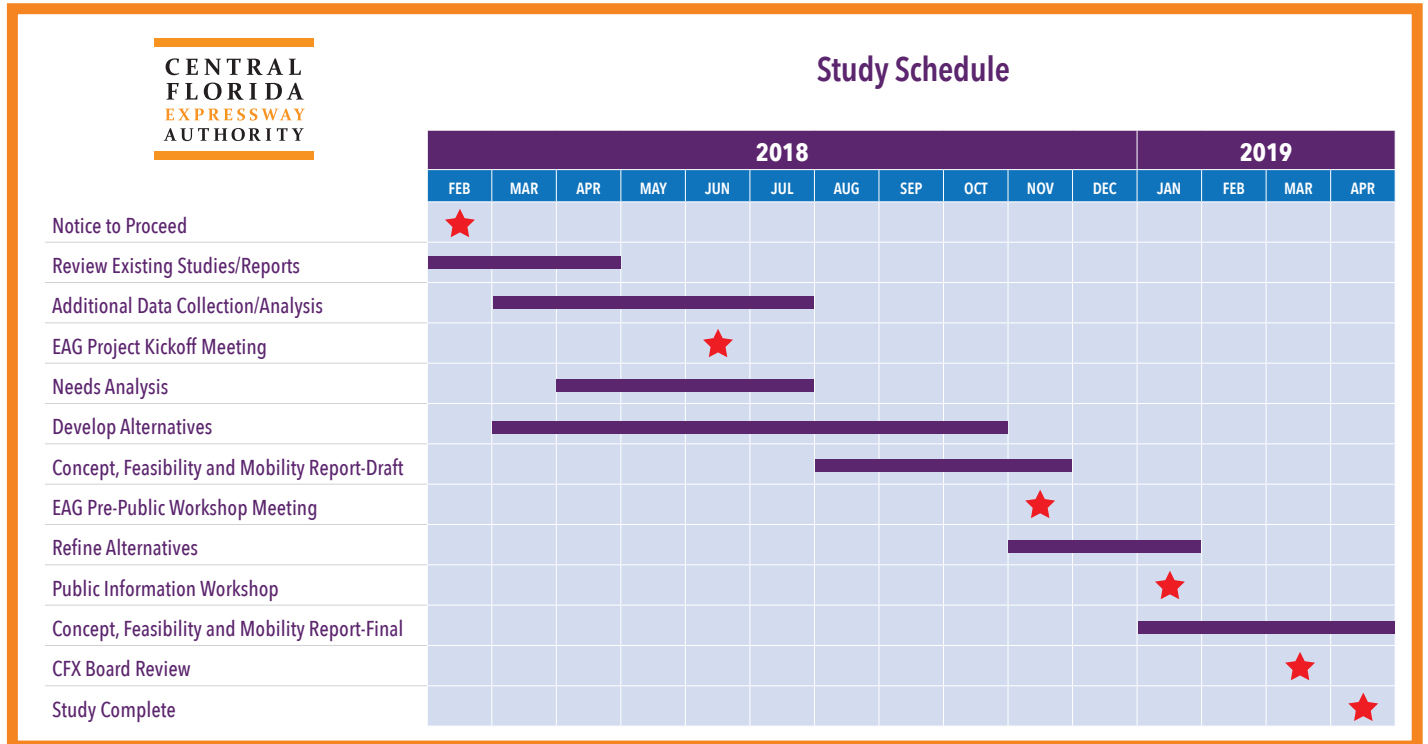
The proposed Northeast Connector Expressway Extension study area generally extends from the vicinity of the existing State Road (SR) 50/SR 520 intersection in Orange County south to US 192 in Osceola County, a distance of approximately 25 miles. The study area is generally bound by the Econlockhatchee River to the west and Deer Park Road/Nova Road/SR 520 to the east. This new transportation corridor is represented as "Corridor I" in the East Central Florida Corridor Task Force Summary Report.

STUDY OBJECTIVE

The objective of this Concept, Feasibility and Mobility Study is to determine if a limited access, toll expressway corridor is viable and fundable in accordance with CFX policies and procedures. The study will include the evaluation and documentation of the physical, natural, social and cultural environment within the corridor and the potential impacts associated with the various mobility alternatives. Transportation demands for the corridor will be determined and a range of transportation mobility options and programs will be developed to adequately meet the future demands.

GOALS OF THE PROJECT

The goal of the Northeast Connector Expressway Extension is to enhance north-south regional connectivity and mobility by providing connections between existing and future east-west corridors within the study area including the SR 408 Eastern Extension, SR 520, SR 528 (Martin Andersen Beachline Expressway), and US 192 (E Irló Bronson Memorial Highway). These connections will enhance regional connectivity, provide greater mobility for the area's growing population and economy, and provide for the incorporation of future transit options.



Visit the study webpage at:
www.cfxway.com/agency-information/plans-studies/project-studies/northeast-connector-expressway-extension

PARTICIPATING IN THE STUDY

Public involvement will be an integral part of the assessment process. CFX anticipates holding public meetings in both Orange and Osceola counties during this study. In addition, meetings with an Environmental Advisory Group (EAG) and various stakeholders, including neighborhoods and special interest groups, will be held throughout the life of the study.

TO FIND OUT MORE ABOUT THE STUDY, CONTACT: **Kathy Putnam**
 Public Involvement Coordinator
 Phone: (407) 802-3210
 Email: ConceptStudies@CFXway.com

CENTRAL FLORIDA EXPRESSWAY AUTHORITY
 4974 ORL Tower Road
 Orlando, FL 32807
 Phone: (407) 690-5000
 Fax: (407) 690-5011
 Email: Info@CFXway.com



Public participation is solicited without regard to race, color, national origin, age, sex, religion, disability or family status. Para más información en español acerca del proyecto, por favor comuníquese con Alicia Arroyo al 407-509-0231 o por correo electrónico Alicia.Arroyo@QCAusa.com.