

PROJECT DESCRIPTION

The Central Florida Expressway Authority (CFX) is conducting a Project Development and Environment (PD&E) Study for the proposed Poinciana Parkway Extension. The study will look at extending the Poinciana Parkway to County Road 532 at the Osceola County/Polk County line.



PROJECT GOALS

The goals of this proposed 3-mile, limited-access facility include improving the roadway connections from CR 532 to the greater Poinciana area, enhancing mobility of the area's growing population and economy, relieving congestion on local roads and promoting regional connectivity.

PROJECT BACKGROUND

An extension of the Poinciana Parkway to Interstate 4 (I-4) in Osceola County has been identified as a need in several local, long-range and master plans. As part of an interlocal agreement, the Osceola County Expressway Authority (OCX) requested that CFX incorporate the parkway extension and remaining portions of the OCX 2040 Master Plan into the CFX 2040 Master Plan.

CFX recently completed a Concept, Feasibility and Mobility Study for the Poinciana Parkway Extension that concluded the project may be viable under CFX criteria. The CFX Board approved that study's findings and is moving forward with a Project Development & Environment (PD&E) study to determine a refined, preferred alternative.

The PD&E study will refine and evaluate the alternatives from the concept study in greater detail. The project is being broken into phases for further evaluation, with the CFX PD&E study focusing on the extension to CR 532. A later phase, to be coordinated through the Florida Department of Transportation, will provide a connection to I-4, either at State Road 429 or at CR 532.

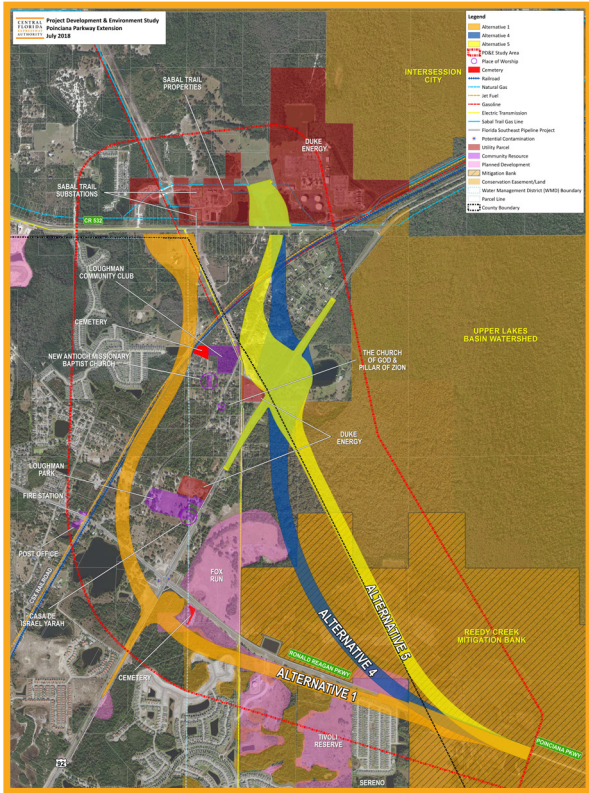


STUDY AREA



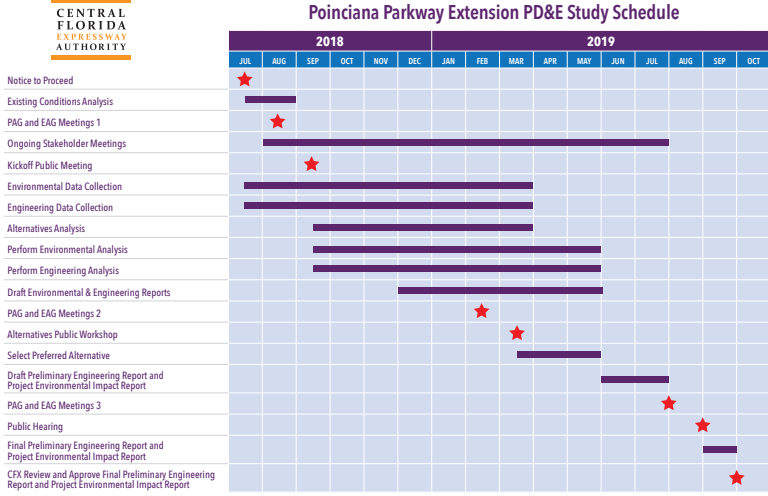
PUBLIC INVOLVEMENT

Public involvement and community engagement will be a crucial component of this study. We value your input. CFX will provide multiple opportunities for participation, including a public meeting and public hearing. Community groups can request a presentation via the www.CFXWay.com website or by emailing Public Involvement Coordinator Mary Brooks at ProjectStudies@CFXWay.com. You're also welcome to submit your comments via the website or project email address. And follow the study on Facebook for updates.



STUDY SCHEDULE

The PD&E study began in July 2018 and is expected to last 15 months. A graphic of key study milestones is shown here.



TO FIND OUT MORE ABOUT THE STUDY, CONTACT:

CENTRAL FLORIDA EXPRESSWAY AUTHORITY

Mary Brooks, Public Involvement Coordinator
 Phone: (407) 802-3210
 Email: ProjectStudies@CFXway.com

4974 ORL Tower Road
 Orlando, FL 32807
 Phone: (407) 690-5000
 Fax: (407) 690-5011
 Email: Info@CFXway.com

You may also visit the study's webpage at:

<https://www.cfxway.com/agency-information/plans-studies/project-studies/poinciana-parkway-extension-pdel>

 @PoincianaPkwyExt

Public participation is solicited without regard to race, color, national origin, age, sex, religion, disability or family status. Para más información en español acerca del proyecto, por favor comuníquese con Alicia Arroyo al 407-509-0231 o por correo electrónico Alicia.Arroyo@QCAusa.com.