

The logo for the Central Florida Expressway Authority is centered in the upper portion of the image. It consists of a white rectangular box with two horizontal orange bars, one above and one below the text. The text is arranged in four lines: 'CENTRAL' and 'FLORIDA' in black, 'EXPRESSWAY' in orange, and 'AUTHORITY' in black. The background of the entire slide is a photograph of a multi-level highway interchange with concrete overpasses and a grassy embankment under a clear blue sky.

**CENTRAL  
FLORIDA  
EXPRESSWAY  
AUTHORITY**

# **Poinciana Parkway Extension Project Development & Environment Study**

Nicole Gough, Dewberry

Mary Brooks, Quest Corporation of America

Clif Tate, Kimley-Horn and Associates

**— August 15, 2018 —**

# Poinciana Parkway Extension PD&E Study

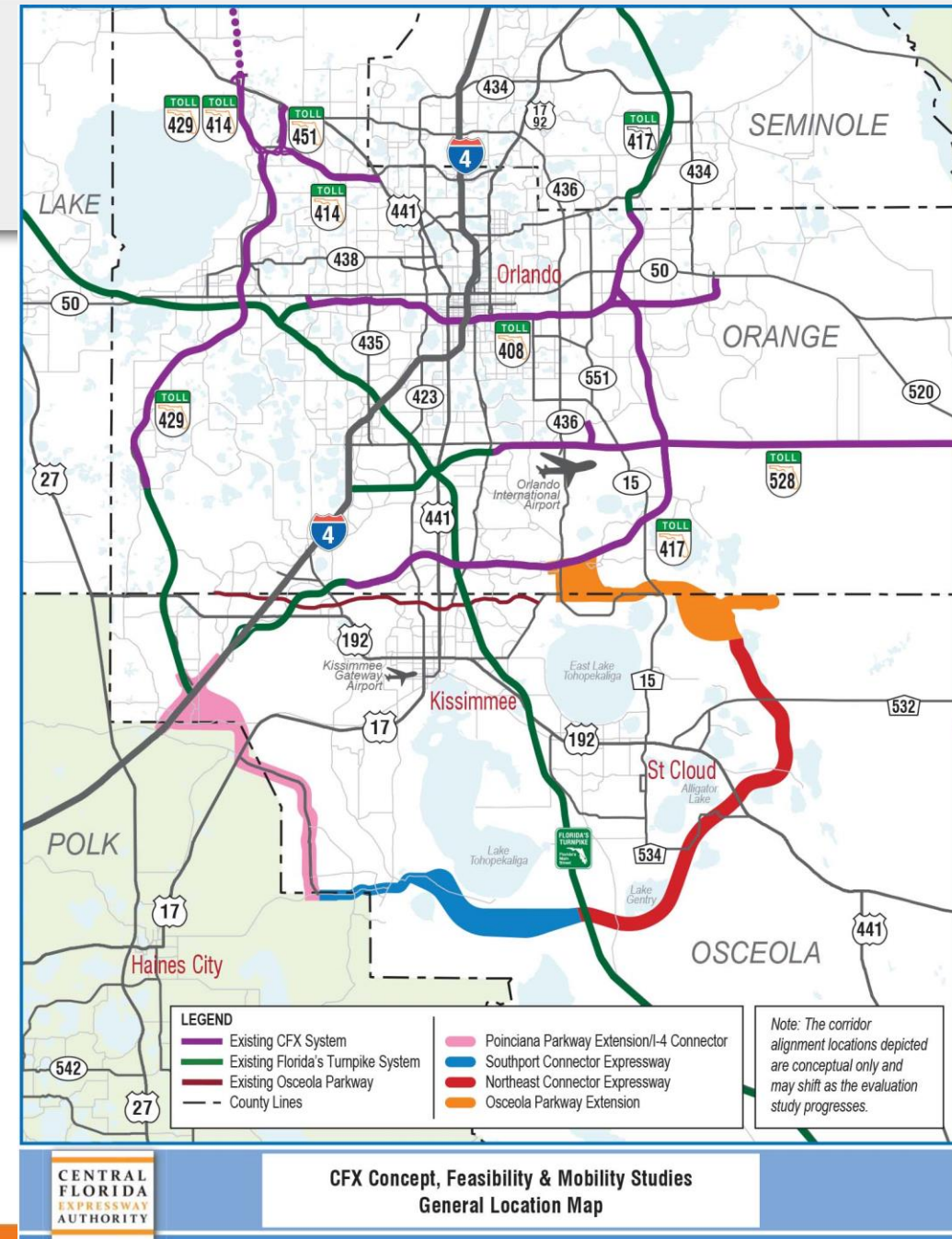
This meeting, project, or study is being conducted without regard to race, color, national origin, age, sex, religion, disability or family status. Persons wishing to express their concerns relative to compliance by the Central Florida Expressway Authority (CFX) with Title VI may do so by contacting:

Mary Brooks  
Public Involvement Coordinator  
4974 ORL Tower Road  
Orlando, FL 32807  
407-802-3210  
[Projectstudies@CFXway.com](mailto:Projectstudies@CFXway.com)

All inquiries or complaints will be handled according to CFX procedure and in a prompt and courteous manner.

# Background

- **2005** – Osceola County Comprehensive Plan: New corridors around growth boundary
- **2012** – Osceola County Expressway Authority (OCX): 2040 Master Plan
- **2016** – FDOT designated OCX “beltway” as SR 538
- **2016** – Poinciana Parkway Connected to US 17/92
- **March 2018** – CFX finished Feasibility Studies
  - Authorized Poinciana Parkway Extension PD&E study
- **July 2018** – PD&E Study began



# Advisory Group Roles

## Environmental

- Natural environment analysis;
- Special advisory resource;
- Providing environmental impact input on project alternatives;
- Local knowledge, issues and concerns regarding environmental impacts.

## Project

- Mobility analysis;
- Special advisory resource;
- Providing input on project alternatives;
- Local knowledge, issues and concerns.

# Feasibility Study Public Involvement: Environmental & Project Advisory Groups

**EAG** – July 2017 & January 2018

**PAG** – July 2017 & February 2018



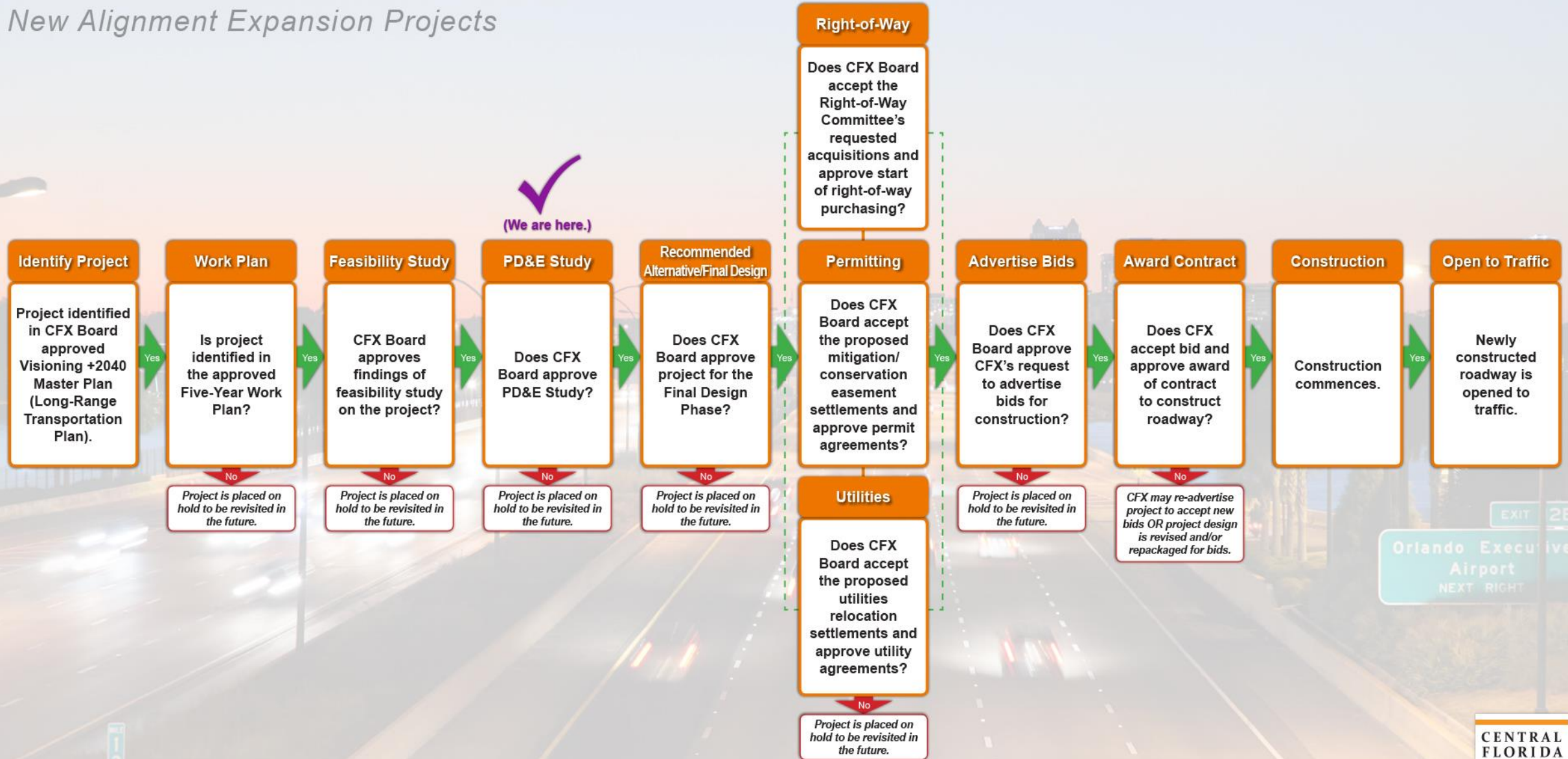
# Feasibility Study Public Involvement: Public Meetings



6 Meetings  
1,300 Participants  
630 Comments

# PROJECT DEVELOPMENT PROCESS

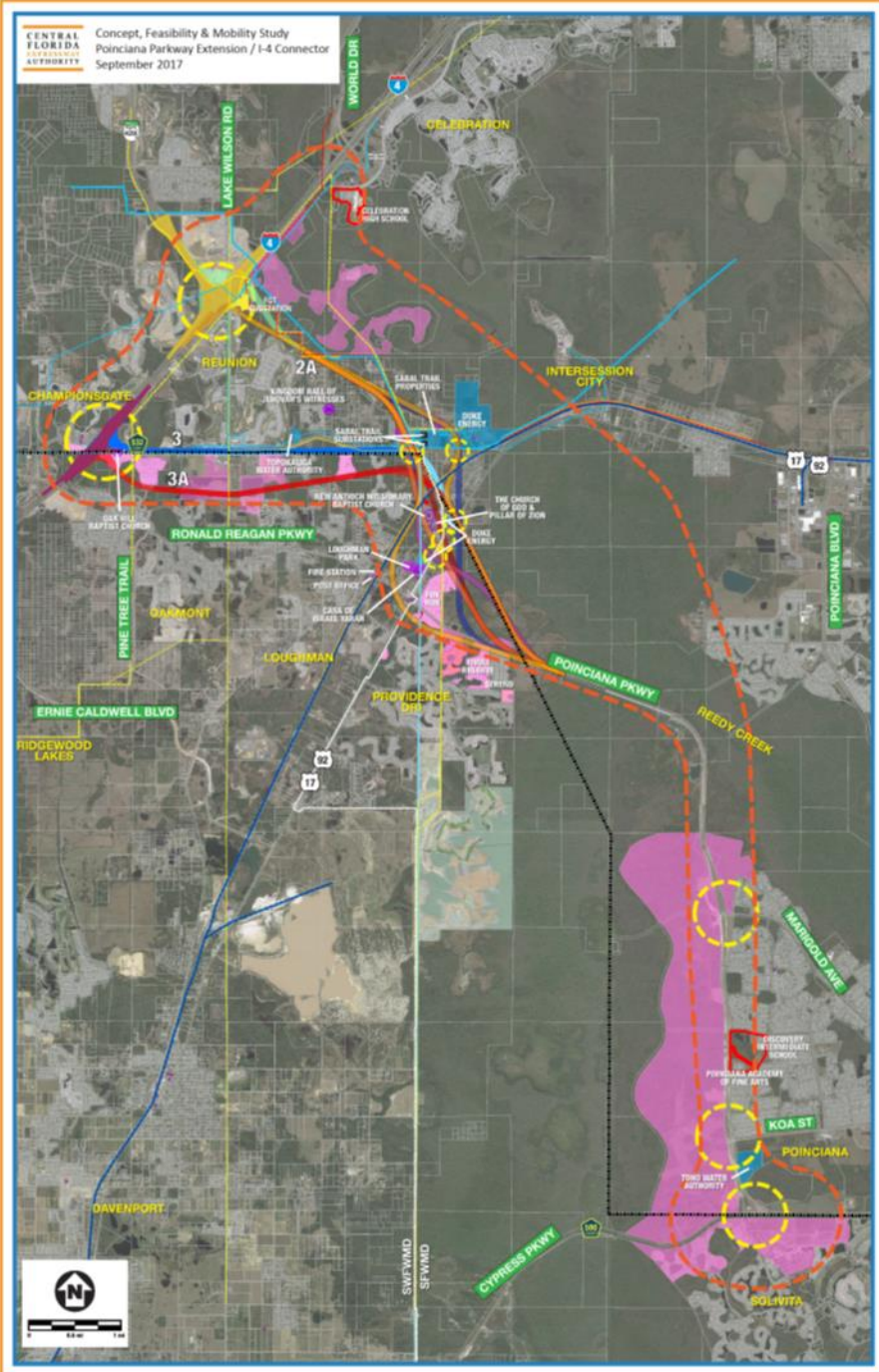
## New Alignment Expansion Projects



EXIT 2B  
Orlando Executive Airport  
NEXT RIGHT

# Poinciana Parkway Extension Feasibility Study

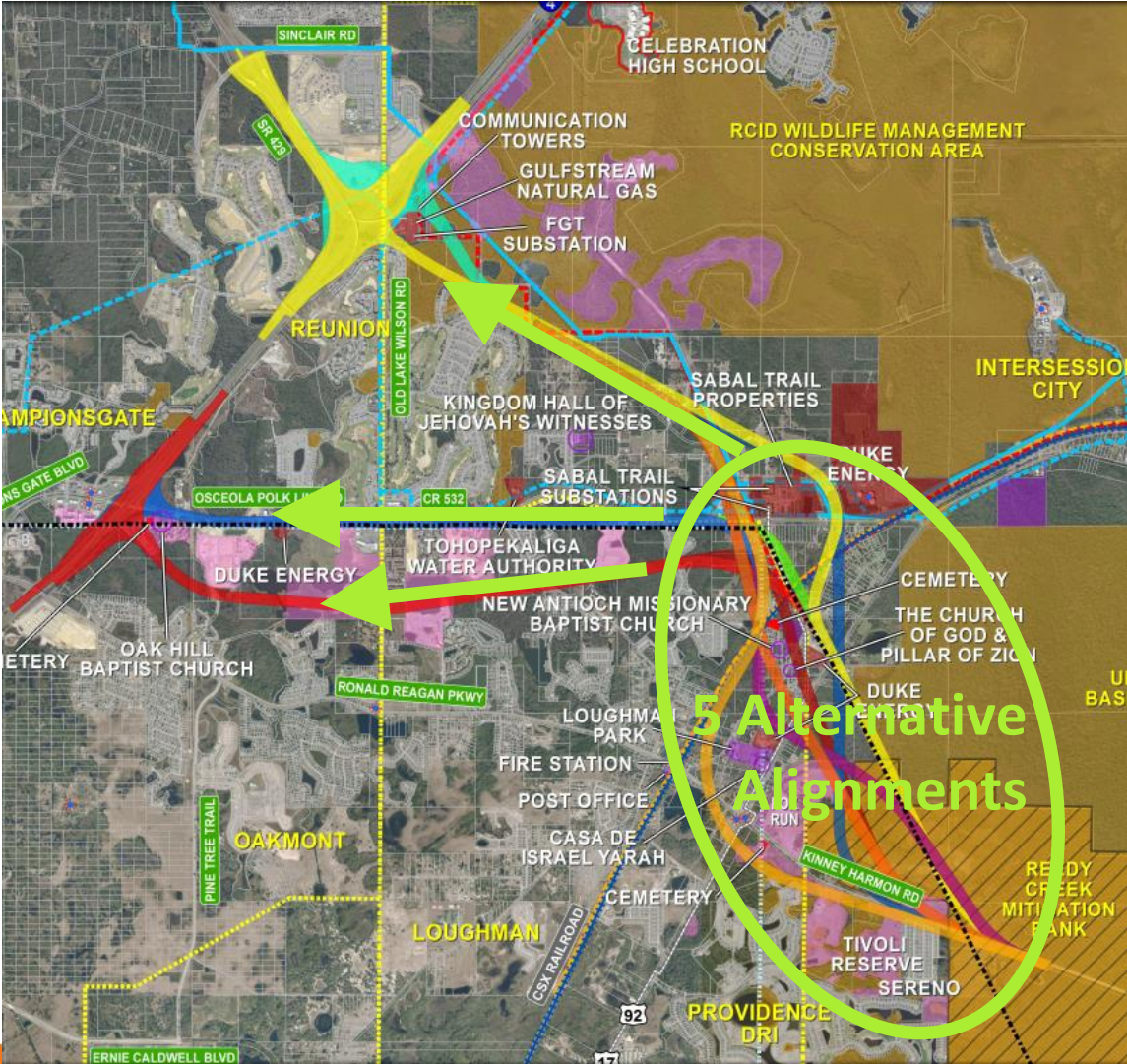
- Widen Poinciana Parkway
- Evaluated Alternatives: Parkway to I-4





# Poinciana Parkway Extension Feasibility Study and Findings

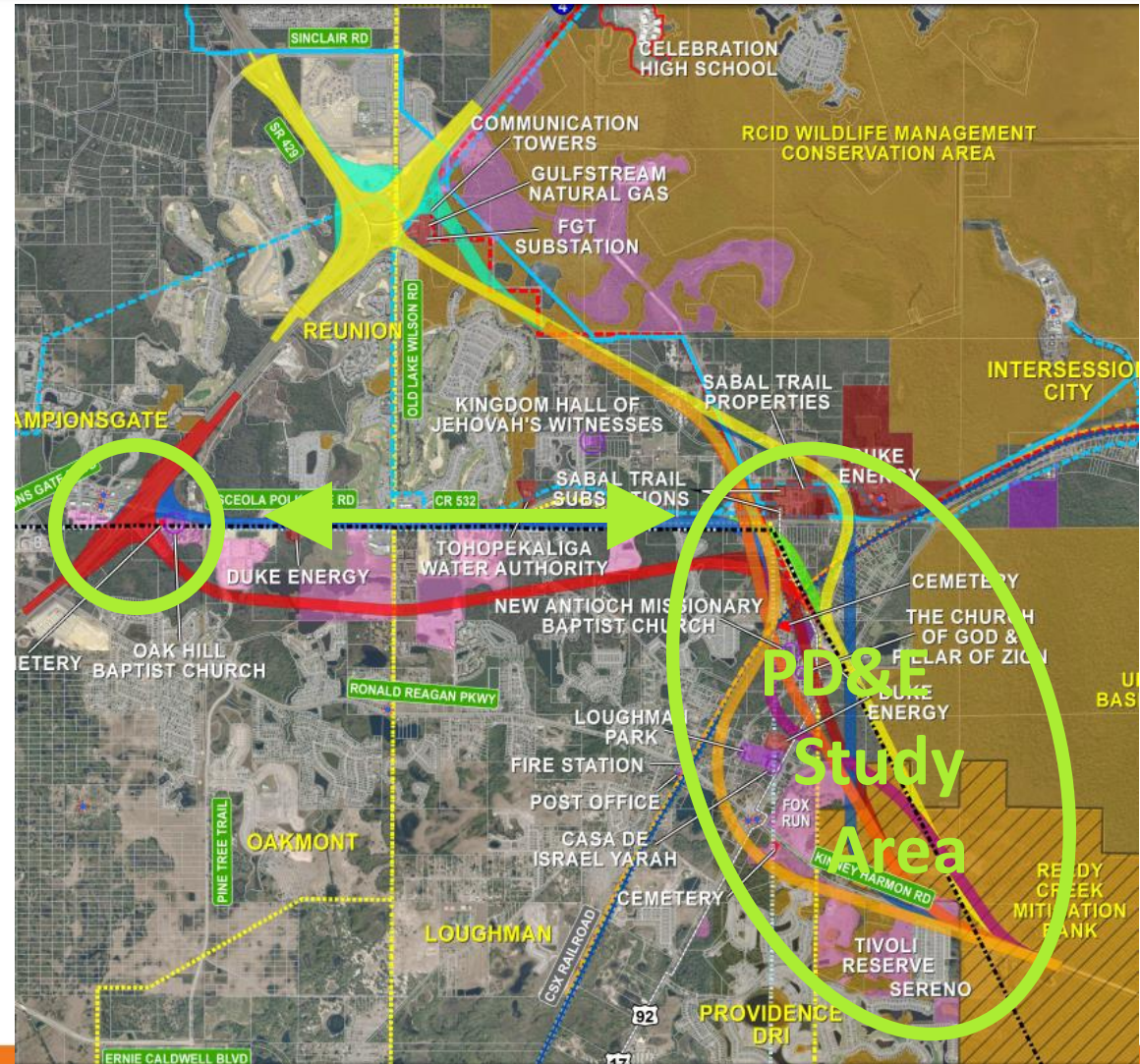
- 5 alternative alignments: Parkway to CR 532
- 3 alternative alignments: CR 532 to I-4
- Project may be viable (CFX criteria)
- Phase I: Connection to CR 532



# Benefits of Phased Approach

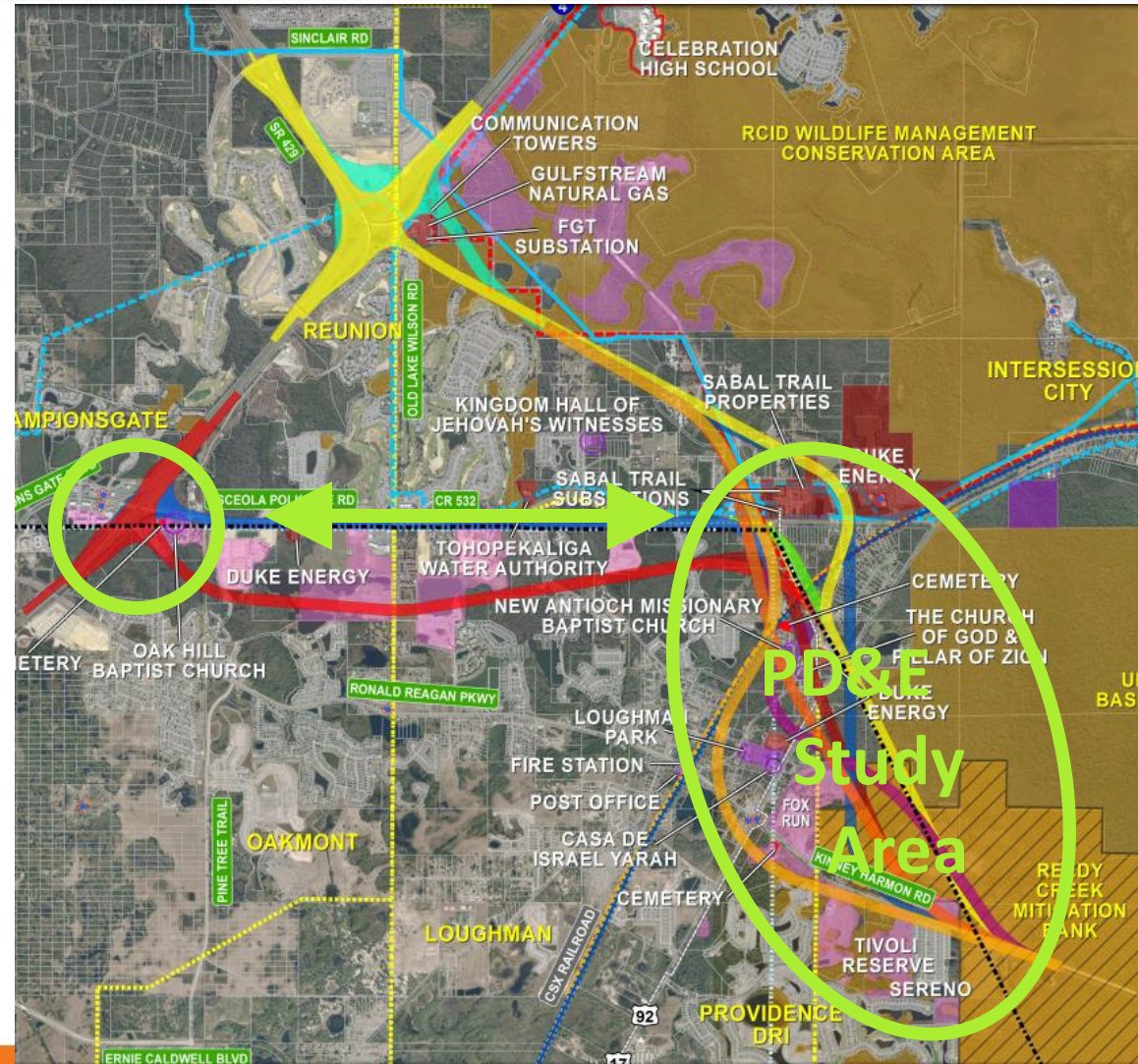
## North end of bridge to CR 532

- I-4 connection: Requires FDOT and FHWA approval
  - Consistent with I-4 plans
  - Years to determine
- Project advancement: Extension to CR 532
- Improvements by others:
  - Osceola County: Widen CR 532
  - FDOT/Osceola County: I-4/CR 532 interchange



# Poinciana Parkway Extension PD&E Study

- Focus: Parkway bridge to CR 532
- Alternative alignments: Compatible with future I-4 connection (SR 429 or CR 532)
- Consider improvements by others
  - Widen CR 532
  - I-4/CR 532 interchange



# Poinciana Parkway Extension

## Purpose and Need

- Enhance mobility: CR 532 to Parkway
- Reduce roadway congestion and delays
- Expand regional connectivity
- Provide transportation infrastructure for planned growth
- Provide consistency with local plans and policies
- Enhance safety

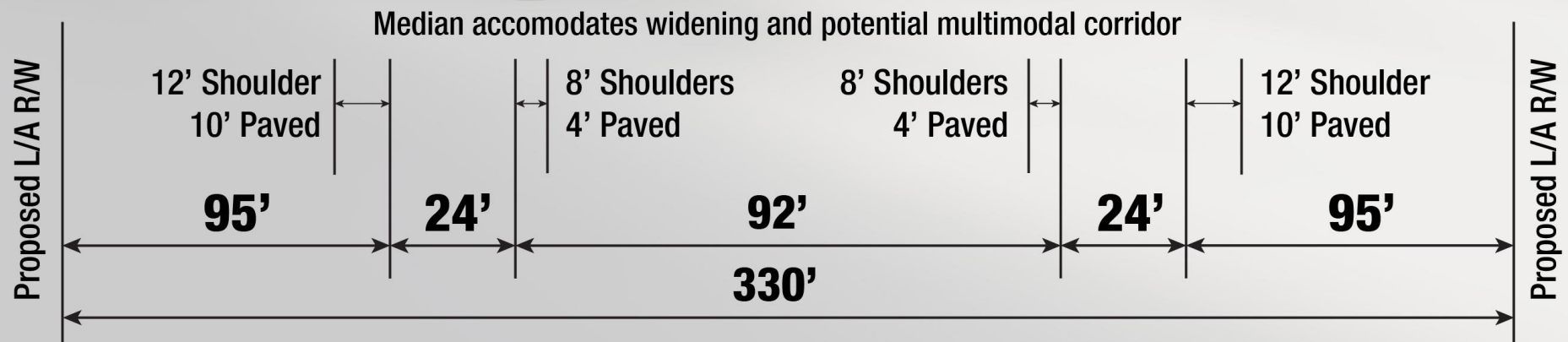
**EAG and PAG input: Contribute to developing  
Purpose and Need**

# Study Methodology

- Follow FDOT PD&E Manual
- Project Environmental Impact Report (PEIR) (CFX approval)
- Analyze and document potential impacts
  - Physical
  - Natural
  - Social
  - Cultural

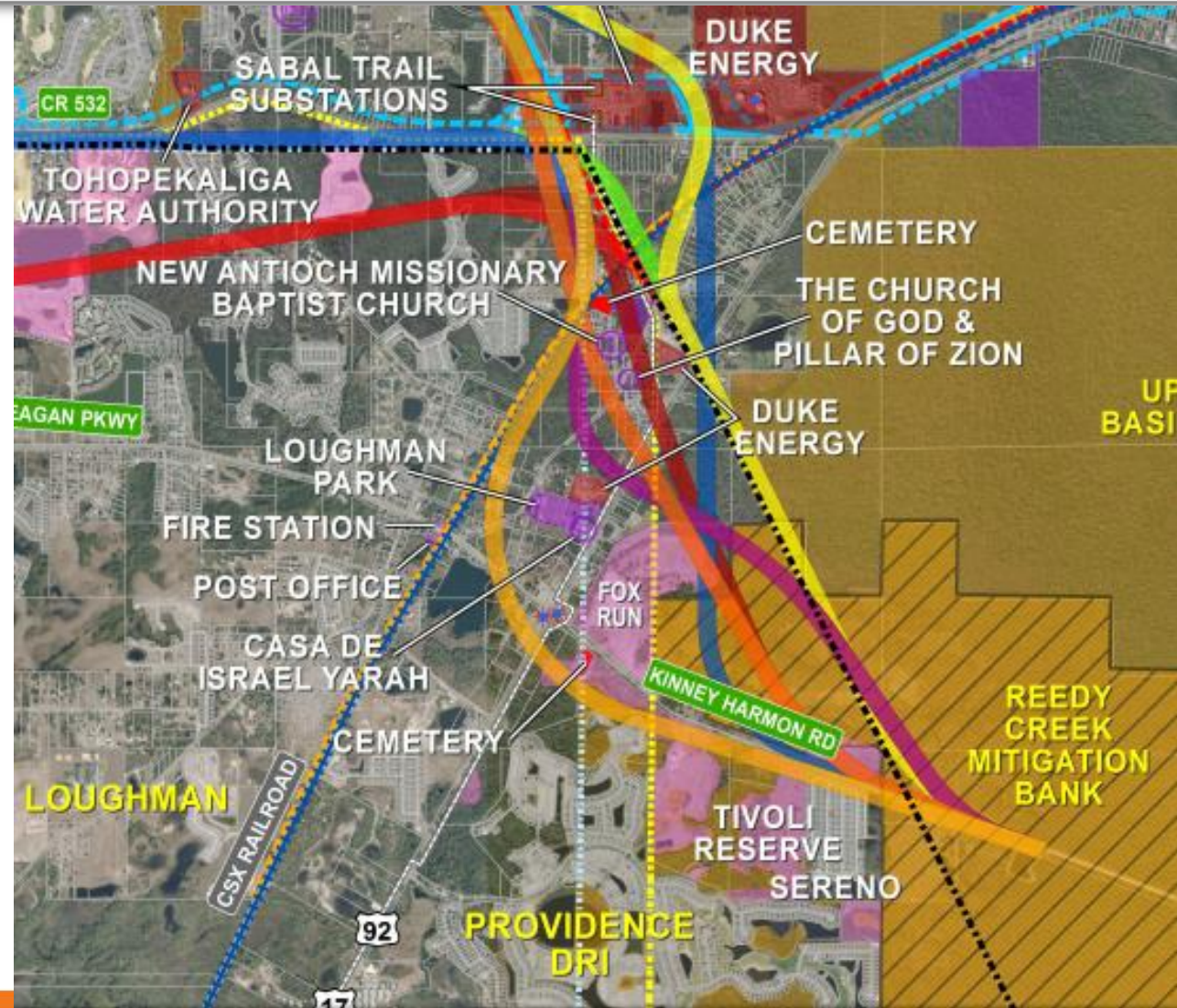


# Poinciana Parkway Extension Typical Section on New Alignment



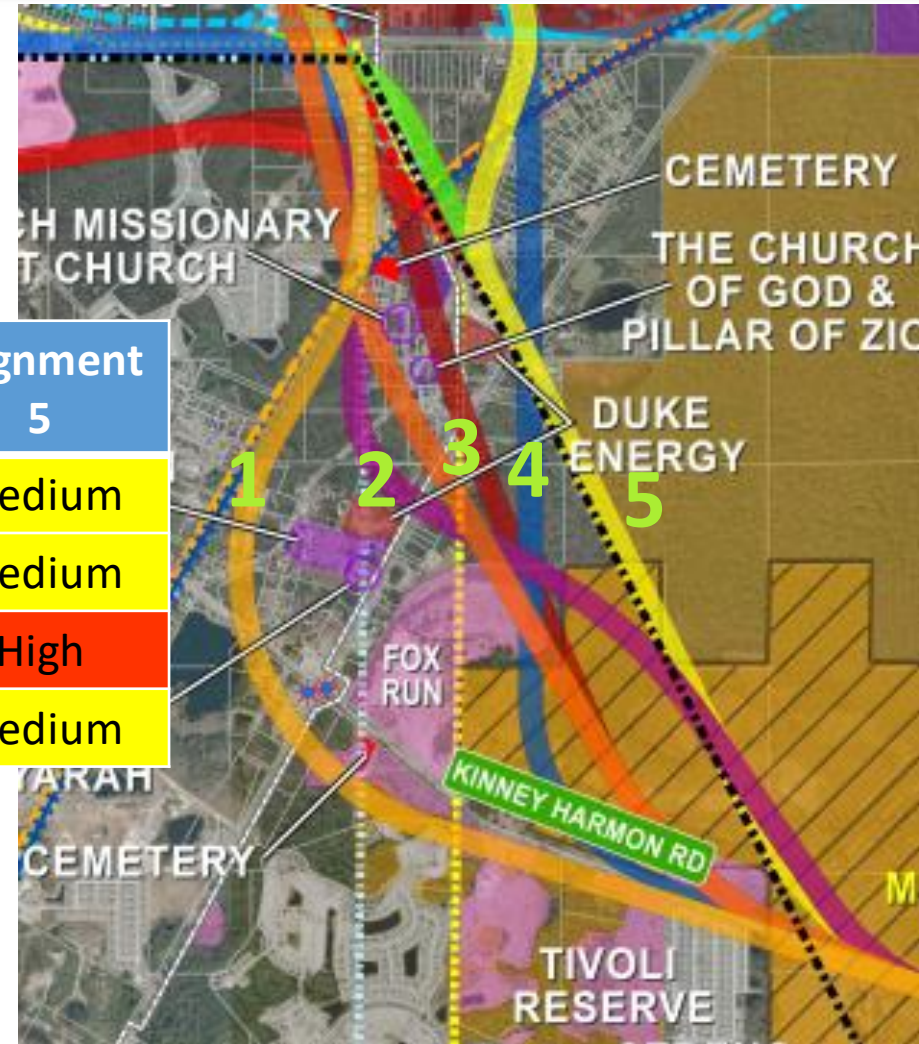
# Poinciana Parkway Extension Constraints

- Mitigation Bank
- Wetlands
- Cemeteries
- Places of Worship
- Loughman Park
- Loughman Community
- Power Substations
- Gas Transmission Substations
- Businesses and Residences



# Poinciana Parkway Extension Anticipated Impacts

From north end of bridge  
to CR 532



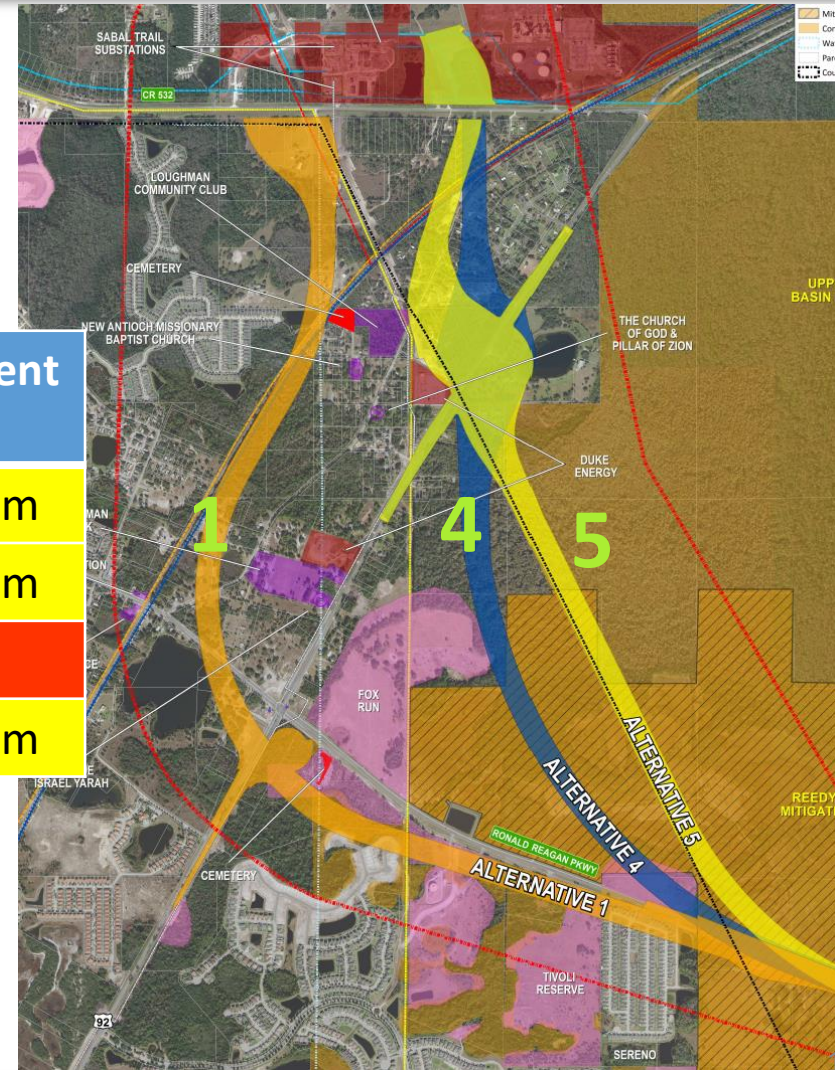
Evaluation Criteria	Alignment 1	Alignment 2	Alignment 3	Alignment 4	Alignment 5
Physical	Medium	Medium	Medium	Medium	Medium
Cultural	Medium	Medium	Medium	Medium	Medium
Natural	Medium	High	High	High	High
Social	High	High	High	Medium	Medium



# Poinciana Parkway Extension

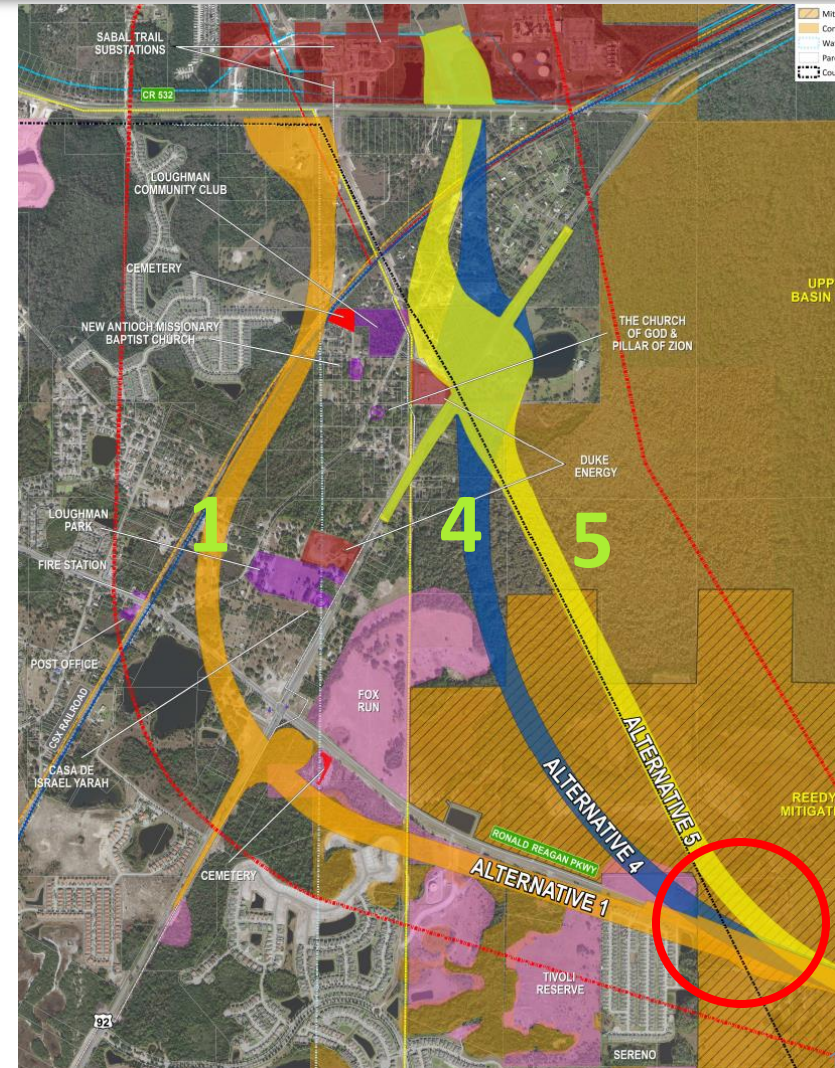
## Eliminate Alignments 2 and 3 from PD&E

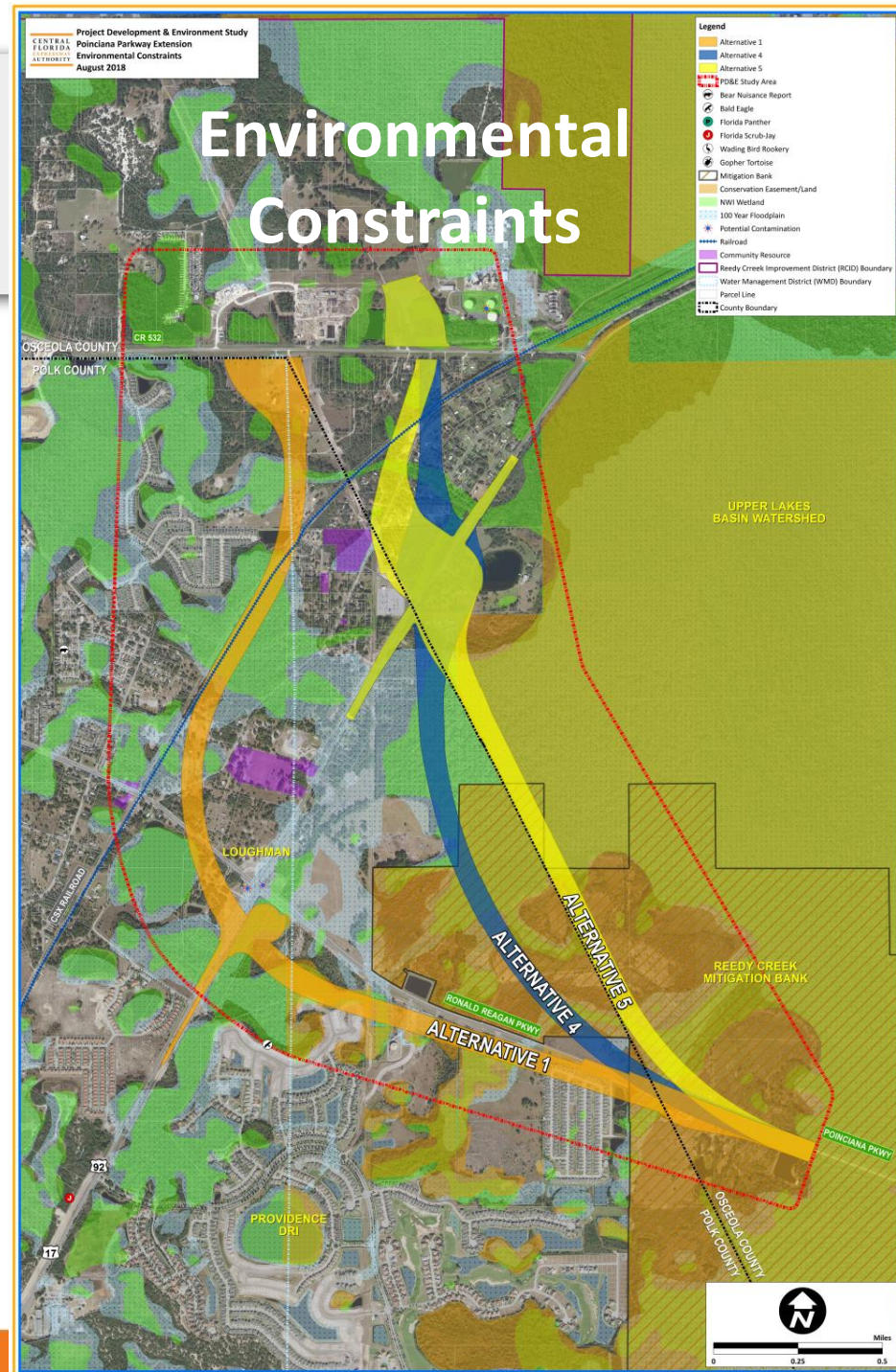
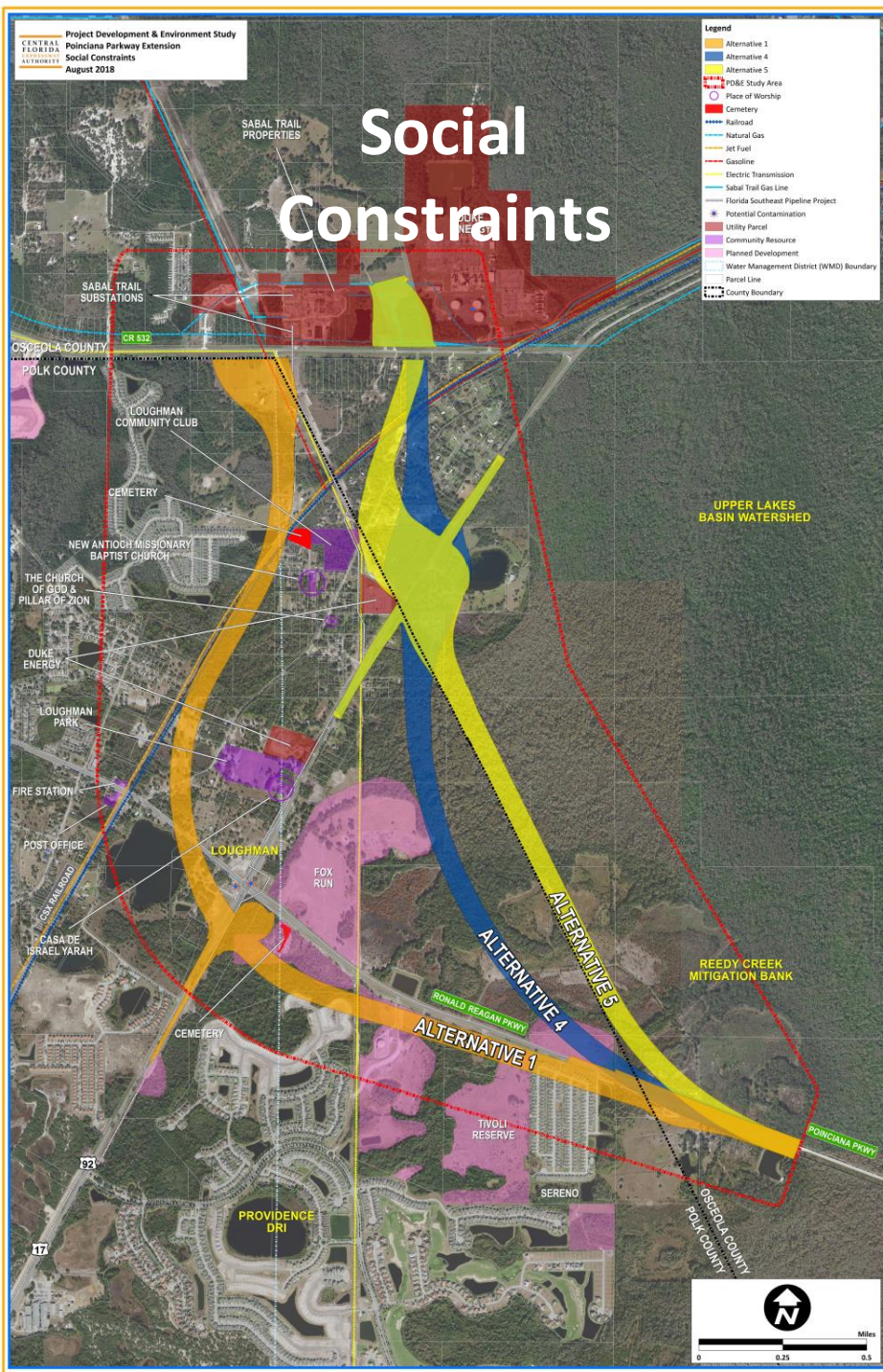
Evaluation Criteria	Alignment 1	<del>Alignment 2</del>	<del>Alignment 3</del>	Alignment 4	Alignment 5
Physical	Medium	<del>Medium</del>	<del>Medium</del>	Medium	Medium
Cultural	Medium	<del>Medium</del>	<del>Medium</del>	Medium	Medium
Natural	Medium	<del>High</del>	<del>High</del>	High	High
Social	High	<del>High</del>	<del>High</del>	Medium	Medium



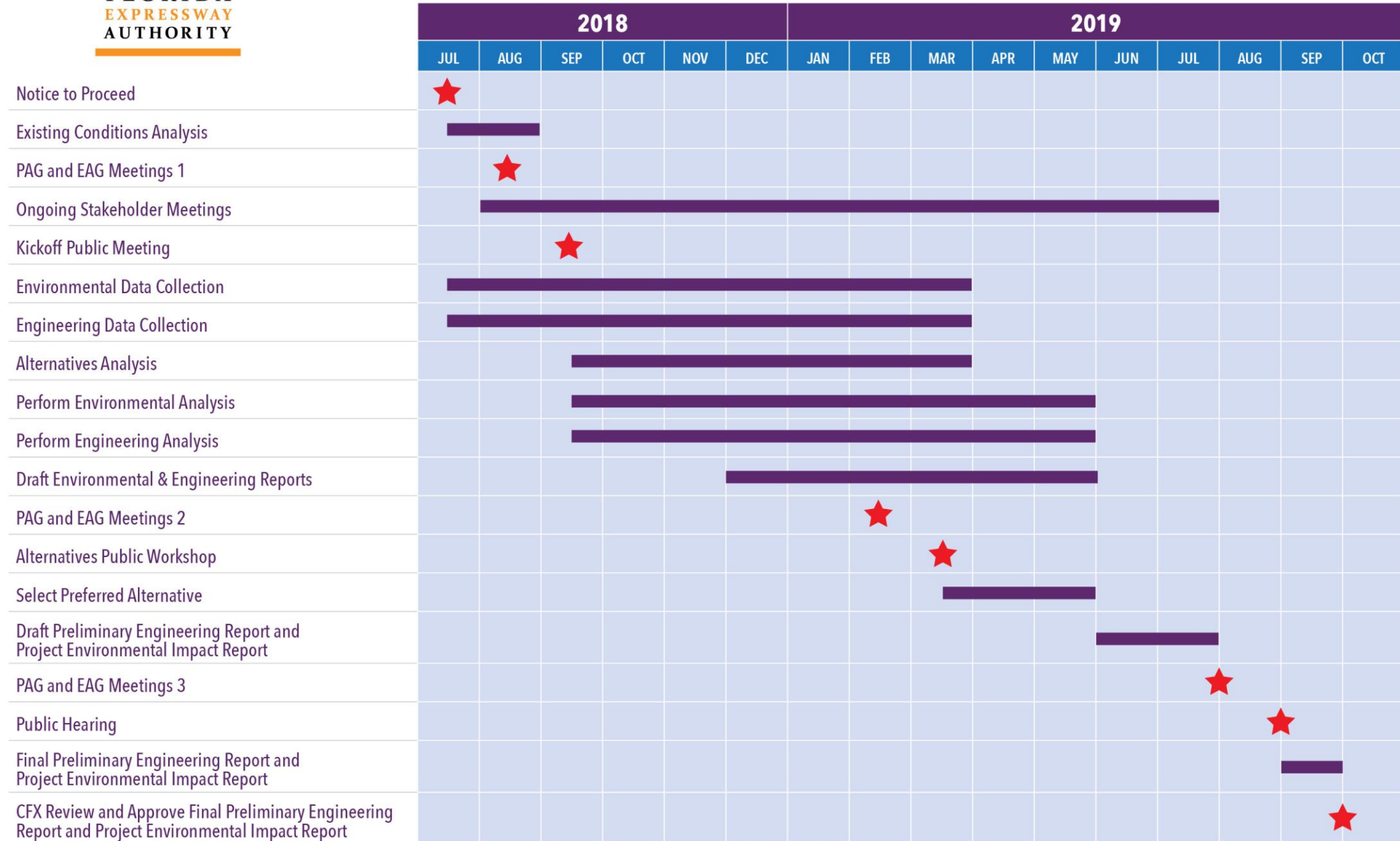
# Poinciana Parkway Extension Polk County, Osceola County & OCX Agreement

- Expansion: Maintain connection to Ronald Reagan Parkway
- Alternative 1: East-west connection to Poinciana Parkway
- Alternatives 4 and 5: Adding east-west connection (evaluation)
- Polk County access to I-4 Connector (US 17/92 interchange)
- CFX: Work with Polk County to evaluate connections



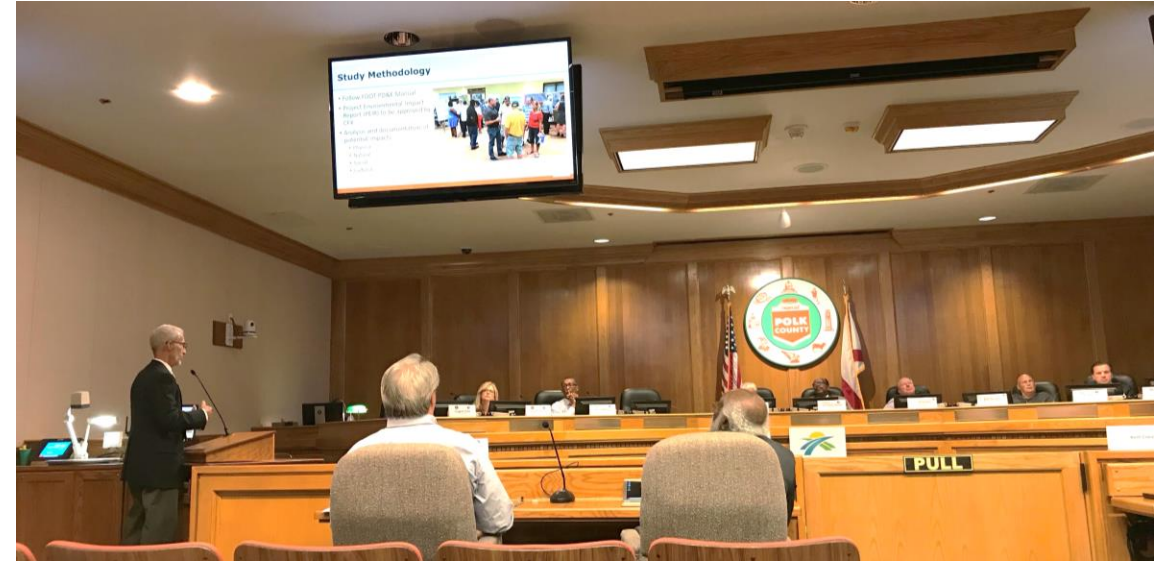


# Poinciana Parkway Extension PD&E Study Schedule



# Public Involvement

- Multiple opportunities for participation
- Environmental & Project Advisory Groups
- Public Meetings
  - Kick-off – September 25, 2018
  - Alternatives Workshop – March 2019
  - Public Hearing – August/September 2019
- Board Presentations – CFX, Osceola and Polk Board of County Commissioners
- Stakeholder Meetings
- CFX Study Webpage & Study Facebook Page



# Poinciana Parkway Extension PD&E Study

## Comments And Questions

For more information contact:  
Mary Brooks  
Public Involvement Coordinator  
407-802-3210  
[Projectstudies@CFXway.com](mailto:Projectstudies@CFXway.com)

