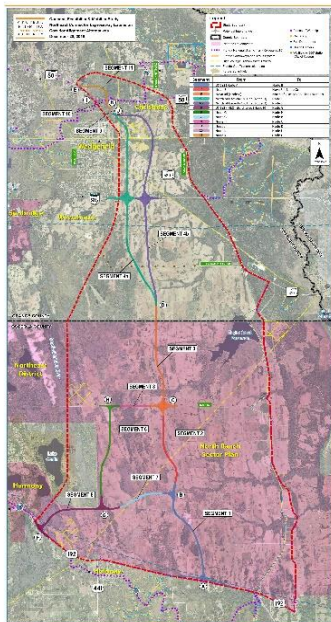


NORTHEAST CONNECTOR EXPRESSWAY EXTENSION (NECEE) ENVIRONMENTAL ADVISORY GROUP (EAG) MEETING #2 SUMMARY

Date/Time: Thursday, December 20, 2018; 9:30 a.m. – 11:30 a.m.

Location: Central Florida Expressway Authority (CFX), 4974 ORL Tower Road, Orlando, FL 32807, Pelican Conference Room

Attendees: Fourteen EAG members and nine staff members attended. See sign-in sheets attached.



I. Notifications

Invitation letters were emailed to 93 members of the EAG on November 27, 2018. The Florida Administrative Register (FAR) ad and CFX public meeting notice were posted on November 27, 2018. A meeting reminder was emailed to EAG members on December 14, 2018.

II. Welcome

Nicole Gough of Dewberry, CFX's General Engineering Consultant (GEC), called the meeting to order at 9:40 a.m. and welcomed everyone. She gave a brief introduction about the meeting and provided safety, housekeeping and Title VI information. She also indicated safety precautions as the area was under a tornado warning. Attendees introduced themselves and the organizations they represented.

III. NECE Extension Presentation

Ralph Bove, Consultant Project Manager with Volkert, presented the following information:

- **Project Overview**

Project limits are roughly from US 192 on the south end to where State Road (SR) 50 meets SR 520 on the north end; the study area is bordered by the Econlockhatchee (Econ) watershed on

the west and the St. Johns River watershed on the east. This corridor was identified as Corridor I in the East Central Florida Corridors Task Force report. A majority of the study area runs through Deseret Ranches' property. There is a relationship between this corridor and the proposed Northeast Connector Expressway (NEC), the Osceola Parkway Extension, the SR 408 Eastern Extension and Colonial Parkway projects.

- **Study Process**

The study is occurring as part of a right-of-way agreement between CFX, Deseret Ranches and Brightline rail. The agreement was to advance this study along Corridor I as identified in the Governor's East Central Florida Corridor Task Force.

- **Purpose & Need**

- Capacity and mobility needs
- Safety
- Systems continuity
- Consistency with adopted plans and programs
- Social demands and economic development



- **Project Goals**

- Improve connections to east-west corridors
- Enhance regional mobility
- Incorporate transit options
- Promote regional north-south connectivity and systems continuity

- **Project Schedule**

The study started in February 2018 and is scheduled to last 15 months. This is the second EAG meeting. Public information workshops are scheduled for January 2019 in Orange and Osceola counties. The final findings will be presented to the CFX Board in spring of 2019.

- **Background & History**

This corridor resulted from work by the East Central Florida Corridor Task Force; How Shall We Grow, a regional growth planning initiative; and the Central Florida Water Initiative. It is integral to the planning of the North Ranch Sector Plan adopted by the Osceola County Board of County Commissioners in September of 2015.

- **Land Use Considerations**

Other development areas outside the study area, such as Harmony and the Northeast District in Osceola County, affect the need for mobility.

- **North Ranch Master Plan**

The study team has taken into consideration the transportation framework that has been done for this master plan and has been coordinating with stakeholders.

- **Corridor Options**

- North Ranch Corridor
- East Central Florida Corridor Task Force – Corridor I
- Northern project limit at SR 50 and SR 520
- Opportunities to connect NEC and NECEE

- **Stakeholder Outreach**

There has been extensive coordination with stakeholders. Representatives from Orange, Osceola and Brevard counties regularly attend study progress meetings.

- **EAG Input to Date**

As the study has progressed, the team has considered comments from the public and EAG members. These included:

- Consider broader context of wildlife corridors and movement.
- Add Caracara to list of species.
- Minimize impacts to/avoid environmental lands in Orange County.
- Consider effects/impacts of east-west connections.
- Identify wildlife overpasses/crossovers upfront.
- Identify agencies involved in controlled-burning and consider smoke corridors.
- Glad to see trails are being considered. Also consider underpasses for trail crossings.

- **Corridor Segments**

Ralph Bove explained that because the study area is so large and has a large regional context, it was broken into segments. The project is oriented north to south, from US 192 up to SR 50 and SR 520. The north/south orientation is consistent with the North Ranch Master Plan recommendations for a new limited access facility, as well as the Governor’s Task Force for Corridor I.

The team has considered potential, alternative termini along US 192 to provide flexibility to tie in to some of the concepts that were developed for the Northeast Connector Expressway.

Evaluating this project in corridor segments allows the team to consider potential connections back to the Osceola Parkway Extension, or back to the Northeast Connector Expressway along Nova Road, which was identified as Corridor F in the Task Force recommendations. That corridor would be a new limited access or multi-modal corridor, running east and west from essentially the Northeast District in Osceola County all the way over into Brevard County.



Ralph said environmental concerns, especially in Orange County, are being considered. The team has met with the Florida's Turnpike Enterprise about potential northern connections and that agency's plan for the Colonial Parkway.

Ralph walked through the 12 corridor segment options for getting from US 192 to SR 50 or SR 520.

- **Corridor Alternatives**

Ralph Bove reported that various aspects of the corridor have been considered, including public lands, managed lands and potential future conservation easements.

- **Concept Development**

Conceptual design

- Mainline: 500-foot wide right of way (R/W)
- Interchanges: R/W consistent with other system interchanges for planning purposes
- Grade separations (bridges)
- Connections to existing and planned facilities

Right-of-way needs for study alternatives

- Foundation for future studies
- Potential right-of-way agreement(s)
- Documentation in long-range plans

Continued coordination

- Adjacent projects
- Agency stakeholders

- **Transit Considerations**

In regard to transit, it is a coordination effort at this point and recognition of future opportunities.

- **Upcoming Public Meetings**

Two public meetings are being held:

- Jan. 22 – Wedgefield K8
3835 Bancroft Blvd.
Orlando, FL 32833
5:30 p.m. – 7:30 p.m.
- Jan. 24 – Harmony High School
3601 Arthur J. Gallagher Blvd.
St. Cloud, FL 34771
5:30 p.m. – 7:30 p.m.

- **Study Report**

A report with conclusions and recommendations will be published. Over time this could be incorporated into, or serve as the foundation, for future plans and studies.

IV. Questions & Discussion

Nicole Gough invited questions and discussion on the presentation. She stated that the difference between the first EAG meeting and now is that the study is now more fleshed out. This is a high-level study being done far ahead of potential project development. In this, CFX is looking for fatal flaws for environmental and social considerations. The first EAG meeting focused on the north-south look of the study area; this second meeting shows some of the east-west considerations to harmonize what's expected in the future.

Hugh Harling, East Central Florida Regional Planning Council (ECFRPC): Your Beachline in the original corridor study extended it to SR 46 going past the Sanford Airport and allowing it to go to Mims near the Union Carbide plant. The ability to come north into that area is important. The ability to go on the Beachline to Merritt Island for access to the port is limited. This would be an alternate to that. This

should be included in the footnote at least. This was part of the discussion of the corridor study.



Ralph Bove, Volkert: Was this the Governor's Task Force or another group?

Hugh Harling, ECFRPC: It was an FDOT corridor study. That footnote was to give access from central Brevard to north Brevard.

Josh Devries, Osceola County: I want to echo what Ralph mentioned in the presentation. Provide grade separations for planned connections between Harmony and future roadway networks, specifically

Node G in Section 5. My second comment is clarification that it will be looked at in future studies that Corridor F also maintains current network connections.

Beth Jackson, Orange County Environmental Protection Division: I want to reiterate the need to provide a buffer to the Cocoa wellfields. Also, avoid impacts to the Econ Mosaic and Orange County conservation areas. I don't think it's close to reservoirs but be sure roadways won't impact water quality for future reservoirs or water sources.

Ralph Bove, Volkert: Pointed out the potential Pennywash/Wolf Creek Reservoir as part of the North Ranch Sector Plan.

Mike Dennis, Breedlove, Dennis and Associates (BDA) - Deseret Ranches representative: We discussed the history of reservoir planning. These are in the Ranches' plan as placeholders. The Ranches' planned transportation network was done with these in mind.

Bob Mindick, Osceola County Environmental Lands Conservation Program: Nice job. You're doing a super job with this. Hats off to Breedlove Dennis, Tavistock and Deseret for keeping their word and

considering conservation areas. On section 3 between the conservation area and Taylor Creek, we should have some sort of east-west connection. In sections 7 and 8, we need bridging on those spots for a north-south connection.

Ralph Bove, Volkert: We've been working with George McLatchey of DRMP to make sure those are there.

Bob Mindick, Osceola County Environmental Lands Conservation Program: I appreciate that you're really looking ahead with the big future growth in this area in mind.

Nicole Gough, Dewberry: Are there any traffic projections?

Ralph Bove, Volkert: We're working with CDM Smith on preliminary demand forecasting to be consistent with other studies. Given that this is looking at 2045, it's so far out, it's difficult. We're starting to get some traffic numbers and should have numbers for the public meetings in late January.

Nicole Gough, Dewberry: Because it's so far out, we can't assume 100% build out and go with those numbers?

Ralph Bove, Volkert: The big difference between this and past concept studies, is that there was a real look at viability for the other studies. We don't have that restriction on this study. This is for beyond 2045.

JD Humphries, Suburban Land Reserve: If there's the Northeast Sector Plan, will you look at some build-out for numbers given existing approvals for the plan?

Ralph Bove, Volkert: We're looking, but being conservative on the low end. The Task Force is looking at 2060; their methodology is more aggressive in looking at potential growth. We'll compare our numbers with what they have. Neither are looking at 100% build-out at this time.

Lori Sellers, Florida Department of Transportation, District 5: We're looking at the TransFuture tool to meet the socioeconomic plan in 2060.

JD Humphries, Suburban Land Reserve: The corridor width is at 500'. Did you say you don't expect transit with that?

Ralph Bove, Volkert: We understand that the North Sector Plan anticipates multimodal opportunities. Within the 500' R/W we allow surface transit and utilities. This would be developed as the Ranch develops. We don't anticipate rail at this time.

Mike Dennis, BDA: A lot of time and effort went into the Ranch Sector Plan and its transportation network. We appreciate that you're looking at that and keeping that in mind.

There being no further discussion, Nicole Gough concluded the meeting at 10:34 a.m. She advised that the two public meetings will be held in late January 2019. It was noted that the EAG presentation and display boards would be emailed to the attendees and also posted on the study webpage.

END OF SUMMARY

This meeting summary was prepared by Kathy Putnam, Public Involvement Coordinator at Quest Corporation of America. It is not verbatim, but is a summary of the meeting activities and overall discussion. If you feel something should be added or revised, please contact Kathy Putnam by email at Kathy.putnam@qcausa.com or by telephone at 407-690-7220 within five days of receipt of this summary.

SIGN IN

CFX Concept, Feasibility & Mobility Study

ENVIRONMENTAL ADVISORY GROUP MEETING - MEETING NO. 2

CFX Project No.: 599-215 / Northeast Connector Expressway Extension

Central Florida Expressway Authority, 4974 ORL Tower Road, Orlando, FL 32807

December 20, 2018

Name	Organization	Address	City/State/Zip	Email Address	Initials
Thomas Hawkins	1000 Friends of Florida	P.O. Box 5948	Tallahassee, FL 32314-5948	friends@1000fof.org	
Charles Lee	Audubon Society – Central Florida	4500 Biscayne Boulevard; Suite 205	Miami, FL 33137	Chlee2@earthlink.net	
Rick Baird	Orange County Audubon Society	1920 North Forest Avenue	Orlando, FL 32803	Rick Baird	
Deborah Green	Orange County Audubon Society	1920 North Forest Avenue	Orlando, FL 32803	sabalpress@mac.com; watermediaservices@icloud.com; watermediaservices@mac.com; watermediaservices@me.com	
Sandy Webb	Audubon Society – Kissimmee Valley	P.O. Box 420115	Kissimmee, FL 34742	slwebbzeit@gmail.com	
Larry Rosen	Audubon Society – Kissimmee Valley			LarryRosen@CFL.RR.com	
Patricia Steed	Central Florida Regional Planning Council	535 E. Church Street	Bartow, FL 33830	psted@cfRPC.org	
Mike Knight	Brevard County Environmentally Endangered Lands Program	91 East Drive	Melbourne, FL 32904	Mike.Knight@breBrevardfl.gov	
Virginia Barker	Brevard County Natural Resources	2725 Judge Fran Jamieson Way	Viera, FL 32940	Virginia.Barker@brevardfl.org	
Mary Ellen Donner	Brevard County Parks and Recreation	2725 Judge Fran Jamieson Way	Viera, FL 32940	MaryEllen.Donner@brevardfl.gov	
Erin Sterk	Brevard County Planning & Zoning			Erin.sterk@brevardfl.gov	
Traci Deen	Conservation Trust for Florida	1731 NW 6 th Street; Suite D	Gainesville, FL 32609	traci@conserveflorida.org	

SIGN IN



CFX Concept, Feasibility & Mobility Study

ENVIRONMENTAL ADVISORY GROUP MEETING - MEETING NO. 2

CFX Project No.: 599-215 / Northeast Connector Expressway Extension

Central Florida Expressway Authority, 4974 ORL Tower Road, Orlando, FL 32807

December 20, 2018

Name	Organization	Address	City/State/Zip	Email Address	Initials
Laurie Ann MacDonald	Defenders of Wildlife - Florida	1 Rankin Avenue; Second Floor	Asheville, NC 28801	Laurie.macdonald@defenders.org	
Don Whyte	Deseret Ranches			dwhyte@deseretranches.com	Phone
Mike Dennis	Deseret Ranches	330 West Canton Ave	Winter Park, FL 32789	mike@bda-inc.com	
Hugh Harling	East Central Florida Regional Planning Council	455 N. Garland Avenue; Fourth Floor	Orlando, FL 32801	hharling@ecfrpc.org	
Fred Milch	East Central Florida Regional Planning Council	455 N. Garland Avenue; Fourth Floor	Orlando, FL 32801	fmilch@ecfrpc.org	
Jennifer Rubiello	Environment Florida	3110 1 st Avenue N.; Suite 2000	St. Petersburg, FL 33713		
Nahir DeTizio	Federal Highway Administration (FHWA)	400 W. Washington Street; Suite 4200	Orlando, FL 32801	Nahir.detizio@dot.gov	
Joseph Sullivan	Federal Highway Administration (FHWA)	400 W. Washington Street; Suite 4200	Orlando, FL 32801	Joseph.sullivan@dot.gov	
Michael Facente	Florida Department of Agriculture – Fresh from Florida			Michael.Facente@FreshFromFlorida.com	
Sean Gallagher	Florida Department of Agriculture – Fresh from Florida	8431 S. Orange Blossom Trail	Orlando, FL 32809	Sean.gallagher@freshfromflorida.com	
Will Kitchings	Florida Department of Agriculture – Fresh from Florida	8431 S. Orange Blossom Trail	Orlando, FL 32809	Will.kitchings@freshfromflorida.com	
Kacee Johnson	Florida Department of Environmental Protection	3900 Commonwealth Blvd.	Tallahassee, FL 32399	Kacee.l.johnson@dep.state.fl.us	
Linda Reeves	Florida Department of Environmental Protection	3900 Commonwealth Blvd.	Tallahassee, FL 32399	Linda.reeves@dep.state.fl.us	

SIGN IN

CFX Concept, Feasibility & Mobility Study

ENVIRONMENTAL ADVISORY GROUP MEETING - MEETING NO. 2

CFX Project No.: 599-215 / Northeast Connector Expressway Extension

Central Florida Expressway Authority, 4974 ORL Tower Road, Orlando, FL 32807

December 20, 2018

Name	Organization	Address	City/State/Zip	Email Address	Initials
Ginny Jones	Florida Department of State – Division of Historical Resources	500 S. Bronough Street	Tallahassee, FL 32399- 0250	Ginny.jones@dos.myflorida.com	
Timothy Parsons	Florida Department of State – Division of Historical Resources	500 S. Bronough Street	Tallahassee, FL 32399- 0250	Timothy.parsons@dos.myflorida.com	
Alex Holtkamp	Florida Department of Transportation – District 5	719 S. Woodland Blvd.	DeLand, FL 32720	Alexandra.holtkamp@dot.state.fl.us	
Mansoor Khuwaja	Florida Department of Transportation – District 5	719 S. Woodland Blvd.	DeLand, FL 32720	Mkhuwaja@hanson-inc.com	
Casey Lyon	Florida Department of Transportation – District 5	719 S. Woodland Blvd.	DeLand, FL 32720	Casey.lyon@dot.state.fl.us	
Lori Sellers	Florida Department of Transportation – District 5	719 S. Woodland Blvd.	DeLand, FL 32720	lori.sellers@dot.state.fl.us	<i>Phone</i>
Brian Stanger	Florida Department of Transportation – District 5	719 S. Woodland Blvd.	DeLand, FL 32720	Brian.stanger@dot.state.fl.us	
Alison Stettner	Florida Department of Transportation – District 5	719 S. Woodland Blvd.	DeLand, FL 32720	Alison.Stettner@dot.state.fl.us	
Bill Walsh	Florida Department of Transportation – District 5	719 S. Woodland Blvd.	DeLand, FL 32720	William.walsh@dot.state.fl.us	
John Zielinski	Florida Department of Transportation – District 5	719 S. Woodland Blvd.	DeLand, FL 32720	<u>John.Zielinski@dot.state.fl.us</u>	
Katasha Cornwell	Florida Department of Transportation – Office of Env. Management	605 Suwannee Street	Tallahassee, FL 32399	katasha.cornwell@dot.state.fl.us	

SIGN IN

CFX Concept, Feasibility & Mobility Study

ENVIRONMENTAL ADVISORY GROUP MEETING - MEETING NO. 2

CFX Project No.: 599-215 / Northeast Connector Expressway Extension

Central Florida Expressway Authority, 4974 ORL Tower Road, Orlando, FL 32807

December 20, 2018

Name	Organization	Address	City/State/Zip	Email Address	Initials
Brian Barnett	Florida Fish and Wildlife Conservation Commission	620 S. Meridian Street	Tallahassee, FL 32399-1600	Brian.barnett@myfwc.com	
Laura DiGruttolo	Florida Fish and Wildlife Conservation Commission	620 S. Meridian Street	Tallahassee, FL 32399-1600	Laura.digruttolo@myfwc.com	
Jason Hight	Florida Fish and Wildlife Conservation Commission	620 S. Meridian Street	Tallahassee, FL 32399-1600	Jason.hight@myfwc.com	
Richard Mospens	Florida Fish and Wildlife Conservation Commission	620 S. Meridian Street	Tallahassee, FL 32399-1600	Richard.mospens@myfwc.com	
Tom Shupe	Florida Fish and Wildlife Conservation Commission	620 S. Meridian Street	Tallahassee, FL 32399-1600	Tom.shupe@myfwc.com	
David Turner	Florida Fish and Wildlife Conservation Commission	620 S. Meridian Street	Tallahassee, FL 32399-1600	David.turner@myfwc.com	
Dale Allen	Florida Greenways & Trails Foundation	P.O. Box 4142	Tallahassee, FL 32315	Wm.dale.allen@gmail.com	
Peter Dunkleberg	Florida Native Plant Society – Tarflower Chapter			petedunkpi@gmail.com	
Jim Erwin	Florida Native Plant Society – Tarflower Chapter			<u>jimerwin9@gmail.com</u>	
Janet Akerson	Florida Trail Association	5415 SW 13 th Street	Gainesville, FL 32609	JanetAkerson@floridatrail.org	

SIGN IN


CFX Concept, Feasibility & Mobility Study

ENVIRONMENTAL ADVISORY GROUP MEETING - MEETING NO. 2

CFX Project No.: 599-215 / Northeast Connector Expressway Extension

Central Florida Expressway Authority, 4974 ORL Tower Road, Orlando, FL 32807

December 20, 2018

Name	Organization	Address	City/State/Zip	Email Address	Initials
Alex Stigliano	Florida Trail Association	5415 SW 13 th Street	Gainesville, FL 32609	Alex@floridatrail.org	
Martin Horwitz	Florida's Turnpike Enterprise	Turkey Lake Service Plaza, Milepost 263	Ocoee, FL 34761	Martin.horowitz@dot.state.fl.us	
Rax Jung	Florida's Turnpike Enterprise	Turkey Lake Service Plaza, Milepost 263	Ocoee, FL 34761	<u>Rax.jung@dot.state.fl.us</u>	
Henry Pinzon	Florida's Turnpike Enterprise	Turkey Lake Service Plaza, Milepost 263	Ocoee, FL 34761	Henry.pinzon@dot.state.fl.us	Phone
Zach Prusak	The Nature Conservancy – Florida Field Office	2500 Maitland Center Parkway; Suite 311	Maitland, FL 32751	Tricia.martin@tnc.org	
Anthony Cotter	Orange County – Planning Division	P.O. Box 1393	Orlando, FL 32802	Anthony.cotter@ocfl.net	
Renzo Nastasi	Orange County – Planning Division	P.O. Box 1393	Orlando, FL 32802	Renzo.nastasi@ocfl.net	
Brian Sanders	Orange County – Planning Division	P.O. Box 1393	Orlando, FL 32802	Brian.sanders@ocfl.net	
Alissa Torres	Orange County – Planning Division	P.O. Box 1393	Orlando, FL 32802	Alissa.@ocfl.net	
Mercedes Fonseca	Orange County BoCC Dist. 4 Aide	201 S. Rosalind Avenue	Orlando, FL 32801	District4@ocfl.net	
Ashton Holland	Orange County BoCC Dist. 5 Aide	201 S. Rosalind Avenue	Orlando, FL 32801	District5@ocfl.net	
Beth Jackson	Orange County – Environmental Protection Division	800 Mercy Drive; Suite 4	Orlando, FL 32808	Beth.jackson@ocfl.net	

SIGN IN



CFX Concept, Feasibility & Mobility Study

ENVIRONMENTAL ADVISORY GROUP MEETING - MEETING NO. 2

CFX Project No.: 599-215 / Northeast Connector Expressway Extension

Central Florida Expressway Authority, 4974 ORL Tower Road, Orlando, FL 32807

December 20, 2018

Name	Organization	Address	City/State/Zip	Email Address	Initials
Elizabeth Johnson	Orange County – Environmental Protection Division	3165 McCrory Place, Suite 200	Orlando, FL 32803	Liz.johnson@ocfl.net	
David Jones	Orange County – Environmental Protection Division	800 Mercy Drive; Suite 4	Orlando, FL 32808	David.jones2@ocfl.net	
Neal Thomas	Orange County – Environmental Protection Division	800 Mercy Drive; Suite 4	Orlando, FL 32808	Neal.thomas@ocfl.net	
Gail Piazza	Orange County – Parks & Recreation Division	800 N. Orange Avenue	Orlando, FL 32801	Gail.piazza@ocfl.net	
Regina Ramos	Orange County – Parks & Recreation Division	800 N. Orange Avenue	Orlando, FL 32801	Regina.ramos@ocfl.net	
Matt Suedmeyer	Orange County – Parks & Recreation Division	800 N. Orange Avenue	Orlando, FL 32801	Matt.suedmeyer@ocfl.net	
Joshua DeVries	Osceola County	1 Courthouse Square	Kissimmee, FL 34741	Joshua.devries@osceola.org	
Justin Eason	Osceola County	1 Courthouse Square	Kissimmee, FL 34741	Justin.eason@osceola.org	
Kerry Godwin	Osceola County	1 Courthouse Square	Kissimmee, FL 34741	kgod@osceola.org	
Caroline Horton	Osceola County	1 Courthouse Square	Kissimmee, FL 34741	Caroline.horton@osceola.org	
Jeff Jones	Osceola County	1 Courthouse Square	Kissimmee, FL 34741	Jeff.jones@osceola.org	
Mary Moskowitz	Osceola County	1 Courthouse Square	Kissimmee, FL 34741	Mary.moskowitz@osceola.org	

SIGN IN

CFX Concept, Feasibility & Mobility Study

ENVIRONMENTAL ADVISORY GROUP MEETING - MEETING NO. 2

CFX Project No.: 599-215 / Northeast Connector Expressway Extension

Central Florida Expressway Authority, 4974 ORL Tower Road, Orlando, FL 32807

December 20, 2018

Name	Organization	Address	City/State/Zip	Email Address	Initials
Bob Mindick	Osceola County Environmental Lands Conservation Program	1 Courthouse Square; Suite 1400	Kissimmee, FL 34741	Robert.mindick@osceola.org	BM
Atlee Mercer	Osceola County	3 Courthouse Square; Second Floor	Kissimmee, FL 34741	Atlee.mercer@osceolaxway.com	
Tawny Olore	Osceola County	3 Courthouse Square; Second Floor	Kissimmee, FL 34741	Tawny.olor@osceola.org	
Marjorie Holt	Sierra Club – Florida Regional Office	1900 Central Avenue	St. Petersburg, FL 33712	marjorieholt@earthlink.net	
John Puhek	Sierra Club – Florida Regional Office	1900 Central Avenue	St. Petersburg, FL 33712	flsquirrel@aol.com	
William Graf	South Florida Water Management District	1707 Orlando Central Parkway; Suite 200	Orlando, FL 32809	wgraf@sfwmd.gov	
Marc Ady	South Florida Water Management District	1707 Orlando Central Parkway; Suite 200	Orlando, FL 32809	mady@sfwmd.gov	
Laura Carter	Space Coast TPO	2725 Judge Fran Jamieson Way	Melbourne, FL 32940	Laura.carter@brevardfl.gov	
Georganna Gillette	Space Coast TPO	2725 Judge Fran Jamieson Way	Melbourne, FL 32940	Georganna.gillette@brevardfl.gov	
Andre Anderson	City of St. Cloud – Planning & Zoning	1300 9 th Street; City Hall First Floor	St. Cloud, FL 34769	Andre.anderson@stcloud.org	
Jacob Cummings	City of St. Cloud – Planning & Zoning	1300 9 th Street; City Hall First Floor	St. Cloud, FL 34769	Jacob.cummings@stcloud.org	
Stephanie Holtkamp	City of St. Cloud – Planning & Zoning	1300 9 th Street; City Hall First Floor	St. Cloud, FL 34769	sholtkamp@stcloud.org	

SIGN IN

CFX Concept, Feasibility & Mobility Study

ENVIRONMENTAL ADVISORY GROUP MEETING - MEETING NO. 2

CFX Project No.: 599-215 / Northeast Connector Expressway Extension

Central Florida Expressway Authority, 4974 ORL Tower Road, Orlando, FL 32807

December 20, 2018

Name	Organization	Address	City/State/Zip	Email Address	Initials
Veronica Miller	City of St. Cloud – Planning & Zoning	1300 9 th Street; City Hall First Floor	St. Cloud, FL 34769	vmiller@stcloud.org	
Christopher Mills	City of St. Cloud – Planning & Zoning	1300 9 th Street; City Hall First Floor	St. Cloud, FL 34769	Christopher.mills@stcloud.org	
Bill Adams	St. Johns River Water Management District	601 S. Lake Destiny Road; Suite 200	Maitland, FL 32751	wadams@sjrwmd.com	
Alyssa Alers	St. Johns River Water Management District	601 S. Lake Destiny Road; Suite 200	Maitland, FL 32751	aalers@sjrwmd.com	
James Hollingshead	St. Johns River Water Management District	601 S. Lake Destiny Road; Suite 200	Maitland, FL 32751	jhollingshead@sjrwmd.com	
Cammie Dewey	St. Johns River Water Management District	601 S. Lake Destiny Road; Suite 200	Maitland, FL 32751	cmccammon@sjrwmd.com	
JD Humphreys	Suburban Land Reserve	420 Carriage Rd	Satellite Beach 32937	jd@slreserve.com	JDH
Clint Beaty	Tavistock	6900 Tavistock Lakes Blvd Ovl	Orlando	cbeaty@tavistock.com	CB
Richard Levey	Tavistock			rlevey@tavistock.com	
Jim Zboril	Tavistock			jzboril@tavistock.com	Phone
George Eversole	Toho Water Authority	951 Martin Luther King Jr. Boulevard	Kissimmee, FL 34741	Geversole@tohowater.com	

SIGN IN

CFX Concept, Feasibility & Mobility Study
 ENVIRONMENTAL ADVISORY GROUP MEETING - MEETING NO. 2
 CFX Project No.: 599-215 / Northeast Connector Expressway Extension
 Central Florida Expressway Authority, 4974 ORL Tower Road, Orlando, FL 32807
 December 20, 2018

Name	Organization	Address	City/State/Zip	Email Address	Initials
Brian Wheeler	Toho Water Authority	951 Martin Luther King Jr. Boulevard	Kissimmee, FL 34741	bwheeler@tohowater.com	
Andrew Phillips	US Army Corps of Engineers – Jacksonville District	P.O. Box 4970	Jacksonville, FL 32232	Andrew.w.phillips@usace.army.mil	
Jeffrey Collins	US Army Corps of Engineers – Jacksonville District	P.O. Box 4970	Jacksonville, FL 32232	Jeffrey.s.collins@usace.army.mil	
Randy Turner	US Army Corps of Engineers – Jacksonville District	P.O. Box 4970	Jacksonville, FL 32232	Randy.l.turner@usace.army.mil	
Denise Tennessee	US EPA – Region 4	Sam Nunn Atlanta Federal Center; 61 Forsyth SW	Atlanta, GA 30303-8960	Tennessee.Denise@Epa.gov	
John Wrublik	US Fish and Wildlife Service (USFWS)	1339 20 th Street	Vero Beach, FL 32960-3559	John.wrublik@fws.gov	
Zakia Williams	US Fish and Wildlife Service (USFWS)	1339 20 th Street	Vero Beach, FL 32960-3559	zakia_williams@fws.gov	
Darren Vierday	US Rep. Darren Soto's Office (FL 9 th Dist.)			Darren.Vierday@mail.house.gov	
<i>Suzanne Arnold</i>	<i>Lake Mary Jane Alliance</i>	<i>13306 Lake Mary Jun Rd</i>	<i>Orlando FL 32832</i>	<i>SuzArnold@mindspring.com</i>	
<i>George M'Lotchy</i>	<i>D.R.M.P</i>	<i>441 Lake B. Dr. W. W.</i>	<i>Orlando 32810</i>	<i>guncatchey@drmp.com</i>	<i>GM</i>

SIGN IN

CFX Concept, Feasibility & Mobility Study

ENVIRONMENTAL ADVISORY GROUP MEETING - MEETING NO. 2

CFX Project No.: 599-215 / Northeast Connector Expressway Extension

Central Florida Expressway Authority, 4974 ORL Tower Road, Orlando, FL 32807

December 20, 2018

Name	Organization	Address	City/State/Zip	Email Address	Initials
Joseph Berenis	Central Florida Expressway Authority	4974 ORL Tower Road	Orlando, FL 32807	Joseph.berenis@cfxway.com	
Glenn Pressimone	Central Florida Expressway Authority	4974 ORL Tower Road	Orlando, FL 32807	Glenn.pressimone@cfxway.com	GP
Brian Hutchings	Central Florida Expressway Authority	4974 ORL Tower Road	Orlando, FL 32807	Brian.hutchings@cfxway.com	BH
Jonathan Williamson	Dewberry	800 N. Magnolia Ave., Ste. 1000	Orlando, FL 32803	Jwilliamson@dewberry.com	JW
Merissa Battle	Dewberry	800 N. Magnolia Ave., Ste. 1000	Orlando, FL 32803	mbattle@dewberry.com	MB
Nicole Gough	Dewberry	800 N. Magnolia Ave., Ste. 1000	Orlando, FL 32803	ngough@dewberry.com	NG
Ralph Bove	Volkert	2300 Maitland Center Parkway, Suite 122	Maitland, FL 32751	Ralph.bove@volkert.com	RB
Kelli Muddle	Volkert	2300 Maitland Center Parkway, Suite 122	Maitland, FL 32751	Kelli.muddle@volkert.com	KM
Mary Brooks	Quest Corporation of America			Mary.brooks@qcausa.com	
Kathy Putnam	Quest Corporation of America			Kathy.putnam@qcausa.com	KP
Shari Croteau	Quest Corporation of America			Shari.croteau@qcausa.com	SC