

## PROJECT DESCRIPTION

The Central Florida Expressway Authority (CFX) is conducting a Project Development and Environment (PD&E) Study for the proposed Poinciana Parkway Extension. The study is looking at extending the Poinciana Parkway to County Road (CR) 532 at the Osceola County/Polk County line.

## UPDATES SINCE MARCH 2019 PUBLIC MEETING

More than 160 people attended an alternatives public workshop on March 14, 2019 at Poinciana High School. Three study alternatives – Alternatives 1A, 4A and 5A – and a comparative evaluation matrix were presented for public review and comments. Following the public meeting, the study team further evaluated these alternatives.

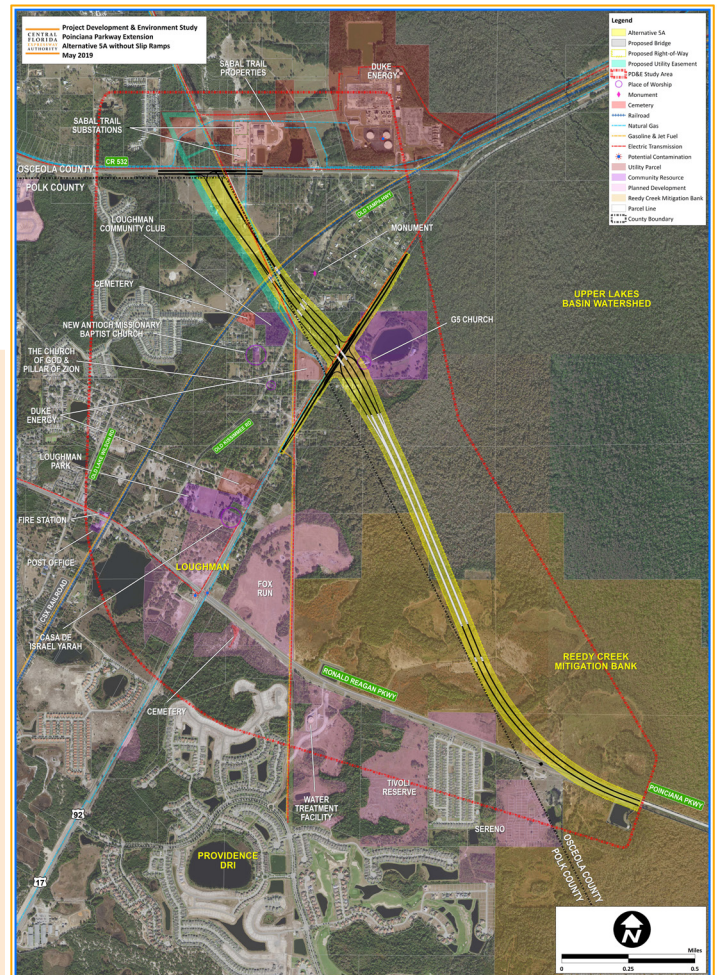
The original Alternative 4 was intended to provide reduced impacts to the Reedy Creek Mitigation Bank compared to Alternative 5. However, due to refinements to the alignments, Alternative 4A resulted in more impacts to the Reedy Creek Mitigation Bank than 5A, and was eliminated from further consideration.

Based on input from the study's Project Advisory Group, slip ramps to and from Ronald Reagan Parkway were added to Alternative 5A. These ramps resulted in more impacts to the Reedy Creek Mitigation Bank, more impacts to residential parcels, higher project costs and lower traffic volumes.



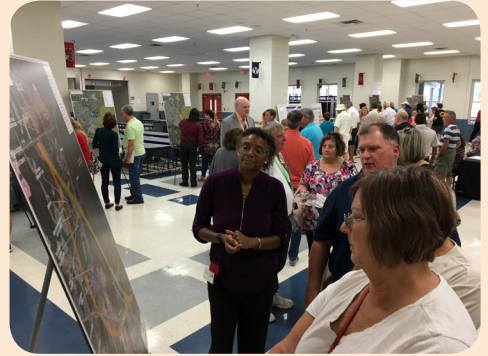
Alternative 1A had more impacts to residential parcels, higher project costs and lower traffic volumes than Alternative 5A.

After evaluating the alternatives, the study team proposes to advance Alternative 5A without slip ramps as the preferred alternative. This alternative has the lowest social impacts, and lower natural impacts than would occur if the slip ramps are added. This alternative also has the lowest total cost and the highest traffic volume. This helps with the financial feasibility of the project since it is a tolled roadway.

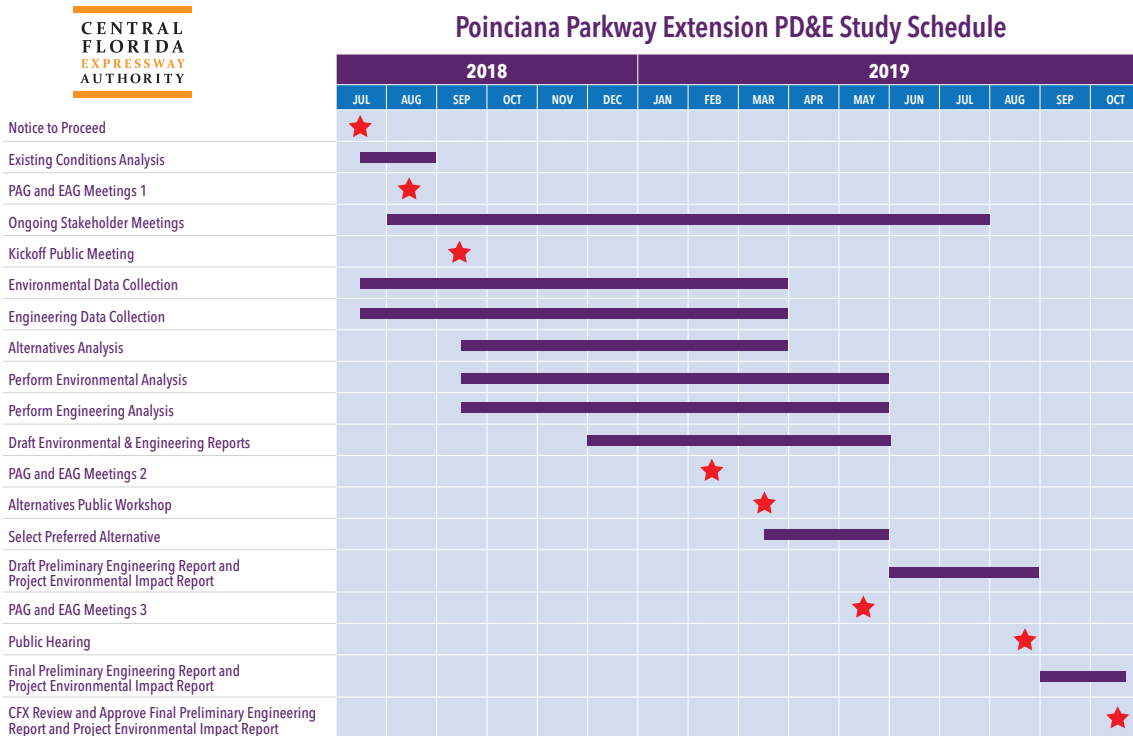


## PUBLIC INVOLVEMENT

Public involvement and community engagement are a crucial component of this study. We value your input. CFX is providing multiple opportunities for participation, including a **public hearing** scheduled on **August 29, 2019** from 5:30 p.m. – 8:00 p.m. at the Poinciana High School, 2300 S. Poinciana Blvd., Kissimmee, FL 34758. Community groups can request a presentation via the CFXWay.com website or by emailing Public Involvement Coordinator Mary Brooks at ProjectStudies@CFXWay.com. You're also welcome to submit your comments via the website or project email address. And follow the study on Facebook for updates.



The PD&E study began in July 2018 and is expected to finish in fall of 2019. A graphic of key study milestones is shown here.



## PROJECT GOALS

The goals of this proposed 3-mile, limited-access facility include improving the roadway connections from CR 532 to the greater Poinciana area, enhancing mobility of the area's growing population and economy, relieving congestion on local roads and promoting regional connectivity.

### TO FIND OUT MORE ABOUT THE STUDY, CONTACT:

**CENTRAL FLORIDA EXPRESSWAY AUTHORITY**

**Mary Brooks**, Public Involvement Coordinator  
 Phone: (407) 802-3210  
 Email: [ProjectStudies@CFXway.com](mailto:ProjectStudies@CFXway.com)

4974 ORL Tower Road  
 Orlando, FL 32807  
 Phone: (407) 690-5000  
 Fax: (407) 690-5011  
 Email: [Info@CFXway.com](mailto:Info@CFXway.com)

You may also visit the study's webpage at:

<https://bit.ly/2KECX9a>

 @PoincianaPkwyExt

Public participation is solicited without regard to race, color, national origin, age, sex, religion, disability or family status. Para más información en español acerca del proyecto, por favor comuníquese con Alicia Arroyo al 407-509-0231 o por correo electrónico [Alicia.Arroyo@QCAusa.com](mailto:Alicia.Arroyo@QCAusa.com).