

## STUDY HISTORY

The Osceola Parkway Extension has been identified as a need in several local, long-range plans and master plans. The former Osceola County Expressway Authority (OCX) completed a Project Development and Environment (PD&E) Study in May 2017 for the Osceola Parkway Extension and presented a recommended alternative. (*Figure 1 on back*)

The Central Florida Expressway Authority's (CFX) enabling legislation (Senate Bill 230, Ch. 2014-171) incorporated the parkway extension and other portions of the OCX 2040 Master Plan into the CFX 2040 Master Plan. In 2018, CFX completed a Concept, Feasibility, and Mobility Study for the Osceola Parkway Extension after evaluating a number of alternatives and concluded the project is viable under CFX criteria.

## STUDY UPDATE

CFX has been re-evaluating the OCX PD&E Study recommended alternative as well as considering other alternatives. The input provided through public outreach, including stakeholder meetings, site tours and advisory committee meetings held during CFX's Concept, Feasibility, and Mobility Study, has been a major component of CFX's PD&E Study Re-evaluation. In addition, the study team has continued to conduct stakeholder meetings to gather further feedback in preparation for a recommended Preferred Alternative.

CFX conducted an extensive analysis of the social, environmental, cultural, and physical impacts of potential alternatives. Of the four evaluated alternatives, two on the west side and two on the east side of the corridor, the recommended preferred alternative (*Figure 2 on back*) results in the least social impacts.



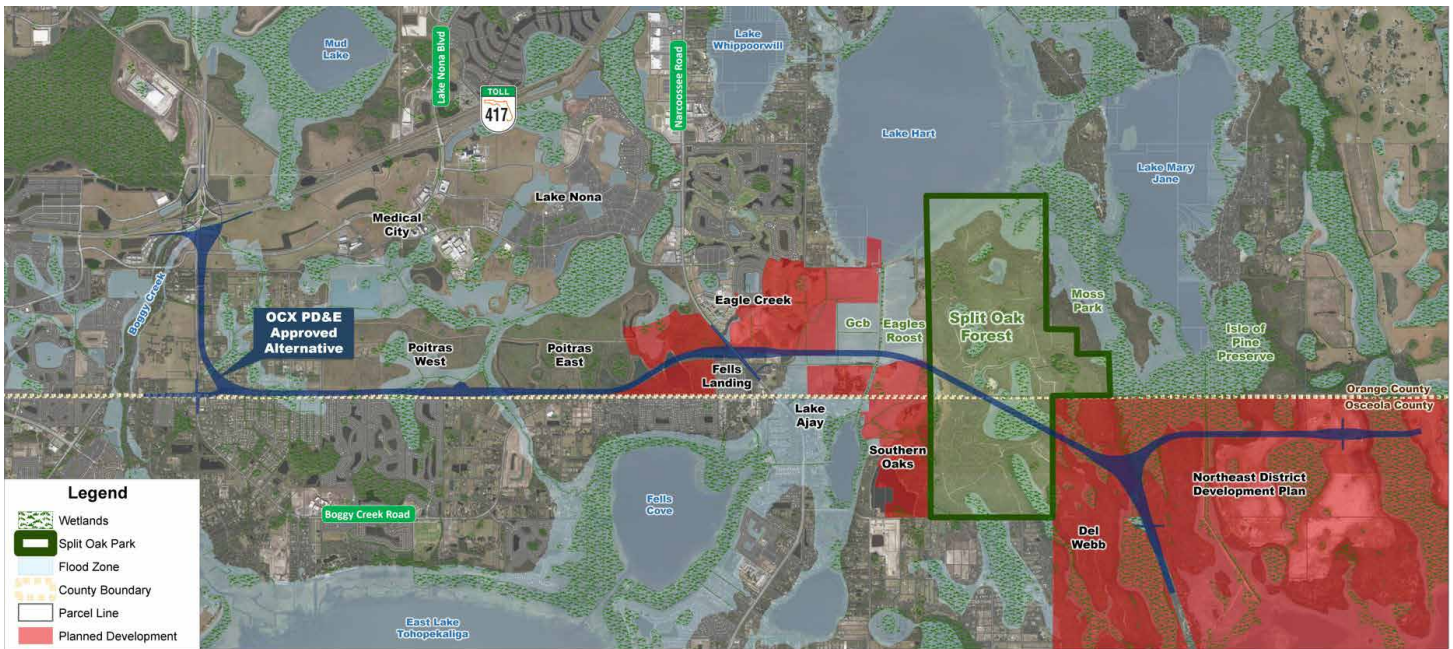
## PROJECT GOALS

The goals of the proposed 9-mile, limited-access facility include:

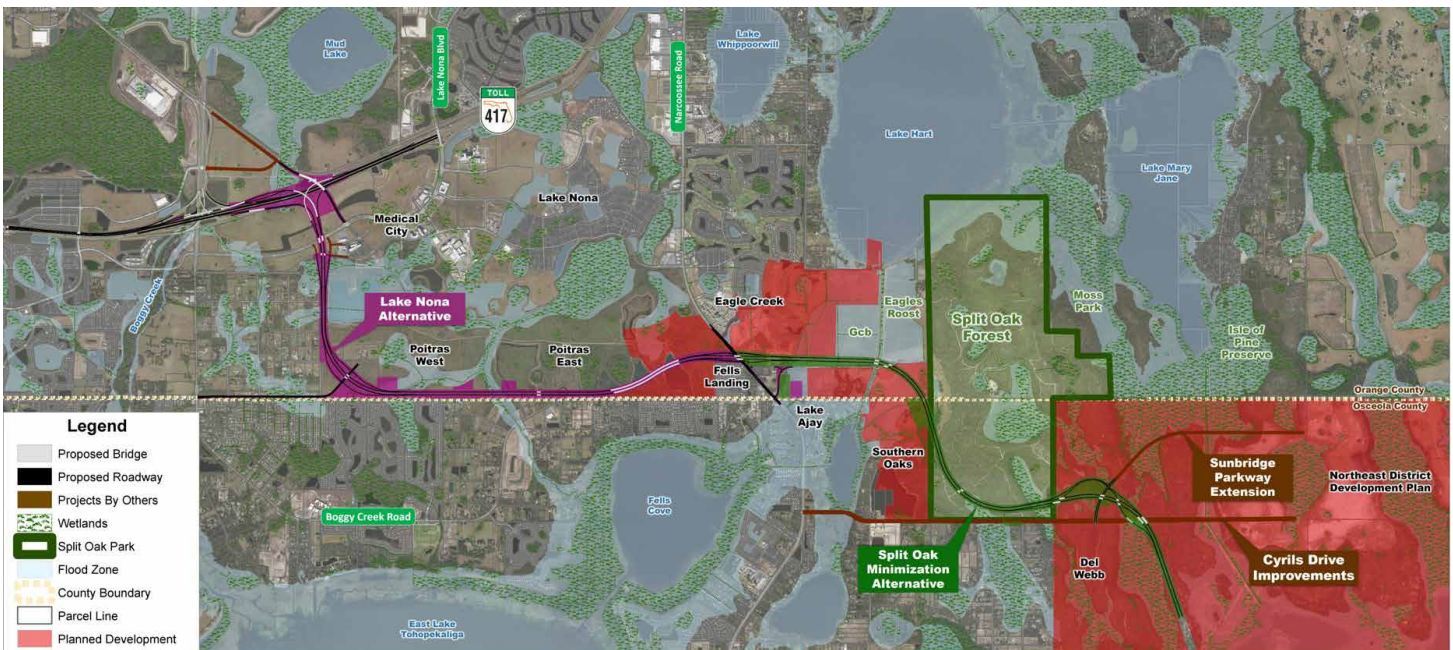
- providing for additional east-west routes within the project area,
- enhancing mobility of the area's growing population and economy,
- relieving congestion on local roads,
- providing for the incorporation of transit options and;
- promoting regional connectivity.



**FIGURE 1: OSCEOLA COUNTY EXPRESSWAY AUTHORITY  
APPROVED ALTERNATIVE — MAY 2017**



**FIGURE 2: PD&E STUDY RE-EVALUATION PREFERRED  
ALTERNATIVE RECOMMENDATION**



**TO FIND OUT MORE ABOUT  
THE STUDY, CONTACT:**

**CENTRAL FLORIDA  
EXPRESSWAY AUTHORITY**

Mary Brooks, Public Involvement Coordinator  
Phone: (407) 802-3210  
Email: [ProjectStudies@CFXway.com](mailto:ProjectStudies@CFXway.com)

4974 ORL Tower Road, Orlando, FL 32807  
Phone: (407) 690-5000  
Fax: (407) 690-5011  
Email: [Info@CFXway.com](mailto:Info@CFXway.com)

You may also visit the study's  
webpage at:  
<http://bit.ly/OscPkwyExtRe>

 @OsceolaPkwyExtPDE