



LAKE/ORANGE EXPRESSWAY

US 27 TO STATE ROAD 429

DESIGN DESCRIPTION

The Central Florida Expressway Authority is designing a new four-lane limited access expressway from US 27 to SR 429 which has been designated as State Road 516. The expressway is divided into three segments for design and construction purposes. The new expressway is expected to improve connectivity between Lake and Orange counties, as well as meet future traffic needs.

WHAT TO EXPECT

During design, surveying along the project corridor is done to assist in roadway design, drainage systems, structures and lighting locations, as well as Intelligent Transportation Systems technology such as overhead dynamic message signs and traffic monitoring stations. Geotechnical investigations will also be performed.

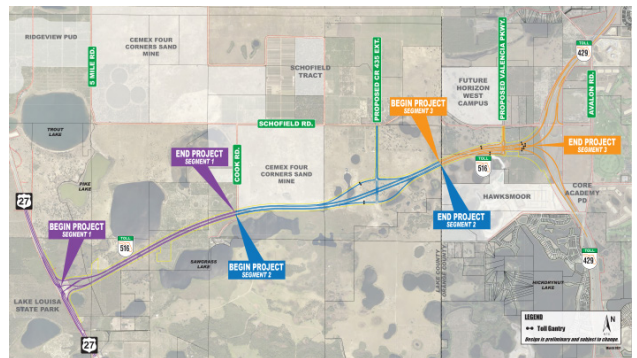
Design Start Dates:

- **Segment 1 – September 2020:**
US 27 to west of Cook Road
- **Segment 2 – January 2021:**
West of Cook Road to Lake/Orange County Line
- **Segment 3 – October 2020:**
Lake/Orange County Line to SR 429

PROJECT GOALS

- Improve connectivity opportunities for Lake and Orange counties.
- Meet anticipated transportation demand for planned growth.
- Support economic viability/job creation for the Wellness Way Area Plan.
- Increase intermodal opportunities with Horizon West Town Center.
- Provide evacuation and emergency services access for emergency events such as hurricanes.

DESIGN MAP (LARGER MAP ON BACK)




QUICK FACTS

Design Timeline:
September 2020 - Early 2023

Estimated Design Cost:
\$20.4 Million

For more information:

 407-383-5817

 Construction@CFXway.com

 www.CFXway.com

 @DriveEPASS

**CENTRAL
FLORIDA
EXPRESSWAY
AUTHORITY**



The regional Central Florida Expressway Authority is responsible for the planning, design, construction, operation and maintenance of a 125-mile limited-access expressway system to serve the five-county region. CFX's system includes SR 408 (Spessard L. Holland East-West Expressway), SR 528 (Martin Andersen Beachline Expressway), SR 417 (Central Florida GreeneWay), SR 429 (Daniel Webster Western Beltway), SR 414 (John Land Apopka Expressway), SR 429 (Wekiva Parkway), SR 538 (Poinciana Parkway), State Road 453 and State Road 451.

Central Florida Expressway Authority: 4974 ORL Tower Road, Orlando, FL 32807
Phone: 407.690.5000 | Fax: 407.690.5011 | Email: construction@cfxway.com



CFX-ASPIRE PILOT PROJECT

Bringing the Charge to the Vehicle

The Central Florida Expressway Authority (CFX) ASPIRE Pilot Project will test a solution that “brings the charge to the vehicle” for both consumer and commercial electric vehicles through the electrification of the roadway to charge vehicles at highway speeds. The pilot project will introduce a wireless charging system installed within one of the travel lanes of the new Lake-Orange Expressway (SR 516), expected to open to traffic in 2025. Electric vehicle drivers can attach a charging device to their vehicle that will charge the battery as they drive over electromagnetic charging plates that will be built into the roadway pavement. These plates are connected to a power source, either a renewable source and/or the electrical grid. The charging plates can detect an electric vehicle is directly above them, making the lane safe for all other drivers to use, as well as the surrounding environment.

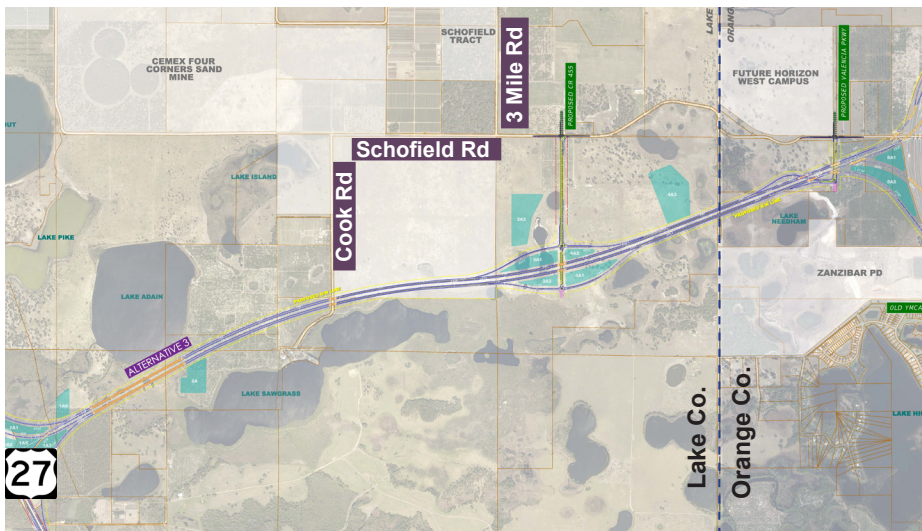
ONE STEP CLOSER TO WIDESPREAD USAGE

ASPIRE built and tested prototypes at University of Utah

► **CFX and ASPIRE test technology in real-world environment & traffic**

Integrate findings and prepare for installation across the country

LAKE-ORANGE EXPRESSWAY (SR 516)



BENEFITS

Consumer

Longer Range EVs
Reduced Cost
Seamless Experience
Equitable

Vehicle

Smaller Battery
Longer Life

Environment

Reduce Emissions
Reduce Battery Impact

Electric Grid

Reduce Peak Demands
Support a Modern Grid

QUICK FACTS

CFX is the **first toll agency in the U.S. Southeast** to partner with ASPIRE

Central Florida’s weather offers a unique real-world testing environment against heat and storms

► **Learn More** Email: info@cfxway.com