

407-885-4743

Construction@CFXway.com

www.CFXway.com

@DriveEPASS

# POINCIANA PARKWAY EXTENSION: SEGMENTS 1 & 2

RONALD REAGAN PARKWAY TO COUNTY ROAD 532

## PROJECT DESCRIPTION

The Central Florida Expressway Authority is designing the extension of State Road 538/Poinciana Parkway. The extension is being designed in two segments. Segment 1, from Ronald Reagan Parkway to south of US 17/92 and Segment 2, from south of US 17/92 to County Road 532 are expected to improve traffic flow and operations in the area.

The 3.1-mile project extends the Poinciana Parkway from Ronald Reagan Parkway to CR 532 and includes nearly a half mile of bridging over wetlands within the Reedy Creek Mitigation Bank. Design also includes an interchange at US 17/92, tolled ramps at CR 532, and bridges over the CSX railroad, Old Tampa Highway, and US 17/92. A noise analysis has been performed as part of this project.

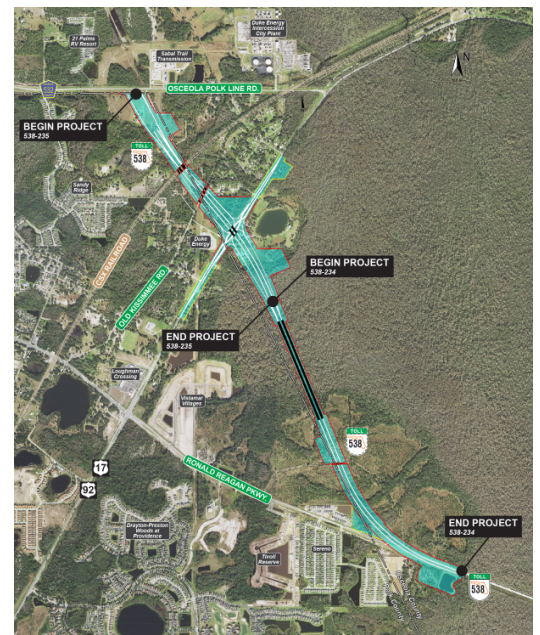
## ABOUT PUBLIC INVOLVEMENT

CFX held a public information meeting on January 17, 2023, and anticipates a pre-construction meeting prior to the start of construction (which is currently scheduled to begin in 2024).

## QUICK FACTS

- **Design Timeline:** July 2020 - Late 2023
- **Estimated Design Cost:** \$11.1 Million

## DESIGN MAP (LARGER MAP ON BACK)





# POINCIANA PARKWAY EXTENSION: SEGMENTS 1 & 2

## RONALD REAGAN PARKWAY TO COUNTY ROAD 532



### ★ DESIGN GOALS

- Improve connectivity opportunities for Osceola and Polk counties.
- Meet anticipated transportation demand for planned growth.
- Provide evacuation and emergency services access for emergency events such as hurricanes.

### 📍 DESIGN MAP

