

POINCIANA PARKWAY EXTENSION: SEGMENTS 1 & 2

RONALD REAGAN PARKWAY TO COUNTY ROAD 532

CENTRAL
FLORIDA
EXPRESSWAY
AUTHORITY



www.CFXway.com 407-885-4743 Construction@CFXway.com @DriveEPASS

SPRING 2024

PROJECT DESCRIPTION

The Central Florida Expressway Authority is designing the extension of State Road 538/ Poinciana Parkway. The extension is being designed in two segments. Segment 1, from Ronald Reagan Parkway to south of US 17/92 and Segment 2, from south of US 17/92 to County Road 532 are expected to improve traffic flow and operations in the area.

The 3.1-mile project extends the Poinciana Parkway from Ronald Reagan Parkway to CR 532 and includes nearly a half mile of bridging over wetlands within the Reedy Creek Mitigation Bank. Design also includes an interchange at US 17/92, tolled ramps at CR 532, and bridges over the CSX railroad, Old Tampa Highway, and US 17/92. A noise analysis has been performed as part of this project.

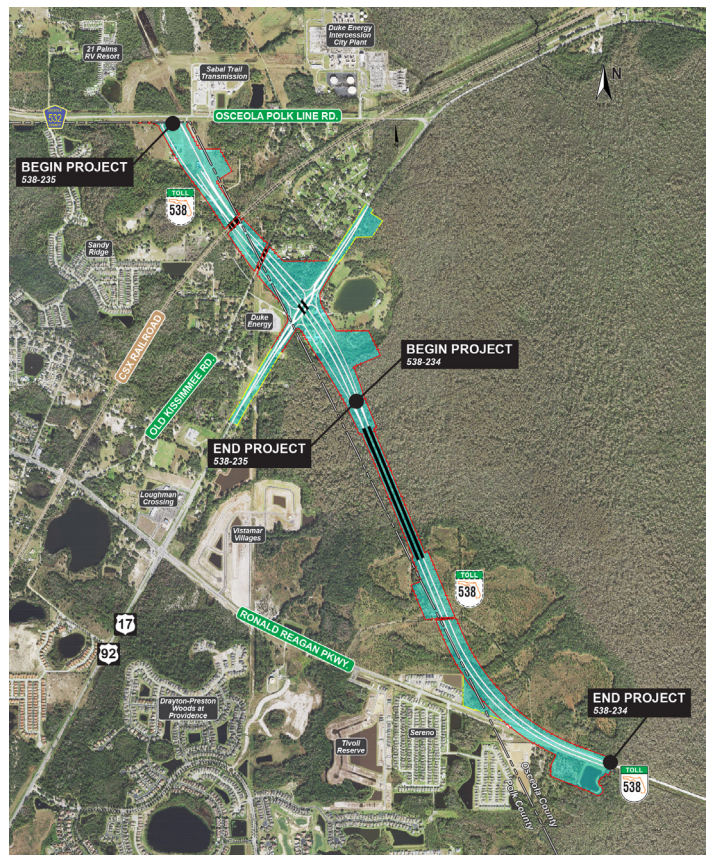
ABOUT PUBLIC INVOLVEMENT

CFX held a public information meeting on January 17, 2023, and anticipates a pre-construction meeting prior to the start of construction (which is currently scheduled to begin in late 2024/early 2025).

QUICK FACTS

- **Design Timeline:** July 2020 - Late 2024
- **Estimated Design Cost:** \$11.1 Million

DESIGN MAP (LARGER MAP ON BACK)



The regional Central Florida Expressway Authority is responsible for the planning, design, construction, operation and maintenance of a 125-mile limited-access expressway system to serve the five-county region. CFX's system includes SR 408 (Spessard L. Holland East-West Expressway), SR 528 (Martin Andersen Beachline Expressway), SR 417 (Central Florida GreeneWay), SR 429 (Daniel Webster Western Beltway), SR 414 (John Land Apopka Expressway), SR 429 (Wekiva Parkway), SR 538 (Poinciana Parkway), State Road 453 and State Road 451.

Central Florida Expressway Authority: 4974 ORL Tower Road, Orlando, FL 32807 | Phone: 407.690.5000 | Fax: 407.690.5011 | Email: construction@cfxway.com

POINCIANA PARKWAY EXTENSION: SEGMENTS 1 & 2

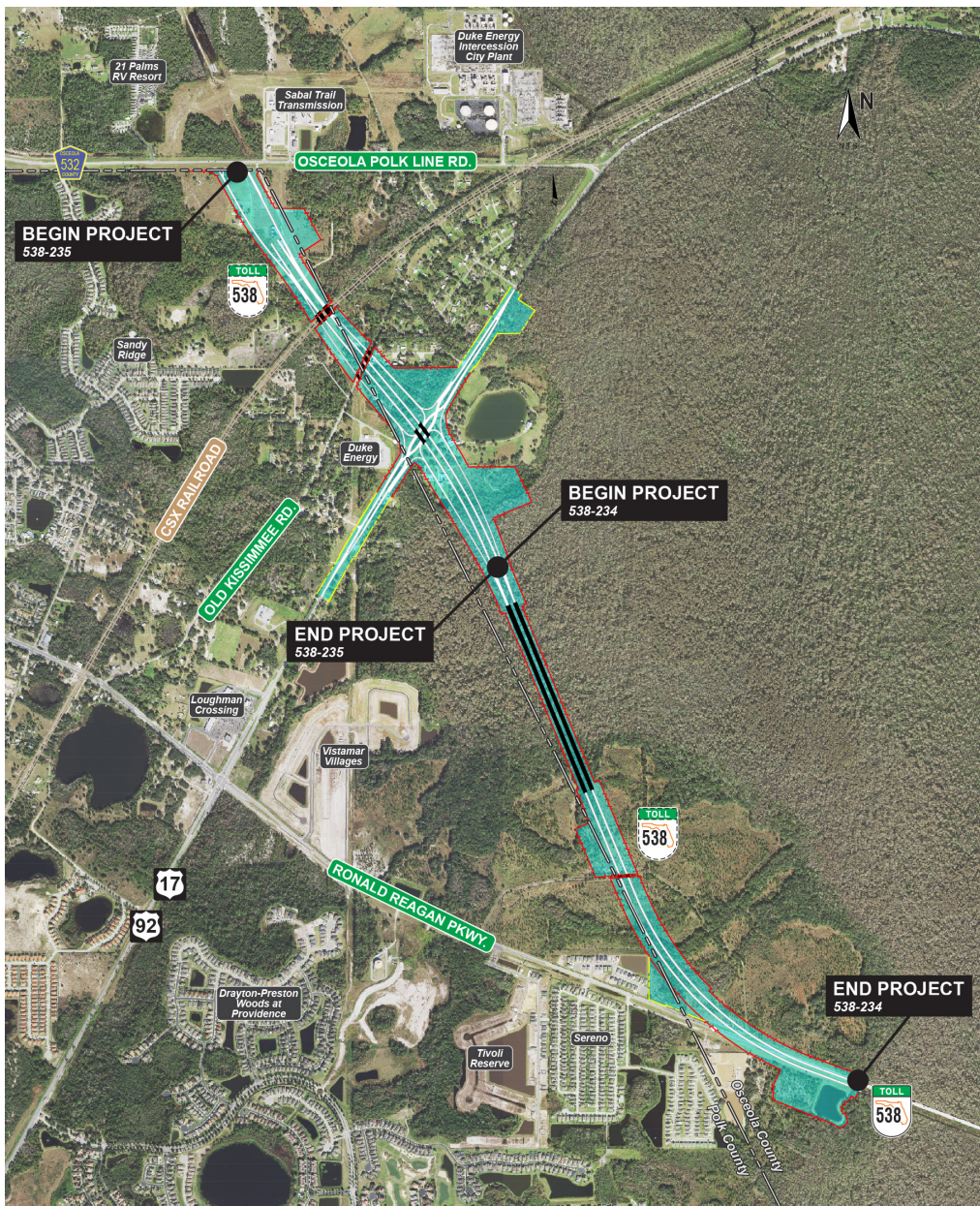
RONALD REAGAN PARKWAY TO COUNTY ROAD 532

CENTRAL
FLORIDA
EXPRESSWAY
AUTHORITY

★ DESIGN GOALS

- Improve connectivity opportunities for Osceola and Polk counties.
- Meet anticipated transportation demand for planned growth.
- Provide evacuation and emergency services access for emergency events such as hurricanes.

📍 DESIGN MAP



Public participation is solicited without regard to race, color, national origin, age, sex, religion, disability or family status. Para más información en español acerca del proyecto, por favor comuníquese con Tiany Sousa al 407-637-0209 o por correo electrónico a Tiany.Sousa@QCAusa.com.