



# LAKE/ORANGE EXPRESSWAY: SEGMENT 2

## WEST OF COOK ROAD TO LAKE/ORANGE COUNTY LINE

### DESIGN DESCRIPTION

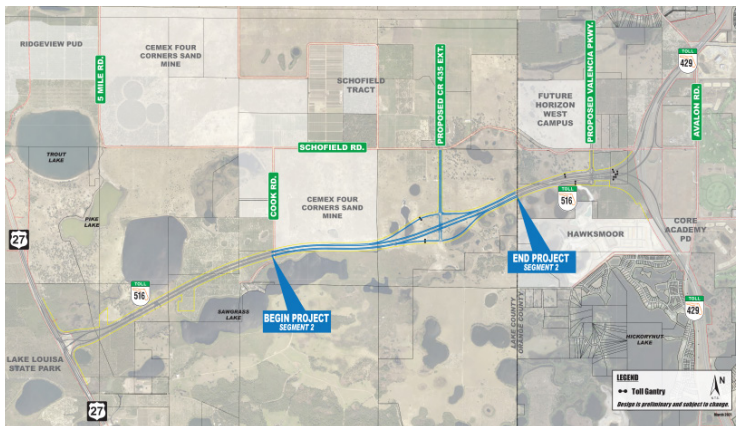
The Central Florida Expressway Authority is designing a new four-lane limited access expressway from US 27 to SR 429 which has been designated as State Road 516. The expressway is divided into three segments for design and construction purposes. The new expressway is expected to improve connectivity between Lake and Orange counties, as well as meet future traffic needs.

Segment 2, a 1.9-mile stretch between west of Cook Road and the Lake/Orange County line, features a new interchange with the proposed extension of County Road 455, including toll gantries and accessibility improvements along CR 455 from SR 516 to Schofield Road.

### WHAT TO EXPECT

During design, surveying along the project corridor is done to assist in roadway design, drainage systems, structures and lighting locations, as well as Intelligent Transportation Systems technology such as overhead dynamic message signs and traffic monitoring stations. Geotechnical investigations will also be performed.

### DESIGN MAP (LARGER MAP ON BACK)



### PROJECT GOALS


- Improve connectivity opportunities for Lake and Orange counties.
- Meet anticipated transportation demand for planned growth.
- Support economic viability/job creation for the Wellness Way Area Plan.
- Increase intermodal opportunities with Horizon West Town Center.
- Provide evacuation and emergency services access for emergency events such as hurricanes.

### QUICK FACTS

**Design Timeline:**  
January 2021 - Early 2023

**Estimated Design Cost:**  
\$5 Million

For more information:

 407-383-5817

 [Construction@CFXway.com](mailto:Construction@CFXway.com)

 [www.CFXway.com](http://www.CFXway.com)

 @DriveEPASS

**CENTRAL  
FLORIDA  
EXPRESSWAY  
AUTHORITY**



The Central Florida Expressway Authority (CFX) is an independent agency of the State of Florida that operates and maintains a regional network of expressways for 3.3 million residents of Brevard, Lake, Orange, Osceola, and Seminole counties and more than 75 million annual visitors to Central Florida. CFX's 125-centerline mile, user-funded system which includes 73 interchanges, 14 mainline toll plazas, 5 mainline gantries, 76 ramp toll plazas and 343 bridges. On average, more than 1.3 million toll transactions are recorded daily, over 95 percent of them electronically. CFX operates E-PASS, the first electronic toll collection system in Florida, with more than one million E-PASS accounts. For more information, visit [CFXway.com](http://CFXway.com).

Central Florida Expressway Authority: 4974 ORL Tower Road, Orlando, FL 32807  
Phone: 407.690.5000 | Fax: 407.690.5011 | Email: [Info@CFXWay.com](mailto:Info@CFXWay.com)



# LAKE/ORANGE EXPRESSWAY: SEGMENT 2

WEST OF COOK ROAD TO LAKE/ORANGE COUNTY LINE

