



- 407-228-3667
- Construction@CFXway.com
- www.CFXway.com
- @CFXway

STATE ROAD 408 IMPROVEMENT PROJECTS

TAMPA AVENUE/SR 408 INTERCHANGE
ORANGE BLOSSOM TRAIL TO THE I-4 INTERCHANGE

SPRING 2026

PROJECT DESCRIPTION

The Central Florida Expressway Authority is continuing to improve regional connectivity and local conditions with two new construction projects on State Road 408 between Tampa Avenue and the I-4 interchange. These projects will add an additional travel lane on eastbound SR 408 between Orange Blossom Trail and I-4, and reconstruct the SR 408/Tampa Avenue interchange. Additionally, the SR 408 ramps at Tampa Avenue, Orange Blossom Trail, Carter Street and Westmoreland Drive will be realigned as part of this work. Once complete, these projects will provide improved and more reliable travel times on SR 408 and help to reduce congestion on the local roads along the project area (especially during events). These projects will also enhance the local community by upgrading sidewalks, improving lighting, and adding new landscaping.

PROJECT BENEFITS



Improve travel times and alleviate congestion



Upgrade sidewalks, lighting and streetscapes

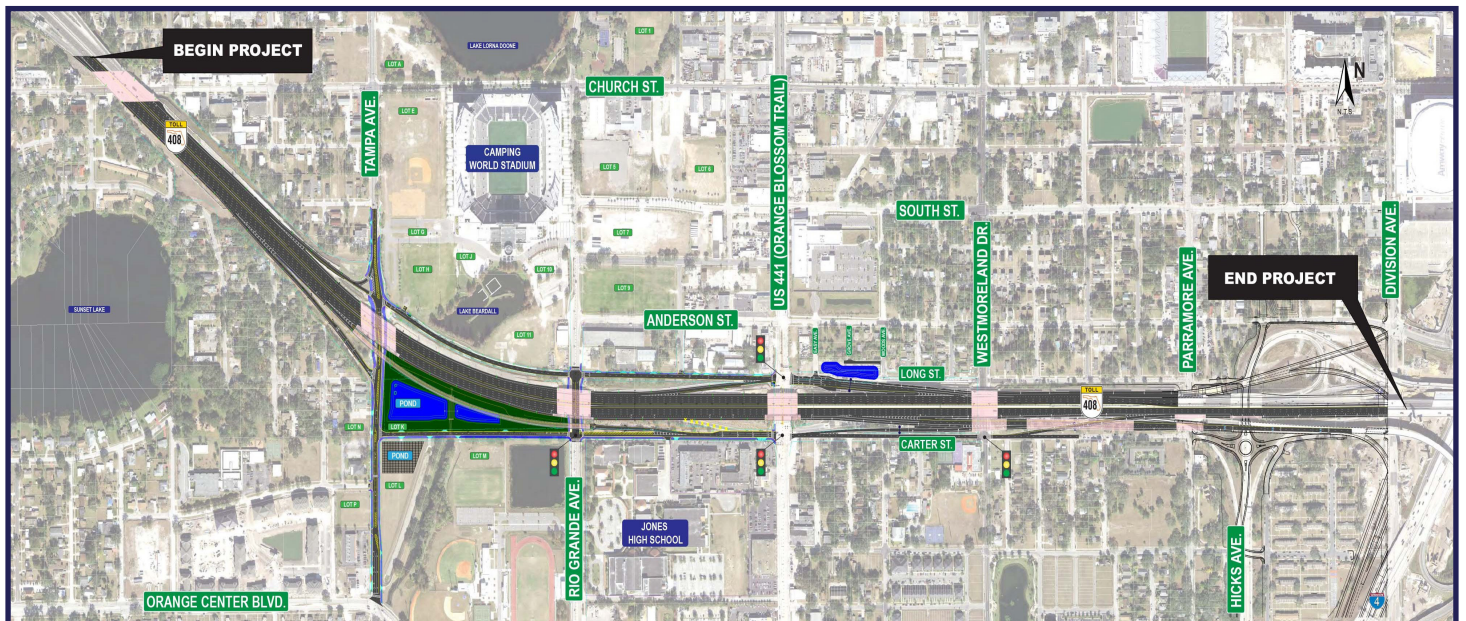


New ramp reconfiguration that will accommodate current and future capacity



Improve overall regional connectivity

PROJECT MAP



The Central Florida Expressway Authority (CFX) is an independent agency of the State of Florida that operates and maintains a regional network of expressways for 3.5 million residents of Brevard, Lake, Orange, Osceola, and Seminole counties and more than 75 million annual visitors to Central Florida. CFX's 125-centerline mile, user-funded system includes 73 interchanges, 14 mainline toll plazas, 5 mainline gantries, 76 ramp toll facilities (includes six ramp gantries) and 365 bridges. On average, more than 1.6 million toll transactions are recorded daily, all of them electronically. CFX operates E-PASS, the first electronic toll collection system in Florida, with more than one million E-PASS accounts. For more information, visit CFXway.com.

Central Florida Expressway Authority: 4974 ORL Tower Road, Orlando, FL 32807 | Phone: 407-228-3667 | Email: Construction@cfxway.com

STATE ROAD 408 IMPROVEMENT PROJECTS

TAMPA AVENUE/SR 408 INTERCHANGE

ORANGE BLOSSOM TRAIL TO THE I-4 INTERCHANGE



Eastbound SR 408 off ramp to US 441 (Orange Blossom Trail).*



New eastbound SR 408 and I-4 on ramps from US 441 (Orange Blossom Trail).*



Improvements at Tampa Avenue and Long Street.*

*Artist Rendering

WORK ZONE SAFETY

For the safety of motorists and work crews, speed limits will be strictly enforced during construction. Speeding fines are doubled in work zones when workers are present. Motorists are reminded to change lanes for safety when they see Road Rangers assisting other motorists or flashing lights — it's Florida law.

WHAT TO EXPECT

During construction, temporary lane and ramp closures will be necessary to accommodate construction activities. To minimize the impact on motorists traveling on SR 408 and local roads, lane and ramp closures will not be permitted during peak travel times. Night and weekend work will also be required for this project.



CONSTRUCTION QUICK FACTS

- **PROJECT TIMELINE:**
Spring 2026 – Early 2029
- **ESTIMATED COST:**
\$218 Million



QUESTIONS? CONTACT US!

For questions or concerns regarding the project, please contact our Public Information Officer at 407-228-3667 or email Construction@CFXWay.com.



VISIT THE PROJECT WEBPAGE

For more project information, please scan the QR code or visit the project webpage at: <https://bit.ly/sr-408>



Public participation is solicited without regard to race, color, national origin, age, sex, religion, disability or family status. Para más información en español acerca del proyecto, por favor comuníquese con Alice Ramos al 407-228-3667 o por correo electrónico a Alice.Ramos@CFXWay.com.