



LAKE/ORANGE EXPRESSWAY

US 27 TO STATE ROAD 429

DESIGN DESCRIPTION

The Central Florida Expressway Authority is designing a new four-lane limited access expressway from US 27 to SR 429 which has been designated as State Road 516. The expressway is divided into three segments for design and construction purposes. The new expressway is expected to improve connectivity between Lake and Orange counties, as well as meet future traffic needs.

WHAT TO EXPECT

During design, surveying along the project corridor is done to assist in roadway design, drainage systems, structures and lighting locations, as well as Intelligent Transportation Systems technology such as overhead dynamic message signs and traffic monitoring stations. Geotechnical investigations will also be performed.

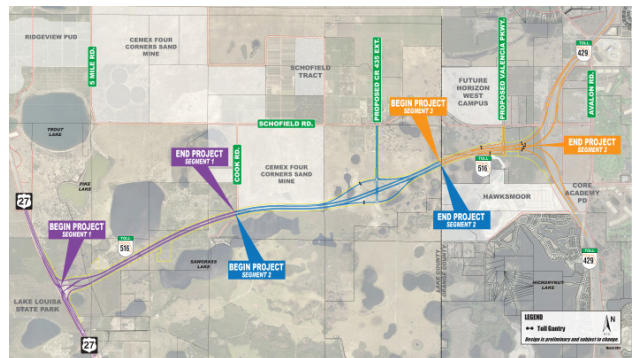
Design Start Dates:

- **Segment 1 – September 2020:**
US 27 to west of Cook Road
- **Segment 2 – January 2021:**
West of Cook Road to Lake/Orange County Line
- **Segment 3 – October 2020:**
Lake/Orange County Line to SR 429

PROJECT GOALS

- Improve connectivity opportunities for Lake and Orange counties.
- Meet anticipated transportation demand for planned growth.
- Support economic viability/job creation for the Wellness Way Area Plan.
- Increase intermodal opportunities with Horizon West Town Center.
- Provide evacuation and emergency services access for emergency events such as hurricanes.

DESIGN MAP (LARGER MAP ON BACK)



For more information:

407-383-5817

Construction@CFXway.com

www.CFXway.com

@DriveEPASS

QUICK FACTS

Design Timeline:
September 2020 - Early 2023

Estimated Design Cost:
\$20.4 Million

CENTRAL FLORIDA EXPRESSWAY AUTHORITY



The regional Central Florida Expressway Authority is responsible for the planning, design, construction, operation and maintenance of a 125-mile limited-access expressway system to serve the five-county region. CFX's system includes SR 408 (Spessard L. Holland East-West Expressway), SR 528 (Martin Andersen Beachline Expressway), SR 417 (Central Florida GreeneWay), SR 429 (Daniel Webster Western Beltway), SR 414 (John Land Apopka Expressway), SR 429 (Wekiva Parkway), SR 538 (Poinciana Parkway), State Road 453 and State Road 451.

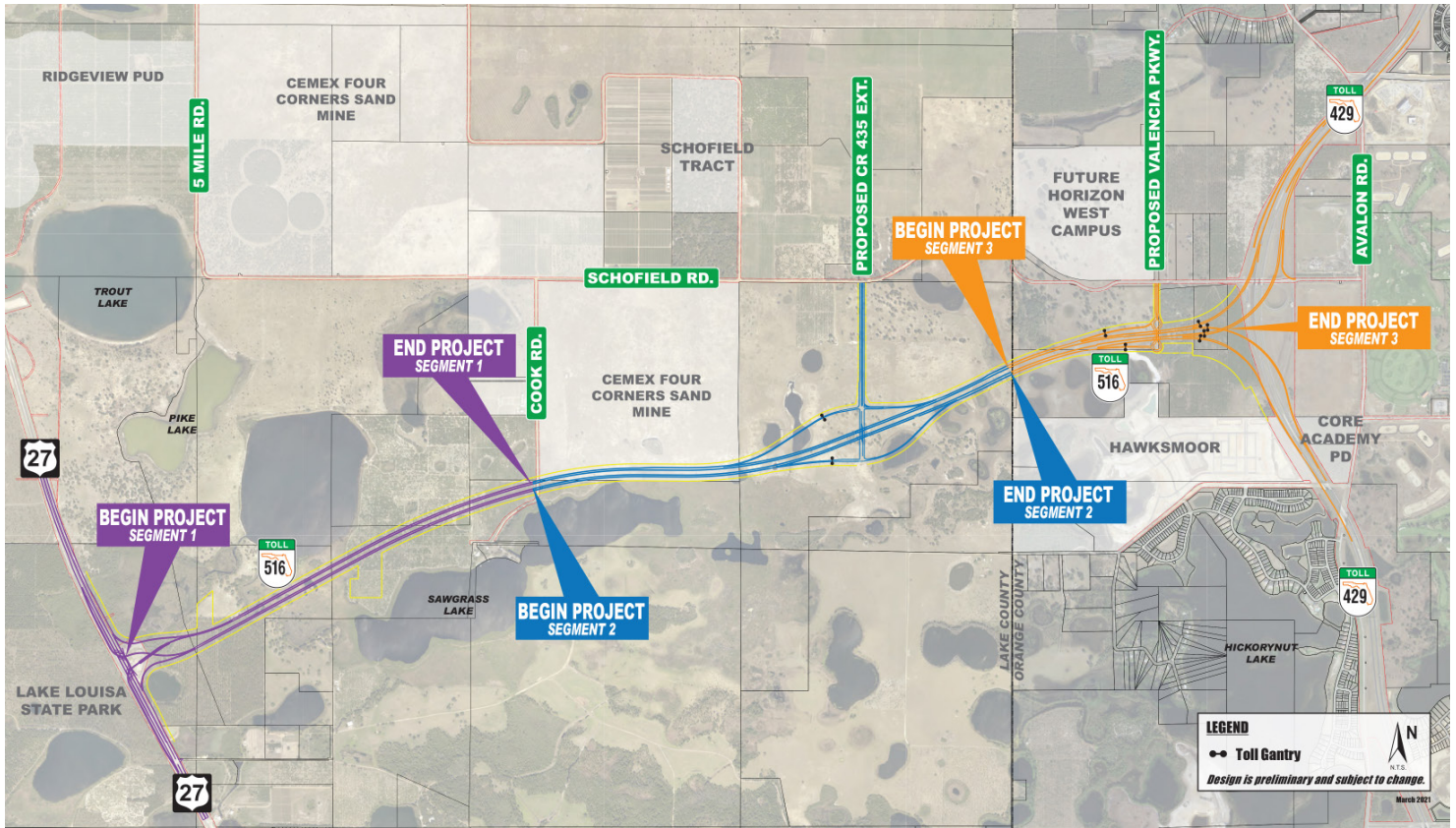
Central Florida Expressway Authority: 4974 ORL Tower Road, Orlando, FL 32807
Phone: 407.690.5000 | Fax: 407.690.5011 | Email: construction@cfxway.com



LAKE/ORANGE EXPRESSWAY

US 27 TO STATE ROAD 429

DESIGN MAP



CENTRAL
FLORIDA
EXPRESSWAY
AUTHORITY



Public participation is solicited without regard to race, color, national origin, age, sex, religion, disability or family status. Para más información en español acerca del proyecto, por favor comuníquese con Kevin Camara al 786-859-1826 o por correo electrónico a Kevin.Camara@QCAusa.com. Para más información en español acerca del proyecto, por favor comuníquese con Kevin Camara al 786-859-1826 o por correo electrónico a Kevin.Camara@QCAusa.com.