



SR 538/POINCIANA PARKWAY EXTENSION: SEGMENT 2

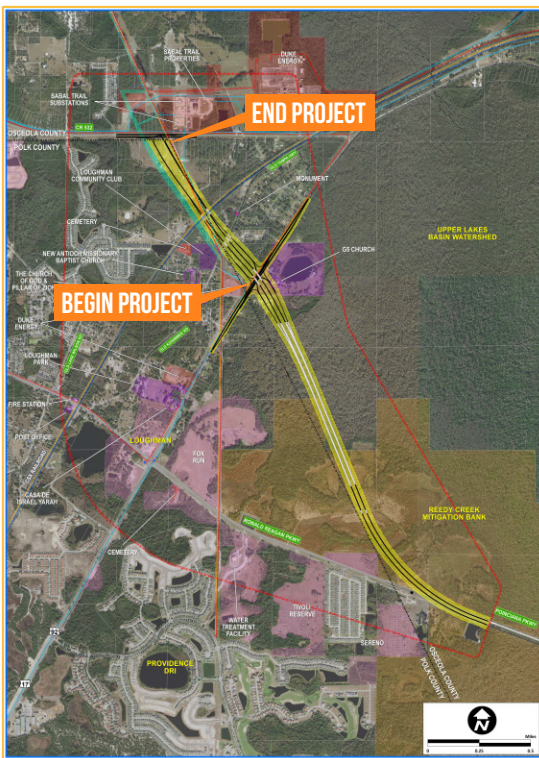
SOUTH OF US 17/92 TO COUNTY ROAD 532

DESIGN DESCRIPTION

The Central Florida Expressway Authority is designing the extension of State Road 538/Poinciana Parkway to the County Road 532/Osceola Polk Line Road. The extension is being designed in two segments. Segment 2, from south of US 17/92 to CR 532, is expected to improve traffic flow and operations in the area.

This 1.2-mile project segment extends the Poinciana Parkway from US 17/92 to CR 532. Design also includes an interchange at US 17/92, tolled ramps at CR 532, and bridges over the CSX railroad, Old Tampa Highway, and US 17/92.

DESIGN MAP (LARGER MAP ON BACK)



WHAT TO EXPECT

During design, surveying along the project corridor is done to assist in roadway design, drainage systems, structures and lighting locations, as well as ITS technology. Geotechnical investigations are also performed.

PROJECT GOALS

- Improve connectivity opportunities for Osceola and Polk counties.
- Meet anticipated transportation demand for planned growth.
- Provide evacuation and emergency services access for emergency events such as hurricanes.

QUICK FACTS

Design Timeline:
July 2020 - Late 2021

Estimated Design Cost:
\$5.8 Million

For more information:

407-383-5817

Construction@CFXway.com

www.CFXway.com

@DriveEPASS

CENTRAL
FLORIDA
EXPRESSWAY
AUTHORITY



The regional Central Florida Expressway Authority is responsible for the planning, design, construction, operation and maintenance of a 125-mile limited-access expressway system to serve the five-county region. CFX's system includes SR 408 (Spessard L. Holland East-West Expressway), SR 528 (Martin Andersen Beachline Expressway), SR 417 (Central Florida GreeneWay), SR 429 (Daniel Webster Western Beltway), SR 414 (John Land Apopka Expressway), SR 429 (Wekiva Parkway), SR 538 (Poinciana Parkway), State Road 453 and State Road 451.

Central Florida Expressway Authority: 4974 ORL Tower Road, Orlando, FL 32807
Phone: 407.690.5000 | Fax: 407.690.5011 | Email: construction@cfxway.com



SR 538/POINCIANA PARKWAY EXTENSION: SEGMENT 2

SOUTH OF US 17/92 TO COUNTY ROAD 532

