

brightline[®]

Michael Cegelis
EVP, Rail Infrastructure

CFX Board Meeting
November 12, 2020

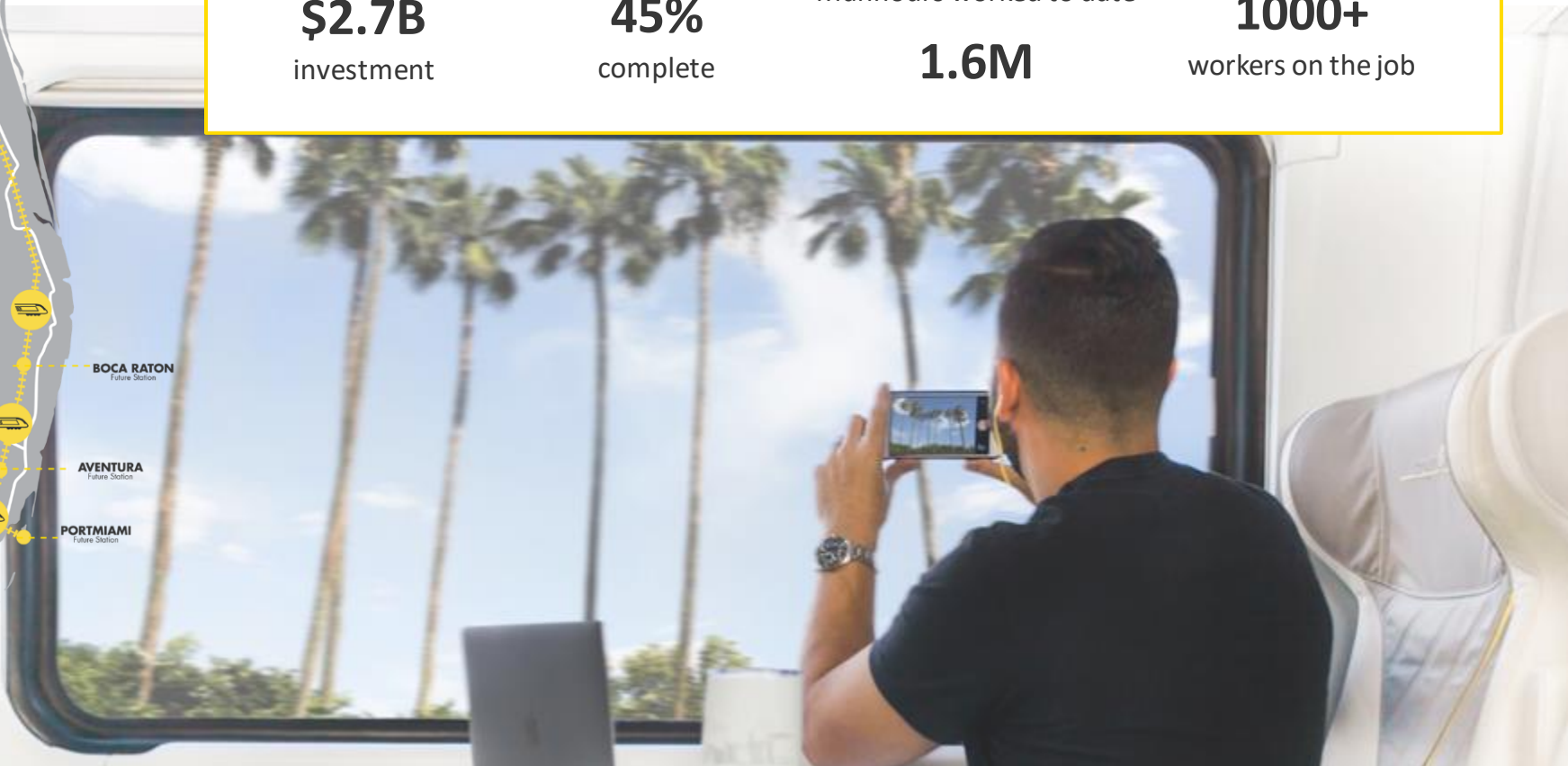


CONNECTING TWO OF THE LARGEST AND MOST CONGESTED MARKETS IN THE NATION

- Three completed & operational stations: **Miami Central, Fort Lauderdale and West Palm Beach**
- Three additional In-Line stations underway: **Aventura (2022), Boca Raton (2022) and PortMiami (2022+)**
- Orlando station under construction: **Orlando International Airport**
- Planned extension to **Tampa** (2029)



\$2.7B investment	45% complete	Manhours worked to date 1.6M	1000+ workers on the job
-----------------------------	------------------------	--	------------------------------------



INVESTMENT GENERATES **PROFOUND POSITIVE IMPACT** ACROSS THE STATE



Direct impact to Florida's economy over 8-year construction & implementation



Added to Florida's GDP through 2021



In labor income through 2021



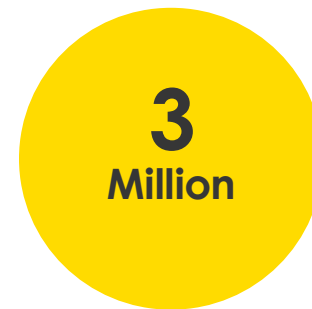
In federal, state, and local government tax revenue through 2021



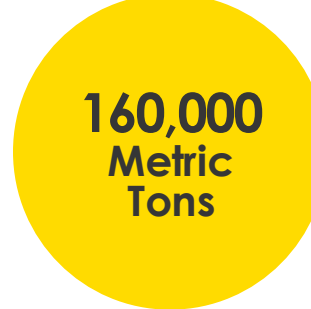
Jobs created per year through rail-line construction



Jobs created post rail-line construction



Cars removed from roadways annually



Of CO2 removed annually

SOURCE: The Washington Economics Group was retained to provide a comprehensive, economic impact analysis study, utilizing widely accepted methodologies and specific and accurate input of data, which encompasses the construction of the rail infrastructure and Transit-Oriented Development.

ZONE 1 VEHICLE MAINTENANCE FACILITY



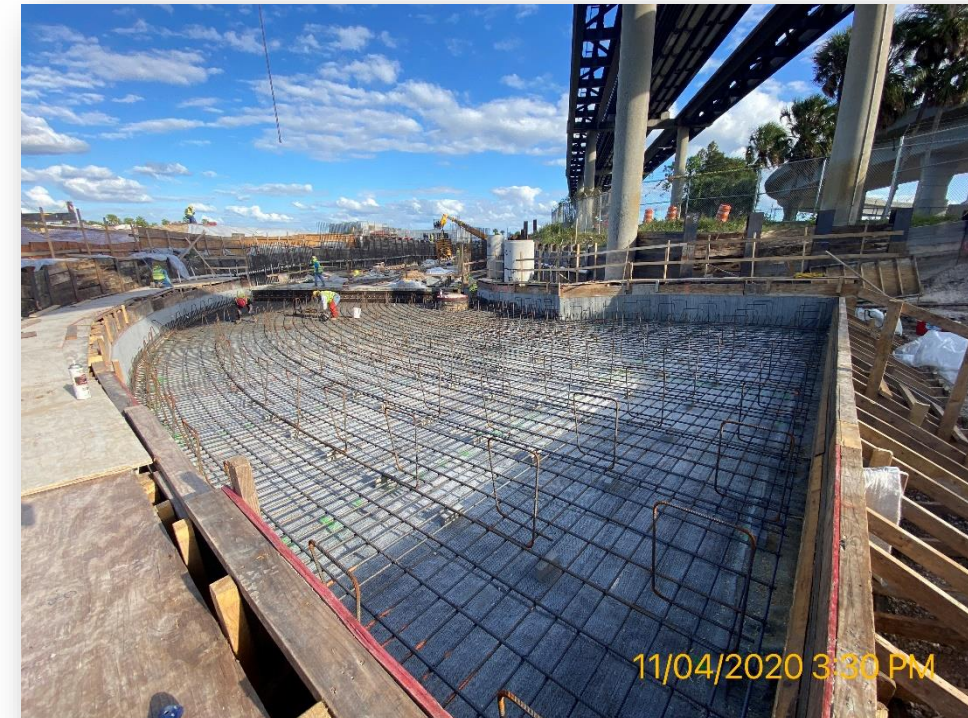
- Sitework of 62 acres completed – Spring 2020
- Building construction began – June 2020



ZONE 2 ORLANDO INTERNATIONAL AIRPORT CORRIDOR



- Clearing complete
- Embankment 80% complete
- EB Cargo Road underpass and soil retention nearly complete
- DF Trackwork complete, ballasted TW to continue in early 2021
- Trenches at Mid Crossfield, TR 4, and TR 2 over 50% complete
- Cargo Rd interchange reconstruction begins in early 2021



ZONE 3 ORLANDO INTERNATIONAL AIRPORT TO COCOA



- 99% of corridor alignment cleared/grubbed
- 58% of rail embankment complete
- 20 of the 21 bridges are underway
- 3.5M CY of rail earthwork excavated
- SR 528 shoofly first traffic shift - June 2020
- Goldenrod Rd. box jack completed – September 2020
- SR 528 / US-1 box jack prep underway – February 2021



Created with free
version of GPS
Camera 5

BOX-JACK PROJECT UNDER GOLDENROD RD.

- 3rd project in US using Petrucco box-jacking technology
- Install rail underpass in 10 days instead of a year – using hydraulic jacks
- September 8 – September 17
- Two pre-cast concrete boxes
 - Box 1: 3,730 US tons (42'x29'x146')
 - Box 2: 3,144 US tons (42'x29'x126')
- One of two on the project
 - SR 528/US 1 (Spring 2021)



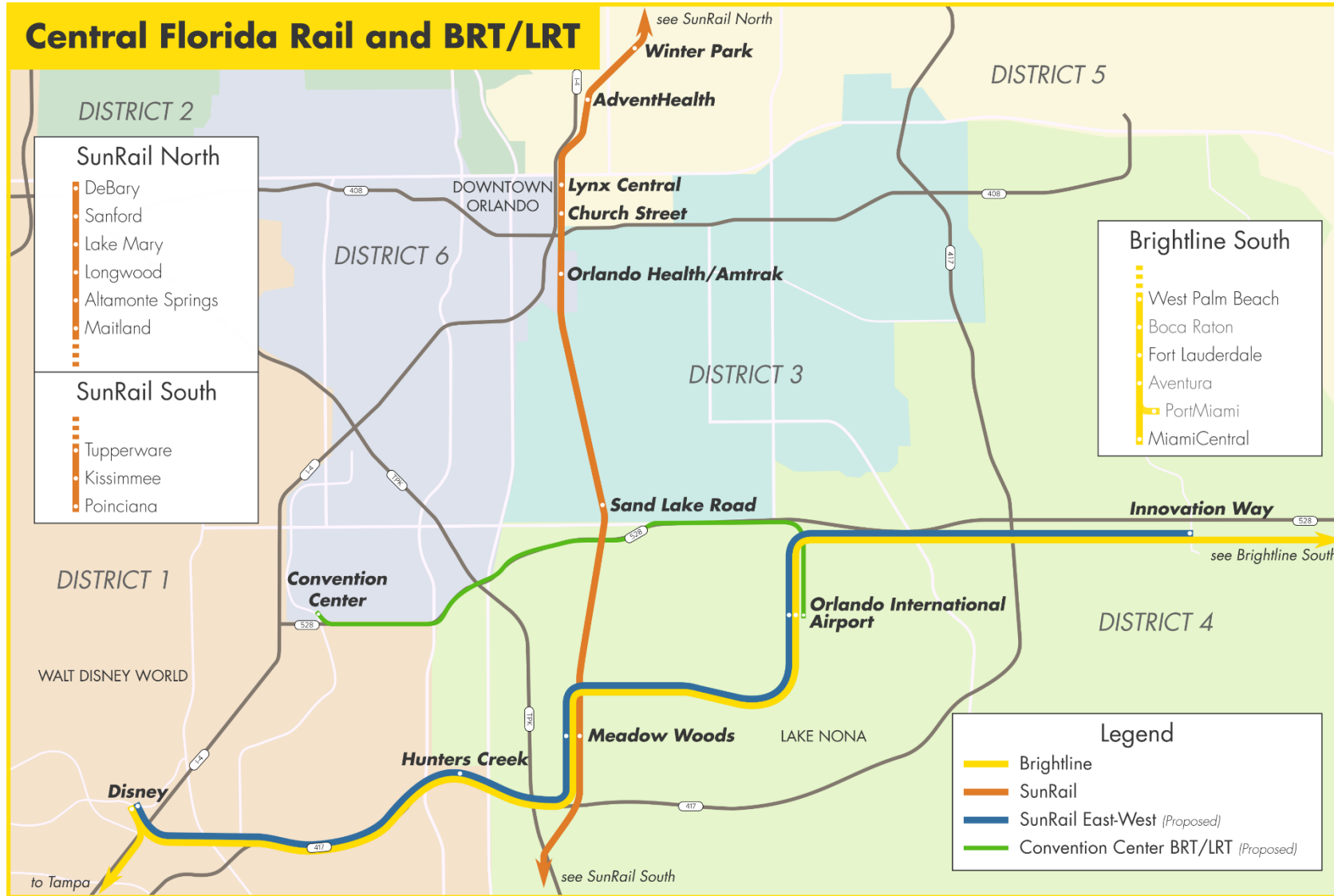
ZONE 4 COCOA TO WEST PALM BEACH



- Clearing & grubbing underway over 129 miles
- 3 of 6 fiber relocation cutovers complete
- Direct purchase rail materials delivered
- Bridges underway in multiple locations
- Rail grading, track installation and ballasting underway
- Grade crossing mast & warning gantry relocations



BRINGING SUNRAIL TO OIA



- Stations
- Interoperability with Brightline tracks
- Service and frequency
- Mobility options for Central Floridians, visitors

Orlando to Tampa Expansion



WHAT DO CENTRAL FLORIDIANS THINK?

- **87%** support the expansion of SunRail to OIA
- **87%** believe we need a way to easily and reliably connect Central Florida for business and tourism
- **86%** believe that train connections between Miami, OIA, Disney and Tampa will make travel easier
- **88%** support a high-speed train route from South Florida through Orlando and over to Tampa
- **92%** agree that as our population grows, we need more ways for workers to commute without increasing traffic
- **72%** support a penny sales-tax for transportation
- **85%** believe in the need to support tourism and transportation infrastructure so Florida is ready when it fully recovers from the COVID-19 pandemic

**Poll conducted by Clearview Research, October 3-8, 2020*

FUTURE PROJECTS

- Stations in South Florida – Aventura, Boca Raton, PortMiami
- Grade Crossing Safety projects
- Tampa Extension including new Stations, partially shared with SunRail
- Miami-Dade Commuter Rail
- Las Vegas – Southern California

brightline[®]



GoBrightline.com