

NORTHEAST CONNECTOR EXPRESSWAY: PHASE 1

PROJECT DEVELOPMENT AND ENVIRONMENT STUDY

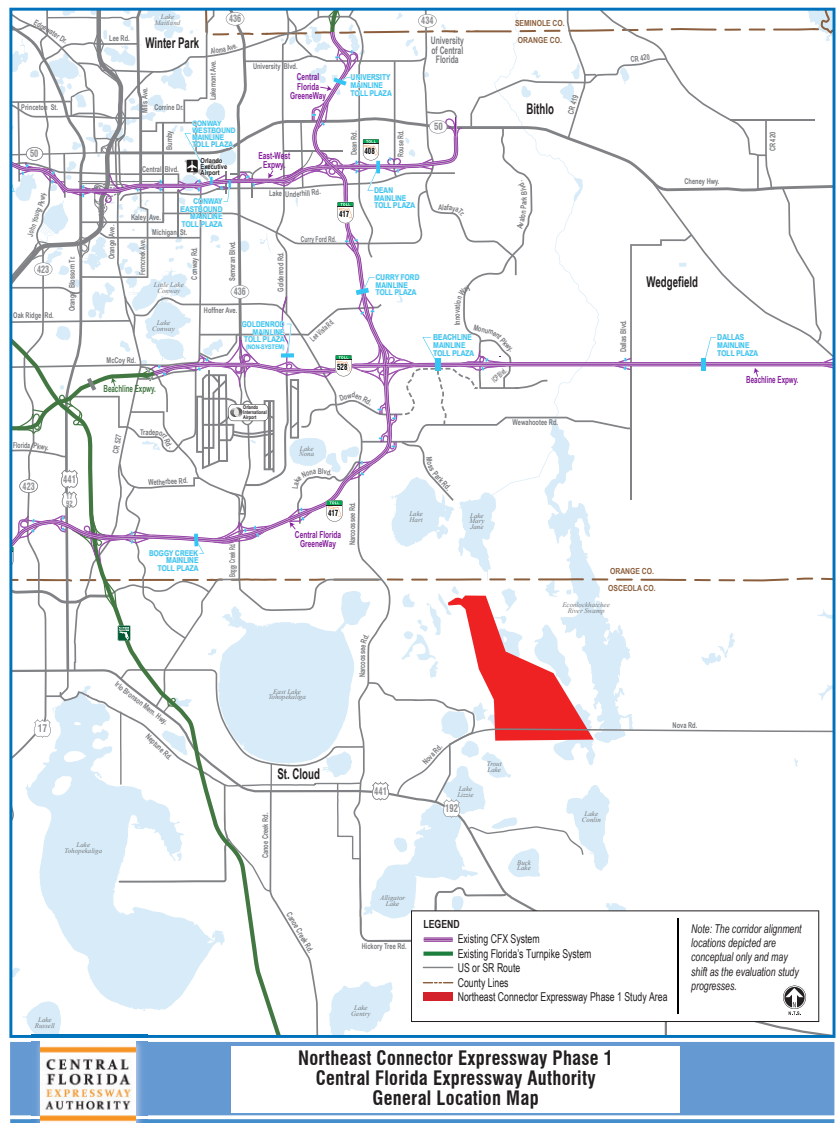
This Project Development and Environment (PD&E) study is evaluating a new 4-mile expressway connection between Nova Road and the proposed Osceola Parkway Extension in Osceola County. This potential new expressway, identified in the CFX 2040 Master Plan, would also provide a north-south connection with three major regional corridors identified in the Governor's East Central Florida Corridors Task Force recommendations.

★ STUDY GOALS

The goals of this proposed 4-mile, north-south, limited-access facility include:

- Enhance north-south mobility.
- Provide connections between existing and future east-west corridors.
- Improve system linkage and regional connectivity.
- Meet social and economic needs.
- Achieve consistency with local plans.
- Provide multimodal opportunities.
- Improve safety and emergency evacuation routes.

📍 STUDY MAP



For more information:

Kathy Putnam
Public Involvement Coordinator

- 📞 407-802-3210
- ✉ ProjectStudies@CFXway.com
- 🌐 www.CFXway.com
- 🐦 @DriveEPASS

**CENTRAL
FLORIDA
EXPRESSWAY
AUTHORITY**



The regional Central Florida Expressway Authority is responsible for the planning, design, construction, operation and maintenance of a 125-mile limited-access expressway system to serve the five-county region. CFX's system includes SR 408 (Spessard L. Holland East-West Expressway), SR 528 (Martin Andersen Beachline Expressway), SR 417 (Central Florida GreeneWay), SR 429 (Daniel Webster Western Beltway), SR 414 (John Land Apopka Expressway), SR 429 (Wekiva Parkway), SR 538 (Poinciana Parkway), State Road 453 and State Road 451.

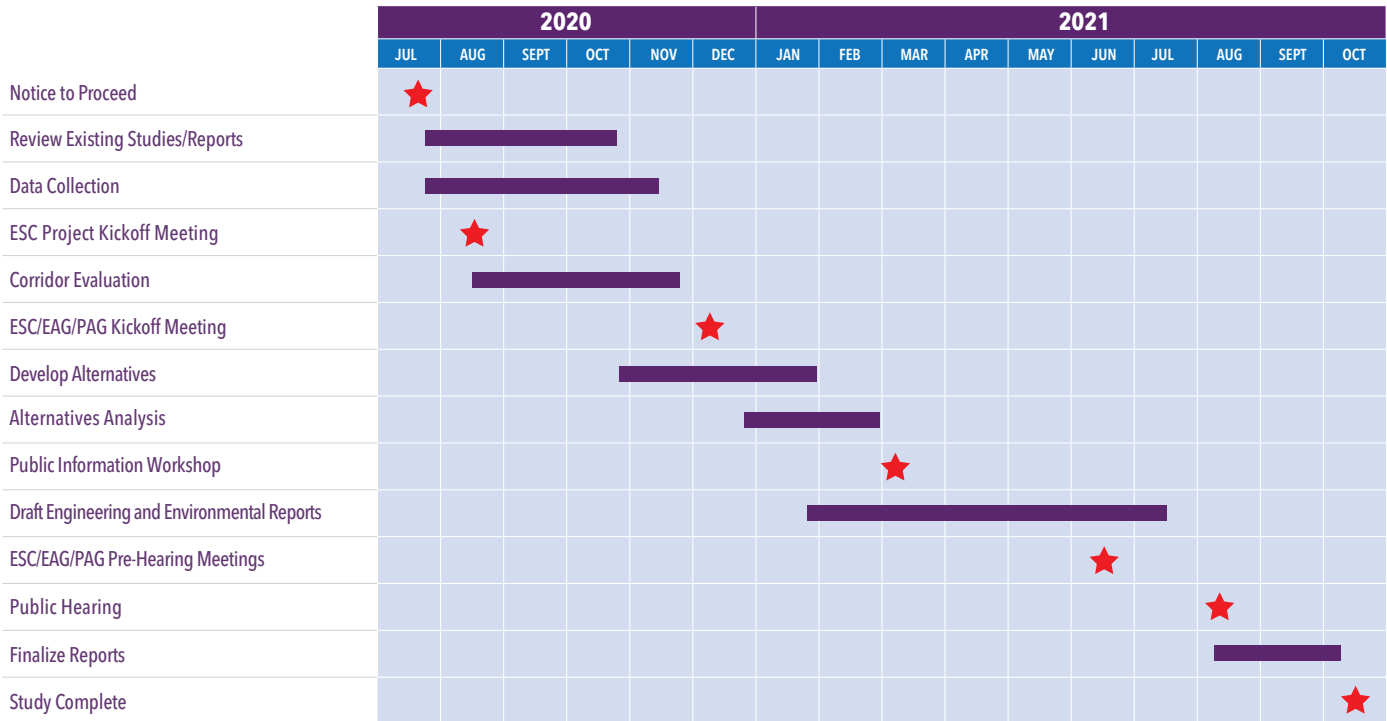
Central Florida Expressway Authority: 4974 ORL Tower Road, Orlando, FL 32807
Phone: 407.690.5000 | Fax: 407.690.5011 | Email: Info@CFXWay.com

NORTHEAST CONNECTOR EXPRESSWAY: PHASE 1

PROJECT DEVELOPMENT AND ENVIRONMENT STUDY



Northeast Connector Expressway Phase 1 Study Schedule (Subject to Change)



STUDY PARTICIPATION

We value your input. Public involvement and interagency coordination is an integral part of the PD&E study, and opportunities for public participation will be provided. CFX anticipates holding two public meetings as part of this study.

VISIT THE STUDY WEBPAGE AT: <https://bit.ly/3qnFHh7>

For more information:

Contact: Kathy Putnam, Public Involvement Coordinator

407-802-3210

ProjectStudies@CFXway.com

www.CFXway.com

[@DriveEPASS](https://twitter.com/DriveEPASS)



Public participation is solicited without regard to race, color, national origin, age, sex, religion, disability or family status. Para más información en español acerca del proyecto, por favor comuníquese con Kevin Camara al 786-859-1826 o por correo electrónico a Kevin.Camara@QCAusa.com.