

# CENTRAL FLORIDA EXPRESSWAY AUTHORITY

**AGENDA**  
**ENVIRONMENTAL STEWARDSHIP COMMITTEE MEETING**  
**June 17, 2021**  
**10:00 a.m.**

**Meeting location: Central Florida Expressway Authority**  
**4974 ORL Tower Road**  
**Orlando, FL 32807**  
**Boardroom**

**A. CALL TO ORDER**

**B. PUBLIC COMMENT**

Pursuant to Section 286.0114, Florida Statutes and CFX Rule 1-1.011, the Environmental Stewardship Committee provides for an opportunity for public comment at the beginning of each regular meeting. The Public may address the Committee on any matter of public interest under the Committee's authority and jurisdiction, regardless of whether the matter is on the Committee's agenda but excluding pending procurement issues. Each speaker shall be limited to 3 minutes. The Public may also submit written comments in advance of the meeting to be read into the record except that if the comments exceed 3 minutes in length, when read, they will only be attached as part of the minutes.

**C. APPROVAL OF MEETING MINUTES (action item)**

1. OCTOBER 22, 2020 MINUTES
2. FEBRUARY 18, 2021 MINUTES

**D. AGENDA ITEMS**

1. **SR 414 PROJECT DEVELOPMENT & ENVIRONMENT (PD&E) STUDY** – *Carnot Evans, GEC Project Manager, Dewberry (info item)*
2. **NORTHEAST CONNECTOR EXPRESSWAY PHASE 1 PROJECT DEVELOPMENT AND ENVIRONMENT (PD&E) STUDY** – *Dan Kristoff, Project Manager, RS&H (info item)*
3. **PROJECT PERMITTING UPDATE** – *Nicole Gough, Senior Environmental Specialist, Dewberry (info item)*

**E. OTHER BUSINESS**

**F. ADJOURNMENT**

(CONTINUED ON PAGE 2)

# CENTRAL FLORIDA EXPRESSWAY AUTHORITY

This meeting is open to the public.

*Section 286.0105, Florida Statutes states that if a person decides to appeal any decision made by a board, agency, or commission with respect to any matter considered at a meeting or hearing, they will need a record of the proceedings, and that, for such purpose, they may need to ensure that a verbatim record of the proceedings is made, which record includes the testimony and evidence upon which the appeal is to be based.*

*Persons who require translation services, which are provided at no cost, should contact CFX at (407) 690-5000 x5316 or by email at [Iranetta.Dennis@cfxway.com](mailto:Iranetta.Dennis@cfxway.com) at least three (3) business days prior to the event.*

*In accordance with the Americans with Disabilities Act (ADA), if any person with a disability as defined by the ADA needs special accommodations to participate in this proceeding, then they should contact the Central Florida Expressway Authority at (407) 690-5000 no later than two (2) business days prior to the proceeding.*

*Please note that participants attending meetings held at the CFX Headquarters Building are subject to certain limitations and restrictions in order to adhere to the CDC guidelines and to ensure the safety and welfare of the public.*

**C.**

**APPROVAL OF  
MEETING  
MINUTES**

# CENTRAL FLORIDA EXPRESSWAY AUTHORITY

## DRAFT MINUTES

### CENTRAL FLORIDA EXPRESSWAY AUTHORITY ENVIRONMENTAL STEWARDSHIP COMMITTEE MEETING October 22, 2020

#### Location: Virtual

Zoom Webinar by calling the toll-free number (877) 853-5257 and entering the webinar ID:  
917 2353 2091 or viewed by using the link,  
[https://cfxway.zoom.us/Environmental Stewardship Committee/10.22.20](https://cfxway.zoom.us/Environmental%20Stewardship%20Committee/10.22.20)  
and entering the passcode: 714412

#### Committee Members Appearing Virtually:

Robert Mindick, Osceola County Representative, Committee Chairman  
Jim Barfield, Brevard County Representative  
Richard Durr, Seminole County Representative  
Beth Jackson, Orange County Representative  
Charles Lee, Citizen Representative  
Brittany Sellers, City of Orlando Representative

#### Committee Member Not Present:

Timothee Sallin, Lake County Representative

#### Also Appearing Virtually:

Laura Kelley, Executive Director  
Glenn Pressimone, Chief of Infrastructure  
Michelle Maikisch, Chief of Staff/Public Affairs Officer  
Diego "Woody" Rodriguez, General Counsel  
Rita Moore, Recording Secretary/Executive Assistant  
Jim Wood, Kimley-Horn and Associates  
Sunserea Dalton, Jacobs Engineering Group  
Jason Lauritsen, Florida Wildlife Corridor

## A. CALL TO ORDER

The meeting was called to order at approximately 10:01 am by Chairman Mindick.

Recording Secretary, Rita Moore called the roll and announced there was a quorum with six (6) Committee Members present.



**B. PUBLIC COMMENT**

Mr. Woody Rodriguez, General Counsel announced there were no public comments.

**C. APPROVAL OF THE AUGUST 20, 2020 MINUTES**

A motion was made by Ms. Jackson and seconded by Mr. Lee to approve the August 20, 2020 minutes with a correction to page 5, paragraph 2, 'AJ' was corrected to read 'Ajay'. The motion carried unanimously with all six (6) members in attendance voting AYE by voice vote. Mr. Sallin was not present.

**D. EAST CENTRAL FLORIDA CORRIDORS TASK FORCE SUMMARY**

Mr. Jim Wood of Kimley-Horn and Associates presented the East Central Florida Corridors Task Force Summary. He described the background of the East Central Florida corridors task force, provided an overview of the planning approach & schedule, and the recommendations of the task force.

The Committee Members asked questions which were answered by Mr. Wood.

(This item was presented for information only. No committee action was taken.)

**E. SR 414 PROJECT DEVELOPMENT & ENVIRONMENT (PD&E) STUDY**

Ms. Sunsera Dalton of Jacobs Engineering Group presented the SR 414 Project Development & Environment PD&E Study. She described the location of the SR 414 project and the objectives of the Project Development & Environment (PD&E) study as well as the evaluation criteria.

The Committee Members asked questions which were answered by Ms. Dalton.

(This item was presented for information only. No committee action was taken.)

**F. WILDLIFE CORRIDORS**

Mr. Jason Lauritsen of Florida Wildlife Corridor presented on Wildlife Corridors. He defined what a wildlife corridor is and summarized the functions as well as the habitat patches and connectivity.

The Committee Members asked questions which were answered by Mr. Lauritsen.

(This item was presented for information only. No committee action was taken.)

**G. CFX SUSTAINABILITY PROGRAM**

Mr. Bryan Homayouni presented the CFX Sustainability Program. He described the steps that CFX is taking to commit to sustainability including deployment of photovoltaic power solutions, energy efficient buildings, and readiness for vehicle electrification.

The Committee Members asked questions which were answered by Mr. Homayouni.

(This item was presented for information only. No committee action was taken.)

**H. OTHER BUSINESS**

No other business was discussed.

**I. ADJOURNMENT**

Chairman Mindick adjourned the meeting at approximately 12:10 p.m.

Minutes approved on \_\_\_\_\_, 2021.

*Pursuant to the Florida Public Records Law and CFX Records Management Policy, audio tapes of all Board and applicable Committee meetings are maintained and available upon request to the Records Management Liaison Officer at [publicrecords@CFXway.com](mailto:publicrecords@CFXway.com) or 4974 ORL Tower Road, Orlando, FL 32807.*

# CENTRAL FLORIDA EXPRESSWAY AUTHORITY

## DRAFT MINUTES

### CENTRAL FLORIDA EXPRESSWAY AUTHORITY ENVIRONMENTAL STEWARDSHIP COMMITTEE MEETING February 18, 2021

#### Location: Virtual

Zoom Webinar by calling the toll-free number (877) 853-5257 and entering the webinar ID:  
917 2353 2091 or viewed by using the link,

[https://cfxway.zoom.us/Environmental Stewardship Committee/02.18.21](https://cfxway.zoom.us/Environmental%20Stewardship%20Committee/02.18.21)

and entering the passcode: 714412

#### Committee Members Appearing Virtually:

Robert Mindick, Osceola County Representative, Committee Chairman  
Jim Barfield, Brevard County Representative  
Richard Durr, Seminole County Representative  
Beth Jackson, Orange County Representative  
Charles Lee, Citizen Representative  
Brittany Sellers, City of Orlando Representative

#### Committee Member Not Present:

Timothee Sallin, Lake County Representative

#### Others Appearing Virtually:

Laura Kelley, Executive Director  
Michelle Maikisch, Chief of Staff/Public Affairs Officer  
Rita Moore, Recording Secretary/Executive Assistant  
Laura Newlin Kelly, Associate General Counsel  
Glenn Pressimone, Chief of Infrastructure  
Ralph Bove, Volkert, Inc.  
Dan Kristoff, RS&H, Inc.  
Clif Tate, Kimley-Horn and Associates

## A. CALL TO ORDER

The meeting was called to order at approximately 10:01 am by Chairman Mindick.

Recording Secretary, Rita Moore called the roll and announced there was a quorum with six (6) Committee Members present.

**B. PUBLIC COMMENT**

Ms. Rita Moore, Recording Secretary announced there were no public comments.

**C. REVIEW OF THE OCTOBER 22, 2020 MINUTES**

Discussion ensued regarding the detail level of the minutes.

Ms. Laura Kelley, Executive Director explained that the Board approved the motion-based style of minutes.

A recommendation was made to include a link to the recording of the meeting for anyone requiring more detail around the agenda items.

**D. AGENDA ITEMS**

**1. OSCEOLA/BREVARD COUNTY CONNECTOR CONCEPT, FEASIBILITY AND MOBILITY (CF&M) STUDY**

Mr. Clif Tate of Kimley-Horn and Associates presented the Osceola/Brevard County Connector Concept, Feasibility and Mobility (CF&M) Study. He described the study objective & methodology as well as the previous Environmental Stewardship Committee (ESC), Environmental Advisory Group (EAG) & Project Advisory Group (PAG) input and the alternatives identified based on the input.

The Committee Members asked questions which were answered by Mr. Wood.

(This item was presented for information only. No committee action was taken.)

**2. NORTHEAST CONNECTOR EXPRESSWAY PHASE 1 PROJECT DEVELOPMENT AND ENVIRONMENT (PD&E) STUDY**

Mr. Dan Kristoff of RS&H, Inc. presented the Northeast Connector Expressway Phase 1 Project Development and Environment (PD&E) Study. He described the projects goals & objectives. He outlined the advisory groups input and how the input was being utilized as well as the study area & corridor revisions.

The Committee Members asked questions which were answered by Mr. Kristoff.

(This item was presented for information only. No committee action was taken.)

### **3. SOUTHPORT CONNECTOR PROJECT DEVELOPMENT AND ENVIRONMENT (PD&E) STUDY**

Mr. Ralph Bove of Volkert, Inc. presented the Southport Connector Project Development and Environment (PD&E) Study. He described the projects goals & objectives. He outlined the advisory groups input and how the input was being utilized as well as the study area & corridor revisions.

The Committee Members asked questions which were answered by Mr. Bove.

(This item was presented for information only. No committee action was taken.)

### **4. WILDLIFE CORRIDOR DISCUSSION**

Chairman Mindick discussed the importance of wildlife corridors for the future of road design and construction. He recommended several books to the Committee Members on the topic of Wildlife Corridors.

(This item was presented for information only. No committee action was taken.)

### **E. OTHER BUSINESS**

Chairman Mindick stated, per the charter, today's meeting would be his last as the Environmental Stewardship Committee Chairman and the new Environmental Stewardship Committee Chairman would be Timothee Sallin (Lake County Representative).

### **F. ADJOURNMENT**

Chairman Mindick adjourned the meeting at approximately 12:10 p.m.

Minutes approved on \_\_\_\_\_, 2021.

*Pursuant to the Florida Public Records Law and CFX Records Management Policy, audio tapes of all Board and applicable Committee meetings are maintained and available upon request to the Records Management Liaison Officer at [publicrecords@CFXway.com](mailto:publicrecords@CFXway.com) or 4974 ORL Tower Road, Orlando, FL 32807.*

# **D.1**

## **SR 414 PROJECT DEVELOPMENT & ENVIRONMENT (PD&E) STUDY**



**State Road 414 Expressway Extension  
Project Development and Environment Study**

**Environmental Stewardship Committee Meeting**

**— June 17, 2021 —**

Carnot Evans, PE, Dewberry



# Agenda

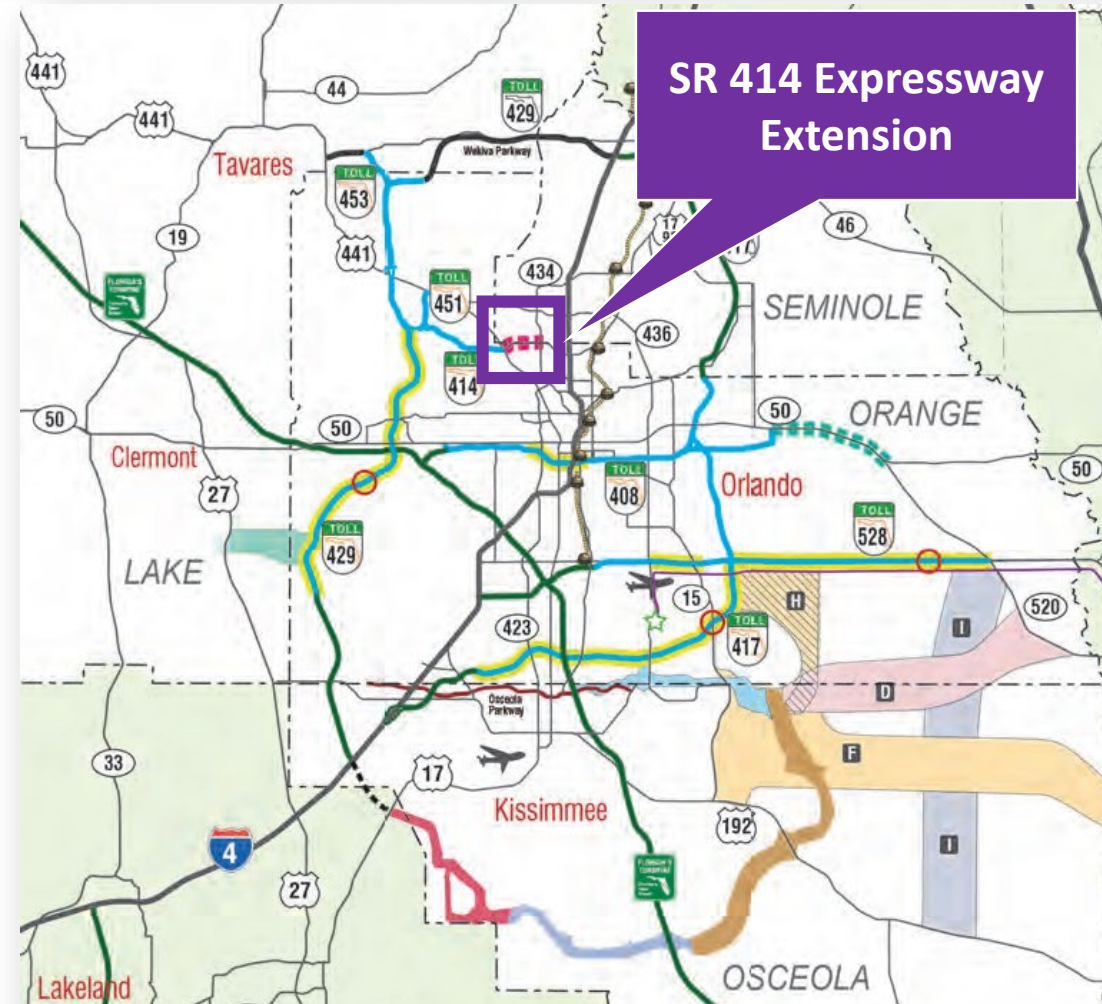
- Review
  - Project Background and Objectives
  - Committee & Advisory Groups Input
  - Agency & Stakeholder Coordination
- Today's Meeting Update
  - Project Alternative
  - Environmental Considerations
- Next Steps – Meetings and Schedule





# Project Background

- SR 414 Reversible Express Lanes Schematic Technical Memorandum – Completed in 2019
- CFX Visioning + 2040 Master Plan – Adopted in 2016
- CFX Five-Year Work Program FY2022-FY2026
- MetroPlan Orlando Transportation Improvement Program FY2020/21-FY2024/25

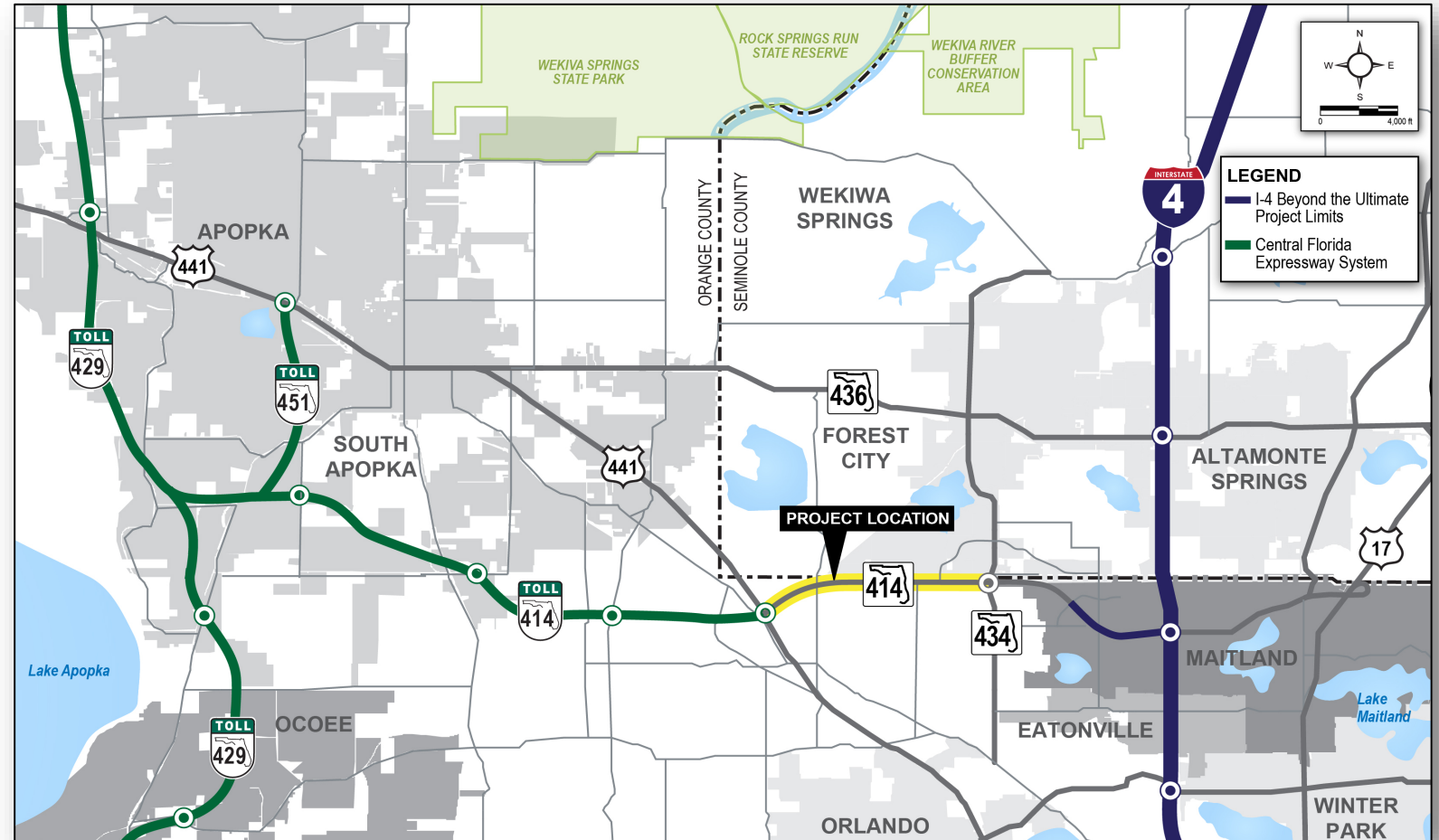


Source = CFX 2040 Master Plan

# Regional Location Map

## Jurisdictional Agencies & Municipalities

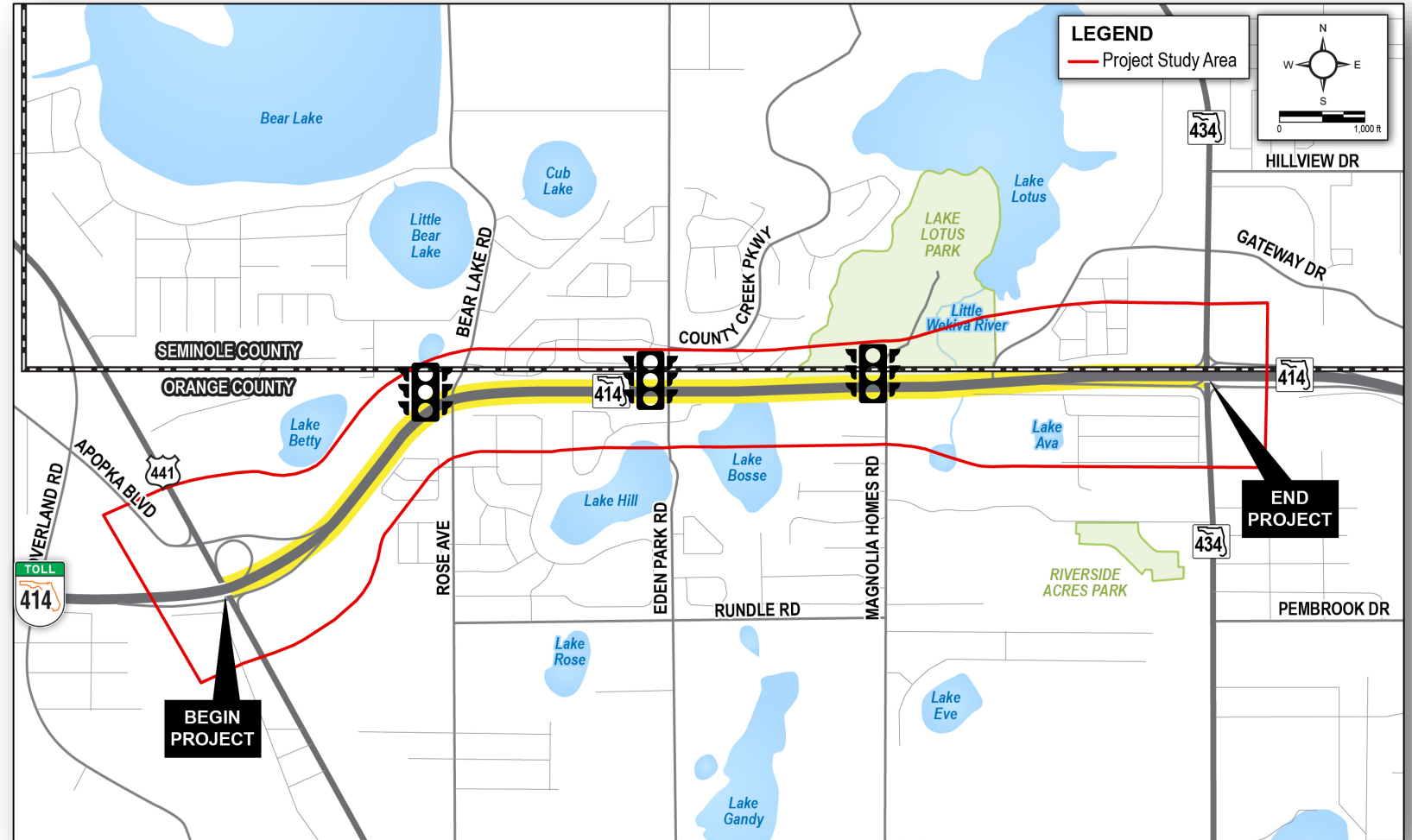
- CFX
- FDOT District 5
- City of Maitland
- City of Altamonte Springs
- Orange County
- Seminole County



# Project Location Map

## Study Corridor

- From US 441 to SR 434
- 4-lane divided arterial
- Approximately 2.3 miles
- 3 existing signalized intersections
- 1 existing unsignalized intersection



# Purpose and Need



**Provide Capacity**



**Improve Regional  
Connectivity**



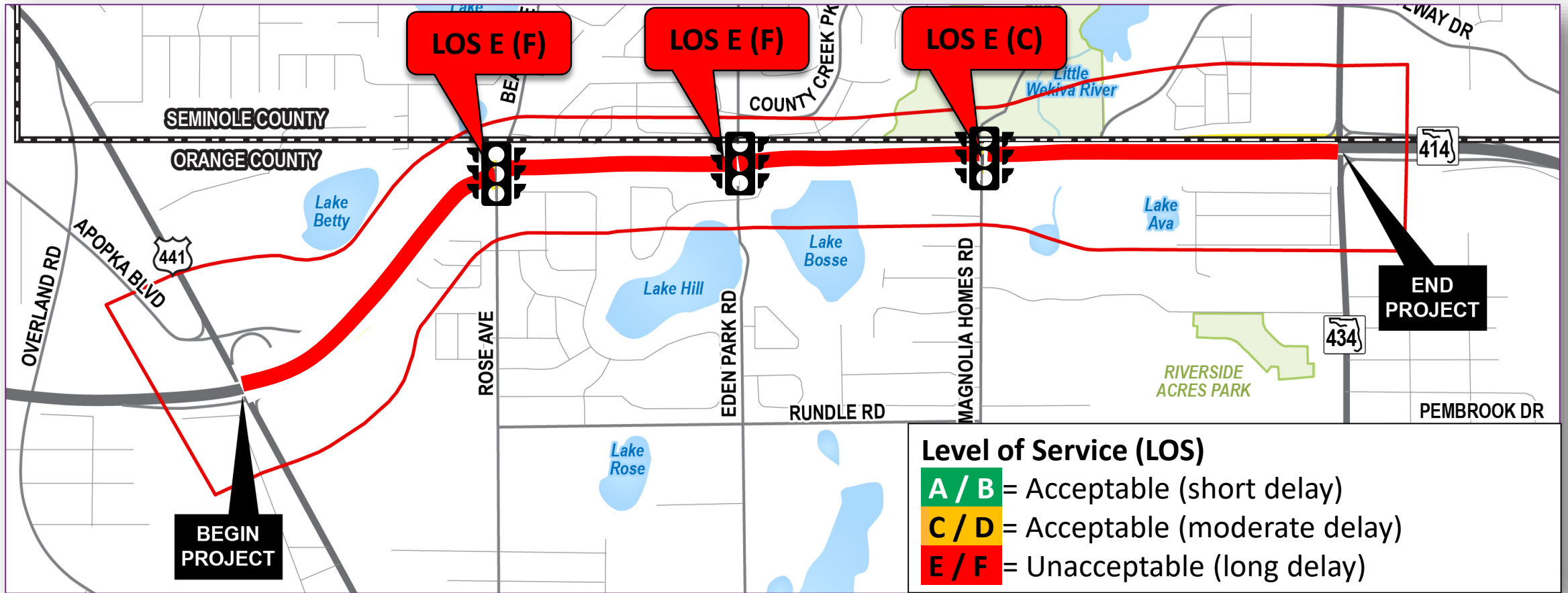
**Enhance Safety**



**Support Multimodal  
Opportunities**

# Purpose and Need

## Future NO-BUILD 2045 Level of Service - AM (PM)



Source: CFX Traffic Consultant (January 2021)



# PD&E Study Objectives

**Evaluate Proposed Alternatives to provide a limited access connection within the study limits, including:**

- Intersection improvements
- Bridge modifications at Lake Bosse and Little Wekiva River
- Stormwater management facilities
- Pedestrian and bicycle needs
- Access management modifications

**Analyze and document potential impacts to:**

- Social, Cultural, Natural and Physical Resources

# Environmental Stewardship Committee Input

- ✓ Updated Stakeholders list
- ✓ Erosion issues surrounding Little Wekiva Canal
- ✓ Evaluate trail connectivity opportunities
- ✓ Minimize impacts to wetlands and habitats associated with Lake Bosse and Lake Lotus
- ✓ Geotechnical and archaeological issues with Lake Bosse bridge
- ✓ Noise and aesthetic impacts to surrounding residents



# Advisory Groups (EAG/PAG) Input

- ✓ Ensure Lake Lotus Park access
- ✓ Minimize water quality impacts
- ✓ Evaluate expanded sidewalks or shared use path along Maitland Boulevard
- ✓ Evaluate geotechnical and archaeological issues at Lake Bosse bridge
- ✓ Minimize noise and environmental impacts
- ✓ Continue coordination with Orange County and FDOT for the proposed Regional Stormwater Treatment Facility
- ✓ Evaluate expanded signage for driver navigation
- ✓ Consideration for multimodal opportunities

## Environmental Advisory Group



## Project Advisory Group





# Key Stakeholder Coordination & Input

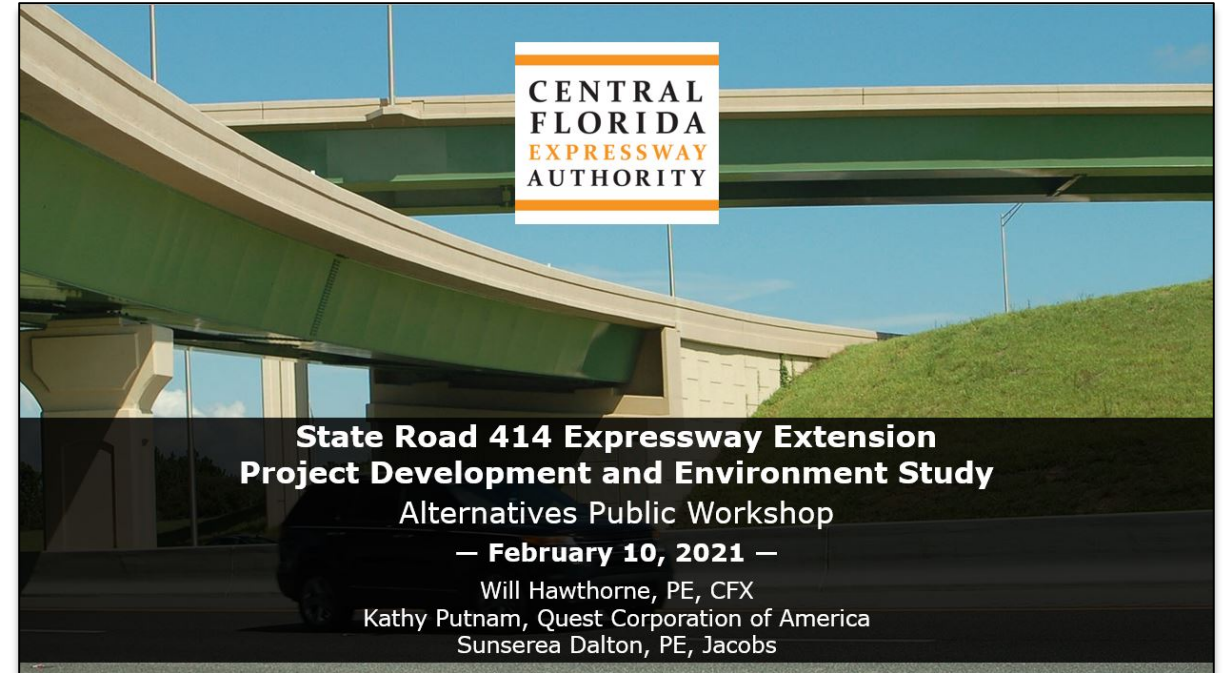


- ✓ Maintain Lake Lotus Park access
- ✓ Consideration of erosion issues surrounding Little Wekiva Canal
- ✓ Continued coordination for Regional Stormwater Treatment Facility
- ✓ Evaluate trail connectivity and shared use path opportunities
- ✓ Ensure consensus on signage during design
- ✓ Minimize impacts to wetlands and habitats associated with Lake Bosse and Lake Lotus
- ✓ Evaluate geotechnical and archaeological issues with Lake Bosse bridge
- ✓ Consideration of noise, aesthetic and environmental impacts to surrounding residents
- ✓ Identified existing utilities

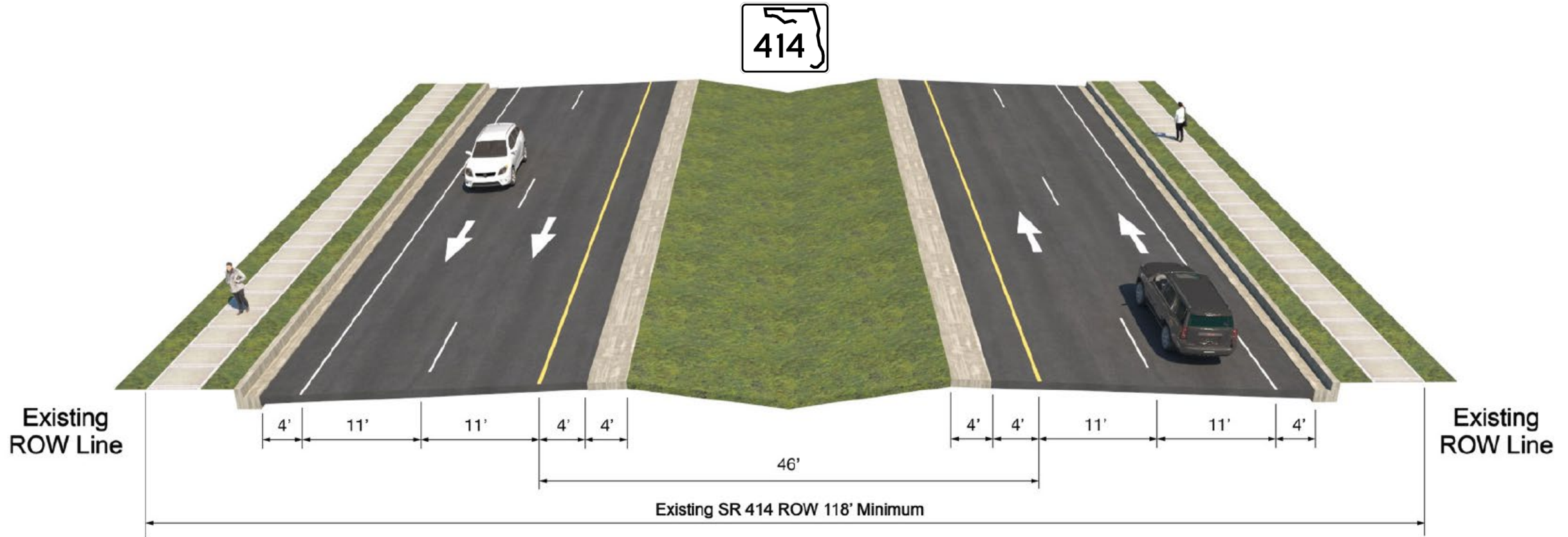
# Public Input

## Virtual Alternatives Public Workshop (February 10, 2021)

- 104 virtual attendees
- 151 questions & comments relating to:
  - Construction timeline
  - Noise mitigation
  - Safety improvements
  - Property value
  - Typical Section
  - Access and tolling



# Existing Typical Section - Maitland Blvd.



Posted Speed Limit 50-55 mph



# Potential Typical Section



5-Foot Sidewalks



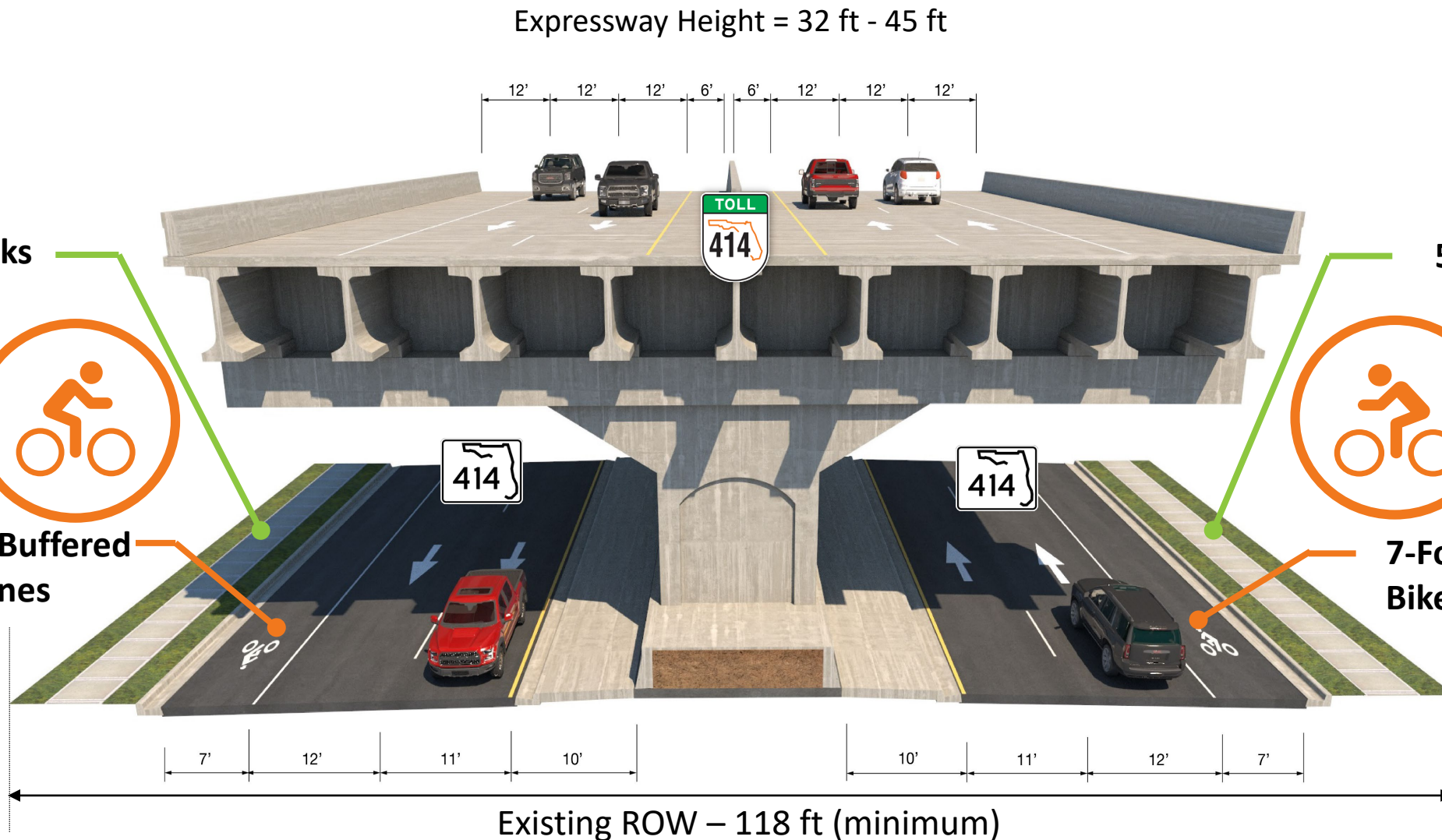
5-Foot Sidewalks



7-Foot Buffered  
Bike Lanes



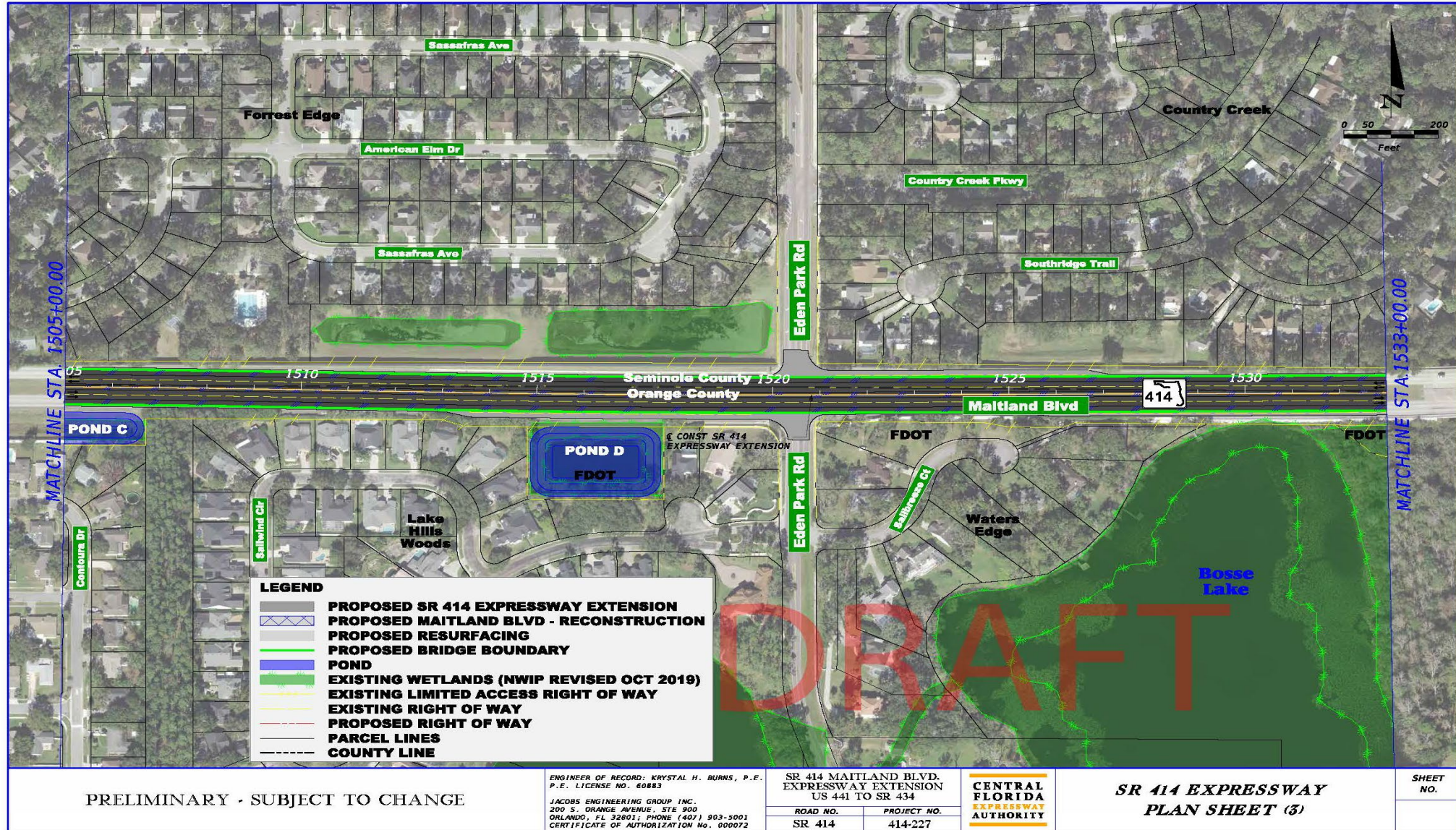
7-Foot Buffered  
Bike Lanes



\*Bridge Aesthetics still under development

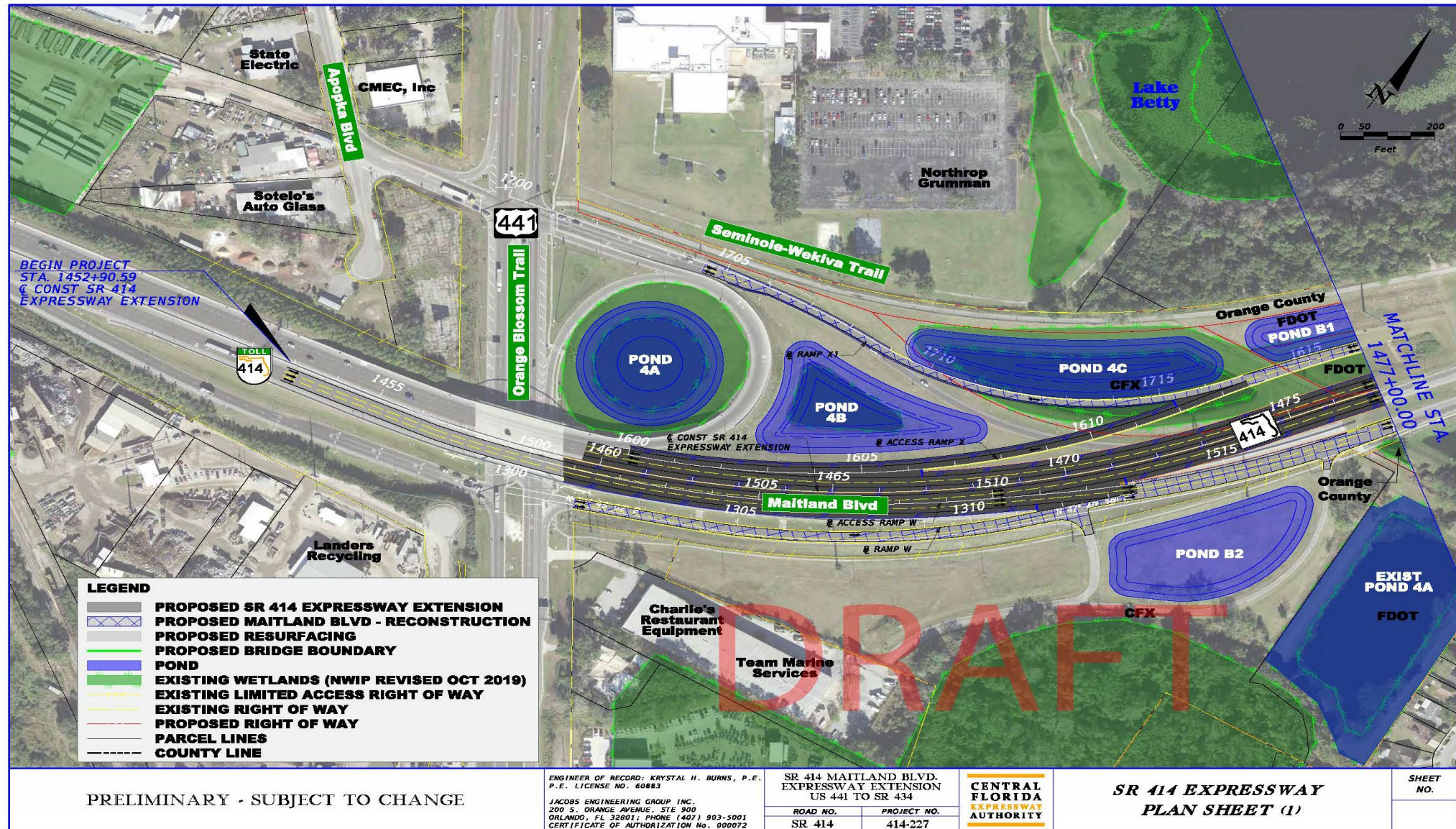


# Preliminary Concept Plans





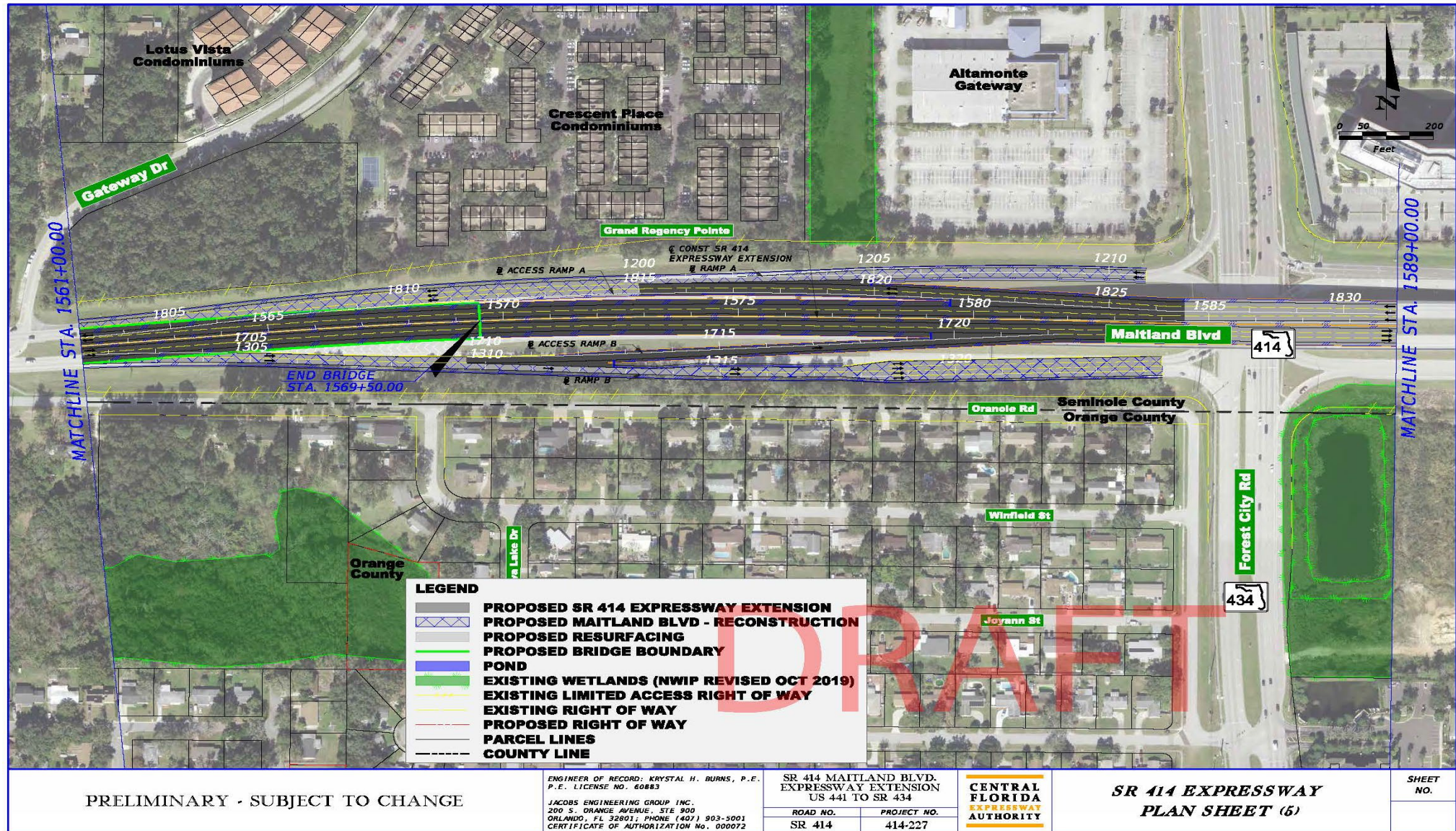
# Preliminary Concept Plans



PRELIMINARY - SUBJECT TO CHANGE



# Preliminary Concept Plans



PRELIMINARY - SUBJECT TO CHANGE



# Multimodal Considerations

## Existing Conditions:

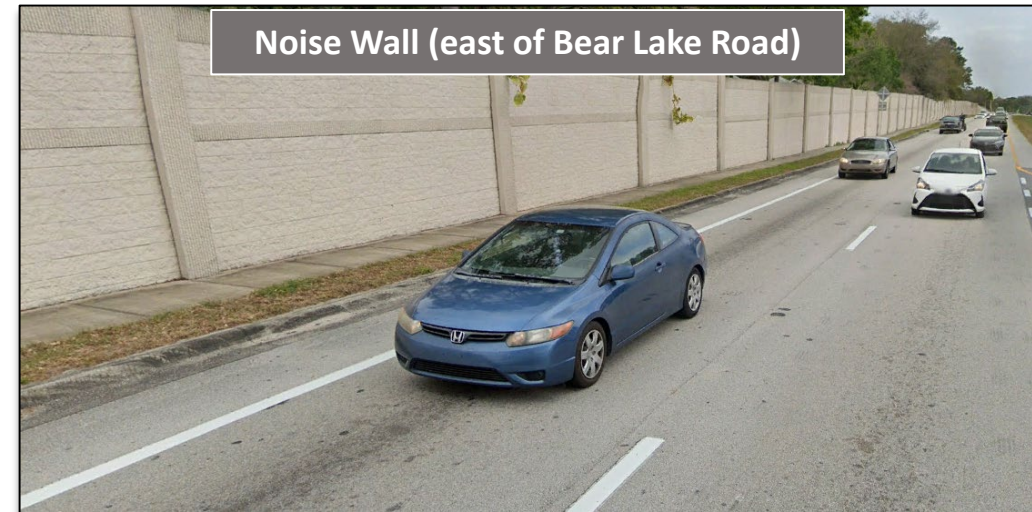
- Seminole Wekiva Trail
- 5-foot sidewalks
- Designated bike lanes
- Lake Lotus Park pedestrian underpass

## Alternative Evaluations include:

- Wider sidewalks
- Buffered bike lanes
- Trail connectivity

## Sidewalk Constraints:

- Lake Bosse Bridge
- East of Bear Lake Road intersection





# Social Constraints



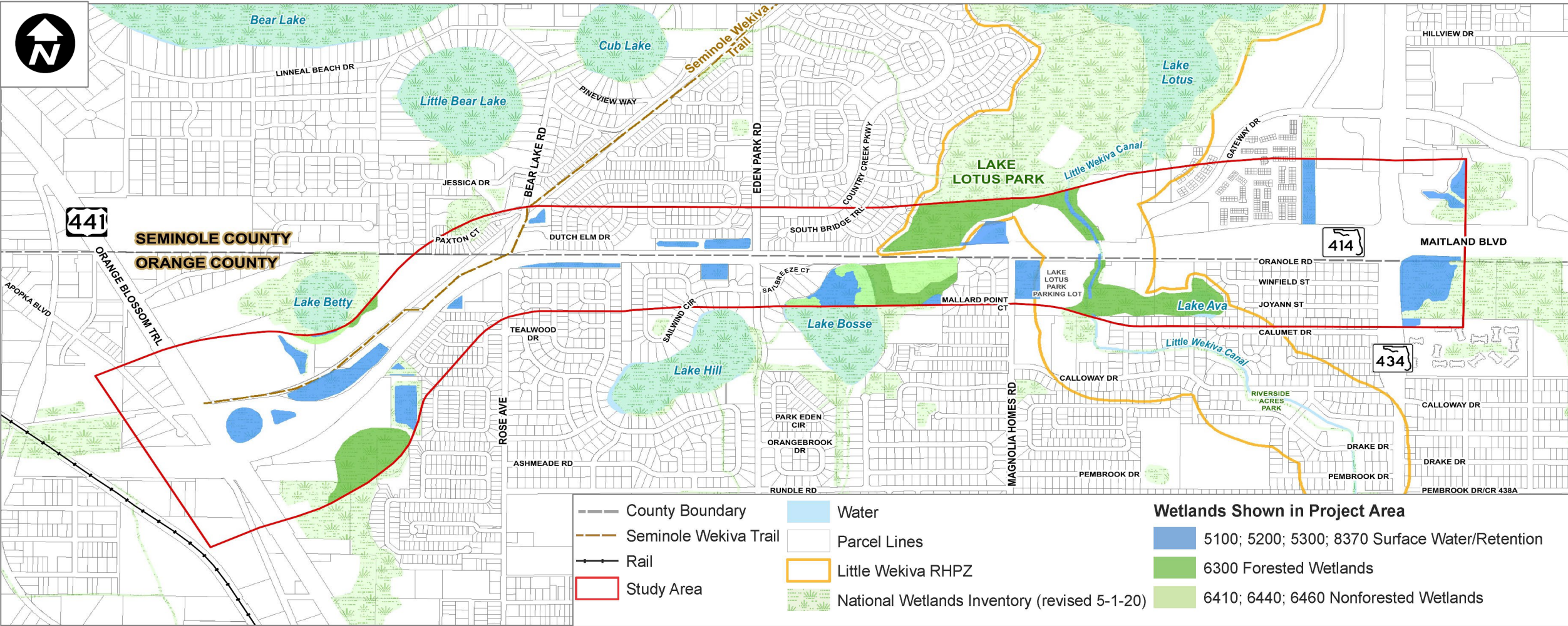


# Social Constraints





# Natural Constraints



# Additional Environmental Considerations

## Cultural

- No significant Archaeological or Historical resources

## Physical

- 4 potential medium risk contamination sites
- Major utilities:
  - City of Altamonte & FDOT A-FIRST Project
  - Duke Energy
  - AT&T



# Preliminary Environmental Evaluation

Evaluation Factors		No-Build Alternative*	Build Alternative
<b>SOCIAL</b>	Total Acres of Impacts	0 acres	0 acres anticipated
	Total Parcels Affected:	None	0 parcels anticipated
	- <i>Potential Residential Parcels Affected</i>	None	0 parcels anticipated
	- <i>Potential Non-Residential Parcels Affected</i>	None	0 parcels anticipated
	Potential Displacements	None	None anticipated
<b>CULTURAL</b>	Potential Community Uses Affected	None	None anticipated
	- <i>Seminole Wekiva Trail</i>	None	None anticipated
	- <i>Lake Lotus Park</i>	None	None anticipated
	- <i>Other</i>	None	None anticipated
	Potential Impacts to Historic/Archaeological Resources	None	None anticipated
<b>NATURAL</b>	Potential Impacts to Wetlands and Surface Waters	Minimal (TBD)	Minimal (TBD)
	Potential Impacts to Threatened and Endangered Species Habitat	Minimal (TBD)	Minimal (TBD)
<b>PHYSICAL</b>	Impacted Noise Sensitive Areas	TBD	TBD
	Impacted Potential Medium/High Contamination Risk Sites	Minimal (TBD)	Minimal (TBD)
	Potential Utility Conflicts	TBD	Moderate (TBD)

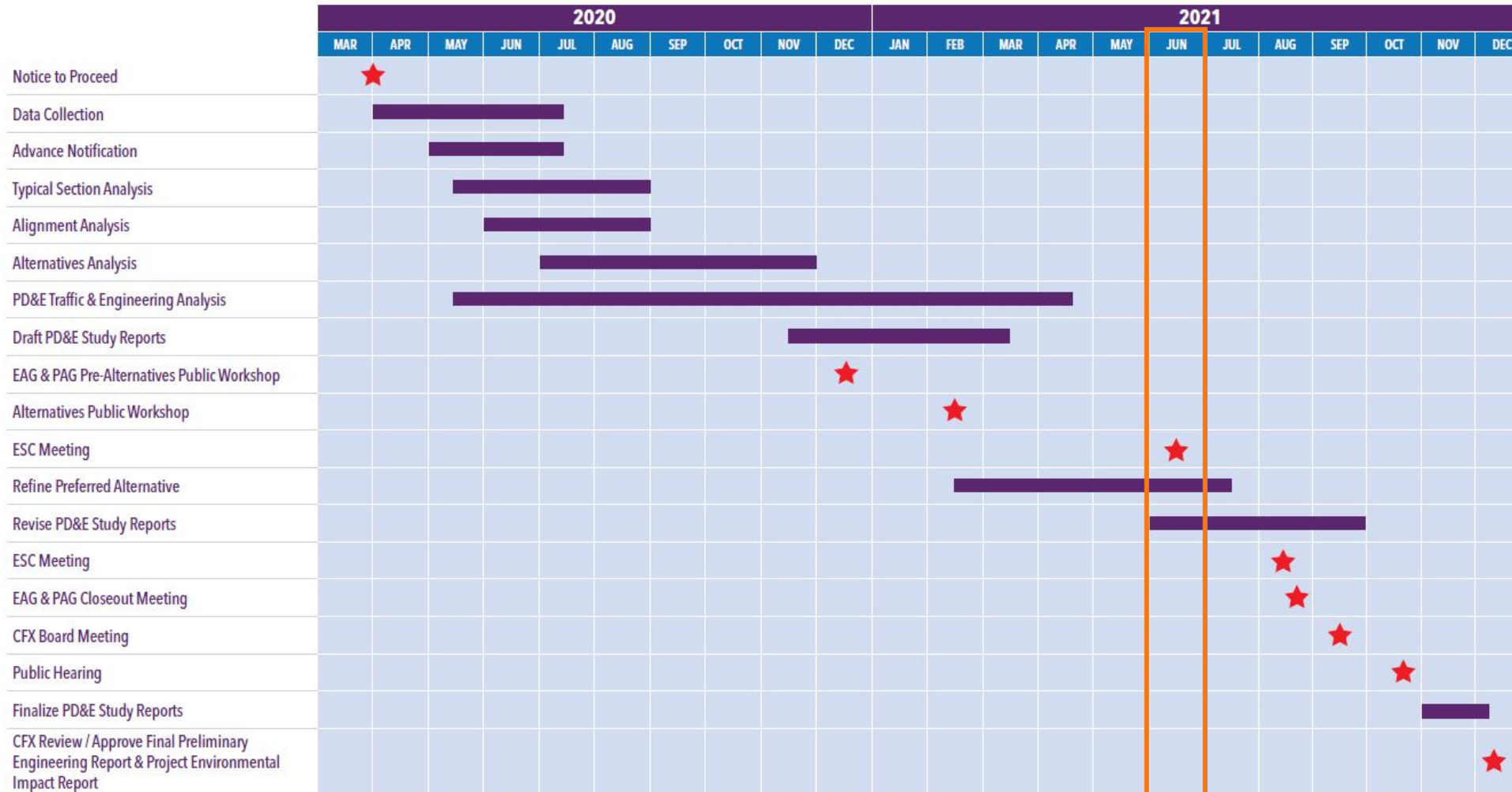
\*No Build Condition = 6 lanes on Maitland Blvd. from US 441 to SR 434

TBD = To be determined



# PD&E Schedule

## SR 414 Expressway Extension PD&E Study (Subject to Change)



# Next Steps

**Alternatives Refinement**

**EAG/PAG Meeting #2 (August 2021)**

**Final study documents (Sep. 2021)**

**Public Hearing (October 2021)**

# Project Contact

## For more information contact:

Kathy Putnam  
Public Involvement Coordinator  
407-802-3210  
[ProjectStudies@CFXway.com](mailto:ProjectStudies@CFXway.com)

Carnot W. Evans, PE  
Project Manager (for Dewberry)  
321-354-9757  
[cevans@Dewberry.com](mailto:cevans@Dewberry.com)

CFX web address:  
[www.CFXway.com](http://www.CFXway.com)  
Shortened study web address:  
<https://bit.ly/2KLmliP>

Sunserea Dalton, PE  
Consultant Project Manager  
321-279-7566  
[sunserea.dalton@jacobs.com](mailto:sunserea.dalton@jacobs.com)



An aerial photograph of a multi-lane highway with a toll plaza. The highway has several lanes in each direction, with a white SUV in the left lane and a few other vehicles further ahead. Overhead signs indicate a toll of 1 mile, with options for E-PASS (or pay by plate) and cash lanes. The left side of the highway is bordered by a dense line of trees, and the right side is a grassy embankment. A large white box with orange borders is centered over the highway, containing the text 'CENTRAL FLORIDA EXPRESSWAY AUTHORITY'. A large white 'THANK YOU!' is superimposed across the bottom half of the image.

**CENTRAL  
FLORIDA  
EXPRESSWAY  
AUTHORITY**

**THANK YOU!**



**D.2**  
**NORTHEAST**  
**CONNECTOR**  
**EXPRESSWAY**  
**PHASE 1 PROJECT**  
**DEVELOPMENT AND**  
**ENVIRONMENT**  
**(PD&E) STUDY**



**Northeast Connector Expressway – Phase 1  
Project Development and Environment (PD&E) Study  
Environmental Stewardship Committee  
– June 17, 2021 –**

Dan Kristoff, PE, RS&H

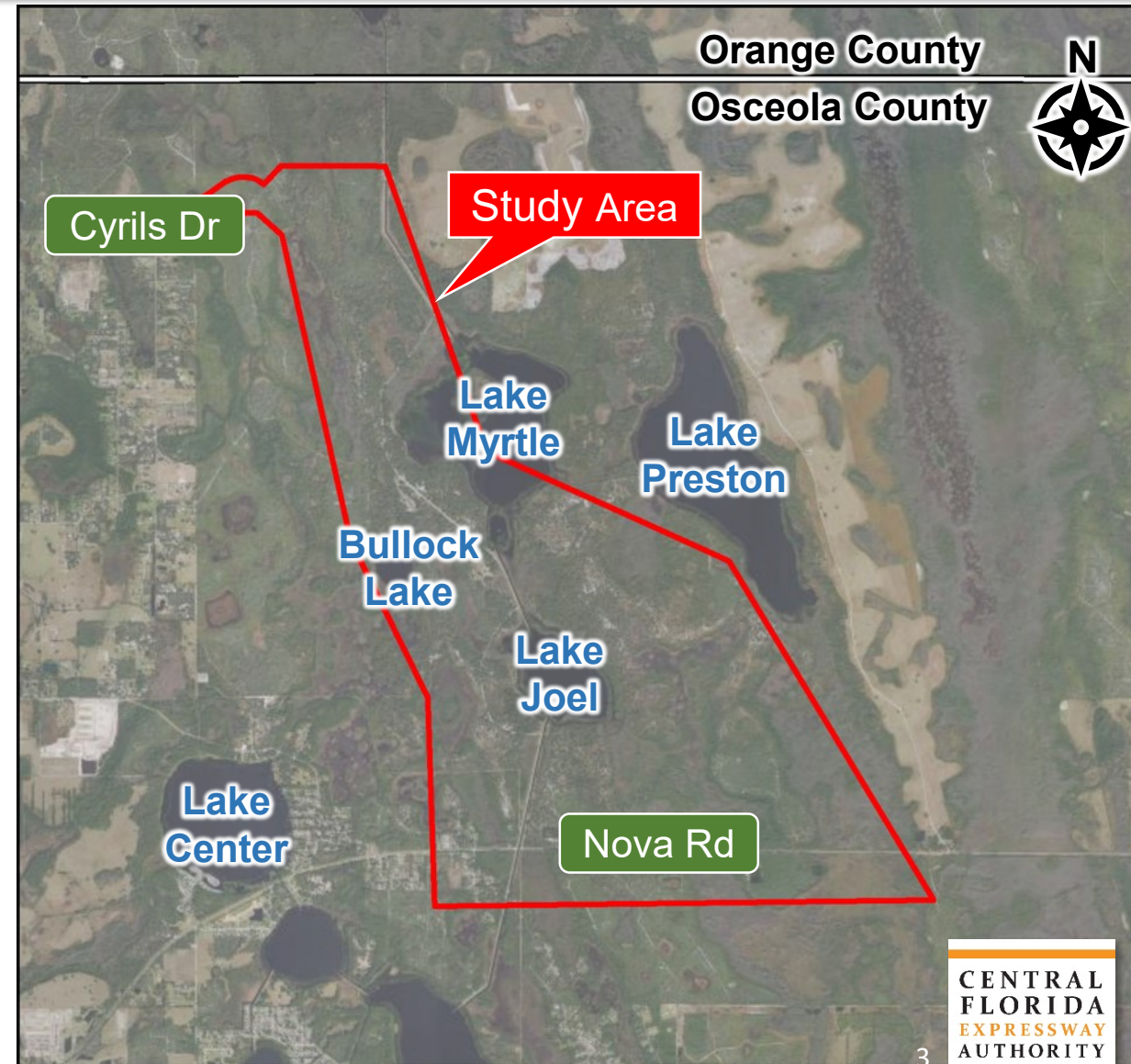
# Project Goals

- Enhance north-south mobility.
- Provide connections between existing and future east-west corridors.
- Improve system linkage and regional connectivity.
- Meet social and economic needs.
- Achieve consistency with local plans.
- Provide multimodal opportunities.
- Improve safety and emergency evacuation routes.



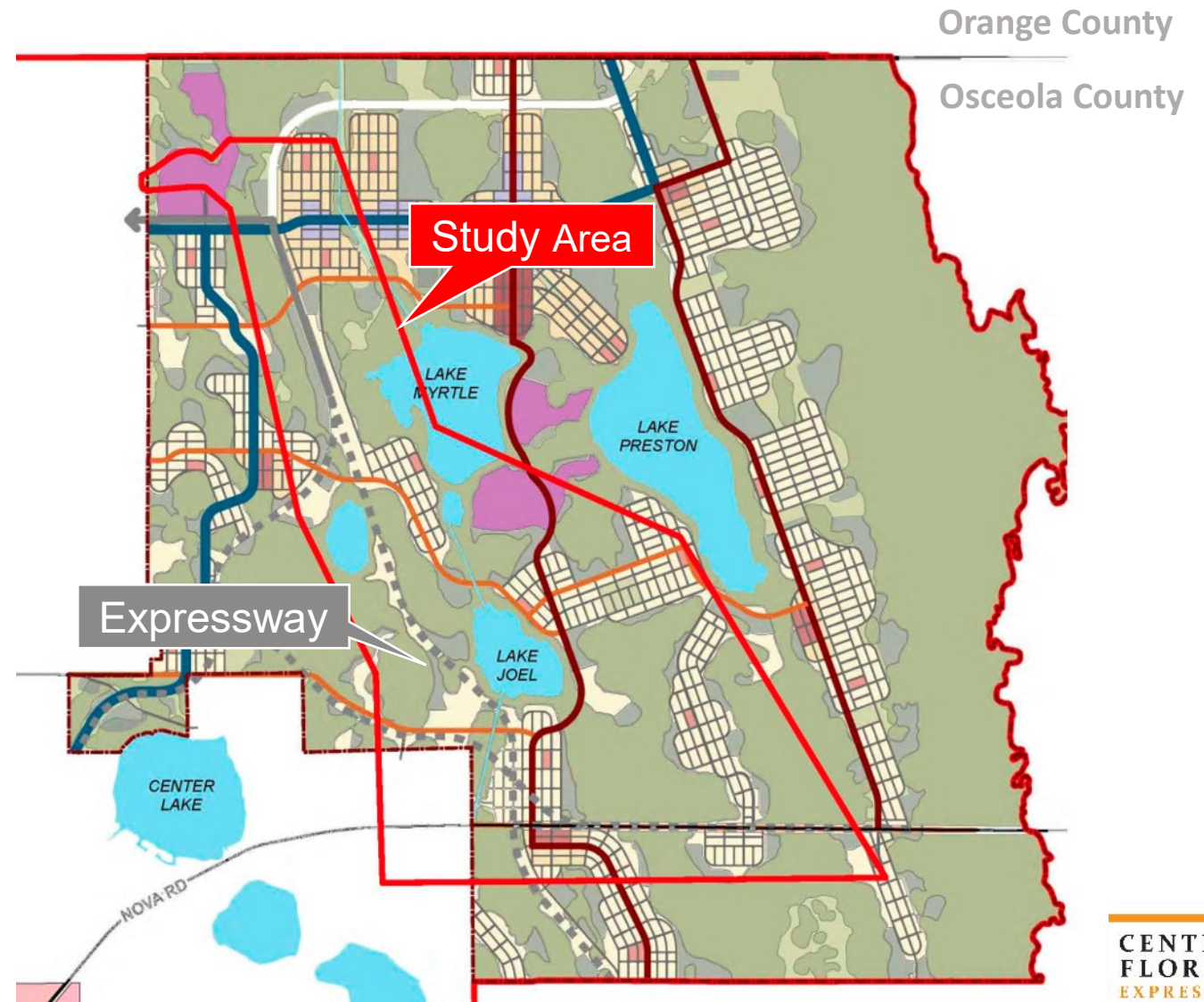
# Study Area

- Cyrils Drive to Nova Road
  - 4.4 Miles
- Tolled expressway with multi-modal opportunities
- Segment of a future connection linking SR 417 to I-95



# Northeast District Master Plan

- Adopted by Osceola County in 2010





# CFX 2040 Master Plan



Northeast Connector Expressway – Phase 1

**LEGEND**

- Existing CFX System
- Wekiva Parkway (CFX)
- Wekiva Parkway (FDOT)
- Existing Florida's Turnpike System
- Existing Osceola Parkway
- Potential SR 408 Eastern Extension
- Potential Lake/Orange Connector
- Potential SR 414 Direct Connector

**East Central Florida Corridor Task Force Recommendations**

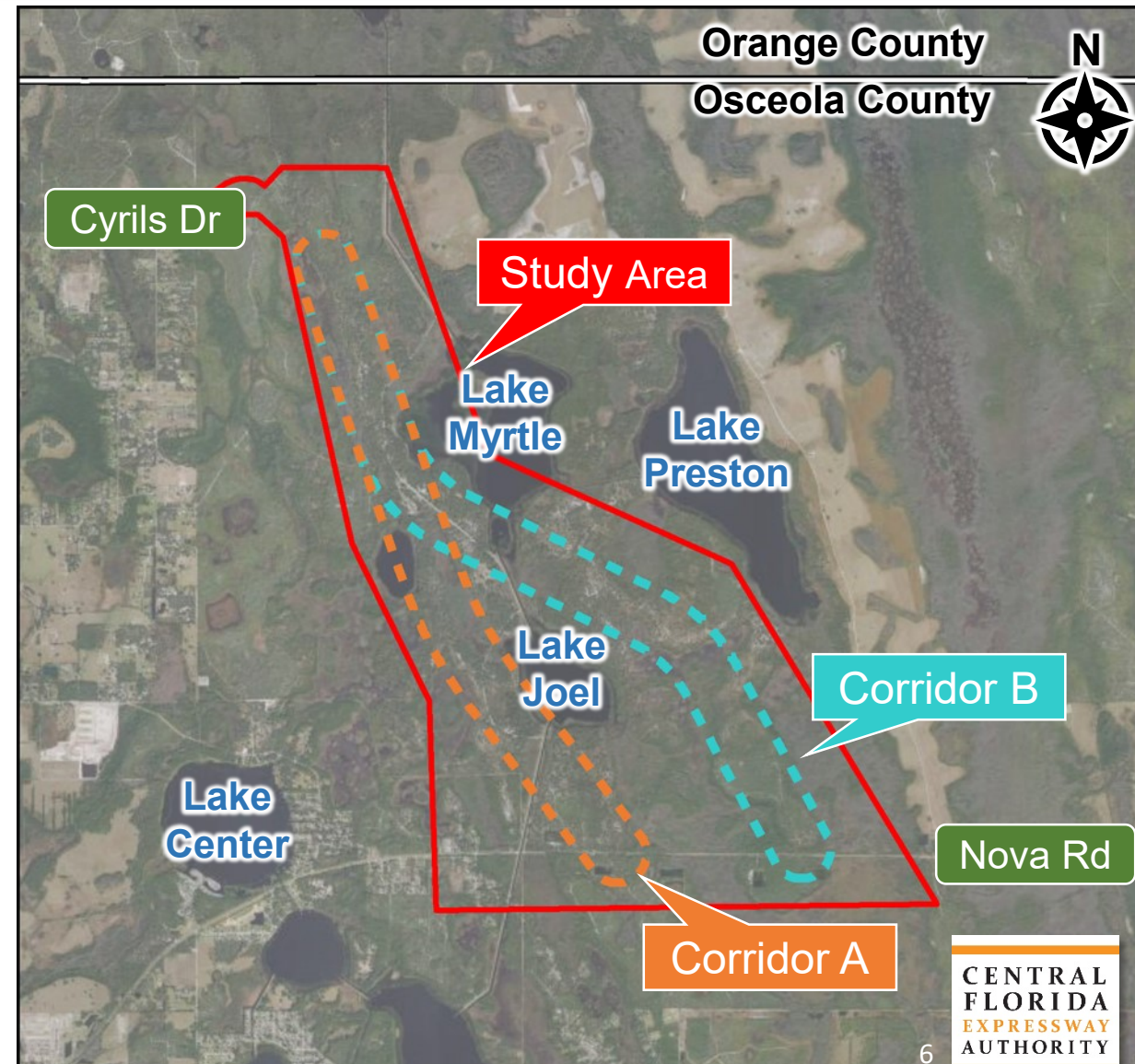
- Corridor **D**
- Corridor **F**
- Corridor **H**
- Corridor **I**

**OCX Master Plan**

- Northwest Connector Expressway
- Osceola Parkway Extension
- Poinciana Parkway
- Southport Connector Expressway
- I-4 Connector (Osceola)

# Selected Corridor

- Corridor A
  - Follows Northeast District Conceptual Master Plan alignment.
  - Input from directly affected stakeholders.
  - Support from EAG and PAG.
  - Evaluation of social, environmental, and engineering factors.





# Environmental Stewardship Committee Input Received

- Upland species should be looked at carefully in the study area.
- Evaluate wildlife corridors in the study area that incorporate both wetlands and uplands.
- Coordinate with Deseret Ranches and Tavistock on preserving land.
- Concurrence on moving forward with Corridor A.

# Environmental Advisory Group Input Received

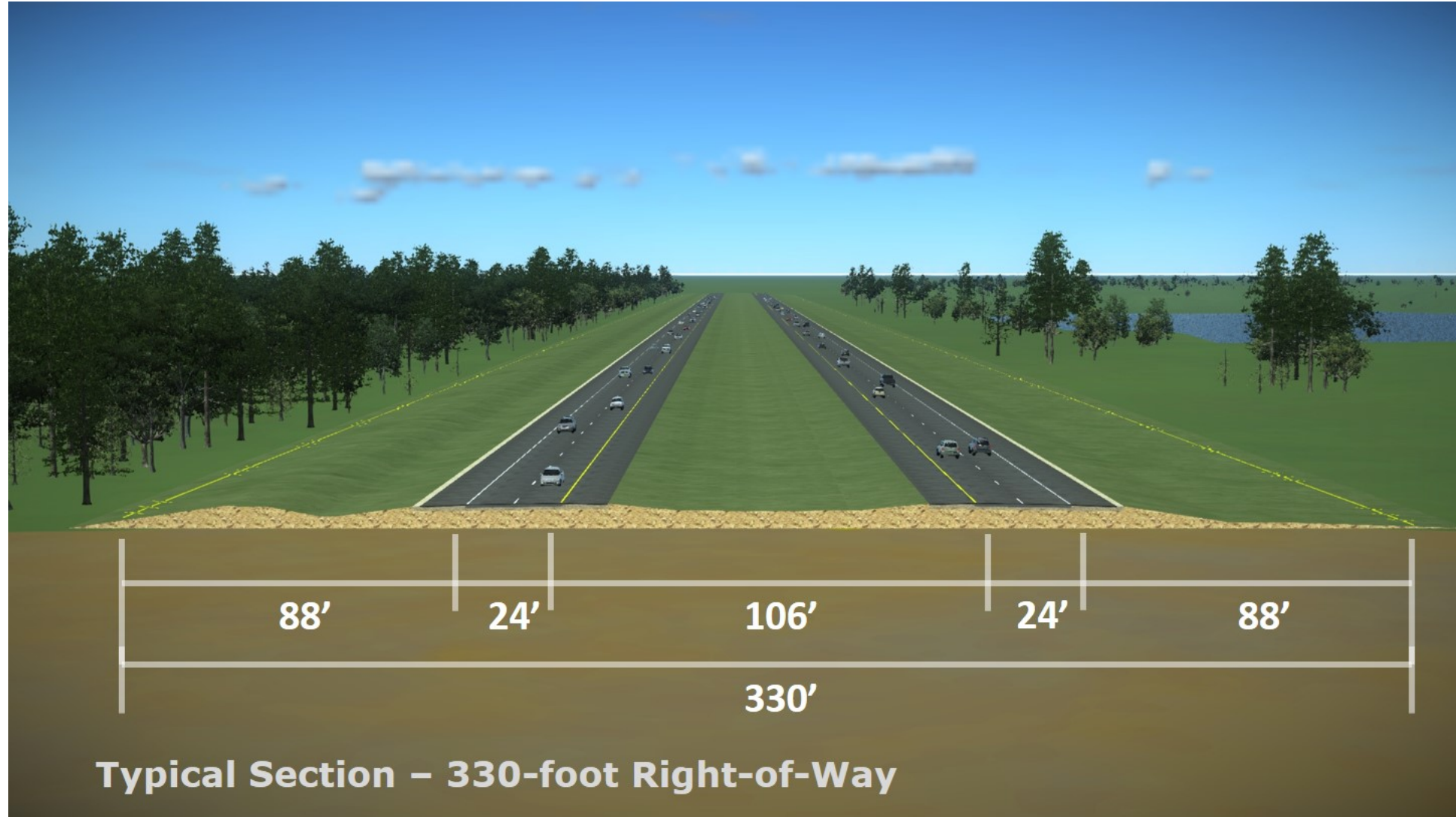
- Consensus with moving forward with Corridor A.
  
- As study progresses consider development of wildlife corridors that accommodate upland species.
  - Involve USFWS in identifying wildlife crossings.
  - Evaluate the conservation land identified in the Northeast District Conceptual Master Plan for wildlife corridor opportunities.

# Project Advisory Group Input Received

- ✓ Consensus with moving forward with Corridor A.
- ✓ Project is consistent with Northeast District Conceptual Master Plan, Governor's Task Force, and Osceola County Master Plan.
- ✓ Orlando Utilities Commission is doing a study in the area regarding constructing a transmission line and would like to continue coordination.

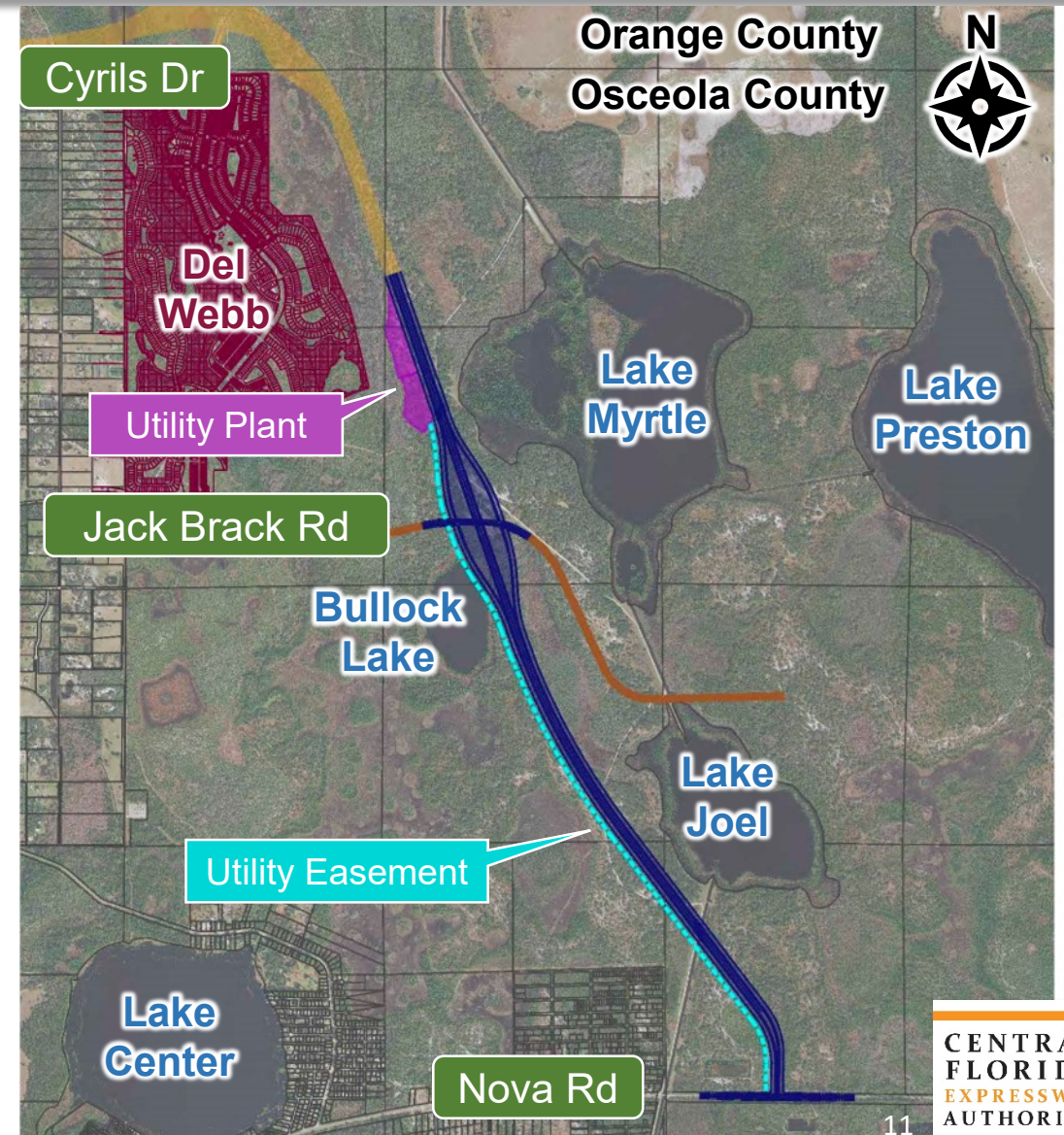


# Proposed Typical Section



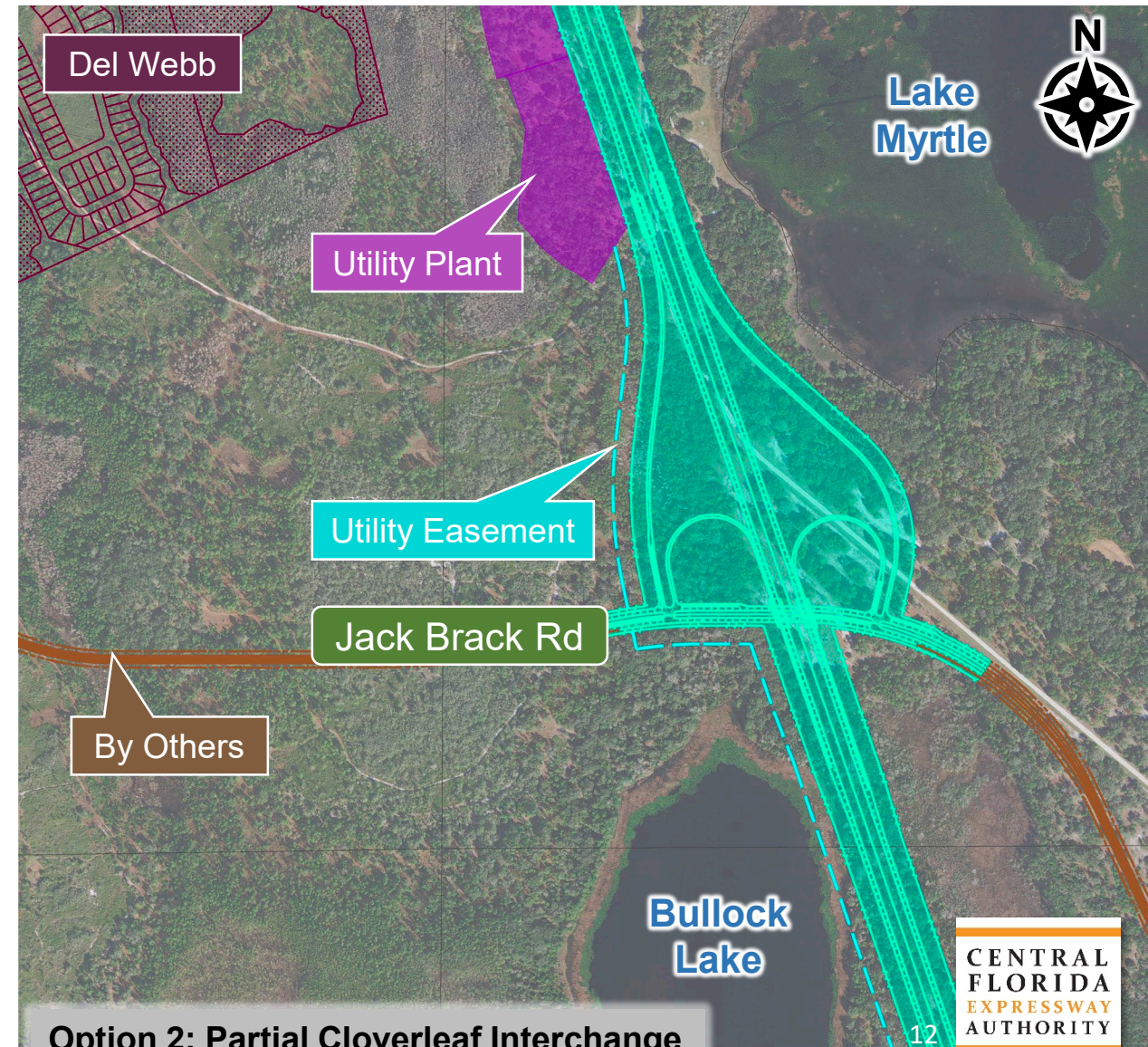
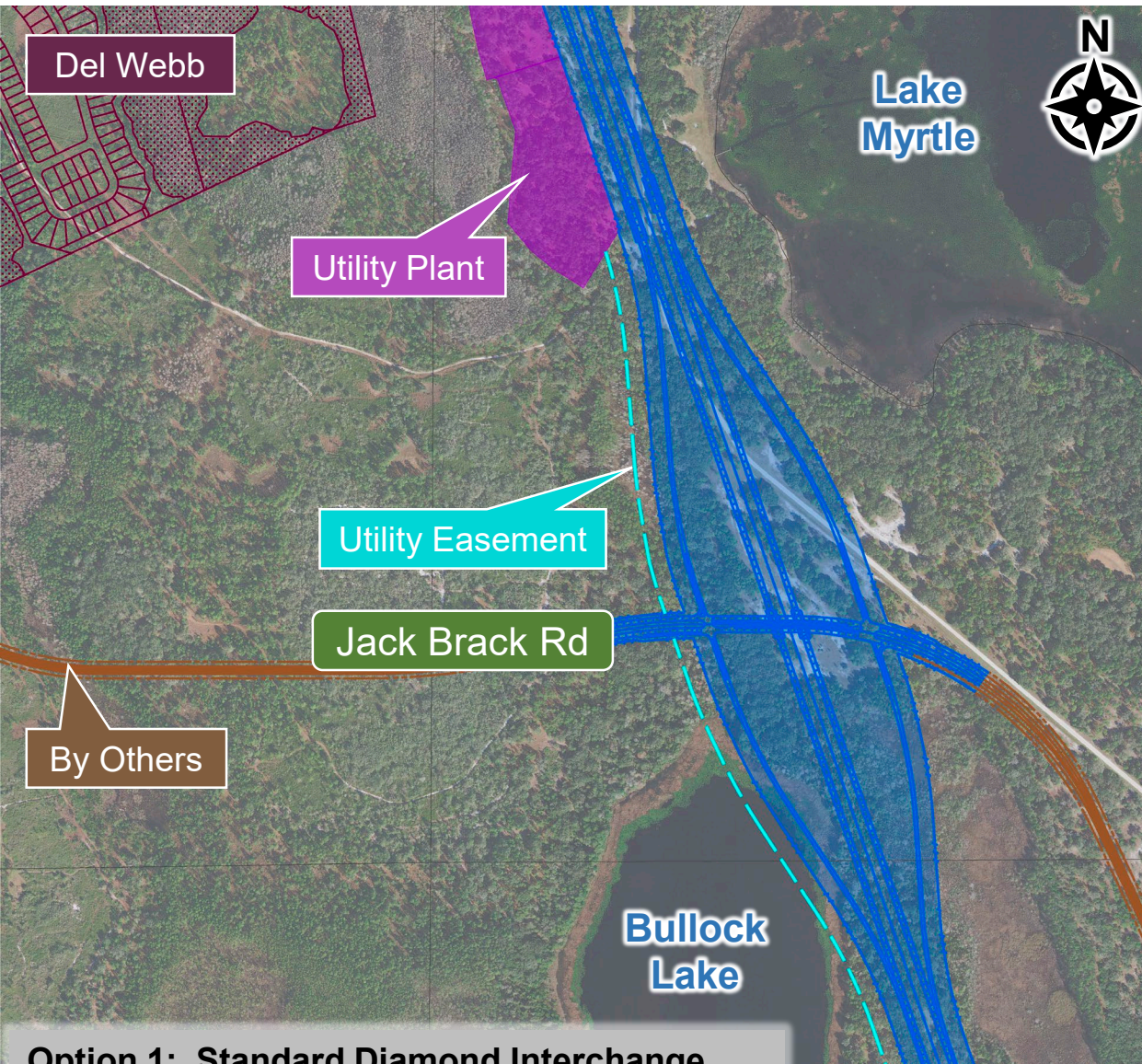
# Alternatives Development

- Alignment alternatives developed within Corridor A.
- Utility easement will run along the western alignment.
- Multiple interchange configurations are being evaluated at:
  - Jack Brack Road
  - Nova Road





# Jack Brack Road Interchange Options





# Evaluation Matrix – Option 1 vs. Option 2

## Jack Brack Road Interchange

Criteria	Diamond	Partial Cloverleaf
	<b>Design Elements</b>	
Segment Length	1.9	1.9
Proposed Number of Bridges	4	4
Proposed Bridge Length (feet)	751	774
	<b>Physical Impacts</b>	
Contamination Sites and Facilities	2	2
Railroad Involvement	None	None
	<b>Cultural Impacts</b>	
Potential Historic Resources	1	1
Potential Historic Linear Resources	0	0
Potential Archaeological Resources	0	0
	<b>Right-of-way Impacts (no ponds)</b>	
Right-of-way (acres)	122.7	115.3
Potential Residential Parcel Impacts	0	0
Potential Non-Residential Impacts	4	4

# Evaluation Matrix – Option 1 vs. Option 2

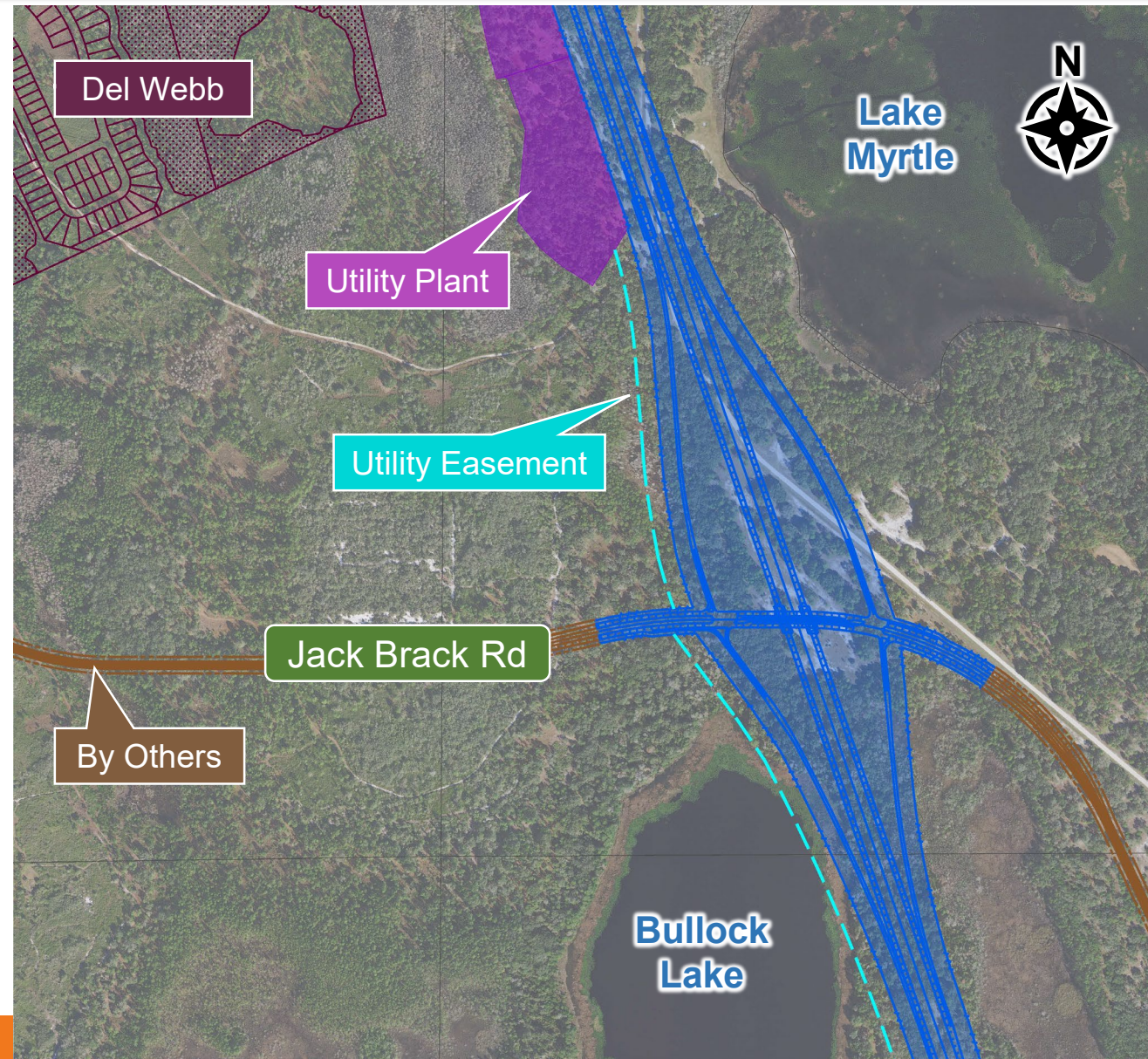
## Jack Brack Road Interchange

Criteria	Diamond	Partial Cloverleaf
	<b>Natural Environment</b>	
Number of Canal Crossings	0	0
100-year Floodplain (acres)	27.3	17.3
Wetlands (acres)	7.3	1.6
Surface Waters (acres)	1.8	0
Potential Species Impacts (composite rating)	Moderate	Moderate
Mitigation Properties	0	0
Conservation Easements	0	0
	<b>Socioeconomic Impacts</b>	
Community and Recreational Facilities / Trails	0	0
Socioeconomic Impacts to Special Populations	None	None
Community Cohesion Effects	None	None
	<b>Cost</b>	
Construction Cost (\$ millions)	\$58.2	\$61.2

# Jack Brack Road Interchange – Refined Option 1

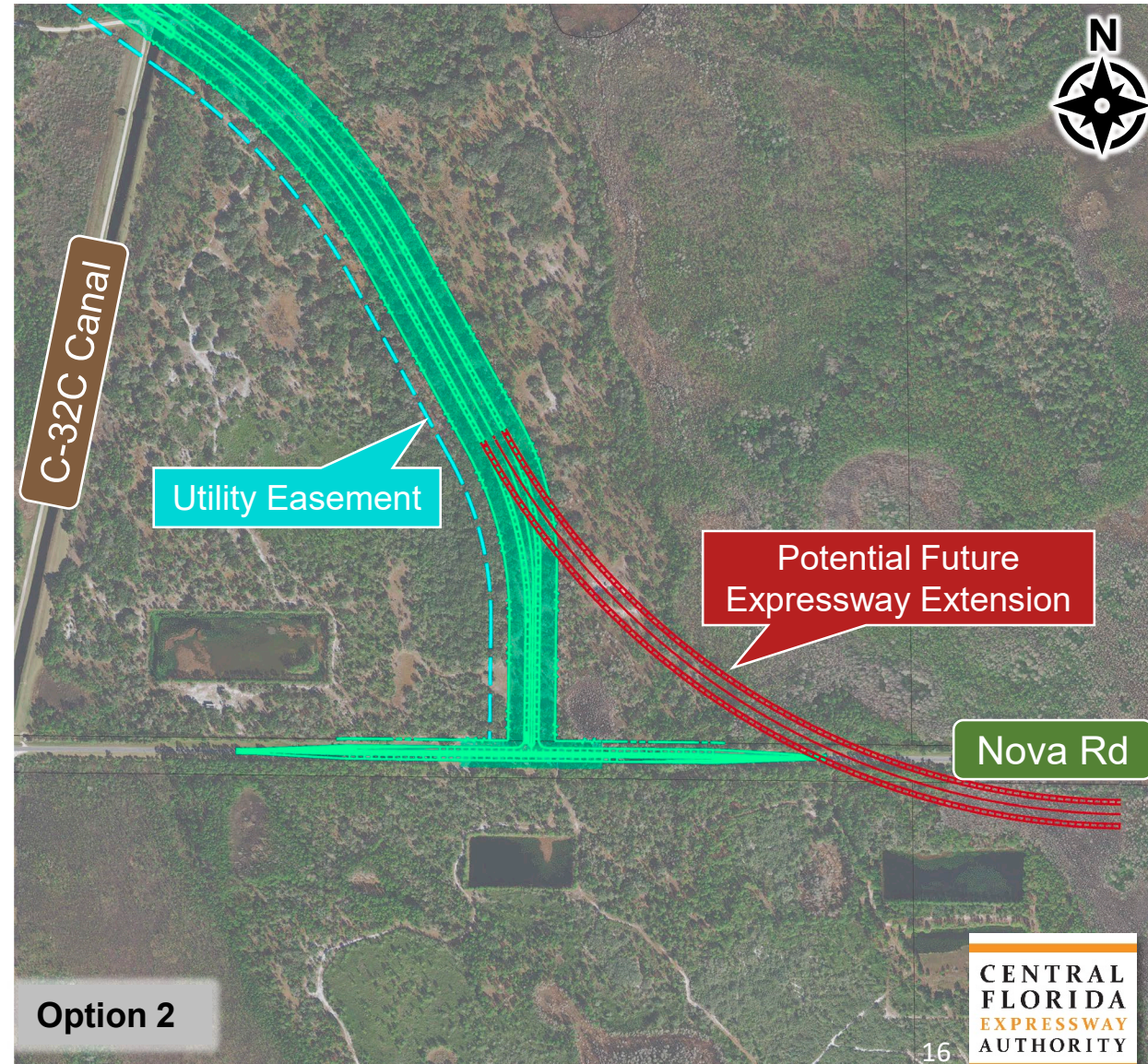
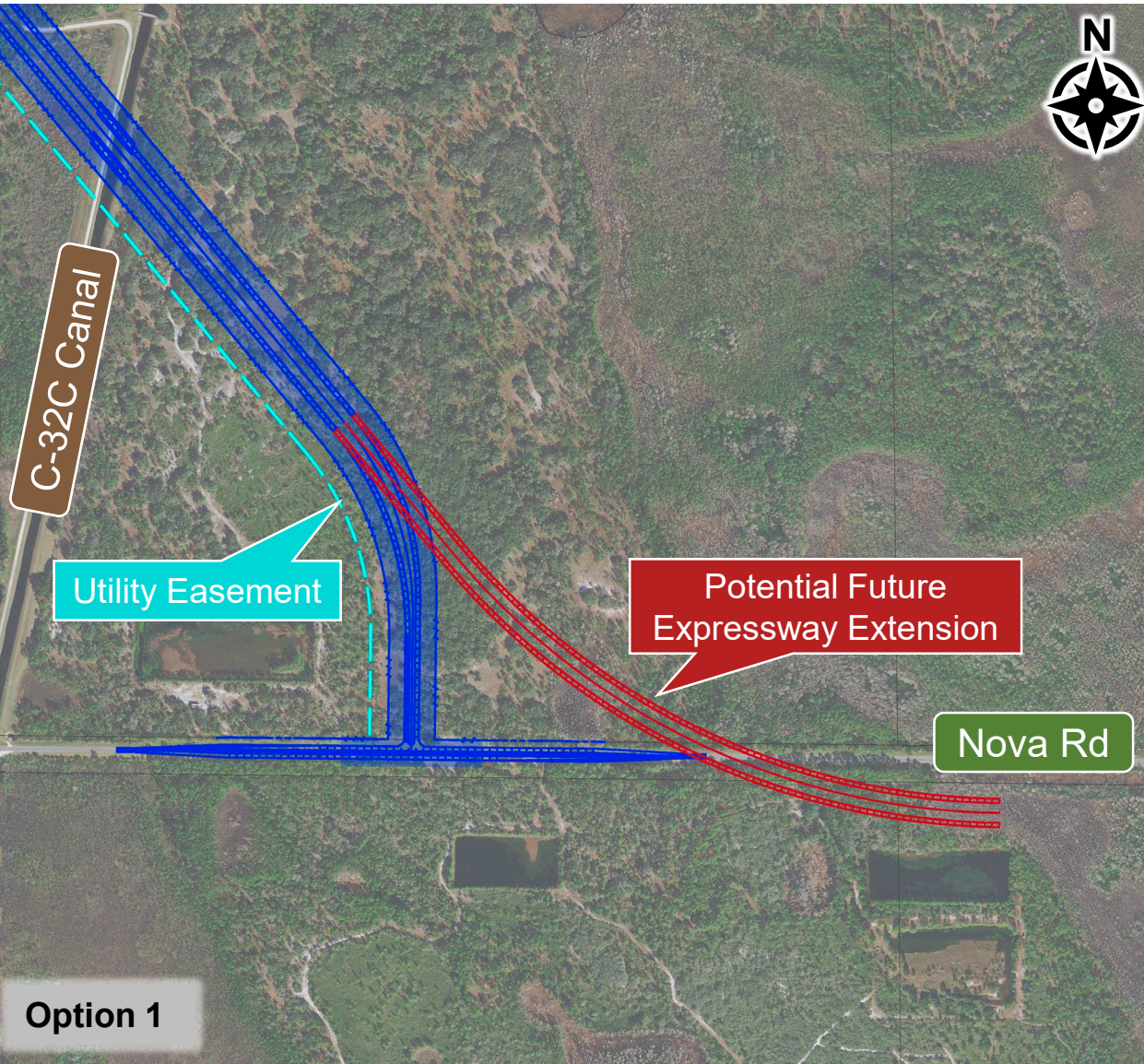
## Tighter Diamond

- Provides same traffic movements
- Minimizes impacts to:
  - Wetlands (3.5 acres)
  - Surface Waters (0.5 acres)
  - Floodplains (20.3 acres)
- Provides better alignment for planned transmission line





# Nova Road Connection Options





# Evaluation Matrix – Option 1 vs. Option 2

## Nova Road Connections

Criteria	Option 1	Option 2
	<b>Design Elements</b>	
Segment Length	1.7	1.8
Proposed Number of Bridges	4	4
Proposed Bridge Length (feet)	946	804
	<b>Physical Impacts</b>	
Contamination Sites and Facilities	0	0
Railroad Involvement	None	None
	<b>Cultural Impacts</b>	
Potential Historic Resources	0	1
Potential Historic Linear Resources	2	2
Potential Archaeological Resources	0	0
	<b>Right-of-way Impacts (no ponds)</b>	
Right-of-way (acres)	65.8	69.7
Potential Residential Parcel Impacts	0	0
Potential Non-Residential Impacts	3	3

# Evaluation Matrix – Option 1 vs. Option 2

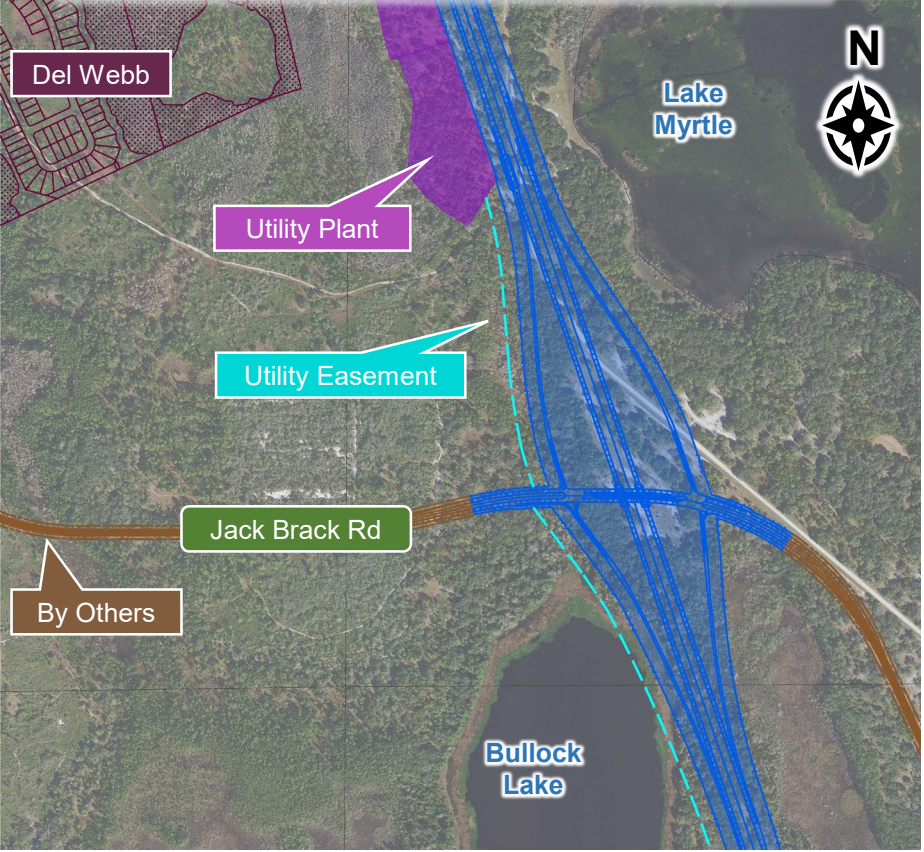
## Nova Road Connections

Criteria	Option 1	Option 2
	<b>Natural Environment</b>	
Number of Canal Crossings	1	1
100-year Floodplain (acres)	21.3	20.9
Wetlands (acres)	11.0	6.4
Surface Waters (acres)	0.6	0.5
Potential Species Impacts (composite rating)	Moderate	Moderate
Mitigation Properties	0	0
Conservation Easements	0	0
	<b>Socioeconomic Impacts</b>	
Community and Recreational Facilities / Trails	0	0
Socioeconomic Impacts to Special Populations	None	None
Community Cohesion Effects	None	None
	<b>Cost</b>	
Construction Cost (\$ millions)	\$46.3	\$50.2

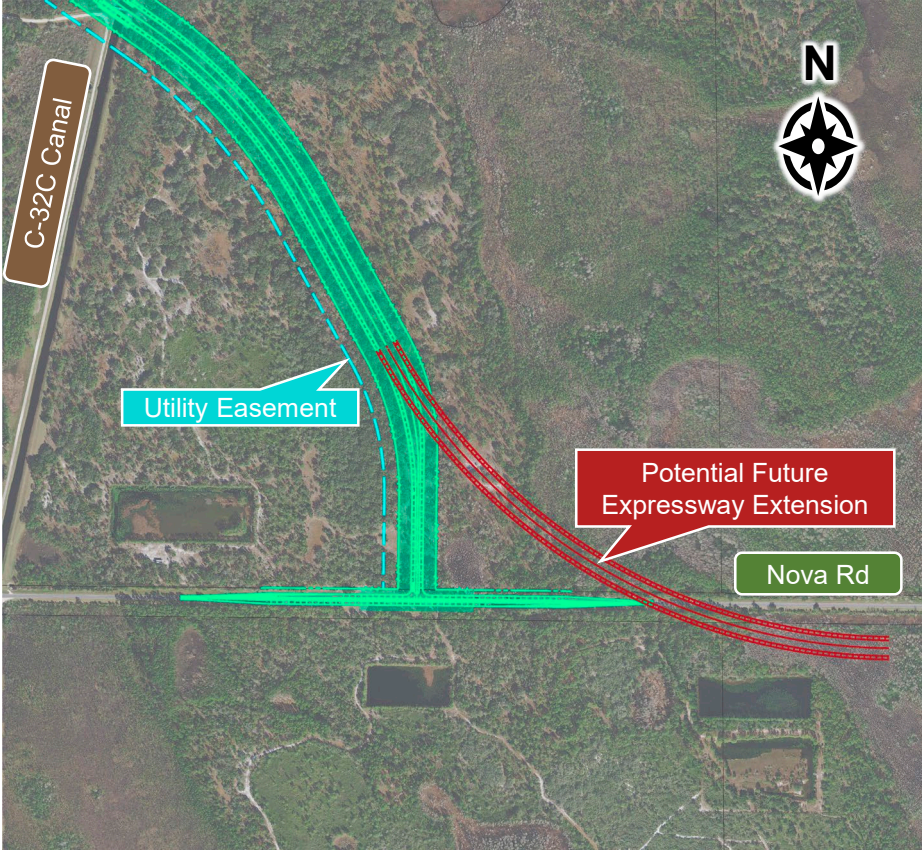


# Preferred Interchange and Connection Alternatives

Jack Brack Road Interchange - Refined Option 1: Tighter Diamond

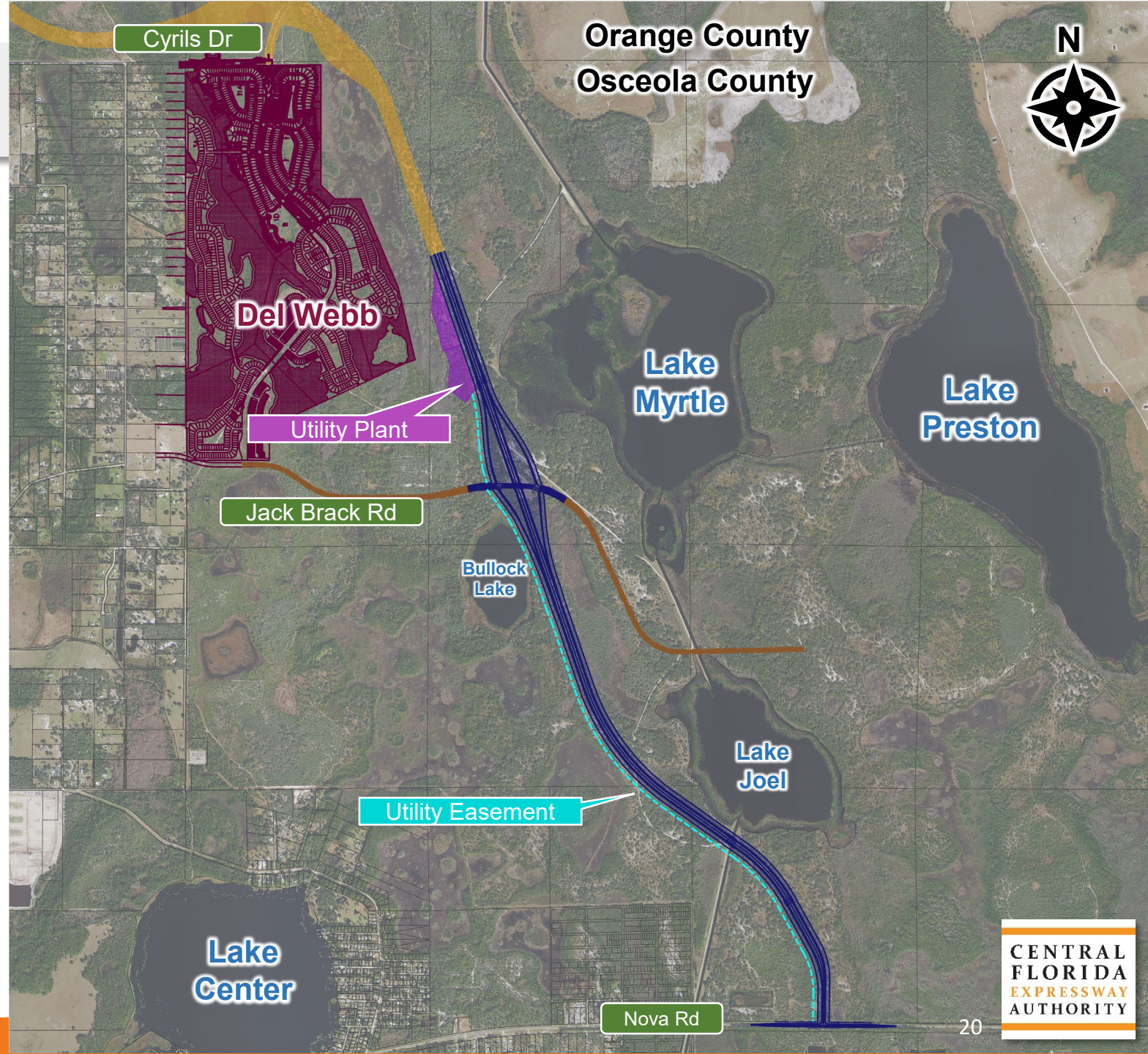


Nova Road Connection - Option 2





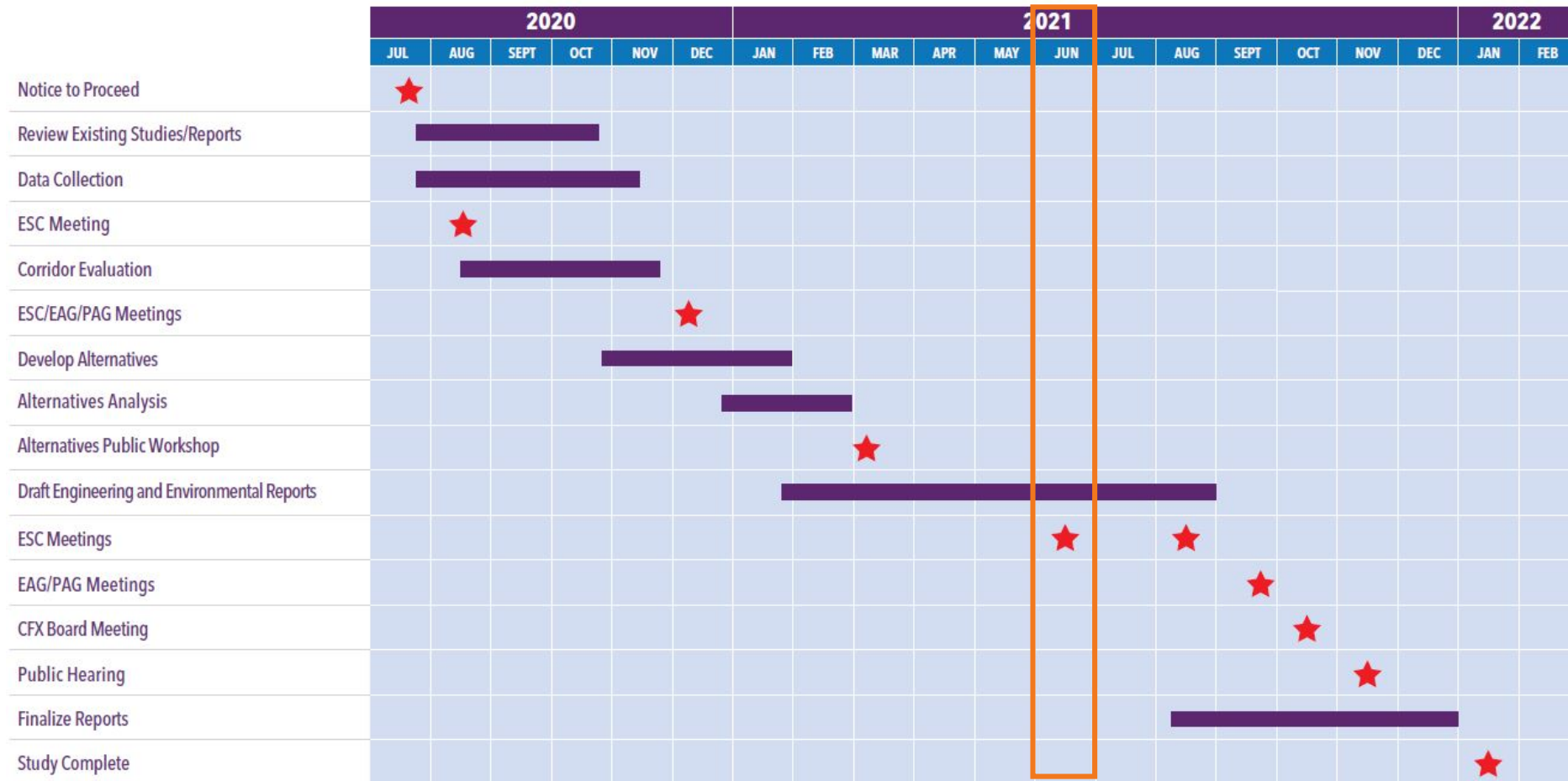
# Preferred Alternative





# Study Schedule (Subject to Change)

## Northeast Connector Expressway Phase 1 Study Schedule (Subject to Change)







CENTRAL  
FLORIDA  
EXPRESSWAY  
AUTHORITY

THANK YOU!

**D.3**  
**PROJECT**  
**PERMITTING**  
**UPDATE**





# State and Federal Permitting Updates

Nicole Gough  
Dewberry Engineers Inc.  
General Engineering Consultant

June 17, 2021

*Presented to:*

**CENTRAL  
FLORIDA  
EXPRESSWAY  
AUTHORITY**



# Permitting Process

Regulatory Agency jurisdiction is defined by authorizing legislation and interagency delegation agreements.

- Federal

- Section 404(g) of the Clean Water Act (CWA), 33 U.S.C. § 1344(g)
  - Dredge or Fill in Waters of The US (WOTUS)
  - Joint EPA administration
  - NMFS and USFWS Advisory Roles
- Section 10 Rivers and Harbors Act
- Tribal Lands

- State

- Section 373 Florida Statutes
  - Permitting Responsibility
- Chapter 62-113 F.A.C (Delegations)
- Chapter 62-330 F.A.C.
  - (Statewide ERP) process for ERP

# Regulatory Updates

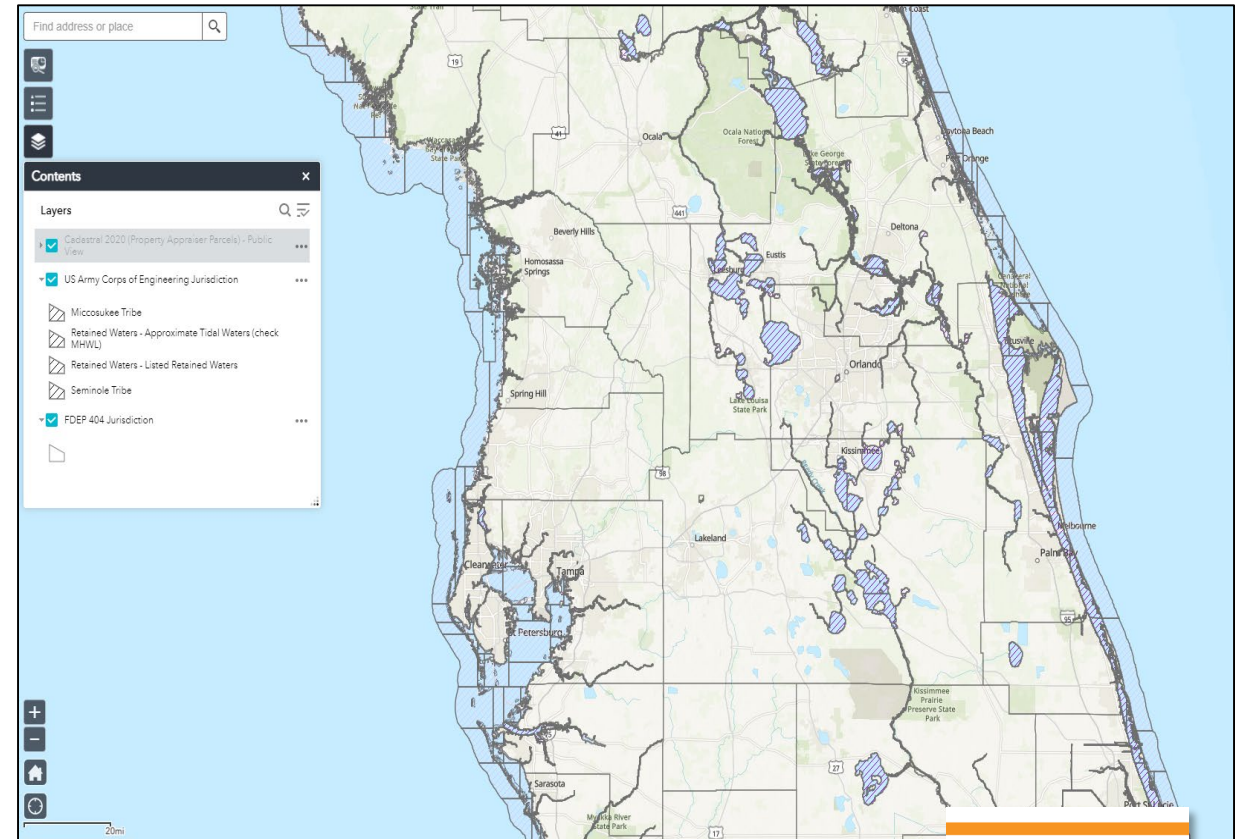
- FDEP and WMD undergo frequent Rulemaking
  - Updates to A.H. and forms
  - Regulatory Plan updates focus on Water Quality and Water Supply
  - Some delegation agreement refinements to align with program changes and technology
    - Updates to Interagency regulatory processing
    - Example:
      - As of October 1, 2017, Applicants must apply directly to the Corps using the Corps application Form ENG 4345



# State 404 Assumption - *December 22, 2020*

## Section 373.4146 F.S.

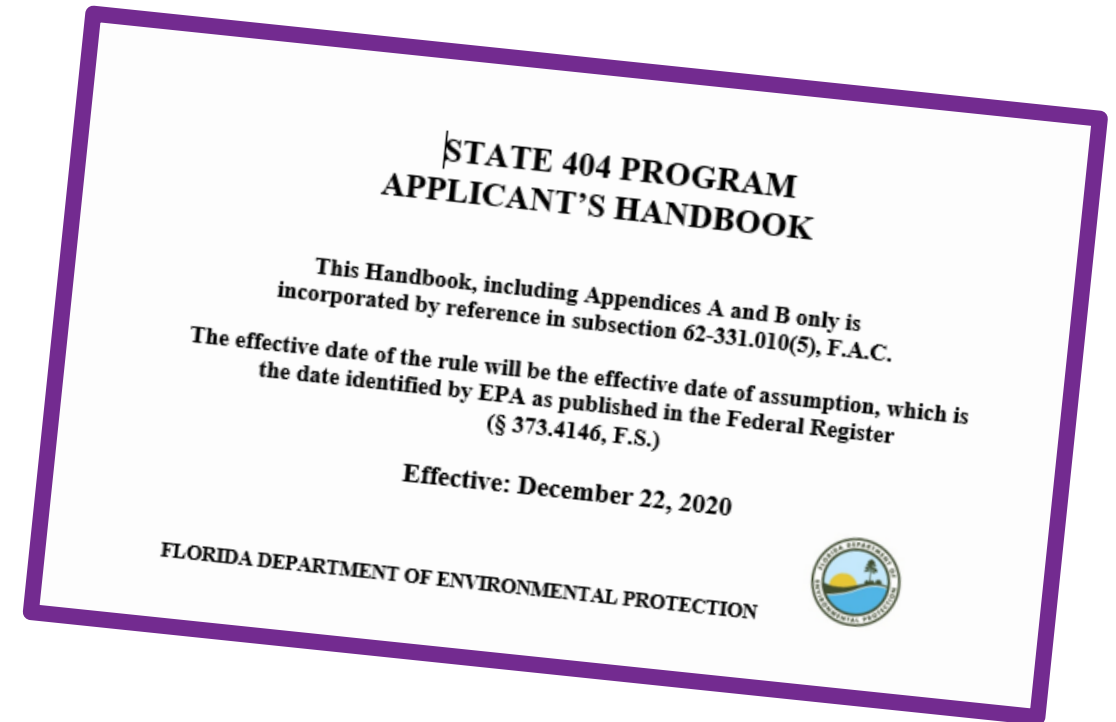
- Authorizes the State to assume Section 404 CWA program
  - State assumes jurisdiction of all “Assumed Waters”
  - USACE retained jurisdiction of “Retained Waters”, Section 10 waters and Tribal Lands





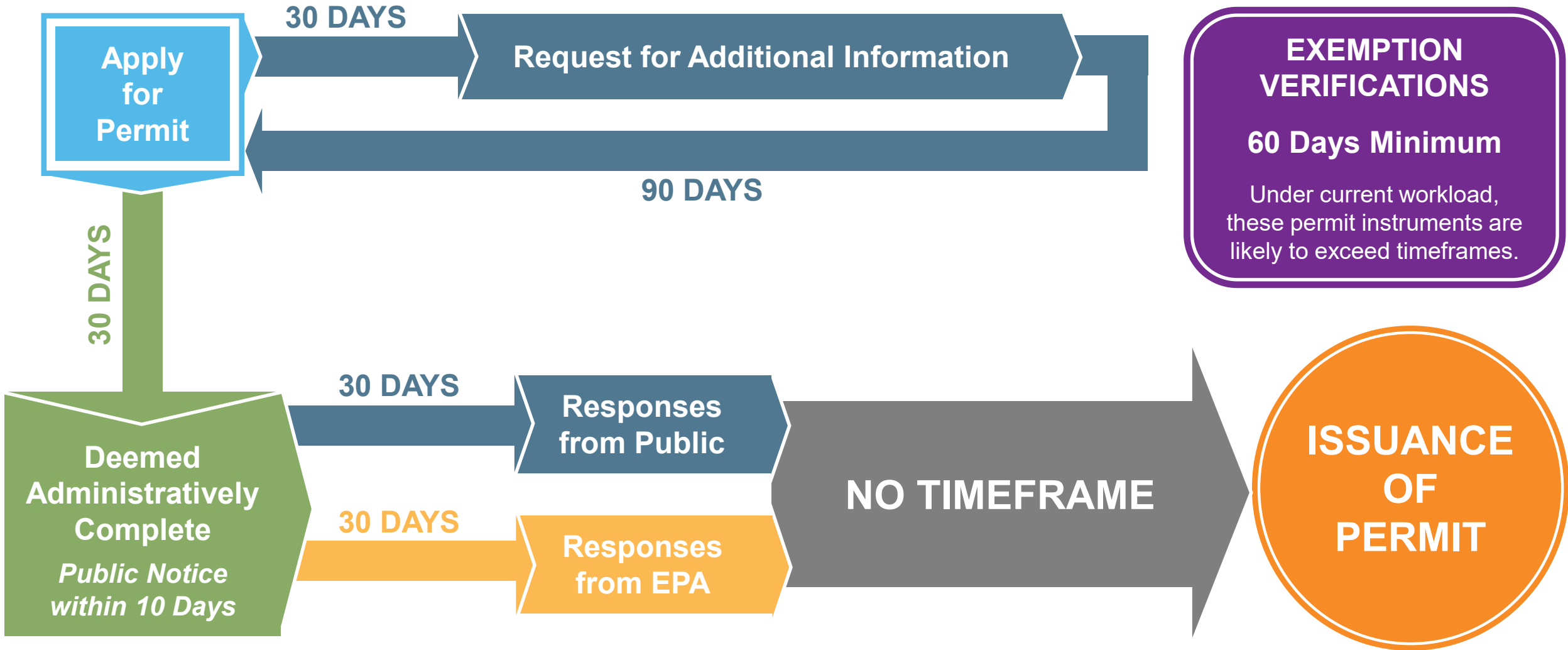
# Basics of Assumed 404

- No Fees for 404 Review or Applications
- Applications are on a Joint Application Form and forwarded by the WMD to the FDEP for 404 review
- Permits are issued for 5 year durations only
  - Requires phasing of longer-range projects
- 404 General Permits take on the role of USACE
  - Nationwide Permits
  - Regional General Permits
  - Statewide Programmatic General Permits
- State FWC provides initial review on species concerns
  - USFWS can be consulted by FWC during review
  - USFWS has opportunity to comment during Public Notice (PN)



# Timeframes

The default issuance provisions in Chapter 120, F.S., do not apply to the State 404 Program because permits under Section 404 of the Clean Water Act cannot be issued by default.



# Wetland and Surface Waters

- Under 62-331
  - The State asserts all waters are “jurisdictional”

FDEP considers “any wetlands or other surface waters delineated in accordance with Chapter 62-340, F.A.C., that are regulated under Part IV of Chapter 373, F.S., could be considered Waters of the United States (WOTUS), and will treat them as if they are, unless the applicant clearly demonstrates otherwise.”





# CHALLENGES



# Evolving Solutions

- Stay in communication with reviewers
- Keep abreast of policy changes within the agencies
- When appropriate, assist in providing data, forms and documents
- Coordinate between agencies to ensure all information is available to reviewers
- Early technical assistance with FWC and USFWS
- Coordinate with the FDEP 404 leadership in the State and local offices
- Adapt application reports and documents to 404 Handbook compliance

