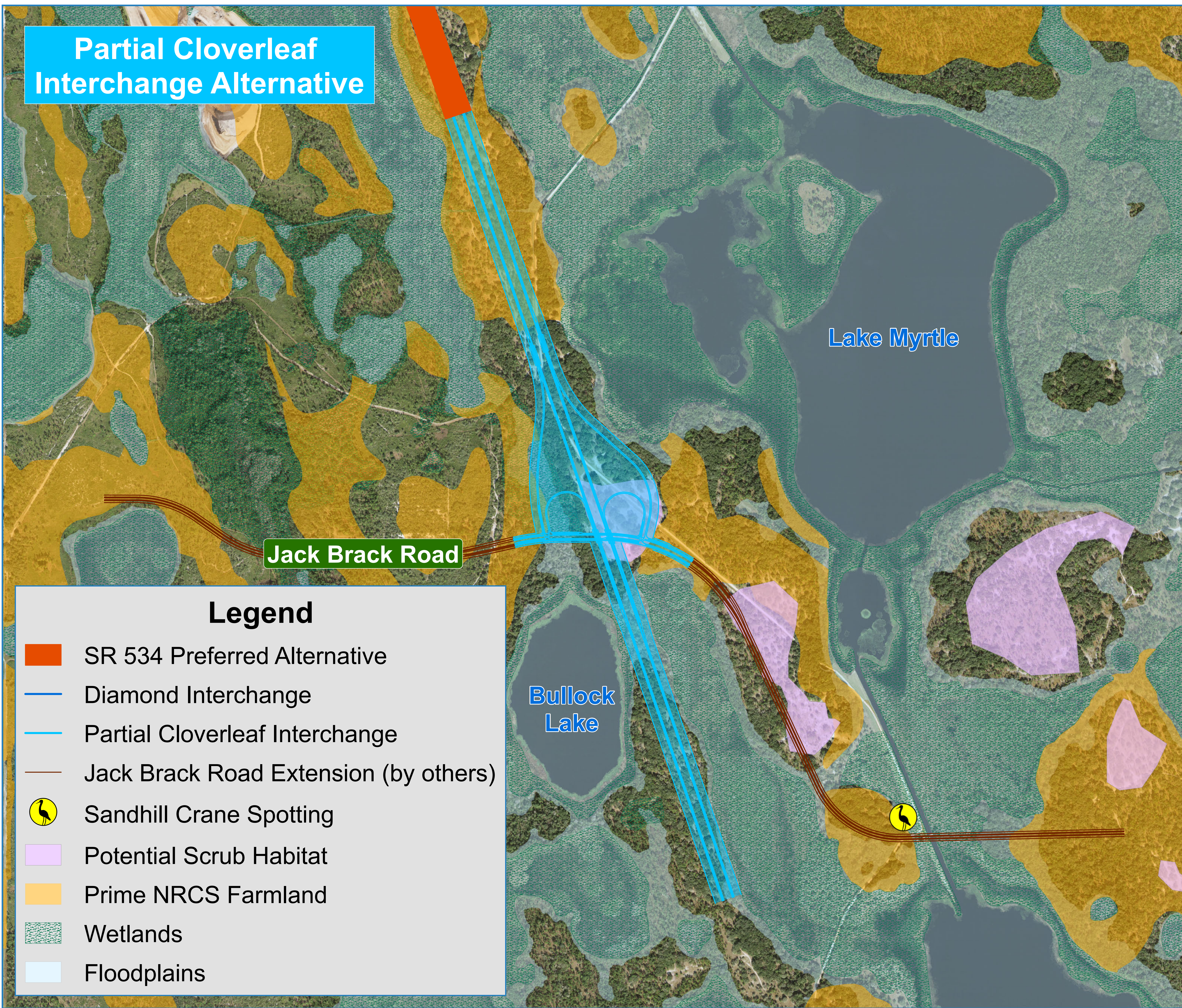


**Diamond
Interchange Alternative**

**Partial Cloverleaf
Interchange Alternative**



Legend

- SR 534 Preferred Alternative
- Diamond Interchange
- Partial Cloverleaf Interchange
- Jack Brack Road Extension (by others)
- Sandhill Crane Spotting
- Potential Scrub Habitat
- Prime NRCS Farmland
- Wetlands
- Floodplains