



# CAPACITY IMPROVEMENTS PROJECT

## CR 532/OSCEOLA POLK LINE ROAD

### SPRING 2025

- (407) 505-5594
- Construction@CFXway.com
- www.CFXway.com
- @CFXway

## PROJECT DESCRIPTION

In August 2021, the Central Florida Expressway Authority (CFX), in partnership with Osceola County, began the design of the proposed capacity improvements of County Road 532/Osceola Polk Line Road from Lake Wilson Road to US 17/92. This is being done in conjunction with the planned extension of Poinciana Parkway from its northern end at Ronald Reagan Parkway to CR 532 in Osceola County.

The proposed 3-mile project would improve roadway connections between the extension of Poinciana Parkway and I-4 via CR 532/Osceola Polk Line Road.

## PUBLIC INVOLVEMENT

CFX held a public information meeting on January 18, 2023, and encourages the public to email feedback to [Construction@CFXway.com](mailto:Construction@CFXway.com).

Visit the Project Webpage at:  
<https://shorturl.at/aZpl2>

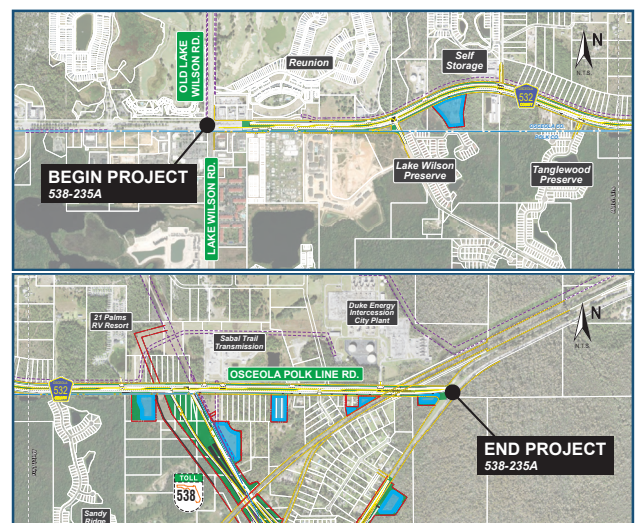
## QUICK FACTS

- Construction Timeline:**  
Early 2026 - 2027
- Estimated Construction Cost:**  
\$48.6 Million

## PROJECT GOALS

- Reducing congestion and delays on local roads.
- Enhancing mobility of the area's growing population and economy by providing additional transportation infrastructure.
- Providing consistency with local plans and policies.
- Enhancing safety.
- Promoting regional connectivity.

## PROJECT MAP (LARGER MAP ON BACK)



The Central Florida Expressway Authority (CFX) is an independent agency of the State of Florida that operates and maintains a regional network of expressways for 3 million residents of Brevard, Lake, Orange, Osceola, and Seminole counties and more than 75 million annual visitors to Central Florida. CFX's 125-centerline mile, user-funded system includes 73 interchanges, 14 mainline toll plazas, 5 mainline gantries, 76 ramp toll plazas and 369 bridges. On average, more than 1.6 million toll transactions are recorded daily, nearly 98 percent of them electronically. CFX operates E-PASS, the first electronic toll collection system in Florida, with more than one million E-PASS accounts. For more information, visit [CFXway.com](http://CFXway.com).



# CAPACITY IMPROVEMENTS PROJECT

## CR 532/OSCEOLA POLK LINE ROAD



### PROJECT MAP

