



SR 538/POINCIANA PARKWAY EXTENSION: SEGMENTS 1 & 2

RONALD REAGAN PARKWAY TO COUNTY ROAD 532

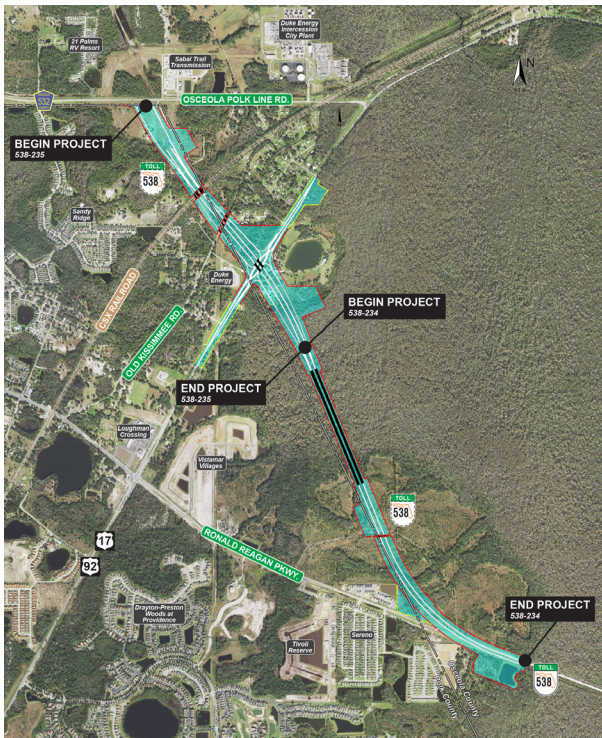
WINTER 2022

DESIGN DESCRIPTION

The Central Florida Expressway Authority is designing the extension of State Road 538/Poinciana Parkway. The extension is being designed in two segments. Segment 1, from Ronald Reagan Parkway to south of US 17/92 and Segment 2, from south of US 17/92 to County Road 532 are expected to improve traffic flow and operations in the area.

The 3.1-mile project extends the Poinciana Parkway from Ronald Reagan Parkway to CR 532 and includes nearly a half mile of bridging over wetlands within the Reedy Creek Mitigation Bank. Design also includes an interchange at US 17/92, tolled ramps at CR 532, and bridges over the CSX railroad, Old Tampa Highway, and US 17/92. A noise analysis has been performed as part of this project.

DESIGN MAP (LARGER MAP ON BACK)



ABOUT PUBLIC INVOLVEMENT

CFX is holding a public information meeting on January 17, 2023 and anticipates a pre-construction meeting prior to the start of construction.

DESIGN GOALS

- Improve connectivity opportunities for Osceola and Polk counties.
- Meet anticipated transportation demand for planned growth.
- Provide evacuation and emergency services access for emergency events such as hurricanes.

QUICK FACTS

Design Timeline:
July 2020 - Early 2023

Estimated Design Cost:
\$11.1 Million

For more information:

786-859-1826

www.CFXway.com

Construction@CFXway.com

[@DriveEPASS](https://twitter.com/DriveEPASS)

CENTRAL
FLORIDA
EXPRESSWAY
AUTHORITY



The Central Florida Expressway Authority (CFX) is an independent agency of the State of Florida that operates and maintains a regional network of expressways for 3.3 million residents of Brevard, Lake, Orange, Osceola, and Seminole counties and more than 75 million annual visitors to Central Florida. CFX's 125-centerline mile, user-funded system which includes 73 interchanges, 14 mainline toll plazas, 5 mainline gantries, 76 ramp toll plazas and 343 bridges. On average, more than 1.3 million toll transactions are recorded daily, over 95 percent of them electronically. CFX operates E-PASS, the first electronic toll collection system in Florida, with more than 800,000 E-PASS accounts. For more information, visit CFXway.com.

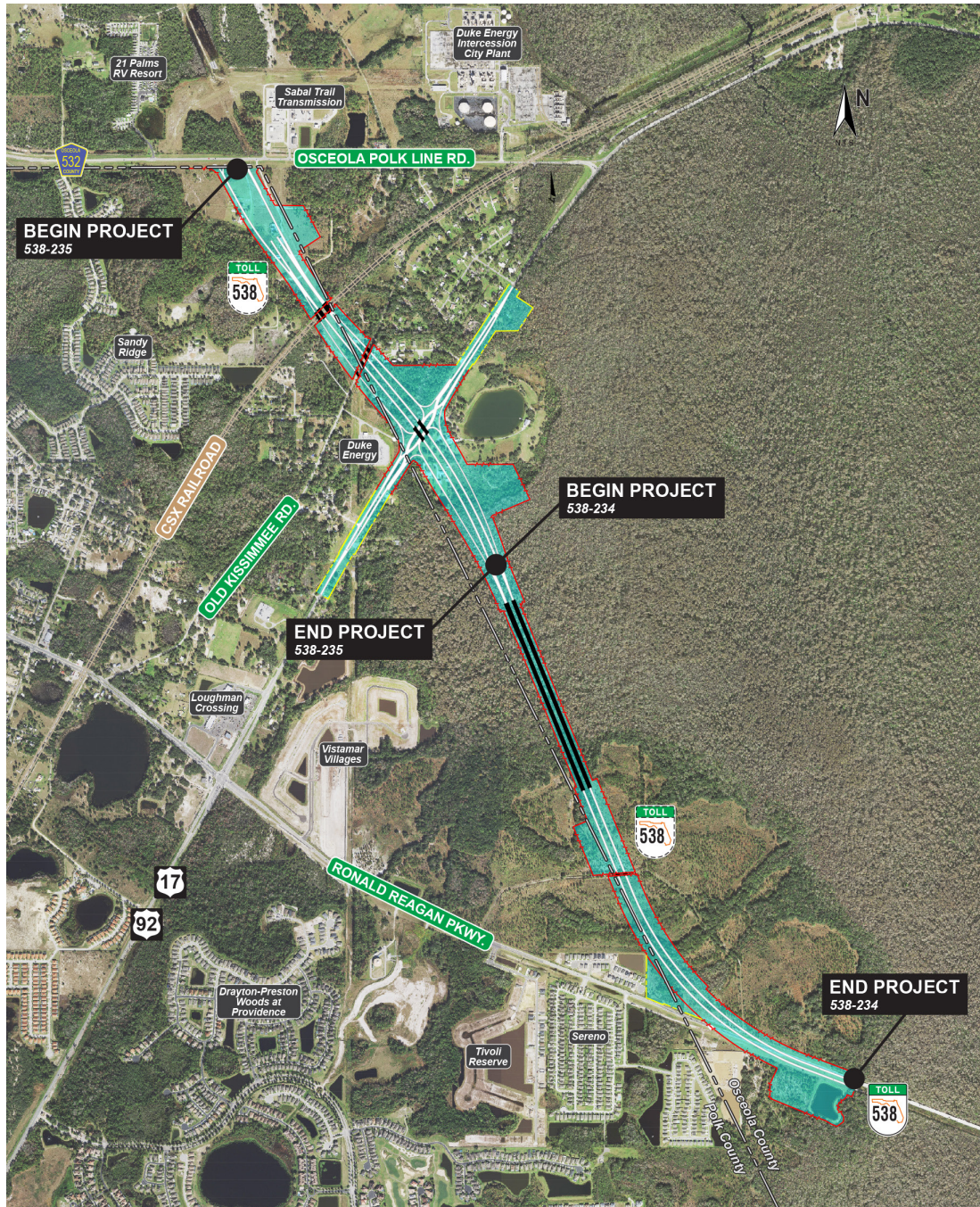
Central Florida Expressway Authority: 4974 ORL Tower Road, Orlando, FL 32807
Phone: 407.690.5000 | Fax: 407.690.5011 | Email: Info@CFXWay.com



SR 538/POINCIANA PARKWAY EXTENSION: SEGMENTS 1 & 2

RONALD REAGAN PARKWAY TO COUNTY ROAD 532

WINTER 2022



CENTRAL
FLORIDA
EXPRESSWAY
AUTHORITY



Public participation is solicited without regard to race, color, national origin, age, sex, religion, disability or family status. Para más información en español acerca del proyecto, por favor comuníquese con Kevin Camara al 786-859-1826 o por correo electrónico a Kevin.Camara@QCAusa.com.