

CENTRAL FLORIDA EXPRESSWAY AUTHORITY (CFX)

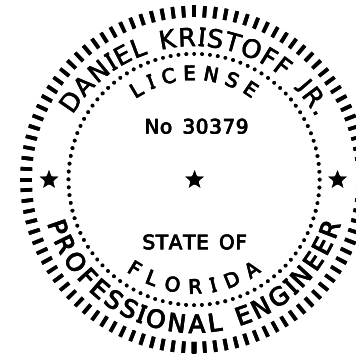
TYPICAL SECTION PACKAGE

OSCEOLA COUNTY

STATE ROAD NO. N/A

Northeast Connector Expressway (SR 534) - Phase 1
From Cyrils Drive to Nova Road (CR 532)

CFX PROJECT NO. 599-228

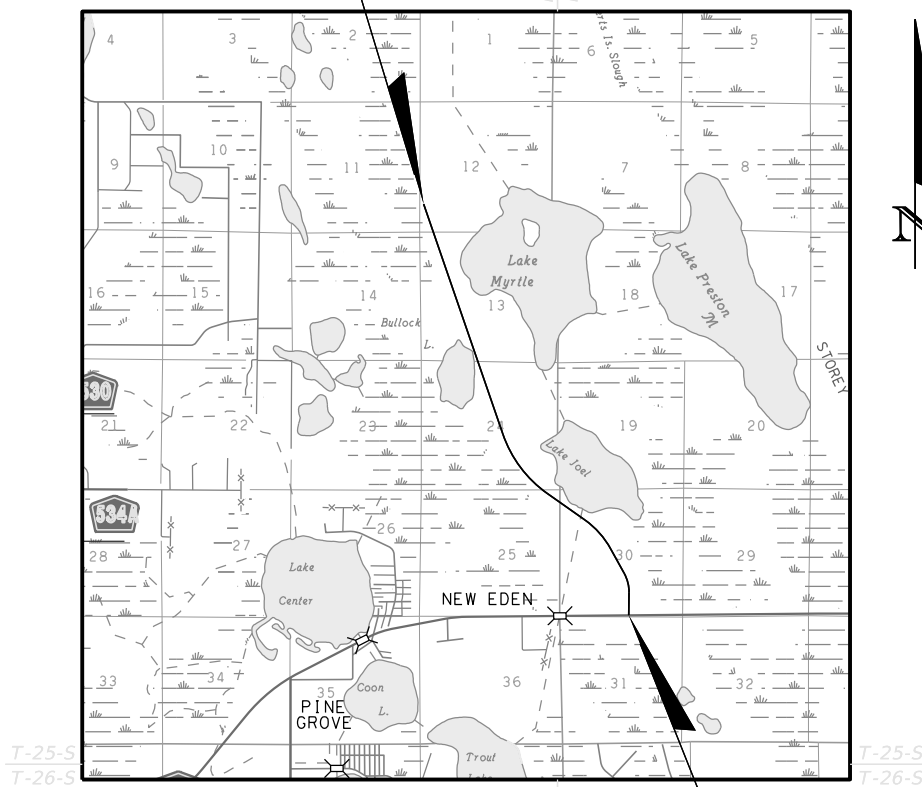


THIS ITEM HAS BEEN DIGITALLY
SIGNED AND SEALED BY:

ON THE DATE ADJACENT TO THE SEAL
PRINTED COPIES OF THIS DOCUMENT ARE
NOT CONSIDERED SIGNED AND SEALED.
THE SIGNATURE MUST BE VERIFIED
ON ANY ELECTRONIC COPIES.

RS&H, INC.
10748 DEERWOOD PARK BLVD SOUTH
JACKSONVILLE, FL 32256
CERTIFICATE OF AUTHORIZATION: 5620
DANIEL KRISTOFF, JR, P.E. NO. 30379

BEGIN PROJECT
STA. 753+56.04



END PROJECT
STA. 949+24.15

THE ABOVE NAMED PROFESSIONAL ENGINEER SHALL BE RESPONSIBLE FOR THE
FOLLOWING SHEETS IN ACCORDANCE WITH RULE 61G15-23.004, F.A.C.

TYPICAL SECTION PACKAGE

SHEET NO.	SHEET DESCRIPTION
1	COVER SHEET
2	NORTHEAST CONNECTOR EXPRESSWAY (SR 534) (ROADWAY) - INTERIM RURAL MEDIAN
3	NORTHEAST CONNECTOR EXPRESSWAY (SR 534) (ROADWAY) - ULTIMATE RURAL MEDIAN
4	NORTHEAST CONNECTOR EXPRESSWAY (SR 534) (ROADWAY) - CURBED MEDIAN
5	NORTHEAST CONNECTOR EXPRESSWAY (SR 534) (BRIDGE)
6	SINGLE LANE RAMP (ROADWAY) - JACK BRACK INTERCHANGE
7	JACK BRACK ROAD
8	NOVA ROAD (CR 532)

SHEET
NO.

1

PROJECT CONTROLS

CONTEXT CLASSIFICATION

- () C1 : NATURAL () C3C : SUBURBAN COMM.
- () C2 : RURAL () C4 : URBAN GENERAL
- () C2T : RURAL TOWN () C5 : URBAN CENTER
- () C3R : SUBURBAN RES. () C6 : URBAN CORE
- (X) N/A : L.A. FACILITY

FUNCTIONAL CLASSIFICATION

- () INTERSTATE () MAJOR COLLECTOR
- (X) FREEWAY/EXPWY. () MINOR COLLECTOR
- () PRINCIPAL ARTERIAL () LOCAL
- () MINOR ARTERIAL

HIGHWAY SYSTEM

- () NATIONAL HIGHWAY SYSTEM
- () STRATEGIC INTERMODAL SYSTEM
- (X) STATE HIGHWAY SYSTEM
- () OFF-STATE HIGHWAY SYSTEM

ACCESS CLASSIFICATION

- (X) 1 - FREEWAY
- () 2 - RESTRICTIVE w/Service Roads
- () 3 - RESTRICTIVE w/660 ft. Connection Spacing
- () 4 - NON-RESTRICTIVE w/2640 ft. Signal Spacing
- () 5 - RESTRICTIVE w/440 ft. Connection Spacing
- () 6 - NON-RESTRICTIVE w/1320 ft. Signal Spacing
- () 7 - BOTH MEDIAN TYPES
- () N/A

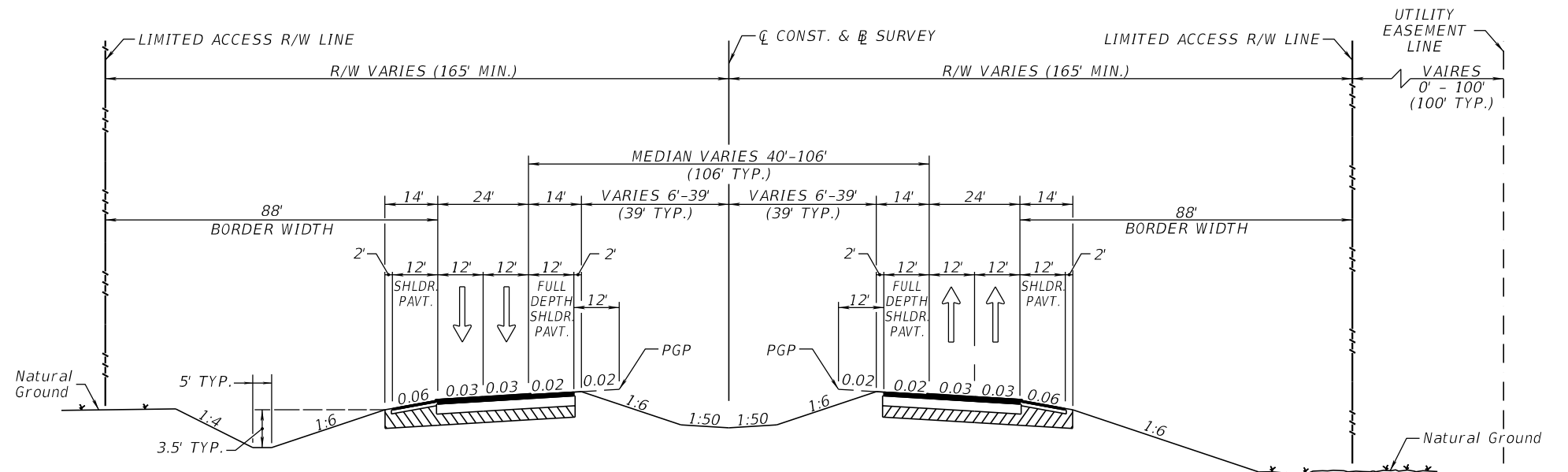
CRITERIA

- (X) NEW CONSTRUCTION / RECONSTRUCTION
- () RESURFACING (LA FACILITIES)
- () RRR (ARTERIALS & COLLECTORS)

POTENTIAL EXCEPTIONS AND VARIATIONS RELATED TO TYPICAL SECTION:

1. BORDER WIDTH

TYPICAL SECTION No. 1



**INTERIM TYPICAL SECTION
NORTHEAST CONNECTOR EXTENSION (SR 534)**

STA. 753+56.04 TO STA. 939+70.66

**TRAFFIC DATA
STA. 753+56.04 TO STA. 807+53.43**

CURRENT YEAR = 2020 AADT = N/A
 ESTIMATED OPENING YEAR = 2025 AADT = 19,800
 ESTIMATED DESIGN YEAR = 2045 AADT = 35,900
 K = 11% D = 60% T = 4% (24 HOUR)
 DESIGN SPEED = 70 MPH
 POSTED SPEED = 70 MPH

**TRAFFIC DATA
STA. 807+53.43 TO STA. 939+70.66**

CURRENT YEAR = 2020 AADT = N/A
 ESTIMATED OPENING YEAR = 2025 AADT = 5,800
 ESTIMATED DESIGN YEAR = 2045 AADT = 19,000
 K = 11% D = 60% T = 4% (24 HOUR)
 DESIGN SPEED = 70 MPH
 POSTED SPEED = 70 MPH

SHEET NO.

2

PROJECT CONTROLS

CONTEXT CLASSIFICATION

- () C1 : NATURAL () C3C : SUBURBAN COMM.
- () C2 : RURAL () C4 : URBAN GENERAL
- () C2T : RURAL TOWN () C5 : URBAN CENTER
- () C3R : SUBURBAN RES. () C6 : URBAN CORE
- (X) N/A : L.A. FACILITY

FUNCTIONAL CLASSIFICATION

- () INTERSTATE () MAJOR COLLECTOR
- (X) FREEWAY/EXPWY. () MINOR COLLECTOR
- () PRINCIPAL ARTERIAL () LOCAL
- () MINOR ARTERIAL

HIGHWAY SYSTEM

- () NATIONAL HIGHWAY SYSTEM
- () STRATEGIC INTERMODAL SYSTEM
- (X) STATE HIGHWAY SYSTEM
- () OFF-STATE HIGHWAY SYSTEM

ACCESS CLASSIFICATION

- (X) 1 - FREEWAY
- () 2 - RESTRICTIVE w/Service Roads
- () 3 - RESTRICTIVE w/660 ft. Connection Spacing
- () 4 - NON-RESTRICTIVE w/2640 ft. Signal Spacing
- () 5 - RESTRICTIVE w/440 ft. Connection Spacing
- () 6 - NON-RESTRICTIVE w/1320 ft. Signal Spacing
- () 7 - BOTH MEDIAN TYPES
- () N/A

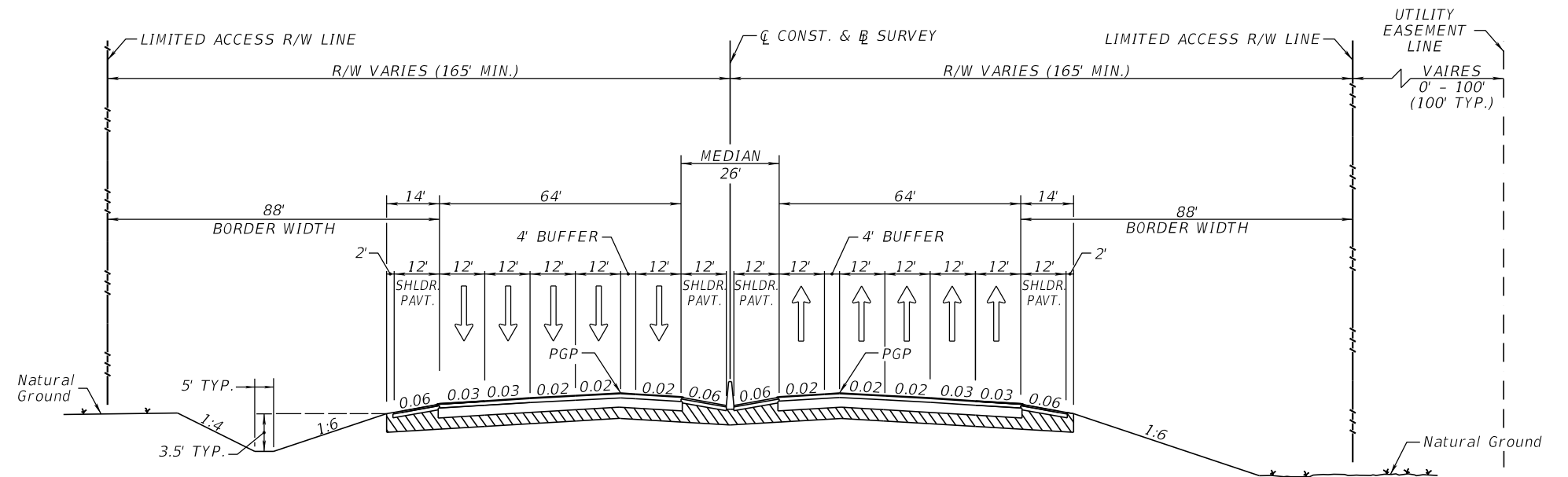
CRITERIA

- (X) NEW CONSTRUCTION / RECONSTRUCTION
- () RESURFACING (LA FACILITIES)
- () RRR (ARTERIALS & COLLECTORS)

POTENTIAL EXCEPTIONS AND VARIATIONS RELATED TO TYPICAL SECTION:

1. BORDER WIDTH

TYPICAL SECTION No. 2



**ULTIMATE TYPICAL SECTION
NORTHEAST CONNECTOR EXTENSION (SR 534)**

STA. 753+56.04 TO STA. 939+70.66

**TRAFFIC DATA
STA. 753+56.04 TO STA. 807+53.43**

CURRENT YEAR = 2020 AADT = N/A
 ESTIMATED OPENING YEAR = 2025 AADT = 19,800
 ESTIMATED DESIGN YEAR = 2045 AADT = 35,900
 K = 11% D = 60% T = 4 % (24 HOUR)
 DESIGN SPEED = 70 MPH
 POSTED SPEED = 70 MPH

**TRAFFIC DATA
STA. 807+53.43 TO STA. 939+70.66**

CURRENT YEAR = 2020 AADT = N/A
 ESTIMATED OPENING YEAR = 2025 AADT = 5,800
 ESTIMATED DESIGN YEAR = 2045 AADT = 19,000
 K = 11% D = 60% T = 4 % (24 HOUR)
 DESIGN SPEED = 70 MPH
 POSTED SPEED = 70 MPH

SHEET NO.

3

PROJECT CONTROLS

CONTEXT CLASSIFICATION

- () C1 : NATURAL () C3C : SUBURBAN COMM.
- () C2 : RURAL () C4 : URBAN GENERAL
- () C2T : RURAL TOWN () C5 : URBAN CENTER
- () C3R : SUBURBAN RES. () C6 : URBAN CORE
- (X) N/A : L.A. FACILITY

FUNCTIONAL CLASSIFICATION

- () INTERSTATE () MAJOR COLLECTOR
- (X) FREEWAY/EXPWY. () MINOR COLLECTOR
- () PRINCIPAL ARTERIAL () LOCAL
- () MINOR ARTERIAL

HIGHWAY SYSTEM

- () NATIONAL HIGHWAY SYSTEM
- () STRATEGIC INTERMODAL SYSTEM
- (X) STATE HIGHWAY SYSTEM
- () OFF-STATE HIGHWAY SYSTEM

ACCESS CLASSIFICATION

- (X) 1 - FREEWAY
- () 2 - RESTRICTIVE w/Service Roads
- () 3 - RESTRICTIVE w/660 ft. Connection Spacing
- () 4 - NON-RESTRICTIVE w/2640 ft. Signal Spacing
- () 5 - RESTRICTIVE w/440 ft. Connection Spacing
- () 6 - NON-RESTRICTIVE w/1320 ft. Signal Spacing
- () 7 - BOTH MEDIAN TYPES
- () N/A

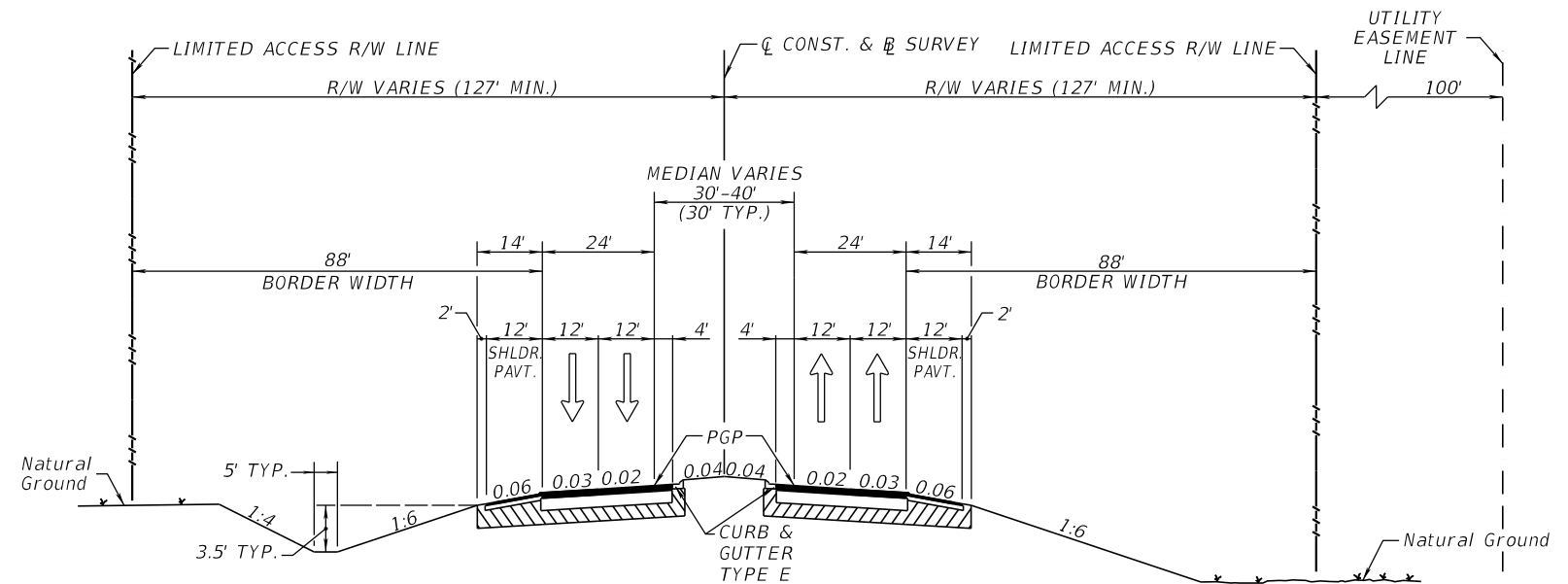
CRITERIA

- (X) NEW CONSTRUCTION / RECONSTRUCTION
- () RESURFACING (LA FACILITIES)
- () RRR (ARTERIALS & COLLECTORS)

POTENTIAL EXCEPTIONS AND VARIATIONS RELATED TO TYPICAL SECTION:

- 1. BORDER WIDTH

TYPICAL SECTION No. 3



**TYPICAL SECTION
NORTHEAST CONNECTOR EXTENSION (SR 534)**

STA. 939+70.66 TO STA. 949+24.15

TRAFFIC DATA

CURRENT YEAR = 2020 AADT = N/A
 ESTIMATED OPENING YEAR = 2025 AADT = 5,800
 ESTIMATED DESIGN YEAR = 2045 AADT = 19,000
 K = 11% D = 60% T = 4% (24 HOUR)
 DESIGN SPEED = 50 MPH
 POSTED SPEED = 50 MPH

SHEET NO.

4

PROJECT CONTROLS

CONTEXT CLASSIFICATION

- () C1 : NATURAL () C3C : SUBURBAN COMM.
- () C2 : RURAL () C4 : URBAN GENERAL
- () C2T : RURAL TOWN () C5 : URBAN CENTER
- () C3R : SUBURBAN RES. () C6 : URBAN CORE
- (X) N/A : L.A. FACILITY

FUNCTIONAL CLASSIFICATION

- () INTERSTATE () MAJOR COLLECTOR
- (X) FREEWAY/EXPWY. () MINOR COLLECTOR
- () PRINCIPAL ARTERIAL () LOCAL
- () MINOR ARTERIAL

HIGHWAY SYSTEM

- () NATIONAL HIGHWAY SYSTEM
- () STRATEGIC INTERMODAL SYSTEM
- (X) STATE HIGHWAY SYSTEM
- () OFF-STATE HIGHWAY SYSTEM

ACCESS CLASSIFICATION

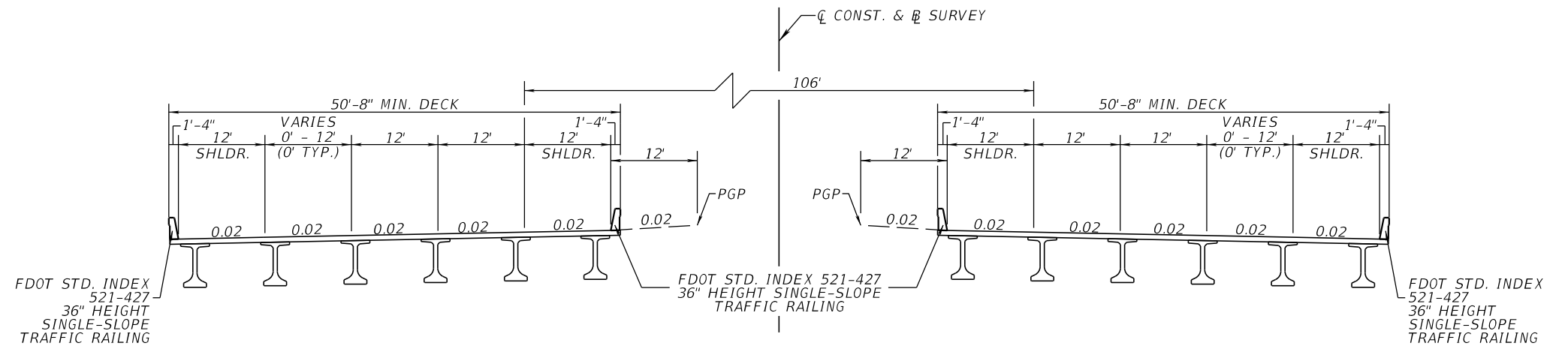
- (X) 1 - FREEWAY
- () 2 - RESTRICTIVE w/Service Roads
- () 3 - RESTRICTIVE w/660 ft. Connection Spacing
- () 4 - NON-RESTRICTIVE w/2640 ft. Signal Spacing
- () 5 - RESTRICTIVE w/440 ft. Connection Spacing
- () 6 - NON-RESTRICTIVE w/1320 ft. Signal Spacing
- () 7 - BOTH MEDIAN TYPES
- () N/A

CRITERIA

- (X) NEW CONSTRUCTION / RECONSTRUCTION
- () RESURFACING (LA FACILITIES)
- () RRR (ARTERIALS & COLLECTORS)

POTENTIAL EXCEPTIONS AND VARIATIONS RELATED TO TYPICAL SECTION:

TYPICAL SECTION No. 4



**BRIDGE TYPICAL SECTION
NORTHEAST CONNECTOR EXTENSION (SR 534)**

OVER FUTURE PLANNED LOCAL ROAD
OVER JACK BRACK ROAD
OVER CANAL 32C
OVER FUTURE SUNBRIDGE PARKWAY

**TRAFFIC DATA
STA. 753+56.04 TO STA. 807+53.43**

CURRENT YEAR = 2020 AADT = N/A
ESTIMATED OPENING YEAR = 2025 AADT = 19,000
ESTIMATED DESIGN YEAR = 2045 AADT = 35,900
K = 11% D = 60% T = 4 % (24 HOUR)
DESIGN SPEED = 70 MPH
POSTED SPEED = 70 MPH

**TRAFFIC DATA
STA. 807+53.43 TO STA. 939+70.66**

CURRENT YEAR = 2020 AADT = N/A
ESTIMATED OPENING YEAR = 2025 AADT = 5,800
ESTIMATED DESIGN YEAR = 2045 AADT = 19,000
K = 11% D = 60% T = 4 % (24 HOUR)
DESIGN SPEED = 70 MPH
POSTED SPEED = 70 MPH

SHEET NO.

5

THE OFFICIAL RECORD OF THIS SHEET IS THE ELECTRONIC FILE DIGITALLY SIGNED AND SEALED UNDER RULE 61G15-23.004, F.A.C.

PROJECT CONTROLS

CONTEXT CLASSIFICATION

- () C1 : NATURAL () C3C : SUBURBAN COMM.
- () C2 : RURAL () C4 : URBAN GENERAL
- () C2T : RURAL TOWN () C5 : URBAN CENTER
- () C3R : SUBURBAN RES. () C6 : URBAN CORE
- (X) N/A : L.A. FACILITY

FUNCTIONAL CLASSIFICATION

- () INTERSTATE () MAJOR COLLECTOR
- (X) FREEWAY/EXPWY. () MINOR COLLECTOR
- () PRINCIPAL ARTERIAL () LOCAL
- () MINOR ARTERIAL

HIGHWAY SYSTEM

- () NATIONAL HIGHWAY SYSTEM
- () STRATEGIC INTERMODAL SYSTEM
- (X) STATE HIGHWAY SYSTEM
- () OFF-STATE HIGHWAY SYSTEM

ACCESS CLASSIFICATION

- (X) 1 - FREEWAY
- () 2 - RESTRICTIVE w/Service Roads
- () 3 - RESTRICTIVE w/660 ft. Connection Spacing
- () 4 - NON-RESTRICTIVE w/2640 ft. Signal Spacing
- () 5 - RESTRICTIVE w/440 ft. Connection Spacing
- () 6 - NON-RESTRICTIVE w/1320 ft. Signal Spacing
- () 7 - BOTH MEDIAN TYPES
- () N/A

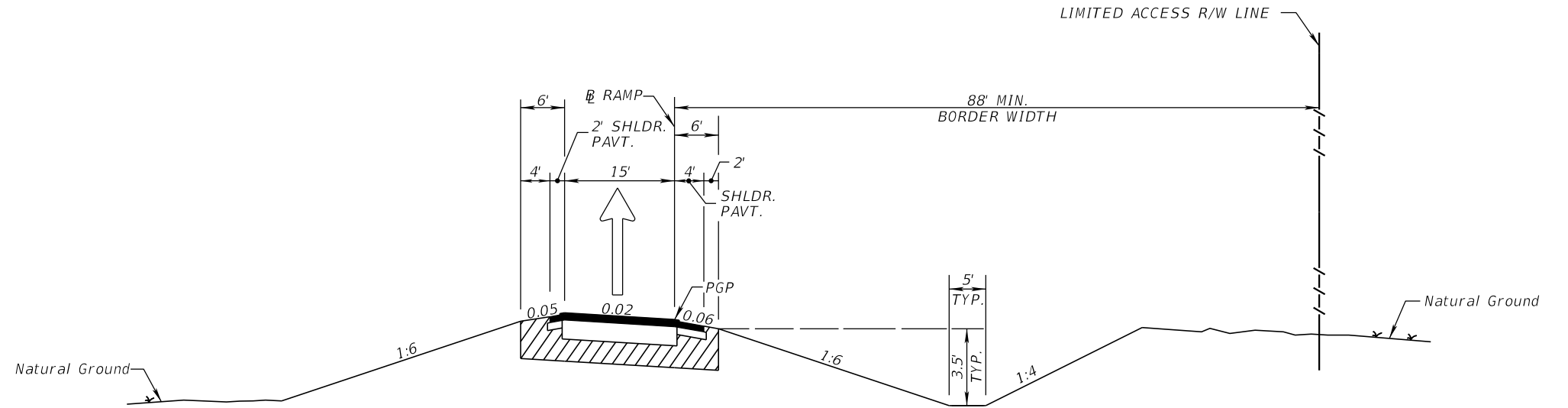
CRITERIA

- (X) NEW CONSTRUCTION / RECONSTRUCTION
- () RESURFACING (LA FACILITIES)
- () RRR (ARTERIALS & COLLECTORS)

POTENTIAL EXCEPTIONS AND VARIATIONS RELATED TO TYPICAL SECTION:

- 1. BORDER WIDTH

TYPICAL SECTION No. 5



**TYPICAL SECTION
SINGLE LANE RAMP**

**NB & SB EXIT RAMPS FROM NORTHEAST CONNECTOR TO JACK BRACK ROAD
NB & SB ENTRANCE RAMPS TO NORTHEAST CONNECTOR FROM JACK BRACK ROAD**

**TRAFFIC DATA
SB EXIT RAMP &
NB ENTRANCE RAMP**

CURRENT YEAR = 2020 AADT = N/A
 ESTIMATED OPENING YEAR = 2025 AADT = 15,500
 ESTIMATED DESIGN YEAR = 2045 AADT = 18,600
 K = 11% D = 60% T = 4 % (24 HOUR)
 DESIGN SPEED = 50 MPH
 POSTED SPEED = 50 MPH

**TRAFFIC DATA
NB EXIT RAMP &
SB ENTRANCE RAMP**

CURRENT YEAR = 2020 AADT = N/A
 ESTIMATED OPENING YEAR = 2025 AADT = 1,500
 ESTIMATED DESIGN YEAR = 2045 AADT = 1,700
 K = 11% D = 60% T = 4 % (24 HOUR)
 DESIGN SPEED = 50 MPH
 POSTED SPEED = 50 MPH

SHEET NO.

6

PROJECT CONTROLS

CONTEXT CLASSIFICATION

- () C1 : NATURAL () C3C : SUBURBAN COMM.
- () C2 : RURAL () C4 : URBAN GENERAL
- () C2T : RURAL TOWN () C5 : URBAN CENTER
- (X) C3R : SUBURBAN RES. () C6 : URBAN CORE
- () N/A : L.A. FACILITY

FUNCTIONAL CLASSIFICATION

- () INTERSTATE () MAJOR COLLECTOR
- () FREEWAY/EXPWY. () MINOR COLLECTOR
- () PRINCIPAL ARTERIAL () LOCAL
- (X) MINOR ARTERIAL

HIGHWAY SYSTEM

- () NATIONAL HIGHWAY SYSTEM
- () STRATEGIC INTERMODAL SYSTEM
- () STATE HIGHWAY SYSTEM
- (X) OFF-STATE HIGHWAY SYSTEM

ACCESS CLASSIFICATION

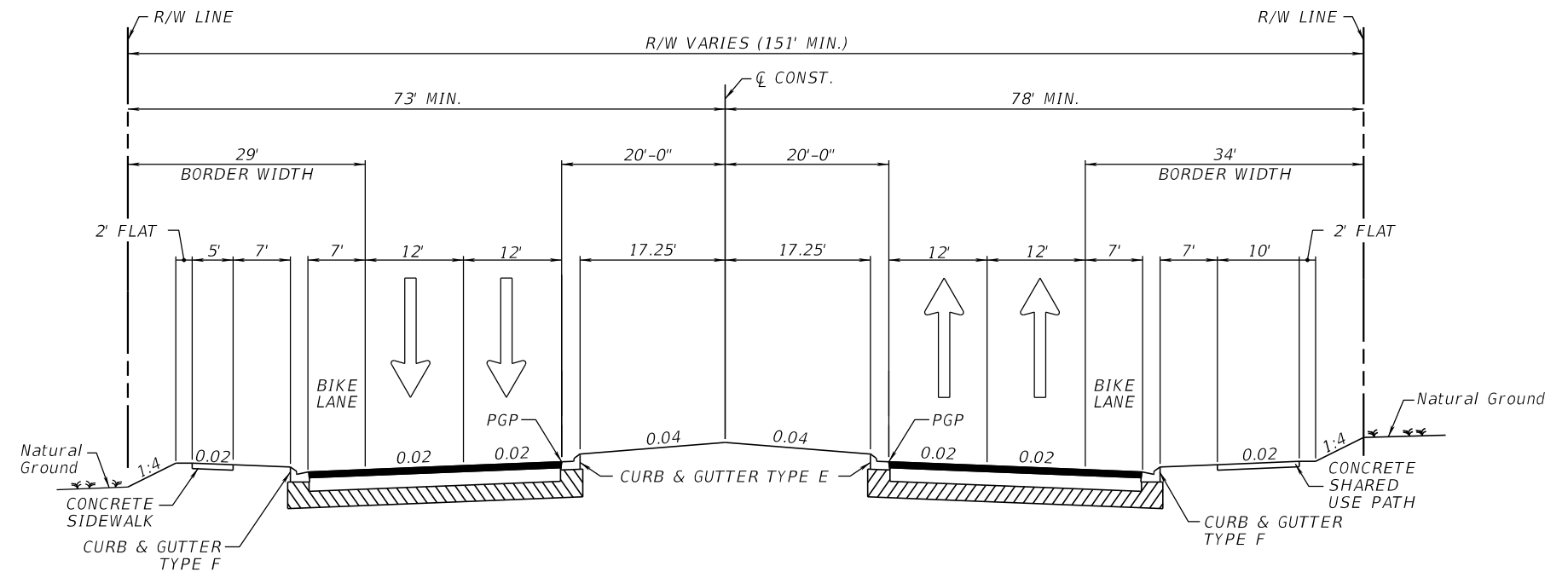
- () 1 - FREEWAY
- () 2 - RESTRICTIVE w/Service Roads
- () 3 - RESTRICTIVE w/660 ft. Connection Spacing
- () 4 - NON-RESTRICTIVE w/2640 ft. Signal Spacing
- () 5 - RESTRICTIVE w/440 ft. Connection Spacing
- () 6 - NON-RESTRICTIVE w/1320 ft. Signal Spacing
- () 7 - BOTH MEDIAN TYPES
- (X) N/A

CRITERIA

- (X) NEW CONSTRUCTION / RECONSTRUCTION
- () RESURFACING (LA FACILITIES)
- () RRR (ARTERIALS & COLLECTORS)

POTENTIAL EXCEPTIONS AND VARIATIONS RELATED TO TYPICAL SECTION:

TYPICAL SECTION No. 6



TYPICAL SECTION JACK BRACK ROAD

TRAFFIC DATA WEST JACK BRACK ROAD

CURRENT YEAR = 2020 AADT = N/A
 ESTIMATED OPENING YEAR = 2025 AADT = 12,600
 ESTIMATED DESIGN YEAR = 2045 AADT = 22,300
 K = 9 % D = 55% T = 4 % (24 HOUR)
 DESIGN SPEED = 35 MPH
 POSTED SPEED = 35 MPH

TRAFFIC DATA EAST JACK BRACK ROAD

CURRENT YEAR = 2020 AADT = N/A
 ESTIMATED OPENING YEAR = 2025 AADT = 12,800
 ESTIMATED DESIGN YEAR = 2045 AADT = 22,800
 K = 9 % D = 55% T = 4 % (24 HOUR)
 DESIGN SPEED = 35 MPH
 POSTED SPEED = 35 MPH

SHEET NO.

7

PROJECT CONTROLS

CONTEXT CLASSIFICATION

- () C1 : NATURAL () C3C : SUBURBAN COMM.
- () C2 : RURAL () C4 : URBAN GENERAL
- () C2T : RURAL TOWN () C5 : URBAN CENTER
- (X) C3R : SUBURBAN RES. () C6 : URBAN CORE
- () N/A : L.A. FACILITY

FUNCTIONAL CLASSIFICATION

- () INTERSTATE () MAJOR COLLECTOR
- () FREEWAY/EXPWY. () MINOR COLLECTOR
- () PRINCIPAL ARTERIAL () LOCAL
- (X) MINOR ARTERIAL

HIGHWAY SYSTEM

- () NATIONAL HIGHWAY SYSTEM
- () STRATEGIC INTERMODAL SYSTEM
- () STATE HIGHWAY SYSTEM
- (X) OFF-STATE HIGHWAY SYSTEM

ACCESS CLASSIFICATION

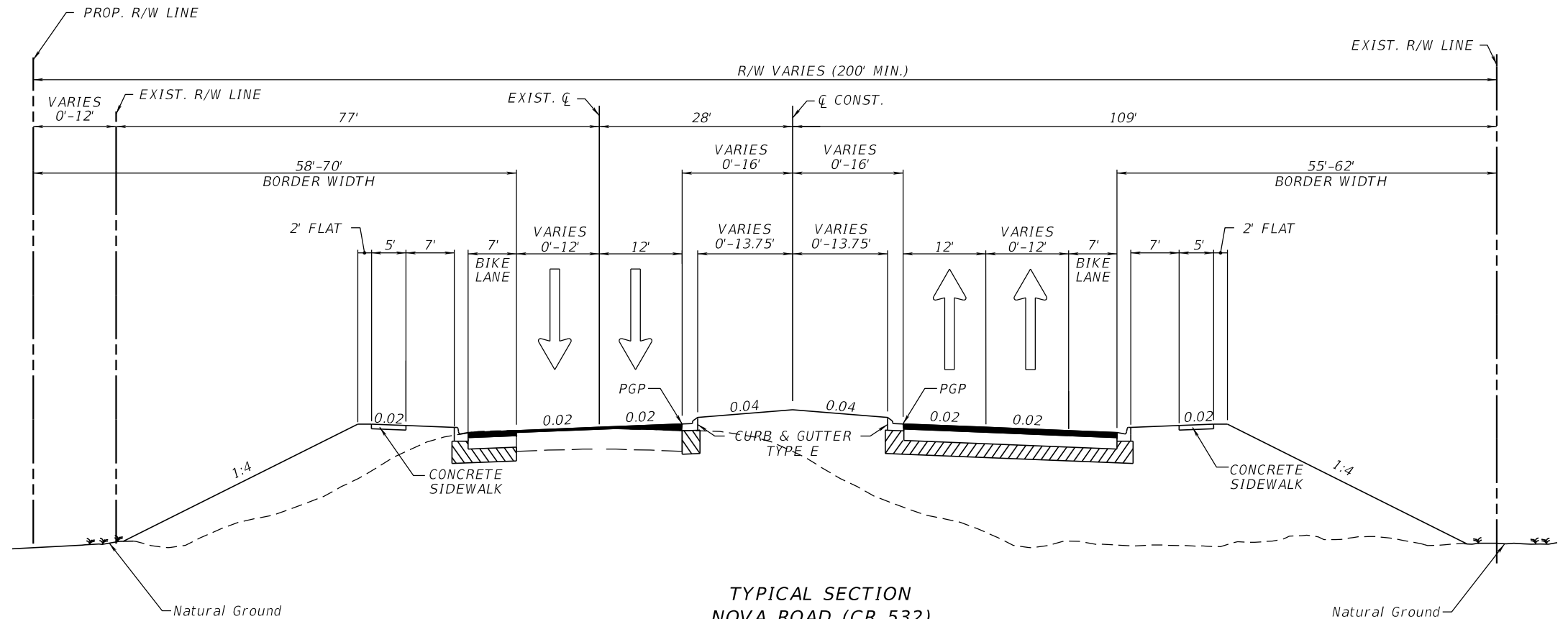
- () 1 - FREEWAY
- () 2 - RESTRICTIVE w/Service Roads
- () 3 - RESTRICTIVE w/660 ft. Connection Spacing
- () 4 - NON-RESTRICTIVE w/2640 ft. Signal Spacing
- () 5 - RESTRICTIVE w/440 ft. Connection Spacing
- () 6 - NON-RESTRICTIVE w/1320 ft. Signal Spacing
- () 7 - BOTH MEDIAN TYPES
- (X) N/A

CRITERIA

- (X) NEW CONSTRUCTION / RECONSTRUCTION
- () RESURFACING (LA FACILITIES)
- () RRR (ARTERIALS & COLLECTORS)

POTENTIAL EXCEPTIONS AND VARIATIONS RELATED TO TYPICAL SECTION:

TYPICAL SECTION No. 7



**TYPICAL SECTION
NOVA ROAD (CR 532)
STA. 104+51.73 TO STA. 162+99.48**

**TRAFFIC DATA
STA. 104+51.73 TO STA. 132+51.16**

CURRENT YEAR	= 2020 AADT = 8,600
ESTIMATED OPENING YEAR	= 2025 AADT = 9,600
ESTIMATED DESIGN YEAR	= 2045 AADT = 21,500
K = 9 % D = 55% T = 6 % (24 HOUR)	
DESIGN SPEED = 50 MPH	
POSTED SPEED = 50 MPH	

**TRAFFIC DATA
STA. 132+51.16 TO 162+99.48**

CURRENT YEAR	= 2020 AADT = 2,000
ESTIMATED OPENING YEAR	= 2025 AADT = 8,300
ESTIMATED DESIGN YEAR	= 2045 AADT = 16,900
K = 9 % D = 55% T = 6 % (24 HOUR)	
DESIGN SPEED = 50 MPH	
POSTED SPEED = 50 MPH	

SHEET NO.

8

THE OFFICIAL RECORD OF THIS SHEET IS THE ELECTRONIC FILE DIGITALLY SIGNED AND SEALED UNDER RULE 61G15-23.004, F.A.C.