




# **SR 417 (Seminole Expressway) to Orlando Sanford International Airport Connector Concept, Feasibility, and Mobility Study**

Shemir Wiles, Quest Corporation of America  
Sunserea Gates, VHB

**— January 25, 2023 —**

# SR 417 to Orlando Sanford Airport Connector

1 of 50 Stop presenting TO MUTE OR UNMUTE YOURSELF Leave



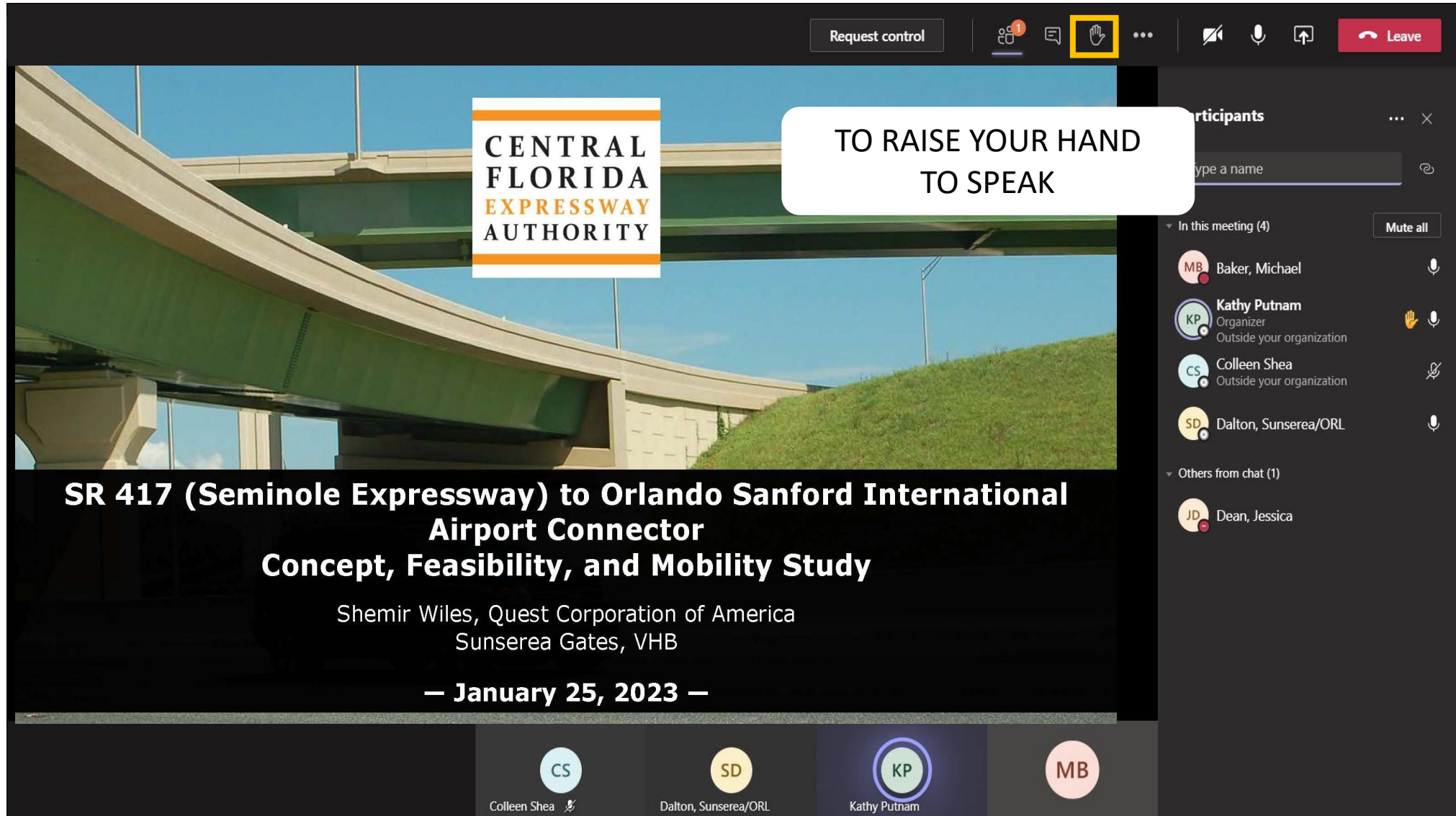
**CENTRAL  
FLORIDA  
EXPRESSWAY  
AUTHORITY**

**SR 417 (Seminole Expressway) to Orlando Sanford International  
Airport Connector  
Concept, Feasibility, and Mobility Study**

Shemir Wiles, Quest Corporation of America  
Sunserea Gates, VHB

— January 25, 2023 —

# SR 417 to Orlando Sanford Airport Connector



The image shows a Zoom meeting interface. The main video area displays a presentation slide with the Central Florida Expressway Authority logo and a title about a concept study for a connector to Orlando Sanford International Airport. A white callout box with the text "TO RAISE YOUR HAND TO SPEAK" is overlaid on the video. The top of the Zoom window shows a toolbar with icons for request control, chat, hand raise (highlighted with a yellow box), and a "Leave" button. The right sidebar shows a list of participants: Michael Baker, Kathy Putnam (Organizer, Outside your organization, with a hand icon), Colleen Shea (Outside your organization), Dalton, Sunserea/ORL, and Jessica Dean (Others from chat). The bottom of the window shows a gallery view of the participants' video feeds.

**CENTRAL FLORIDA EXPRESSWAY AUTHORITY**

**TO RAISE YOUR HAND TO SPEAK**

**SR 417 (Seminole Expressway) to Orlando Sanford International Airport Connector**  
**Concept, Feasibility, and Mobility Study**

Shemir Wiles, Quest Corporation of America  
Sunserea Gates, VHB

— January 25, 2023 —

**Participants**

Type a name

In this meeting (4)

Mute all

- MB Baker, Michael
- KP Kathy Putnam  
Organizer  
Outside your organization
- CS Colleen Shea  
Outside your organization
- SD Dalton, Sunserea/ORL

Others from chat (1)

- JD Dean, Jessica

CS Colleen Shea

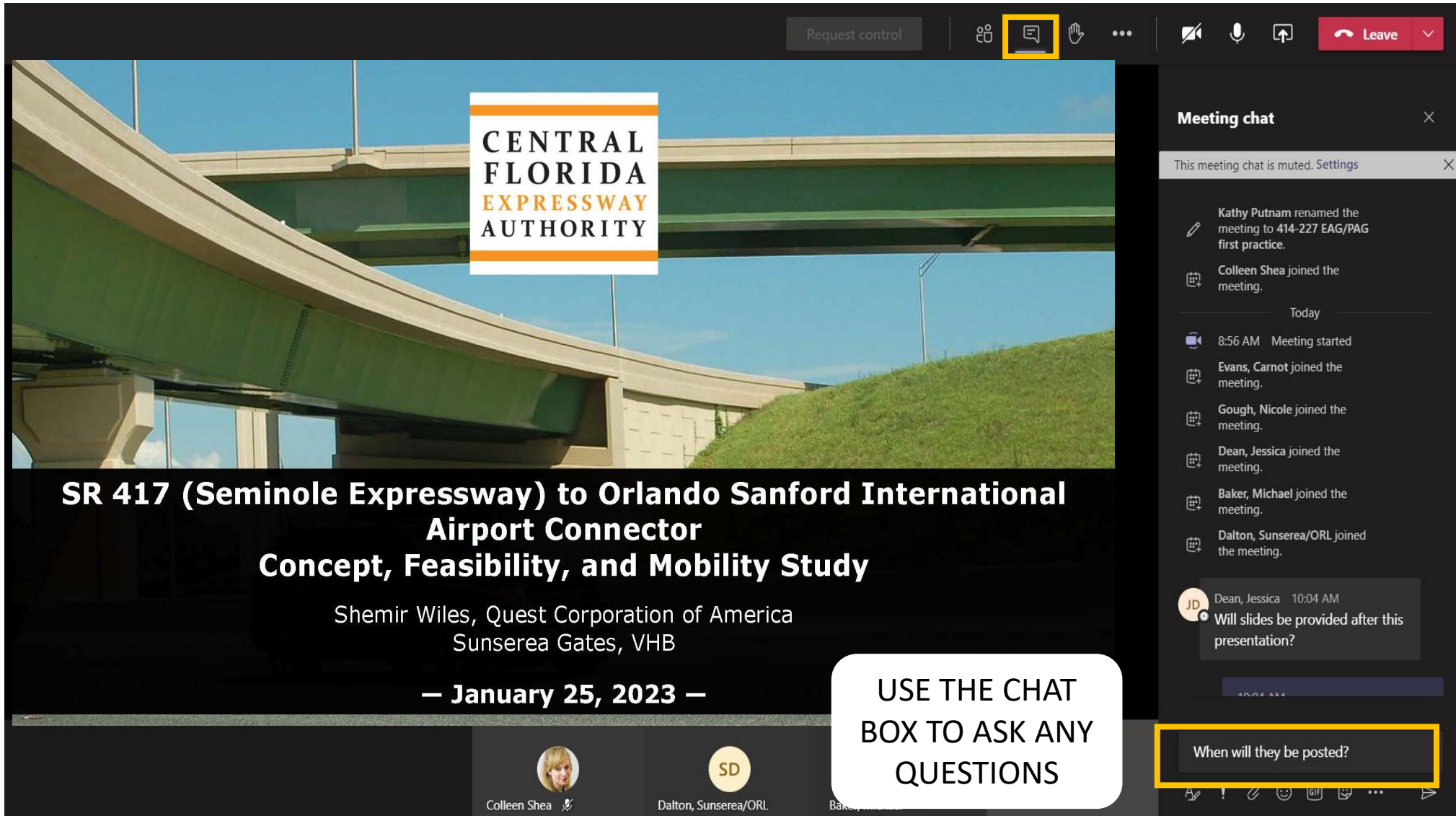
SD Dalton, Sunserea/ORL

KP Kathy Putnam

MB

**CENTRAL FLORIDA EXPRESSWAY AUTHORITY**

# SR 417 to Orlando Sanford Airport Connector



The screenshot shows a Zoom meeting in progress. The main video feed displays a bridge structure with the Central Florida Expressway Authority logo overlaid. The meeting title is "SR 417 (Seminole Expressway) to Orlando Sanford International Airport Connector Concept, Feasibility, and Mobility Study". The presenter is Shemir Wiles, Quest Corporation of America, Sunserea Gates, VHB. The date is January 25, 2023. The meeting chat is open on the right, showing a list of participants and a chat box at the bottom with the text "When will they be posted?". A yellow box highlights the chat box. A white callout bubble with the text "USE THE CHAT BOX TO ASK ANY QUESTIONS" is also present.

**CENTRAL FLORIDA EXPRESSWAY AUTHORITY**

**SR 417 (Seminole Expressway) to Orlando Sanford International Airport Connector**  
**Concept, Feasibility, and Mobility Study**

Shemir Wiles, Quest Corporation of America  
Sunserea Gates, VHB

— January 25, 2023 —

**USE THE CHAT BOX TO ASK ANY QUESTIONS**

**Meeting chat**

This meeting chat is muted. Settings

Kathy Putnam renamed the meeting to 414-227 EAG/PAG first practice.

Colleen Shea joined the meeting.

Today

8:56 AM Meeting started

Evans, Carnot joined the meeting.

Gough, Nicole joined the meeting.

Dean, Jessica joined the meeting.

Baker, Michael joined the meeting.

Dalton, Sunserea/ORL joined the meeting.

JD Dean, Jessica 10:04 AM  
Will slides be provided after this presentation?

When will they be posted?

Colleen Shea

Dalton, Sunserea/ORL

**CENTRAL FLORIDA EXPRESSWAY AUTHORITY**

# SR 417 to Orlando Sanford Airport Connector

1 of 50 Stop presenting

CENTRAL  
FLORIDA  
EXPRESSWAY  
AUTHORITY

**SR 417 (Seminole Expressway) to Orlando Sanford International  
Airport Connector  
Concept, Feasibility, and Mobility Study**

Shemir Wiles, Quest Corporation of America  
Sunserea Gates, VHB

— January 25, 2023 —

NOTE THE  
SLIDE NUMBER

CENTRAL  
FLORIDA  
EXPRESSWAY  
AUTHORITY

5

# SR 417 to Orlando Sanford Airport Connector

Request control

Leave

CENTRAL  
FLORIDA  
EXPRESSWAY  
AUTHORITY

TO VIEW THE  
PARTICIPANTS

SR 417 (Seminole Expressway) to Orlando Sanford International  
Airport Connector  
Concept, Feasibility, and Mobility Study

Shemir Wiles, Quest Corporation of America  
Sunserea Gates, VHB

— January 25, 2023 —

Participants

Type a name

In this meeting (4)

Mute all

MB Baker, Michael

CS Colleen Shea  
Outside your organization

SD Dalton, Sunserea/ORL

KP Kathy Putnam  
Organizer  
Outside your organization

Others from chat (1)

JD Dean, Jessica

CS Colleen Shea

SD Dalton, Sunserea/ORL

KP Kathy Putnam

MB

CENTRAL  
FLORIDA  
EXPRESSWAY  
AUTHORITY

6

# Title VI Compliance

This meeting, project, or study is being conducted without regard to race, color, national origin, age, sex, religion, disability or family status.

Persons wishing to express their concerns relative to compliance by the Central Florida Expressway Authority (CFX) with Title VI may do so by contacting:

Shemir Wiles

Public Involvement Coordinator

4974 ORL Tower Road Orlando, FL 32807

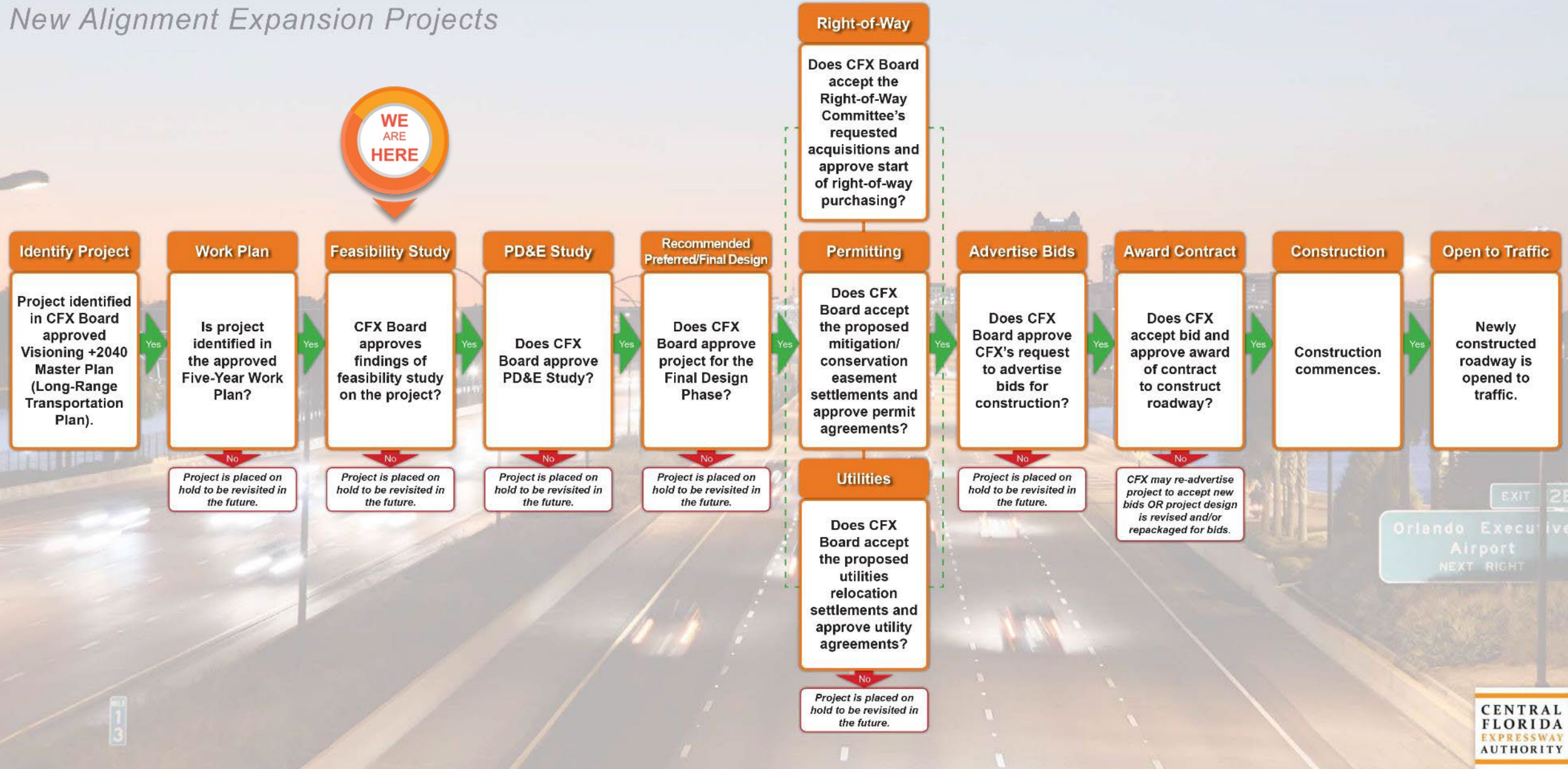
407-802-3210

[ConceptStudies@CFXway.com](mailto:ConceptStudies@CFXway.com)

All inquiries or complaints will be handled according to CFX procedure and in a prompt and courteous manner.

# PROJECT DEVELOPMENT PROCESS

## New Alignment Expansion Projects



# Advisory Group Roles

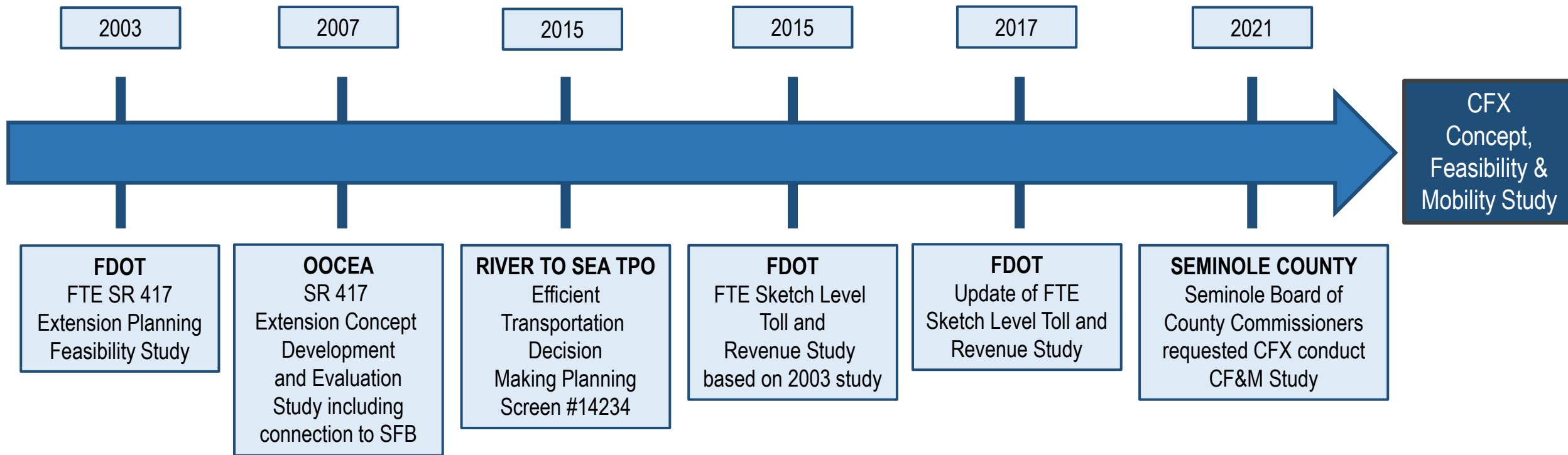
## Environmental (EAG)

- Natural environment analysis
- Special advisory resource
- Input on environmental impact of project alternatives
- Local knowledge, issues and concerns regarding environmental impacts

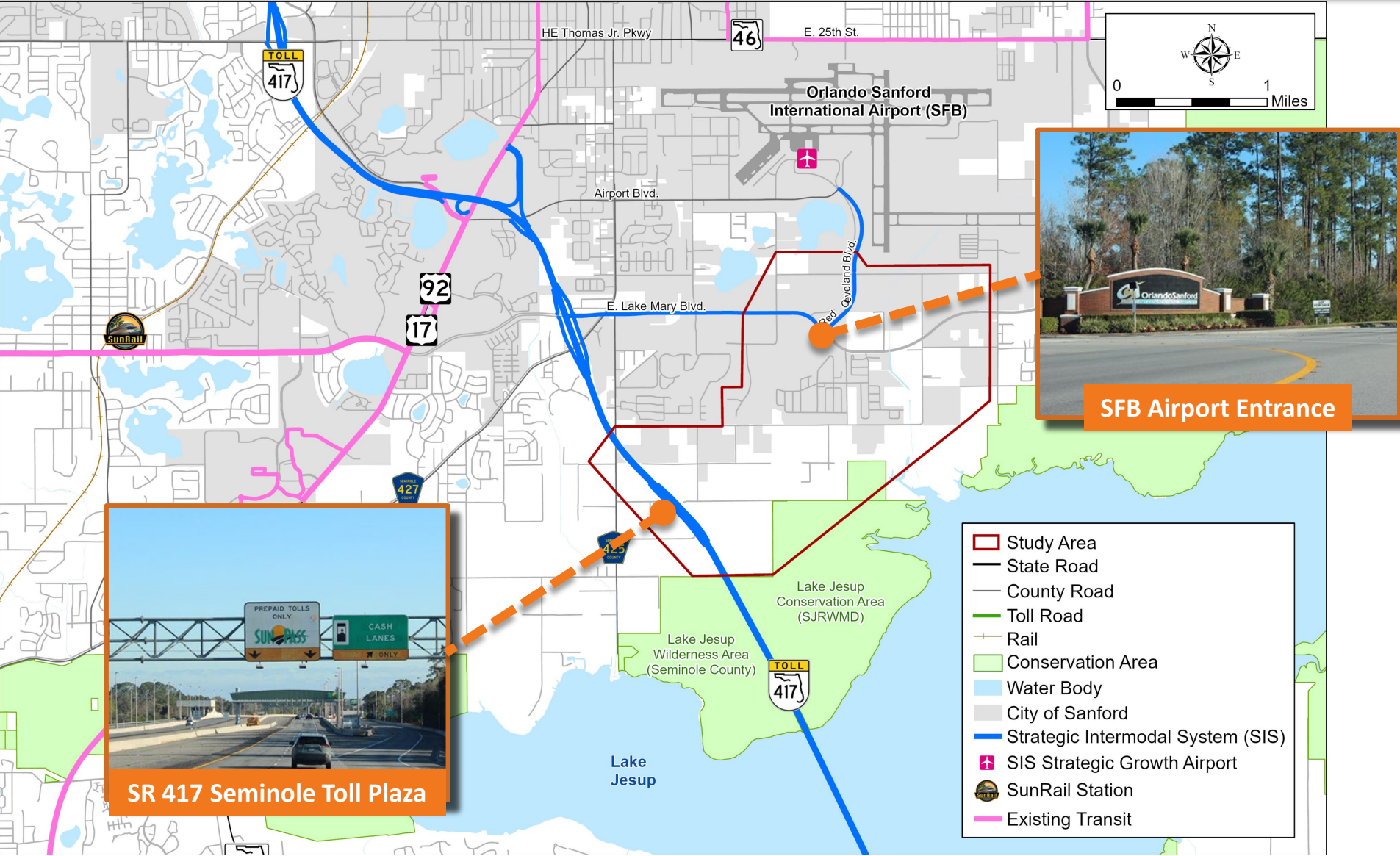
## Project (PAG)

- Mobility analysis
- Special advisory resource
- Input on project alternatives
- Local knowledge, issues and concerns

# Project Background

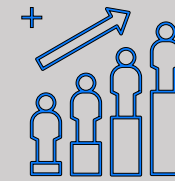


# Regional Location Map



# Purpose and Need

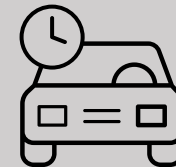
- Airport projected to serve 2.7M passengers by 2037 (91% increase)
- 10 planned developments or 55% of study area vacant lands
- Seminole County population (2050)
- SR 417 and CR 427/E. Lake Mary Blvd. Interchange Traffic Volume
  - 2050 No-Action AADT – 47,900
  - 2050 Build AADT – 30,900



**Supports  
Passenger Growth**



**Improves Regional  
Connectivity**



**Relieves  
Constrained Local  
Roadways**

# Study Objectives

Identify Feasible Alternatives to provide a limited access connection within the study limits, including:

- Identify transportation mobility options
- Enhance direct access to the Orlando Sanford International Airport
- Enhance mobility for the area's growing population and economy
- Provide consistency with local plans and policies
- Promote regional connectivity
- Fulfill the recommendation of Seminole Board of County Commissioners to re-evaluate this corridor

# CF&M Evaluation Criteria

## Social Environment

- ❖ Residential
- ❖ Business
- ❖ Schools
- ❖ Churches
- ❖ Fire Stations
- ❖ Law Enforcement Facilities
- ❖ Cemeteries
- ❖ Approved and Planned Developments

## Physical Environment

- ❖ Noise Sensitive Areas
- ❖ Railroads
- ❖ Major Utilities
- ❖ Contamination Sites
- ❖ Hazardous Material Sites
- ❖ Industrial Sites
- ❖ Underground Fuel Tanks

## Natural Environment

- ❖ Wetlands
- ❖ Floodplains
- ❖ Protected Species
- ❖ Wildlife Habitat

## Cultural Environment

- ❖ Parks & Recreation
- ❖ Public Lands
- ❖ Conservation Areas
- ❖ Trails & Greenways
- ❖ Potential Archaeological Sites
- ❖ Potential Historic Resources

# Sociocultural Constraints

## Planned Developments

## Agricultural Lands

## Vacant Parcel

Study Area

Parcel Boundary

SFB Boundary

City of Sanford Boundary

Water Bodies

Seminole Toll Plaza

Existing Neighborhood

Trails

Solid Waste Facility

General Disposal Area

ERIC Waste Cleanup Site

Trailhead

School

Sanford Army Reserve

Church

Boombah Sports Complex

Historic Resource Group

Historic Structure

Existing Land Use (Sept. 2022)

Residential

Vacant

Agriculture

Planned Development (Permitted)

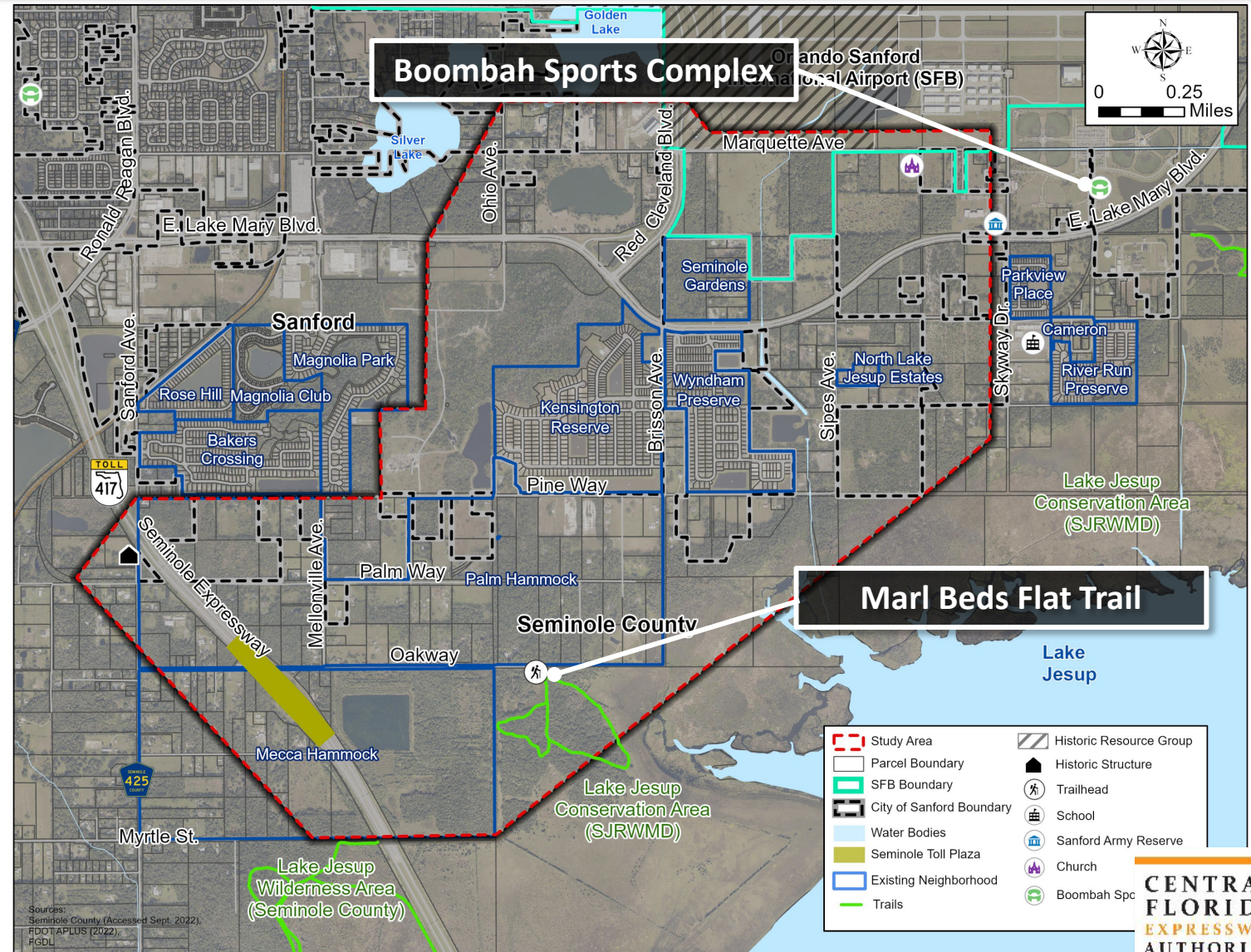
Planned Development (Pending)

15

# Existing Conditions – Community Facilities

## Community Focal Points:

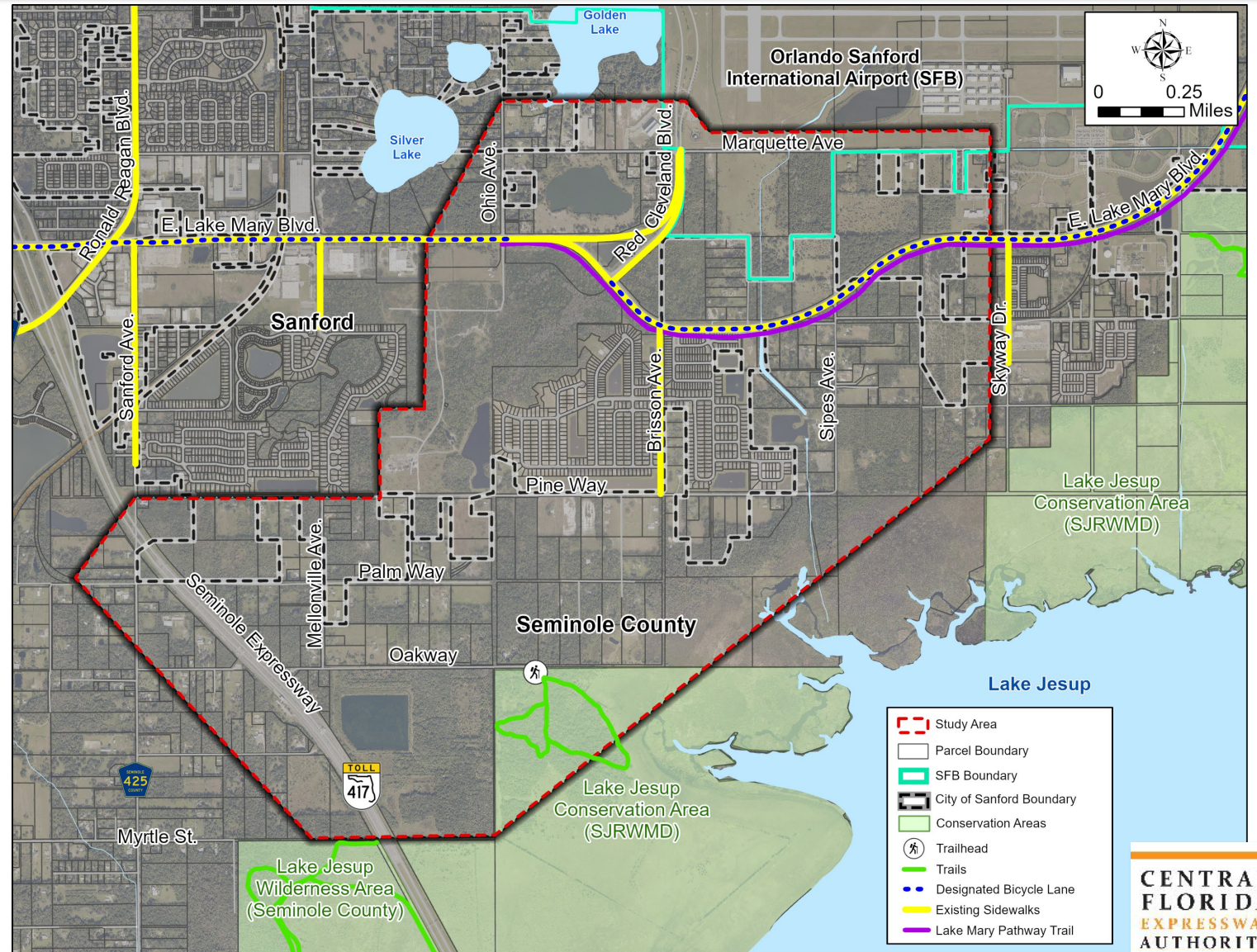
- Recreation Facilities
  - Boombah Sports Complex
  - Marl Beds Flat Trailhead and Trail
- Religious Facilities
- Sanford Army Reserve
- Galileo School for Gifted Learning
- Orlando Sanford International Airport (SFB)



# Existing Conditions – Bicycle and Pedestrian

## Pedestrian and Bicycle Facilities:

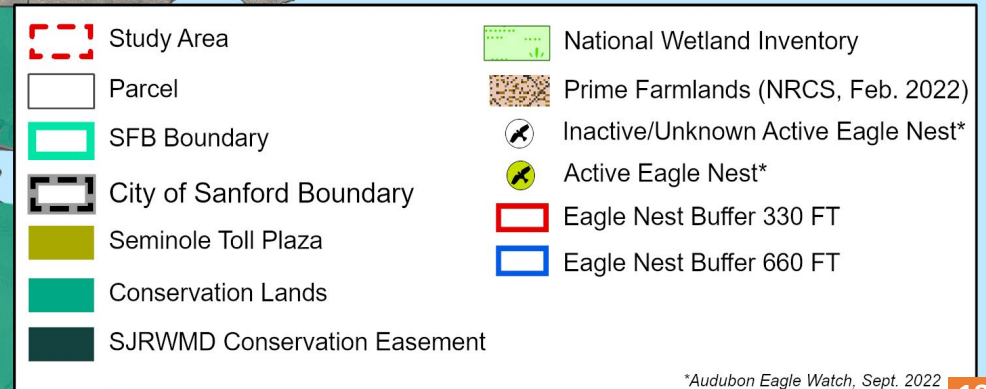
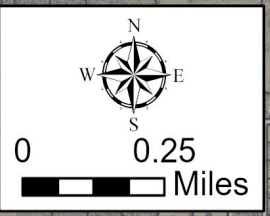
- 5-ft-wide sidewalks (East Lake Mary Blvd.)
- 8-ft-wide multi-use pathway (Lake Mary Pathway)
- Marl Beds Flat Trailhead and Trail (Lake Jesup Conservation Area)



# Natural Constraints

Minimization (SJRWMD  
Conservation Easements)

Avoidance Areas (Public  
Lands/Conservation)



\*Audubon Eagle Watch, Sept. 2022

# Existing Conditions – Floodplains

- 100-Year Floodplain (Zone AE) in the southeastern portion of study area



# Existing Conditions – Species

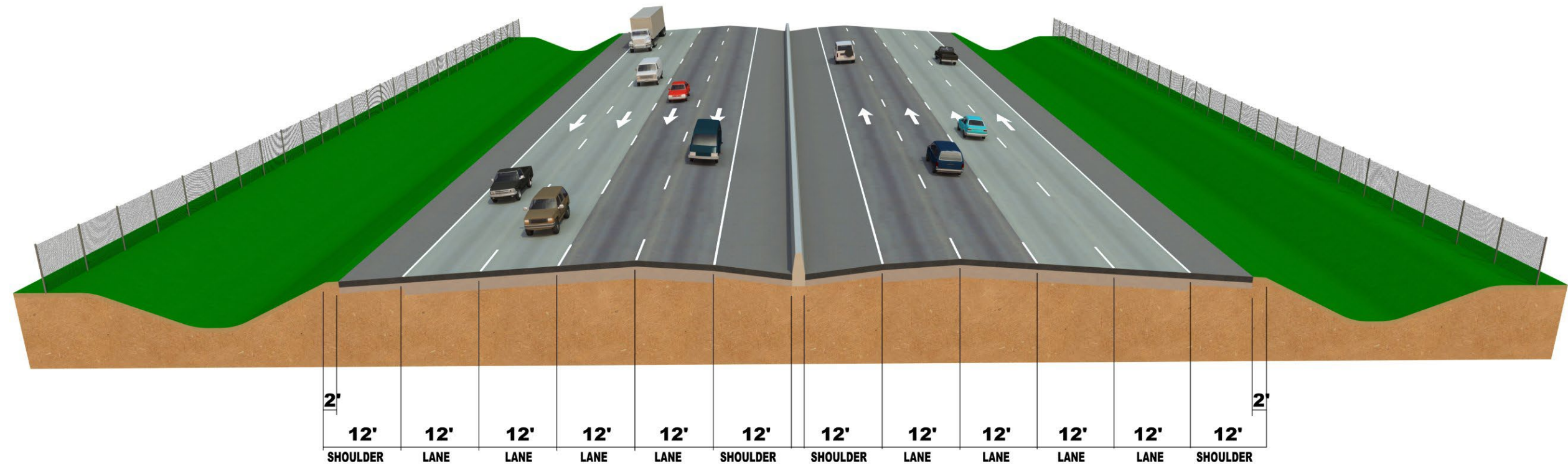
## Protected Species & Habitat

Consultation Areas: Florida scrub-jay, Everglade snail kite, crested caracara, and manatee (Lake Jesup).

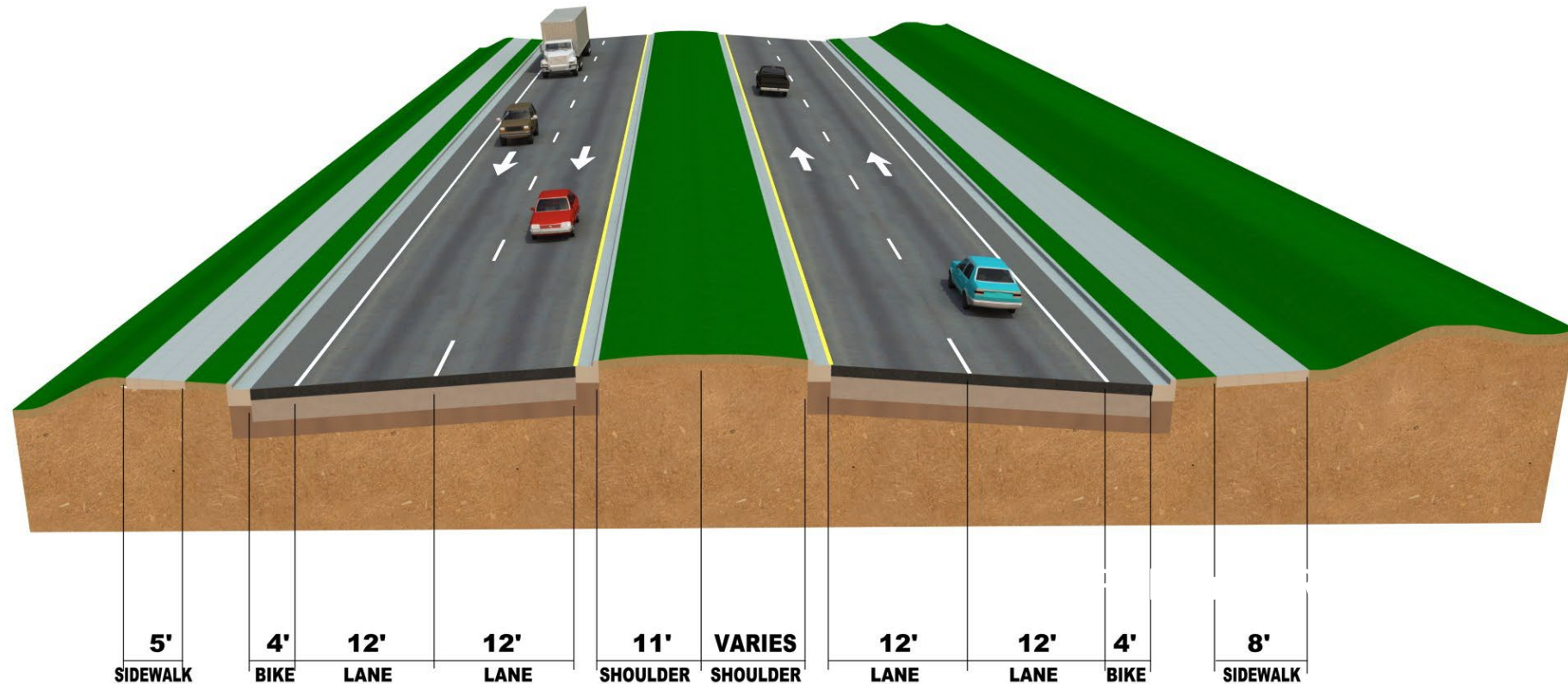
Additional Species Involvement: Eastern indigo snake, Florida sandhill crane, little blue heron, bald eagle (up to five nests), Florida black bear, gopher tortoise, roseate spoonbill, and pygmy fringe-tree.



# Ultimate SR 417 Typical Section

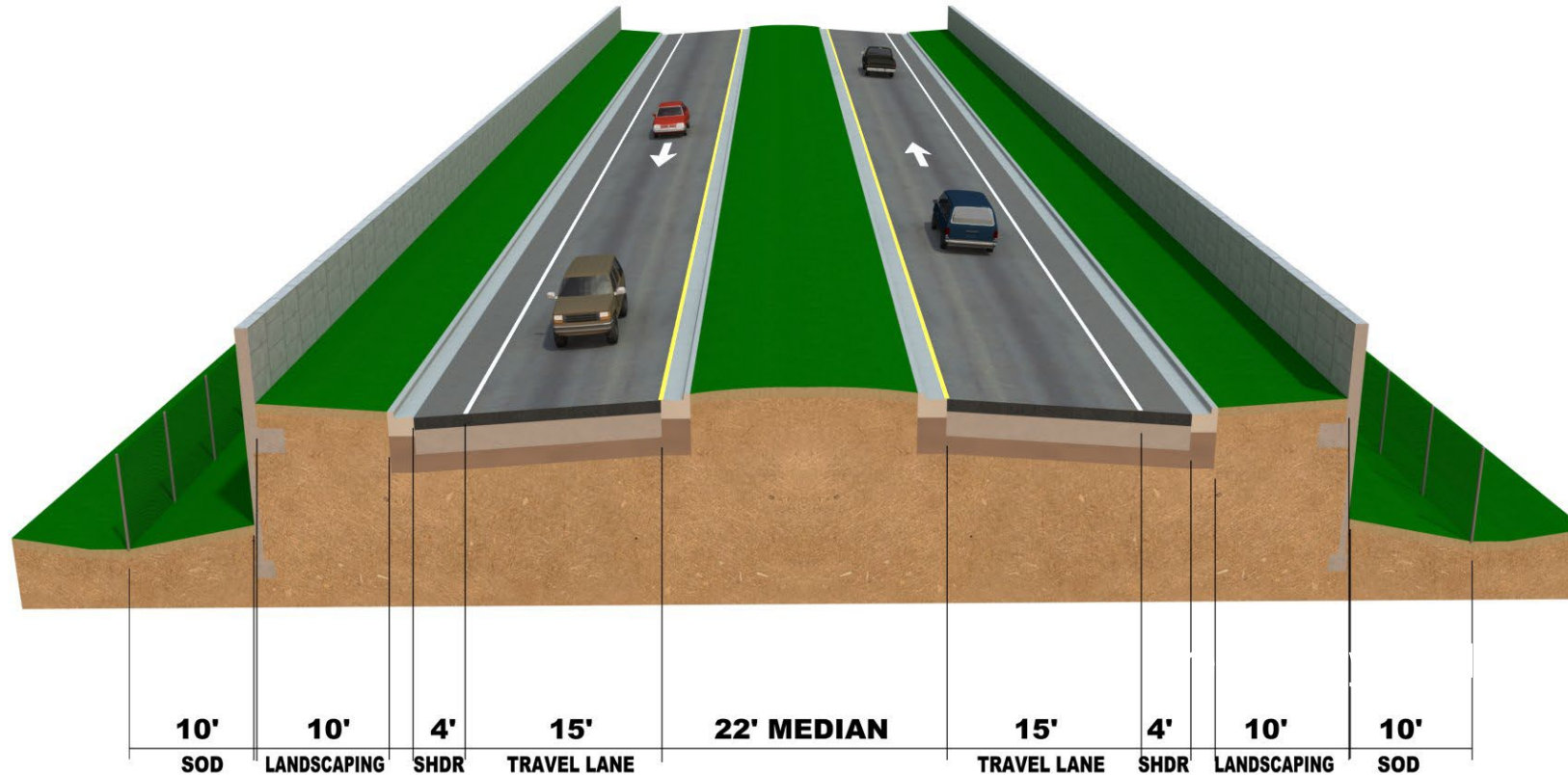


# East Lake Mary Blvd. Existing Typical Section



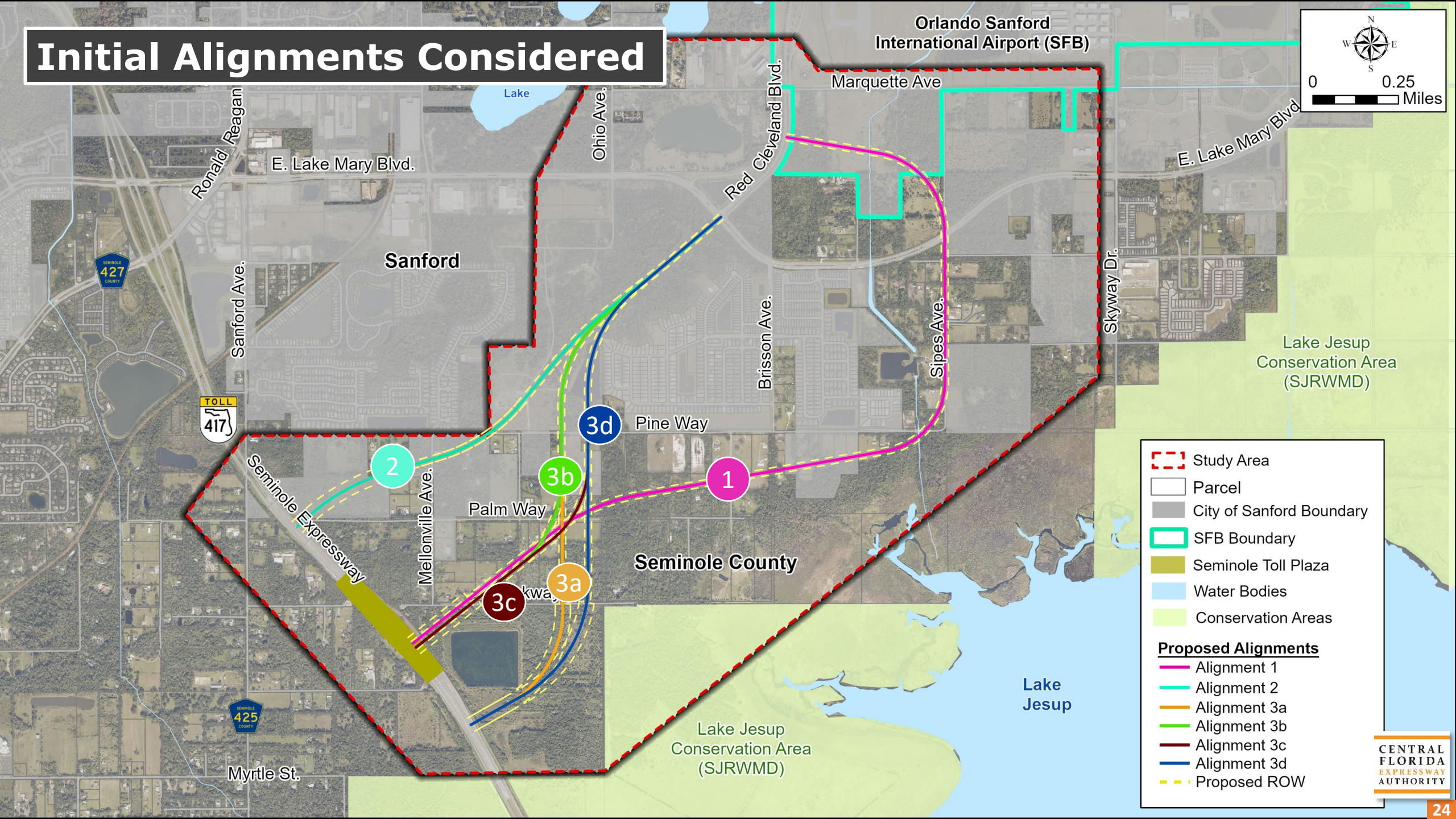
(from Ohio Avenue to Brisson Avenue)

# Proposed Connector Typical Section

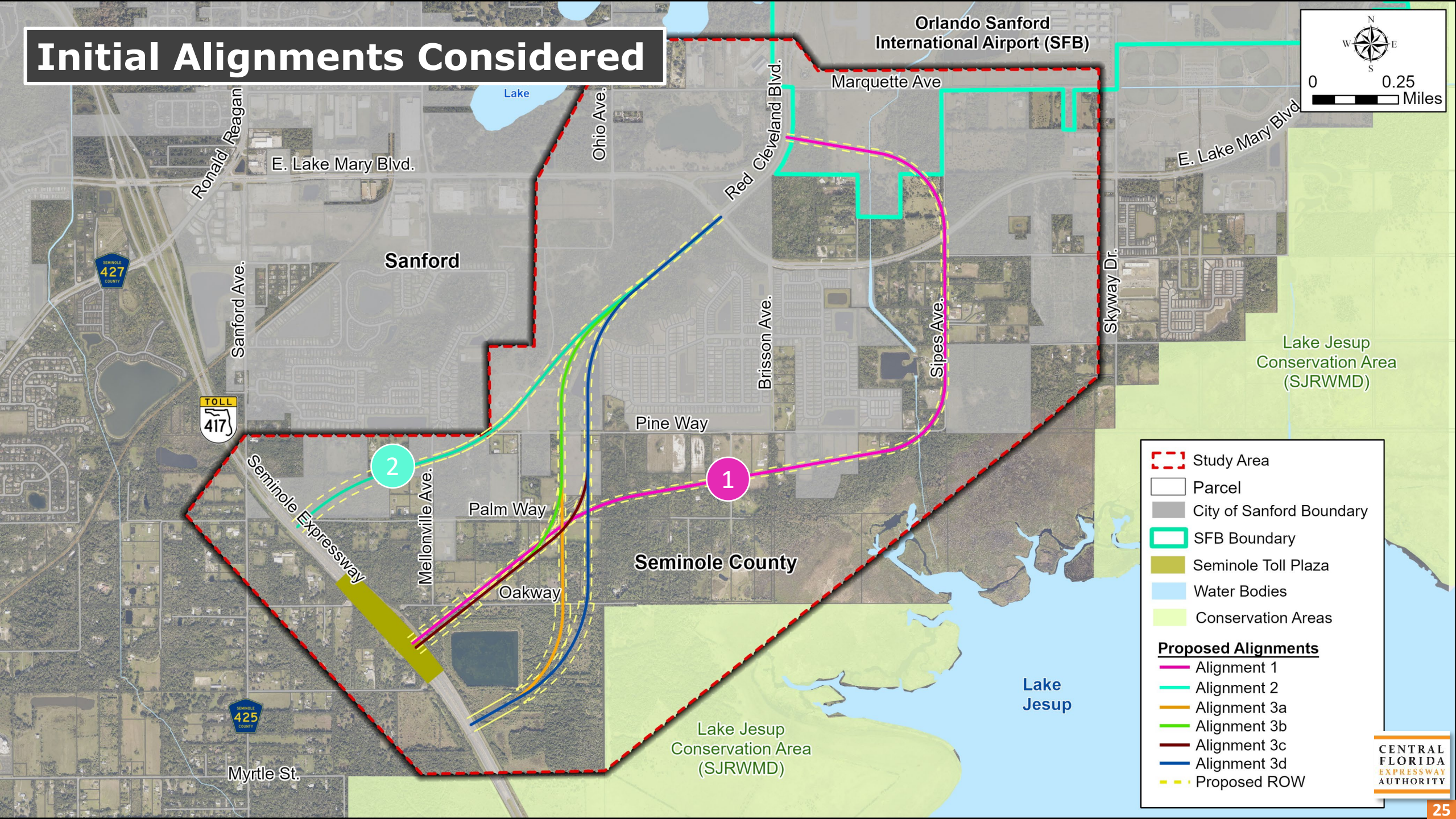


Design Speed = 45-50 mph

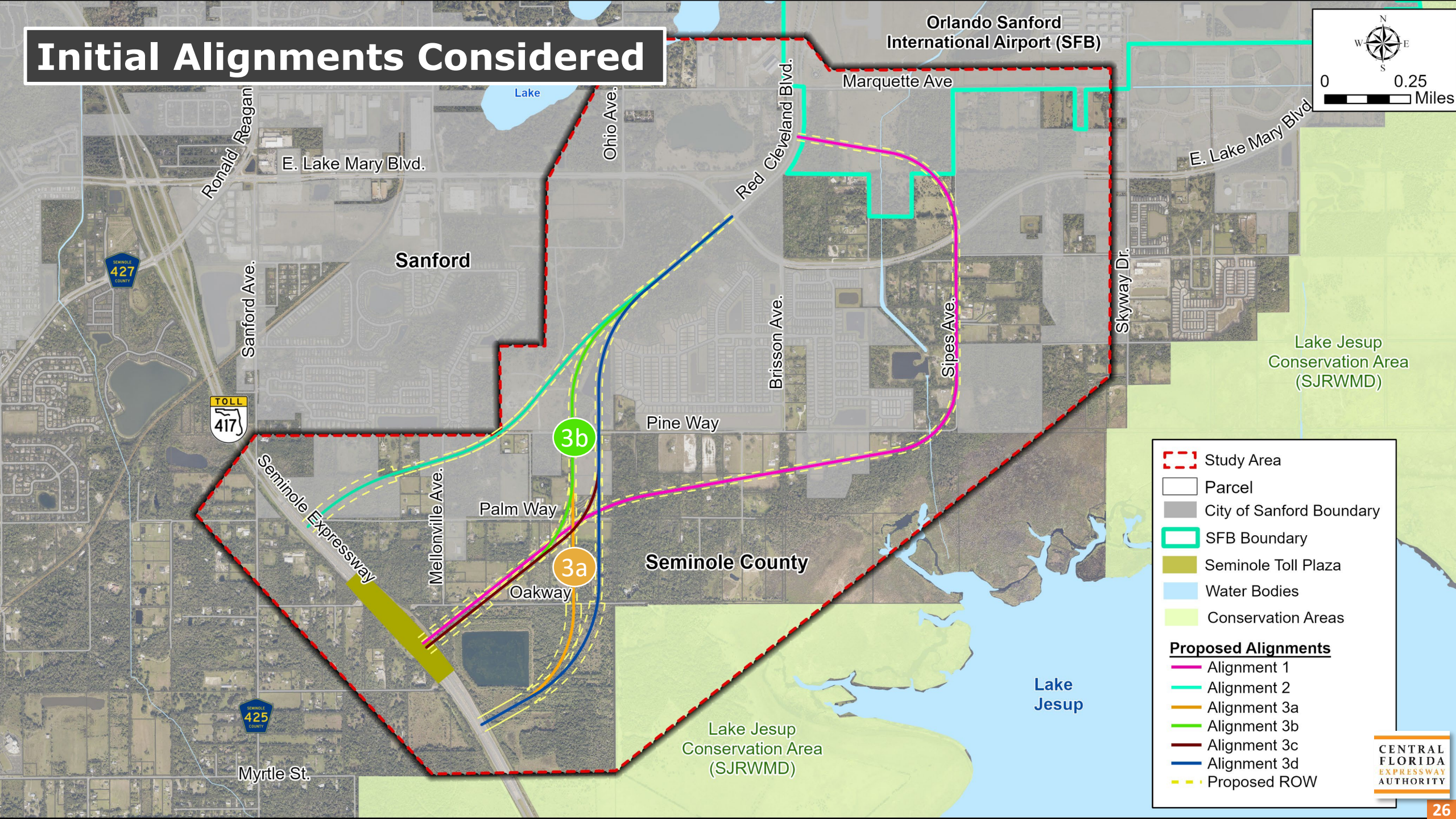
# Initial Alignments Considered



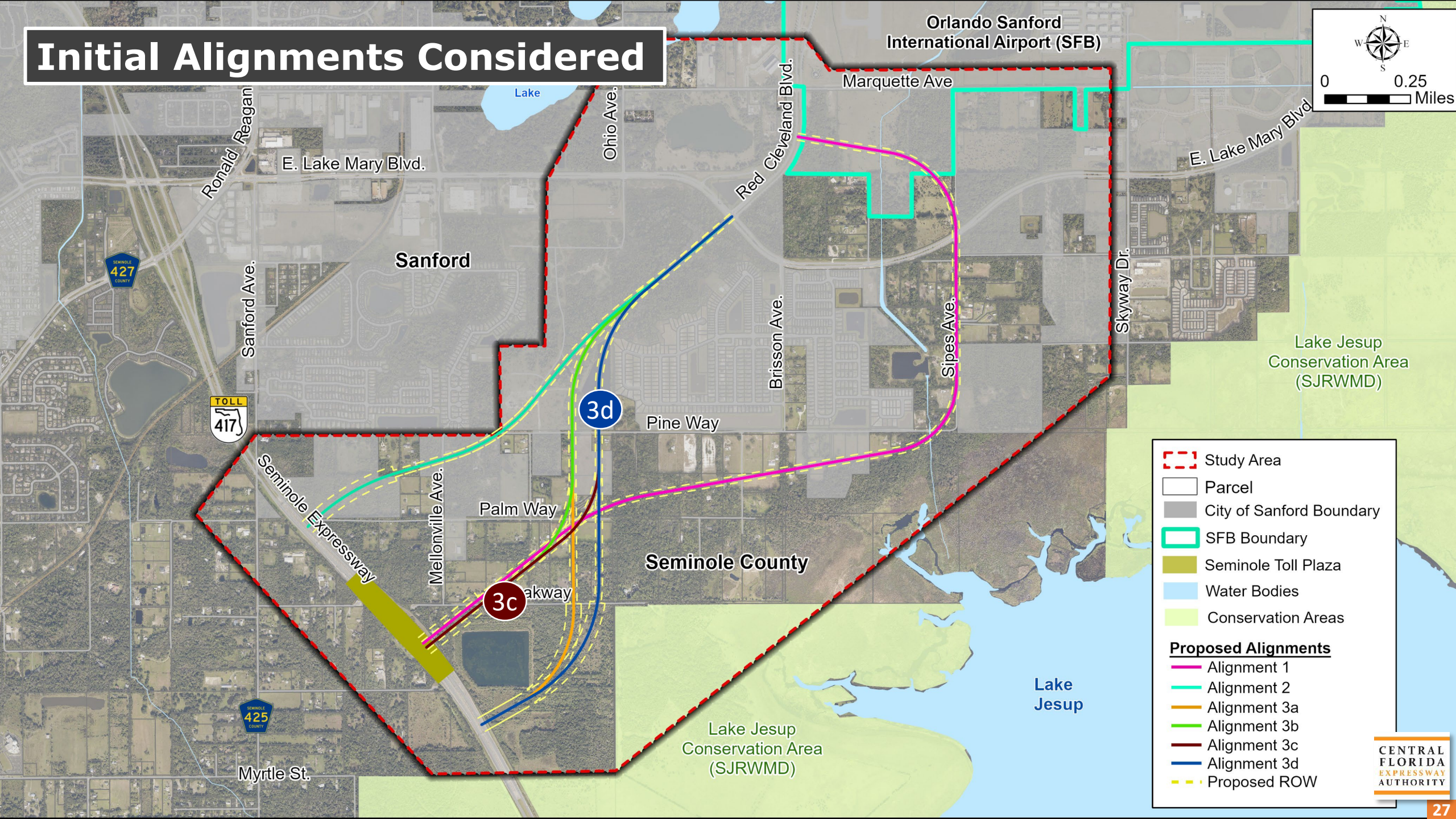
# Initial Alignments Considered



# Initial Alignments Considered



# Initial Alignments Considered



# Agency & Stakeholder Input

- ✓ Ongoing and Planned Adjacent Projects
- ✓ Planned Developments (Sanford and Seminole County)
- ✓ SJRWMD Conservation Easements and Criteria
- ✓ Alignment and Engineering Considerations
- ✓ Environmental Impacts
- ✓ Mobility Alternatives



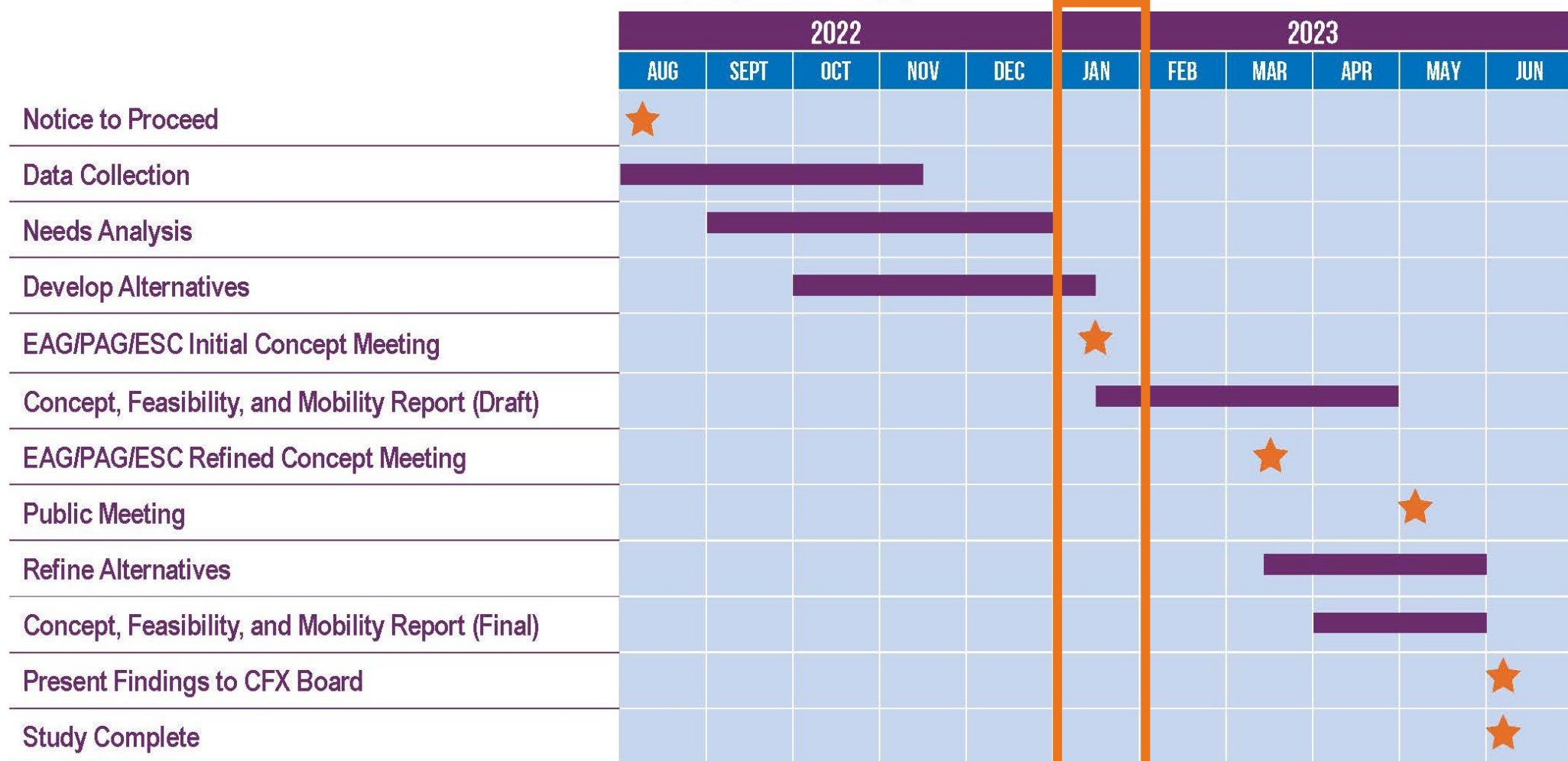
**St. Johns River**  
Water Management District



CITY OF  
**SANFORD**  
FLORIDA

# CF&M Schedule

(Subject to Change)



# Project Contact

**For more information contact:**

Shemir Wiles  
Public Involvement Coordinator  
407-802-3210  
[ConceptStudies@CFXway.com](mailto:ConceptStudies@CFXway.com)

CFX web address:  
[www.CFXway.com](http://www.CFXway.com)  
Shortened study web address:  
<http://bit.ly/SR417AirportConnector>



CENTRAL  
FLORIDA  
EXPRESSWAY  
AUTHORITY

THANK YOU!