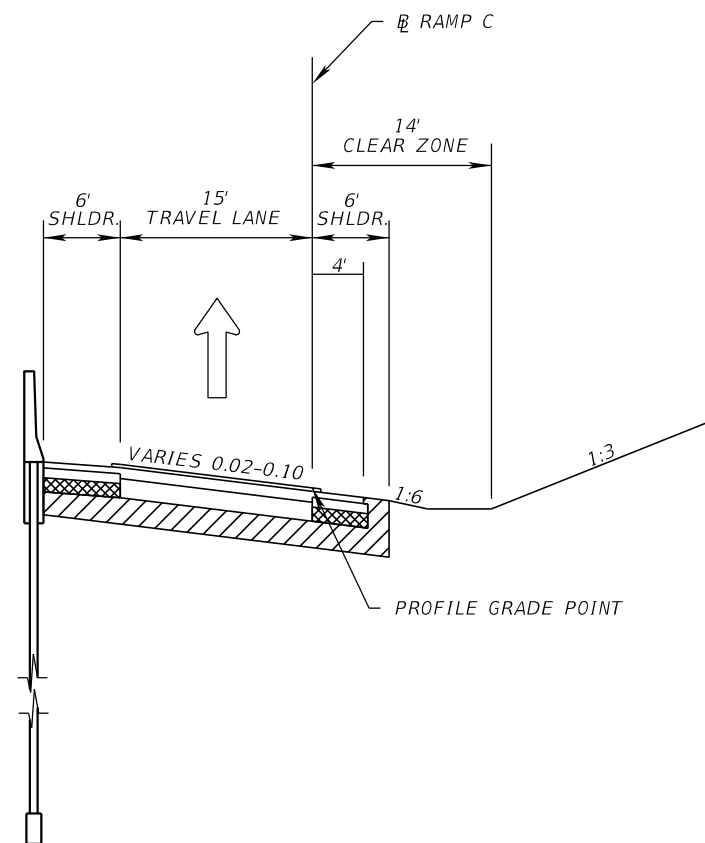
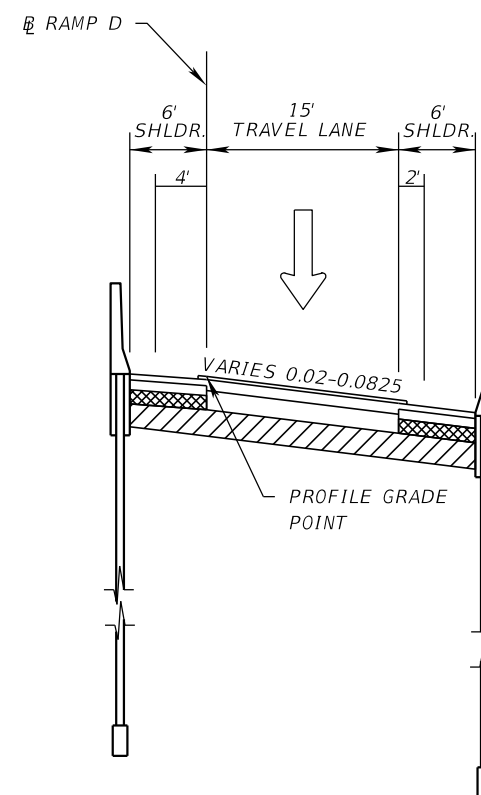


12/8/2022 8:23:55 AM U:\CFX\001844\Task01\_429-309\_Binion Rd IC\429-309\Roadway\TYP5RD01.dgn



TYPICAL SECTION 1  
RAMP C

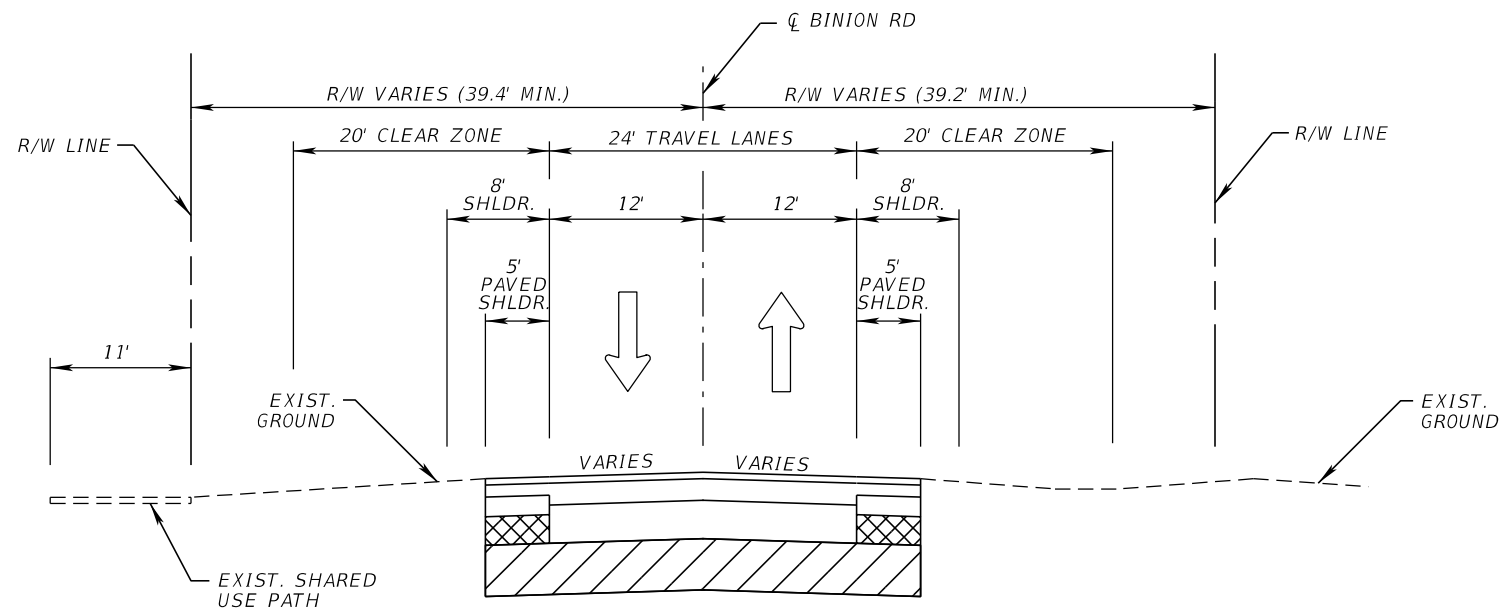
STA. 1568+95 TO STA. 1580+00  
DESIGN SPEED = 45 MPH  
 $e = 0.100$



TYPICAL SECTION 2  
RAMP D

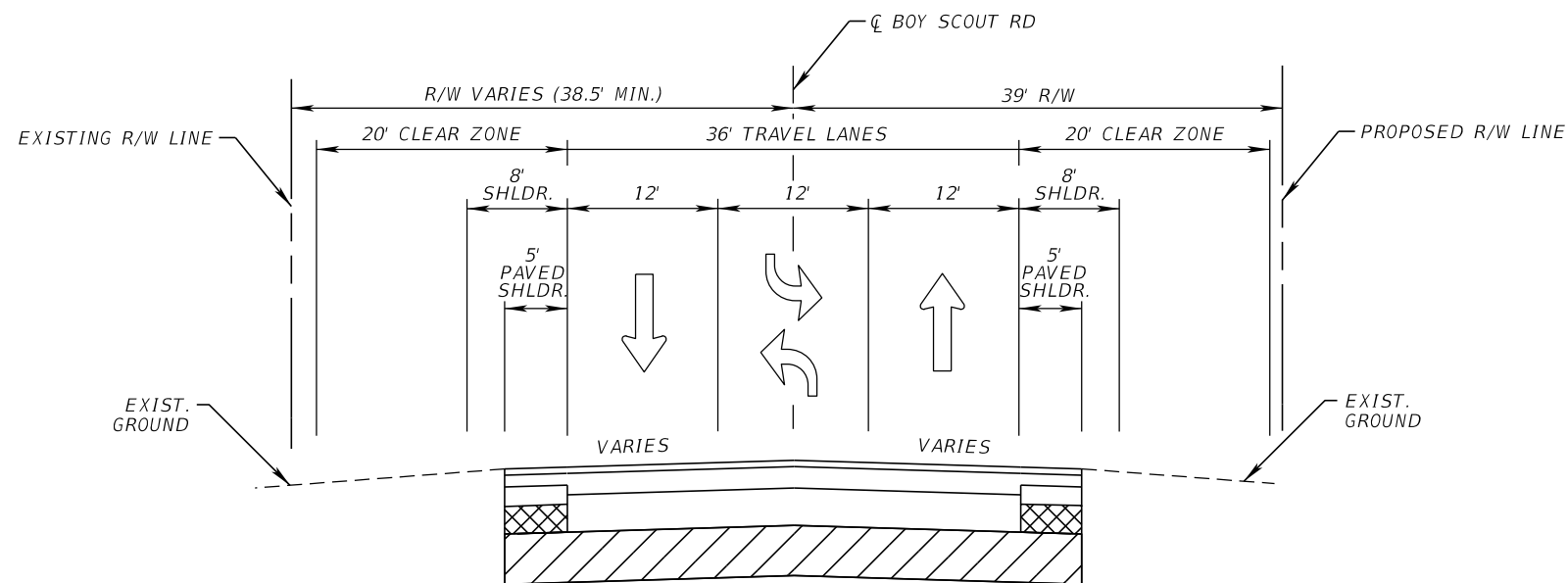
STA. 2565+21 TO STA. 2592+20  
DESIGN SPEED = 40 MPH  
 $e = 0.0825$

REVISIONS				BYRON D. SPRAGUE JR., P.E. P.E. LICENSE NUMBER 70949 THE BALMORAL GROUP 165 LINCOLN AVENUE WINTER PARK, FL 32789	SR 429 INTERCHANGE AT BINION ROAD		<b>CENTRAL FLORIDA EXPRESSWAY AUTHORITY</b>	TYPICAL SECTIONS	SHEET NO.
DATE	DESCRIPTION	DATE	DESCRIPTION		ROAD NO.	PROJECT NO.			1
					SR 429	429-309			



TYPICAL SECTION 3  
BINION RD

STA. 154+39 TO STA. 164+57  
DESIGN SPEED = 50 MPH



TYPICAL SECTION 4  
BOY SCOUT RD

STA. 801+00 TO STA. 820+54  
DESIGN SPEED = 50 MPH

U:\CFX 001844\Task01\_429-309\_Binion Rd IC\429-309\Roadway\TYP5RD01.dgn  
 4:55:18 PM  
 1/27/2023  
 Elasley

REVISIONS			
DATE	DESCRIPTION	DATE	DESCRIPTION

BYRON D. SPRAGUE JR., P.E.  
 P.E. LICENSE NUMBER 70949  
 THE BALMORAL GROUP  
 165 LINCOLN AVENUE  
 WINTER PARK, FL 32789

SR 429 INTERCHANGE  
AT BINION ROAD

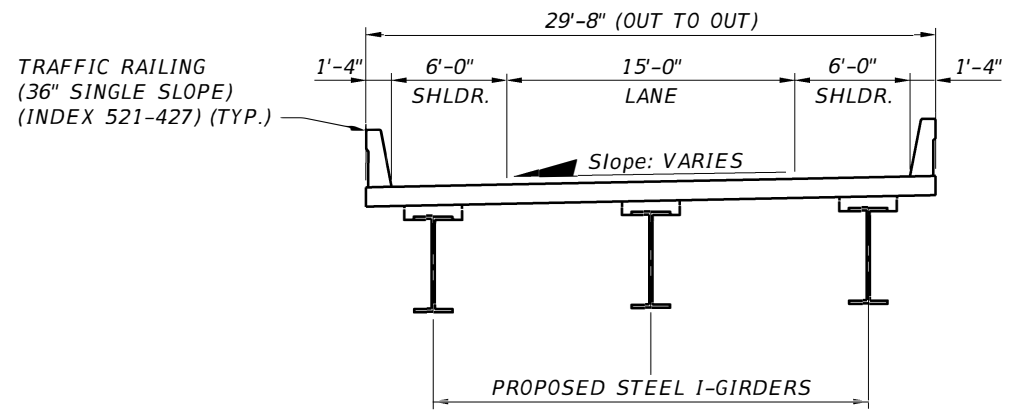
ROAD NO.	PROJECT NO.
SR 429	429-309

**CENTRAL  
 FLORIDA  
 EXPRESSWAY  
 AUTHORITY**

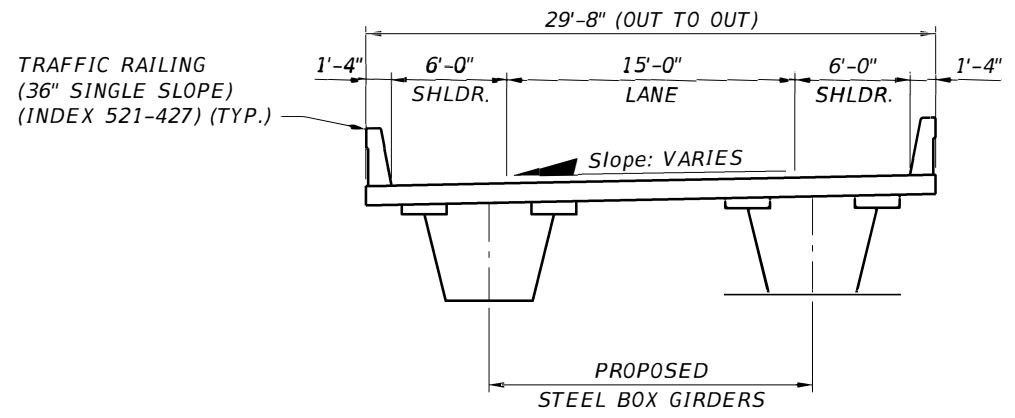
TYPICAL SECTIONS

SHEET NO.

2



**TYPICAL SECTION**



**TYPICAL SECTION**

C:\Users\andres.devia\OneDrive - KHY\Desktop\XSEC.dgn 3:59:55 PM 1/13/2023 andres.devia

REVISIONS						<b>CENTRAL FLORIDA EXPRESSWAY AUTHORITY</b>	<b>TYPICAL SECTIONS</b>	SHEET NO.  <u>3</u>
DATE	DESCRIPTION	DATE	DESCRIPTION					
					ROAD NO. SR 429	PROJECT NO. 429-309		