



# STATE ROAD 534 - PHASE 1

## FROM SR 417 TO NARCOOSSEE ROAD

### DESIGN DESCRIPTION

The Central Florida Expressway Authority (CFX) has begun to design Phase 1 of State Road 534 (SR 534), formerly known as the Osceola Parkway Extension. This project is part of the Osceola County Expressway Authority's (OCX) Master Plan adopted by CFX in 2016. SR 534 would form the northeastern section of the beltway around Osceola County.

The new limited access expressway will meet the increasing demand for additional east-west routes and support the residents and businesses in Central Florida while preparing for planned growth in southeast Orange and northeast Osceola counties.

For the complete background on the SR 534 – formerly known as the Osceola Parkway Extension – project planning and development history, please [visit the Project Development & Environment \(PD&E\) Study Re-Evaluation Page](#).

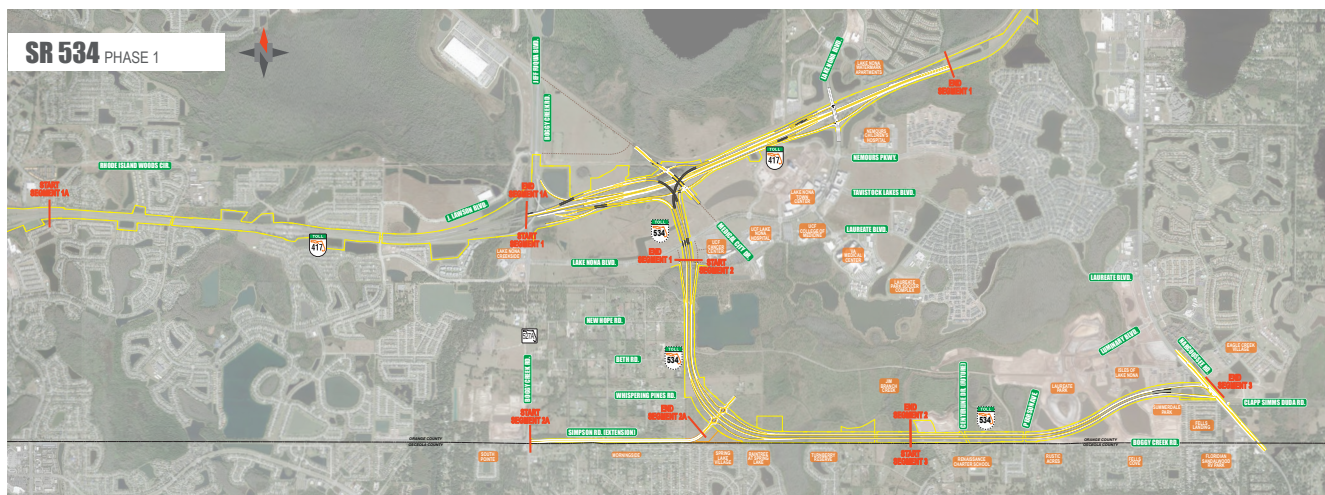
### WHAT TO EXPECT

Phase 1 of the project is divided into five design and construction segments. During the design phase, survey crews and other agents of the Central Florida Expressway Authority will be operating within the right-of-way along the project corridor.

### PROJECT GOALS

- Meet the demand of projected population and regional development growth.
- Prepare for anticipated job growth and enhance regional connectivity.
- Allow for an expressway corridor through the region.
- Increase movement of goods and services.
- Provide potential incorporation of transit options.
- Relieve congestion on local roadways.
- Sustain tourism and economic growth.

### DESIGN MAP (STATE ROAD 534: PHASE 1 PROJECT MAP)





# STATE ROAD 534 - PHASE 1

## FROM SR 417 TO NARCOOSSEE ROAD



**DESIGN MAP** (SEGMENTS 1A AND 1 – SR 417 FROM EAST OF LANDSTAR BOULEVARD TO LAKE NONA BOULEVARD AND FROM SR 417 SOUTH TO LAUREATE BOULEVARD)

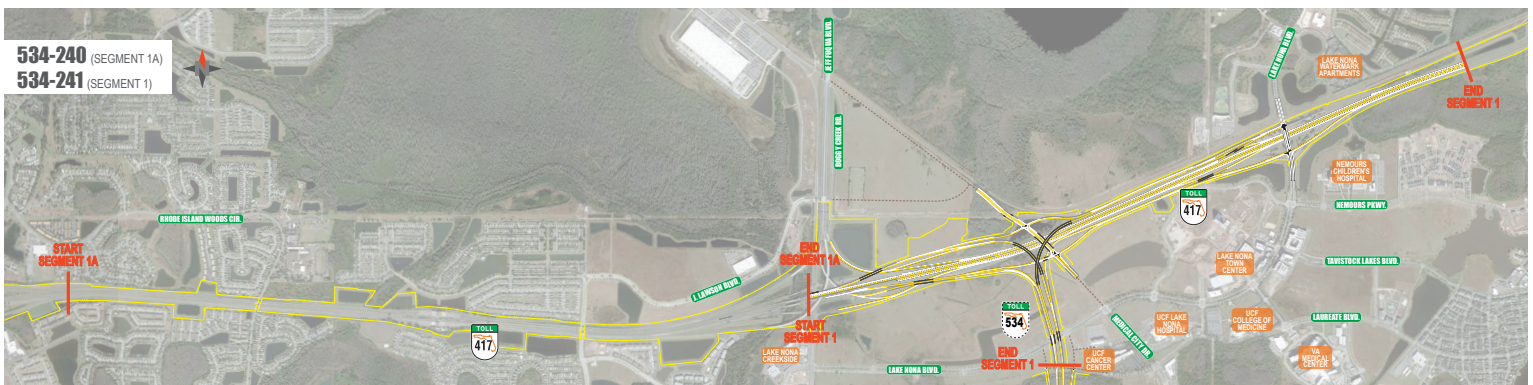
The project will tie into recent SR 417 capacity improvements and includes the addition of a new interchange east of Boggy Creek Road connecting SR 417 and SR 534 and extending SR 534 south to Laureate Boulevard. This project also includes extending Medical City Drive north over SR 417 and adding a full interchange to provide an additional access point to SR 417 from Lake Nona.

### QUICK FACTS

**Design Start:**  
May 2023

**Anticipated Design Completion:**  
Fall 2025

**Anticipated Construction Start:**  
Spring 2026



**CENTRAL  
FLORIDA  
EXPRESSWAY  
AUTHORITY**



Public participation is solicited without regard to race, color, national origin, age, sex, religion, disability or family status.  
Para más información en español acerca del proyecto, por favor comuníquese con Tiany Sousa al 407.636.0209 o por correo electrónico a [Tiany.Sousa@qcausa.com](mailto:Tiany.Sousa@qcausa.com).





# STATE ROAD 534 - PHASE 1

## FROM SR 417 TO NARCOOSSEE ROAD



### DESIGN MAP (SEGMENTS 2A AND 2 – SIMPSON ROAD EXTENSION & SR 534 FROM LAUREATE BOULEVARD TO THE EAST OF JIM BRANCH CREEK)

The project will extend SR 534 from Laureate Boulevard to east of Jim Branch Creek and includes a half interchange at Laureate Boulevard. In addition, this section incorporates a 1.5-mile extension of Simpson Road from Boggy Creek Road to SR 534 and will feature a full interchange at SR 534.

### ⚡ QUICK FACTS

**Design Start:**  
May 2023

**Anticipated Design Completion:**  
Spring 2025

**Anticipated Construction Start:**  
Late 2025



CENTRAL  
FLORIDA  
EXPRESSWAY  
AUTHORITY



Public participation is solicited without regard to race, color, national origin, age, sex, religion, disability or family status.  
Para más información en español acerca del proyecto, por favor comuníquese con Tiany Sousa al 407.636.0209 o por correo electrónico a [Tiany.Sousa@qcausa.com](mailto:Tiany.Sousa@qcausa.com).



# STATE ROAD 534 - PHASE 1

## FROM SR 417 TO NARCOOSSEE ROAD



### DESIGN MAP (SEGMENT 3 – EAST OF JIM BRANCH CREEK TO NARCOOSSEE ROAD)

The design will extend SR 534 east of Jim Branch Creek to Narcoossee Road. It features 2.2 miles of new lanes in each direction, including interchange ramps and enhancements to Narcoossee Road and the realignment of Clapp Simms Duda Road.

### ⚡ QUICK FACTS

**Design Start:**  
January 2023

**Anticipated Design Completion:**  
January 2025

**Anticipated Construction Start:**  
Summer 2025



### For more information:



407-383-5817



[Construction@CFXway.com](mailto:Construction@CFXway.com)



[www.CFXway.com](http://www.CFXway.com)



[@DriveEPASS](https://twitter.com/DriveEPASS)

**CENTRAL  
FLORIDA  
EXPRESSWAY  
AUTHORITY**



The regional Central Florida Expressway Authority is responsible for the planning, design, construction, operation and maintenance of a 125-mile limited-access expressway system to serve the five-county region. CFX's system includes SR 408 (Spessard L. Holland East-West Expressway), SR 528 (Martin Andersen Beachline Expressway), SR 417 (Central Florida GreeneWay), SR 429 (Daniel Webster Western Beltway), SR 414 (John Land Apopka Expressway), SR 429 (Wekiva Parkway), SR 538 (Poinciana Parkway), State Road 453 and State Road 451.

Central Florida Expressway Authority: 4974 ORL Tower Road, Orlando, FL 32807  
Phone: 407.690.5000 | Fax: 407.690.5011 | Email: [construction@cfxway.com](mailto:construction@cfxway.com)