



# **SR 417 (Seminole Expressway) to Orlando Sanford International Airport Connector Concept, Feasibility, and Mobility Study**

Nicole Gough, Dewberry  
Sunserea Gates, VHB

**— May 17, 2023 —**

# SR 417 to Orlando Sanford Airport Connector

1 of 50 Stop presenting

TO MUTE  
OR  
UNMUTE YOURSELF

**CENTRAL  
FLORIDA  
EXPRESSWAY  
AUTHORITY**

**SR 417 (Seminole Expressway) to Orlando Sanford International  
Airport Connector  
Concept, Feasibility, and Mobility Study**

Nicole Gough, Dewberry  
Sunserea Gates, VHB

— May 17, 2023 —



# SR 417 to Orlando Sanford Airport Connector

Request control

1

Leave

CENTRAL  
FLORIDA  
EXPRESSWAY  
AUTHORITY

TO RAISE YOUR HAND  
TO SPEAK

**SR 417 (Seminole Expressway) to Orlando Sanford International  
Airport Connector**  
Concept, Feasibility, and Mobility Study  
Nicole Gough, Dewberry  
Sunserea Gates, VHB  
— May 17, 2023 —

CS

Colleen Shea

SD

Dalton, Sunserea/ORL

KP

Kathy Putnam

MB

Participants

type a name

Mute all

In this meeting (4)

MB

Baker, Michael

KP

Kathy Putnam

Organizer  
Outside your organization

CS

Colleen Shea

Outside your organization

SD

Dalton, Sunserea/ORL

Others from chat (1)

JD

Dean, Jessica

# SR 417 to Orlando Sanford Airport Connector

The screenshot shows a Zoom meeting in progress. The main video area displays a presentation slide with the Central Florida Expressway Authority logo and the title "SR 417 (Seminole Expressway) to Orlando Sanford International Airport Connector Concept, Feasibility, and Mobility Study". The slide also lists the presenter as Nicole Gough, Dewberry, Sunserea Gates, VHB, and the date as May 17, 2023. The Zoom interface includes a top toolbar with icons for "Request control", chat, and other functions. A "Meeting chat" panel on the right shows a list of participants and a chat history. A chat box at the bottom right contains the text "When will they be posted?". A white callout box with the text "USE THE CHAT BOX TO ASK ANY QUESTIONS" is overlaid on the bottom right of the screen. The bottom of the screen shows the names of participants: Colleen Shea and Dalton, Sunserea/ORL.

**CENTRAL FLORIDA EXPRESSWAY AUTHORITY**

**SR 417 (Seminole Expressway) to Orlando Sanford International Airport Connector**  
**Concept, Feasibility, and Mobility Study**

Nicole Gough, Dewberry  
Sunserea Gates, VHB

— May 17, 2023 —

**USE THE CHAT BOX TO ASK ANY QUESTIONS**

**Meeting chat**

This meeting chat is muted. Settings

Kathy Putnam renamed the meeting to 414-227 EAG/PAG first practice.

Colleen Shea joined the meeting.

Today

8:56 AM Meeting started

Evans, Carnot joined the meeting.

Gough, Nicole joined the meeting.

Dean, Jessica joined the meeting.

Baker, Michael joined the meeting.

Dalton, Sunserea/ORL joined the meeting.

JD Dean, Jessica 10:04 AM  
Will slides be provided after this presentation?

When will they be posted?

Colleen Shea

Dalton, Sunserea/ORL

**CENTRAL FLORIDA EXPRESSWAY AUTHORITY**



# SR 417 to Orlando Sanford Airport Connector

1 of 50 Stop presenting

CENTRAL  
FLORIDA  
EXPRESSWAY  
AUTHORITY

**SR 417 (Seminole Expressway) to Orlando Sanford International  
Airport Connector  
Concept, Feasibility, and Mobility Study**

Nicole Gough, Dewberry  
Sunserea Gates, VHB

— May 17, 2023 —

NOTE THE  
SLIDE NUMBER

# SR 417 to Orlando Sanford Airport Connector

Request control

Leave

CENTRAL  
FLORIDA  
EXPRESSWAY  
AUTHORITY

TO VIEW THE  
PARTICIPANTS

SR 417 (Seminole Expressway) to Orlando Sanford International  
Airport Connector  
Concept, Feasibility, and Mobility Study

Nicole Gough, Dewberry  
Sunserea Gates, VHB

— May 17, 2023 —

In this meeting (4)

Mute all

MB Baker, Michael

CS Colleen Shea  
Outside your organization

SD Dalton, Sunserea/ORL

KP Kathy Putnam  
Organizer  
Outside your organization

Others from chat (1)

JD Dean, Jessica

CS Colleen Shea

SD Dalton, Sunserea/ORL

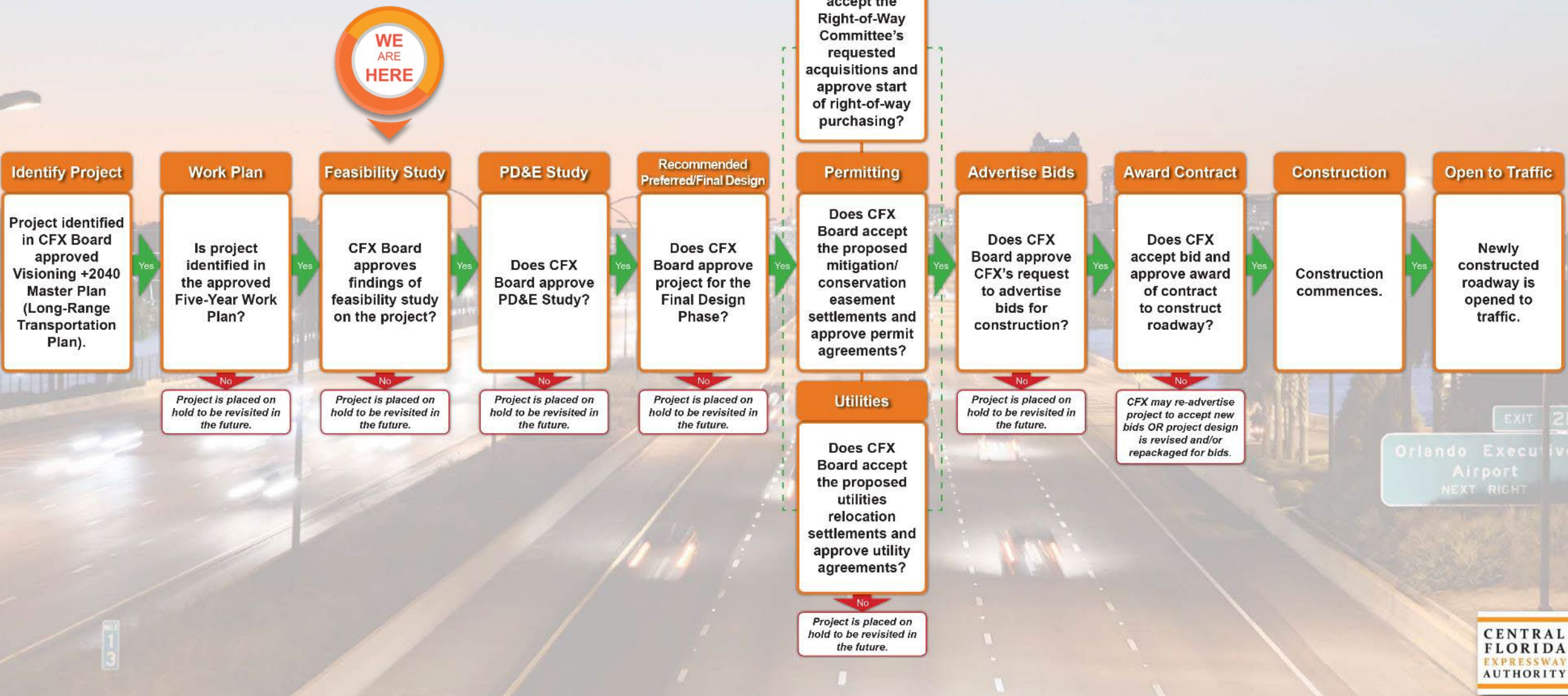
KP Kathy Putnam

MB



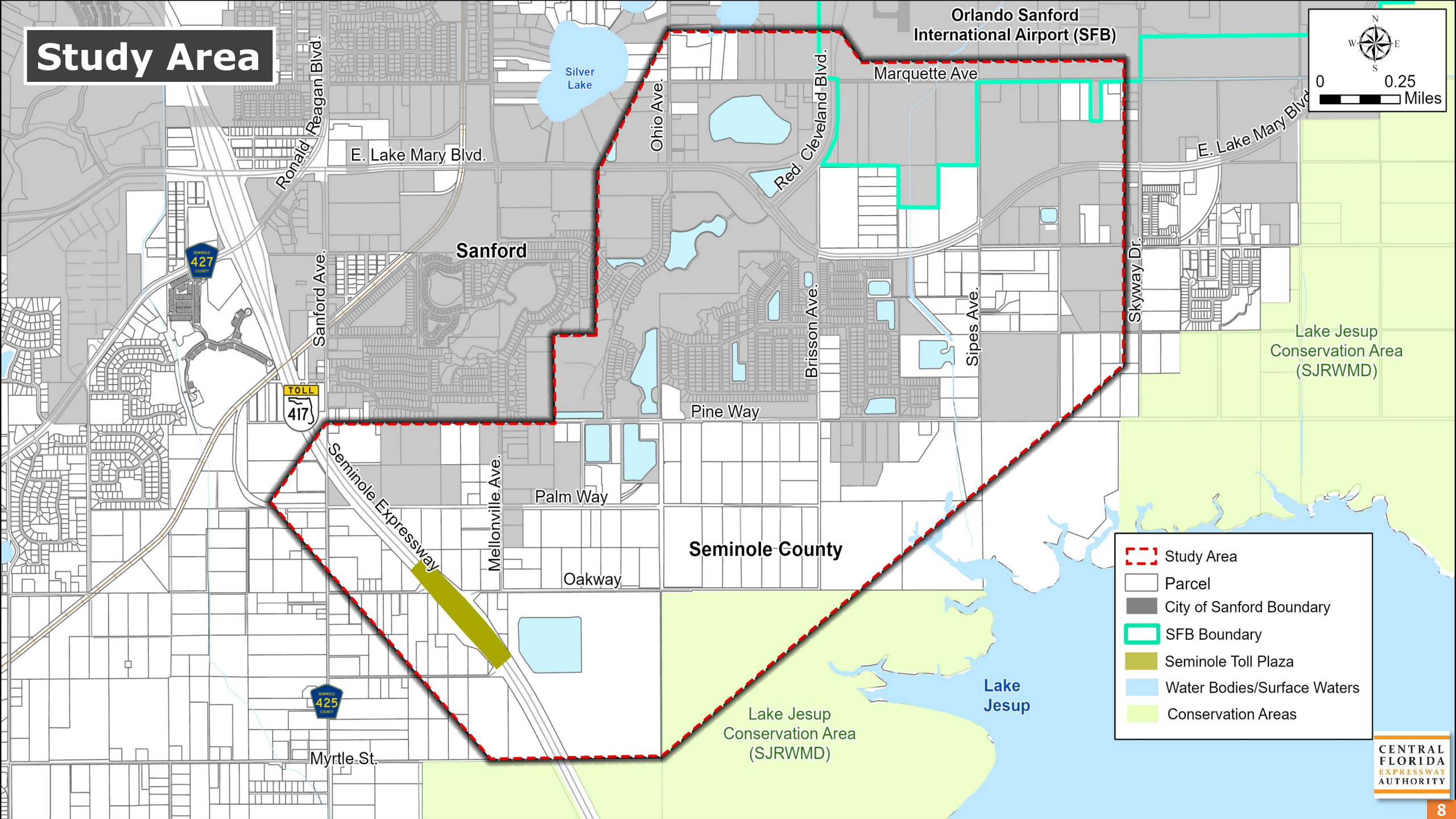
# PROJECT DEVELOPMENT PROCESS

New Alignment Expansion Projects





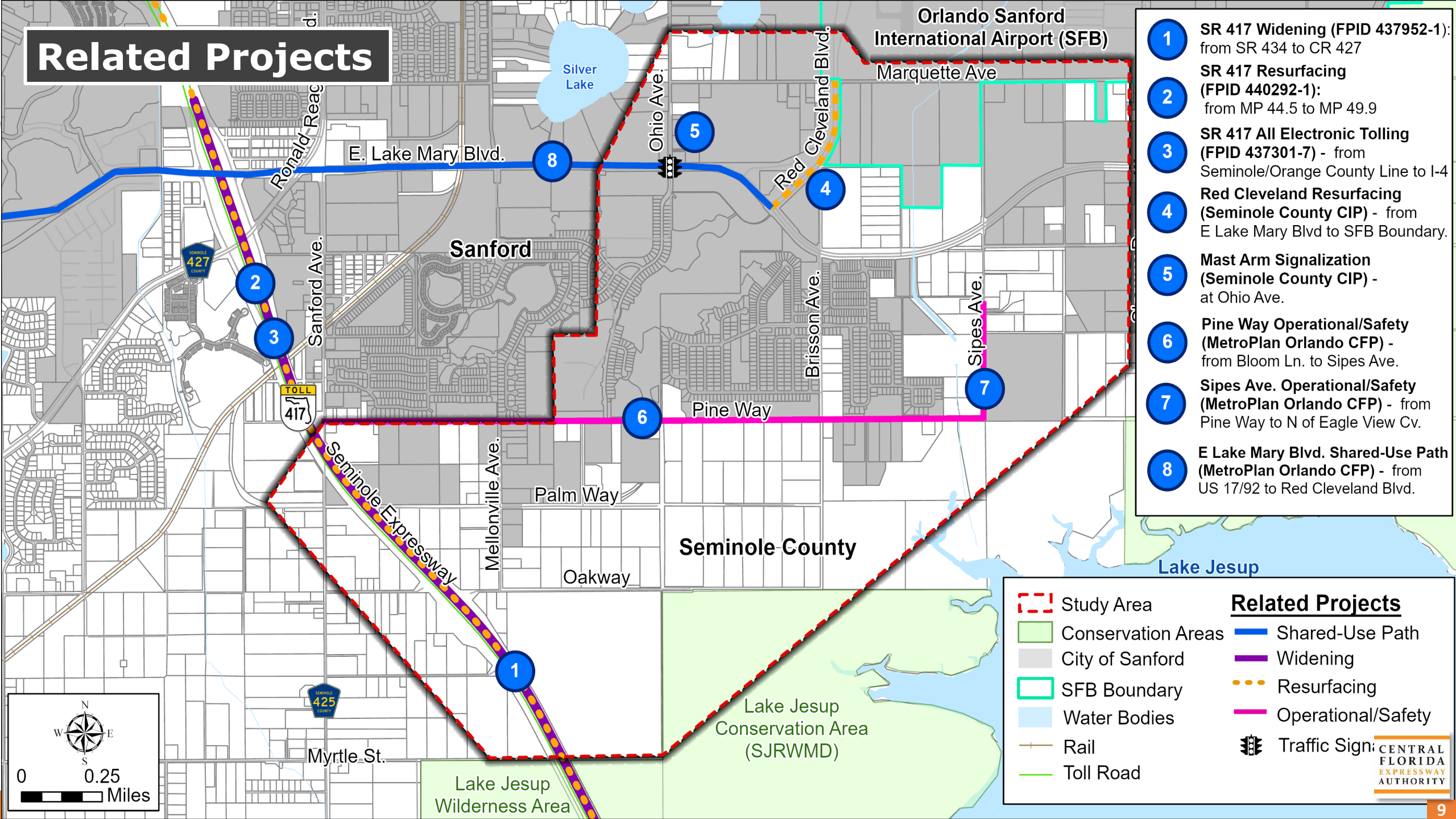
# Study Area



- Study Area
- Parcel
- City of Sanford Boundary
- SFB Boundary
- Seminole Toll Plaza
- Water Bodies/Surface Waters
- Conservation Areas



# Related Projects



- 1 SR 417 Widening (FPID 437952-1): from SR 434 to CR 427
- 2 SR 417 Resurfacing (FPID 440292-1): from MP 44.5 to MP 49.9
- 3 SR 417 All Electronic Tolling (FPID 437301-7) - from Seminole/Orange County Line to I-4
- 4 Red Cleveland Resurfacing (Seminole County CIP) - from E Lake Mary Blvd to SFB Boundary.
- 5 Mast Arm Signalization (Seminole County CIP) - at Ohio Ave.
- 6 Pine Way Operational/Safety (MetroPlan Orlando CFP) - from Bloom Ln. to Sipes Ave.
- 7 Sipes Ave. Operational/Safety (MetroPlan Orlando CFP) - from Pine Way to N of Eagle View Cv.
- 8 E Lake Mary Blvd. Shared-Use Path (MetroPlan Orlando CFP) - from US 17/92 to Red Cleveland Blvd.

Study Area

Conservation Areas

City of Sanford

SFB Boundary

Water Bodies

Rail

Toll Road

### Related Projects

Shared-Use Path

Widening

Resurfacing

Operational/Safety

Traffic Sign

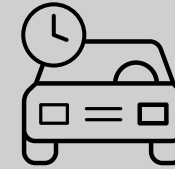
0

0.25

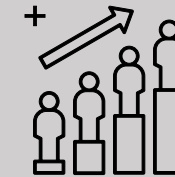
Miles

# Purpose and Need

- Existing congestion at SR 417 and CR 427/East Lake Mary Blvd. Interchange
- Socioeconomic Growth
  - Airport projected to serve 2.7M passengers (enplanements) by 2037 (91% increase)
  - Seminole County population growth 21% by 2050
  - 10 planned developments or 55% of study area vacant lands
- Anticipated 2050 Traffic Growth
  - 54% increase on East Lake Mary Blvd. west of Red Cleveland Blvd.
- SR 417 and CR 427/East Lake Mary Blvd. Interchange Traffic Volume
  - Potential Connector diverts 17,000 vehicles/day (in 2050)



**Relieves  
Constrained Local  
Roadways**



**Supports  
Socioeconomic  
Growth**



**Improves Regional  
Connectivity**



# Study Objectives

Identify Feasible Alternatives to provide a limited access connection within the study limits, including:

- Identify transportation mobility options
- Enhance direct access to the Orlando Sanford International Airport
- Enhance mobility for the area's growing population and economy
- Provide consistency with local plans and policies
- Promote regional connectivity
- Fulfill the recommendation of Seminole Board of County Commissioners to re-evaluate this corridor

# CF&M Evaluation Criteria

## Social Environment

- ❖ Residential
- ❖ Business
- ❖ Schools
- ❖ Churches
- ❖ Fire Stations
- ❖ Law Enforcement Facilities
- ❖ Cemeteries
- ❖ Approved and Planned Developments

## Physical Environment

- ❖ Noise Sensitive Areas
- ❖ Railroads
- ❖ Major Utilities
- ❖ Contamination Sites
- ❖ Hazardous Material Sites
- ❖ Industrial Sites
- ❖ Underground Fuel Tanks

## Natural Environment

- ❖ Wetlands
- ❖ Floodplains
- ❖ Protected Species
- ❖ Wildlife Habitat

## Cultural Environment

- ❖ Parks & Recreation
- ❖ Public Lands
- ❖ Conservation Areas
- ❖ Trails & Greenways
- ❖ Potential Archaeological Sites
- ❖ Potential Historic Resources



# Advisory Group Roles

## Environmental (EAG)

- Comprised of members representing environmental/government agencies and community/advocacy groups
- Members are invited by CFX to join
- Natural environment analysis
- Special advisory resource
- Input on potential environmental impact of project alternatives
- Local knowledge, issues and concerns regarding environmental impacts

## Project (PAG)

- Comprised of members representing government/transportation planning agencies and other key stakeholders
- Members are invited by CFX to join
- Mobility analysis
- Special advisory resource
- Input on project alternatives
- Local knowledge, issues and concerns

# Public and Agency Input

- ✓ Minimize proximity to Lake Jesup Conservation Area
- ✓ Avoid/Minimize impacts to SJRWMD conservation easements
- ✓ Review potential future wildlife connectivity
- ✓ Identify potential conservation mitigation opportunities
- ✓ Minimize wetland involvement at SR 417 interchange and consider elevated structures
- ✓ Avoid floodplain involvement and increased flooding
- ✓ Improve water quality
- ✓ Provide adequate stormwater management facilities and protect water resources
- ✓ Further evaluation of Alignment 2



**St. Johns River**  
Water Management District

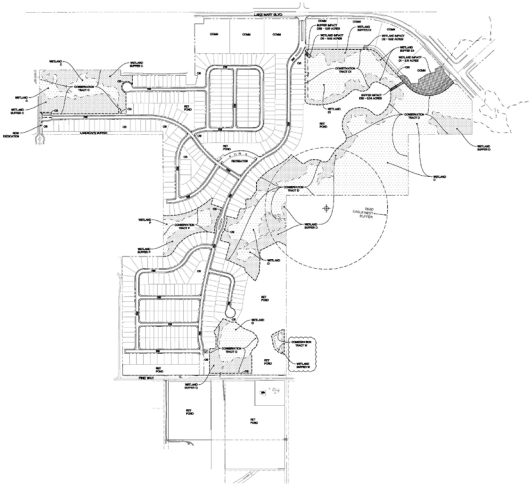


CITY OF  
**SANFORD**  
FLORIDA

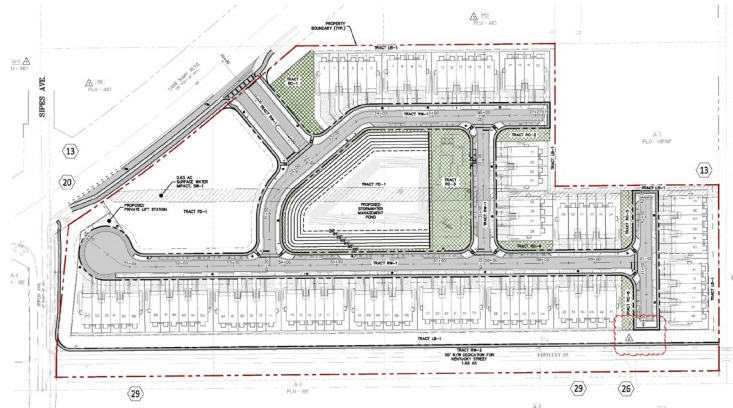


# Future Land Use Changes

Concorde



Skylar Crest



## Concorde

- 232.46 acres
- 421 single-family lots

## Skylar Crest

- 14.69 acres
- 94 townhomes

## Palmetto Pointe

- 39.76 acres
- 100 single-family lots

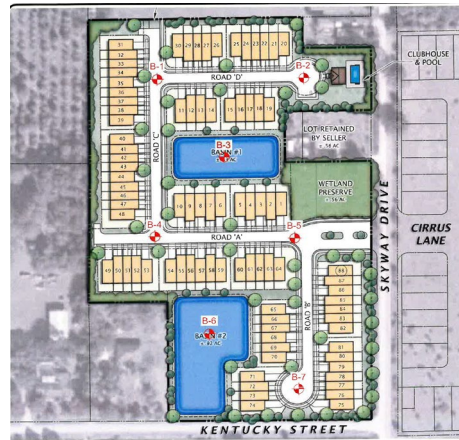
## Parkview Place – Phase 2

- 14.94 acres
- 85 townhomes

Palmetto Pointe



Parkview Place – Phase 2





# Sociocultural Constraints

## Planned Developments

## Vacant Parcel

## Agricultural Lands

Study Area

Parcel Boundary

SFB Boundary

City of Sanford Boundary

Water Bodies/Surface Waters

Seminole Toll Plaza

Existing Neighborhood

Trails

Residential

Vacant

Agriculture

Planned Development (Permitted)

Planned Development (Pending)

Trailhead

School

Sanford Army Reserve

Church

Boombah Sports Complex

Historic Resource Group

Historic Structure

**Existing Land Use (Sept. 2022)**

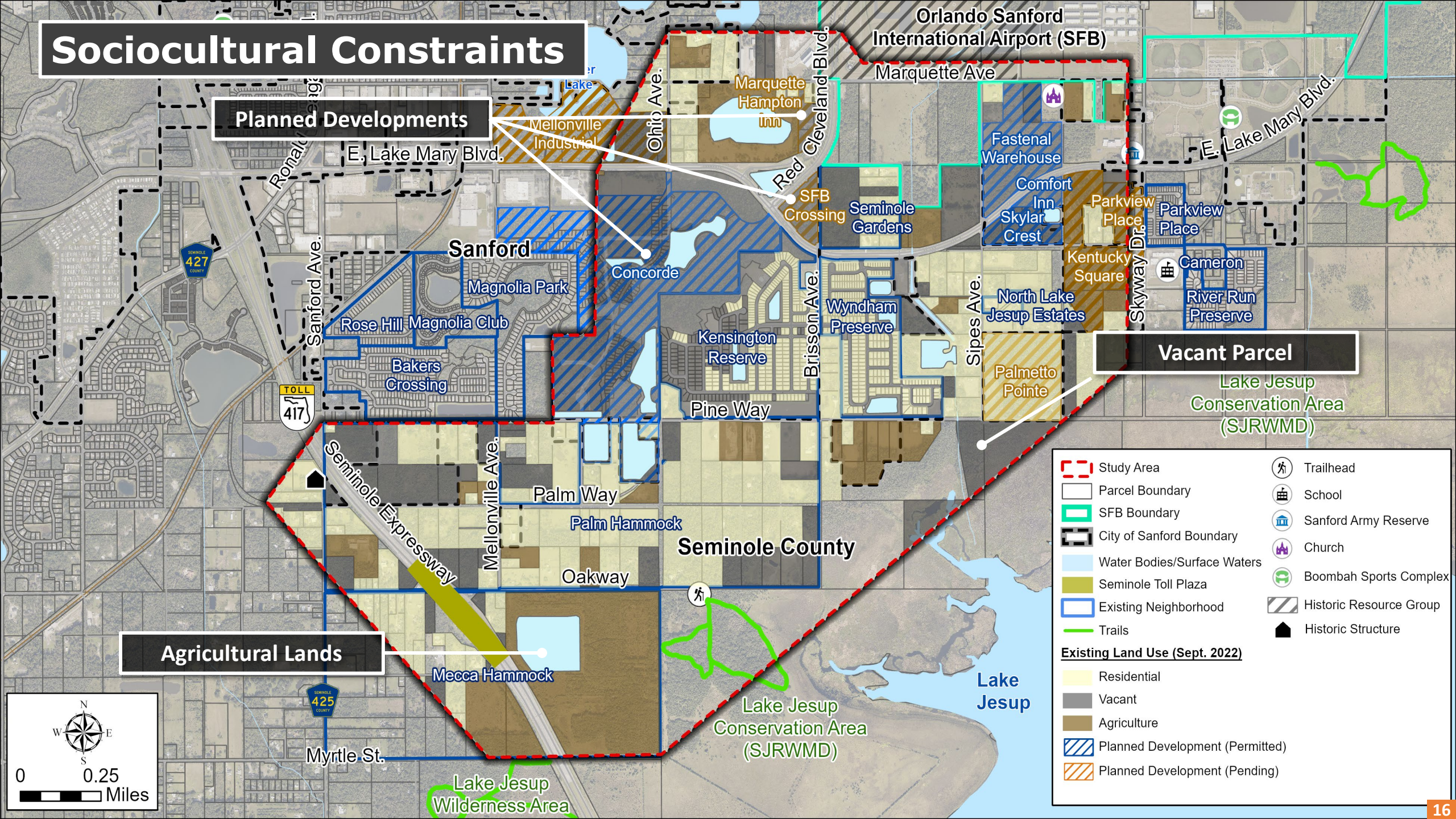
Residential

Vacant

Agriculture

Planned Development (Permitted)

Planned Development (Pending)





# Natural Constraints

Minimization (SJRWMD  
Conservation Easements)

Avoidance Areas (Public  
Lands/Conservation)

Seminole County

Orlando Sanford  
International Airport (SFB)

Marquette Ave

E. Lake Mary Blvd.

Lake Jesup  
Conservation Area  
(SJRWMD)

Lake Jesup

Lake Jesup  
Conservation Area  
(SJRWMD)

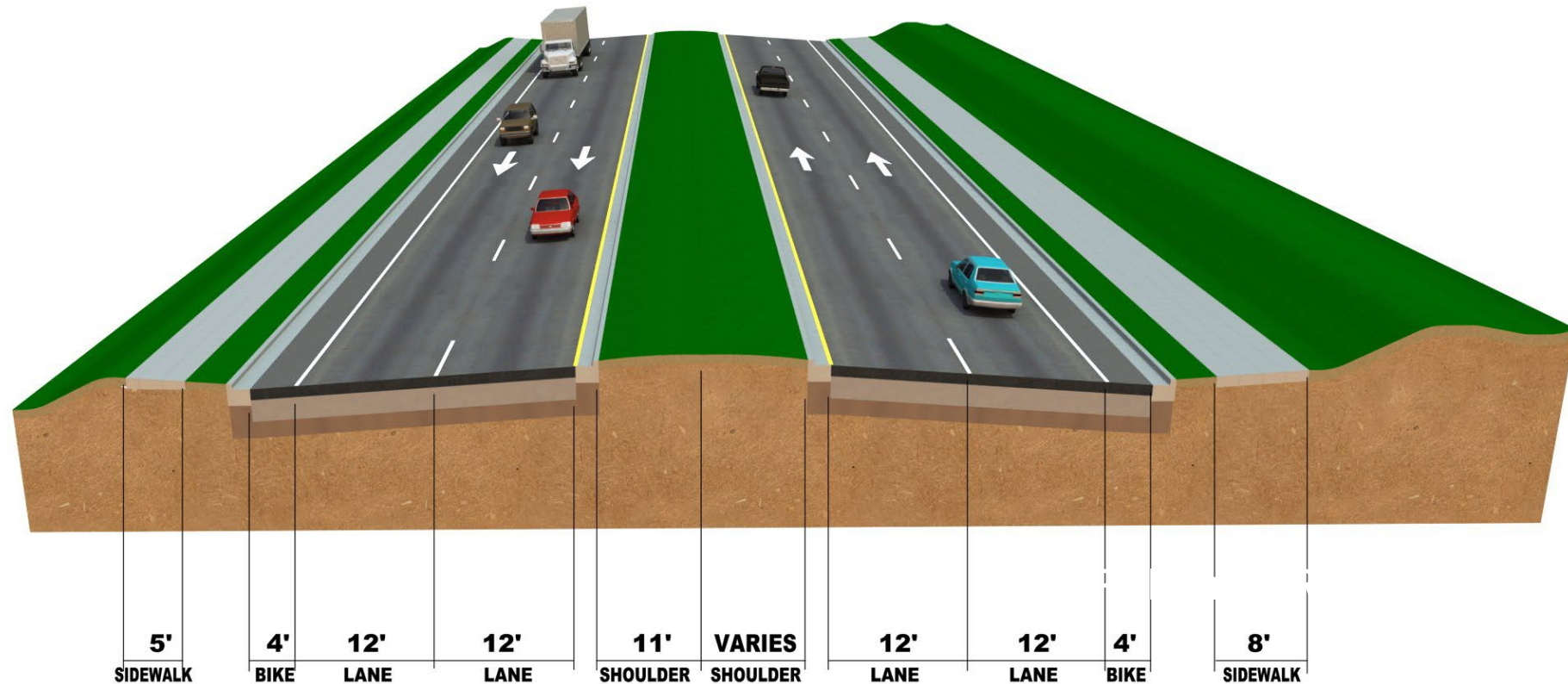
Lake Jesup  
Wilderness Area



0 0.25  
Miles



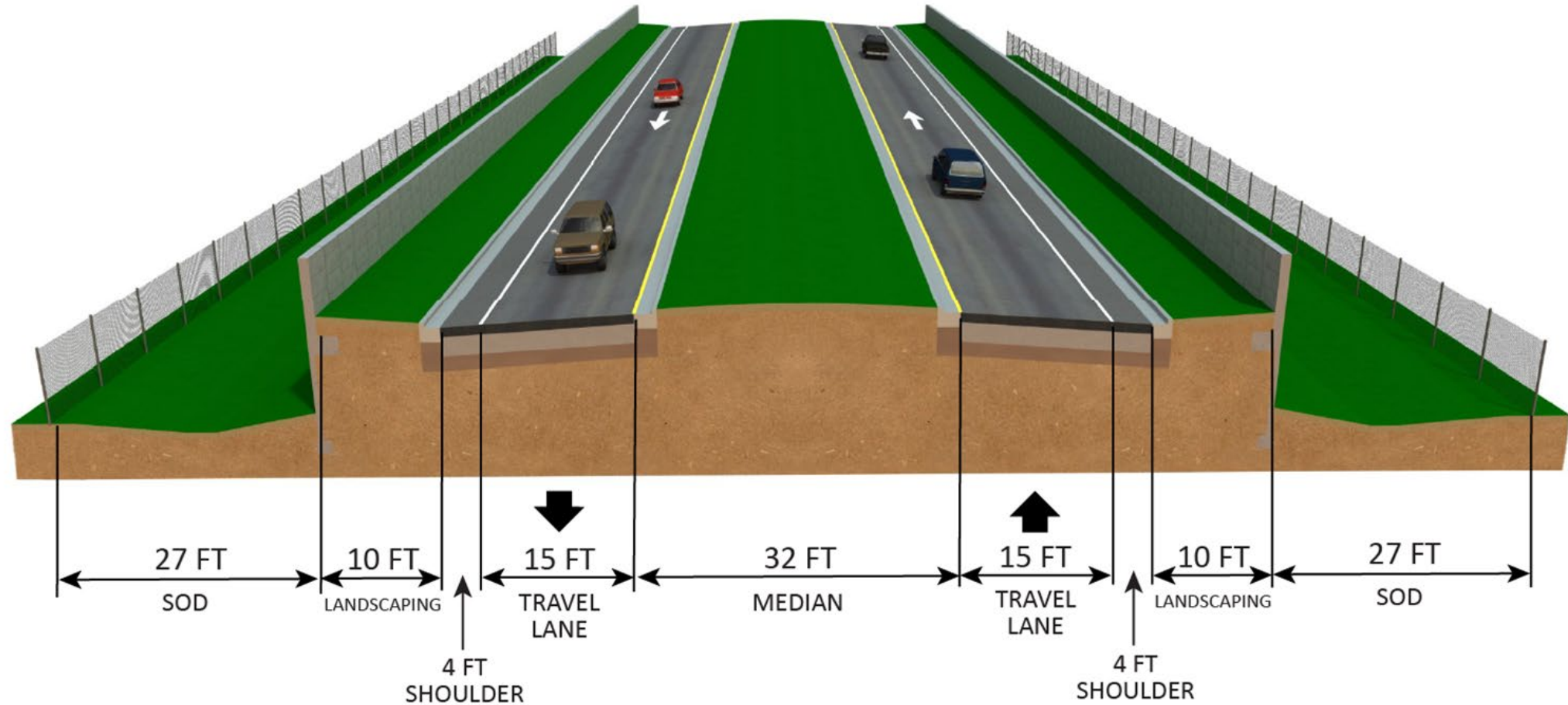
# East Lake Mary Blvd. Existing Typical Section



(from Ohio Avenue to Brisson Avenue)

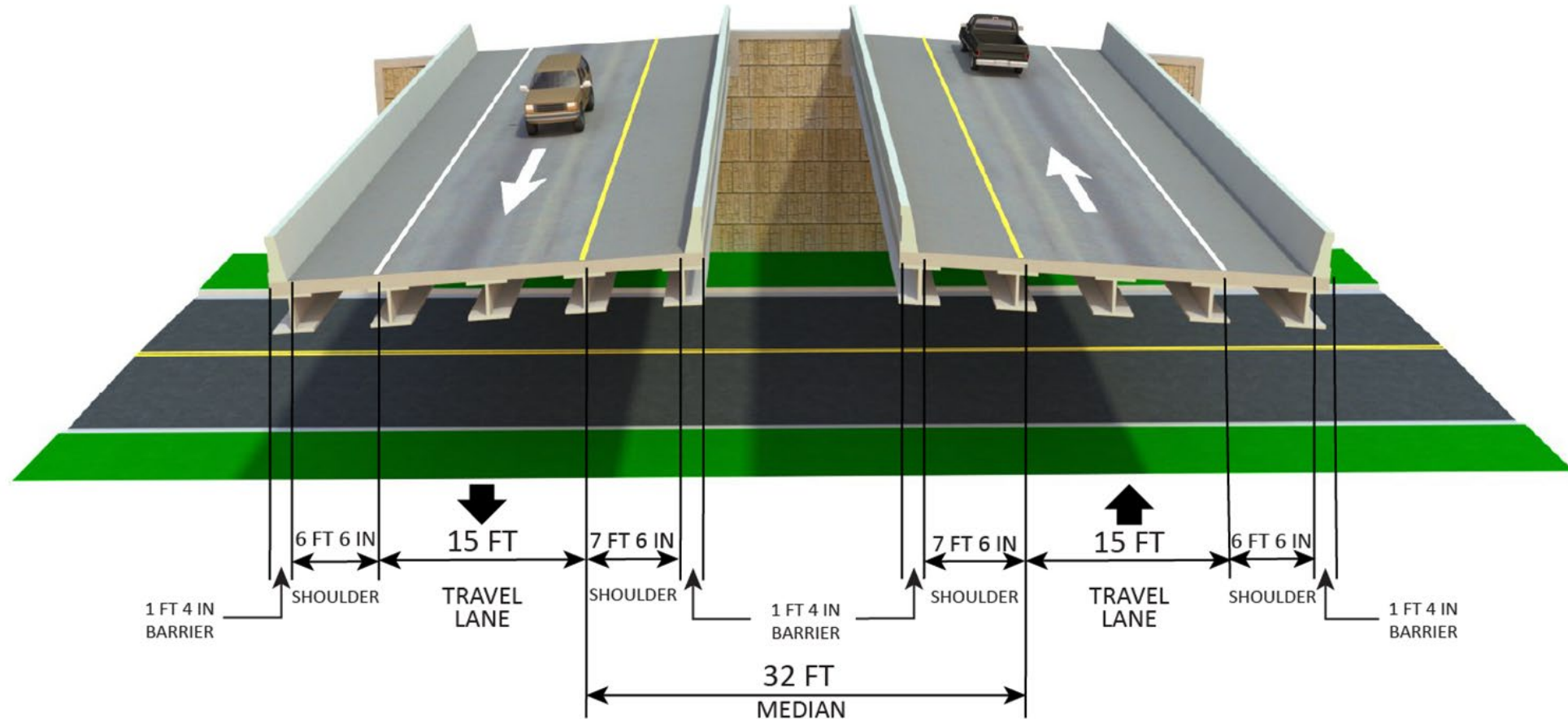


# Proposed Connector Typical Section (2-Lane)



Design Speed = 45 mph  
Approximate ROW = 150 feet

# Proposed Connector Bridge Typical Section



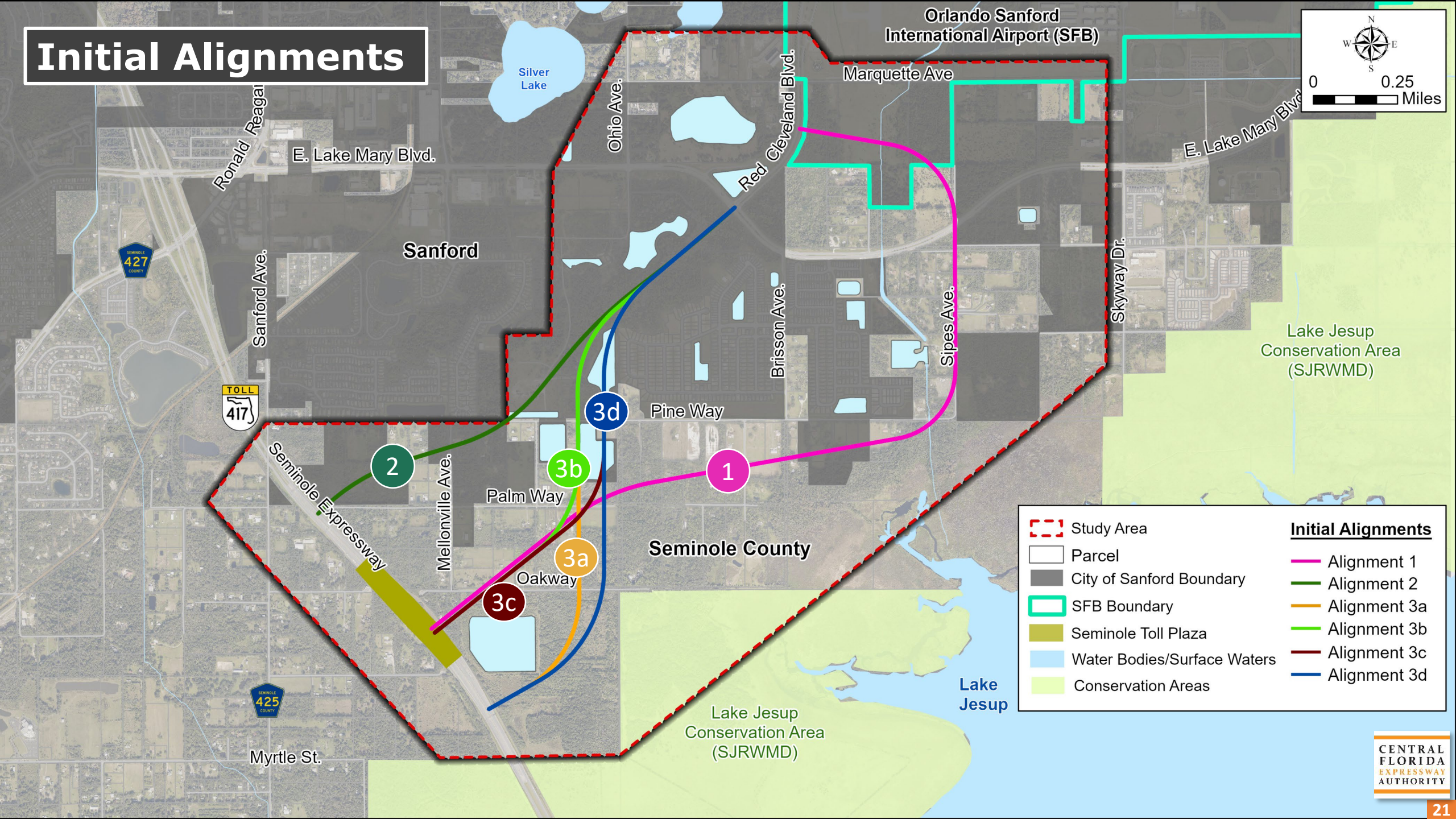
Typical is for local road crossings under 500 ft. in length

Design Speed = 45 mph

Approximate ROW = 77 feet & 8 inches

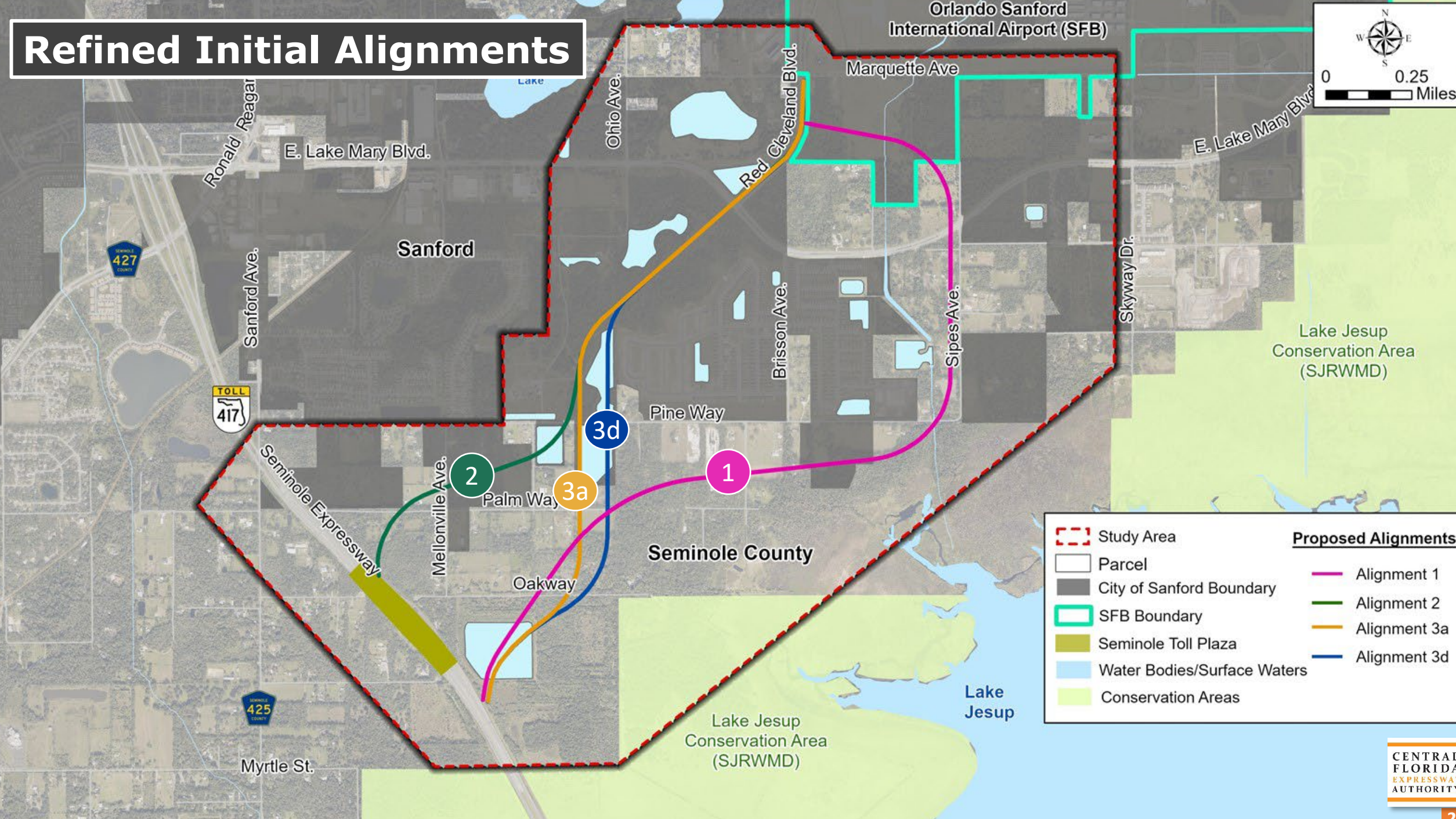


# Initial Alignments



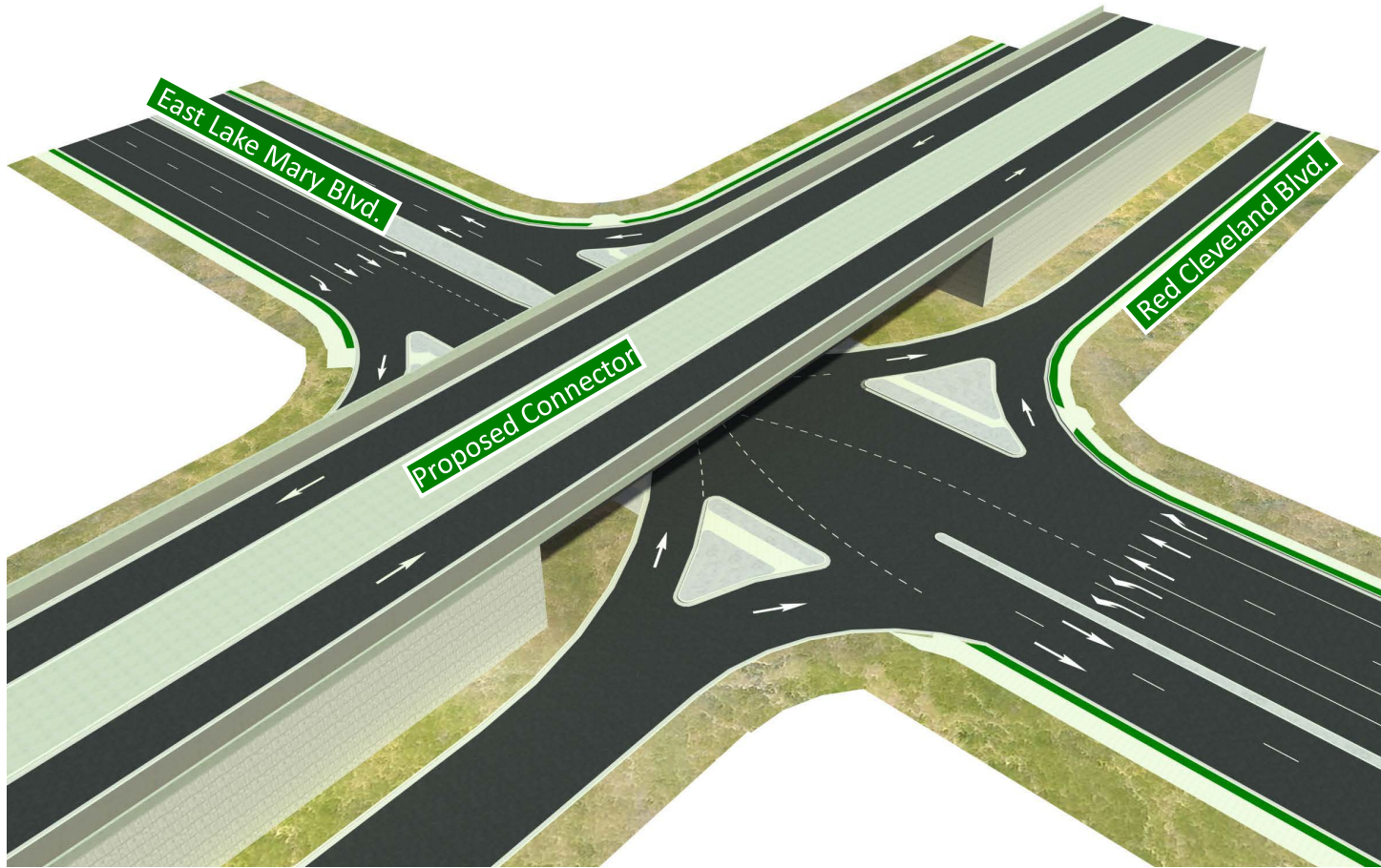


# Refined Initial Alignments





# Proposed Interchange at East Lake Mary Blvd.

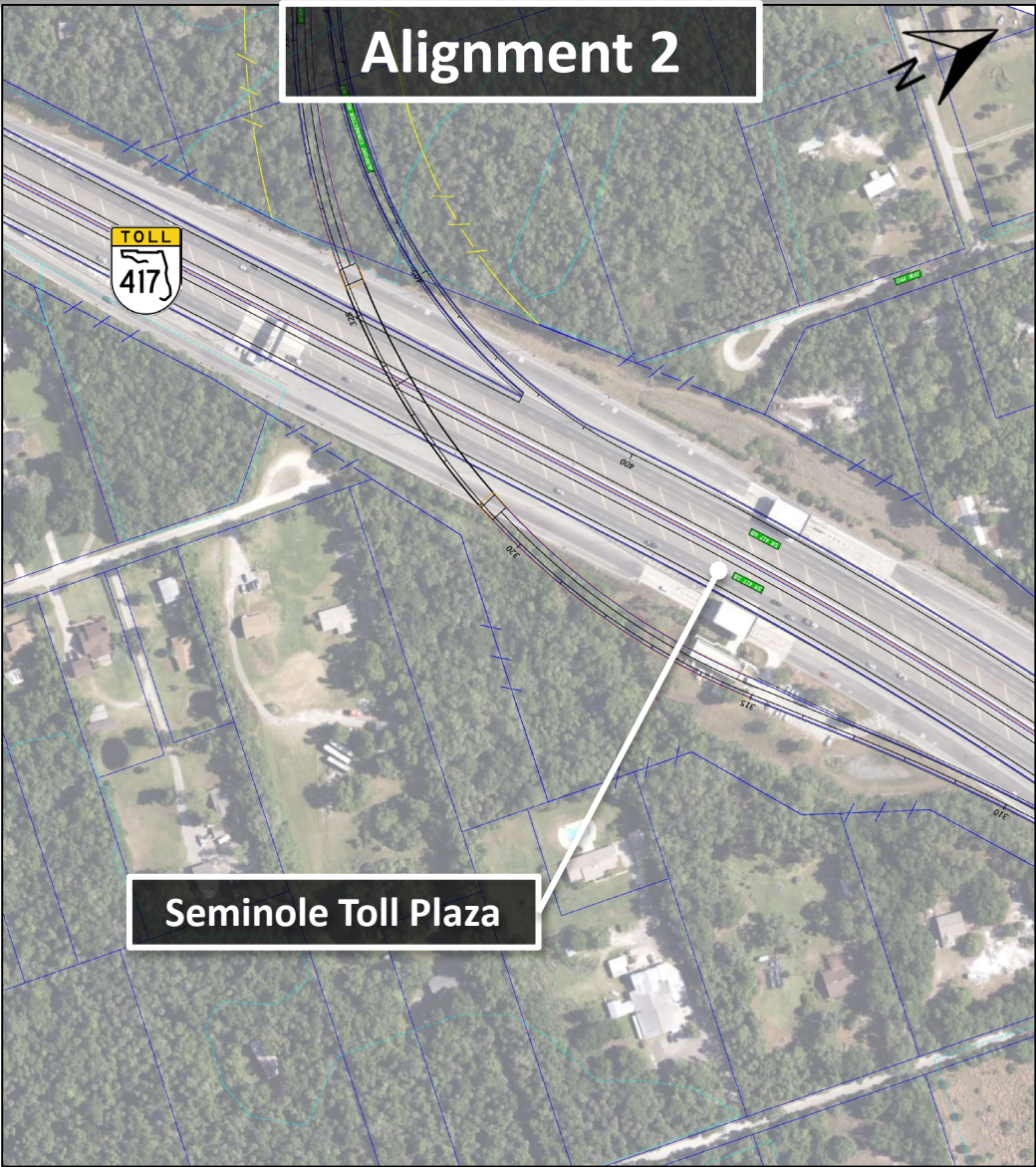
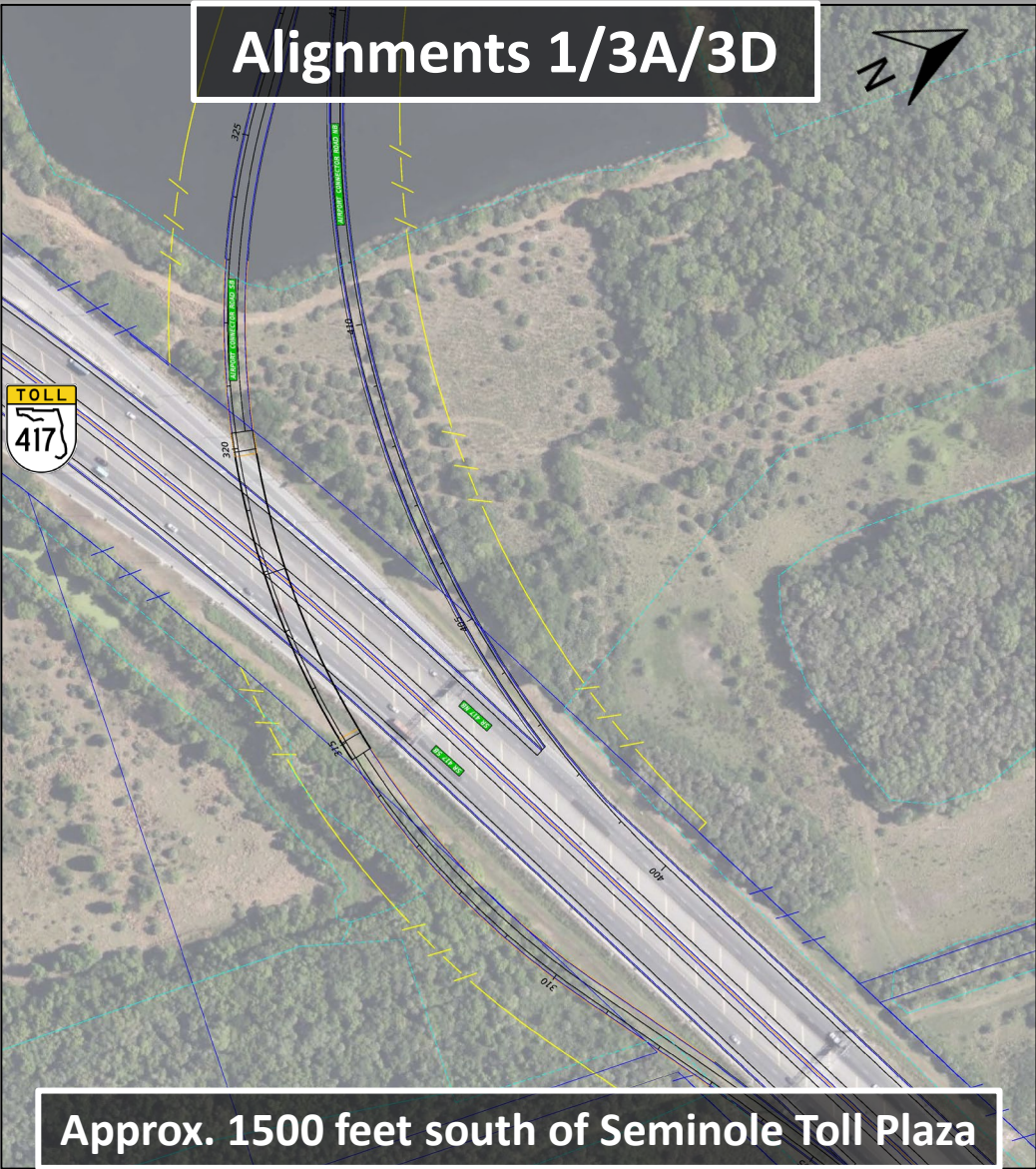


*Preliminary Rendering*

- Signalized Intersection
- Access to existing roadways maintained
- Full access to East Lake Mary Blvd.
- Improves future intersection operations



# Proposed Interchange at SR 417





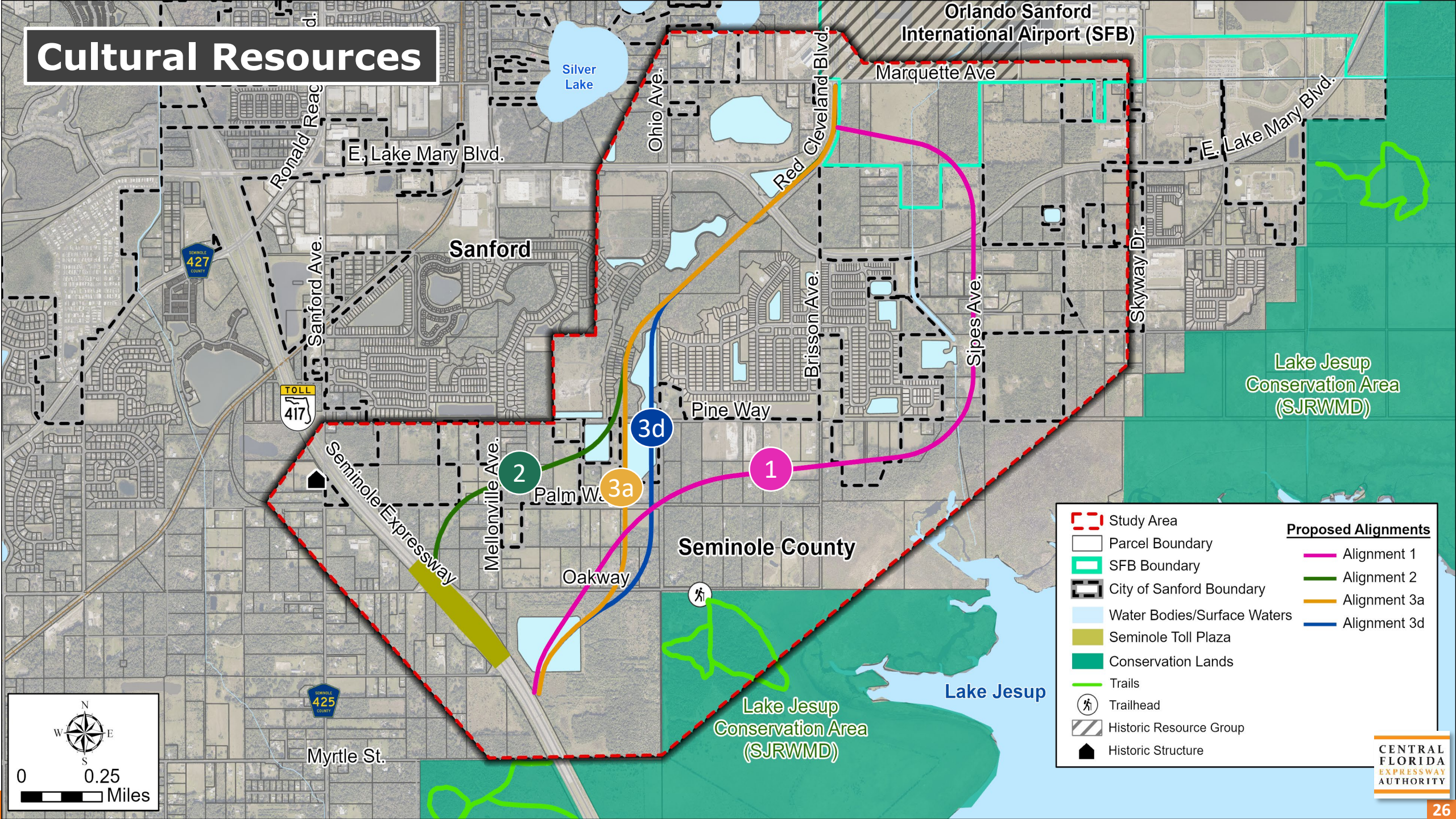
# Mobility Considerations

- Regional Coordination
  - Airport Master Plan
    - LYNX
    - SunRail
- Seminole County Trails Master Plan
- Intermodal Connections
  - Park and Rides
- Consistent with CFX Master Plan





# Cultural Resources



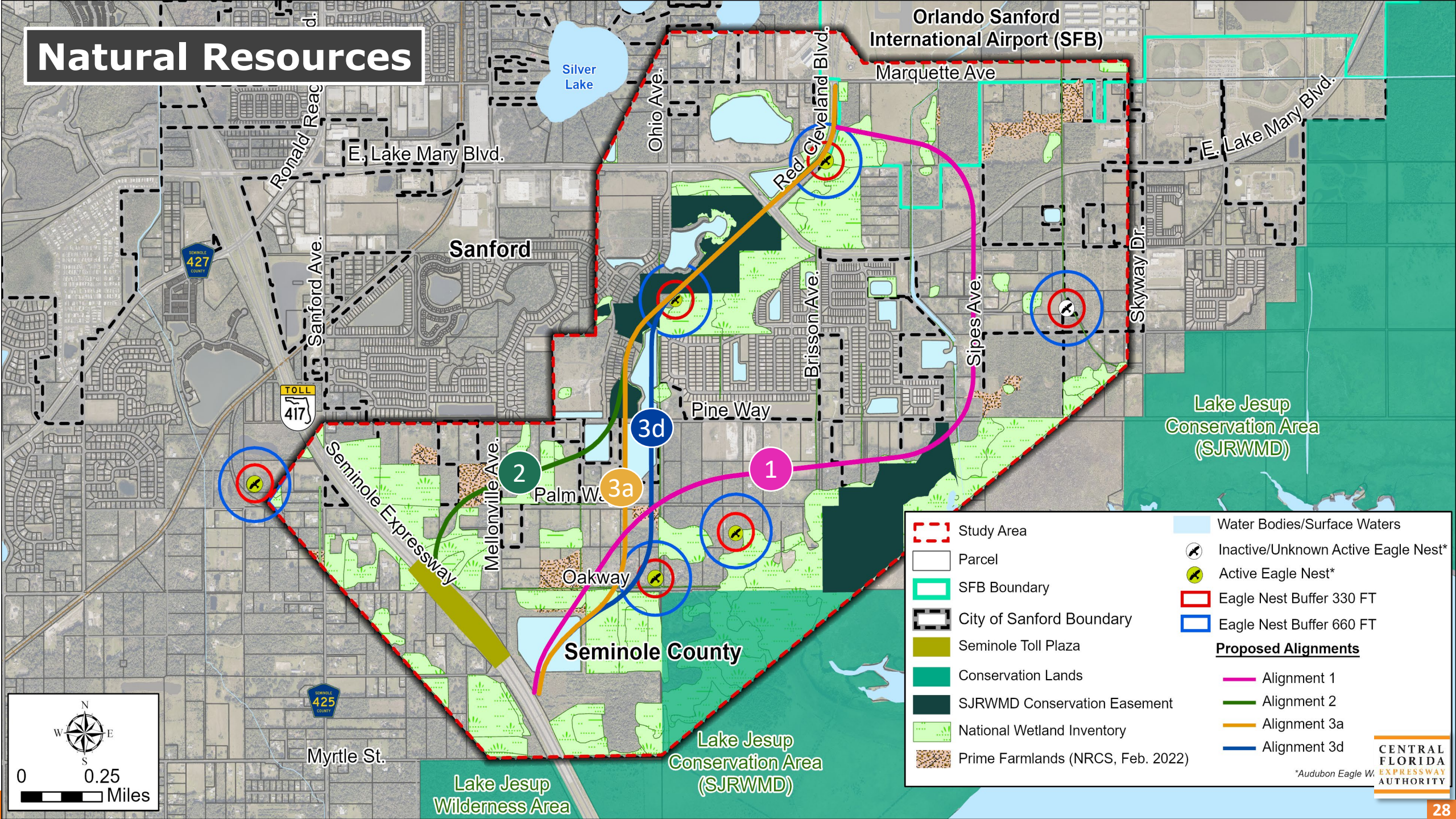


# Sociocultural Resources

- Airport Runway Protection Zone impacted by Alignment 1
- Existing/Permitted Residential Parcels Impacted: **5 to 31**
- Existing/Permitted Non-Residential Parcels Impacted: **10 to 17**
- Community Cohesion Effects: Low-High
- Socio-Economic Impacts to Special Populations: **Low**
- No NRHP-eligible cultural resources affected
  - Two historic resources along Alignment 1



# Natural Resources

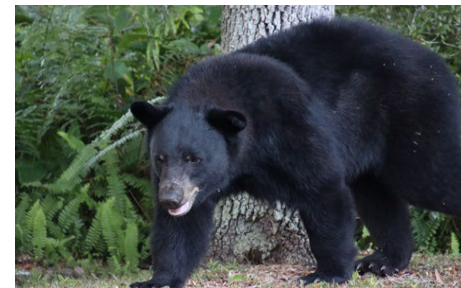




# Species Involvement

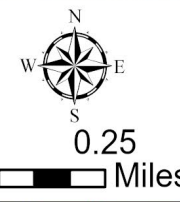
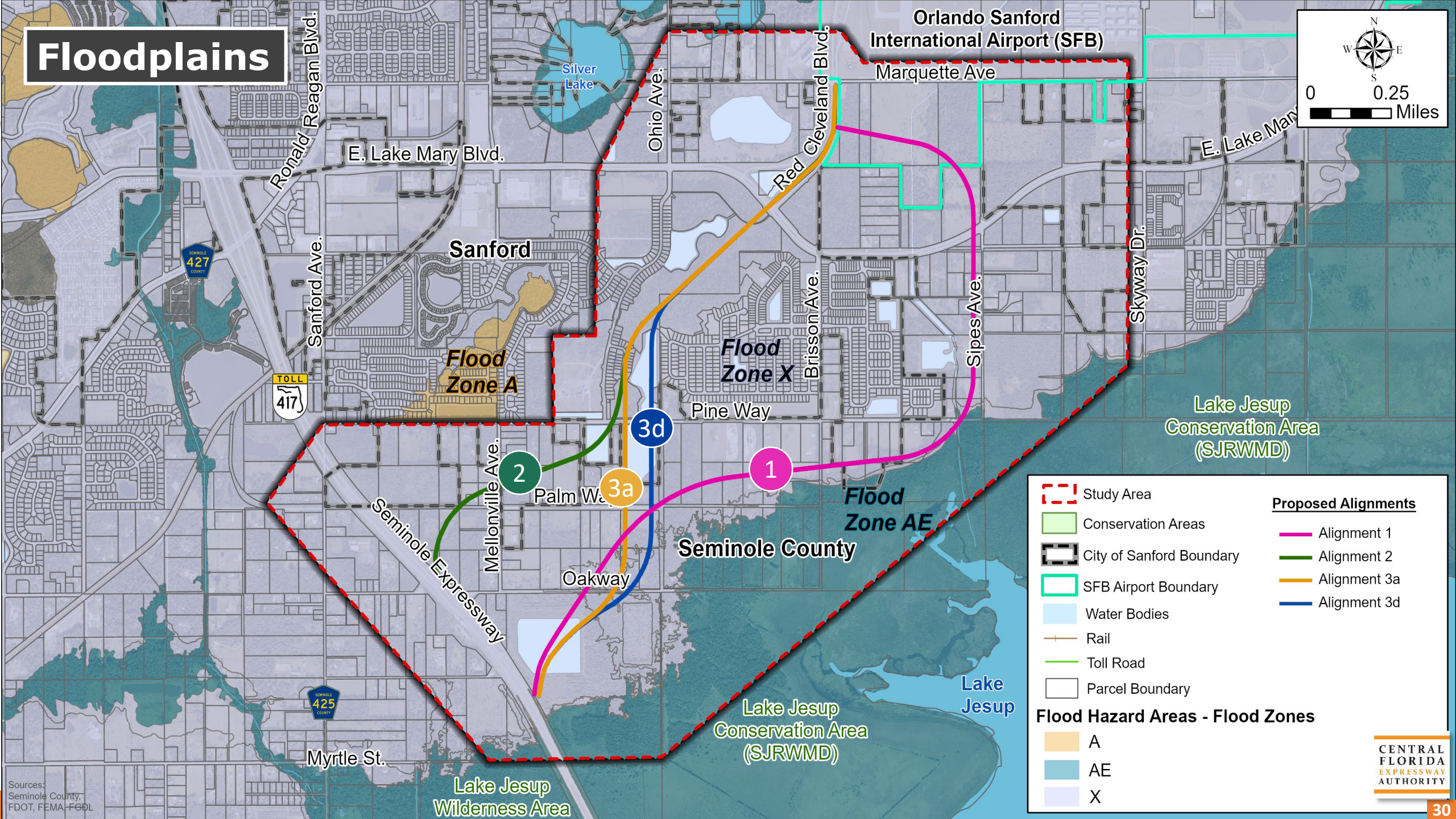
## Protected Species & Habitat

- Consultation Areas: Florida scrub-jay, Everglade snail kite, crested caracara, and manatee (Lake Jesup).
- Florida Wildlife Corridor: No Impacts
- Potential Species Involvement (medium/high occurrence):
  - Eastern indigo snake
  - Florida sandhill crane
  - Little blue heron
  - Bald eagle (up to three nests)
  - Florida black bear
  - Gopher tortoise
  - Roseate spoonbill
  - Short-tailed snake
  - Florida burrowing owl
  - Tricolored heron
  - Southeastern American kestrel
  - Wood stork
  - Everglade snail kite





# Floodplains



Study Area

Conservation Areas

City of Sanford Boundary

SFB Airport Boundary

Water Bodies

Rail

Toll Road

Parcel Boundary

**Proposed Alignments**

Alignment 1

Alignment 2

Alignment 3a

Alignment 3d

**Flood Hazard Areas - Flood Zones**

A

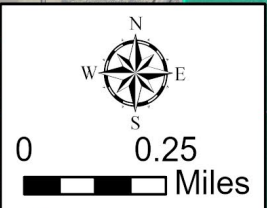
AE

X

Sources:  
Seminole County,  
FDOT, FEMA, FCDL



# Mitigation Opportunities





# Evaluation Matrix (1 of 2)

Evaluation Criteria	Unit of Measure	Alternatives			
		1	2	3a	3d
<b>Design</b>					
Alternative Length	Miles	3.1	2.4	2.5	2.5
Right-of-Way Width	Feet	150	150	150	150-200
Projected 2050 Traffic Volume	Daily Vehicles	18,400	24,800	24,800	24,800
<b>Social</b>					
Right-of-Way Area Needed (not including proposed ponds)	Total Acres	62	42	50	58
Potential Permitted Development Impacts	Acres	0	5	6	11
Potential Residential Parcels Affected	Total Parcels	26	31	23	5
Existing	Parcels	26	13	5	5
Planned	Parcels	0	18	18	0
Potential Non-Residential Parcels Affected	Total Parcels	17	10	13	11
Existing	Parcels	17	2	5	5
Planned	Parcels	0	8	8	6
Community Facilities	No. of Conflicts	1 <sup>a</sup>	0	0	0
Parks and Recreational Facilities (public and private)	No. of Conflicts	0	0	0	0
Trails	No. of Conflicts	0	0	0	0
Community Cohesion Effects	High/Med/Low	High	High	Med	Low
Socio-Economic Impacts to Special Populations	High/Med/Low	Low	Low	Low	Low
Prime Farmland	Acres	2	3	< 1	1
<b>Cultural Environment</b>					
Proximity to Public Recreation Lands and Wildlife Management Areas <sup>d</sup>	Feet	0	2500	400	400
Public Recreation Lands and Wildlife Management Areas Impacted	Y/N	N	N	N	N
Potential Known Historic Resources	No. of Resources	1 <sup>b</sup>	0	0	0
Potential Known Historic Linear Resources (Canals/Highways/Railroads)	No. of Resources	1 <sup>c</sup>	0	0	0
Potential Known Archaeological Resources	No. of Resources	0	0	0	0



# Evaluation Matrix (2 of 2)

Evaluation Criteria	Unit of Measure	Alternatives			
		1	2	3a	3d
<b>Natural Environment</b>					
Potential Conservation Easement Impacts (SJRWMD)	Acres	2	14	14	10
Potential Surface Water Impacts	Total Acres	7	3	13	18
<i>Natural Lakes</i>	Acres	0	0	0	0
<i>Stormwater Management Areas</i>	Acres	0	3	3	8
<i>Other Reservoirs</i>	Acres	7	0	10	10
<i>Canals/Creeks</i>	No. of Conflicts	2	0	0	0
Flood Hazard Area Impacts (100 Year Floodplain)	Acres	2	0	2	2
<b>Wetlands</b>	Total Acres	7	19	17	16
<i>Forested</i>	Acres	4	16	16	15
<i>Non-forested</i>	Acres	3	3	1	1
Potential Habitat - Federal Listed Species	Acres	47	34	37	59
Potential Habitat - State-Listed Species	Acres	40	32	27	59
Potential Bald Eagle Nest	No. of Conflicts	1	2	3	3
Potential Species Impacts (composite rating)	High/Med/Low	Medium <sup>g</sup>	Medium <sup>g</sup>	Medium <sup>g</sup>	Medium <sup>g</sup>
Mitigation Banks	Acres	0	0	0	0
Florida Forever Lands	Acres	0	0	0	0
Florida Wildlife Corridors	Acres	0	0	0	0
<b>Physical</b>					
Major Utility Conflicts - Existing <sup>h</sup>	No. of Conflicts	7	2	3	1
Contamination Sites & Facilities (Medium and High Risk Sites)	No. of Conflicts	0	0	0	0
Railroad Involvement	No. of Conflicts	0	0	0	0

# Public Involvement Opportunities

## Public Meeting

Tuesday, June 20, 2023

5:30 to 7:30 p.m.

Millennium Middle School

Shortened study website address:

<http://bit.ly/SR417AirportConnector>

CFX Web Address:

[www.CFXway.com](http://www.CFXway.com)



Shemir Wiles

Public Involvement Coordinator

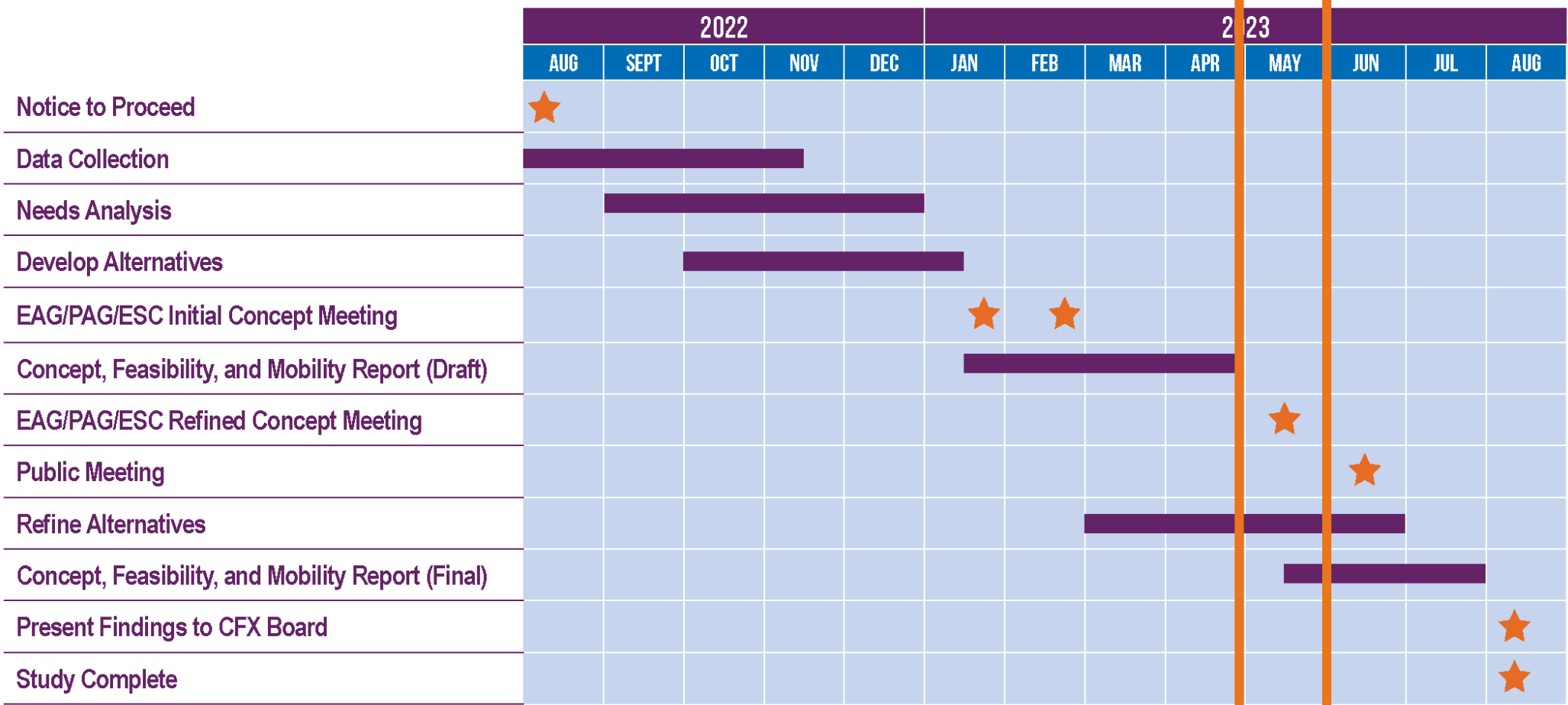
407-802-3210

[ConceptStudies@CFXway.com](mailto:ConceptStudies@CFXway.com)



# CF&M Schedule

(Subject to Change)



# Project Contact

## **Project Manager**

Jonathan Williamson, AICP

321-354-9614

[jwilliamson@Dewberry.com](mailto:jwilliamson@Dewberry.com)

## **Consultant Project Manager**

Sunserea Gates, P.E.

407-965-5844

[sgates@vhb.com](mailto:sgates@vhb.com)

## **Public Involvement Coordinator**

Shemir Wiles

407-802-3210

[ConceptStudies@CFXway.com](mailto:ConceptStudies@CFXway.com)





CENTRAL  
FLORIDA  
EXPRESSWAY  
AUTHORITY

THANK YOU!