

# CENTRAL FLORIDA EXPRESSWAY AUTHORITY

**AGENDA**  
**ENVIRONMENTAL STEWARDSHIP COMMITTEE MEETING**  
**May 25, 2023**  
**10:00 a.m.**

**Meeting location: Central Florida Expressway Authority**  
**4974 ORL Tower Road**  
**Orlando, FL 32807**  
**Pelican Conference Room**

**A. CALL TO ORDER**

**B. PUBLIC COMMENT**

Pursuant to Section 286.0114, Florida Statutes and CFX Rule 1-1.011, the Environmental Stewardship Committee provides for an opportunity for public comment at the beginning of each regular meeting. The Public may address the Committee on any matter of public interest under the Committee's authority and jurisdiction, regardless of whether the matter is on the Committee's agenda but excluding pending procurement issues. Public Comment speakers that are present and have submitted their completed Public Comment form to the Recording Secretary at least 5 minutes prior to the scheduled start of the meeting will be called to speak. Each speaker shall be limited to 3 minutes. Any member of the public may also submit written comments which, if received during regular business hours at least 48 hours in advance of the meeting, will be included as part of the record and distributed to the Committee members in advance of the meeting.

**C. APPROVAL OF FEBRUARY 23, 2023 ENVIRONMENTAL STEWARDSHIP COMMITTEE MEETING MINUTES (action item)**

**D. AGENDA ITEMS**

- 1. FLORIDA WILDLIFE CORRIDOR FOUNDATION UPDATE** – *Jason Lauritsen, Chief Conservation Officer, Florida Wildlife Corridor Coalition (info item)*
- 2. SOUTHPORT CONNECTOR EXPRESSWAY PROJECT DEVELOPMENT AND ENVIRONMENT (PD&E) STUDY** – *Ralph Bove, Project Manager, Volkert Inc. (info item)*
- 3. CFX LANDSCAPE UPDATE** – *Chris Bloodwell, Landscape Architect and Benjamin Baker, Senior Project Manager, Dewberry Engineers, Inc. (info item)*

**E. OTHER BUSINESS**

**F. ADJOURNMENT**

# CENTRAL FLORIDA EXPRESSWAY AUTHORITY

This meeting is open to the public.

*Section 286.0105, Florida Statutes states that if a person decides to appeal any decision made by a board, agency, or commission with respect to any matter considered at a meeting or hearing, they will need a record of the proceedings, and that, for such purpose, they may need to ensure that a verbatim record of the proceedings is made, which record includes the testimony and evidence upon which the appeal is to be based.*

*Persons who require translation services, which are provided at no cost, should contact CFX at (407) 690-5000 x5316 or by email at [Iranetta.Dennis@cfxway.com](mailto:Iranetta.Dennis@cfxway.com) at least three (3) business days prior to the event.*

*In accordance with the Americans with Disabilities Act (ADA), if any person with a disability as defined by the ADA needs special accommodations to participate in this proceeding, then they should contact the Central Florida Expressway Authority at (407) 690-5000 no later than two (2) business days prior to the proceeding.*

**C.**

**APPROVAL OF  
FEBRUARY 23,  
2023**

**ENVIRONMENTAL  
STEWARDSHIP  
COMMITTEE  
MEETING MINUTES**

# CENTRAL FLORIDA EXPRESSWAY AUTHORITY

## MINUTES ENVIRONMENTAL STEWARDSHIP COMMITTEE MEETING February 23, 2023

Location: Central Florida Expressway Authority  
4974 ORL Tower Road, Orlando, FL 32807  
Pelican Conference Room

### Committee Members Present:

Charles Lee, Citizen Representative, Committee Chairman  
Richard Durr, Seminole County Representative  
Maurice "Mo" Pearson, Citizen Representative  
Timothee Sallin, Lake County Representative  
Brittany Sellers, City of Orlando Representative

### Committee Member Participating by Phone:

Beth Jackson, Orange County Representative

### Committee Member Not Present:

Robert Mindick, Osceola County Representative  
Jim Barfield, Brevard County Representative

### Staff Present:

Laura Kelley, Executive Director  
Michelle Maikisch, Executive Director Elect  
Glenn Pressimone, Chief of Infrastructure  
Diego "Woody" Rodriguez, General Counsel  
Dana Chester, Director of Engineering  
Rita Moore, Recording Secretary/Executive Administrative Coordinator

## **A. CALL TO ORDER**

The meeting was called to order at approximately 10:05 am by Chairman Lee.

## **B. PUBLIC COMMENT**

Ms. Rita Moore, Recording Secretary announced there was no public comment.

There were no written public comments received by the deadline.

**C. APPROVAL OF THE JUNE 23, 2022 MEETING MINUTES**

A motion was made by Mr. Pearson and seconded by Mr. Durr to approve the June 23, 2022 minutes as presented. The motion carried unanimously with five (5) committee members in attendance voting AYE by voice vote. One (1) committee member, Ms. Jackson voting AYE by phone. Mr. Mindick and Mr. Barfield were not present.

**D. AGENDA ITEMS**

**1. RESOLUTION OF THE CENTRAL FLORIDA EXPRESSWAY AUTHORITY IN SUPPORT OF GREENWAYS, TRAILS AND WILDLIFE CORRIDORS**

Ms. Laura Kelley, Executive Director discussed the resolution that was approved by the board in February 2023. She explained that Mr. Dale Allen and CFX worked on this resolution together. Per the resolution, Ms. Kelley stated that CFX will connect trails and wildlife corridors as much as possible. She asked that the Environmental Stewardship Committee help CFX fulfill this commitment.

(This item was presented for information only. No committee action was taken.)

**2. SR 417 ORLANDO/SANFORD INTERNATIONAL AIRPORT CONNECTOR CONCEPT, FEASIBILITY AND MOBILITY (CF&M) STUDY UPDATE**

Ms. Sunsera Gates, Vanasse Hangen Brustlin, Inc. presented the SR 417 Orlando/Sanford International Airport Connector Concept, Feasibility and Mobility (CF&M) Study Update. Ms. Gates explained the feasibility phase and where it falls in the project development phase. She discussed the project background and the location map. Ms. Gates discussed the purpose and need of the project. She explained the CF&M evaluation criteria and constraints including sociocultural, floodplain and natural. She presented proposed alignments and discussed the differences between them.

Committee Members asked questions which were answered by Ms. Gates.

(This item was presented for information only. No committee action was taken.)

**3. SR 516 MITIGATION STRATEGIES**

Ms. Nicole Gough, Dewberry Engineers, Inc. presented the SR 516 Mitigation Strategies. Ms. Gough detailed the project permitting phases and jurisdictions. She presented the wildlife and species impacts. She detailed the mitigation bank for the project for each segment of the project. She detailed the functional loss, parcel maps, and mitigative value.

Committee Members asked questions which were answered by Ms. Gough and Mr. Pressimone.

(This item was presented for information only. No committee action was taken.)

**E. OTHER BUSINESS**

Chairman Lee announced the new Chairman will be Beth Jackson.

Chairman Lee announced that the next Environmental Stewardship Committee is scheduled for May 25<sup>th</sup>, 2023.

**F. ADJOURNMENT**

Chairman Lee adjourned the meeting at 11:37 a.m.

Minutes approved on \_\_\_\_\_, 2023.

*Pursuant to the Florida Public Records Law and CFX Records Management Policy, audio tapes of all Board and applicable Committee meetings are maintained and available upon request to the Records Management Liaison Officer at [publicrecords@CFXway.com](mailto:publicrecords@CFXway.com) or 4974 ORL Tower Road, Orlando, FL 32807.*

# **D.1**

## **FLORIDA WILDLIFE CORRIDOR FOUNDATION UPDATE**



CFX Environmental  
Stewardship  
Committee

5/25/2023



*Florida*  
**WILDLIFE  
CORRIDOR**  
*Foundation*

JASON LAURITSEN  
Chief Conservation Officer  
Jason@floridawildlifecorridor.org



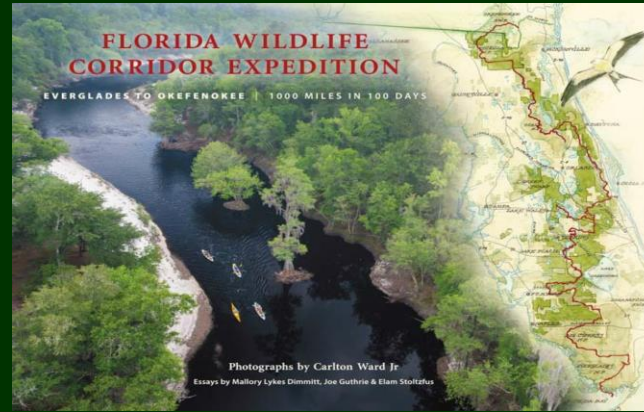
# FLORIDA WILDLIFE CORRIDOR

Connecting to Keep Florida Wild



*photo: Carlton Ward Jr.*

# EXPEDITIONS FILMS & MURALS



NATIONAL GEOGRAPHIC PRESENTS

# Nature Coast Expedition Film



# HOME WATERS

AVA MOODY    MARIN BEST    MALLORI GREY



IN ASSOCIATION WITH THE FLORIDA WILDLIFE CORRIDOR FOUNDATION PRODUCED & DIRECTED BY JENNIFER ADLER  
DIRECTOR OF PHOTOGRAPHY IAN SEGEBARTH    MUSIC ABBY WOLFE

# O2O Expedition: Operation Connect Protect and Restore



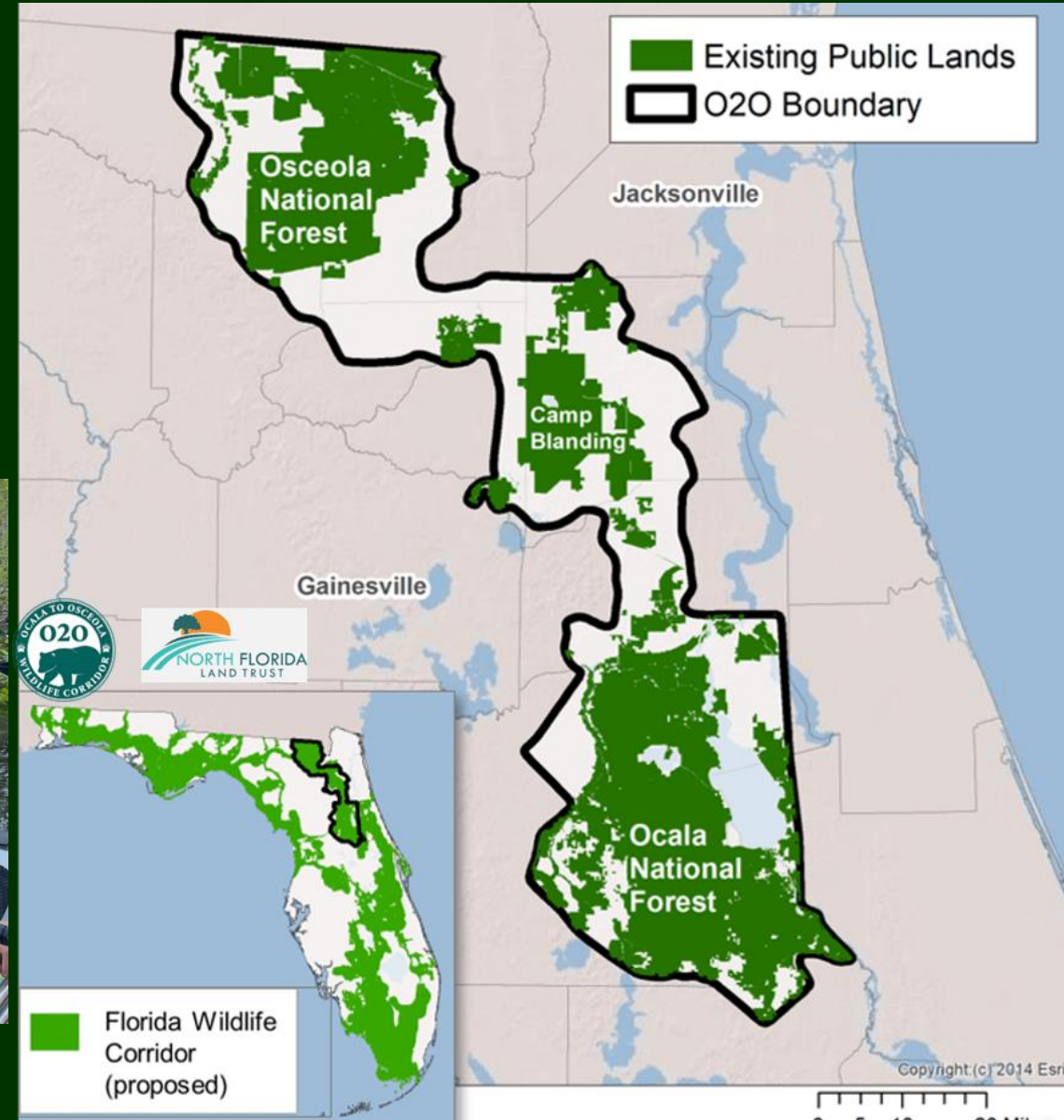
Austin



Joe



Brandi



# Working Toward a Diverse Resilient Florida

People  
Wildlife  
Habitat



# Working Toward a Diverse Resilient Florida

People  
**Wildlife**  
Habitat



# Working Toward a Diverse Resilient Florida

People  
Wildlife  
**Habitat**





# Florida **WILDLIFE CORRIDOR** Foundation

## Our Mission

champion a collaborative  
campaign to permanently  
**connect, protect and restore**  
the Florida Wildlife Corridor

Inspiration • Education • Advocacy



Map painting by Michael Reagan







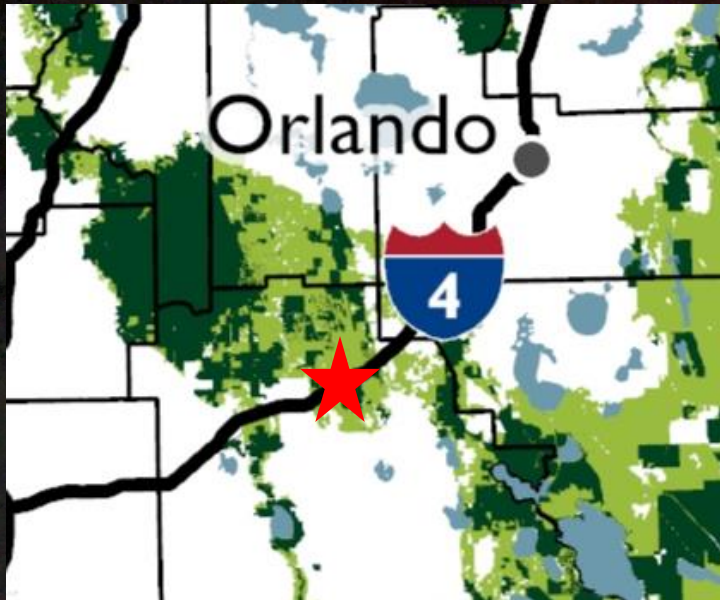


GRANT BEMIS



CARLTON WARD

# FDOT Wildlife Crossing at I4



33 million people by 2070

## 2010 Baseline

Statewide 2010 Baseline

- Developed
- Protected
- Other



Connecting, protecting and restoring the Corridor

## 2070 Trend

Statewide 2070 Trend

- Developed
- Protected
- Other



How we grow makes all the difference.

## 2070 Alternative

Statewide 2070 Alternative

- Developed
- Protected
- Other





Protecting the corridor does not mean creating pathways for wildlife into communities. It means preserving the most important existing pathways to allow wildlife movements that serve both wildlife and human communities.

# WHAT AND WHERE IS THE CORRIDOR?

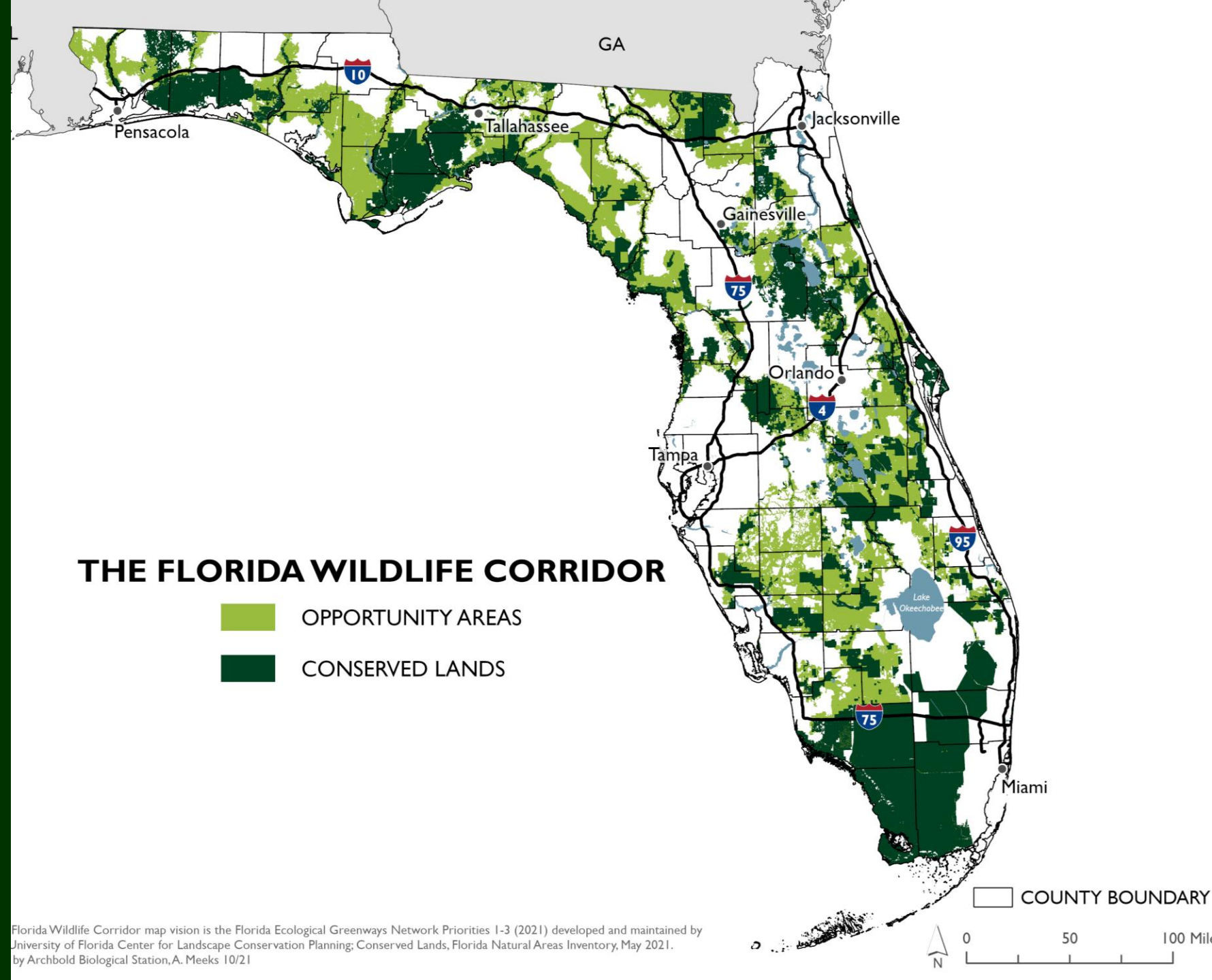
## Hubs & Connections

18 million acres

10 million acres protected

8 million acres unprotected

>100 Bottlenecks



Florida Wildlife Corridor map vision is the Florida Ecological Greenways Network Priorities 1-3 (2021) developed and maintained by University of Florida Center for Landscape Conservation Planning; Conserved Lands, Florida Natural Areas Inventory, May 2021. by Archbold Biological Station, A. Meeks 10/21



# How was the Corridor Boundary Determined?

[Florida Ecological Greenways Network \(FEGN\) model](#) was created using...

- 26 Priority Ecological Area data layers
- 7 connectivity models

**These data were used to identify a series of hubs, or core areas, of large, landscape-scale ecological significance, and a network of corridors connecting the hubs into a statewide ecological greenways system.**

The Florida Wildlife Corridor is composed of the top 3 priority layers from the FEGN model.



# Wildlife Corridors and Core Habitat Patches



Reserve Network for Florida

Nodes of concentrated ecological value exist in each landscape at all levels in the biological hierarchy. Integration of these high quality nodes into a functional network is possible through the establishment of a system of interconnected multiple-use modules.\*

Noss & Harris 1986

- Core Preserves
- Buffer Zones and Corridors

Source: Noss & Cooperrider 1994



The Reserve Network developed by Noss in 1994 preceded and informed the FEGN model.

# Corridor Functions

**Wildlife Corridor functions vary.** As will their design. Technical expertise must be applied to local conditions.

- Commuter – daily movements
- Seasonal – annual migrations
- Dispersal – one way movements

## What does success look like?

The immigration of one unrelated successful breeding individual per generation can be enough to counter genetic drift (Wang 2004)

Wang, J. 2004. *Application of the one-migrant-per-generation rule to conservation and management*. Conservation Biology 18(2):332-43.

Corridors facilitate wildlife movements, which may be commuter, seasonal, or one time dispersal events.

Wildlife Corridors maintain genetic exchange, facilitate seasonal movements, provide for multigenerational movement, and enable movement over time in response to climate change (Hilty 2019)

**In short, further fragmentation of habitat will lead to decreased species richness, smaller wildlife populations (fewer bears, bobcats, panthers etc), more frequent patch extinction, slower recolonization of patches, and reduced genetic vigor leaving populations vulnerable to disease.**

Hilty, J. A., Keeley, A.H., Lidicker, W. Z., & Merenlender, A. M. (2019). *Corridor ecology: linking landscapes for biodiversity conservation and Climate Adaptation*. Washington, DC: Island Press.

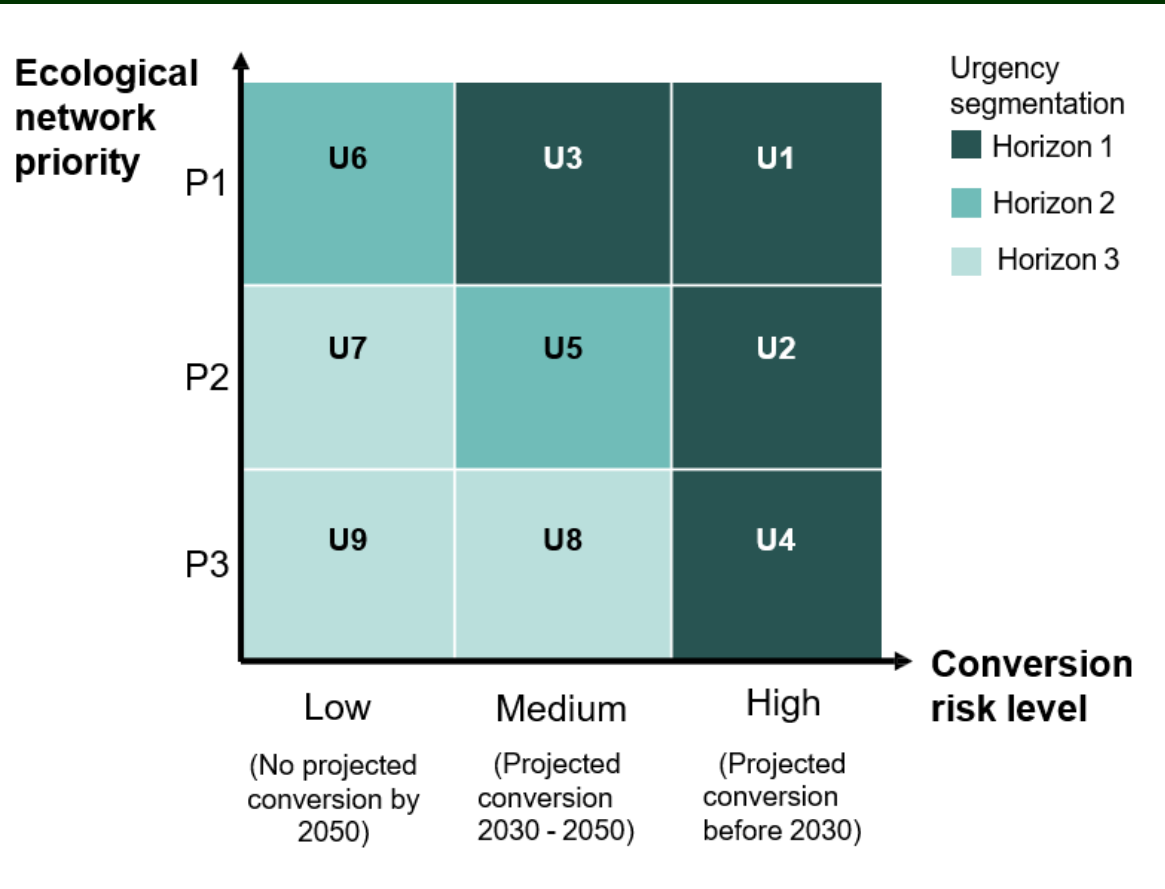
# Ecosystems are more resilient when conserved in large, unfragmented areas.\* Generally...

- Isolated habitat patches need to be larger than patches that are connected in order to sustain biotic communities.\*\*
- The ability to recover from a catastrophic episode (hurricane, severe fire, flood, drought) is a resiliency goal. Patch size and connectivity factor into resilience.
- If your habitat patch size decreases, connectivity to the remaining patches becomes more important.

*\*Walker and Salt 2006*

*\*\*Rolstad 1991*

# Economic Study



10 million

Acres under conservation status ("conserved lands")

8 million

Acres that are unprotected lands ("opportunity areas"), primarily privately-owned natural and working lands (e.g., ranches, timberlands)

50%

Decline in Florida's park-to-inhabitant ratio since the 1980s

114,000+

Number of jobs the Corridor currently provides (directly and indirectly)

\$30 billion

Approximate annual value of the Corridor to the State<sup>8</sup>:

- \$4 billion (approx.) in direct economic annual value (renewably generated by the recreation, tourism, agriculture, ranching, and forestry sectors that depend on the Corridor)
- \$24 billion (approx.) in indirect & other economic annual value (recreation, tourism, agriculture, ranching, and forestry sectors and the DoD activity and mining in the Corridor)
- \$1 billion (approx.) in annual value through environmental benefits, such as carbon absorption and excess nutrient filtration

Significant FL State Policy, executive and legislative action and diverse public stakeholder interest have affirmed the Corridor goals. Legislative and budgetary support for preserving the Corridor was affirmed by the passage of Senate Bill 976 in the summer of 2021, pointing to the potential for socioeconomic impact from this policy and funding and implementation scenarios to realize it

21%

Estimated Corridor opportunity area that may be lost by 2050 due to conversion to residential or other development (6% of this by 2030)

1.8 million

Number of acres protected through programs such as Florida Forever, Rural and Family Lands, and Sentinel Landscapes Partnership between 1990 and 2021, primarily through conservation easements and the purchase of land for conservation purposes

\$17-42 billion

Estimated cost of using easements and land purchases alone to secure the Corridor opportunity area

\$500 million

Annual investment needed for the next 9 years (through 2030, for a total of \$4.2-4.6 billion) to secure Horizon 1 Corridor land with an innovative conservation strategy, to prevent erosion of the opportunity areas (providing a 6.1x return on investment)

\$298 billion

Estimated value the Corridor will provide the state over the next 9 years

33 million people by 2070

## 2010 Baseline

Statewide 2010 Baseline

- Developed
- Protected
- Other



Connecting, protecting and restoring the Corridor

## 2070 Trend

Statewide 2070 Trend

- Developed
- Protected
- Other



How we grow makes all the difference.

## 2070 Alternative

Statewide 2070 Alternative

- Developed
- Protected
- Other

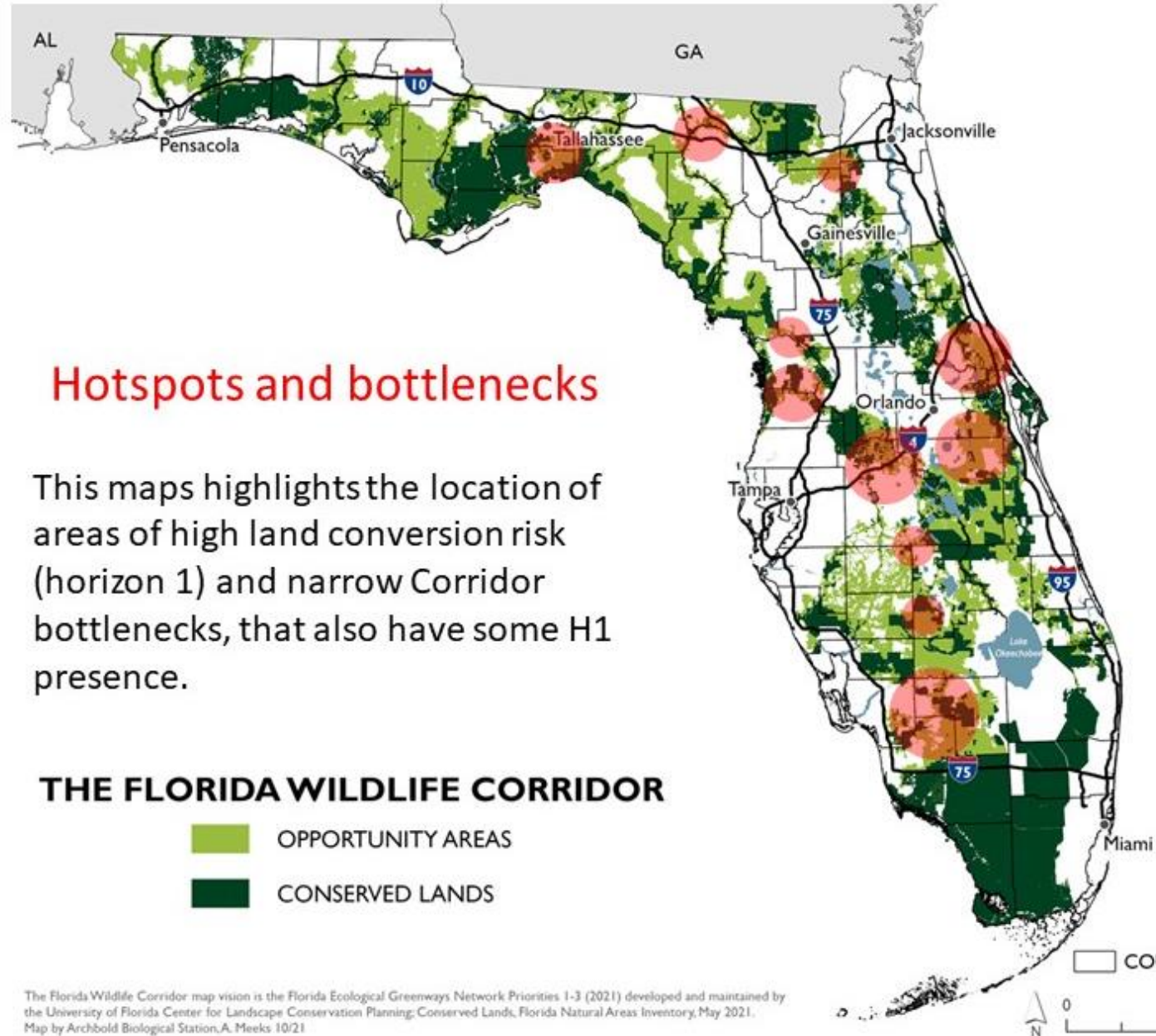


# Priorities, Bottlenecks and Hotspots

The FEGN and Florida Wildlife Corridor are efforts to identify priorities from a landscape perspective.

Other efforts are underway to add to our ability to prioritize conservation within the Corridor, including...

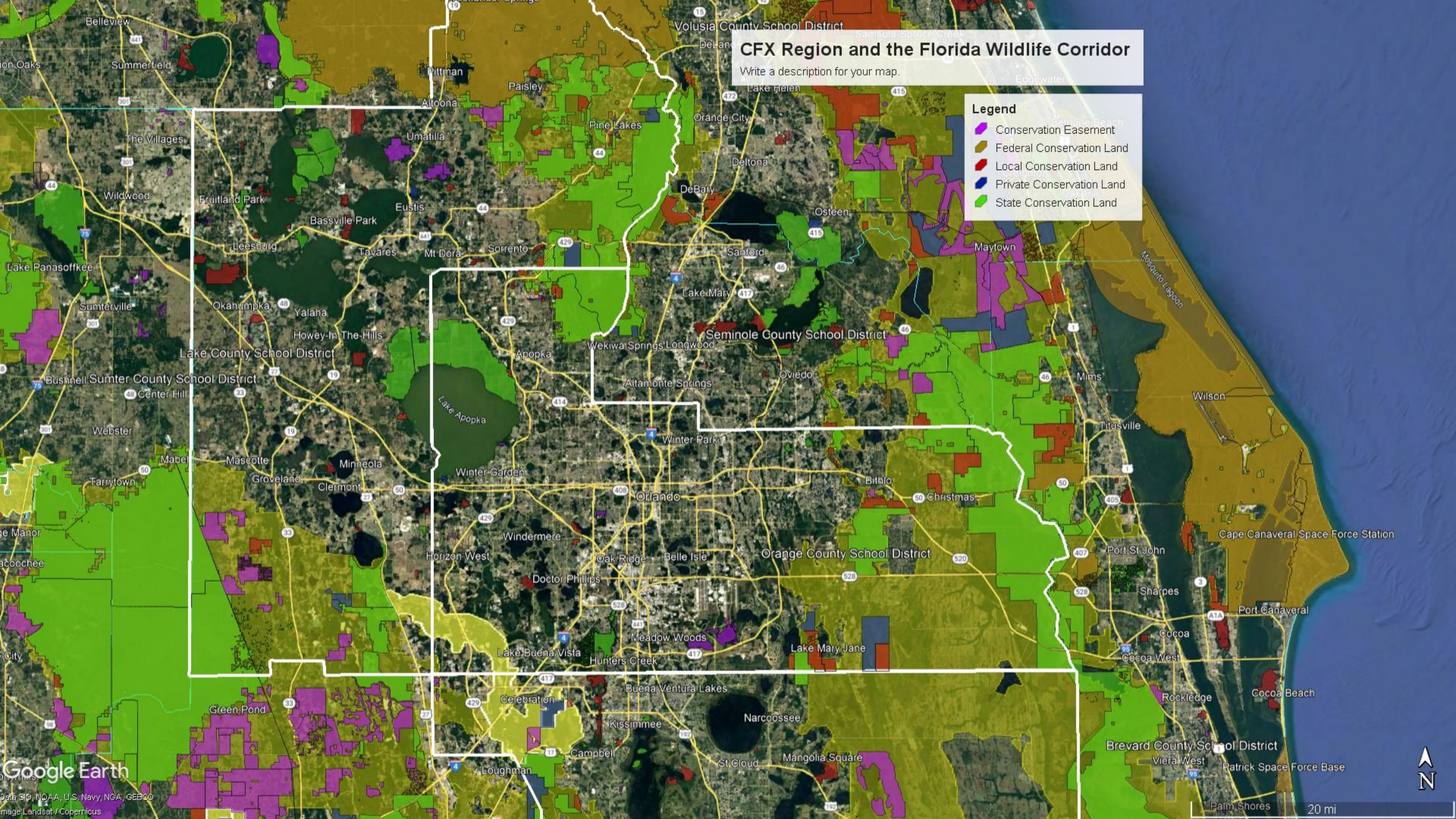
- The Economic Study
- Archbold Science Exchanges



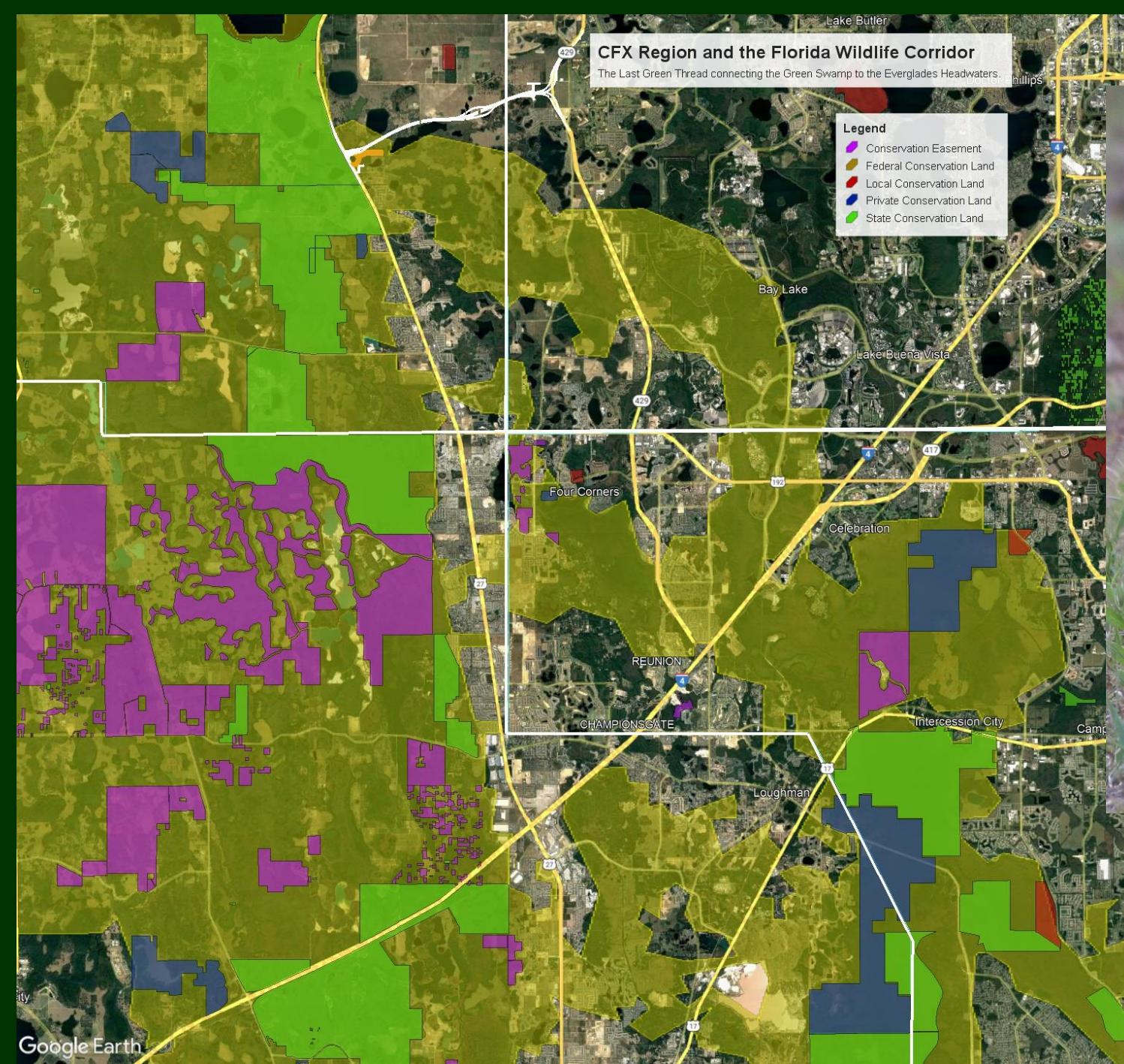
# CFX Region and the Florida Wildlife Corridor

Write a description for your map.

- Legend**
- Conservation Easement
  - Federal Conservation Land
  - Local Conservation Land
  - Private Conservation Land
  - State Conservation Land









CARLTON WARD

Networks of connected and protected areas are inherently more resilient than individual, isolated patches.

An aerial photograph of a winding river cutting through a dense, lush green forest. The river flows in a series of loops and curves, with several sandy banks visible. The text "THANK YOU" is overlaid in the center of the image in a white, sans-serif font.

THANK YOU

**D.2**  
**SOUTHPORT**  
**CONNECTOR**  
**EXPRESSWAY**  
**PROJECT**  
**DEVELOPMENT**  
**AND**  
**ENVIRONMENT**  
**(PD&E) STUDY**

The logo for the Central Florida Expressway Authority is centered in the upper portion of the image. It consists of a white rectangular box with two horizontal orange bars, one above and one below the text. The text is arranged in four lines: 'CENTRAL' and 'FLORIDA' in black, 'EXPRESSWAY' in orange, and 'AUTHORITY' in black. The background of the entire slide is a photograph of a multi-level concrete highway interchange with green-painted steel girders, set against a clear blue sky and a grassy embankment.

**CENTRAL  
FLORIDA  
EXPRESSWAY  
AUTHORITY**

**Southport Connector Expressway  
Project Development & Environment (PD&E) Study**

**Environmental Stewardship Committee**

**— May 25, 2023 —**

**Ralph Bove, Volkert, Inc.**

# Goals and Objectives

- Improve connections to existing roadways
- Enhance mobility of growing population and economy
- Relieve capacity constraints along Cypress Parkway
- Accommodate future transit options
  - Local, state and regional plans
  - Close coordination with future land use development
- Promote regional connectivity
- Enhance evacuation and emergency service

# ACER Results Comparative Analysis of Alternatives



Corridor Alternative	Purpose & Need Satisfaction	Potential for Relatively High Impacts	Evaluation Matrix Weighted Score	Estimated Cost (in millions)	Recommendation for Further Consideration
2000	No	10	36.4	\$1,215	No
3000	Yes	1	58.0	\$871	Yes
4000	Yes	2	61.2	\$860	Yes
7000	Yes	2	61.4	\$863	Yes

# Southport Connector ACER Review



BEGIN STUDY

END STUDY

ALT 3000

ALT 4000

ALT 7000

- Legend**
- Southport Connector Study Area
  - Systems Interchange
  - Cypress Parkway
  - Alternative 3000
  - Alternative 4000
  - Alternative 7000
  - County Boundary





# Lake Russell Cultural Site Alternatives






Southport Rd

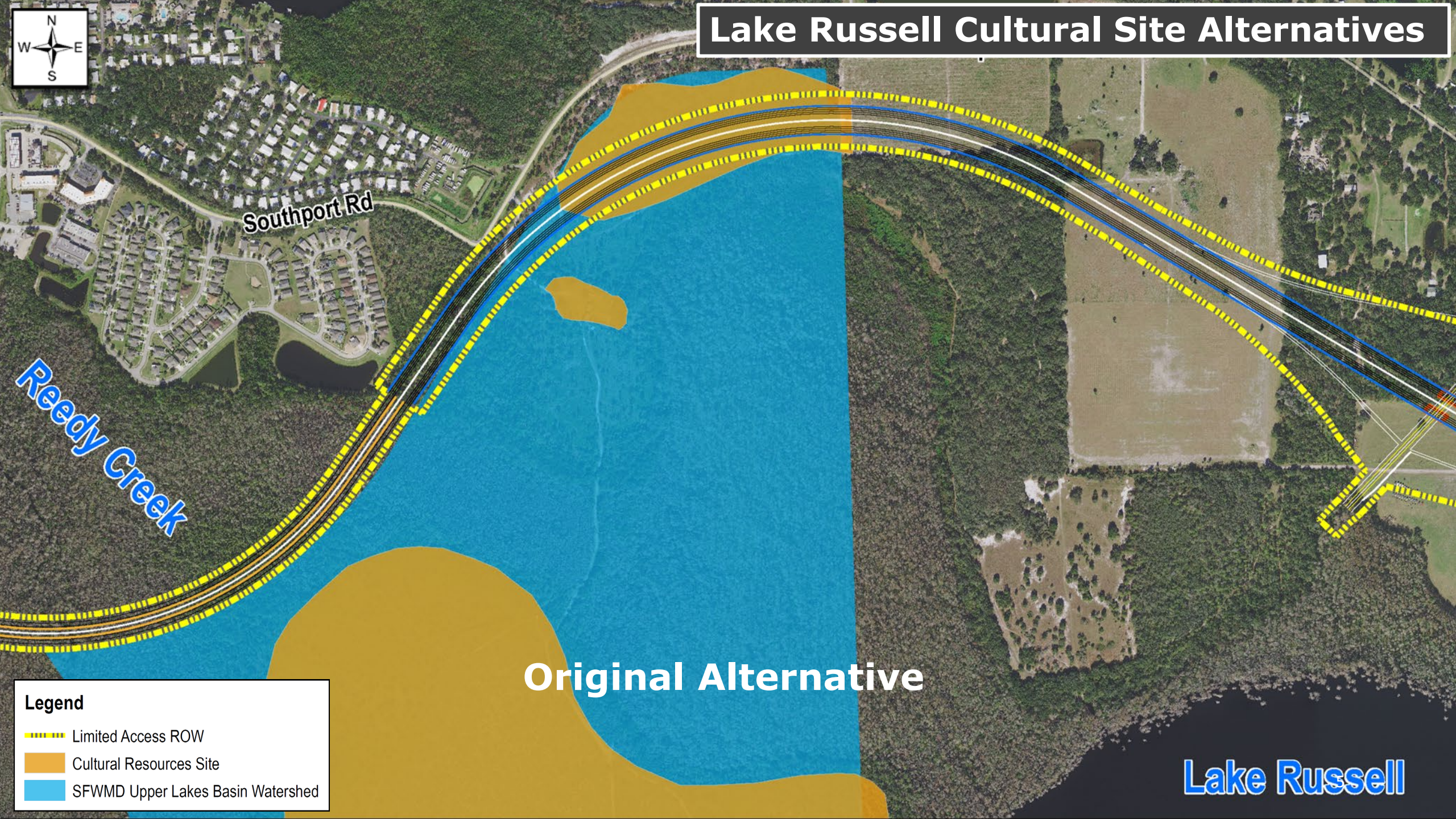
Reedy Creek

Original Alternative

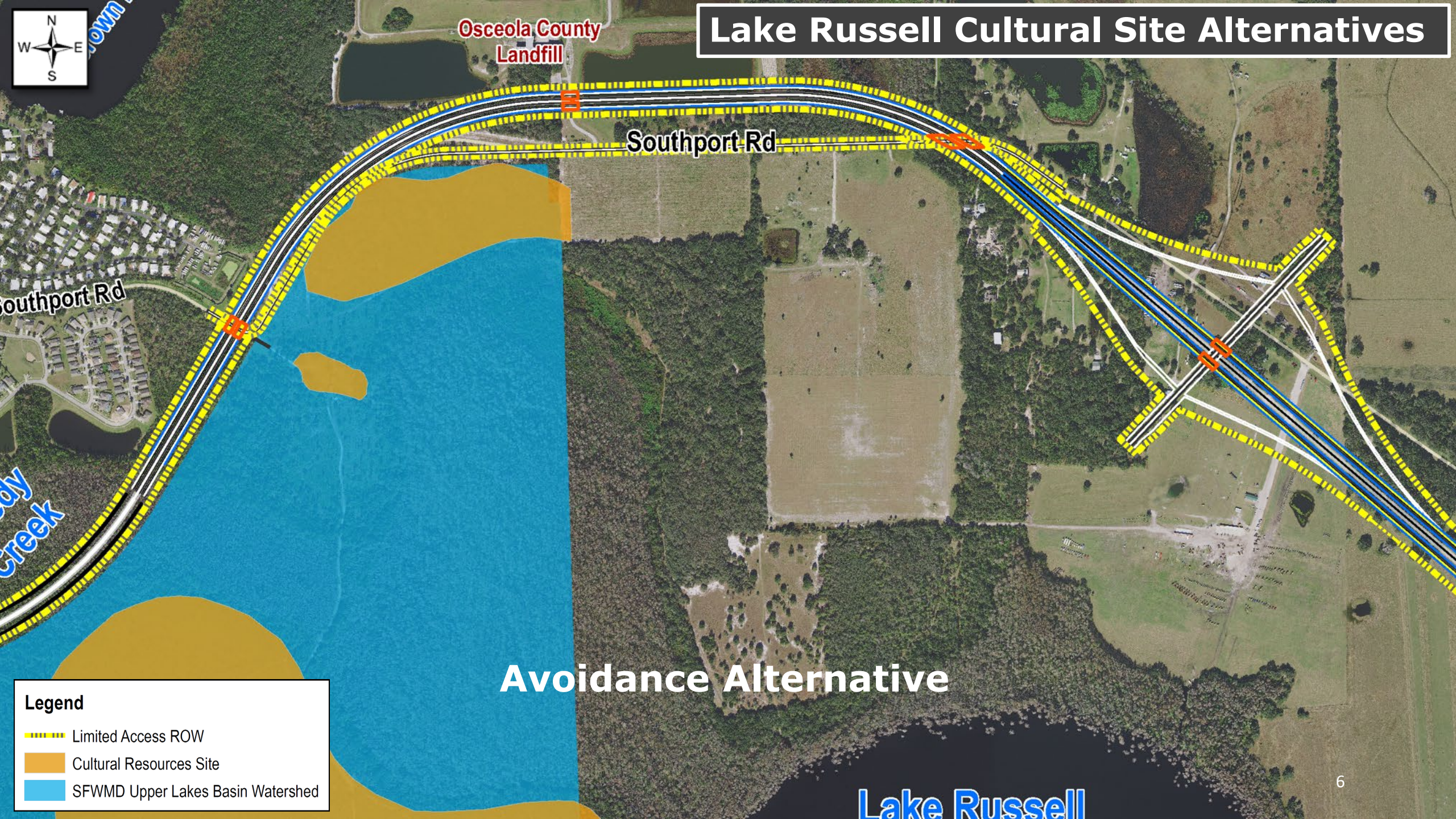
**Legend**

-  Limited Access ROW
-  Cultural Resources Site
-  SFWMD Upper Lakes Basin Watershed

Lake Russell



# Lake Russell Cultural Site Alternatives



Osceola County  
Landfill

Southport Rd

Southport Rd

dy  
Creek

Avoidance Alternative

**Legend**

- Limited Access ROW
- Cultural Resources Site
- SFWMD Upper Lakes Basin Watershed

Lake Russell

# Lake Russell Cultural Site Alternatives



Osceola County  
Landfill

Southport Rd

Potential Southport Rd  
Realignment




Southport Rd

edy  
Creek

## Minimization Alternative

## Lake Russell

**Legend**

-  Limited Access ROW
-  Cultural Resources Site
-  SFWMD Upper Lakes Basin Watershed

# Cypress Parkway Segment



OSCEOLA COUNTY

POLK COUNTY

Poinciana Pkwy

KOA St

Marigold Ave

Cypress Woods Community

Doverplum Ave

Reedy Creek

Pleasant-Hill Rd

Cypress Pkwy

Poinciana Medical Center

Polk County Fire Station

Vance Harmon Park

Publix

Poinciana Towne Center

Tierra Pointe

Bravo

SOLIVITA

Stonegate Golf Club

Marigold Ave

Country Club Rd

Pleasant-Hill Rd

**LEGEND**

- Southport Connector Expressway
- Cypress Parkway segment
- Overpass locations
- Potential locations for access ramps

# Cypress Parkway Segment



OSCEOLA COUNTY

POLK COUNTY

Poinciana Pkwy

KOA St

Marigold Ave

Cypress Woods Community

Doverplum Ave

Reedy Creek

Pleasant-Hill Rd

Cypress Pkwy

Poinciana Medical Center

CONCEPT HYBRID

Vance Harmon Park

Publix

Poinciana Towne Center

Bravo  
Tierra Pointe



Fire Station

MSE Wall

Structure

SOLIVITA

Stonegate Golf Club

Marigold Ave

Country Club Rd

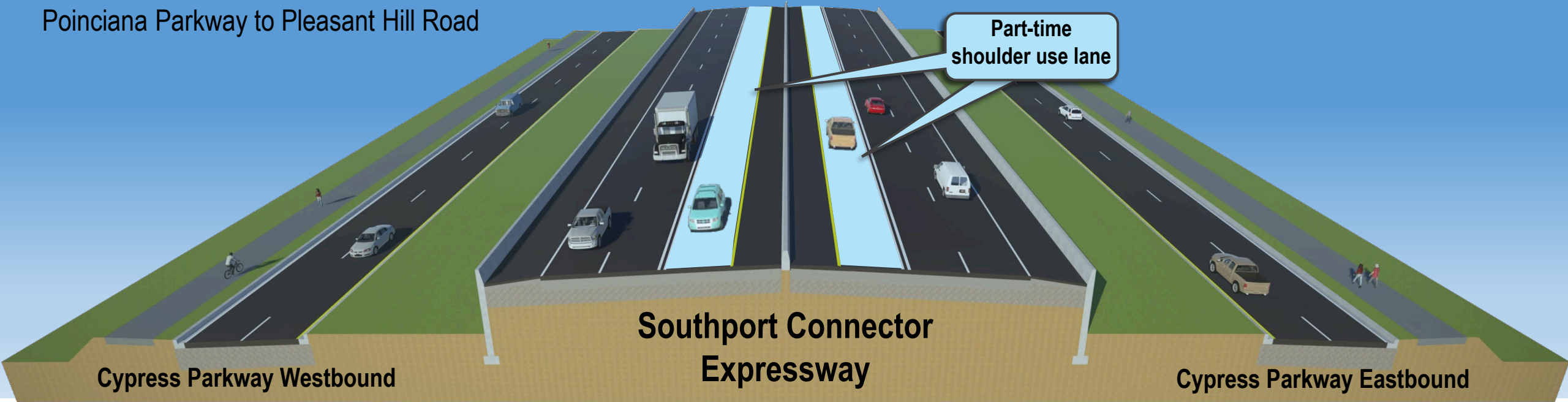
Pleasant-Hill Rd

**LEGEND**

- Southport Connector Expressway
- Cypress Parkway segment
- Overpass locations
- Potential locations for access ramps

# Revised Cypress Parkway Typical Section

Poinciana Parkway to Pleasant Hill Road

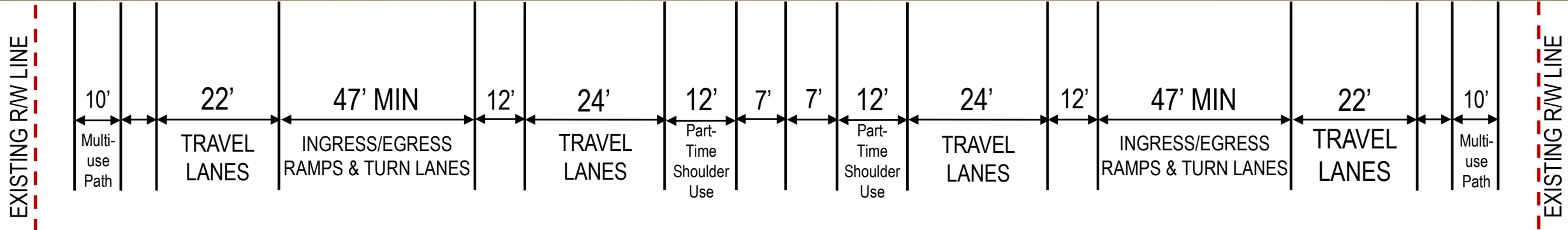


Part-time  
shoulder use lane

Southport Connector  
Expressway

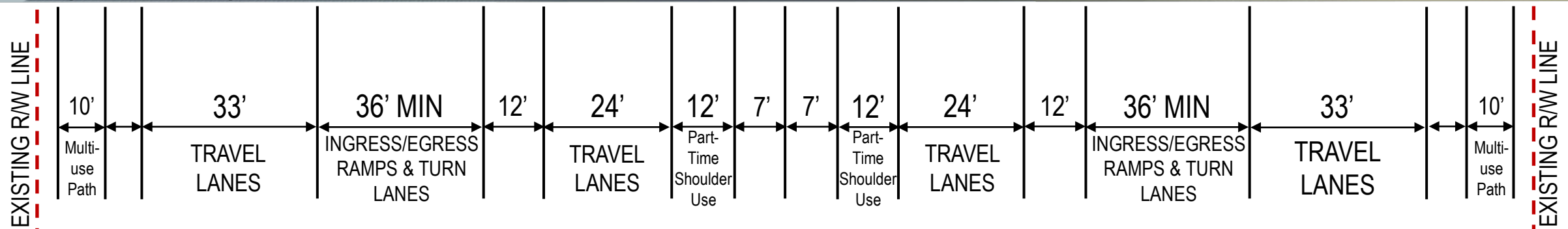
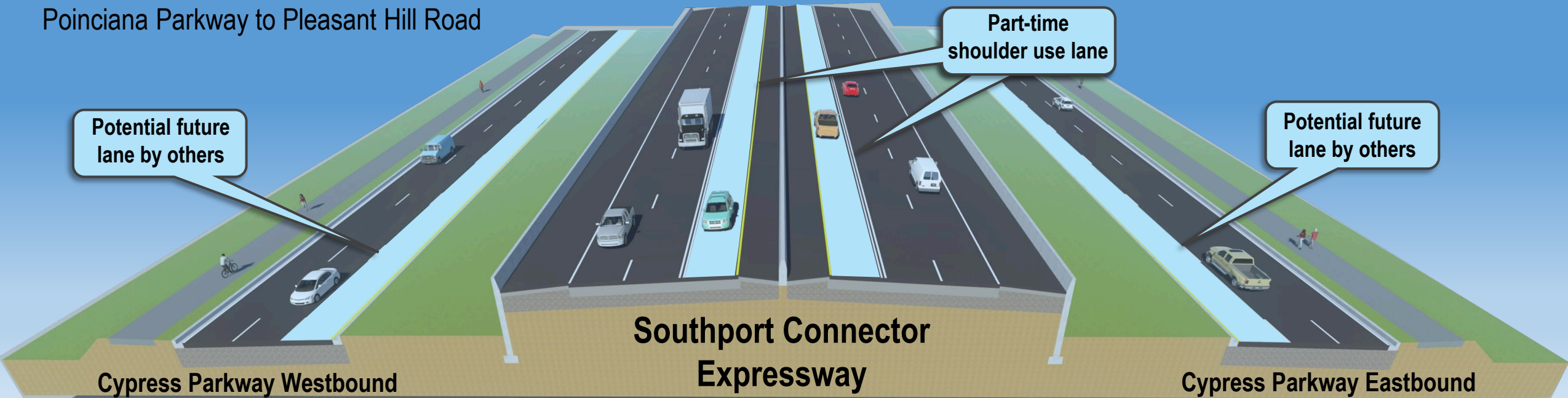
Cypress Parkway Westbound

Cypress Parkway Eastbound

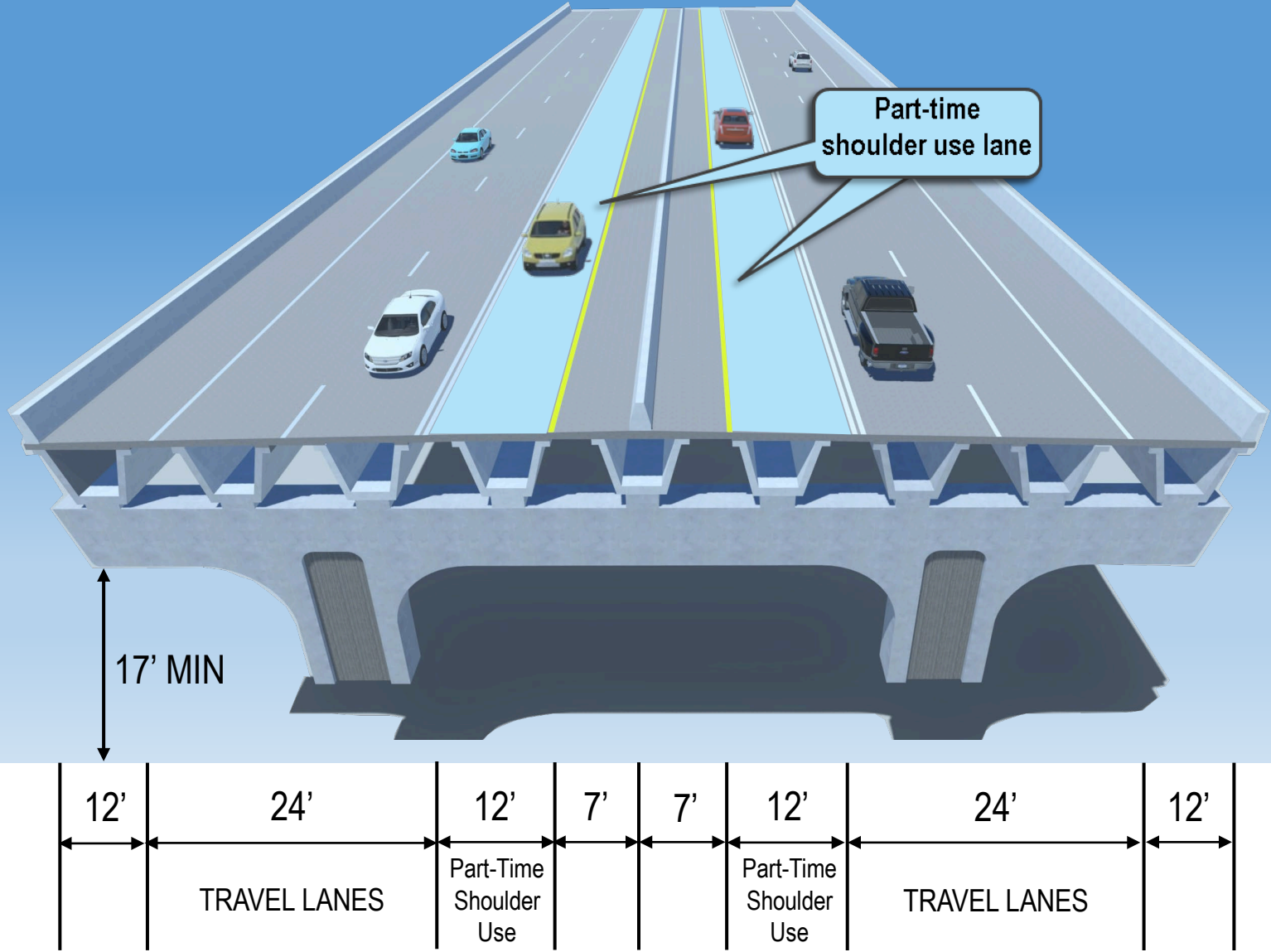


# Revised Cypress Parkway Typical Section

Poinciana Parkway to Pleasant Hill Road



# Cypress Parkway Elevated Concept





# Draft Impact Comparison Matrix: Cypress Parkway Segment

**DRAFT**

Evaluation Criteria	Unit of Measure	Cypress Parkway
Alternative Length (approximate)	Miles	4.5
Proposed Right-of-Way Width (general: varies at interchanges and environmentally sensitive areas)	Feet	300
<b>Cultural Environment Effects</b>		
Public Lands (Recreation and Conservation)	acres	0
<b>Natural Environment</b>		
Water Features		
Canals / Regulated Floodways	No. of Conflicts	1
Flood Hazard Areas - 100 Year Floodplain	acres	21
Wetlands (non-forested and forested)	acres	0
Potential Bald Eagle Nest	No. of Nests	0
<b>Social</b>		
Right-of-Way Area (not including proposed ponds)	Acres	24
Potential Existing Residential Impacts (includes partially impacted parcels)	Total Parcels	13
Potential Existing Commercial Impacts (includes partially impacted parcels)	Total Parcels	19
Potential Existing Parcel Impacts (Other)* (includes partially impacted parcels)	Total Parcels	13
Trails	No. of Conflicts	0
*Other = Public (County, WMD, TOHO Water Authority, School Board) and Conservation		

# Southport Connector Alternative Routes (SCAR)

- Proposed alternate routes
- Community group comprised of Poinciana residents
- Not in favor of Southport Connector being collocated with Cypress Parkway
- Concerned the Connector would divide the Poinciana community

☰

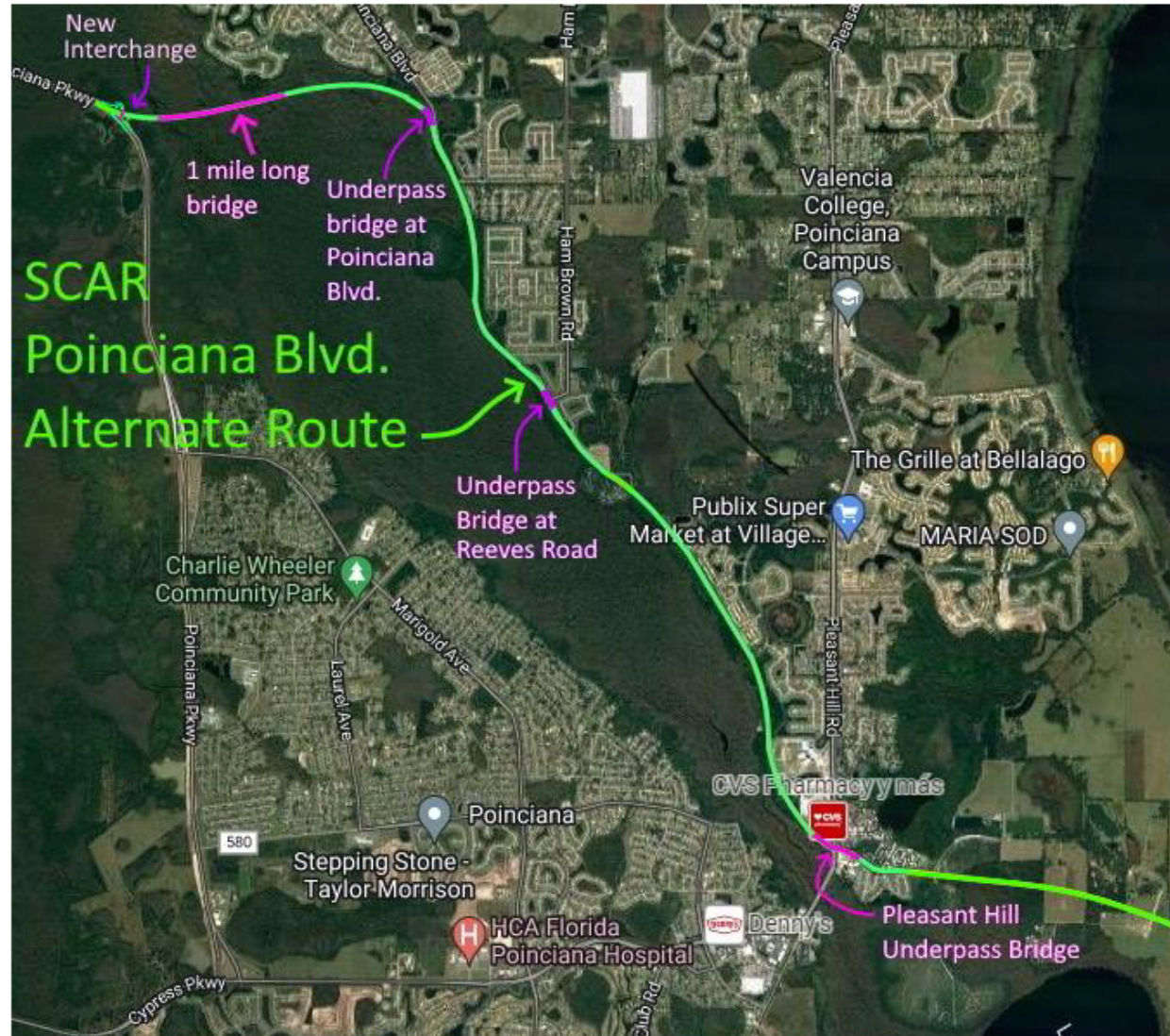
## SCAR OF POINCIANA

*Slide Show Presentation*



<https://scarofpoinciana.com>

# SCAR Alternate Route for the Southport

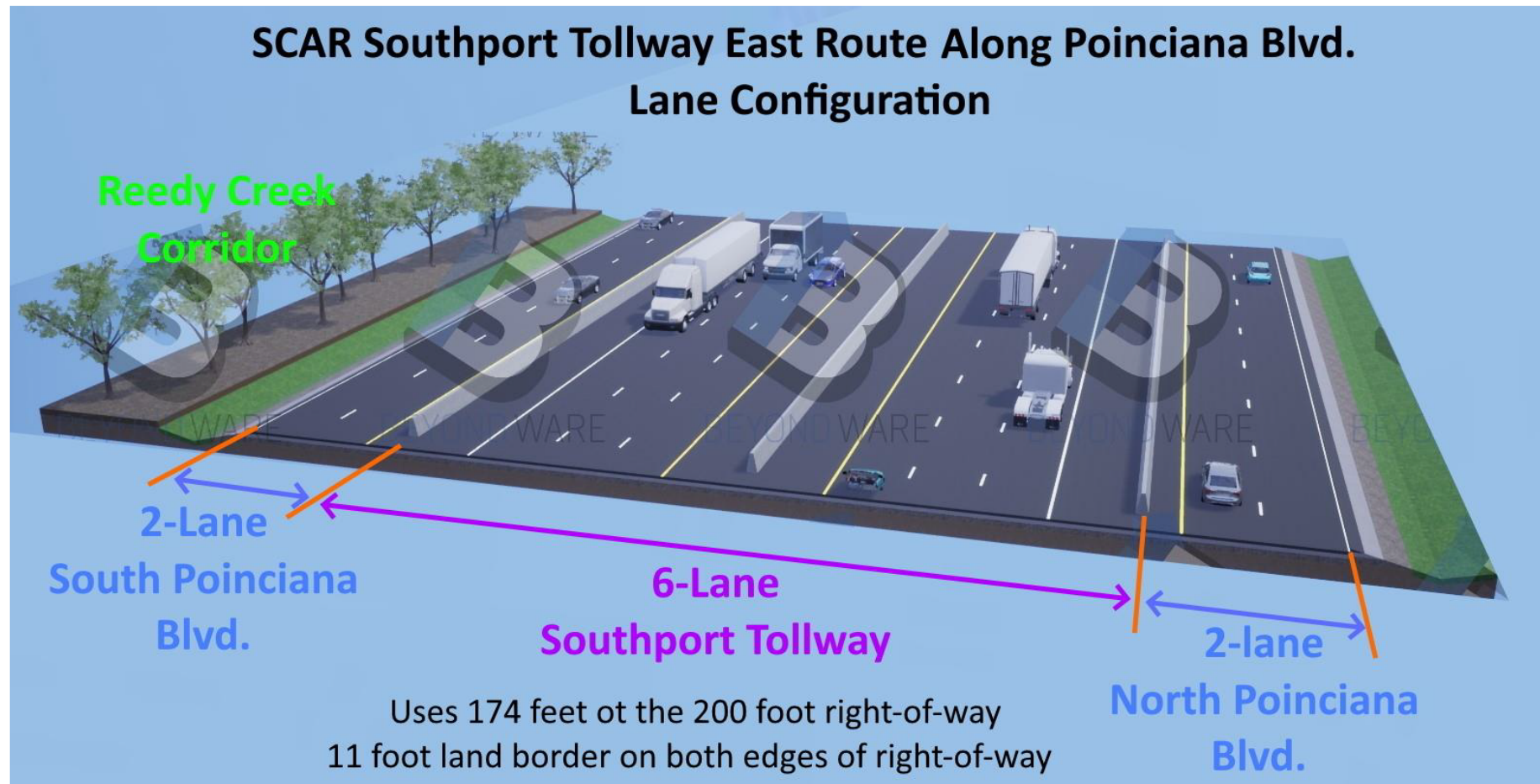


## Reedy Creek Boundary Route Alternative

- Uses Poinciana Blvd. 200 foot ROW
- 1+ mile bridge over Reedy Creek at northern end
- At ground level except for 3 tollway bridges over local intersections
- Limits access to Poinciana Blvd. from neighborhoods and High School (only right hand turns to Poinciana Blvd.)
- Doesn't divide the Poinciana town center with a 30' high walled tollway that will hurt businesses and the community
- Allows Cypress Parkway to expand to 6 lanes well before the tollway is finished

# SCAR Alternate Route Lane Configuration

The 6-lane tollway with either two lanes or an expanded 4 lanes for Poinciana Blvd will use 174 feet of the 200-foot existing right-of-way where there is no intersection. That leaves 13 feet of land buffer to private property on each side of the roadway.

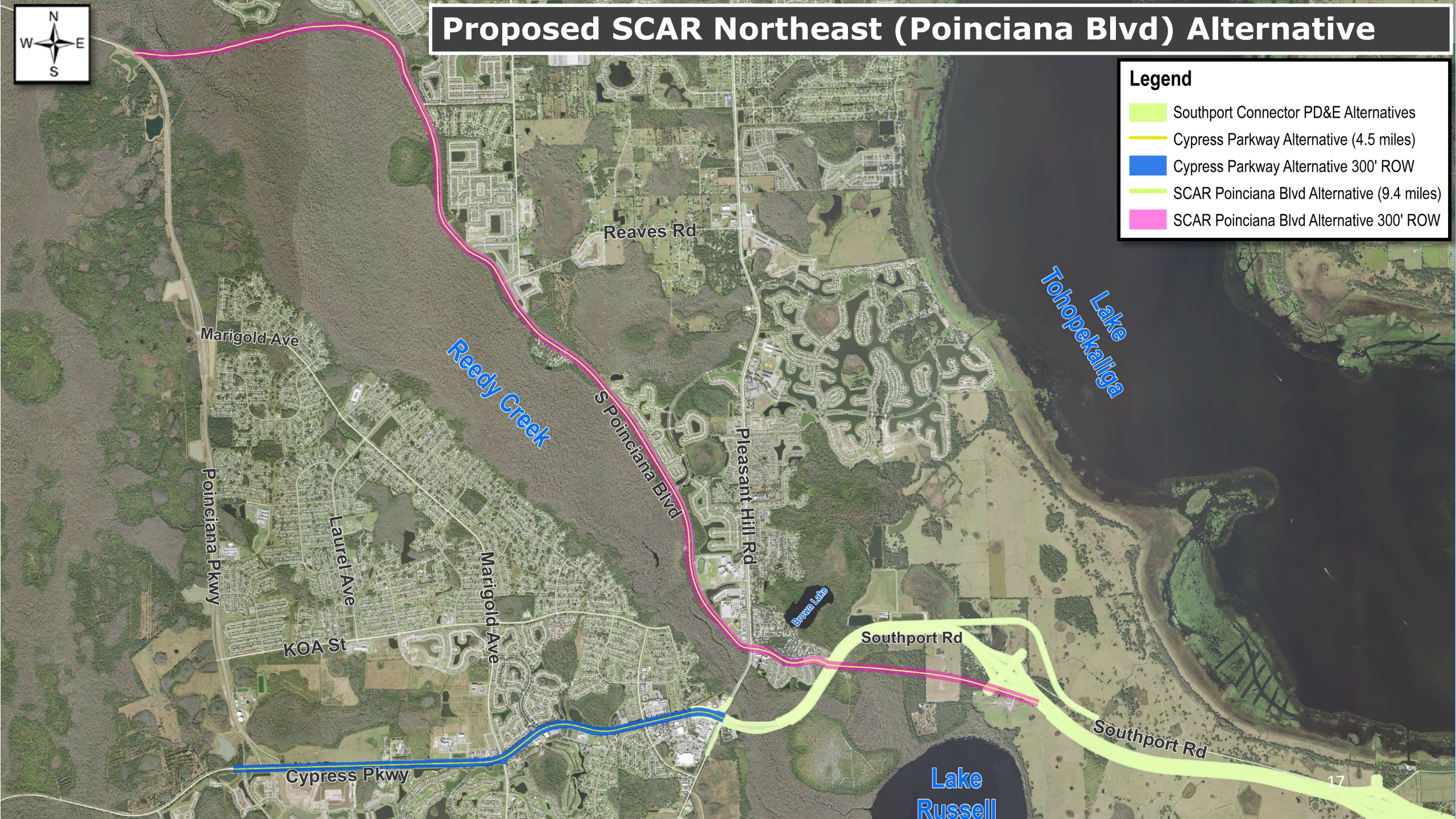


# Proposed SCAR Northeast (Poinciana Blvd) Alternative



**Legend**

- Southport Connector PD&E Alternatives
- Cypress Parkway Alternative (4.5 miles)
- Cypress Parkway Alternative 300' ROW
- SCAR Poinciana Blvd Alternative (9.4 miles)
- SCAR Poinciana Blvd Alternative 300' ROW



# SCAR Alternatives Draft Impact Comparison Matrix

**DRAFT**

Evaluation Criteria	Unit of Measure	SCAR Poinciana Blvd Alt Hold East ROW	SCAR Poinciana Blvd Alt Center	SCAR Poinciana Blvd Alt Hold West ROW
Alternative Length (approximate)	Miles	9.4	9.4	9.4
Proposed Right-of-Way Width (general: varies at interchanges and environmentally sensitive areas)	Feet	300	300	300
<b>Cultural Environment Effects</b>				
Public Lands (Recreation and Conservation)	acres	45	24	15
<b>Natural Environment</b>				
Water Features				
Canals / Regulated Floodways	No. of Conflicts	1	0	0
Flood Hazard Areas - 100 Year Floodplain	acres	182	154	152
Wetlands (non-forested and forested)	acres	207	167	167
Potential Bald Eagle Nest	No. of Nests	0	0	0
<b>Social</b>				
Right-of-Way Area (not including proposed ponds)	Acres	344	349	344
Potential Existing Residential Impacts (includes partially impacted parcels)	Total Parcels	107	171	177
Potential Existing Commercial Impacts (includes partially impacted parcels)	Total Parcels	12	14	12
Potential Existing Parcel Impacts (Other)* (includes partially impacted parcels)	Total Parcels	26	12	16
Trails	No. of Conflicts	1	1	1

\*Other = Public (County, WMD, TOHO Water Authority, School Board) and Conservation

# Next Steps

- EAG and PAG Meetings: Third Quarter of 2023
- Sociocultural Effects Evaluation: Third Quarter of 2023
- Alternatives Public Workshop: Third Quarter of 2023
- Public Hearing: First Quarter of 2024
- Board Acceptance: First Quarter of 2024

*Dates subject to change*

# Project Contact

## For more information contact:

Mary Brooks  
Public Involvement Coordinator  
407-694-5505  
[ProjectStudies@CFXway.com](mailto:ProjectStudies@CFXway.com)

Ralph Bove  
Consultant Project Manager  
321-274-4777  
[Ralph.Bove@volkert.com](mailto:Ralph.Bove@volkert.com)

CFX web address:  
[www.CFXway.com](http://www.CFXway.com)

Shortened study web address:  
<https://rb.gy/mnta4y>





**CENTRAL  
FLORIDA  
EXPRESSWAY  
AUTHORITY**

**THANK YOU!**

**D.3**

**CFX**

**LANDSCAPE**

**UPDATE**



**CENTRAL  
FLORIDA  
EXPRESSWAY  
AUTHORITY**

## **CFX LANDSCAPE SUSTAINABILITY**

Chris Bloodwell, RLA, Landscape Architect, CFX

Benjamin Baker, Senior Project Manager, Dewberry

May 25, 2023

# Sustainability

- 30 Years into the program
- Goal to be aesthetically pleasing
- Reduce water consumption
- Minimize the need for chemical applications
- Limited pruning
- Reduce Erosion



# Approach

- Florida Native/Florida Friendly
- Right Plant/Right Place
- Xeriscape
- Best Management Practices
- Robust Plant Palette



# Plant Palette

**Muhlenbergia Capillarii** Muhlygrass

**Tripsacum Dactyloides** Fakahatchee Grass

**Spartina Bakeri** Sand Cordgrass

**Agave Americana** Century Plant

**Agave Americana Medio Picta** Medio Agave

**Arachis Glabrata 'Eco Turf'** Perennial Peanut

**Agave Desmettiana** Agave Desmettiana

**Agave Blue Wave** Blue Wave Agave

**Agave Univittata** Agave Unicitatta

**Agave 'Delfer's Aloe'** Delfer's Aloe

**Agave 'White Tooth'** White Tooth Agave

**Bauhinia Punctata** Red Orchid Shrub

**Bougainvillea 'Helen Johnson'** Bougainvillea

**Viburnum Obovatum 'Mrs. Schiller's Delight'** Dwarf Viburnum

**Hydrangea Quercipolia** Oakleaf Hydrangea

**Ilex Vomitoria** Yaupon Holly

**Ilex Vomitoria 'Schilling's Dwarf'** Schilling's Dwarf Yaupon Holly

**Illicim Parviflorum** Yellow Anise

**Lantana Camara 'Gold Mound'** Gold Mound Lantana

**Lantana Montecidensis** Purple Trailing Lantana

**Lonicera Sempervirens** Coral Honeysuckle

**Oleander 'Calypso Red'** Oleander Calypso Red

**Plumbago Capensis** Plumbago

**Russelis Equisetiformis** Firecracker Plant

**Rhaphiolepis Indica** Indian Hawthorn

**Sophora Tomentosa** Necklace Pod

**Serenoa Repens** Saw Palmetto

**Serenoa Repens 'Cinerea'** Silver Saw Palmetto

**Trachelospermum Jasminoides** Confederate Jasmine



# Plant Palette

**Zamia Furfuracea** Cardboard Palm

**Zamia Pumila** Coontie

**Acer Rubrum** Flame Red Maple

**Butia Capitata** Pindo Palm

**Euphorbia Tirucalli** Pencil Cactus

**Ilex Vomitoria Pendula** Weeping Yaupon Holly

**Juniperus Virginiana Siliciola** Southern Red Cedar

**Lagerstroemia Indica 'Muskogee'** Crepe Myrtle

**Lagerstroemia Indica 'Tuscarora'** Crepe Myrtle

**Eriobotrya Japonica** Loquat

**Myrica Cerfera** Way Myrtle

**Magnolia Grandiflora** Southern Magnolia

**Magnolia Virginiana** Sweetbay Magnolia

**Pinus 'Elliottii'** Slash Pine

**Pinus Palustris** Longleaf Pine

**Pinus Taeda** Loblolly Pine

**Quercus Virginiana** Live Oak

**Quercus Virginiana 'QVIA PP 11219 Highrise'**

**Sabal Palmetto** Sabal Palm

**Taxodium Disticum 'Autumn Gold'**



# Current Implementation

## Responsible Management Practices

- Conscientious Design
- Site Specific Soil Preparation
- Responsible Maintenance





# Accomplishments

- Systemwide Plant Palette
- Native Buffer Plantings
- SR 408 Median Plantings
- Systemwide Landscape Maintenance
- Introduction of FWC permitted Grass Carp into retention ponds



# Future Sustainability Efforts

- Collaboration
- Additional sustainable plant material
- Wildflower/Pollinator Plantings
- Continue Grass Carp Program
- Trial Planting Beds



# Trial Planting Beds at CFX HQ



Questions?