

The logo for the Central Florida Expressway Authority is centered in the upper portion of the image. It consists of the words "CENTRAL FLORIDA EXPRESSWAY AUTHORITY" in a serif font. "CENTRAL FLORIDA" and "AUTHORITY" are in black, while "EXPRESSWAY" is in orange. The text is flanked by two horizontal orange bars, one above and one below.

**CENTRAL  
FLORIDA  
EXPRESSWAY  
AUTHORITY**

**Southport Connector Expressway  
Project Development & Environment (PD&E) Study**

**Environmental Stewardship Committee**

**— May 25, 2023 —**

**Ralph Bove, Volkert, Inc.**

# Goals and Objectives

- Improve connections to existing roadways
- Enhance mobility of growing population and economy
- Relieve capacity constraints along Cypress Parkway
- Accommodate future transit options
  - Local, state and regional plans
  - Close coordination with future land use development
- Promote regional connectivity
- Enhance evacuation and emergency service

# ACER Results Comparative Analysis of Alternatives



Corridor Alternative	Purpose & Need Satisfaction	Potential for Relatively High Impacts	Evaluation Matrix Weighted Score	Estimated Cost (in millions)	Recommendation for Further Consideration
2000	No	10	36.4	\$1,215	No
3000	Yes	1	58.0	\$871	Yes
4000	Yes	2	61.2	\$860	Yes
7000	Yes	2	61.4	\$863	Yes

# Southport Connector ACER Review



OSCEOLA COUNTY

POLK COUNTY

Reedy Creek

Lake Tohopekaliga

Lake Russell

Lake Gentry

Cypress Lake

BEGIN STUDY

END STUDY

ALT 3000

ALT 4000

ALT 7000

**Legend**

- Southport Connector Study Area
- Systems Interchange
- Cypress Parkway
- Alternative 3000
- Alternative 4000
- Alternative 7000
- County Boundary



Source: Esri, Maxar, Earthstar Geographics, and the GIS User Community

# Lake Russell Cultural Site Alternatives






Southport Rd

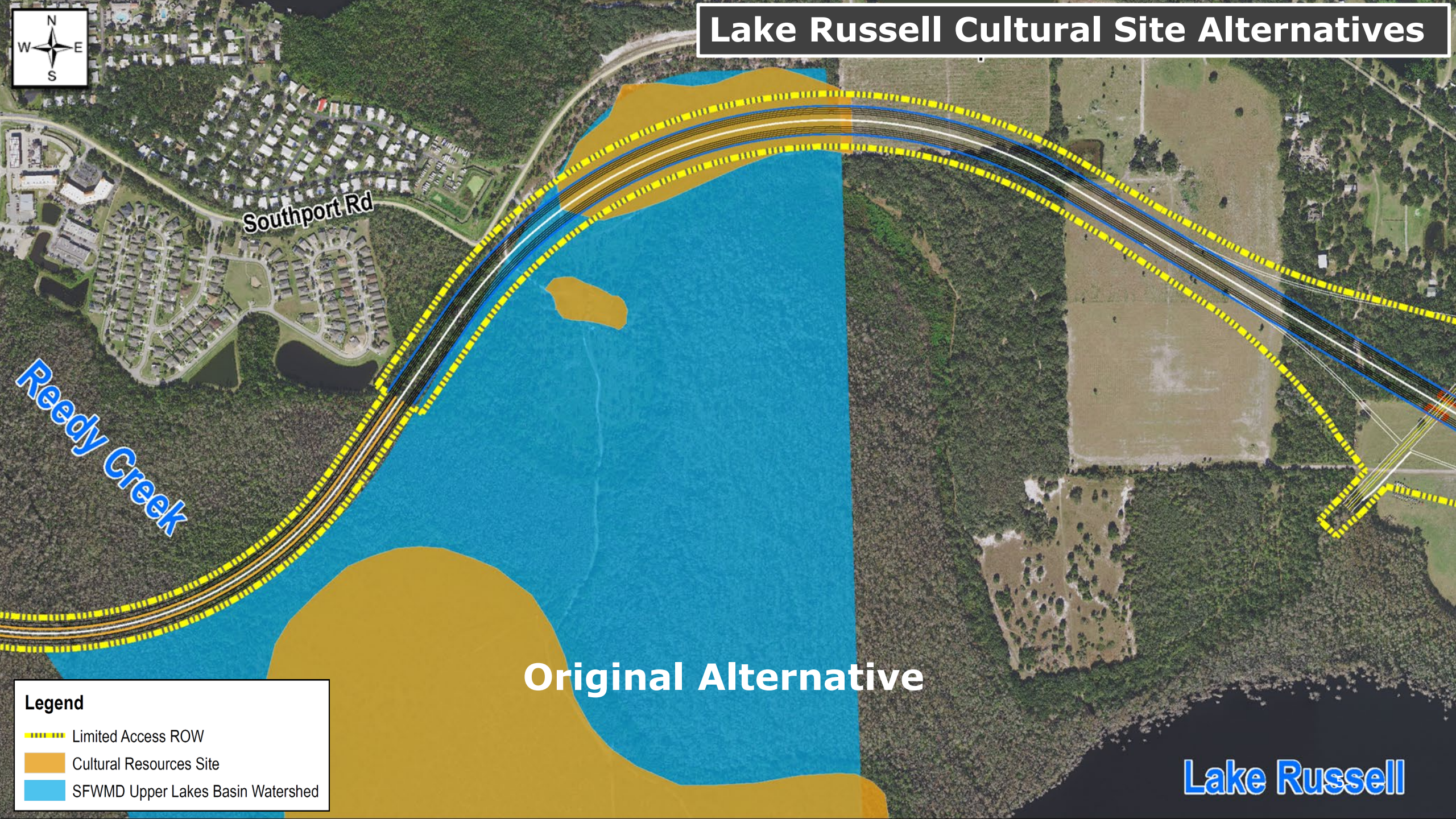
Reedy Creek

Original Alternative

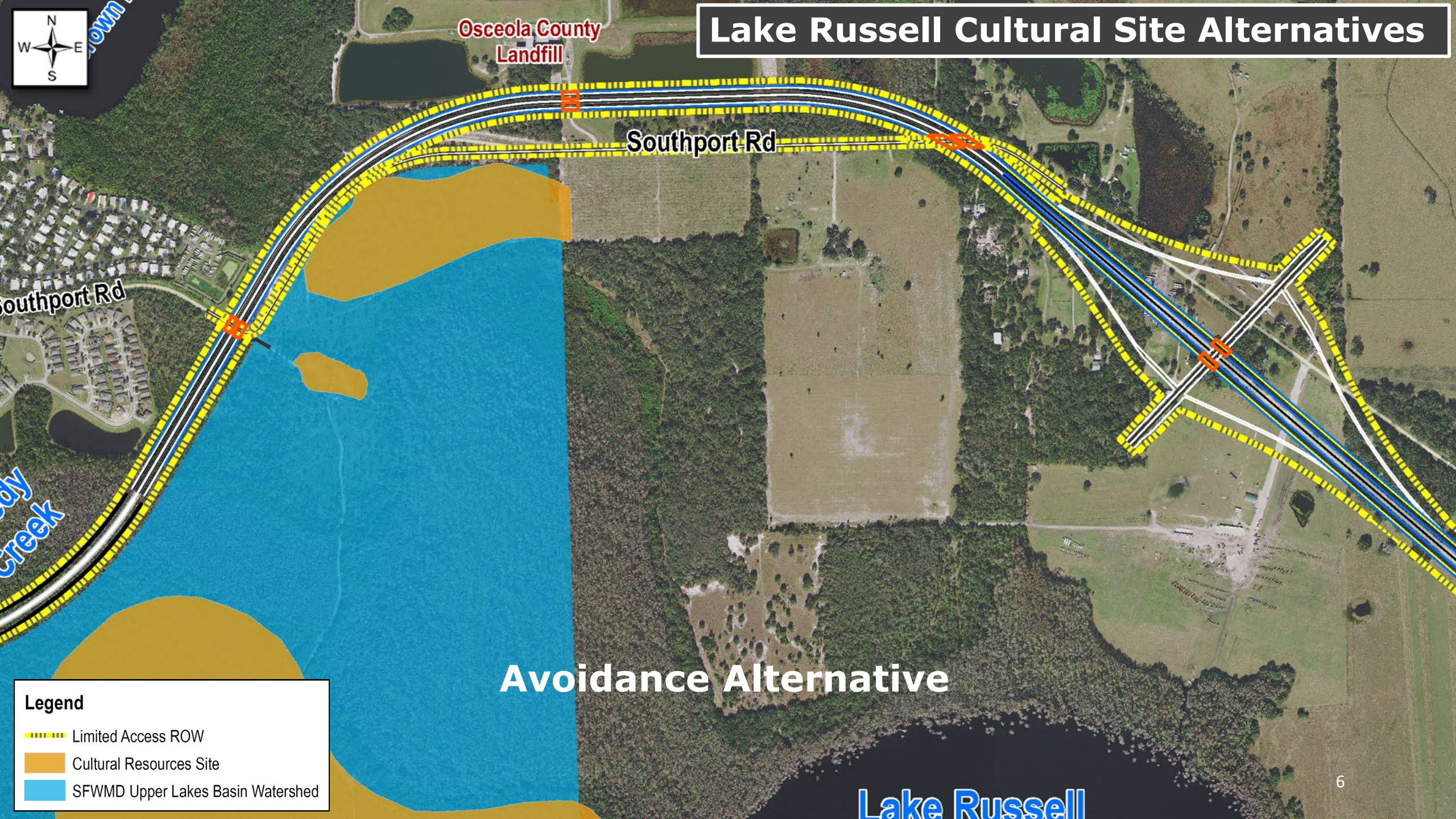
**Legend**

-  Limited Access ROW
-  Cultural Resources Site
-  SFWMD Upper Lakes Basin Watershed

Lake Russell



# Lake Russell Cultural Site Alternatives



## Avoidance Alternative

**Legend**

- Limited Access ROW
- Cultural Resources Site
- SFWMD Upper Lakes Basin Watershed

# Lake Russell Cultural Site Alternatives



Osceola County  
Landfill

Southport Rd

Potential Southport Rd  
Realignment




Southport Rd

edy  
Creek

## Minimization Alternative

## Lake Russell

**Legend**

-  Limited Access ROW
-  Cultural Resources Site
-  SFWMD Upper Lakes Basin Watershed

# Cypress Parkway Segment



OSCEOLA COUNTY

POLK COUNTY

Poinciana Pkwy

KOA St

Marigold Ave

Cypress Woods Community

Doverplum Ave

Reedy Creek

Pleasant-Hill Rd

Cypress Pkwy

Poinciana Medical Center

Polk County Fire Station

Vance Harmon Park

Publix

Poinciana Towne Center

Tierra Pointe

Bravo

SOLIVITA

Stonegate Golf Club

Marigold Ave

Country Club Rd

Pleasant-Hill Rd

**LEGEND**

- Southport Connector Expressway
- Cypress Parkway segment
- Overpass locations
- Potential locations for access ramps



# Cypress Parkway Segment



OSCEOLA COUNTY

POLK COUNTY

Poinciana Pkwy

KOA St

Marigold Ave

Cypress Woods Community

Doverplum Ave

Reedy Creek

Pleasant-Hill Rd

Cypress Pkwy

Poinciana Medical Center

CONCEPT HYBRID

Vance Harmon Park

Publix

Poinciana Towne Center

Bravo  
Tierra Pointe



Fire Station

MSE Wall

Structure

SOLIVITA

Stonegate Golf Club

Marigold Ave

Country Club Rd

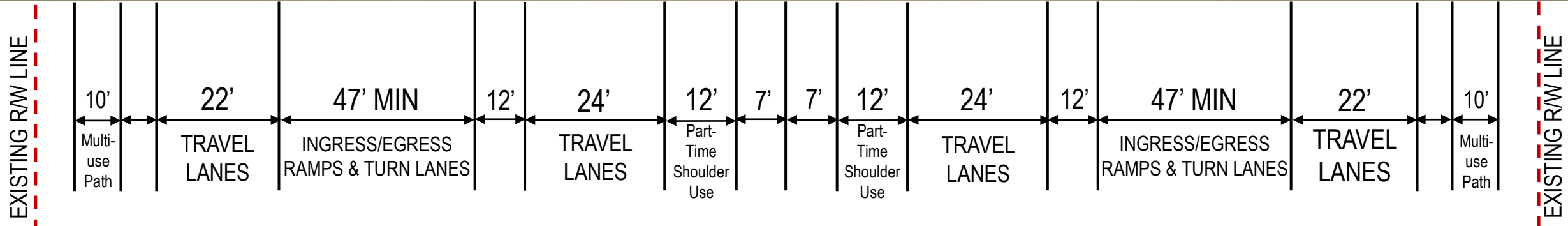
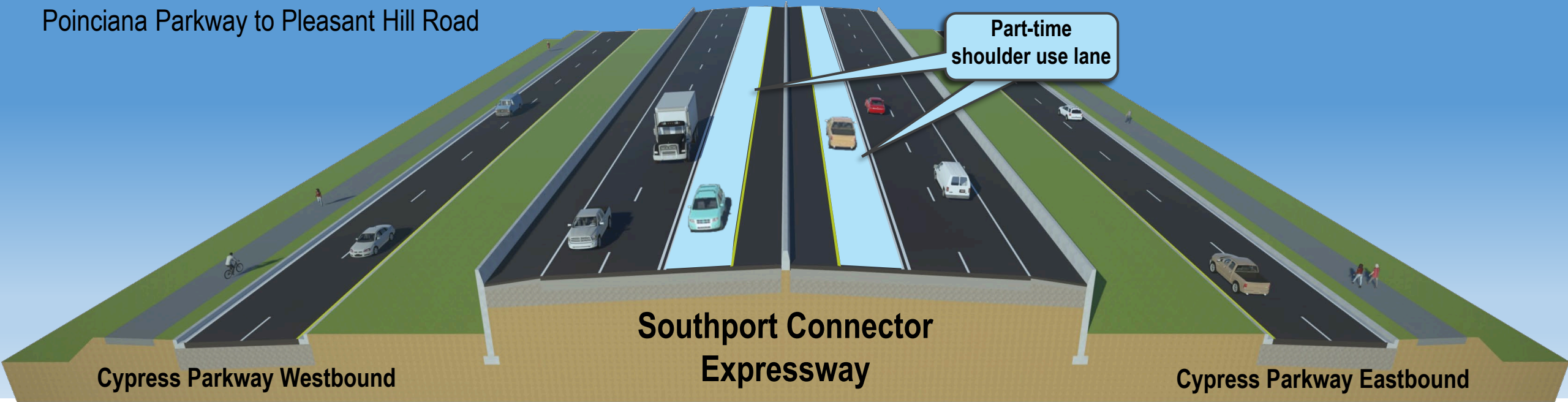
Pleasant-Hill Rd

**LEGEND**

- Southport Connector Expressway
- Cypress Parkway segment
- Overpass locations
- Potential locations for access ramps

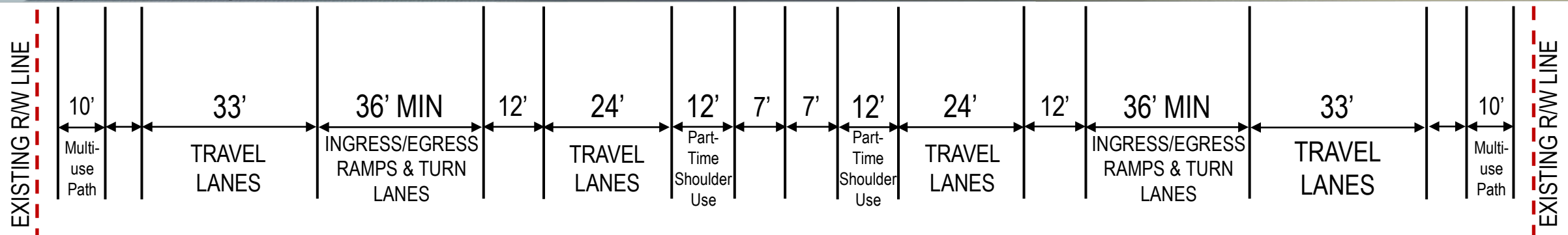
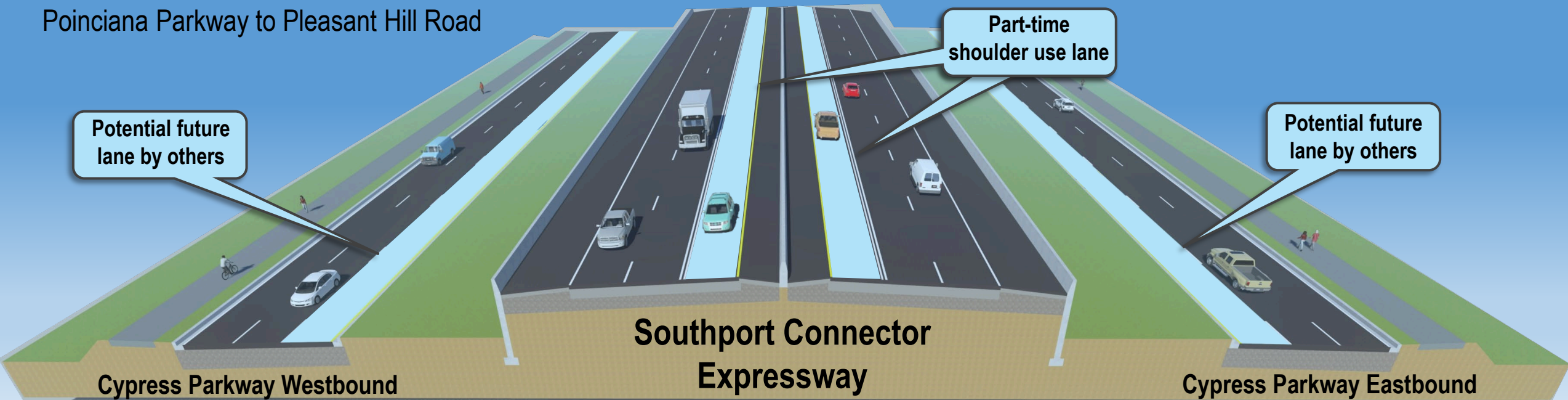
# Revised Cypress Parkway Typical Section

Poinciana Parkway to Pleasant Hill Road

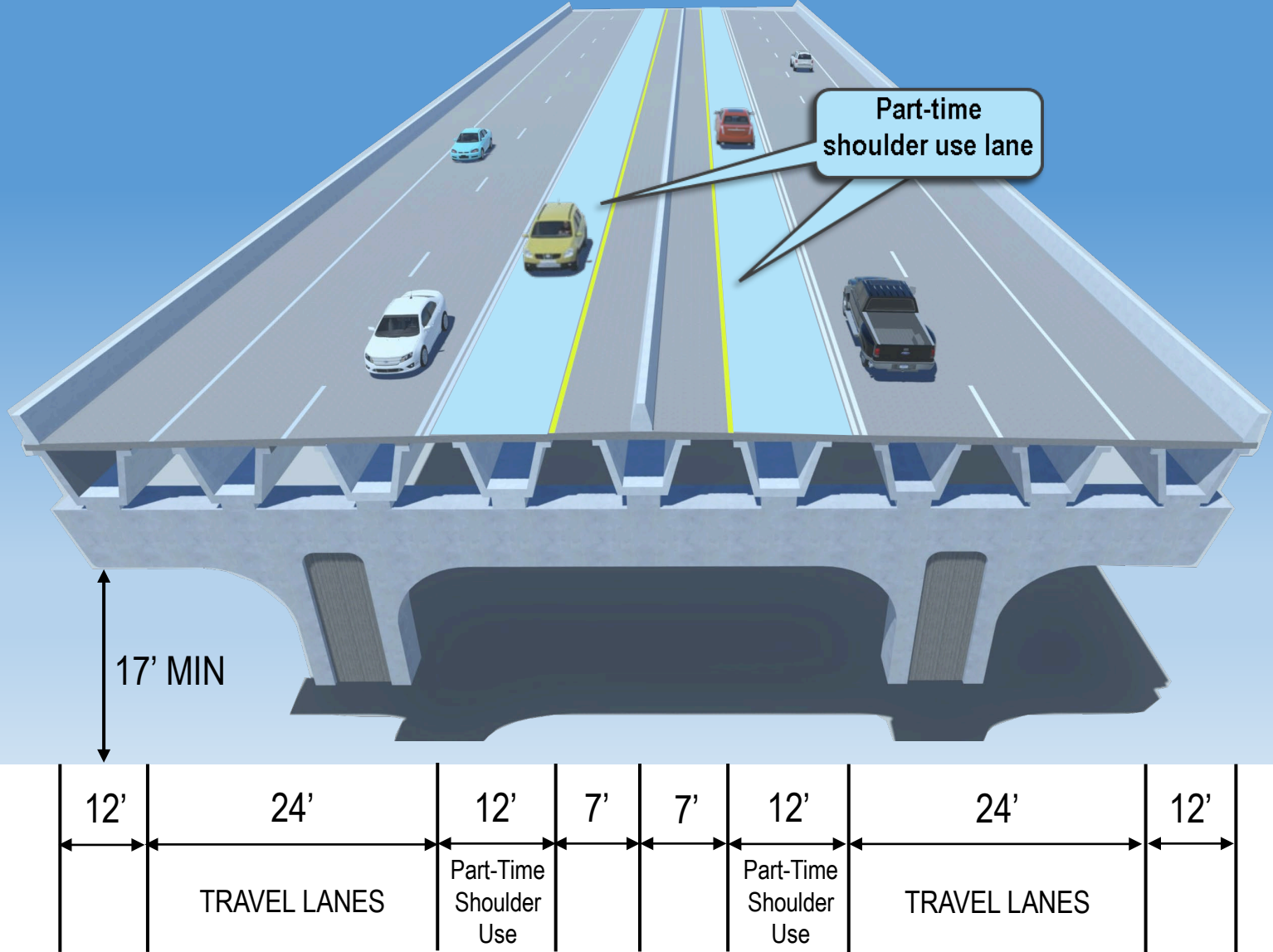


# Revised Cypress Parkway Typical Section

Poinciana Parkway to Pleasant Hill Road



# Cypress Parkway Elevated Concept



# Draft Impact Comparison Matrix: Cypress Parkway Segment

**DRAFT**

Evaluation Criteria	Unit of Measure	Cypress Parkway
Alternative Length (approximate)	Miles	4.5
Proposed Right-of-Way Width (general: varies at interchanges and environmentally sensitive areas)	Feet	300
<b>Cultural Environment Effects</b>		
Public Lands (Recreation and Conservation)	acres	0
<b>Natural Environment</b>		
Water Features		
Canals / Regulated Floodways	No. of Conflicts	1
Flood Hazard Areas - 100 Year Floodplain	acres	21
Wetlands (non-forested and forested)	acres	0
Potential Bald Eagle Nest	No. of Nests	0
<b>Social</b>		
Right-of-Way Area (not including proposed ponds)	Acres	24
Potential Existing Residential Impacts (includes partially impacted parcels)	Total Parcels	13
Potential Existing Commercial Impacts (includes partially impacted parcels)	Total Parcels	19
Potential Existing Parcel Impacts (Other)* (includes partially impacted parcels)	Total Parcels	13
Trails	No. of Conflicts	0
*Other = Public (County, WMD, TOHO Water Authority, School Board) and Conservation		

# Southport Connector Alternative Routes (SCAR)

- Proposed alternate routes
- Community group comprised of Poinciana residents
- Not in favor of Southport Connector being collocated with Cypress Parkway
- Concerned the Connector would divide the Poinciana community

☰

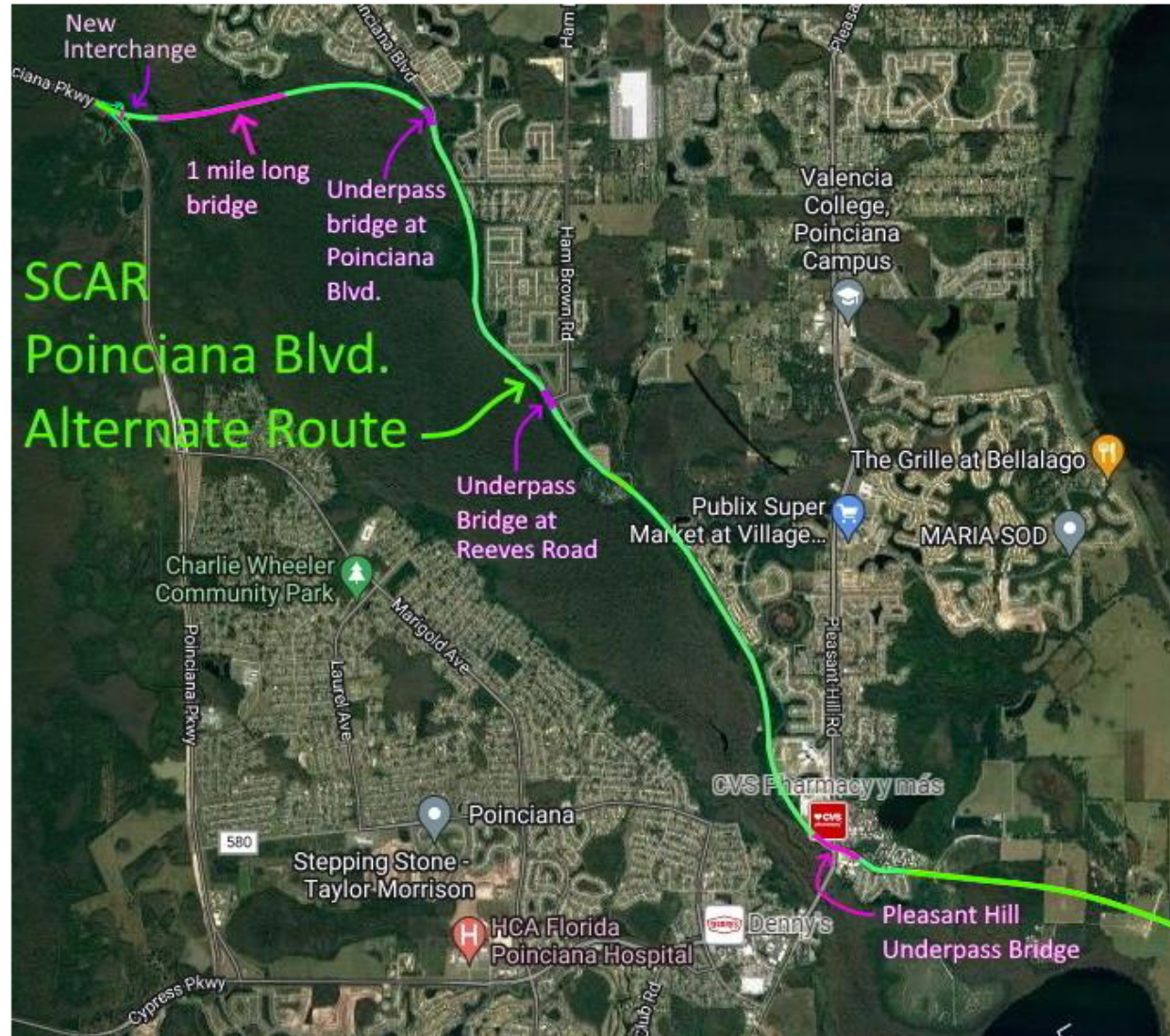
## SCAR OF POINCIANA

*Slide Show Presentation*



<https://scarofpoinciana.com>

# SCAR Alternate Route for the Southport

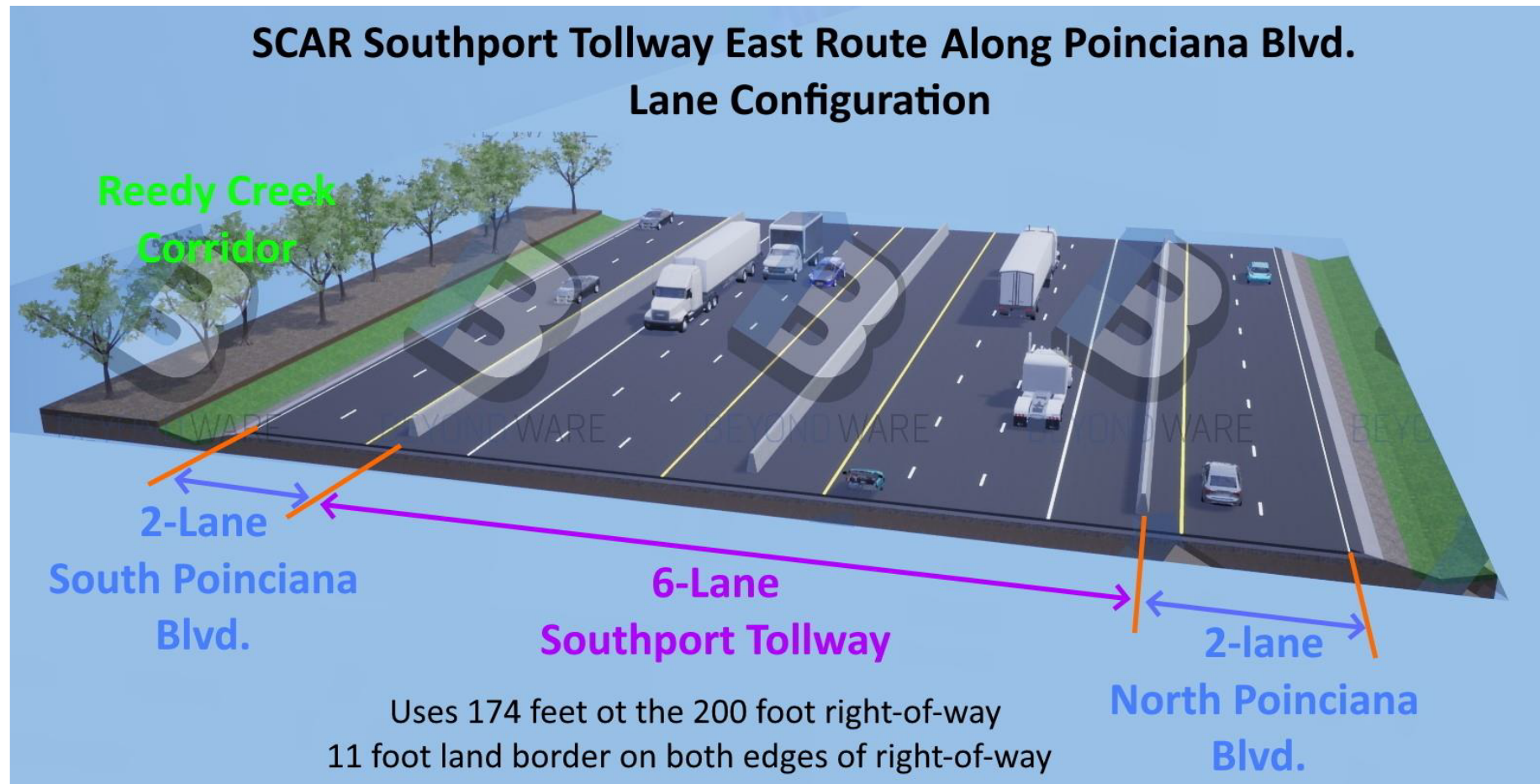


## Reedy Creek Boundary Route Alternative

- Uses Poinciana Blvd. 200 foot ROW
- 1+ mile bridge over Reedy Creek at northern end
- At ground level except for 3 tollway bridges over local intersections
- Limits access to Poinciana Blvd. from neighborhoods and High School (only right hand turns to Poinciana Blvd.)
- Doesn't divide the Poinciana town center with a 30' high walled tollway that will hurt businesses and the community
- Allows Cypress Parkway to expand to 6 lanes well before the tollway is finished

# SCAR Alternate Route Lane Configuration

The 6-lane tollway with either two lanes or an expanded 4 lanes for Poinciana Blvd will use 174 feet of the 200-foot existing right-of-way where there is no intersection. That leaves 13 feet of land buffer to private property on each side of the roadway.



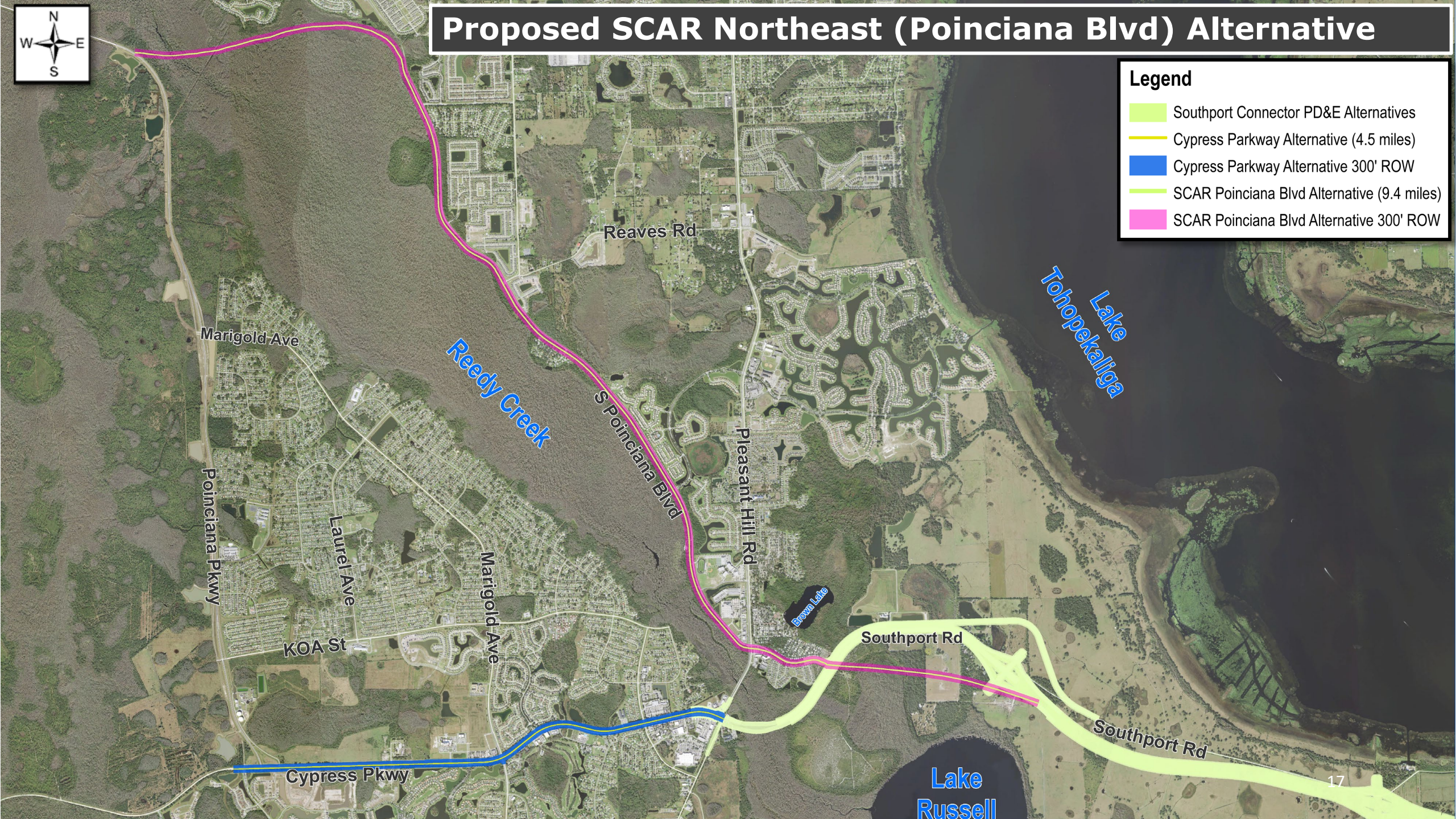


# Proposed SCAR Northeast (Poinciana Blvd) Alternative



**Legend**

- Southport Connector PD&E Alternatives
- Cypress Parkway Alternative (4.5 miles)
- Cypress Parkway Alternative 300' ROW
- SCAR Poinciana Blvd Alternative (9.4 miles)
- SCAR Poinciana Blvd Alternative 300' ROW



# SCAR Alternatives Draft Impact Comparison Matrix

**DRAFT**

Evaluation Criteria	Unit of Measure	SCAR Poinciana Blvd Alt Hold East ROW	SCAR Poinciana Blvd Alt Center	SCAR Poinciana Blvd Alt Hold West ROW
Alternative Length (approximate)	Miles	9.4	9.4	9.4
Proposed Right-of-Way Width (general: varies at interchanges and environmentally sensitive areas)	Feet	300	300	300
<b>Cultural Environment Effects</b>				
Public Lands (Recreation and Conservation)	acres	45	24	15
<b>Natural Environment</b>				
Water Features				
Canals / Regulated Floodways	No. of Conflicts	1	0	0
Flood Hazard Areas - 100 Year Floodplain	acres	182	154	152
Wetlands (non-forested and forested)	acres	207	167	167
Potential Bald Eagle Nest	No. of Nests	0	0	0
<b>Social</b>				
Right-of-Way Area (not including proposed ponds)	Acres	344	349	344
Potential Existing Residential Impacts (includes partially impacted parcels)	Total Parcels	107	171	177
Potential Existing Commercial Impacts (includes partially impacted parcels)	Total Parcels	12	14	12
Potential Existing Parcel Impacts (Other)* (includes partially impacted parcels)	Total Parcels	26	12	16
Trails	No. of Conflicts	1	1	1

\*Other = Public (County, WMD, TOHO Water Authority, School Board) and Conservation

# Next Steps

- EAG and PAG Meetings: Third Quarter of 2023
- Sociocultural Effects Evaluation: Third Quarter of 2023
- Alternatives Public Workshop: Third Quarter of 2023
- Public Hearing: First Quarter of 2024
- Board Acceptance: First Quarter of 2024

*Dates subject to change*

# Project Contact

## For more information contact:

Mary Brooks  
Public Involvement Coordinator  
407-694-5505  
[ProjectStudies@CFXway.com](mailto:ProjectStudies@CFXway.com)

Ralph Bove  
Consultant Project Manager  
321-274-4777  
[Ralph.Bove@volkert.com](mailto:Ralph.Bove@volkert.com)

CFX web address:  
[www.CFXway.com](http://www.CFXway.com)

Shortened study web address:  
<https://rb.gy/mnta4y>



**CENTRAL  
FLORIDA  
EXPRESSWAY  
AUTHORITY**

**THANK YOU!**