

SR 528 DALLAS BLVD INTERCHANGE - ALTERNATIVE 1 (ROUNABOUT)

SR 528  
DALLAS BLVD  
INTERCHANGE

ROAD NO.	PROJECT NO.
SR 528	528-307



SHEET  
NO.

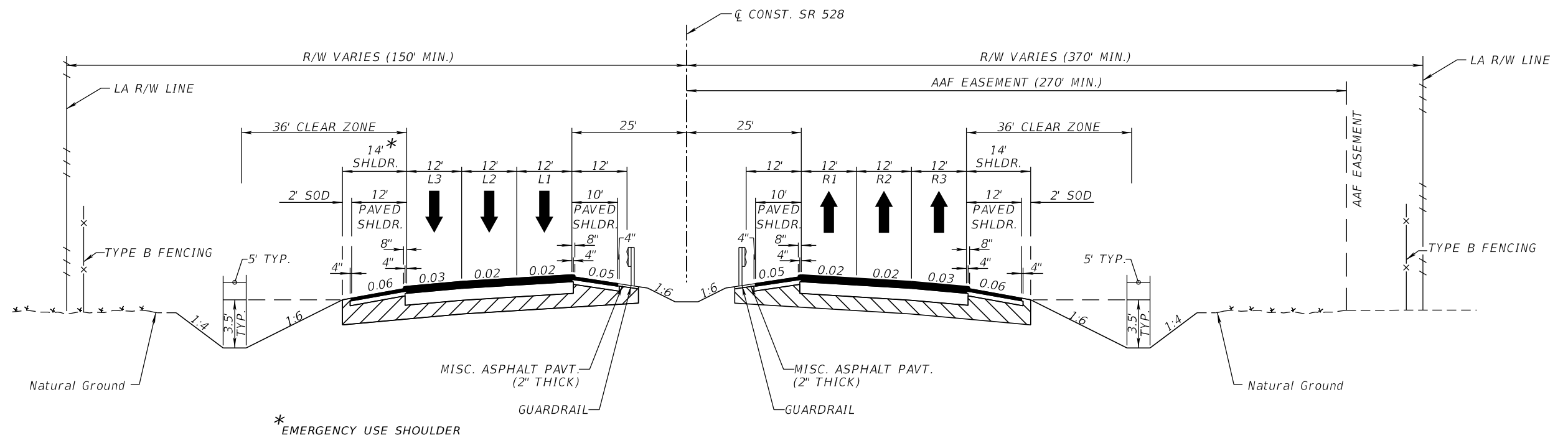
001

U:\CFX\_001844\Task04\_528-307\_Roadway\TYP\SR001.dgn

4:15:31 PM

7/21/2023

JKiriazes



**TYPICAL SECTION 1**  
**SR 528 (BEACHLINE EXPRESSWAY)**

STA. TBD TO STA. TBD  
DESIGN SPEED = 70 MPH

ALTERNATIVE # 1 - ROUNDABOUT INTERCHANGE

REVISIONS			
DATE	DESCRIPTION	DATE	DESCRIPTION

The Balmoral Group  
165 Lincoln Avenue  
Winter Park, FL 32789  
Phone: (407) 629-2185  
www.balmoralgroup.us

SR 528 DALLAS BLVD INTERCHANGE	
ROAD NO.	PROJECT NO.
SR 528	528-307

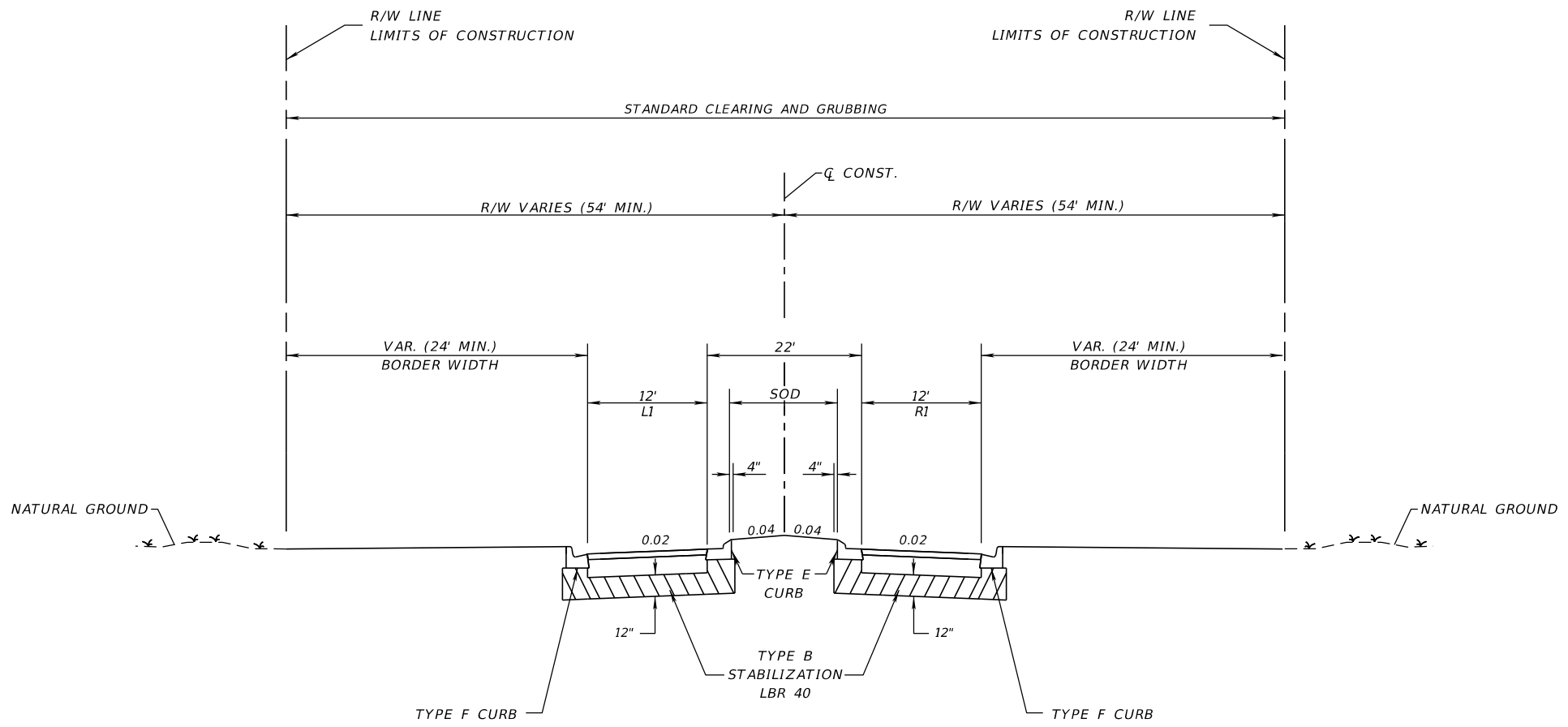
**CENTRAL  
FLORIDA  
EXPRESSWAY  
AUTHORITY**

*TYPICAL SECTION*

SHEET NO.

002

U:\CFX\_001844\Task\04\_528-307\_Dallas Blvd\_IC\528-307\_Roadway\TYP\SRD01.dgn 4:15:31 PM 7/21/2023 JKiriazes



**TYPICAL SECTION 2  
DALLAS BOULEVARD**  
**TYPICAL SECTION IS BASED ON DESIGN ELEMENTS  
FROM THE CONSTRUCTED AAF BRIDGE (SOUTH OF SR 528)**  
 STA. TBD TO STA. TBD  
 DESIGN SPEED = 45 MPH

\*SIDEWALK REPLACES BIKE LANE AS PART OF BICYCLE BYPASS.  
 BICYCLE SLIP LANE INTRODUCED UPSTREAM OF TURN LANE TAPER.

ALTERNATIVE # 1 - ROUNDABOUT INTERCHANGE

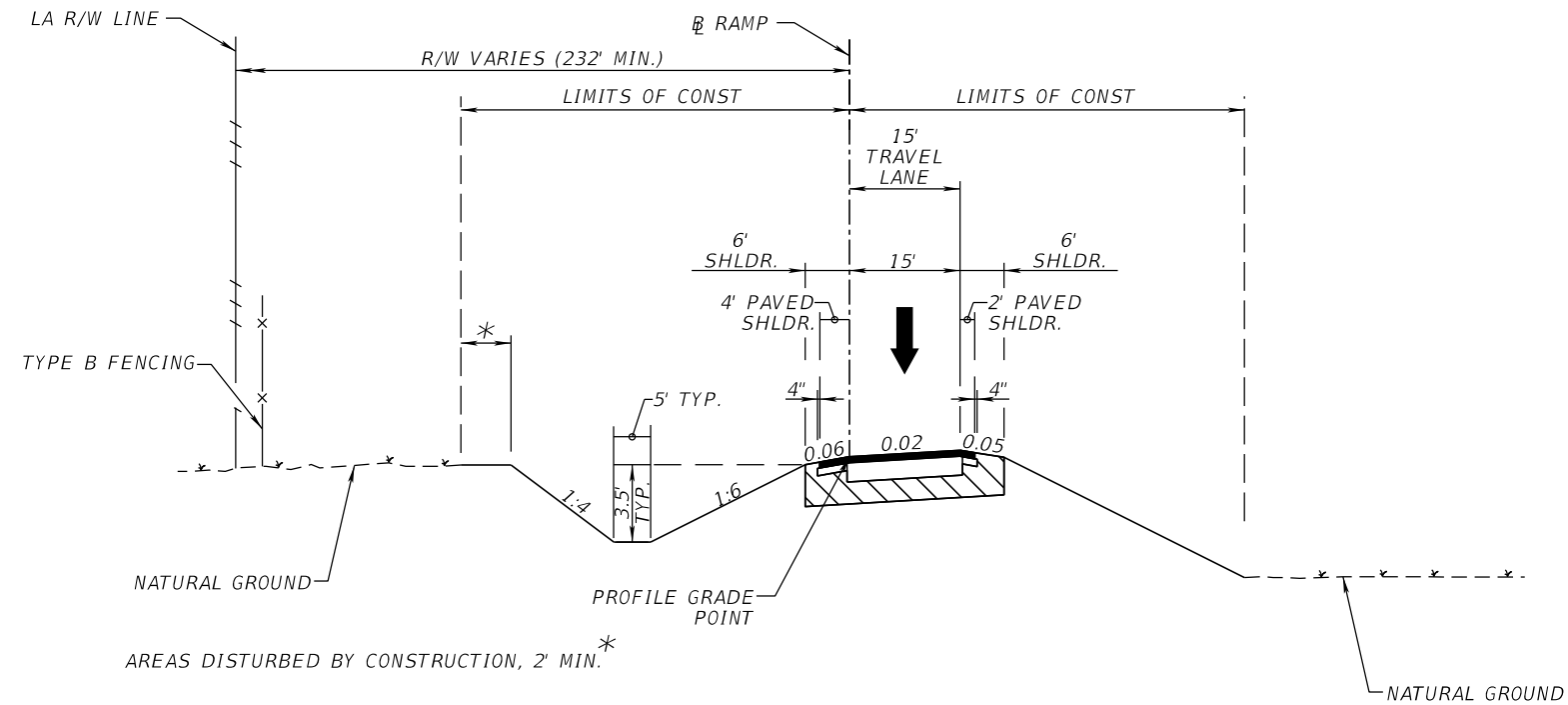
REVISIONS				The Balmoral Group 165 Lincoln Avenue Winter Park, FL 32789 Phone: (407) 629-2185 www.balmoralgroup.us	SR 528 DALLAS BLVD INTERCHANGE			TYPICAL SECTION	SHEET NO.
DATE	DESCRIPTION	DATE	DESCRIPTION		ROAD NO.	PROJECT NO.			
					SR 528	528-307			

U:\CFX\_001844\Task04\_528-307\_Dallas Blvd\_IC\528-307\_Roadway\TYP\SRD01.dgn

4:15:32 PM

7/21/2023

JKiriaees



**TYPICAL SECTION 3  
RAMP A (WB ON-RAMP)  
RAMP D (WB OFF-RAMP)**

STA. TBD TO STA. TBD  
DESIGN SPEED = 50 MPH

ALTERNATIVE # 1 - ROUNDABOUT INTERCHANGE

REVISIONS			
DATE	DESCRIPTION	DATE	DESCRIPTION

The Balmoral Group  
165 Lincoln Avenue  
Winter Park, FL 32789  
Phone: (407) 629-2185  
www.balmoralgroup.us

SR 528  
DALLAS BLVD  
INTERCHANGE

ROAD NO.	PROJECT NO.
SR 528	528-307

**CENTRAL  
FLORIDA  
EXPRESSWAY  
AUTHORITY**

TYPICAL SECTION

SHEET NO.

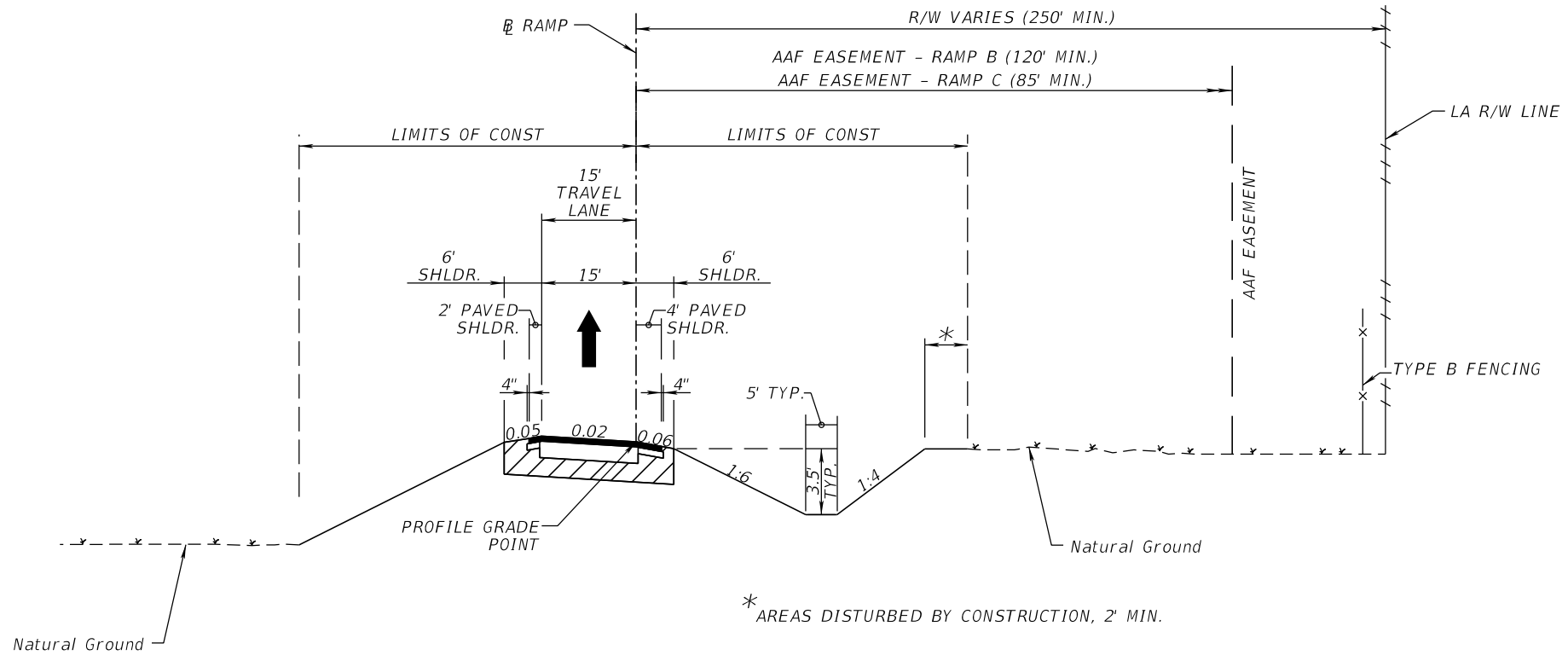
004

U:\CFX\_001844\Task04\_528-307\_Dallas Blvd\_IC\528-307\_Roadway\TYP\SRD01.dgn

4:15:32 PM

7/21/2023

JKiriazes



**TYPICAL SECTION 4  
RAMP B (EB OFF-RAMP)  
RAMP C (EB ON-RAMP)**

STA. TBD TO STA. TBD  
DESIGN SPEED = 50 MPH

ALTERNATIVE # 1 - ROUNDABOUT INTERCHANGE

REVISIONS			
DATE	DESCRIPTION	DATE	DESCRIPTION

The Balmoral Group  
165 Lincoln Avenue  
Winter Park, FL 32789  
Phone: (407) 629-2185  
www.balmoralgroup.us

SR 528  
DALLAS BLVD  
INTERCHANGE

ROAD NO.	PROJECT NO.
SR 528	528-307

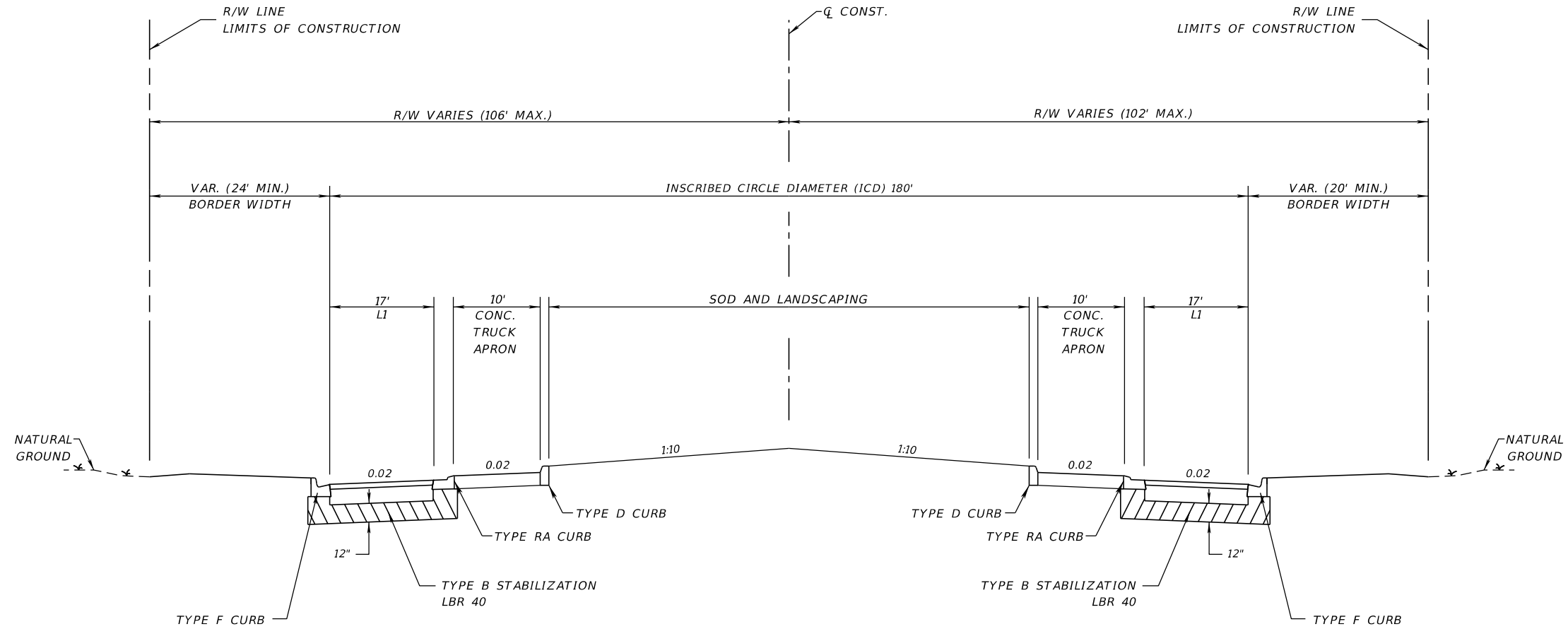
**CENTRAL  
FLORIDA  
EXPRESSWAY  
AUTHORITY**

TYPICAL SECTION

SHEET NO.

005

U:\CFX\_001844\Task04\_528-307\_Dallas Blvd\_IC\_528-307\_Roadway\TYP5RD01.dgn 4:15:32 PM 7/21/2023 JKiriazes



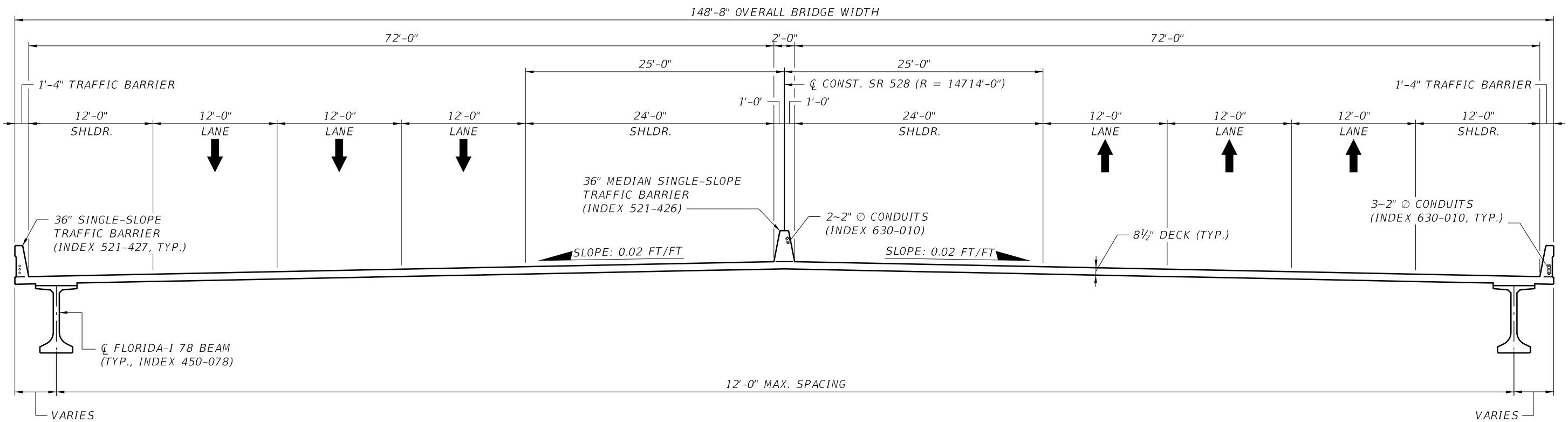
**TYPICAL SECTION 5**  
**DALLAS BOULEVARD**  
**(CIRCULATORY AND CONNECTING ROADWAYS)**  
**TYPICAL SECTION IS BASED ON DESIGN ELEMENTS**  
**FROM THE CONSTRUCTED AAF BRIDGE (SOUTH OF SR 528)**

\*SIDEWALK REPLACES BIKE LANE  
 AS PART OF BICYCLE BYPASS.  
 BICYCLE SLIP LANE INTRODUCED  
 UPSTREAM OF TURN LANE TAPER.

STA. TBD TO STA. TBD  
 DESIGN SPEED = 45 MPH

ALTERNATIVE # 1 - ROUNDABOUT INTERCHANGE

REVISIONS				The Balmoral Group 165 Lincoln Avenue Winter Park, FL 32789 Phone: (407) 629-2185 www.balmoralgroup.us	SR 528 DALLAS BLVD INTERCHANGE			TYPICAL SECTION	SHEET NO.
DATE	DESCRIPTION	DATE	DESCRIPTION		ROAD NO.	PROJECT NO.			
					SR 528	528-307			



**TYPICAL SECTION 6**  
(LOOKING UPSTATION)

NOTE:  
1. ALL TRANSVERSE DIMENSIONS ARE MEASURED PERPENDICULAR TO  $\hat{C}$  CONST. SR 528.

ALTERNATIVE # 1 - ROUNDABOUT INTERCHANGE

BRIDGE NO. XXXXXX

REVISIONS						DRAWN BY: AER	CENTRAL FLORIDA EXPRESSWAY AUTHORITY	SHEET TITLE: TYPICAL SECTION THROUGH BRIDGE DECK	REF. DWG. NO.
DATE	BY	DESCRIPTION	DATE	BY	DESCRIPTION				
						CHECKED BY: RK/KTZ	ROAD NO. SR 528	PROJECT NO. 528-307	SHEET NO. 007
BASE CONSULTANTS, INC. 1214 EAST CONCORD STREET ORLANDO, FL. 32803 PH: 407-377-7227 AARON EDWARD RANK, P.E. 77706						<b>CENTRAL FLORIDA EXPRESSWAY AUTHORITY</b>		PROJECT NAME: SR 528 OVER DALLAS BOULEVARD SR 528/DALLAS BOULEVARD INTERCHANGE	

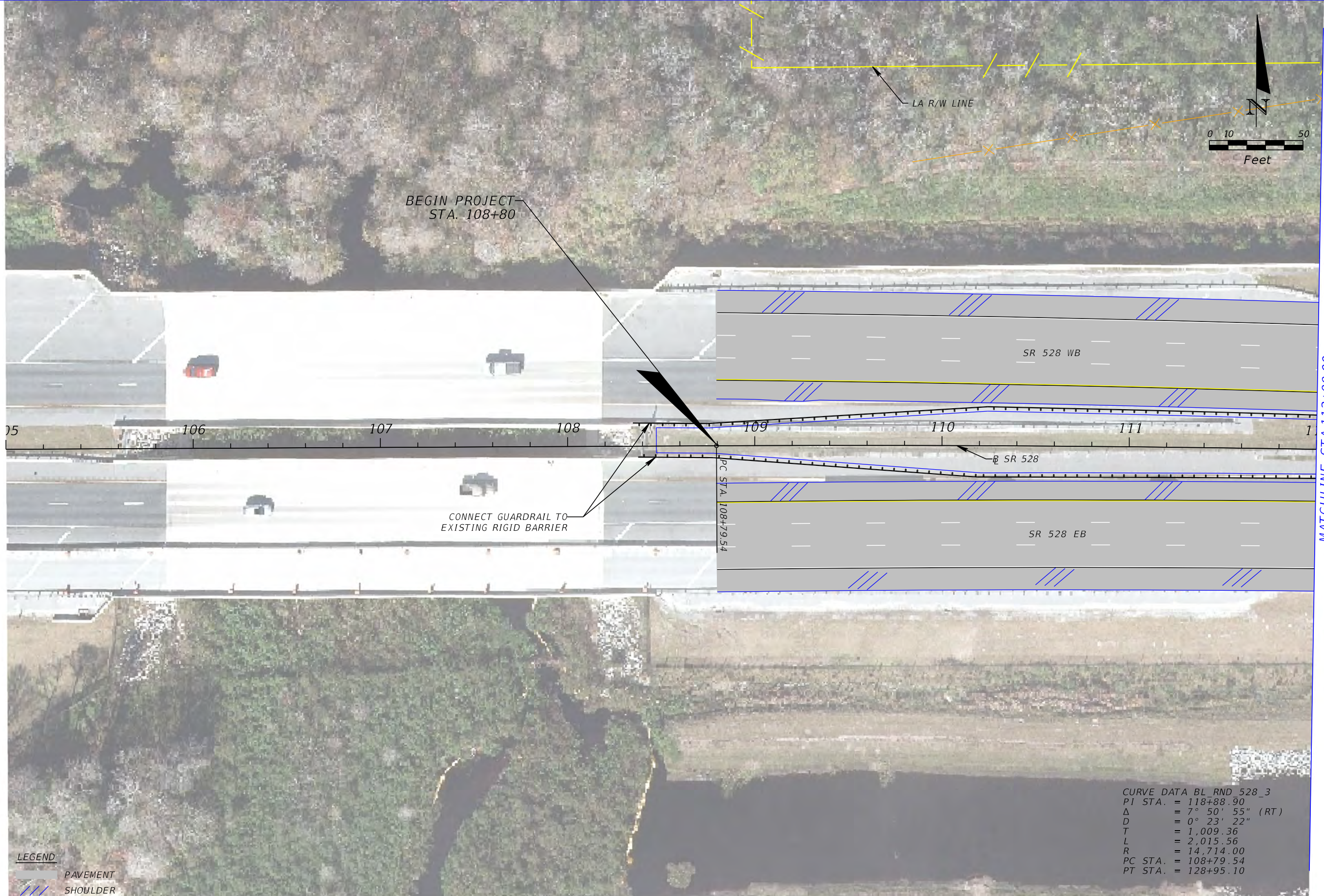
THE OFFICIAL RECORD OF THIS SHEET IS THE ELECTRONIC FILE DIGITALLY SIGNED AND SEALED UNDER RULE 61G15-23.004, F.A.C.

U:\CFX\_001844\Task04\_528-307\_Dallas Blvd\_IC\528-307\_Roadway\PLAN\RD01.dgn

4:50:27 PM

7/21/2023

JKirraes



**LEGEND**

	PAVEMENT
	SHOULDER

CURVE DATA BL RND 528\_3  
 PI STA. = 118+88.90  
 $\Delta$  = 7° 50' 55" (RT)  
 D = 0° 23' 22"  
 T = 1,009.36  
 L = 2,015.56  
 R = 14,714.00  
 PC STA. = 108+79.54  
 PT STA. = 128+95.10

REVISIONS			
DATE	DESCRIPTION	DATE	DESCRIPTION

The Balmoral Group  
 165 Lincoln Avenue  
 Winter Park, FL 32789  
 Phone: (407) 629-2185  
 www.balmoralgroup.us

SR 528 DALLAS BLVD INTERCHANGE	
ROAD NO.	PROJECT NO.
SR 528	528-307



**ROADWAY PLANS**  
**MAINLINE**

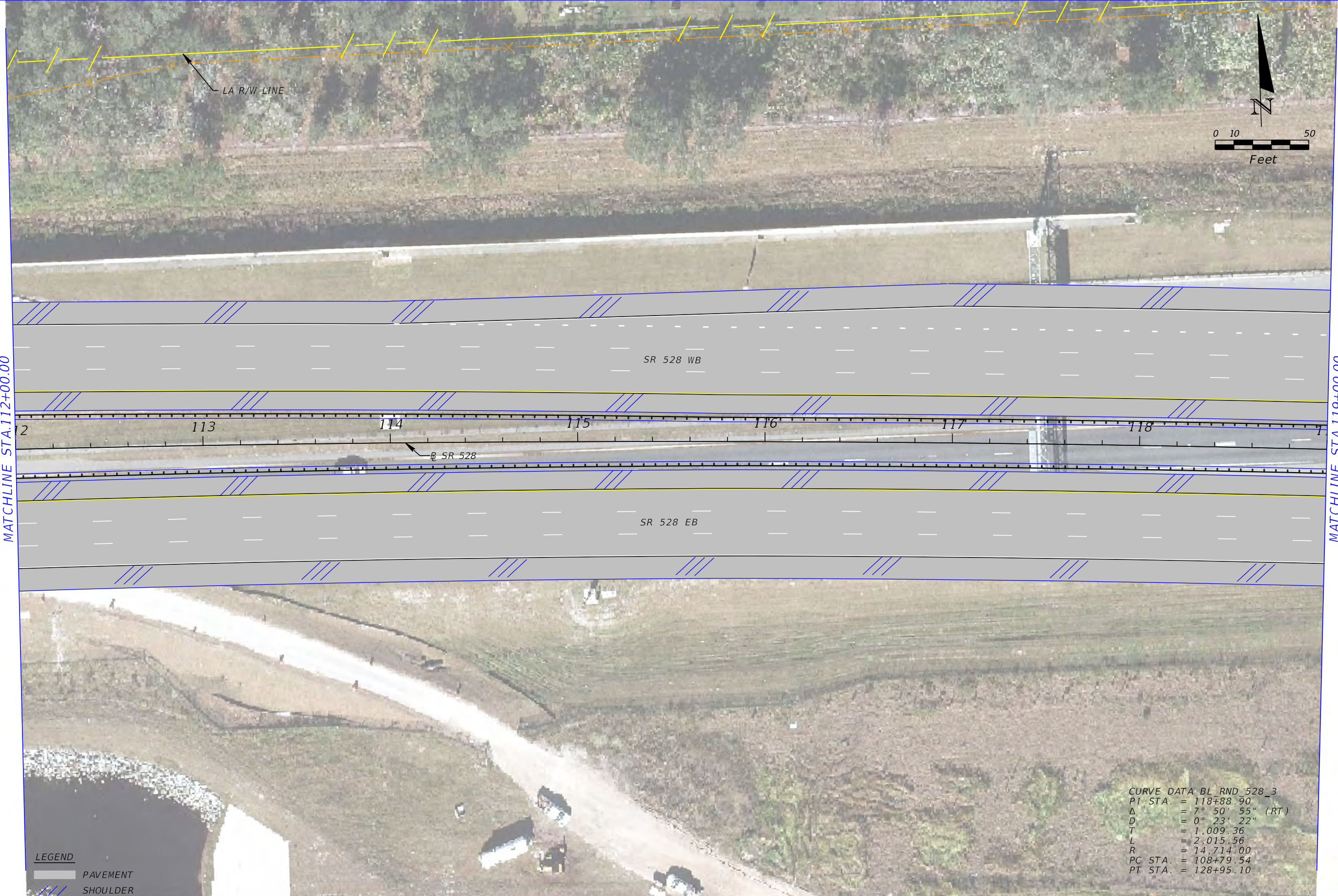
SHEET NO.  
008



U:\CFX\_001844\Task04\_528-307\_Dallas Blvd\_IC\528-307\_Roadway\PLAN\RD01.dgn 4:40:37 PM 7/21/2023 JKirraees

MATCHLINE STA.112+00.00

MATCHLINE STA.119+00.00



**LEGEND**  
 [Symbol] PAVEMENT  
 [Symbol] SHOULDER

CURVE DATA BL RND 528\_3  
 PI STA. = 118+88.90  
 Δ = 7° 50' 55" (RT)  
 D = 0° 23' 22"  
 T = 1,009.36  
 L = 2,015.56  
 R = 14,714.00  
 PC STA. = 108+79.54  
 PT STA. = 128+95.10

REVISIONS			
DATE	DESCRIPTION	DATE	DESCRIPTION

The Balmoral Group  
 165 Lincoln Avenue  
 Winter Park, FL 32789  
 Phone: (407) 629-2185  
 www.balmoralgroup.us

SR 528 DALLAS BLVD INTERCHANGE	
ROAD NO.	PROJECT NO.
SR 528	528-307



**ROADWAY PLANS**  
**MAINLINE**

SHEET NO.  
 009

U:\CFX\_001844\Task04\_528-307\_Dallas Blvd\_IC\528-307\_Roadway\PLAN\RD01.dgn

4:40:38 PM

7/21/2023

JKiriazes

MATCHLINE STA.119+00.00

MATCHLINE STA.126+00.00



**LEGEND**

- PAVEMENT
- SHOULDER

CURVE DATA BL\_RND\_528\_3  
 PI STA. = 118+88.90  
 Δ = 7° 50' 55" (RT)  
 D = 0° 23' 22"  
 T = 1,009.36  
 L = 2,015.56  
 R = 14,714.00  
 PC STA. = 108+79.54  
 PT STA. = 128+95.10

REVISIONS			
DATE	DESCRIPTION	DATE	DESCRIPTION

The Balmoral Group  
 165 Lincoln Avenue  
 Winter Park, FL 32789  
 Phone: (407) 629-2185  
 www.balmoralgroup.us

SR 528 DALLAS BLVD INTERCHANGE	
ROAD NO. SR 528	PROJECT NO. 528-307



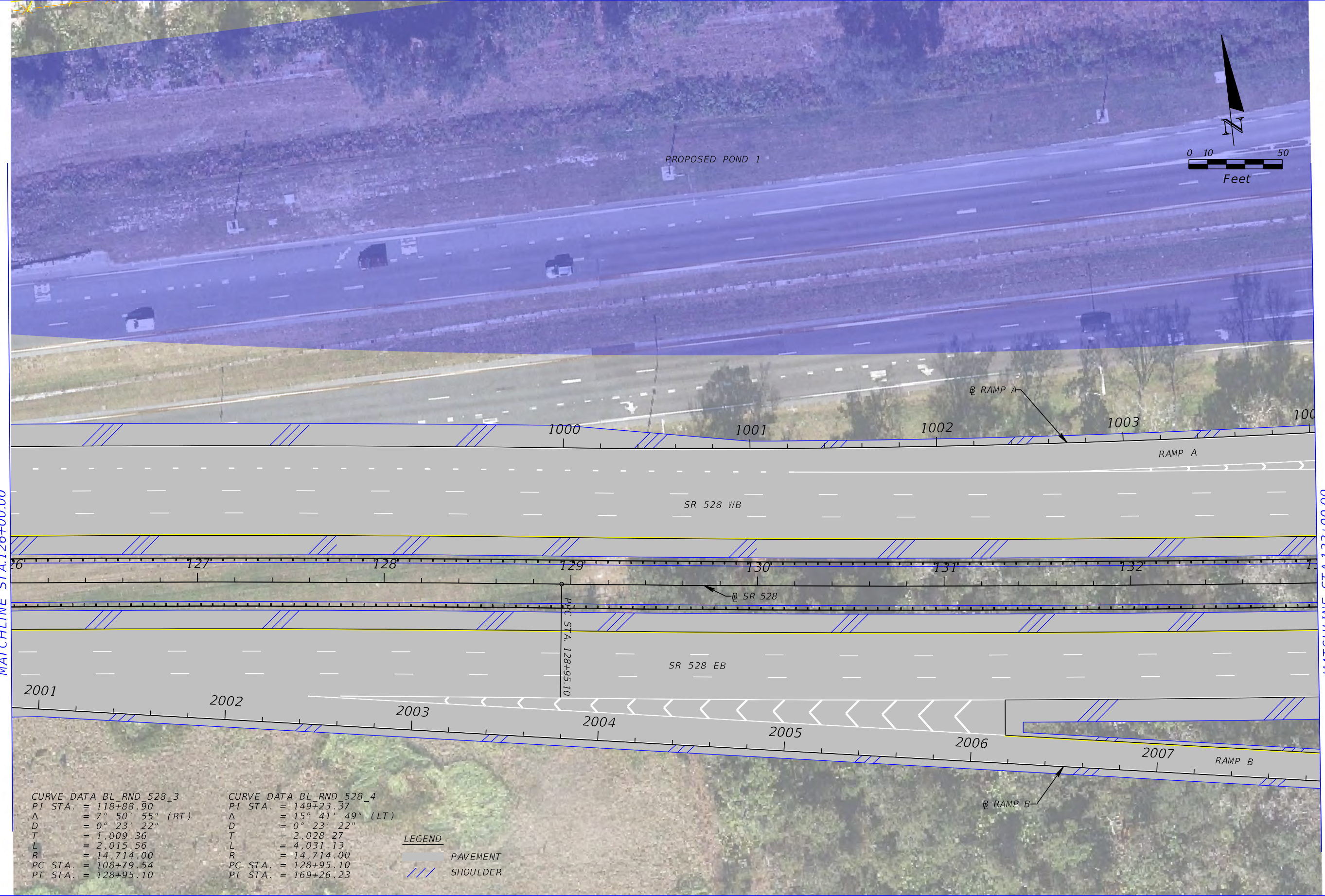
**ROADWAY PLANS**  
**MAINLINE**

SHEET  
NO.  
  
010

U:\CFX\_001844\Task04\_528-307\_Dallas Blvd\_IC\528-307\_Roadway\PLAN\RD01.dgn 4:40:39 PM 7/21/2023 JKirraez

MATCHLINE STA. 126+00.00

MATCHLINE STA. 133+00.00



CURVE DATA BL RND 528\_3  
 PI STA. = 118+88.90  
 Δ = 7° 50' 55" (RT)  
 D = 0° 23' 22"  
 T = 1,009.36  
 L = 2,015.56  
 R = 14,714.00  
 PC STA. = 108+79.54  
 PT STA. = 128+95.10

CURVE DATA BL RND 528\_4  
 PI STA. = 149+23.37  
 Δ = 15° 41' 49" (LT)  
 D = 0° 23' 22"  
 T = 2,028.27  
 L = 4,031.13  
 R = 14,714.00  
 PC STA. = 128+95.10  
 PT STA. = 169+26.23

**LEGEND**  
 PAVEMENT  
 SHOULDER

REVISIONS			
DATE	DESCRIPTION	DATE	DESCRIPTION

The Balmoral Group  
 165 Lincoln Avenue  
 Winter Park, FL 32789  
 Phone: (407) 629-2185  
 www.balmoralgroup.us

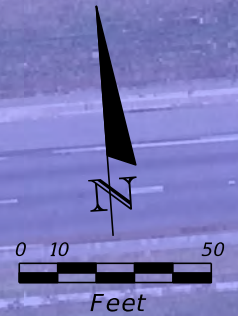
SR 528 DALLAS BLVD INTERCHANGE	
ROAD NO.	PROJECT NO.
SR 528	528-307



**ROADWAY PLANS**  
**MAINLINE**

SHEET NO.  
 011

U:\CFX\_001844\Task04\_528-307\_Dallas Blvd\_IC\528-307\_Roadway\PLAN\RD01.dgn 7/21/2023 4:40:40 PM JKirraees



MATCHLINE STA.133+00.00

MATCHLINE STA.140+00.00

CURVE DATA BL RND 528\_4  
 PI STA. = 149+23.37  
 $\Delta$  = 15° 41' 49" (LT)  
 D = 0° 23' 22"  
 T = 2,028.27  
 L = 4,031.13  
 R = 14,714.00  
 PC STA. = 128+95.10  
 PT STA. = 169+26.23

**LEGEND**  
 PAVEMENT  
 SHOULDER

REVISIONS	
DATE	DESCRIPTION

The Balmoral Group  
 165 Lincoln Avenue  
 Winter Park, FL 32789  
 Phone: (407) 629-2185  
 www.balmoralgroup.us

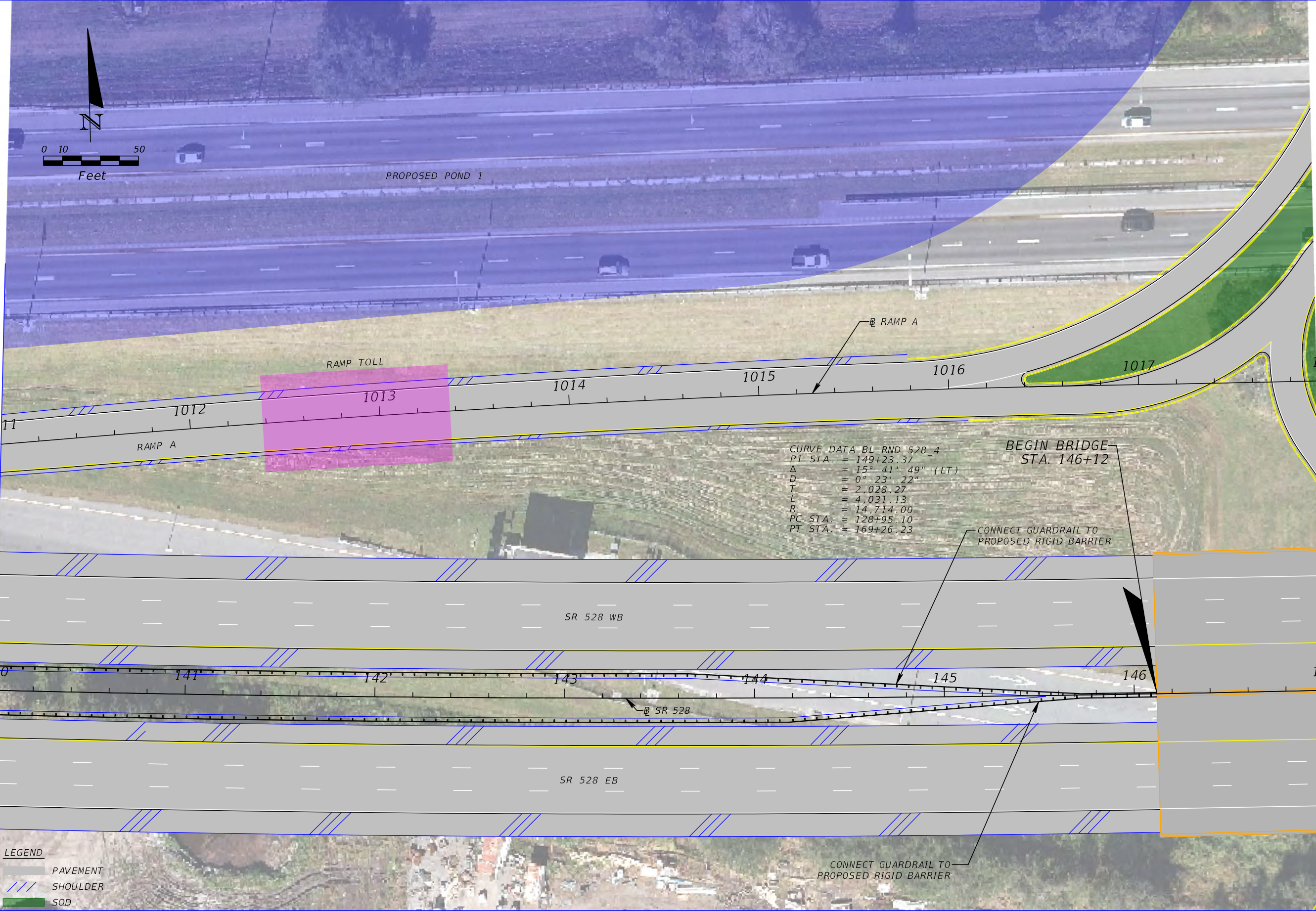
SR 528 DALLAS BLVD INTERCHANGE	
ROAD NO.	PROJECT NO.
SR 528	528-307



**ROADWAY PLANS**  
**MAINLINE**

SHEET NO.  
 012

U:\CFX\_001844\Task04\_528-307\_Dallas Blvd\_IC\528-307\_Roadway\PLAN\RD01.dgn 4:40:41 PM 7/21/2023 JKirraees



MATCHLINE STA.140+00.00

MATCHLINE STA.147+00.00

REVISIONS			
DATE	DESCRIPTION	DATE	DESCRIPTION

The Balmoral Group  
 165 Lincoln Avenue  
 Winter Park, FL 32789  
 Phone: (407) 629-2185  
 www.balmoralgroup.us

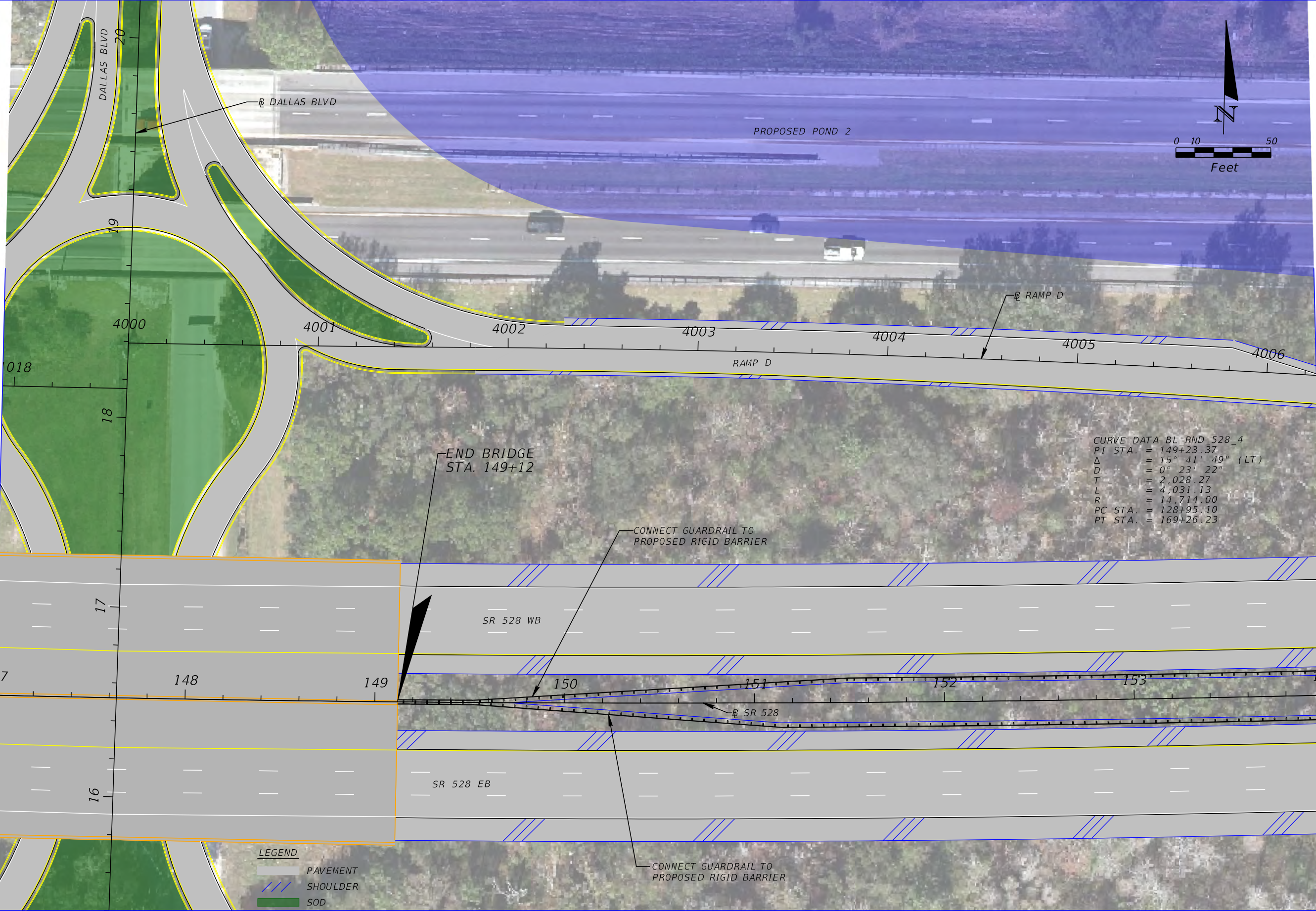
SR 528 DALLAS BLVD INTERCHANGE	
ROAD NO.	PROJECT NO.
SR 528	528-307



**ROADWAY PLANS**  
**MAINLINE**

SHEET NO.  
 013

7/21/2023 4:40:42 PM U:\CFX\_001844\Task04\_528-307\_Dallas Blvd\_IC\528-307\_Roadway\PLANR001.dgn JKirraees



MATCHLINE STA.147+00.00

MATCHLINE STA.154+00.00

**LEGEND**

	PAVEMENT
	SHOULDER
	SOD

**REVISIONS**

DATE	DESCRIPTION	DATE	DESCRIPTION

The Balmoral Group  
 165 Lincoln Avenue  
 Winter Park, FL 32789  
 Phone: (407) 629-2185  
 www.balmoralgroup.us

SR 528 DALLAS BLVD INTERCHANGE	
ROAD NO. SR 528	PROJECT NO. 528-307



**ROADWAY PLANS**  
**MAINLINE**

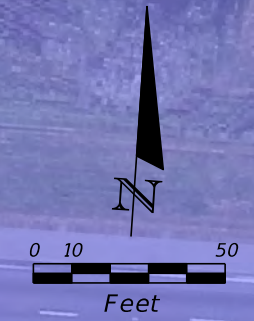
SHEET NO.  
 014

U:\CFX\_001844\Task04\_528-307\_Dallas Blvd\_IC\_528-307\_Roadway\PLAN\RD01.dgn

4:40:43 PM

7/21/2023

JKirraees



PROPOSED POND 2

CURVE DATA BL\_RND\_528\_4  
 PI STA. = 149+23.37  
 Δ = 15° 41' 49" (LT)  
 D = 0° 23' 22"  
 T = 2,028.27  
 L = 4,031.13  
 R = 14,714.00  
 PC STA. = 128+95.10  
 PT STA. = 169+26.23

MATCHLINE STA.154+00.00

MATCHLINE STA.161+00.00



**LEGEND**  
 PAVEMENT  
 SHOULDER

REVISIONS			
DATE	DESCRIPTION	DATE	DESCRIPTION

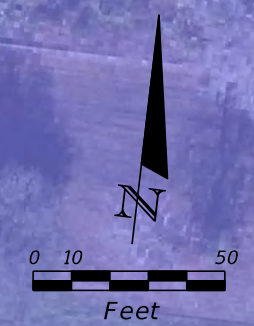
The Balmoral Group  
 165 Lincoln Avenue  
 Winter Park, FL 32789  
 Phone: (407) 629-2185  
 www.balmoralgroup.us

SR 528 DALLAS BLVD INTERCHANGE	
ROAD NO.	PROJECT NO.
SR 528	528-307



ROADWAY PLANS  
 MAINLINE

SHEET NO.  
 015



PROPOSED POND 2

MATCHLINE STA.161+00.00

MATCHLINE STA.168+00.00



CURVE DATA BL RND\_528\_4  
 PI STA. = 149+23.37  
 $\Delta$  = 15° 41' 49" (LT)  
 D = 0° 23' 22"  
 T = 2,028.27  
 L = 4,031.13  
 R = 14,714.00  
 PC STA. = 128+95.10  
 PT STA. = 169+26.23

**LEGEND**

- PAVEMENT
- SHOULDER

7/21/2023 4:40:44 PM U:\CFX\_001844\Task04\_528-307\_Dallas Blvd\_IC\528-307\_Roadway\PLANR001.dgn JKirraees

REVISIONS			
DATE	DESCRIPTION	DATE	DESCRIPTION

The Balmoral Group  
 165 Lincoln Avenue  
 Winter Park, FL 32789  
 Phone: (407) 629-2185  
 www.balmoralgroup.us

SR 528 DALLAS BLVD INTERCHANGE	
ROAD NO.	PROJECT NO.
SR 528	528-307

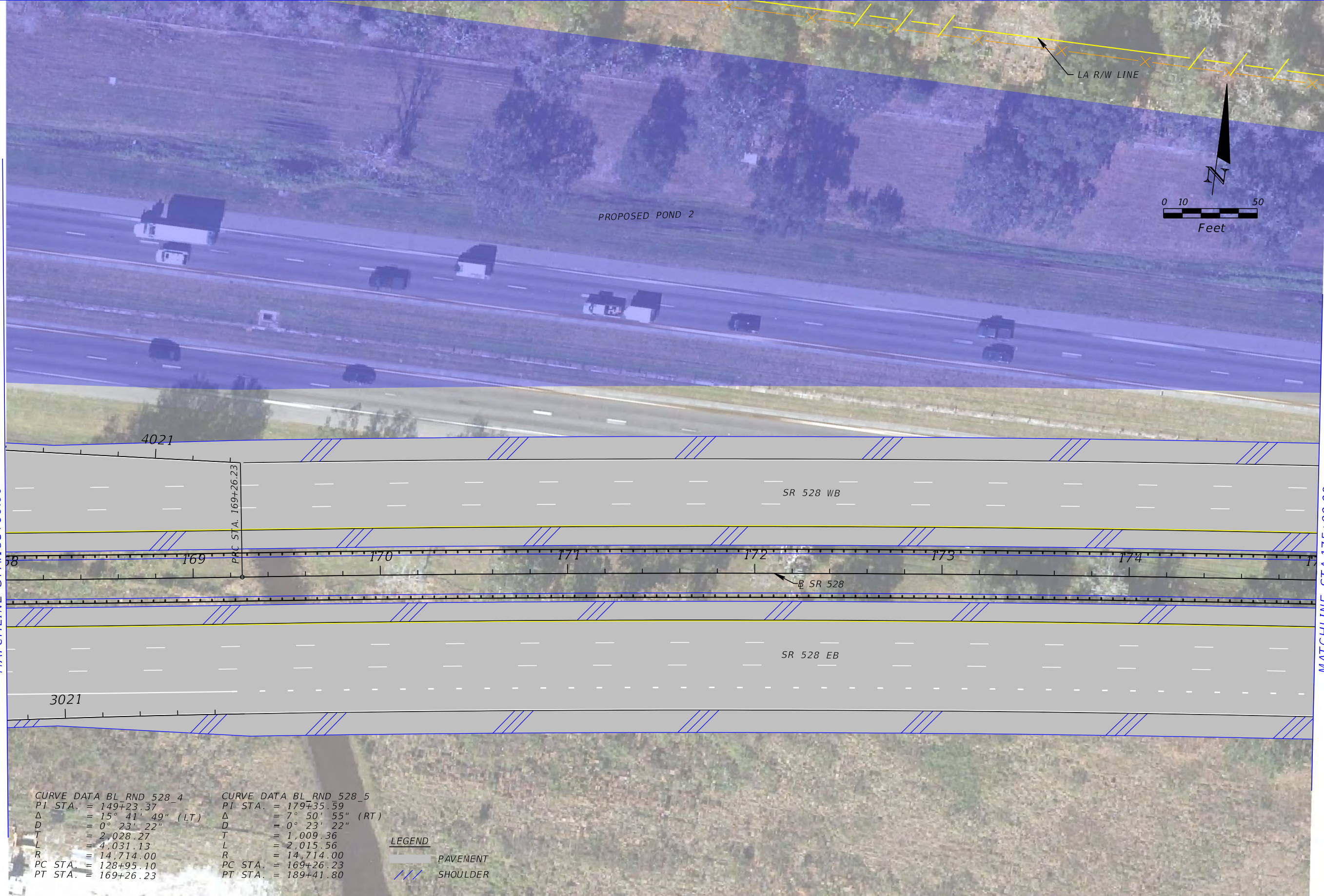


**ROADWAY PLANS**  
**MAINLINE**

SHEET NO.  
 016



U:\CFX\_001844\Task04\_528-307\_Dallas Blvd\_IC\528-307\_Roadway\PLAN\RD01.dgn 4:40:45 PM 7/21/2023 JKirraees



CURVE DATA BL_RND_528_4		CURVE DATA BL_RND_528_5	
PI STA.	= 149+23.37	PI STA.	= 179+35.59
Δ	= 15° 41' 49" (LT)	Δ	= 7° 50' 55" (RT)
D	= 0° 23' 22"	D	= 0° 23' 22"
T	= 2,028.27	T	= 1,009.36
L	= 4,031.13	L	= 2,015.56
R	= 14,714.00	R	= 14,714.00
PC STA.	= 128+95.10	PC STA.	= 169+26.23
PT STA.	= 169+26.23	PT STA.	= 189+41.80

**LEGEND**

	PAVEMENT
	SHOULDER

REVISIONS			
DATE	DESCRIPTION	DATE	DESCRIPTION

The Balmoral Group  
 165 Lincoln Avenue  
 Winter Park, FL 32789  
 Phone: (407) 629-2185  
 www.balmoralgroup.us

SR 528 DALLAS BLVD INTERCHANGE	
ROAD NO.	PROJECT NO.
SR 528	528-307



**ROADWAY PLANS**  
**MAINLINE**

SHEET NO.  
 017

U:\CFX\_001844\Task04\_528-307\_Dallas Blvd\_IC\528-307\_Roadway\PLAN\RD001.dgn

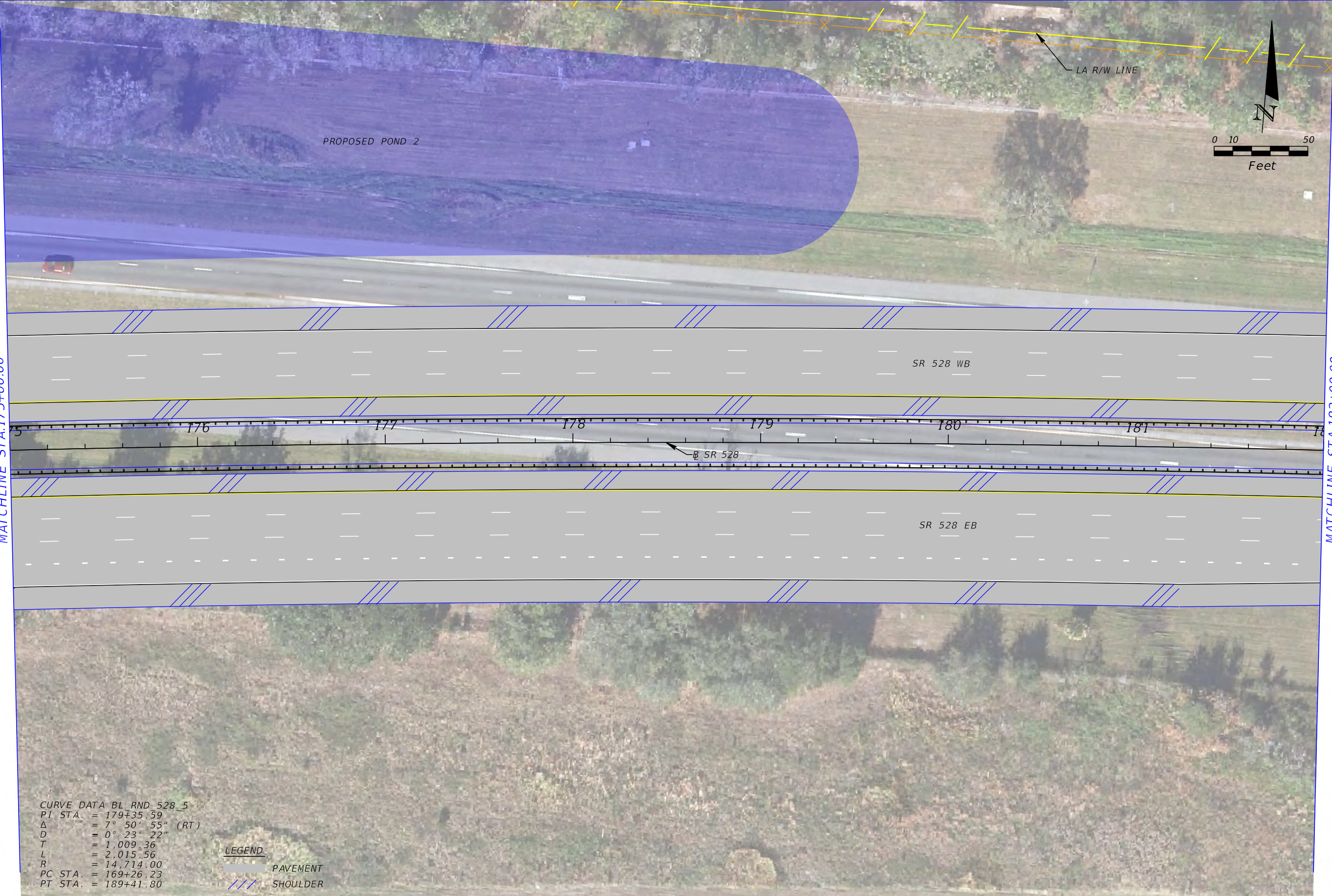
4:40:46 PM

7/21/2023

JKirraees

MATCHLINE STA.175+00.00

MATCHLINE STA.182+00.00



CURVE DATA BL\_RND\_528\_5  
 PI STA. = 179+35.59  
 Δ = 7° 50' 55" (RT)  
 D = 0° 23' 22"  
 T = 1,009.36  
 L = 2,015.56  
 R = 14,714.00  
 PC STA. = 169+26.23  
 PT STA. = 189+41.80

**LEGEND**  
 PAVEMENT  
 SHOULDER

REVISIONS	
DATE	DESCRIPTION

The Balmoral Group  
 165 Lincoln Avenue  
 Winter Park, FL 32789  
 Phone: (407) 629-2185  
 www.balmoralgroup.us

SR 528 DALLAS BLVD INTERCHANGE	
ROAD NO.	PROJECT NO.
SR 528	528-307



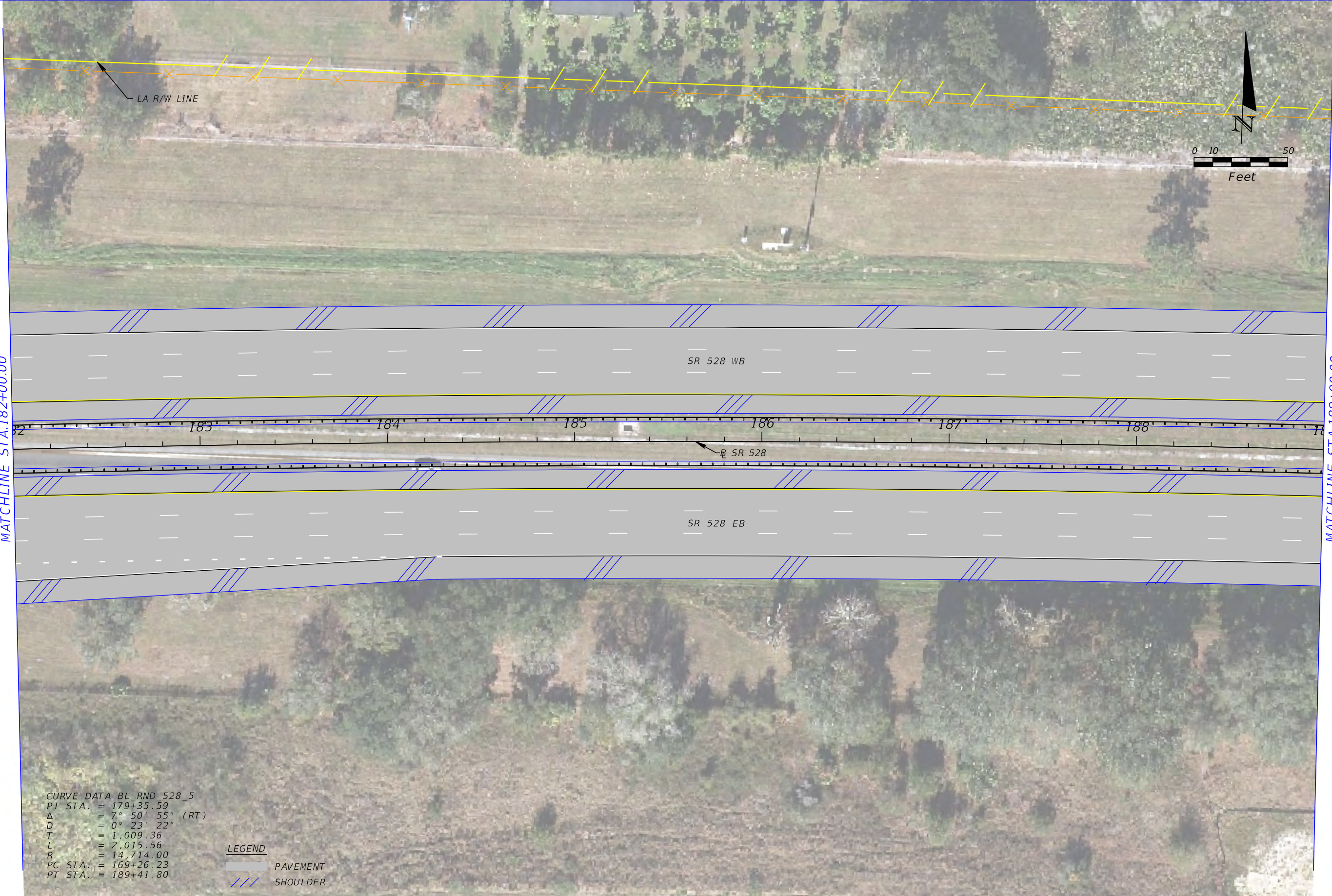
**ROADWAY PLANS**  
**MAINLINE**

SHEET NO.  
 018

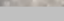

U:\CFX\_001844\Task04\_528-307\_Dallas Blvd\_IC\528-307\_Roadway\PLAN\RD01.dgn 4:40:47 PM 7/21/2023 JKirraees

MATCHLINE STA.182+00.00

MATCHLINE STA.189+00.00



CURVE DATA BL\_RND\_528\_5  
 PI STA. = 179+35.59  
 Δ = 7° 50' 55" (RT)  
 D = 0° 23' 22"  
 T = 1,009.36  
 L = 2,015.56  
 R = 14,714.00  
 PC STA. = 169+26.23  
 PT STA. = 189+41.80

**LEGEND**  
 PAVEMENT  
 SHOULDER

REVISIONS			
DATE	DESCRIPTION	DATE	DESCRIPTION

The Balmoral Group  
 165 Lincoln Avenue  
 Winter Park, FL 32789  
 Phone: (407) 629-2185  
 www.balmoralgroup.us

SR 528  
 DALLAS BLVD  
 INTERCHANGE

ROAD NO.	PROJECT NO.
SR 528	528-307

**CENTRAL  
 FLORIDA  
 EXPRESSWAY  
 AUTHORITY**

*ROADWAY PLANS  
 MAINLINE*

SHEET  
 NO.

019

U:\CFX\_001844\Task04\_528-307\_Dallas Blvd\_IC\528-307\_Roadway\PLAN\RD001.dgn

4:40:48 PM

7/21/2023

JKirraees



MATCHLINE STA.189+00.00

PT STA. 189+41.80

POT STA. 195+25.19

**LEGEND**

	PAVEMENT
	SHOULDER

REVISIONS			
DATE	DESCRIPTION	DATE	DESCRIPTION

The Balmoral Group  
 165 Lincoln Avenue  
 Winter Park, FL 32789  
 Phone: (407) 629-2185  
 www.balmoralgroup.us

SR 528 DALLAS BLVD INTERCHANGE	
ROAD NO.	PROJECT NO.
SR 528	528-307



**ROADWAY PLANS**  
**MAINLINE**

SHEET NO.  
 020

U:\CFX\_001844\Task04\_528-307\_Dallas Blvd\_IC\528-307\_Roadway\PLANR002.dgn 7/21/2023 4:40:49 PM JKirraees



**LEGEND**  
 PAVEMENT

REVISIONS			
DATE	DESCRIPTION	DATE	DESCRIPTION

The Balmoral Group  
 165 Lincoln Avenue  
 Winter Park, FL 32789  
 Phone: (407) 629-2185  
 www.balmoralgroup.us

SR 528 DALLAS BLVD INTERCHANGE	
ROAD NO. SR 528	PROJECT NO. 528-307



**ROADWAY PLANS**  
**DALLAS BLVD**

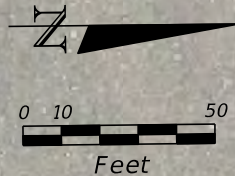
SHEET  
NO.  
**021**

MATCHLINE STA.12+74.00

U:\CFX\_001844\Task04\_528-307\_Dallas Blvd\_IC\_528-307\_Roadway\PLANRD02.dgn 4:40:50 PM 7/21/2023 JKirraees

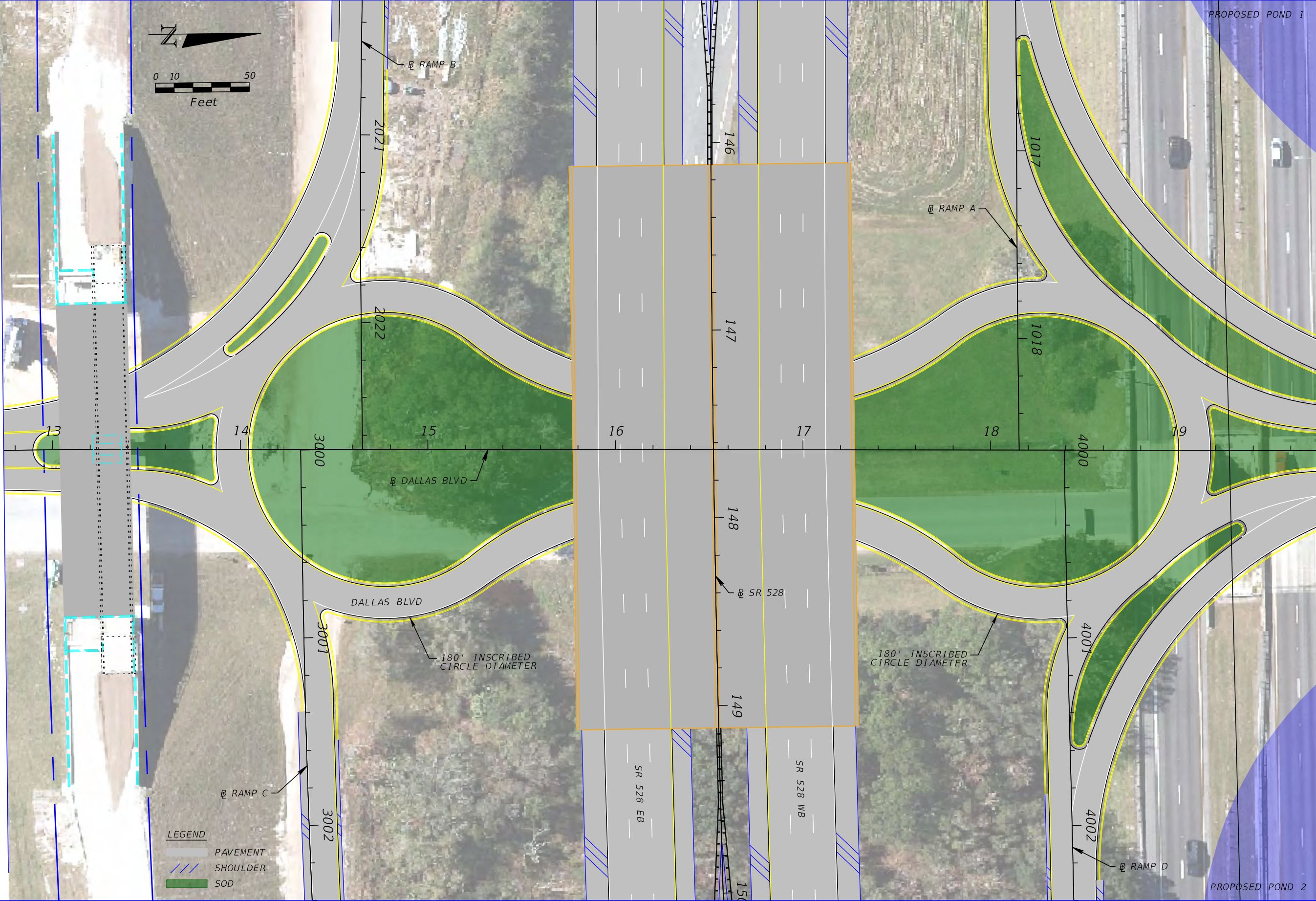
MATCHLINE STA.12+74.00

MATCHLINE STA.19+74.00



**LEGEND**

	PAVEMENT
	SHOULDER
	SOD



REVISIONS	
DATE	DESCRIPTION

The Balmoral Group  
 165 Lincoln Avenue  
 Winter Park, FL 32789  
 Phone: (407) 629-2185  
 www.balmoralgroup.us

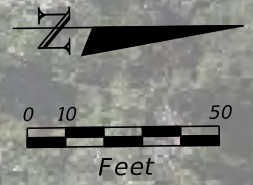
SR 528 DALLAS BLVD INTERCHANGE	
ROAD NO.	PROJECT NO.
SR 528	528-307



**ROADWAY PLANS**  
**DALLAS BLVD**

SHEET NO.  
 022

U:\CFX\_001844\Task04\_528-307\_Dallas Blvd\_IC\528-307\_Roadway\PLANR002.dgn 4:40:51 PM 7/21/2023 JKirraees



MATCHLINE STA.19+74.00



**LEGEND**

	PAVEMENT
	SOD

REVISIONS			
DATE	DESCRIPTION	DATE	DESCRIPTION

The Balmoral Group  
 165 Lincoln Avenue  
 Winter Park, FL 32789  
 Phone: (407) 629-2185  
 www.balmoralgroup.us

SR 528  
 DALLAS BLVD  
 INTERCHANGE

ROAD NO.	PROJECT NO.
SR 528	528-307



**ROADWAY PLANS**  
**DALLAS BLVD**

SHEET NO.

023

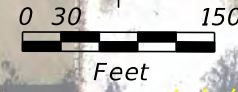
CURVE DATA BL RND WBON\_1  
 PI STA. = 1005+67.91  
 $\Delta$  = 10° 30' 58" (LT)  
 D = 0° 55' 42"  
 T = 567.91  
 L = 1,132.63  
 R = 6,171.00  
 PC STA. = 1000+00.00  
 PT STA. = 1011+32.63

CURVE DATA BL RND WBON\_2  
 PI STA. = 1014+14.49  
 $\Delta$  = 3° 52' 22" (RT)  
 D = 0° 41' 14"  
 T = 281.87  
 L = 563.52  
 R = 8,337.00  
 PC STA. = 1011+32.63  
 PT STA. = 1016+96.14

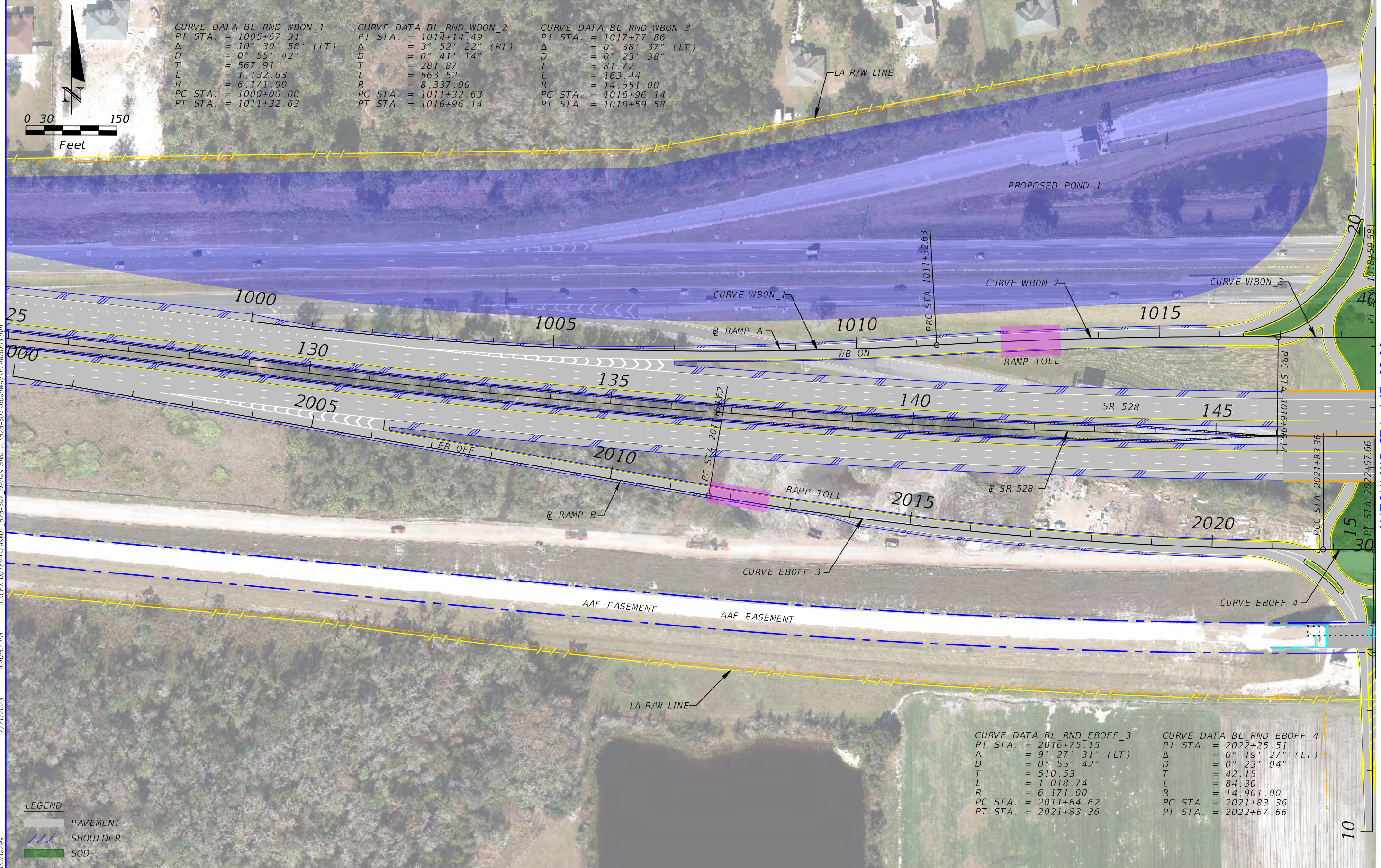
CURVE DATA BL RND WBON\_3  
 PI STA. = 1017+77.86  
 $\Delta$  = 0° 38' 37" (LT)  
 D = 0° 23' 38"  
 T = 81.72  
 L = 163.44  
 R = 14,551.00  
 PC STA. = 1016+96.14  
 PT STA. = 1018+59.58

CURVE DATA BL RND EBOFF\_3  
 PI STA. = 2016+75.15  
 $\Delta$  = 9° 27' 31" (LT)  
 D = 0° 55' 42"  
 T = 510.53  
 L = 1,018.74  
 R = 6,171.00  
 PC STA. = 2011+64.62  
 PT STA. = 2021+83.36

CURVE DATA BL RND EBOFF\_4  
 PI STA. = 2022+25.51  
 $\Delta$  = 0° 19' 27" (LT)  
 D = 0° 23' 04"  
 T = 42.15  
 L = 84.30  
 R = 14,901.00  
 PC STA. = 2021+83.36  
 PT STA. = 2022+67.66



U:\CFX\_001844\Task04\_528-307\_Dallas Blvd\_IC\_528-307\_Roadway\PLAN\RD03.dgn 4:40:52 PM 7/21/2023 JKirraez



**LEGEND**

	PAVEMENT
	SHOULDER
	SOD

REVISIONS			
DATE	DESCRIPTION	DATE	DESCRIPTION

The Balmoral Group  
 165 Lincoln Avenue  
 Winter Park, FL 32789  
 Phone: (407) 629-2185  
 www.balmoralgroup.us

SR 528 DALLAS BLVD INTERCHANGE	
ROAD NO.	PROJECT NO.
SR 528	528-307



**ROADWAY PLANS**  
**RAMPS**

SHEET NO.  
 024

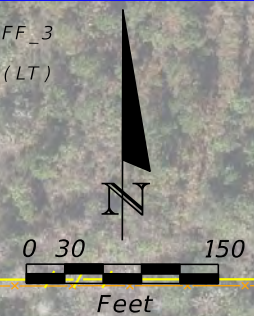
MATCHLINE STA. 147+63.00



CURVE DATA BL\_RND\_WBOFF\_1  
 PI STA. = 4000+91.44  
 Δ = 0° 43' 17" (LT)  
 D = 0° 23' 40"  
 T = 91.44  
 L = 182.88  
 R = 14,527.00  
 PC STA. = 4000+00.00  
 PT STA. = 4001+82.88

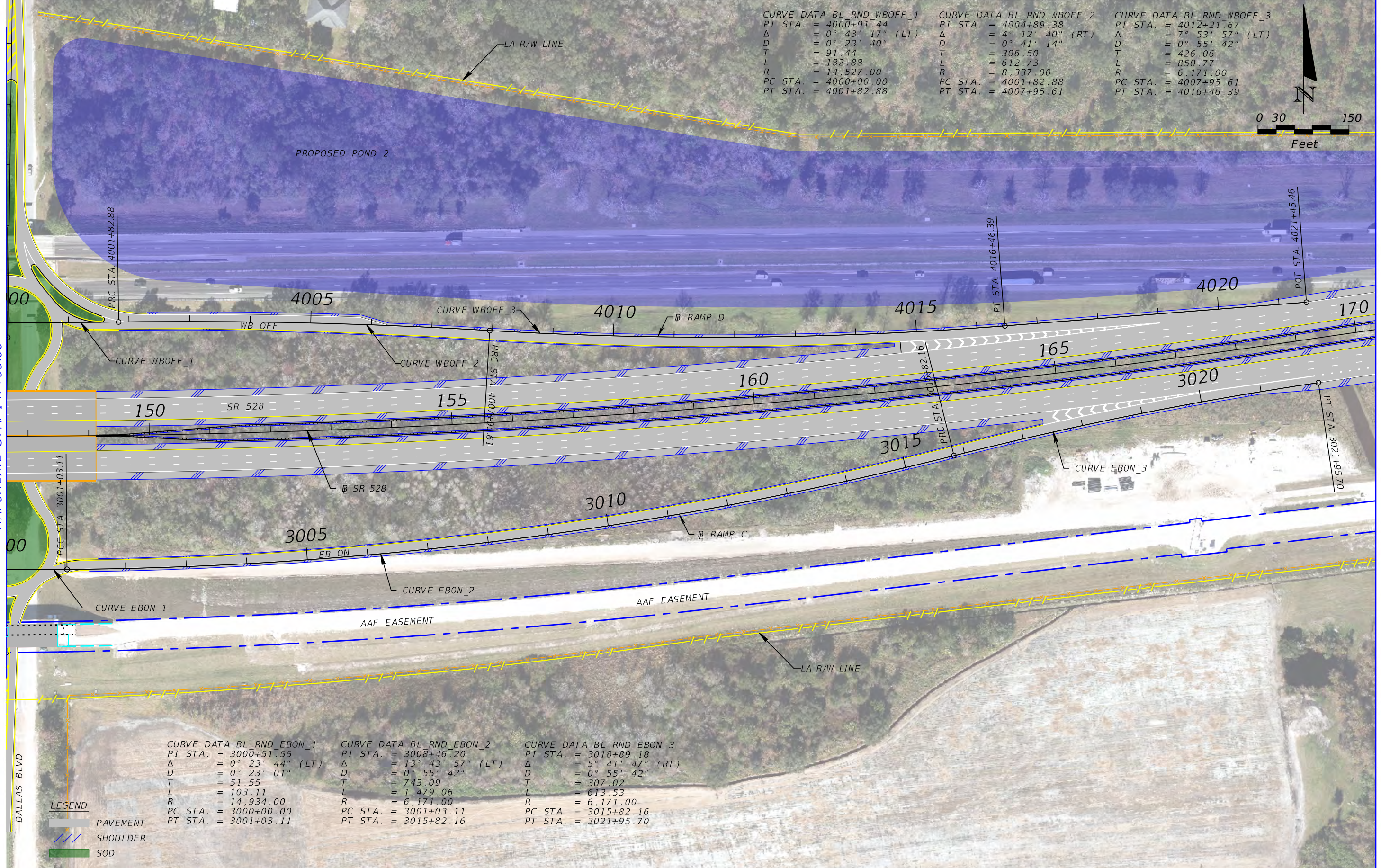
CURVE DATA BL\_RND\_WBOFF\_2  
 PI STA. = 4004+89.38  
 Δ = 4° 12' 40" (RT)  
 D = 0° 41' 14"  
 T = 306.50  
 L = 612.73  
 R = 8,337.00  
 PC STA. = 4001+82.88  
 PT STA. = 4007+95.61

CURVE DATA BL\_RND\_WBOFF\_3  
 PI STA. = 4012+21.67  
 Δ = 7° 53' 57" (LT)  
 D = 0° 55' 42"  
 T = 426.06  
 L = 850.77  
 R = 6,171.00  
 PC STA. = 4007+95.61  
 PT STA. = 4016+46.39



U:\CFX\_001844\Task04\_528-307\_Dallas Blvd\_IC\_528-307\_Roadway\PLAN\RD03.dgn  
 4:40:55 PM  
 7/21/2023  
 JKirraees

MATCHLINE STA. 147+63.00



CURVE DATA BL\_RND\_EBON\_1  
 PI STA. = 3000+51.55  
 Δ = 0° 23' 44" (LT)  
 D = 0° 23' 01"  
 T = 51.55  
 L = 103.11  
 R = 14,934.00  
 PC STA. = 3000+00.00  
 PT STA. = 3001+03.11

CURVE DATA BL\_RND\_EBON\_2  
 PI STA. = 3008+46.20  
 Δ = 13° 43' 57" (LT)  
 D = 0° 55' 42"  
 T = 743.09  
 L = 1,479.06  
 R = 6,171.00  
 PC STA. = 3001+03.11  
 PT STA. = 3015+82.16

CURVE DATA BL\_RND\_EBON\_3  
 PI STA. = 3018+89.18  
 Δ = 5° 41' 47" (RT)  
 D = 0° 55' 42"  
 T = 307.02  
 L = 613.53  
 R = 6,171.00  
 PC STA. = 3015+82.16  
 PT STA. = 3021+95.70

**LEGEND**  
 [Grey Box] PAVEMENT  
 [Blue Hatched Box] SHOULDER  
 [Green Box] SOD

REVISIONS			
DATE	DESCRIPTION	DATE	DESCRIPTION

The Balmoral Group  
 165 Lincoln Avenue  
 Winter Park, FL 32789  
 Phone: (407) 629-2185  
 www.balmoralgroup.us

SR 528 DALLAS BLVD INTERCHANGE	
ROAD NO.	PROJECT NO.
SR 528	528-307



**ROADWAY PLANS**  
**RAMPS**

SHEET NO.  
 025