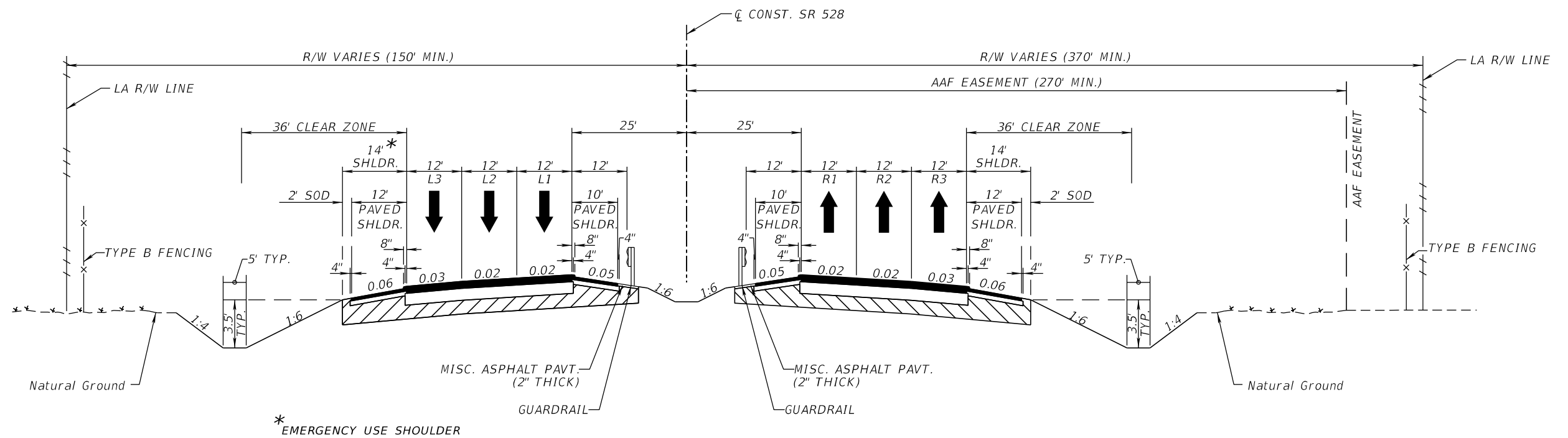


U:\CFX_001844\Task04_528-307_Roadway\TYP\SR001.dgn

3:17:42 PM

7/21/2023

JKiriazes



TYPICAL SECTION 1
SR 528 (BEACHLINE EXPRESSWAY)

STA. TBD TO STA. TBD
DESIGN SPEED = 70 MPH

ALTERNATIVE # 1 - ROUNDABOUT INTERCHANGE

REVISIONS			
DATE	DESCRIPTION	DATE	DESCRIPTION

The Balmoral Group
165 Lincoln Avenue
Winter Park, FL 32789
Phone: (407) 629-2185
www.balmoralgroup.us

SR 528 DALLAS BLVD INTERCHANGE	
ROAD NO. SR 528	PROJECT NO. 528-307

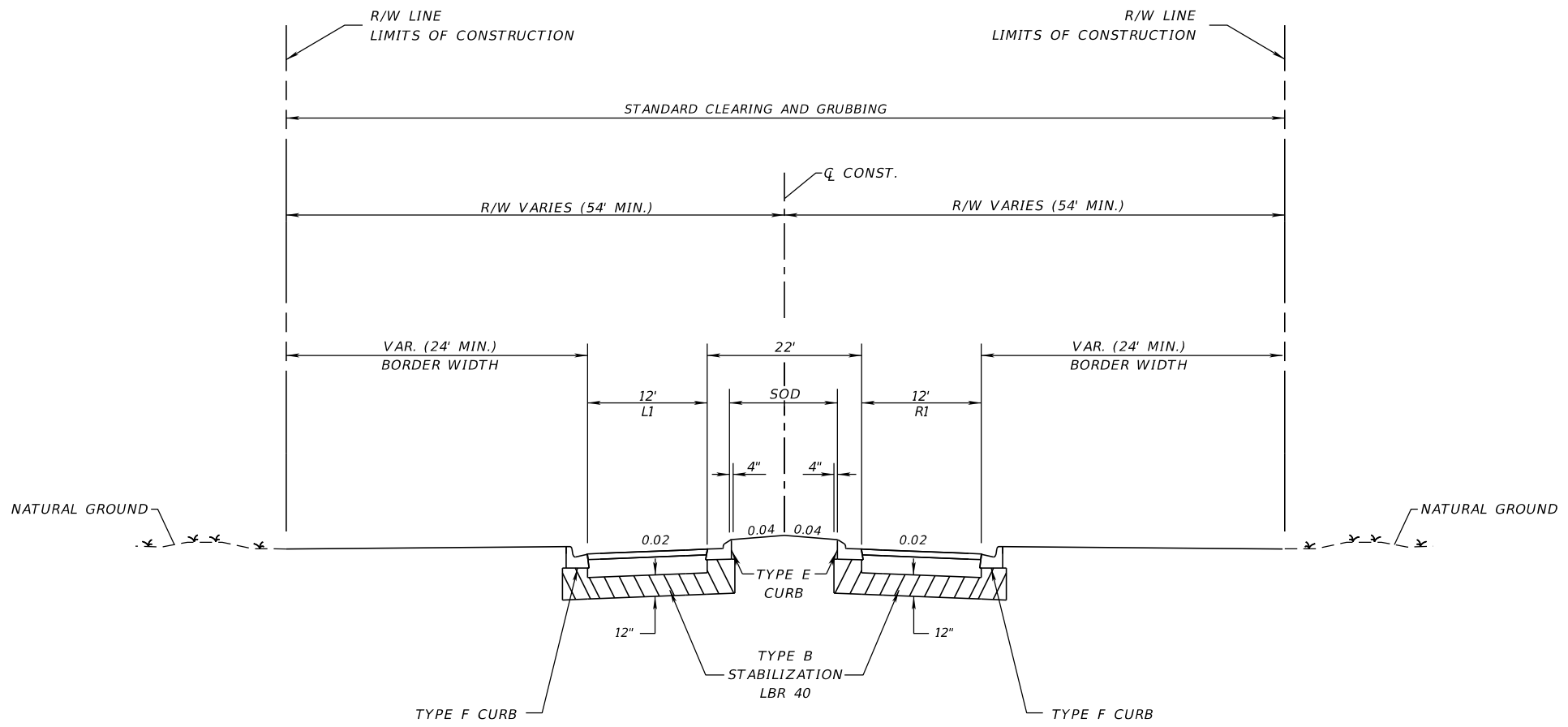
**CENTRAL
FLORIDA
EXPRESSWAY
AUTHORITY**

TYPICAL SECTION

SHEET NO.

001

U:\CFX_001844\Task\04_528-307_Dallas Blvd_IC\528-307_Roadway\TYP\SRD01.dgn 2:29:40 PM 7/20/2023 JKiriages



**TYPICAL SECTION 2
DALLAS BOULEVARD**
**TYPICAL SECTION IS BASED ON DESIGN ELEMENTS
FROM THE CONSTRUCTED AAF BRIDGE (SOUTH OF SR 528)**
 STA. TBD TO STA. TBD
 DESIGN SPEED = 45 MPH

*SIDEWALK REPLACES BIKE LANE AS PART OF BICYCLE BYPASS.
 BICYCLE SLIP LANE INTRODUCED UPSTREAM OF TURN LANE TAPER.

ALTERNATIVE # 1 - ROUNDABOUT INTERCHANGE

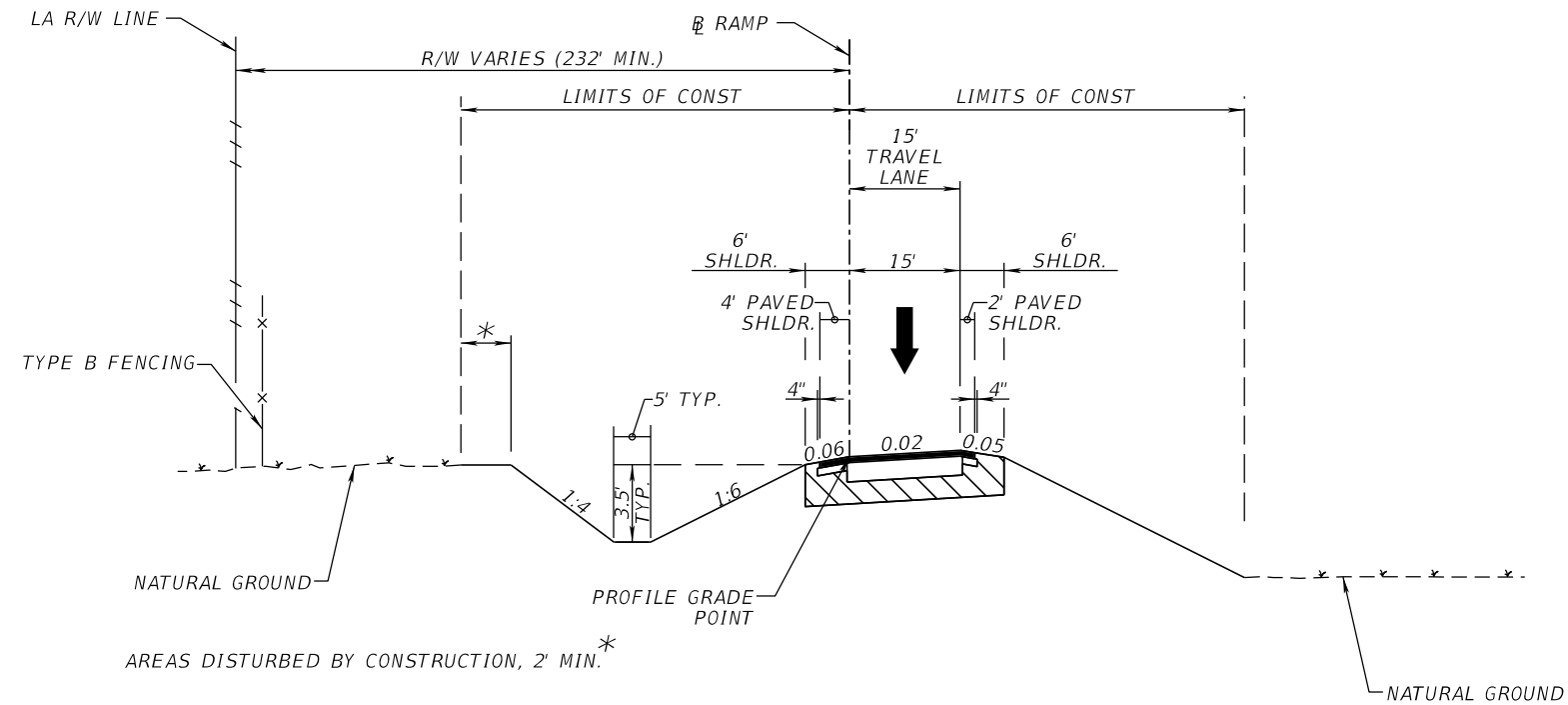
REVISIONS				The Balmoral Group 165 Lincoln Avenue Winter Park, FL 32789 Phone: (407) 629-2185 www.balmoralgroup.us	SR 528 DALLAS BLVD INTERCHANGE			TYPICAL SECTION	SHEET NO.
DATE	DESCRIPTION	DATE	DESCRIPTION		ROAD NO.	PROJECT NO.			
					SR 528	528-307			002

U:\CFX_001844\Task04_528-307_Dallas Blvd_IC\528-307_Roadway\TYP\SRD01.dgn

2:29:41 PM

7/20/2023

JKiriazes



**TYPICAL SECTION 3
RAMP A (WB ON-RAMP)
RAMP D (WB OFF-RAMP)**

STA. TBD TO STA. TBD
DESIGN SPEED = 50 MPH

ALTERNATIVE # 1 - ROUNDABOUT INTERCHANGE

REVISIONS			
DATE	DESCRIPTION	DATE	DESCRIPTION

The Balmoral Group
165 Lincoln Avenue
Winter Park, FL 32789
Phone: (407) 629-2185
www.balmoralgroup.us

SR 528
DALLAS BLVD
INTERCHANGE

ROAD NO.	PROJECT NO.
SR 528	528-307

**CENTRAL
FLORIDA
EXPRESSWAY
AUTHORITY**

TYPICAL SECTION

SHEET NO.

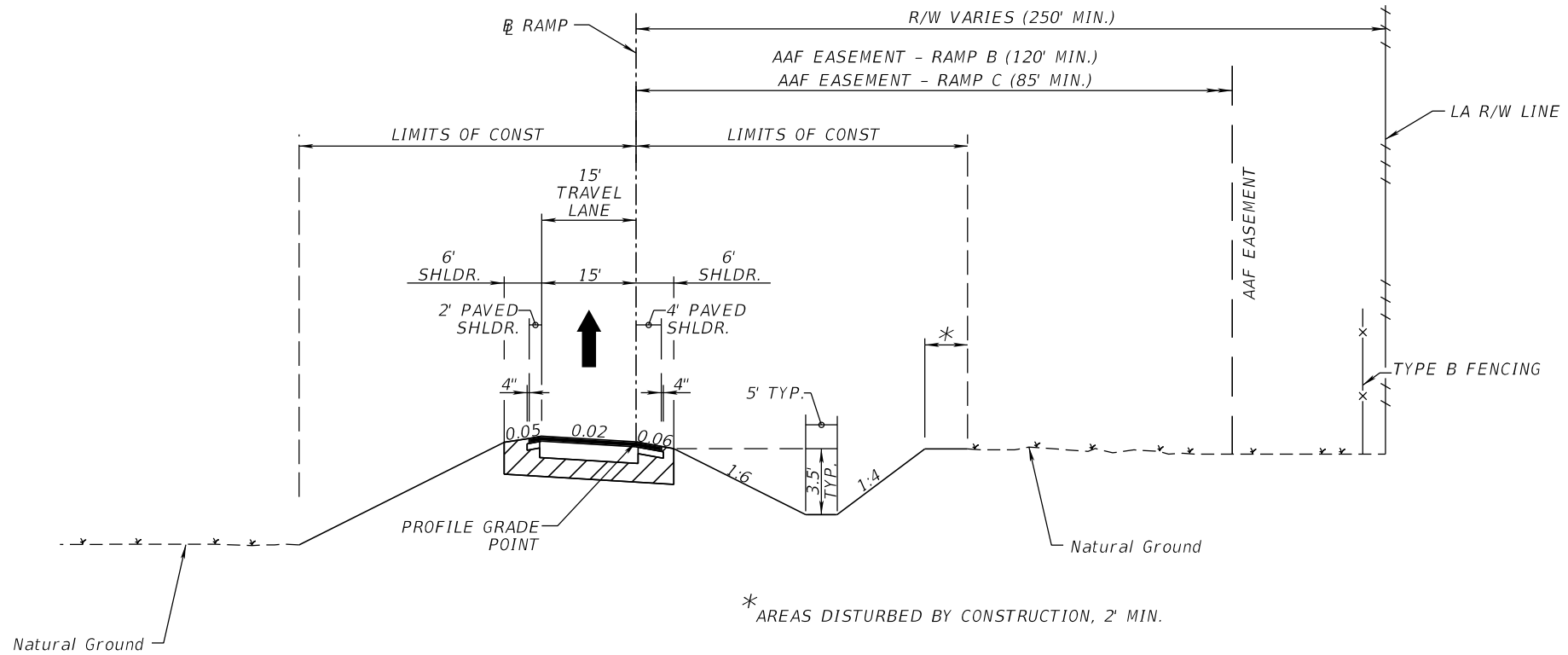
003

U:\CFX_001844\Task04_528-307_Dallas Blvd_IC\528-307_Roadway\TYP\SRD01.dgn

2:29:41 PM

7/20/2023

JKiriazes



**TYPICAL SECTION 4
RAMP B (EB OFF-RAMP)
RAMP C (EB ON-RAMP)**

STA. TBD TO STA. TBD
DESIGN SPEED = 50 MPH

ALTERNATIVE # 1 - ROUNDABOUT INTERCHANGE

REVISIONS			
DATE	DESCRIPTION	DATE	DESCRIPTION

The Balmoral Group
165 Lincoln Avenue
Winter Park, FL 32789
Phone: (407) 629-2185
www.balmoralgroup.us

SR 528
DALLAS BLVD
INTERCHANGE

ROAD NO.	PROJECT NO.
SR 528	528-307

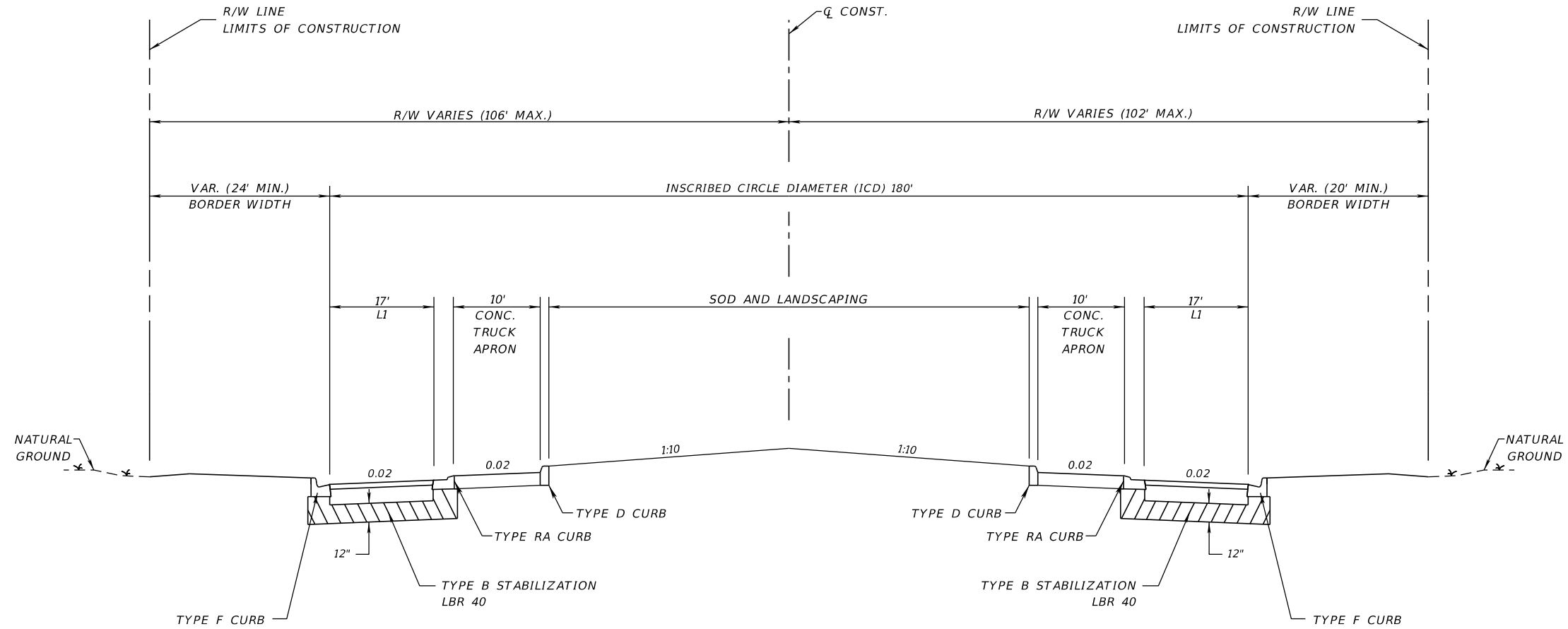
**CENTRAL
FLORIDA
EXPRESSWAY
AUTHORITY**

TYPICAL SECTION

SHEET NO.

004

U:\CFX\001844\Task04_528-307_Dallas Blvd_IC\528-307\Roadway\TYP5R001.dgn 2:29:41 PM 7/20/2023 JKiriazes



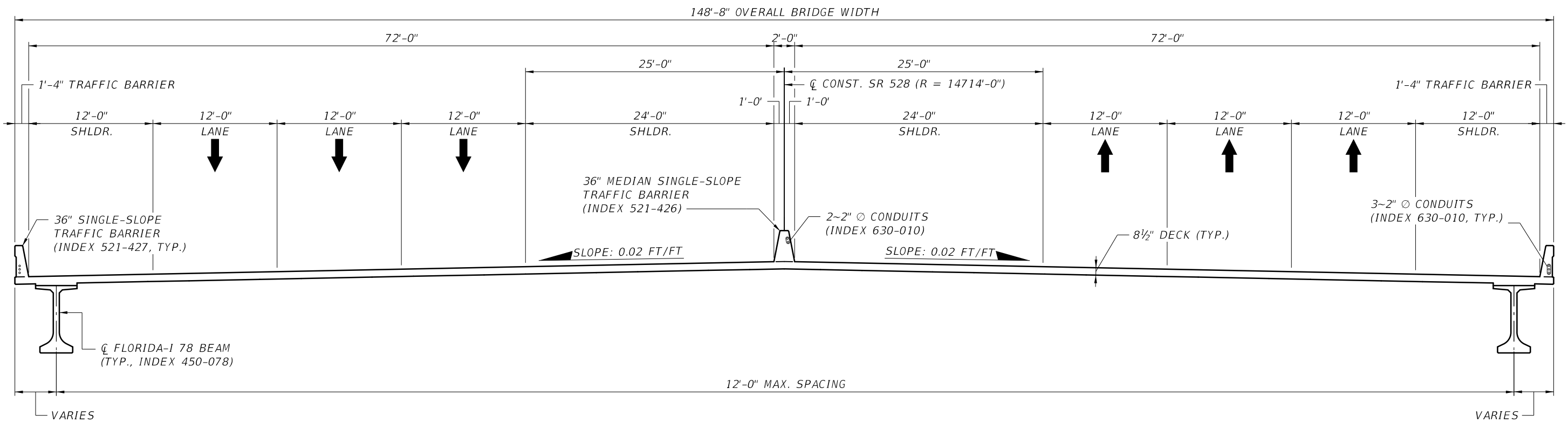
TYPICAL SECTION 5
DALLAS BOULEVARD
(CIRCULATORY AND CONNECTING ROADWAYS)
TYPICAL SECTION IS BASED ON DESIGN ELEMENTS
FROM THE CONSTRUCTED AAF BRIDGE (SOUTH OF SR 528)

*SIDEWALK REPLACES BIKE LANE
 AS PART OF BICYCLE BYPASS.
 BICYCLE SLIP LANE INTRODUCED
 UPSTREAM OF TURN LANE TAPER.

STA. TBD TO STA. TBD
 DESIGN SPEED = 45 MPH

ALTERNATIVE # 1 - ROUNDABOUT INTERCHANGE

REVISIONS				The Balmoral Group 165 Lincoln Avenue Winter Park, FL 32789 Phone: (407) 629-2185 www.balmoralgroup.us	SR 528 DALLAS BLVD INTERCHANGE			TYPICAL SECTION	SHEET NO.
DATE	DESCRIPTION	DATE	DESCRIPTION		ROAD NO.	PROJECT NO.			
					SR 528	528-307			



TYPICAL SECTION 6
(LOOKING UPSTATION)

NOTE:
1. ALL TRANSVERSE DIMENSIONS ARE MEASURED PERPENDICULAR TO \hat{C} CONST. SR 528.

ALTERNATIVE # 1 - ROUNDABOUT INTERCHANGE BRIDGE NO. XXXXXX

REVISIONS						DRAWN BY: AER	CENTRAL FLORIDA EXPRESSWAY AUTHORITY	SHEET TITLE: TYPICAL SECTION THROUGH BRIDGE DECK	REF. DWG. NO.
DATE	BY	DESCRIPTION	DATE	BY	DESCRIPTION				
						CHECKED BY: RK/KTZ DESIGNED BY: AER CHECKED BY: RK/KTZ	ROAD NO. SR 528 PROJECT NO. 528-307	PROJECT NAME: SR 528 OVER DALLAS BOULEVARD SR 528/DALLAS BOULEVARD INTERCHANGE	SHEET NO. 006

BASE CONSULTANTS, INC.
1214 EAST CONCORD STREET
ORLANDO, FL. 32803
PH: 407-377-7227
AARON EDWARD RANK, P.E. 77706



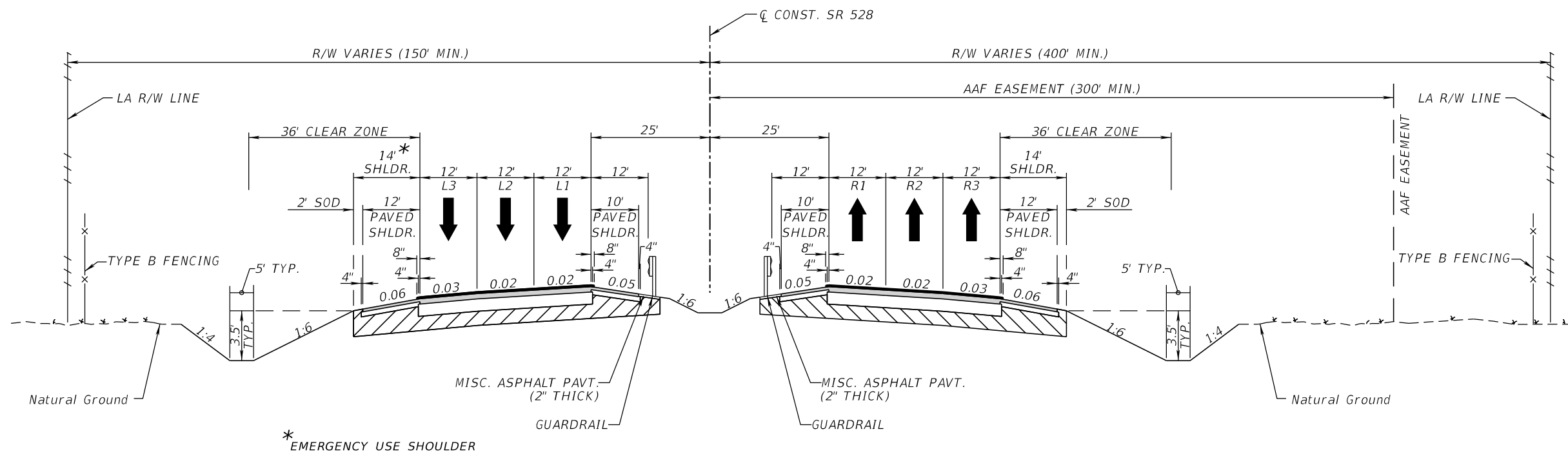
THE OFFICIAL RECORD OF THIS SHEET IS THE ELECTRONIC FILE DIGITALLY SIGNED AND SEALED UNDER RULE 61G15-23.004, F.A.C.

U:\CFX_001844\Task\04_528-307_Roadway\TYP\SRD01.dgn

2:29:42 PM

7/20/2023

JKiriazes

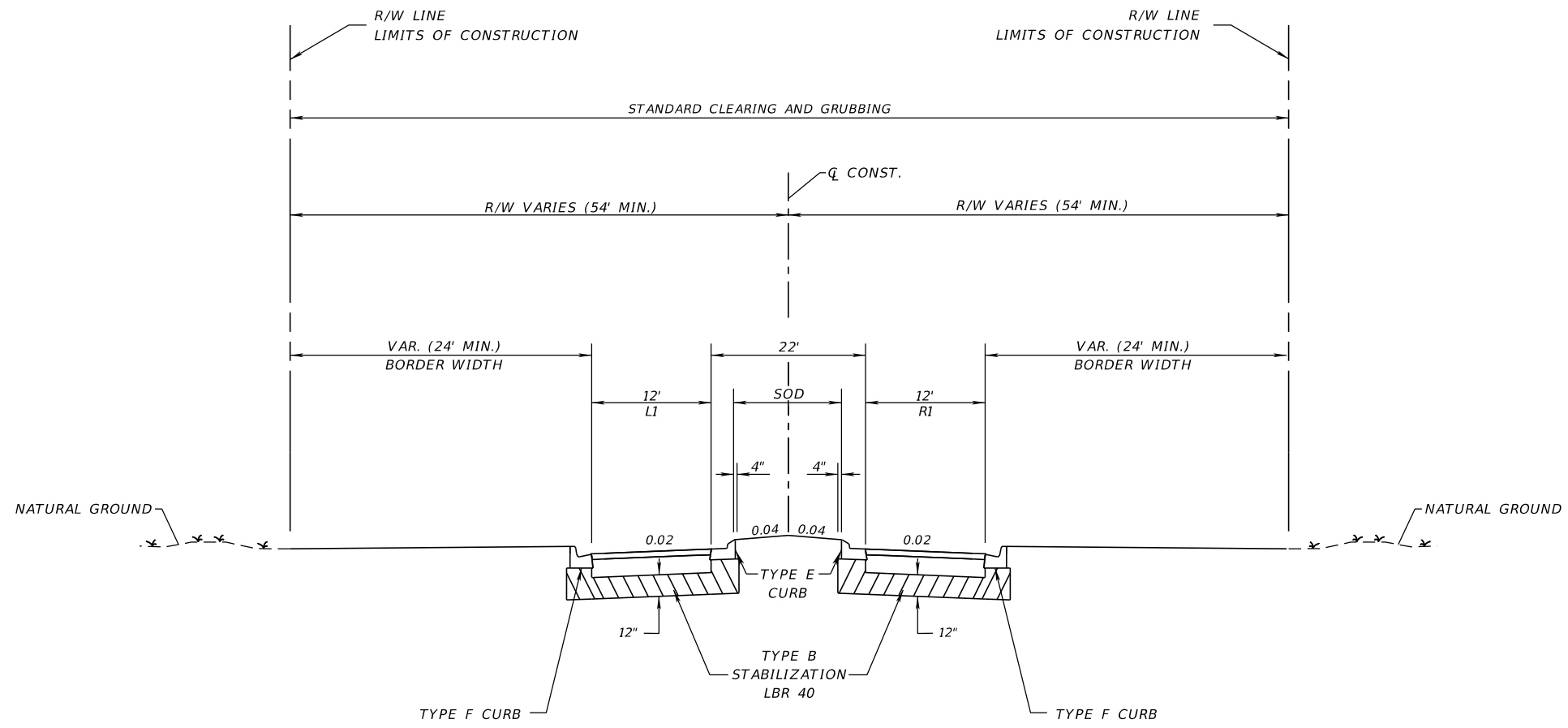


TYPICAL SECTION 1
SR 528 (BEACHLINE EXPRESSWAY)
 STA. TBD TO STA. TBD
 DESIGN SPEED = 70 MPH

ALTERNATIVE # 2 - SIGNALIZED BRAIDED INTERCHANGE

REVISIONS				The Balmoral Group 165 Lincoln Avenue Winter Park, FL 32789 Phone: (407) 629-2185 www.balmoralgroup.us	SR 528 DALLAS BLVD INTERCHANGE			TYPICAL SECTION	SHEET NO.
DATE	DESCRIPTION	DATE	DESCRIPTION		ROAD NO.	PROJECT NO.			
					SR 528	528-307			

U:\CFX_001844\Task\04_528-307_Dallas Blvd_IC\528-307_Roadway\TYP\SRD01.dgn 2:29:42 PM 7/20/2023 JKiriazes

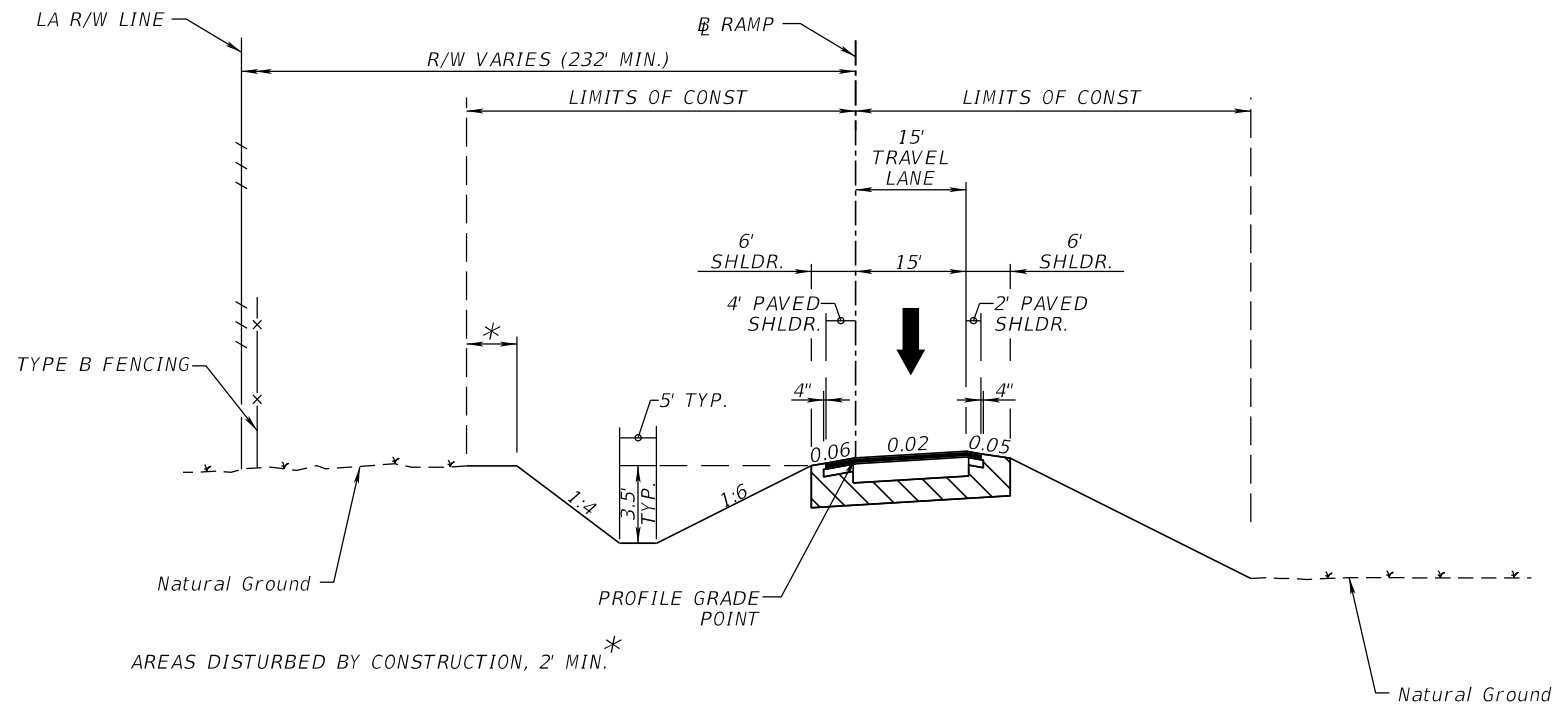


**TYPICAL SECTION 2
DALLAS BOULEVARD**
TYPICAL SECTION IS BASED ON DESIGN ELEMENTS
FROM THE CONSTRUCTED AAF BRIDGE (SOUTH OF SR 528)

STA. TBD TO STA. TBD
DESIGN SPEED = 45 MPH

ALTERNATIVE # 2 - SIGNALIZED BRAIDED INTERCHANGE

REVISIONS				The Balmoral Group 165 Lincoln Avenue Winter Park, FL 32789 Phone: (407) 629-2185 www.balmoralgroup.us	SR 528 DALLAS BLVD INTERCHANGE			TYPICAL SECTION	SHEET NO.
DATE	DESCRIPTION	DATE	DESCRIPTION		ROAD NO.	PROJECT NO.			
					SR 528	528-307			008



TYPICAL SECTION 3
RAMP A (WB ON-RAMP)
RAMP D (WB OFF-RAMP)

STA. TBD TO STA. TBD
 DESIGN SPEED = 30 MPH

ALTERNATIVE # 2 - SIGNALIZED BRAIDED INTERCHANGE

U:\CFX_001844\Task\04_528-307_Dallas Blvd_IC\528-307_Roadway\TYP\SRD01.dgn 2:29:41 PM 7/20/2023 JKiriazes

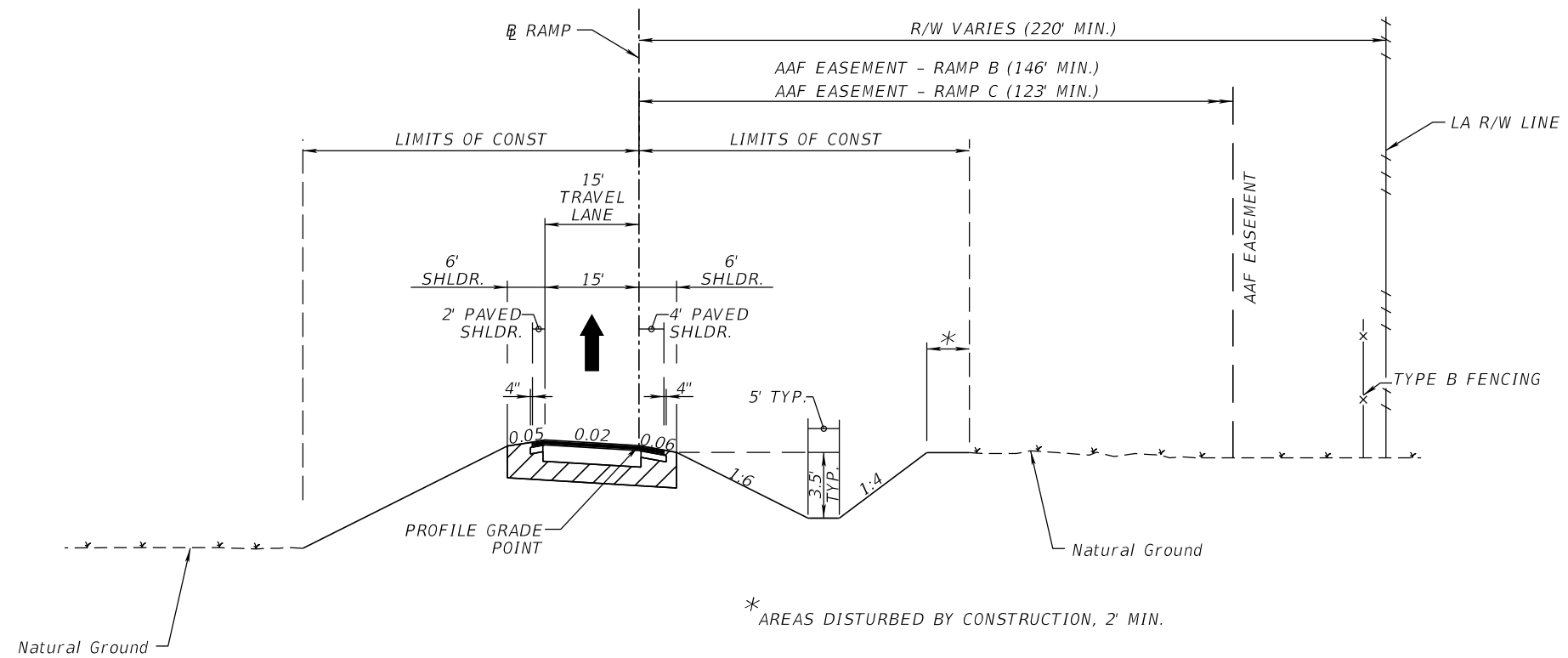
REVISIONS				The Balmoral Group 165 Lincoln Avenue Winter Park, FL 32789 Phone: (407) 629-2185 www.balmoralgroup.us	SR 528 DALLAS BLVD INTERCHANGE			TYPICAL SECTION	SHEET NO.
DATE	DESCRIPTION	DATE	DESCRIPTION		ROAD NO.	PROJECT NO.			
					SR 528	528-307			

U:\CFX_001844\Task04_528-307_Dallas Blvd_IC\528-307_Roadway\TYP\SRD01.dgn

2:29:41 PM

7/20/2023

JKiriazes



**TYPICAL SECTION 4
RAMP B (EB OFF-RAMP)
RAMP C (EB ON-RAMP)**

STA. TBD TO STA. TBD
DESIGN SPEED = 50 MPH

ALTERNATIVE # 2 - SIGNALIZED BRAIDED INTERCHANGE

REVISIONS			
DATE	DESCRIPTION	DATE	DESCRIPTION

The Balmoral Group
165 Lincoln Avenue
Winter Park, FL 32789
Phone: (407) 629-2185
www.balmoralgroup.us

SR 528
DALLAS BLVD
INTERCHANGE

ROAD NO.	PROJECT NO.
SR 528	528-307

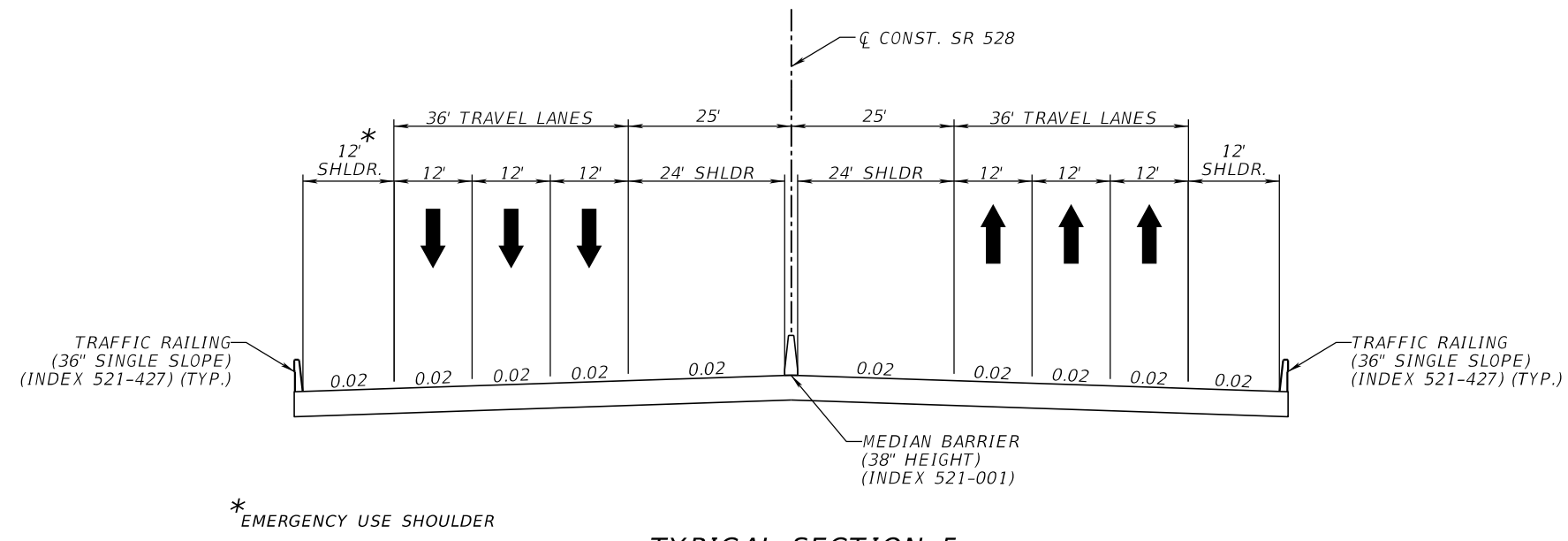
**CENTRAL
FLORIDA
EXPRESSWAY
AUTHORITY**

TYPICAL SECTION

SHEET NO.

010

U:\CFX_001844\Task04_528-307_Dallas Blvd_IC\528-307_Roadway\TYP\SR001.dgn 2:29:42 PM 7/20/2023 JKiriazes

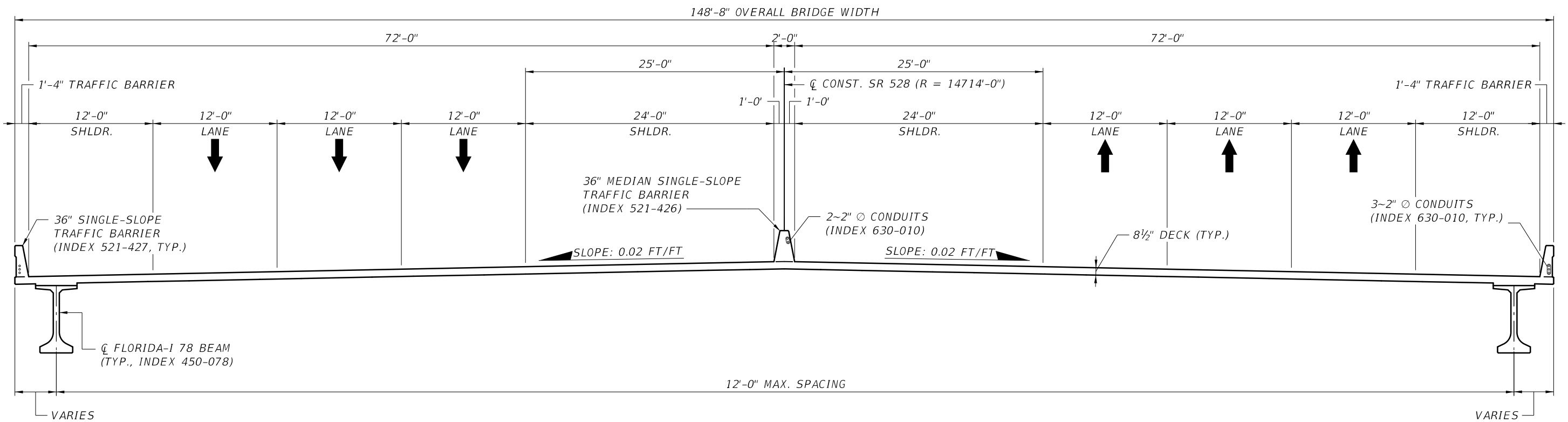


TYPICAL SECTION 5
SR 528 OVER RAMPS (RAMP A & RAMP D)

STA. TBD TO STA. TBD
 DESIGN SPEED = 70

ALTERNATIVE # 2 - SIGNALIZED BRAIDED INTERCHANGE

REVISIONS				The Balmoral Group 165 Lincoln Avenue Winter Park, FL 32789 Phone: (407) 629-2185 www.balmoralgroup.us	SR 528 DALLAS BLVD INTERCHANGE		CENTRAL FLORIDA EXPRESSWAY AUTHORITY	<i>TYPICAL SECTION</i>	SHEET NO.
DATE	DESCRIPTION	DATE	DESCRIPTION		ROAD NO.	PROJECT NO.			
					SR 528	528-307			



TYPICAL SECTION
(LOOKING UPSTATION)

NOTE:
1. ALL TRANSVERSE DIMENSIONS ARE MEASURED PERPENDICULAR TO C.C. SR 528.

ALTERNATIVE # 2 - SIGNALIZED BRAIDED INTERCHANGE BRIDGE NO. XXXXXX

REVISIONS						DRAWN BY: AER	CENTRAL FLORIDA EXPRESSWAY AUTHORITY	SHEET TITLE: TYPICAL SECTION THROUGH BRIDGE DECK	REF. DWS. NO.
DATE	BY	DESCRIPTION	DATE	BY	DESCRIPTION				
						CHECKED BY: RK/KTZ	ROAD NO. SR 528	PROJECT NO. 528-307	PROJECT NAME: SR 528 OVER DALLAS BOULEVARD SR 528/DALLAS BOULEVARD INTERCHANGE
						DESIGNED BY: AER			SHEET NO. 012
						CHECKED BY: RK/KTZ			

THE OFFICIAL RECORD OF THIS SHEET IS THE ELECTRONIC FILE DIGITALLY SIGNED AND SEALED UNDER RULE 61G15-23.004, F.A.C.