



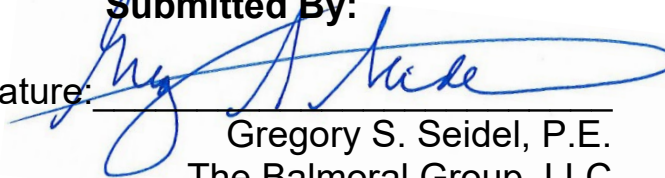
UTILITY ASSESSMENT TECHNICAL MEMORANDUM

SR 528 & DALLAS BLVD INTERCHANGE Martin Andersen Beachline Expressway

PROJECT DEVELOPMENT & ENVIRONMENT STUDY

Submitted By:

Signature:



Gregory S. Seidel, P.E.
The Balmoral Group, LLC
July 17, 2023



Table of Contents

Project Information	1
Project Location Map	2
Project Background and Description	3
Background	3
Study Description	3
Purpose & Need	3
General Conditions of Project Area	5
Utility Assessment Technical Memorandum	6
Purpose of Utility Assessment	6
Existing Utility Agency Owner (UAO) Assessment	6
Utility Assessment	9
Utility Impacts	9
Utility Relocation Cost Estimates	10

Appendix

Appendix A - 811 Sunshine Ticket

Project Information

Project Name:	State Road (SR) 528 & Dallas Blvd Interchange
Projects Limits:	The project area covers SR 528 and the existing CFX right-of-way from the Econlockhatchee River bridge to approximately ¾ mile east of Dallas Boulevard. The project limits also contain the intersection and small areas of Dallas Boulevard and Starry Street in the Wedgefield neighborhood, located within Orange County.
County:	Orange
Proposed Activity:	This PD&E Study will analyze and evaluate the completion of the Dallas Boulevard interchange by adding a westbound off-ramp and eastbound on-ramp to SR 528 to provide enhanced access and mobility to the Wedgefield community and eastern Orange County.
Responsible Agency:	Central Florida Expressway Authority (CFX)
Planning Organization:	CFX
Phase:	Project Development & Environment (PD&E) Study

Project Contact Information:

CFX Director of Engineering

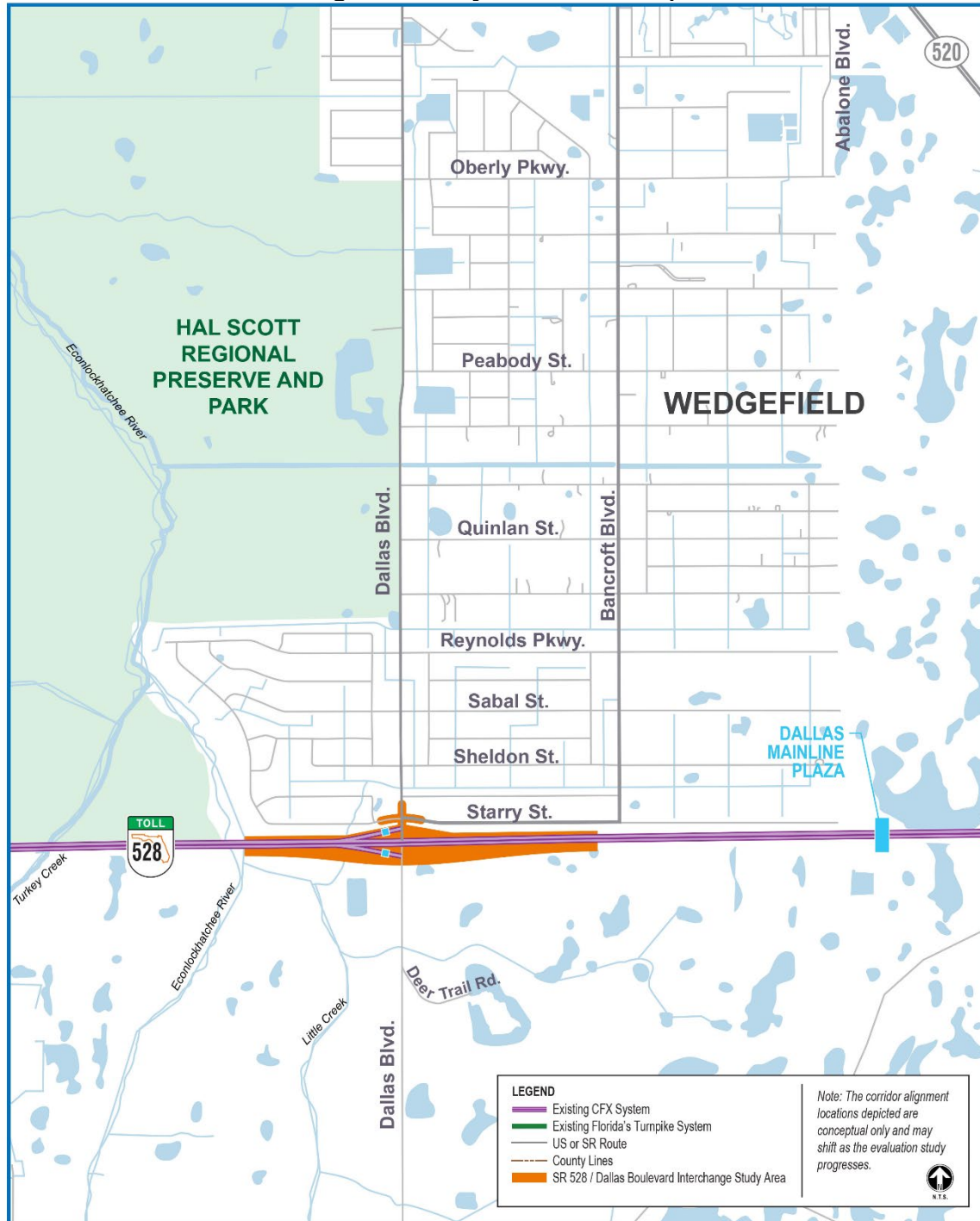
Dana Chester, PE
Central Florida Expressway Authority
4974 ORL Tower Road
Orlando, FL 32807
Office: 407-690-5000
Email: Dana.Chester@cfxway.com

CFX Project Manager

David Falk, PE
Central Florida Expressway Authority
4974 ORL Tower Road
Orlando, FL 32807
Office: 407-690-5000
Email: David.Falk@cfxway.com

Project Location Map

Figure 1 - Project Location Map



CENTRAL
 FLORIDA
 EXPRESSWAY
 AUTHORITY

SR 528 / Dallas Boulevard Interchange Study Area
 Central Florida Expressway Authority
 General Location Map

Project Background & Description

Background

In December 2022, CFX began a Project Development and Environment (PD&E) Study of the State Road (SR) 528 & Dallas Blvd Interchange. The study is evaluating the completion of the Dallas Boulevard interchange by adding a westbound off-ramp and eastbound on-ramp to SR 528 to provide enhanced access and mobility to the Wedgefield community and eastern Orange County.

Study Description

Currently, the Dallas Boulevard interchange (Exit 24) on State Road (SR) 528 (Martin B. Andersen Beachline Expressway) is a half interchange – consisting of a westbound on-ramp and an eastbound off-ramp. The completion to a full interchange, by adding a westbound off-ramp and eastbound on-ramp, has been identified as a need to provide enhanced access and mobility to the Wedgefield community and eastern Orange County. Currently, residents within Wedgefield must travel north in the subdivision to access SR 520 and then travel south to access SR 528 in the eastbound direction – a distance that can range from approximately seven to thirteen miles – and vice versa when travelling westbound on SR 528. Therefore, this PD&E Study will analyze and evaluate the completion of the Dallas Boulevard interchange (Exit 24) by adding a westbound off-ramp and eastbound on-ramp.

Purpose and Need

Purpose

The projected regional growth and corresponding traffic forecasts generated for the entire CFX Expressway System, as summarized in their 2040 Master Plan, has indicated that the Dallas Boulevard interchange is located within the projected high growth areas of Orange County. The actual development and associated travel demand that has occurred at the Dallas Boulevard interchange has greatly outpaced the original projections. It is anticipated that future traffic demand at this interchange will further exceed the design capacities as development continues to intensify. The purpose of this study is to provide enhanced access and mobility for the existing community bordering Dallas Blvd, and future developments. Additional purposes for the project include improved emergency vehicle access and response, and supporting economic development. Therefore, this PD&E Study will analyze and evaluate a proposed full interchange expressway connection from Dallas Blvd to SR 528.

Need

There are five (5) project needs that serve as justification for the proposed improvements. These needs are to:

- 1) Provide System Linkage.** A full interchange has been identified as a need to provide enhanced access and mobility to the Wedgefield area of Orange County from SR 528. Currently, vehicles in the vicinity of SR 528 who need to travel east on SR 528 must detour up to 13 miles to SR 520 southbound. Vehicles traveling westbound on SR 528 wishing to access Dallas Blvd or the Wedgefield area are required to utilize northbound SR 520, then enter Wedgefield and perform a detour of up to 13 miles.
- 2) Provide Regional Connectivity and Mobility** - This connection will improve mobility and future connectivity within the region, specifically to allow connection to and from the Space

Coast and Cocoa Beach area to the east.

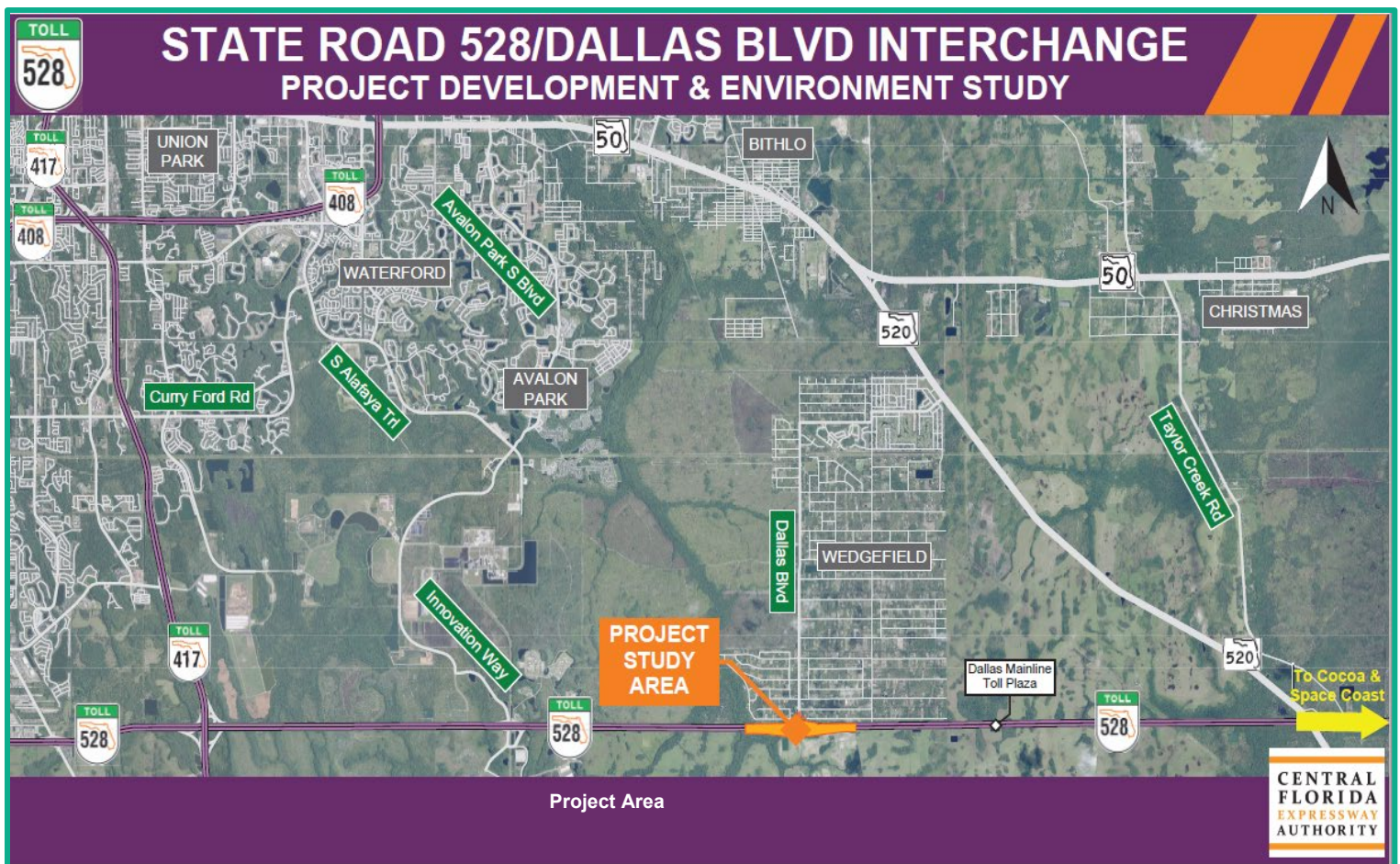
- 3) **Support Social and Economic Needs** - The proposed improvements will provide enhanced regional connectivity in the eastern Orlando Metro area within unincorporated Orange County, with anticipated development to the south of the project area. The project will assist in providing improved access to jobs, services, and recreation. The enhanced mobility will continue to drive economic development.
- 4) **Provide Consistency with Local and Regional Plans** - The Interchange is consistent with planned CFX capacity improvement projects and future development, along with consistency with regional transportation plans for the area.
- 5) **Design a Safe and Operational Interchange** – The interchange will provide safety improvements over existing conditions.

General Existing Conditions of Project Area

The project area, as defined within the PD&E Study, is the location where alternative concepts are being considered for the completion of a full interchange to SR 528 and roadway improvements to Dallas Blvd that will provide full access. For consistency in studying the existing and anticipated conditions of the area surrounding the PD&E Study Area, a half mile radius of the general existing conditions surrounding the project area are used, unless specifically called out. The entirety of the project area falls within unincorporated Orange County.

The project area covers SR 528 and the existing CFX right-of-way from the Econlockhatchee River Bridge to approximately ¾ mile east of Dallas Blvd. The project limits also contain the intersection and small areas of Dallas Blvd and Starry Street in the Wedgefield neighborhood, located within Orange County.

Figure 2 - Project Area Regional Context



Utility Assessment Technical Memorandum

Purpose of Utility Assessment

This Utility Assessment Package has been assembled to provide information on existing and planned utilities within the study limits. This package contains information on the names of utility companies, aeriels denoting the location of major existing and proposed facilities, descriptions of the identified utilities, project coordination efforts, potential impacts, and, where known, information on the cost of relocation.

Existing Utility Agency Owner (UAO) Assessment

The UAOs in the study area were determined using a variety of sources. First, a Sunshine 811 Design Ticket was made to identify the utility providers and operators registered in the area. Next, a site visit was performed to visually identify marked utilities and the providers. These utility providers were then contacted to establish the proper personnel to assist with locating and identifying existing and planned utilities in the area. Lastly, plans, permits and/or mapping of the utilities were requested for review including any right-of-way or easement agreements along the affected corridors. UAO dispositions will be requested and documented at a later date as part of the design phase for this project. Cost and scheduling estimates associated with any relocation efforts will be documented as part of the design phase. The UAOs identified on the project are summarized in **Table 1**. The responses and other correspondence from the UAOs are provided in **Appendix A**. A description of all existing and planned utilities per UAO is listed below.

Table 1 - List of Utility Owner Contact Information

Utility Owner	Contact	Email/ Phone	FACILITIES
AT&T Distribution	Alan Reynolds	AR2916@att.com	Buried Copper and Fiber (Telephone)
AT&T Transmission	Kenneth Wagner Craig Petrie	SWagner@pea-inc.com CPetrie@pea-inc.com	High-Capacity Buried Fiber
Charter	John "Smitty" Smith	John.Smith5@charter.com	Buried Cable & Overhead Facilities
City of Cocoa	John "Jack" Walsh	jwalsh@cocoafll.org	Buried Water Line for Well Field
Duke Energy Distribution	Leonardo Gonzalez	Leonardo.Gonzalez@duke-energy.com	Buried Electric for 2 street light poles
Duke Energy Transmission	Aric Rogers	ARogers@pike.com DefTransmissionGOV@duke-energy.com	No Facilities
Orange County Utilities (OCU)	Jose Hernandez Christina Crosby	Jose.Hernandez2@ocfl.net Christina.Crosby@ocfl.net	No Facilities (Possible Water, Sewer, Reclaim in the future)
Orlando Utilities Commission (OUC)	Robert Scheuerle	RScheuerle@ouc.com	Overhead Electric 12.47 kV
Sprint / T-Mobile Wireless	Jon Baker	Jon.Baker@t-mobile.com	Buried Fiber
Sprint / CenturyLink / Lumen / Embarq	Marlon Brown	Marlon.N.Brown@lumen.com	No Facilities

AT&T (Distribution)

AT&T Distribution (AT&T-D) has facilities running north-south on the east side of Dallas Boulevard. There are 2 buried fiber optic lines (24 and 48 FOC). There are also 2 buried copper lines (50 pr and 105 pr). AT&T-D also has facilities running east-west along the north side of SR 528. The westerly line is out of service. The easterly line is buried fiber optic (12 FOC).

AT&T D is anticipating relocating the four lines running north-south and the 12 Buried Fiber Optic Cable (BFOC) running east on the north side of SR 528. The rough estimate Mr. Alan Reynolds proposed for the relocation of these facilities will be between \$100,000 and \$150,000. He also stated it would be at least a six-month process from design to construction.

AT&T (Transmission)

AT&T Transmission (AT&T-T) has facilities along the north side of the project near the existing right-of-way. This fiber is a high-capacity line containing 2-2" HDPE buried conduit. There are also two manholes within the same line. This conduit does cross under Dallas Boulevard to the north. There are no known crossings under SR 528.

The facilities for AT&T-T are not in conflict with the proposed construction for this CFX project.

Charter

Charter Communications have facilities north of the existing Starry St running east-west. The western side originates there and runs west underground along the north side of Starry St until terminating just east of Dallas Blvd. Another east-west section of underground begins approximately 315 ft east of Dallas Blvd. This underground segment terminates approximately 515 ft east. Charter also has overhead facilities beginning on the west end of Starry St. This also runs along the north side of Starry St. It ends after crossing Dallas Blvd approximately 3,000 ft to the east. Charter overhead begins approximately 365 ft to the east of where the previous overhead segment ends. Charter does not have any conflicts at this time.

City of Cocoa

The City of Cocoa has an 8" water line that runs parallel to Dallas Blvd as a part of a multi-parcel well-field that pumps water to their water treatment plant located on the Deseret Ranches property south of the project area. The treated water is then pumped to the City of Cocoa.

The Sunshine 811 Ticket provided notice to the City of this PD&E Study, but no response was received. Additionally, the City owns a parcel within the public notice area, so notice of the project and public meeting was sent to the City as well, with no response. During the final stages of the PD&E Study, contact was made by Jack Walsh, P.E., Utilities Director for the City of Cocoa. He informed the design team that the City of Cocoa has a 100' non-exclusive private easement recorded in 1957, which contains the water line running from Well #10 (located on a parcel in the Wedgefield neighborhood) south to the system of other well sites located on the Deseret Ranches property that pump water to the treatment plant. The easement is located along Dallas Blvd and the 8" water line runs within this easement. Due to the late coordination of this particular utility, further investigation into the need to relocate the line and potential associated costs will need to be explored in final design.

Duke Energy (Distribution)

Duke Energy is not the main electric service provider for this area; however, Duke Energy does have facilities within the project limits. They have a small amount of buried electric supplying power to two wooden street light poles. This line is a 120/240V buried electric. It runs parallel along the west side of Dallas Boulevard. The line does change to aerial heading south beyond the project limits.

The facilities for Duke Energy (Distribution) are not in conflict with this project. However, due to a possible reconfiguration of this interchange, Duke Energy may remove these light poles as part of a new lighting design.

Duke Energy (Transmission)

Duke Energy (Transmission) has no facilities within the project limits.

Orange County Utilities (OCU)

OCU has no facilities within the project limits. However, they do have jurisdiction for water, sewer and water reclaim for this area.

Orlando Utilities Commission (OUC)

OUC has electric facilities within the project area. Their overhead lines are energized at 12.47 kV, line to line and line to neutral is 7.2kV. OUC overhead electric lines are on the east side of Dallas Blvd from south of eastbound exit ramp of SR 528. The line runs north along the east side of Dallas Blvd to just north of Starry St. There is also an overhead line at the toll plaza of the eastbound exit ramp on the north side running southeast to Dallas Blvd. This line then turns north on the west side of Dallas Blvd crossing SR 528 then becoming underground, while still heading north across Starry St. There is an additional line from the westbound toll plaza running northeast connecting to the west side of the underground electric heading north. Underground electric lines are located on the north side of Starry St running east-west from Turnbridge St, crossing Dallas Blvd to the east.

Many of the OUC overhead electric lines may require relocation for each alternative. The north-south lines on the east and west sides of Dallas Blvd may be relocated due to the proposed structures for SR 528. The lines running from both toll plazas will be removed as well.

Sprint / T-Mobile Wireless

Sprint / T-Mobile has multiple buried fibers along the project corridor. One BFOC runs parallel along the northern portion of westbound SR 528. This fiber continues along SR 528 until heading northeast to the existing right-of-way along the westbound entrance ramp. It then runs south on the west side of Dallas Boulevard, and crosses Dallas Boulevard once south of the current interchange. This BFOC then runs south along the east side of Dallas Boulevard passing through the hand hole on the southeast corner of Dallas Boulevard and the exit ramp.

The second BFOC runs along the south side of SR 528 heading east until the current eastbound exit ramp. Then this fiber runs along the south side of the exit ramp. It crosses Dallas Boulevard in a southeasterly direction into a hand hole on the southeast corner of Dallas Boulevard and the exit ramp.

From the southeast hand hole, another BFOC heads northeast parallel to the current right-of-way until it reaches the eastbound lanes of SR 528. This line continues east along the south side of

eastbound SR 528.

All of these facilities will require relocation. The work will be extensive because the splice points for the current BFOC lines are approximately 2 miles apart. The relocation will include this length of each fiber to their respective splice points. Mr. Baker is not able to provide a cost estimate due to the large nature of this relocation. He stated this would take at least a month to prepare accordingly.

Sprint / CenturyLink / Embarq / Lumen

Sprint / CenturyLink / Embarq / Lumen has no facilities within the project limits.

Utilities Assessment

Utility Impacts

AT&T (Distribution) and Sprint have indicated the need for relocation for both build alternatives. Duke Energy (Distribution) and AT&T (Transmission) have indicated that they are within the project limits but will likely be unimpacted by the build alternatives. Duke Energy has also expressed interest in relocating their facility as a result of the interchange reconfiguration. All other UAOs have responded with no facilities in the project area. Listed providers in **Table 1** should be contacted as part of the ongoing utility coordination efforts.

Table 2 lists the following UAO dispositions. Costs and scheduling as well as any UAO dispositions and agreements pertaining to the relocation of any facilities will be further investigated as part of the design phase for this project.

Table 2 - Utility Relocation Cost

Utility Owner	Description	Relocation Cost
AT&T Distribution	<p>Facilities running north-south on the east side of Dallas Boulevard. Two buried fiber optic lines (24 and 48 FOC). Two buried copper lines (50 pr and 105 pr). Facilities running east-west along the north side of SR 528. The westerly line is out of service. The easterly line is buried fiber optic (12 FOC). AT&T anticipates relocating all of their affected utilities.</p> <p>A six-month schedule for design and construction is anticipated.</p>	\$100,000 to \$150,000
City of Cocoa	<p>During the last month of the Study, the City of Cocoa reached out regarding an 8" water line that runs within the R/W of Dallas Blvd. The line will likely need to be relocated to accommodate the Interchange and due to the late hour of coordination, relocation coordination will need to be performed during final design.</p>	TBD
Duke Energy Distribution	<p>Duke Energy poles and buried facilities will likely be unaffected by the project. However, Duke Energy has expressed interest in relocating their facilities as a result of the reconfigured interchange.</p>	TBD
Orlando Utilities Commission	<p>UC has electric facilities within the project area. Many of the OUC overhead electric lines may require relocation for each alternative. The north-south lines on the east and west sides of Dallas Blvd may be relocated due to the proposed structures for SR 528. The lines running from both toll plazas will be removed as well. Relocation of these lines is anticipated, as OUC will provide service to CFX facilities.</p>	TBD
Sprint	<p>Multiple buried fibers along the project corridor. One BFOC runs parallel along the northern portion of westbound SR 528. This fiber continues along SR 528 until heading northeast to the existing right-of-way along the eastbound entrance ramp. It then runs south on the west side of Dallas Boulevard, and crosses Dallas Boulevard once south of the current interchange. This BFOC then runs south along the east side of Dallas Boulevard passing through the hand hole on the southeast corner of Dallas Boulevard and the exit ramp.</p> <p>The second BFOC runs along the south side of SR 528 heading east until the current eastbound exit ramp. Then this fiber runs along the south side of the exit ramp. It crosses Dallas Boulevard in a southeasterly direction into a hand hole on the southeast corner of Dallas Boulevard and the exit ramp.</p> <p>From the southeast hand hole, another BFOC heads northeast parallel to the current right-of-way until it reaches the eastbound lanes of SR 528. This line continues east along the south side of eastbound SR 528.</p> <p>Relocation is anticipated for all listed facilities. The anticipated relocation will extend 2 miles from the project area due to the nearest splice points for the buried fiber. No cost estimates or scheduling were provided at this time.</p>	TBD

Appendix A – 811 Sunshine Ticket

Brian Herman

From: Sunshine 811 Exactix <no-reply@exactix.sunshine811.com>
Sent: Wednesday, February 8, 2023 10:42 AM
To: Brian Herman
Subject: SSOCONF CONFIRM 2023/02/08 #00000 039302986-000 NORM DSGN NEW

CONFIRM 00000 CALL SUNSHINE 02/08/23 10:42:27ET 039302986-000 DESIGN GRID DESIGN ONLY Ticket : 039302986 Rev:000
Taken: 02/08/23 10:41ET

State: FL Cnty: ORANGE GeoPlace: ORLANDO
CallerPlace: ORLANDO
Subdivision: N/A Lot: N/A

Address :
Street : SR 528 TOLL
Cross 1 : DALLAS BLVD
Within 1/4 mile: Y

Locat: DESIGN ONLY. LOCATE AT THE INTERSECTION OF DALLAS BLVD AND SR 528 TOLL.
APPROX. 1500 FT ALONG SR 528 IN BOTH DIRECTIONS AND 1000 FT IN BOTH DIRECTIONS ALONG DALLAS BLVD AND UP TO STARRY ST.

Remarks : DESIGN ONLY

IN RESPONSE TO RECEIPT OF A DESIGN TICKET, SSOCONF PROVIDES THE ORIGINATOR OF THE DESIGN TICKET WITH A LIST OF SSOCONF MEMBERS IN THE VICINITY OF THE DESIGN PROJECT. SSOCONF DOES NOT NOTIFY SSOCONF MEMBERS OF THE RECEIPT BY SSOCONF OF A DESIGN TICKET. IT IS THE SOLE RESPONSIBILITY OF THE DESIGN ENGINEER TO CONTACT SSOCONF MEMBERS TO REQUEST INFORMATION ABOUT THE LOCATION OF SSOCONF MEMBERS' UNDERGROUND FACILITIES. SUBMISSION OF A DESIGN TICKET WILL NOT SATISFY THE REQUIREMENT OF CHAPTER 556, FLORIDA STATUTES, TO NOTIFY SSOCONF OF AN INTENT TO EXCAVATE OR DEMOLISH. THAT INTENT MUST BE MADE KNOWN SPECIFICALLY TO SSOCONF IN THE MANNER REQUIRED BY LAW. IN AN EFFORT TO SAVE TIME ON FUTURE CALLS, SAVE YOUR DESIGN TICKET NUMBER IF YOU INTEND TO BEGIN EXCAVATION WITHIN 90 DAYS OF YOUR DESIGN REQUEST. THE DESIGN TICKET CAN BE REFERENCED, AND THE INFORMATION ON IT CAN BE USED TO SAVE TIME WHEN YOU CALL IN THE EXCAVATION REQUEST.

*** LOOKUP BY MANUAL ***

Grids : 2826A8105A 2826A8105B 2826A8105C 2826A8106D 2827D8105A
Grids : 2827D8105B 2827D8105C 2827D8106D

Work date: 02/08/23 Time: 10:34ET Hrs notc: 000 Category: 6 Duration: UNKNOWN Due Date : 02/10/23 Time: 23:59ET Exp Date : 03/10/23 Time: 23:59ET Work type: DESIGN Boring: N White-lined: N Ug/Oh/Both: U Machinery: N Depth: UNK Permits: N N/A Done for : DESIGN

Company : COMPREHENSIVE ENGINEERING SERVICES INC Type: CONT Co addr : 201 S. ORANGE AVE.
Co addr2: SUITE 1300
City : ALTAMONTE SPRINGS State: FL Zip: 32701
Caller : BRIAN HERMAN Phone: 407-423-1600 Ext: 241
BestTime: 8-5
Mobile : 850-694-0607
Fax : 407-423-9614
Email : BHERMAN@CESCIVIL.COM

Submitted: 02/08/23 10:41ET Oper: BRI Chan: WEB Mbrs :
ATTFO1 KEVIN TALECKI / MIKE GAMBOA 610-200-3365
ATT / T

2901 W BUSCH BLVD.
 SUITE 711
 TAMPA, FL 33618
 Level 1: NO
 Level 2: NO
 Level 3: YES, FEES WILL VARY
 Level 4: NO

COC547 KATHERINE ENNIS 321-433-8797
 CITY OF COCOA
 351 SHEARER BLVD
 COCOA, FL 32922
 Level 1: EMAILED DRAWINGS ONLY - NO CHARGE
 Level 2: \$50.00 PER HOUR
 Level 3: \$50.00 PER HOUR
 Level 4: SERVICES NOT PROVIDED BY MEMBER

CVCFTV JOHN SMITH 407-532-8520
 CHARTER COMMUNICATIONS
 3767 ALL AMERICAN BLVD
 ORLANDO, FL 32810
 Level 1: \$91.50 PER HR / 2 HR MINIMUM REQUEST WILL NEED TO BE IN WRITING
 Level 2: \$91.50 PER HR / 2 HR MINIMUM REQUEST WILL NEED TO BE IN WRITING
 Level 3: \$55.54 PER HOUR / 2 HOUR MINIMUM
 Level 4: SERVICES NOT PROVIDED BY MEMBER

FPC322 DUKE'S CUSTOMER SERVICE CEN 407-629-1010
 DUKE ENERGY
 1150 GREENWOOD BLVD
 LAKE MARY, FL 32746
 Level 1: SERVICES NOT PROVIDED BY MEMBER
 Level 2: SERVICES NOT PROVIDED BY MEMBER
 Level 3: SERVICES NOT PROVIDED BY MEMBER
 Level 4: SERVICES NOT PROVIDED BY MEMBER

OCE979 WILL HAWTHORNE 407-690-5337
 CENTRAL FLORIDA EXPRESSWAY AUTHORITY FAX 407-690-5011
 4974 ORL TOWER RD
 ORLANDO, FL 32807
 Level 1: SERVICES NOT PROVIDED BY MEMBER
 Level 2: SERVICES NOT PROVIDED BY MEMBER
 Level 3: SERVICES NOT PROVIDED BY MEMBER
 Level 4: SERVICES NOT PROVIDED BY MEMBER

OUC582 JUAN DIAZ 407-434-4143
 ORLANDO UTILITIES COMMISSION
 6003 PERSHING AVE
 ORLANDO, FL 32822
 Level 1: NO CHARGE
 Level 2: SERVICES NOT PROVIDED BY MEMBER
 Level 3: SERVICES NOT PROVIDED BY MEMBER
 Level 4: NOT AVAILABLE

SBF02 DINO FARRUGGIO G27896@ATT.
 AT & T/ DISTRIBUTION
 6628 LAKESIDE RD
 WEST PALM BEACH, FL 33411
 Level 1: CONTACT MEMBER DIRECTLY G27896@ATT.COM
 Level 2: CONTACT MEMBER DIRECTLY G27896@ATT.COM

Level 3: CONTACT MEMBER DIRECTLY G27896@ATT.COM

Level 4: CONTACT MEMBER DIRECTLY G27896@ATT.COM

USSP01 JON BAKER 352-409-5095

SPRINT

360 S LAKE DESTINY SUITE A

ORLANDO, FL 32810

Level 1: CONTACT MARK CALDWELL FOR FEE INFORMATION.

Level 2: CONTACT MARK CALDWELL FOR FEE INFORMATION.

Level 3: CONTACT MARK CALDWELL FOR FEE INFORMATION.

Level 4: CONTACT MARK CALDWELL FOR FEE INFORMATION.