

MEMO

To: Greg Seidel, Balmoral
From: Jessica Fish, SEARCH
CC: Central Florida Expressway
Date: 9/21/2023
Re: SR 408 Westbound Capacity Improvements from I-4 to Goldenrod (CFX Project # 408-175)

On January 4, 2023, SEARCH reviewed concept plans for the capacity improvements along State Road (SR) 408 from I-4 to Goldenrod Road. The purpose of this review was to identify previously recorded cultural resources within the project area. The Study Area was defined as the parcels where the proposed widening will take place (the potential construction area) in addition to a 152-meter (500-foot) buffer to address potential viewshed effects to historic resources (**Figure 1**). The present document is for information purposes only and does not satisfy any requirements under the National Environmental Policy Act or Section 106 of the National Historic Preservation Act.

Review of the Florida Master Site File (FMSF) database indicates that one archaeological site, 131 historic buildings, one historic cemetery, and five resource groups are located within the Study Area (**Table 1**; see **Figure 1**). Of these resources, two buildings (8OR00111 and 8OR09989) and one resource group (8OR08984) are listed on the National Register of Historic Places (NRHP). In addition, 37 historic buildings, the historic cemetery (8OR09088), and four resource groups (8OR00258, 8OR00422, 8OR09612, and 8OR10041) have been recommended eligible or potentially eligible for the NRHP. The remaining resources have not been evaluated by the State Historic Preservation Office for NRHP eligibility or have been recommended ineligible.

Table 1. Previously Recorded Resources in the Study Area.

<i>Historic Buildings</i>				
FMSF No.	Address	Year Built	Surveyor Recommendation	NRHP Eligibility Status
8OR00022	125 N Lucerne Circle	ca. 1900	Ineligible for NRHP	Eligible for NRHP
8OR00111	135 Lucerne Circle NE	1893	Eligible for NRHP	NRHP listed 1979
8OR00112	500 South Magnolia	1919	Not Evaluated	Ineligible for NRHP
8OR00128	518 Delaney Street	1904	Not Evaluated	Not Evaluated
8OR00209	426 E South Street	1908	Not Evaluated	Not Evaluated
8OR00262	310 E Anderson Street	1921	Not Evaluated	Ineligible for NRHP
8OR00263	314 E Anderson Street	1908	Not Evaluated	Ineligible for NRHP
8OR00264	332 E Anderson Street	1935	Not Evaluated	Ineligible for NRHP
8OR00265	338 Anderson Street	1935	Not Evaluated	Ineligible for NRHP
8OR00266	340 E Anderson Street	1935	Not Evaluated	Ineligible for NRHP
8OR00267	400 E Anderson Street	1914	Not Evaluated	Ineligible for NRHP

Table 1. Previously Recorded Resources in the Study Area.

8OR00268	404 E Anderson Street	1913	Not Evaluated	Ineligible for NRHP
8OR00269	408 E Anderson Street	1913	Not Evaluated	Ineligible for NRHP
8OR00270	412 E Anderson Street	1913	Not Evaluated	Ineligible for NRHP
8OR00271	416 E Anderson Street	1916	Not Evaluated	Ineligible for NRHP
8OR00272	420 E Anderson Street	1919	Not Evaluated	Ineligible for NRHP
8OR00273	502 E Anderson Street	1925	Not Evaluated	Ineligible for NRHP
8OR00274	508 E Anderson Street	1919	Not Evaluated	Ineligible for NRHP
8OR00275	516 E Anderson Street	ca. 1923	Not Evaluated	Ineligible for NRHP
8OR00276	520 E Anderson Street	ca. 1916	Not Evaluated	Ineligible for NRHP
8OR00277	600 E Anderson Street	ca. 1916	Not Evaluated	Ineligible for NRHP
8OR00278	608 E Anderson Street	ca. 1916	Not Evaluated	Ineligible for NRHP
8OR00279	612 E Anderson Street	ca. 1923	Not Evaluated	Ineligible for NRHP
8OR00280	618 E Anderson Street	ca. 1916	Not Evaluated	Ineligible for NRHP
8OR00281	620 E Anderson Street	1923	Not Evaluated	Ineligible for NRHP
8OR00304	507 S Delaney Avenue	1913	Not Evaluated	Ineligible for NRHP
8OR00305	510 S Delaney Avenue	1905	Not Evaluated	Not Evaluated
8OR00312	505 S Eola Drive	1913	Not Evaluated	Ineligible for NRHP
8OR00327	502 S Lake Avenue	ca. 1910	Not Evaluated	Ineligible for NRHP
8OR00336	211 N Lucerne Circle	ca. 1925	Ineligible for NRHP	Eligible for NRHP
8OR00338	505 Margaret Court	1923	Not Evaluated	Ineligible for NRHP
8OR00346	500 S Osceola Avenue	1914	Not Evaluated	Ineligible for NRHP
8OR00347	504 S Osceola Avenue	1913	Not Evaluated	Ineligible for NRHP
8OR00446	300 E Anderson Street	ca. 1930	Ineligible for NRHP	Eligible for NRHP
8OR00461	101 W Jackson Street	n/a	Not Evaluated	Not Evaluated
8OR01389	413 Bryan Avenue	ca. 1930	Ineligible for NRHP	Not Evaluated
8OR01390	415 Bryan Avenue	ca. 1920	Ineligible for NRHP	Ineligible for NRHP
8OR01391	417 Bryan Avenue	ca. 1910	Ineligible for NRHP	Not Evaluated
8OR02524	309 S Lawsona Boulevard	ca. 1935	Ineligible for NRHP	Ineligible for NRHP
8OR02525	229 S Lawsona Boulevard	ca. 1935	Ineligible for NRHP	Ineligible for NRHP
8OR03354	415 S Delaney Avenue	ca. 1919	Ineligible for NRHP	Not Evaluated
8OR03355	430 Anderson Court	ca. 1923	Ineligible for NRHP	Ineligible for NRHP
8OR03356	426 Anderson Court	ca. 1923	Ineligible for NRHP	Ineligible for NRHP
8OR03357	424 Anderson Court	ca. 1923	Ineligible for NRHP	Ineligible for NRHP
8OR03358	427 Anderson Court	ca. 1923	Ineligible for NRHP	Ineligible for NRHP
8OR04889	1525–1537 E South Street	1942	Eligible for NRHP	Potentially Eligible for NRHP
8OR04890	324–332 Reeves Court	1942	Eligible for NRHP	Potentially Eligible for NRHP
8OR04891	316–322 Reeves Court	1942	Eligible for NRHP	Potentially Eligible for NRHP
8OR04893	334–344 Reeves Court	1942	Eligible for NRHP	Potentially Eligible for NRHP
8OR04894	310–314 Reeves Court	1942	Eligible for NRHP	Potentially Eligible for NRHP
8OR04895	335–345 Reeves Court	1942	Eligible for NRHP	Potentially Eligible for NRHP
8OR04897	1615–1621 Reeves Court	1942	Eligible for NRHP	Potentially Eligible for NRHP
8OR04898	338–340 Victor Avenue	1942	Eligible for NRHP	Potentially Eligible for NRHP
8OR04900	1633–1639 E South Street	1942	Eligible for NRHP	Potentially Eligible for NRHP
8OR04901	350–356 Victor Avenue	1942	Eligible for NRHP	Potentially Eligible for NRHP
8OR04902	342–348 Victor Avenue	1942	Eligible for NRHP	Potentially Eligible for NRHP
8OR04914	333–335 Victor Avenue	1951	Eligible for NRHP	Potentially Eligible for NRHP
8OR04915	345–347 Victor Avenue	1951	Eligible for NRHP	Potentially Eligible for NRHP
8OR04916	1721–1729 E South Street	1951	Eligible for NRHP	Potentially Eligible for NRHP
8OR06112	428 S Crystal Lake Drive	1958	Ineligible for NRHP	Ineligible for NRHP

Table 1. Previously Recorded Resources in the Study Area.

8OR06115	409 S Crystal Lake Drive	1950	Ineligible for NRHP	Ineligible for NRHP
8OR06116	3029 E South Street	1958	Ineligible for NRHP	Ineligible for NRHP
8OR06117	300 Maynard Avenue	1949	Ineligible for NRHP	Ineligible for NRHP
8OR06118	220 Maynard Avenue	1949	Ineligible for NRHP	Ineligible for NRHP
8OR08150	341–343 Victor Avenue	1951	Eligible for NRHP	Potentially Eligible for NRHP
8OR08235	506 S Garland Avenue	ca. 1917	Ineligible for NRHP	Ineligible for NRHP
8OR08472	1214 E South Street	ca. 1948	Ineligible for NRHP	Ineligible for NRHP
8OR08498	337–339 Victor Avenue	1951	Eligible for NRHP	Potentially Eligible for NRHP
8OR08549	2001 E South Street	ca. 1949	Ineligible for NRHP	Not Evaluated
8OR08550	2015 E South Street	ca. 1945	Ineligible for NRHP	Not Evaluated
8OR08551	2021 E South Street	ca. 1949	Ineligible for NRHP	Not Evaluated
8OR08562	328–330 Johnson Street	1951	Eligible for NRHP	Potentially Eligible for NRHP
8OR08563	332–331 Johnson Street	1951	Eligible for NRHP	Potentially Eligible for NRHP
8OR08564	1743–1745 E South Street	1951	Eligible for NRHP	Potentially Eligible for NRHP
8OR08565	336–338 Johnson Street	1951	Eligible for NRHP	Potentially Eligible for NRHP
8OR08566	324–326 Johnson Street	1951	Eligible for NRHP	Potentially Eligible for NRHP
8OR08569	325–327 Johnson Street	1951	Eligible for NRHP	Potentially Eligible for NRHP
8OR08570	337–339 Johnson Street	1951	Eligible for NRHP	Potentially Eligible for NRHP
8OR08571	1861–1863 E South Street	1951	Eligible for NRHP	Potentially Eligible for NRHP
8OR08572	333–335 Johnson Street	1951	Eligible for NRHP	Potentially Eligible for NRHP
8OR08573	329–331 Johnson Street	1951	Eligible for NRHP	Potentially Eligible for NRHP
8OR08990	2120 Newman Street	ca. 1935	Ineligible for NRHP	Not Evaluated
8OR09001	503 S Orange Avenue	ca. 1943	Ineligible for NRHP	Not Evaluated
8OR09009	203 N Lucerne Circle	1946	Ineligible for NRHP	Not Evaluated
8OR09032	1018 E Anderson Street	ca. 1926	Ineligible for NRHP	Not Evaluated
8OR09033	812 E Anderson Street	ca. 1918	Ineligible for NRHP	Not Evaluated
8OR09034	700 E Anderson Street	ca. 1925	Ineligible for NRHP	Ineligible for NRHP
8OR09035	720 E Anderson Street	ca. 1947	Ineligible for NRHP	Not Evaluated
8OR09036	800 E Anderson Street	ca. 1920	Ineligible for NRHP	Not Evaluated
8OR09037	806 E Anderson Street	ca. 1920	Ineligible for NRHP	Not Evaluated
8OR09038	808 E Anderson Street	ca. 1920	Ineligible for NRHP	Not Evaluated
8OR09039	1000 E Anderson Street	ca. 1924	Ineligible for NRHP	Not Evaluated
8OR09040	1104 E Anderson Street	ca. 1924	Ineligible for NRHP	Not Evaluated
8OR09041	1108 E Anderson Street	ca. 1924	Ineligible for NRHP	Not Evaluated
8OR09042	507 Daniels Avenue	ca. 1925	Ineligible for NRHP	Not Evaluated
8OR09056	500 S Eola Drive	ca. 1910	Ineligible for NRHP	Eligible for NRHP
8OR09060	505 Summerlin Avenue	ca. 1920	Ineligible for NRHP	Ineligible for NRHP
8OR09061	509 Summerlin Avenue	ca. 1920	Ineligible for NRHP	Ineligible for NRHP
8OR09064	405 S Hyer Avenue	ca. 1935	Ineligible for NRHP	Ineligible for NRHP
8OR09065	416 S Hyer Avenue	ca. 1949	Ineligible for NRHP	Ineligible for NRHP
8OR09066	415 S Hyer Avenue	ca. 1949	Ineligible for NRHP	Ineligible for NRHP
8OR09071	420 Daniels Avenue	ca. 1948	Ineligible for NRHP	Ineligible for NRHP
8OR09072	417 Daniels Avenue	ca. 1948	Ineligible for NRHP	Ineligible for NRHP
8OR09073	416 Daniels Avenue	ca. 1948	Ineligible for NRHP	Ineligible for NRHP
8OR09074	412 Daniels Avenue	ca. 1948	Ineligible for NRHP	Ineligible for NRHP
8OR09075	408 Daniels Avenue	ca. 1948	Ineligible for NRHP	Ineligible for NRHP
8OR09076	708–710 E South Street	ca. 1949	Ineligible for NRHP	Ineligible for NRHP
8OR09077	712 E South Street	ca. 1949	Ineligible for NRHP	Ineligible for NRHP
8OR09078	718–720 E South Street	ca. 1948	Ineligible for NRHP	Ineligible for NRHP

Table 1. Previously Recorded Resources in the Study Area.

8OR09079	800 E South Street	ca. 1935	Ineligible for NRHP	Ineligible for NRHP
8OR09080	814 E South Street	ca. 1930	Ineligible for NRHP	Ineligible for NRHP
8OR09081	900 E South Street	ca. 1935	Ineligible for NRHP	Ineligible for NRHP
8OR09082	1004 E South Street	ca. 1935	Ineligible for NRHP	Ineligible for NRHP
8OR09114	332–334 McJordan Avenue	1951	Eligible for NRHP	Potentially Eligible for NRHP
8OR09157	Garland Avenue	ca. 1942	Ineligible for NRHP	Not Evaluated
8OR09187	336–338 E South Street	1951	Eligible for NRHP	Potentially Eligible for NRHP
8OR09224	211 N Lucerne Circle	1916	Ineligible for NRHP	Eligible for NRHP
8OR09568	1877–1879 E South Street	1951	Eligible for NRHP	Potentially Eligible for NRHP
8OR09569	340–344 McJordan Street	1951	Eligible for NRHP	Potentially Eligible for NRHP
8OR09570	328–330 McJordan Avenue	1951	Eligible for NRHP	Potentially Eligible for NRHP
8OR09989	500 S Orange Avenue	1966	Eligible for NRHP	NRHP listed 2012
8OR10148	712 Anderson Street	ca. 1958	Ineligible for NRHP	Ineligible for NRHP
8OR10149	4215 Summerlin Avenue	ca. 1945	Ineligible for NRHP	Ineligible for NRHP
8OR11186	1216 E Anderson Street	ca. 1954	Ineligible for NRHP	Not Evaluated
8OR11187	1212 E Anderson Street	ca. 1953	Ineligible for NRHP	Not Evaluated
8OR11188	1206 E Anderson Street	ca. 1954	Ineligible for NRHP	Not Evaluated
8OR11437	506 Hyer Avenue	ca. 1920	Ineligible for NRHP	Not Evaluated
8OR11455	1010 Anderson Avenue	ca. 1960	Ineligible for NRHP	Not Evaluated
8OR11456	1114 Anderson Avenue	ca. 1949	Ineligible for NRHP	Not Evaluated
8OR11457	1122 Elmwood Street	ca. 1952	Ineligible for NRHP	Not Evaluated
Archaeological Site				
FMSF No.	Name	Time Period	Surveyor Recommendation	NRHP Eligibility Status
8OR10062	Center for Performing Arts Site	Nineteenth-century American, 1821–1899; Twentieth-century American, 1900–present	Ineligible for NRHP	Ineligible for NRHP
Cemeteries				
FMSF No.	Name	Year Established	Condition	NRHP Eligibility Status
8OR09088	Greenwood Cemetery	ca. 1880	Well maintained	Eligible for NRHP
Resource Groups and Historic Districts				
FMSF No.	Name	Period of Significance	NRHP Eligibility Status	
8OR00258	Lake Cherokee Historic District	Late twentieth century	Eligible for NRHP	
8OR00422	Downton Orlando Historic District	Late nineteenth- and early twentieth century	Eligible for NRHP	
8OR08984	Lake Lawsona Historic District	American twentieth-century; Boom Times, 1921–1929; Post-Reconstruction, 1880–1897; WWI and Aftermath, 1917–1920; ca. 1887–1949	NRHP Listed 2019	
8OR09612	Orlando Reeves Terrace	World War II & Aftermath, 1941–1950	Eligible for NRHP	
8OR10041	South Florida Railroad	American 1821–present; Nineteenth-century American, 1821–1899; Disston Era of Expansion & Consolidation, 1881–1899	Eligible for NRHP	

This area of downtown Orlando has been subjected to numerous cultural resource surveys (**Table 2, Figure 2**), although the majority of these are centered on the Interstate 4 interchange and the eastern and western ends of the Study Area are comparatively unsurveyed. Portions of the Study Area that have been subjected previously to Module Three-compliant survey typically will not need additional archaeological survey but may need an updated architectural history survey.

Table 2. Cultural Resource Surveys Conducted within the Study Area.

FMSF No.	Title	Year	Consultant
17	Historical, Architectural, and Archaeological Survey of Orlando, Florida	1978	Carr and Werndli
2427	Historic Properties Survey of Lake Eola Heights, Lake Lawsona, Park Lake/Highland and Spring Lake in the City of Orlando, Florida	1990	Historic Property Associates
3008	Downton Orlando Historic Resource Survey Update	1991	Elliott and Logsdon
3228	Orlando Neighborhood Survey Project	1992	Elliot and Logsdon
5707	Cultural Resource Assessment Survey Interstate 4 Section 2 Project Development and Environment Study from Bee Line Expressway (S.R. 528) to S.R. 472 Interchange, Orange, Seminole, and Volusia Counties, Florida	1999	Almy, Marion
6783	Section 106 Effects Determination for the I-4 Interim Improvements from S.R. 423 (John Young Parkway) to S.R. 436 Semoran Boulevard) Orange and Seminole Counties, Florida	2000	Janus Research
12573	Cultural Resource Assessment Survey Report Central Florida Commuter Rail Transit (CFCRT) Environmental Assessment, Volusia, Seminole, Orange, and Osceola Counties, Florida	2005	Archaeological Consultants, Inc. (ACI)
12992	A Cultural Resource Assessment Survey E Robinson Street from Mills Avenue to S Crystal Lake Drive and Along S Crystal Lake Drive from E Robinson Street to Just South of Anderson Street City: Orlando County: Orange	2006	Janus Research
13412	Central Florida Light Rail Transit System, Downton CSXT Corridor Aerial Alternative, Cultural Resource Assessment Survey	1999	Janus Research
14900	I-4 Ultimate Improvement Project Additional Ponds and Improvements Cultural Resources Information (242484-4) I-4 from South of US 441/OBT to South of Ivanhoe Boulevard, Orlando, Orange County	2007	Janus Research
15944	Cultural Resource Reconnaissance Survey Six Segments of South Street, Anderson Street, Magnolia Avenue, and Orange Avenue to be Transferred to the City of Orlando in Orange County, Florida	2008	Chambless and Fulk
18638	Cultural Resource Assessment Survey Re-evaluation of Interstate 4 (State Road 500) Ultimate from South of Orange Blossom Trail to South of Ivanhoe Boulevard, Orange County, Florida	2011	Janus Research
19584	Tech Memo No. 4: Cultural Resources Effects Evaluation for the City of Orlando Sidewalks Project Work Zones 12, 13, 14, and 20, Orange County, Florida	2012	Chambless, et al.

Table 2. Cultural Resource Surveys Conducted within the Study Area.

19585	Technical Memorandum No. 5: Cultural Resources Effects Evaluation for the City of Orlando Sidewalks Project Work Zones 2, 3, 4, 5, 6, 8, 10, 18, and 21	2013	Salo, et al.
20068	I-4 CRAS Re-evaluation from West of Kirkman Road (SR 435) to North of Sanlando Springs Road (SR 434)	2013	Janus Research
20807	Cultural Resource Assessment Survey for Phase 2 of the City of Orlando Sidewalks Project, Orange County, Florida	2014	Bartlett et al.
21506	Cultural Resources Desktop Analysis and Field Review for Two I-4 Ultimate Design Changes	2015	Chambless, Elizabeth
25282	FM No. 437634-1-52-01, SR 441 (Goldenrod Road) from SR 408 to SR 50 (Colonial Drive) Safety Improvements, Orange County, Florida	2018	Armstrong et al.
26372	Cultural Resource Assessment Survey of the OUC Pershing to Azalea 230kV Transmission Line, Orlando, Orange County, Florida	2018	ACI
27153	Lake Davis-Greenwood Historic District Survey Report	2019	Cress, Dana B.

Given the number of NRHP-listed and -eligible resources in proximity to the Study Area, the lack of cultural resource survey at the east and west ends of the project corridor, and the presence of numerous evaluated resources in the Study Area, a Phase I Cultural Resource Assessment Survey (CRAS) is recommended for this project.

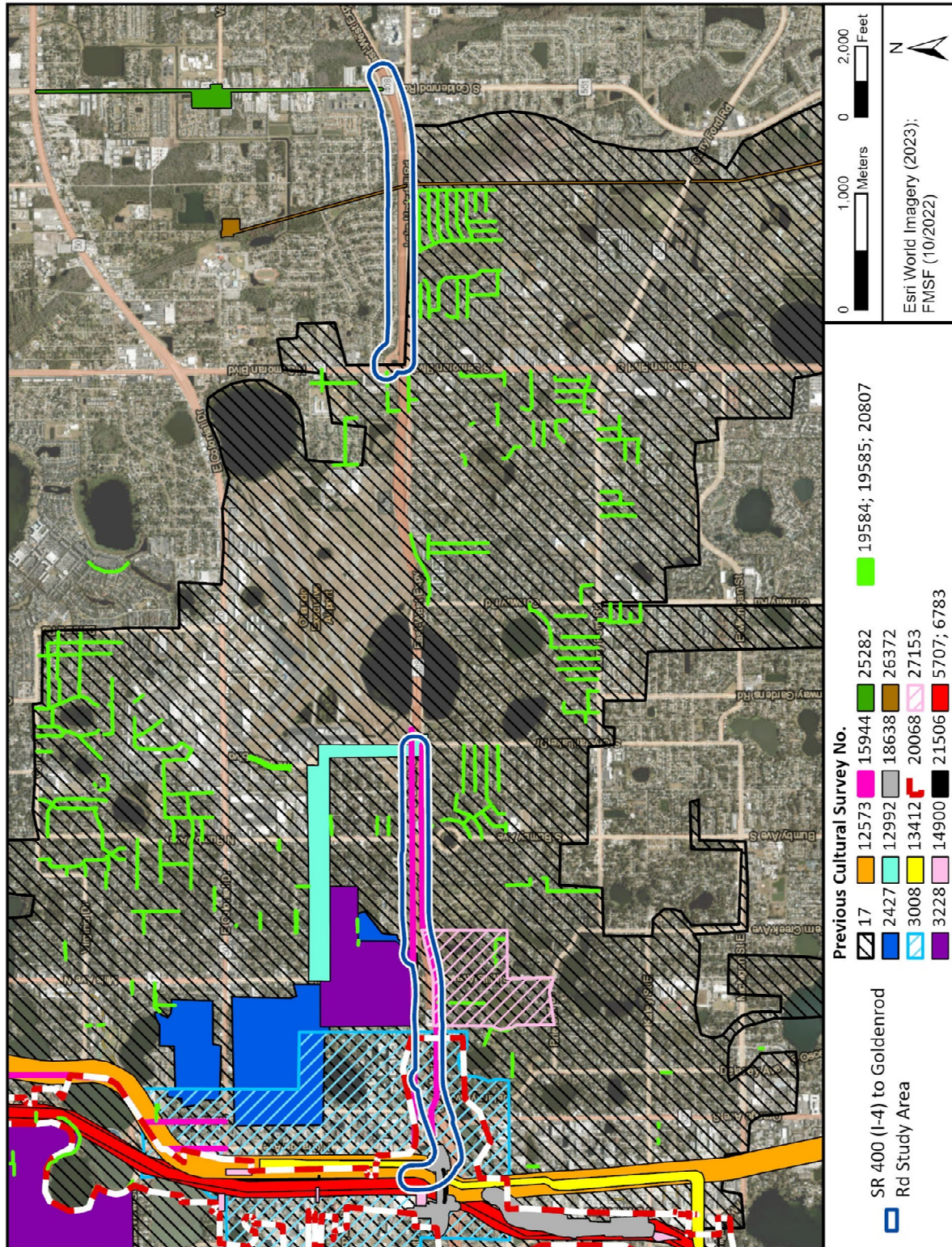


Figure 2. Cultural resource surveys conducted in the SR 436 to Goldenrod Study Area.