



FLEX LANES



SR 417 / SR 429 FLEX LANES

FACT SHEET

407-244-4974

Construction@CFXway.com

www.CFXway.com

@DriveEPASS

SUMMER 2024

PROJECT DESCRIPTION

The Central Florida Expressway Authority is keeping drivers safe and moving by introducing Flex Lanes to its system. This innovative feature allows the left shoulder to temporarily open to traffic when an incident occurs in one or more of the right lanes, resulting in their closure. It is being built as part of the latest capacity improvement projects on State Road 417 (Central Florida GreeneWay) and State Road 429 (Daniel Webster Western Beltway). The Flex Lanes are anticipated to open in the summer of 2024.

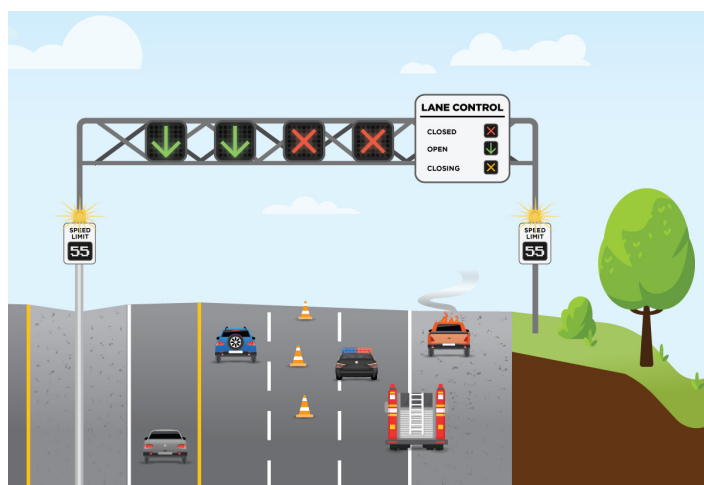
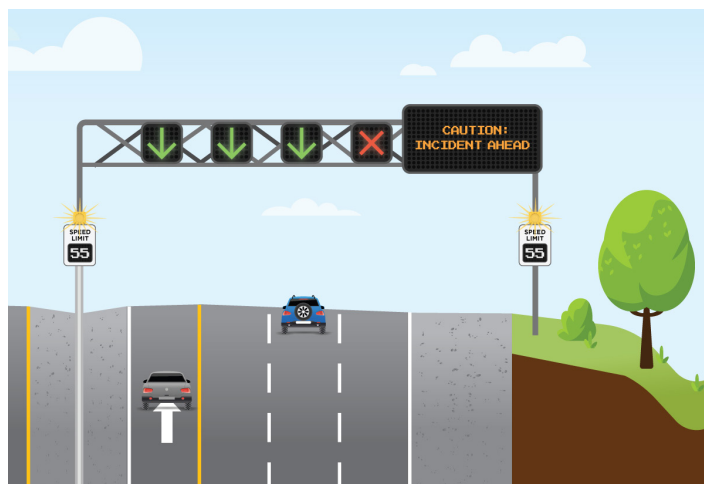
These lanes will help keep traffic moving and improve safety during times of significant incidents on the roadway. If a serious crash slows traffic, the Flex Lane will open to get traffic past the crash site at a reduced speed.

★ DRIVER EXPERIENCE

The Flex Lanes will be controlled by a system of dynamic overhead messaging signs. Over each lane green arrows will signify open lanes and red X's will show which lanes are closed. Digital speed limit signs will be used to advise drivers of the speed limit through the corridor. Additional overhead signs will alert drivers of the roadway conditions ahead.

The Federal Highway Administration (FHWA) has identified the dynamic use of a shoulder lane to relieve congestion that results from incidents on roadways as part of its Advanced Traffic Management Strategy. Numerous states across the nation are safely using this strategy. Other names used to describe this strategy including Part Time Shoulder Use and in this case, Flex Lanes.

ANTICIPATED LAUNCH:
SUMMER 2024



The regional Central Florida Expressway Authority is responsible for the planning, design, construction, operation and maintenance of a 125-mile limited-access expressway system to serve the five-county region. CFX's system includes SR 408 (Spessard L. Holland East-West Expressway), SR 528 (Martin Andersen Beachline Expressway), SR 417 (Central Florida GreeneWay), SR 429 (Daniel Webster Western Beltway), SR 414 (John Land Apopka Expressway), SR 429 (Wekiva Parkway), SR 538 (Poinciana Parkway), State Road 453 and State Road 451.

Central Florida Expressway Authority: 4974 ORL Tower Road, Orlando, FL 32807
Phone: 407.690.5000 | Fax: 407.690.5011 | Email: construction@cfxway.com

SR 417 / SR 429 FLEX LANES

FACT SHEET

CENTRAL
FLORIDA
EXPRESSWAY
AUTHORITY

FLEX
LANES

? MORE ABOUT FLEX LANES

The 21-mile Flex Lanes on SR 417 will help traffic get around incidents between International Drive and SR 528 (Martin B. Andersen Beachline Expressway). As an indication of the scale of this initiative, 55 overhead sign gantries are planned along the SR 417 project corridor.

The second Flex Lanes will be located along 13 miles of SR 429 from Tilden Road to SR 414. This stretch of SR 429 will contain 31 overhead sign gantries.



📍 FLEX LANES LOCATION MAP

