

CENTRAL FLORIDA EXPRESSWAY AUTHORITY

**AGENDA
ENVIRONMENTAL STEWARDSHIP COMMITTEE MEETING
May 30, 2024
10:00 a.m.**

**Meeting location: Central Florida Expressway Authority
4974 ORL Tower Road
Orlando, FL 32807
Pelican Conference Room**

A. CALL TO ORDER

B. PUBLIC COMMENT

Pursuant to Section 286.0114, Florida Statutes and CFX Rule 1-1.011, the Environmental Stewardship Committee provides for an opportunity for public comment at the beginning of each regular meeting. The Public may address the Committee on any matter of public interest under the Committee's authority and jurisdiction, regardless of whether the matter is on the Committee's agenda but excluding pending procurement issues. Public Comment speakers that are present and have submitted their completed Public Comment form to the Recording Secretary at least 5 minutes prior to the scheduled start of the meeting will be called to speak. Each speaker shall be limited to 3 minutes. Any member of the public may also submit written comments which, if received during regular business hours at least 48 hours in advance of the meeting, will be included as part of the record and distributed to the Committee members in advance of the meeting.

C. APPROVAL OF FEBRUARY 22, 2024 ENVIRONMENTAL STEWARDSHIP COMMITTEE MEETING MINUTES (action item)

D. AGENDA ITEMS

- 1. SR 515 NORTHEAST CONNECTOR EXPRESSWAY PHASE 2 PROJECT DEVELOPMENT AND ENVIRONMENT (PD&E) STUDY** – *Will Hawthorne, Director of Transportation Planning and Policy and Sunsera Gates, Senior PD&E Project Manager, VHB (info item)*
- 2. SR 417 SANFORD AIRPORT CONNECTOR PROJECT DEVELOPMENT AND ENVIRONMENT (PD&E) STUDY** – *Will Hawthorne, Director of Transportation Planning and Policy (info item)*

E. OTHER BUSINESS

(CONTINUED ON PAGE 2)

F. ADJOURNMENT

This meeting is open to the public.

Section 286.0105, Florida Statutes states that if a person decides to appeal any decision made by a board, agency, or commission with respect to any matter considered at a meeting or hearing, they will need a record of the proceedings, and that, for such purpose, they may need to ensure that a verbatim record of the proceedings is made, which record includes the testimony and evidence upon which the appeal is to be based.

Persons who require translation services, which are provided at no cost, should contact CFX at (407) 690-5000 x5316 or by email at Malaya.Bryan@CFXWay.com at least three (3) business days prior to the event.

In accordance with the Americans with Disabilities Act (ADA), if any person with a disability as defined by the ADA needs special accommodations to participate in this proceeding, then they should contact the Central Florida Expressway Authority at (407) 690-5000 no later than two (2) business days prior to the proceeding.

C. Approval of Minutes

CENTRAL FLORIDA EXPRESSWAY AUTHORITY

AMENDED MINUTES ENVIRONMENTAL STEWARDSHIP COMMITTEE MEETING February 22, 2024

Location: Central Florida Expressway Authority
4974 ORL Tower Road, Orlando, FL 32807
Pelican Conference Room

Committee Members Present:

Charles Lee, Citizen Representative
Richard Durr, Seminole County Representative
Maurice "Mo" Pearson, Citizen Representative
Timothee Sallin, Lake County Representative
Brittany Sellers, City of Orlando Representative

Committee Member Participating by Phone:

Beth Jackson, Orange County Committee Chairman

Committee Members Not Present:

Robert Mindick, Osceola County Representative
Jim Barfield, Brevard County Representative

Staff Present:

Michelle Maikisch, Executive Director
Glenn Pressimone, Chief of Infrastructure
Will Hawthorne, Director of Transportation & Policy
Mala Iley, Recording Secretary

A. CALL TO ORDER

The meeting was called to order at approximately 10:05 am by Chairman Jackson.

B. PUBLIC COMMENT

Ms. Mala Iley, Recording Secretary announced there was no public comment. There were no written public comments received by the deadline.

C. APPROVAL OF THE FEBRUARY 23, 2023 MEETING MINUTES

A motion was made by Mr. Lee and seconded by Mr. Pearson to approve the February 23, 2023 minutes as presented.

The motion carried unanimously with five (5) committee members in attendance voting AYE by voice vote. One (1) committee member, Ms. Jackson voting AYE by phone. Mr. Mindick and Mr. Barfield were not present.

D. AGENDA ITEMS

1. PD&E PROJECT UPDATE

Mr. Will Hawthorne, Director of Transportation Planning and Policy provided the Committee with an overview of current and upcoming PD&E projects for CFX. Including statuses on SR 528 Farm Access Bridge Removal, SR 417 Capacity Improvements, SR 429 Capacity Improvements, SR 538 Southport Expressway, SR 515 Northeast Expressway Phase 2, and SR 417 Sanford Connector.

Mr. Lee provided multiple maps to the Committee (attached as **Exhibit "A"**) with his comments and concerns regarding the Southport Connector and the Northeast Connector.

Discussion ensued.

(This item was presented for information only. No committee action was taken.)

2. ACCEPTANCE OF SYSTEMWIDE LANDSCAPING ASSESSMENT REPORT

Ms. Christina Hite, Founding Partner at Dix-Hite. presented the Systemwide Landscaping Assessment Report. Ms. Hite advised a study was done to evaluate the condition of the landscaping with the Central Florida Expressway Authority Right of Way. This study reviewed ways to improve the maintenance, safety, and aesthetics. Which included doing an evaluation on landscape needs, prioritizing investments, and enhancing safety within budget constraints.

Discussion ensued.

Ms. Maikisch and Mr. Pressimone thanked Ms. Hite and the Committee for their feedback and suggestions.

A motion was made by Mr. Dunn and seconded by Mr. Lee to accept Systemwide Landscaping Assessment Report as presented.

The motion carried unanimously with five (5) committee members in attendance voting AYE by voice vote. One (1) committee member, Ms. Jackson voting AYE by phone. Mr. Mindick and Mr. Barfield were not present.

E. OTHER BUSINESS

Ms. Maikisch thanked the committee for their service.

Chairman Jackson announced the new Chairman will be Richard Durr from Seminole County.

Chairman Jackson would like to see a future in-depth presentation on the different types and functionality of wildlife crossings. She said she will leave schedule for that presentation up to the incoming Chairman, Mr. Durr.

Chairman Jackson announced that the next Environmental Stewardship Committee meeting is scheduled for May 23, 2024 at 10:00 a.m.

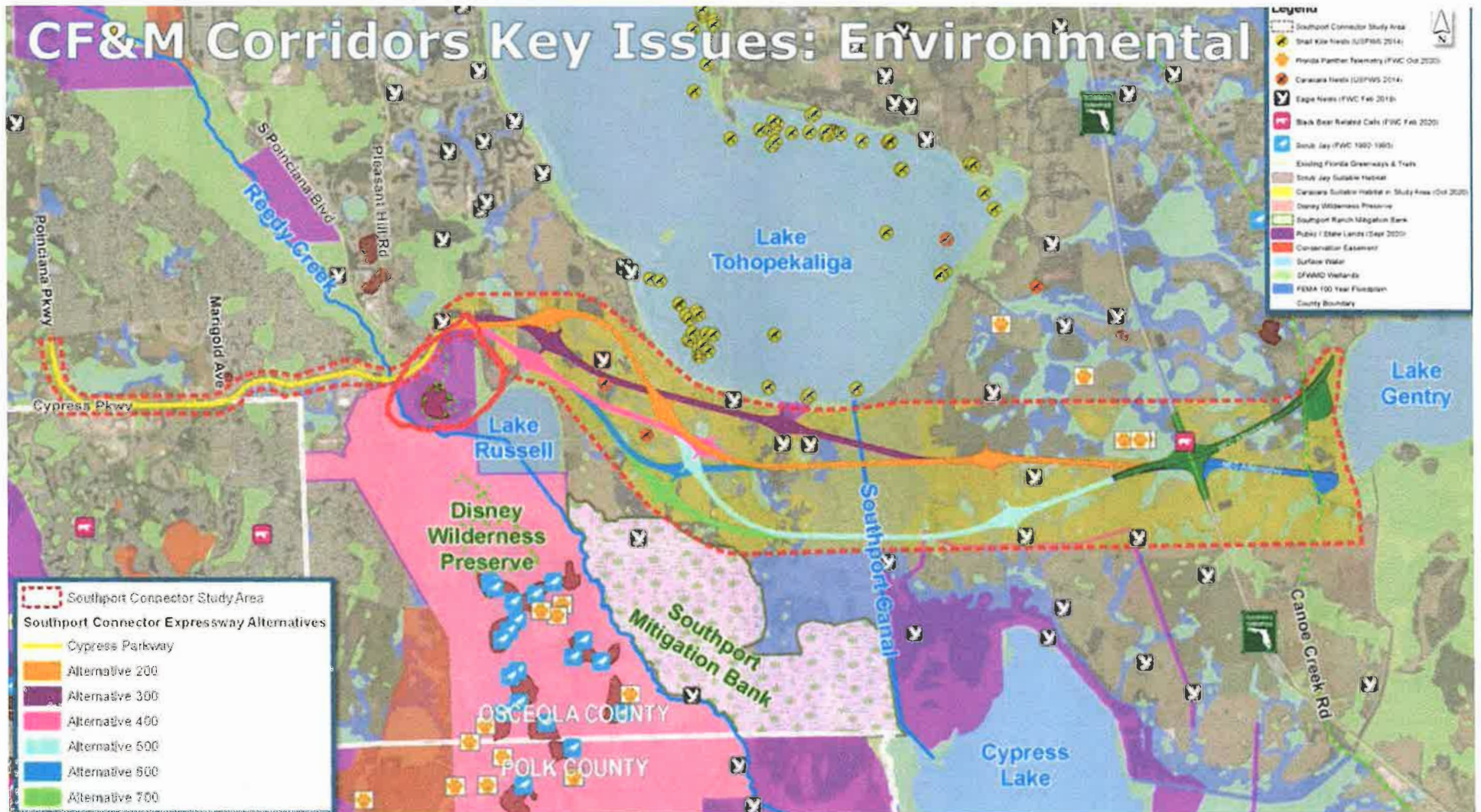
F. ADJOURNMENT

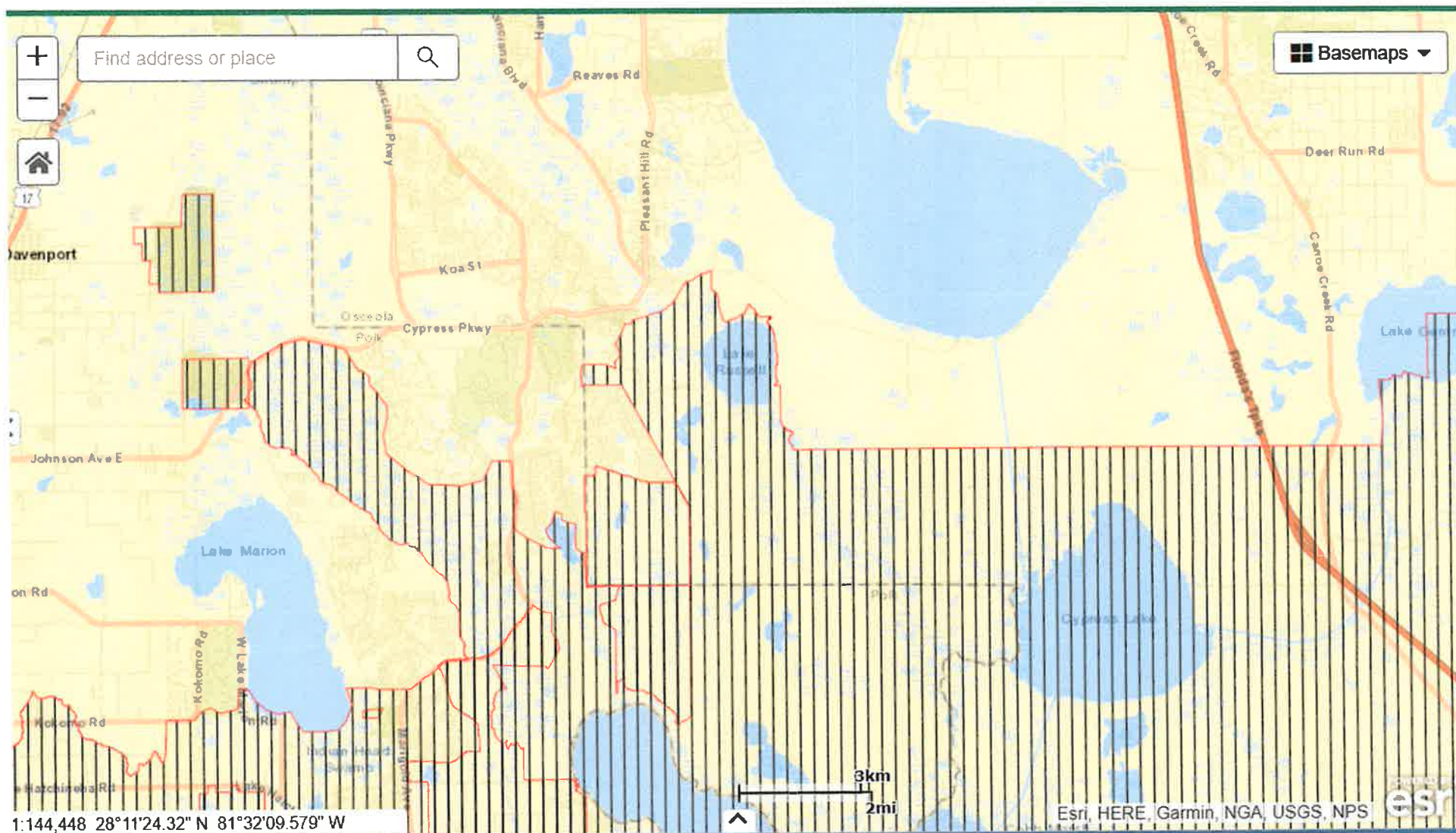
Chairman Jackson adjourned the meeting at 11:28 a.m.

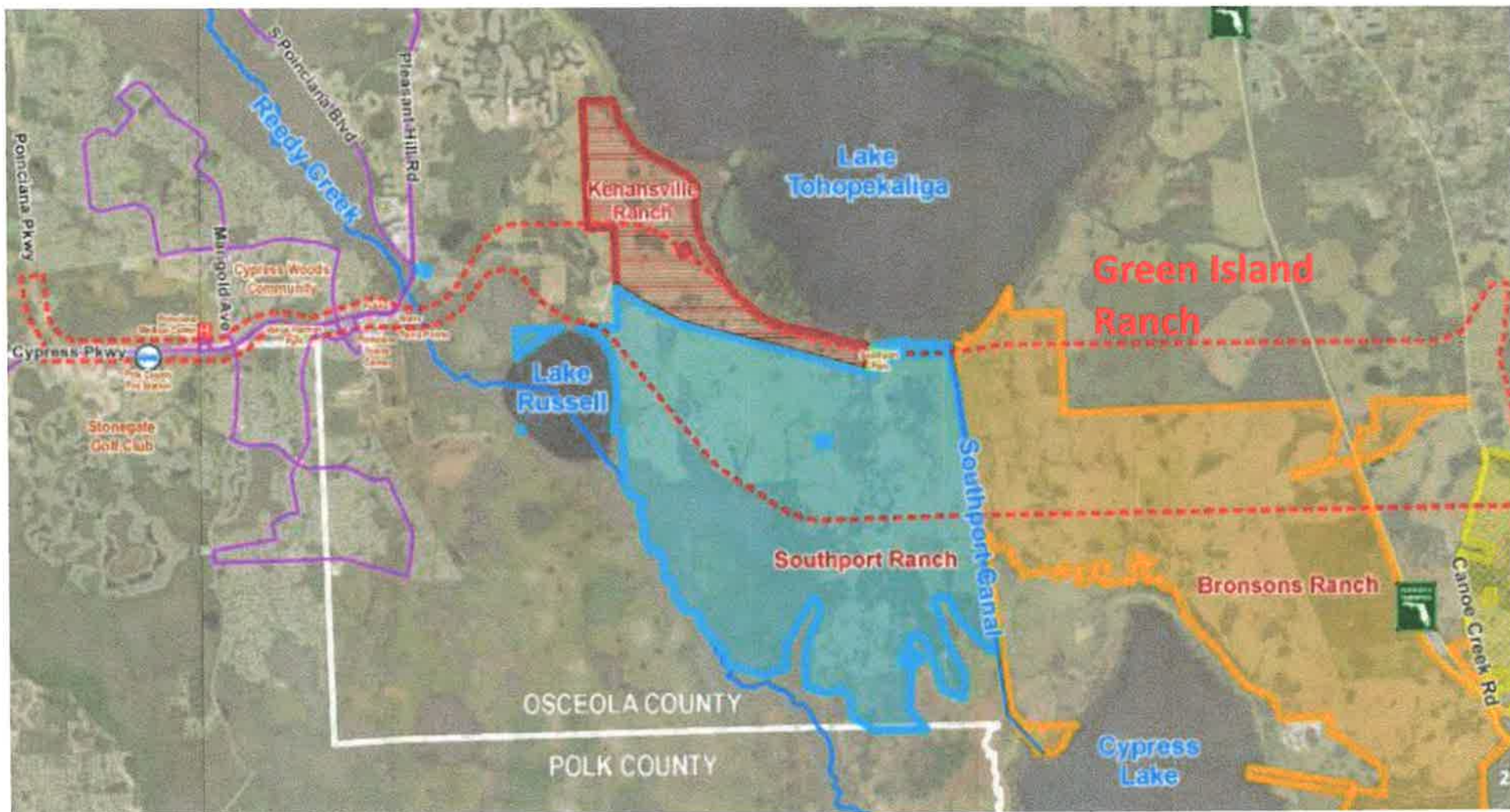
Minutes approved on _____, 2024.

Pursuant to the Florida Public Records Law and CFX Records Management Policy, audio tapes of all Board and applicable Committee meetings are maintained and available upon request to the Records Management Liaison Officer at publicrecords@CFXway.com or 4974 ORL Tower Road, Orlando, FL 32807.

Exhibit "A"

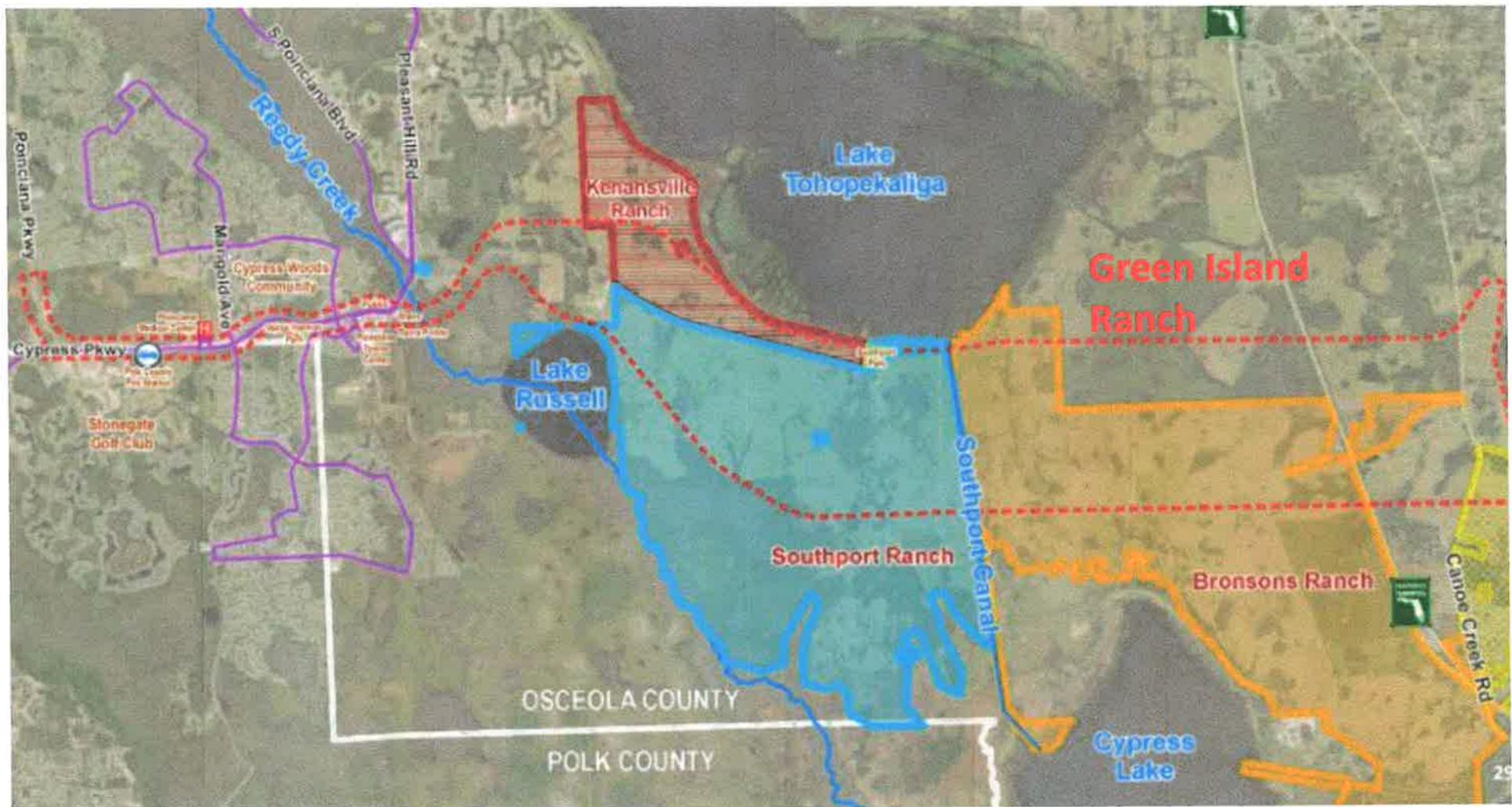






FLORIDA WILDLIFE CORRIDOR SOUTH OF W. LAKE TOHO





D.1.



SR 515 Northeast Connector Expressway Phase 2 Project Development & Environment (PD&E) Study

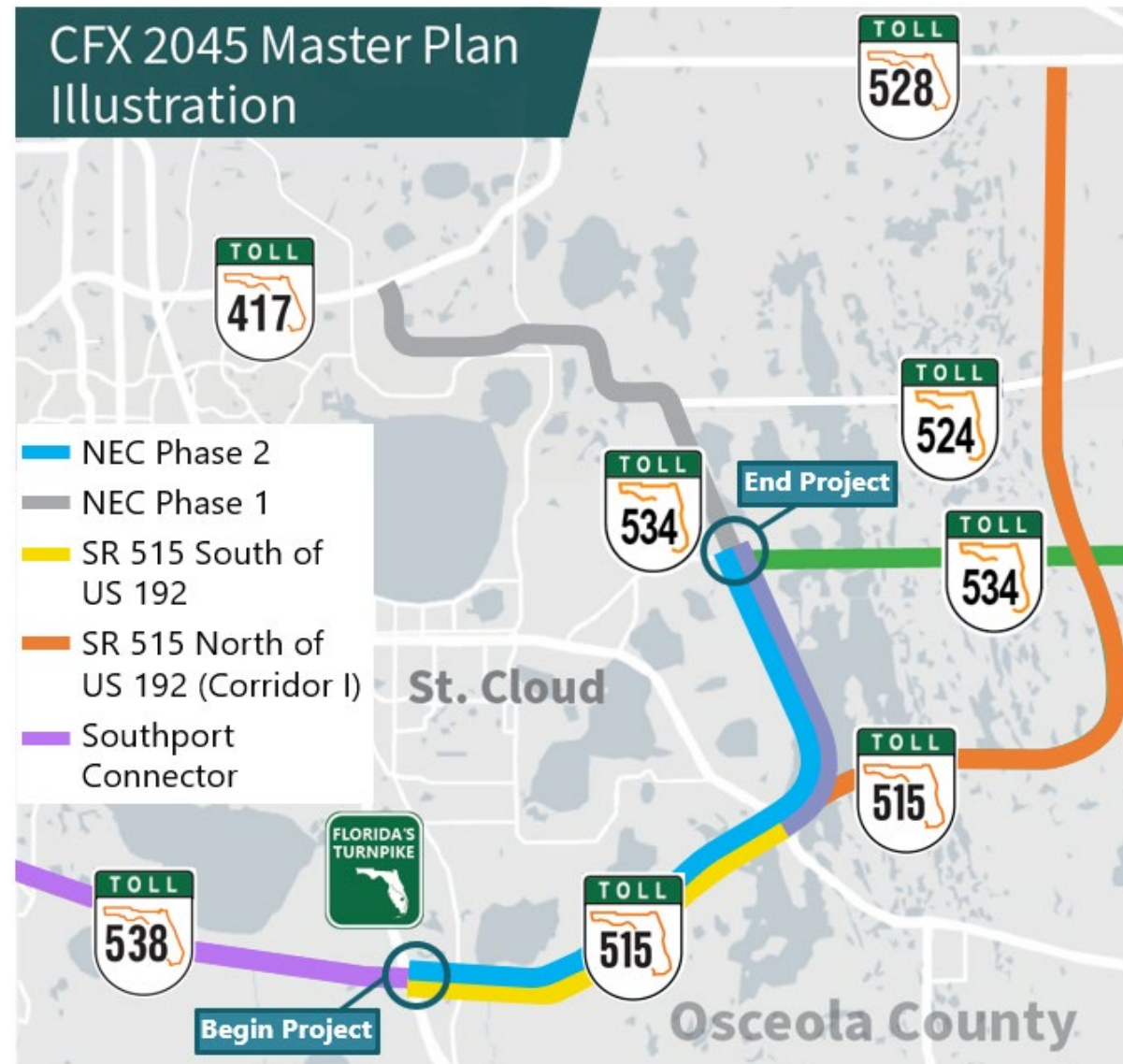
Environmental Stewardship Committee

Will Hawthorne, PE, CFX Director of Transportation Planning and Policy
Sunserea Gates, PE, VHB

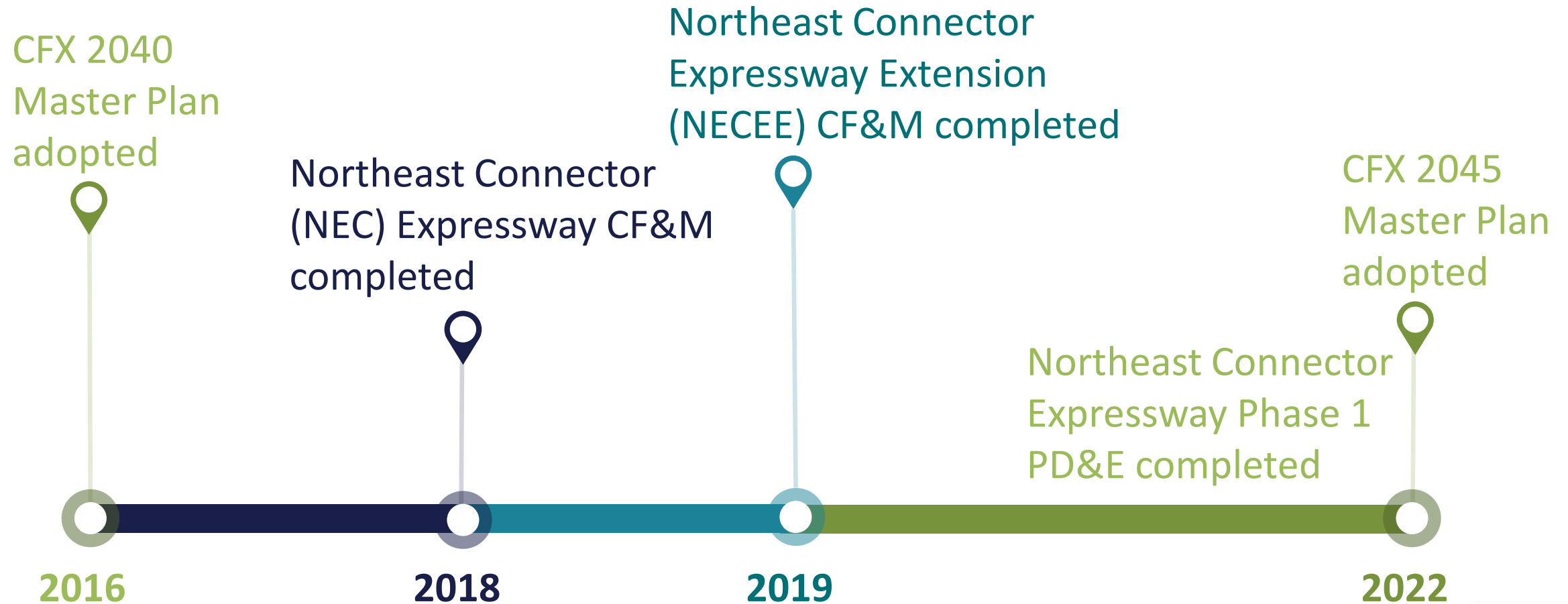
— May 30, 2024 —

Background

- CFX 2045 Master Plan Outer Beltway (SR 515)
- CFX system linkage to SR 538, Florida's Turnpike, US 192, and SR 534

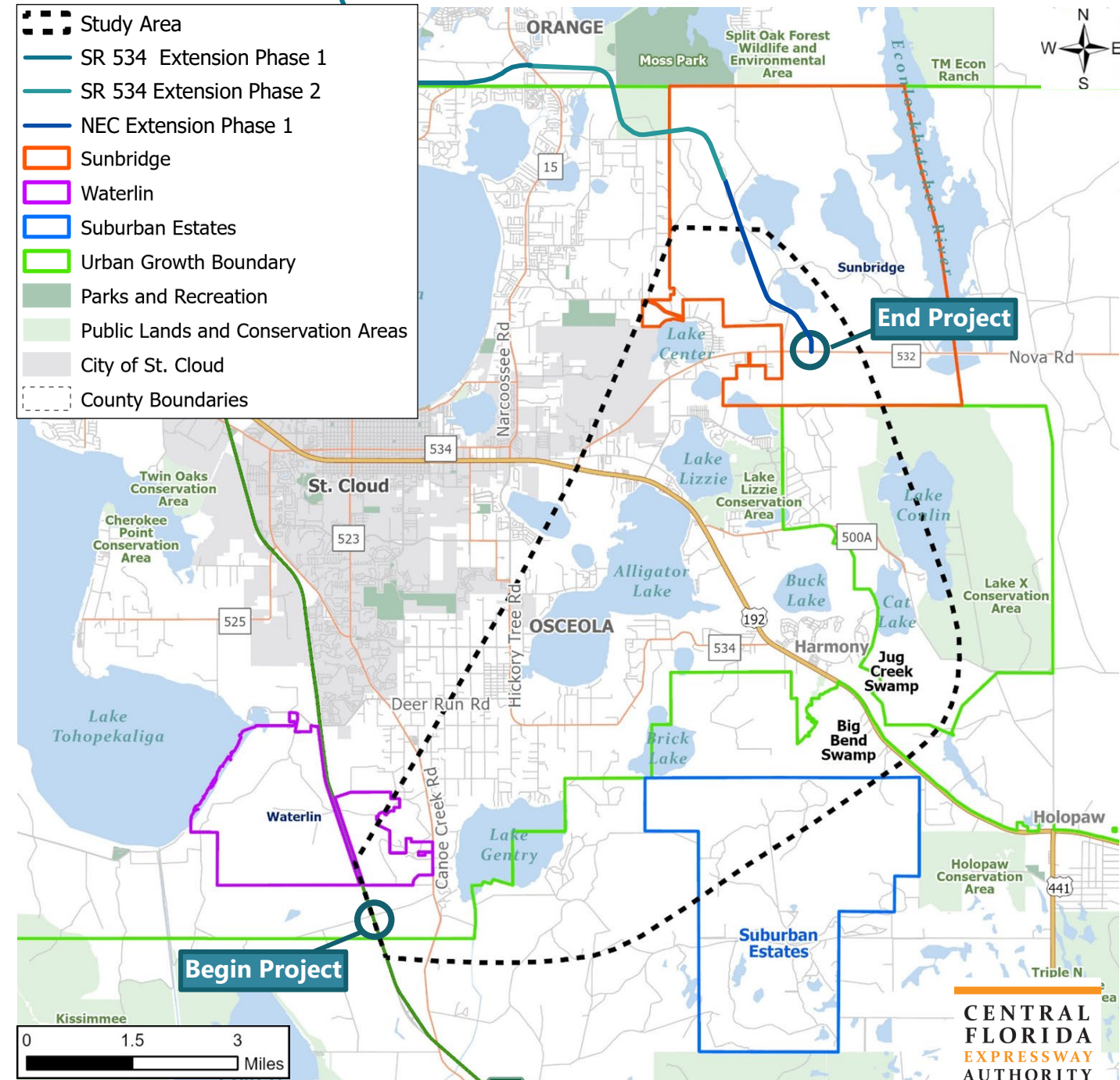


Project History



Study Area

- 15- to 20-mile expressway
- Southwest terminus at proposed Southport Connector Expressway/ Florida's Turnpike
- Northern terminus is SR 534/Nova Road
- Full interchange at US 192



Purpose and Need

Osceola Transportation Southeast Area Transportation Study (SEATS):

- NEC needed by 2040

Population Growth:

- 3.6% recent annual growth
- Projected to increase by 37% by 2050

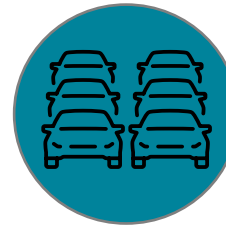
Planned Development:

- 12 Mixed-Use Districts
- 18 more Planned Developments

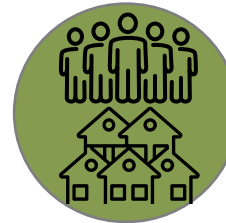
US 192 only existing east-west corridor



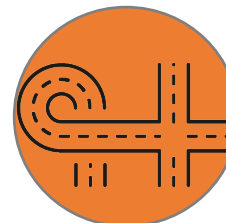
Provides System Linkage



Addresses Anticipated Future Traffic Needs



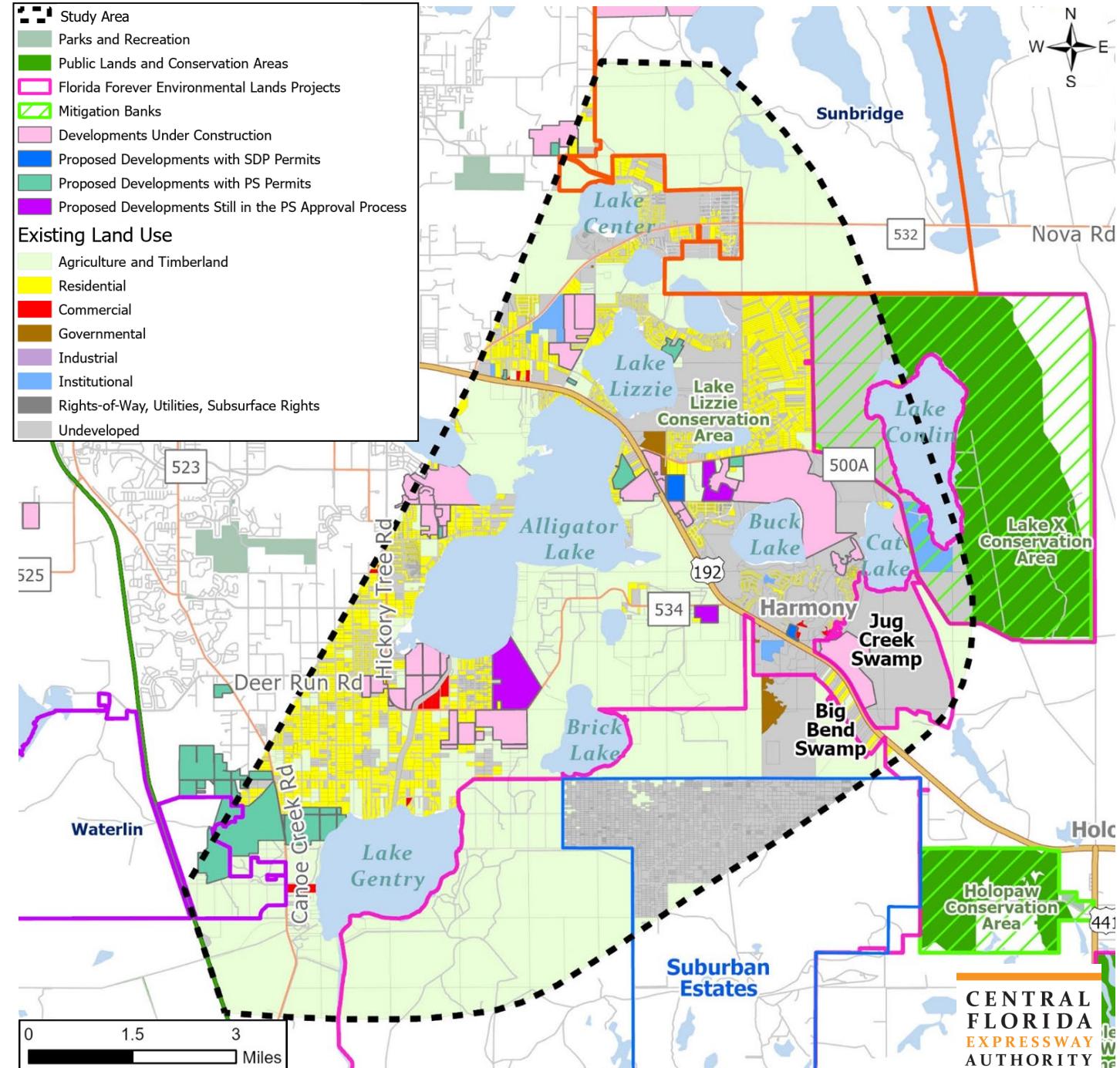
Supports Socioeconomic Growth and Planned Development



Provides Additional East-West Regional Connectivity

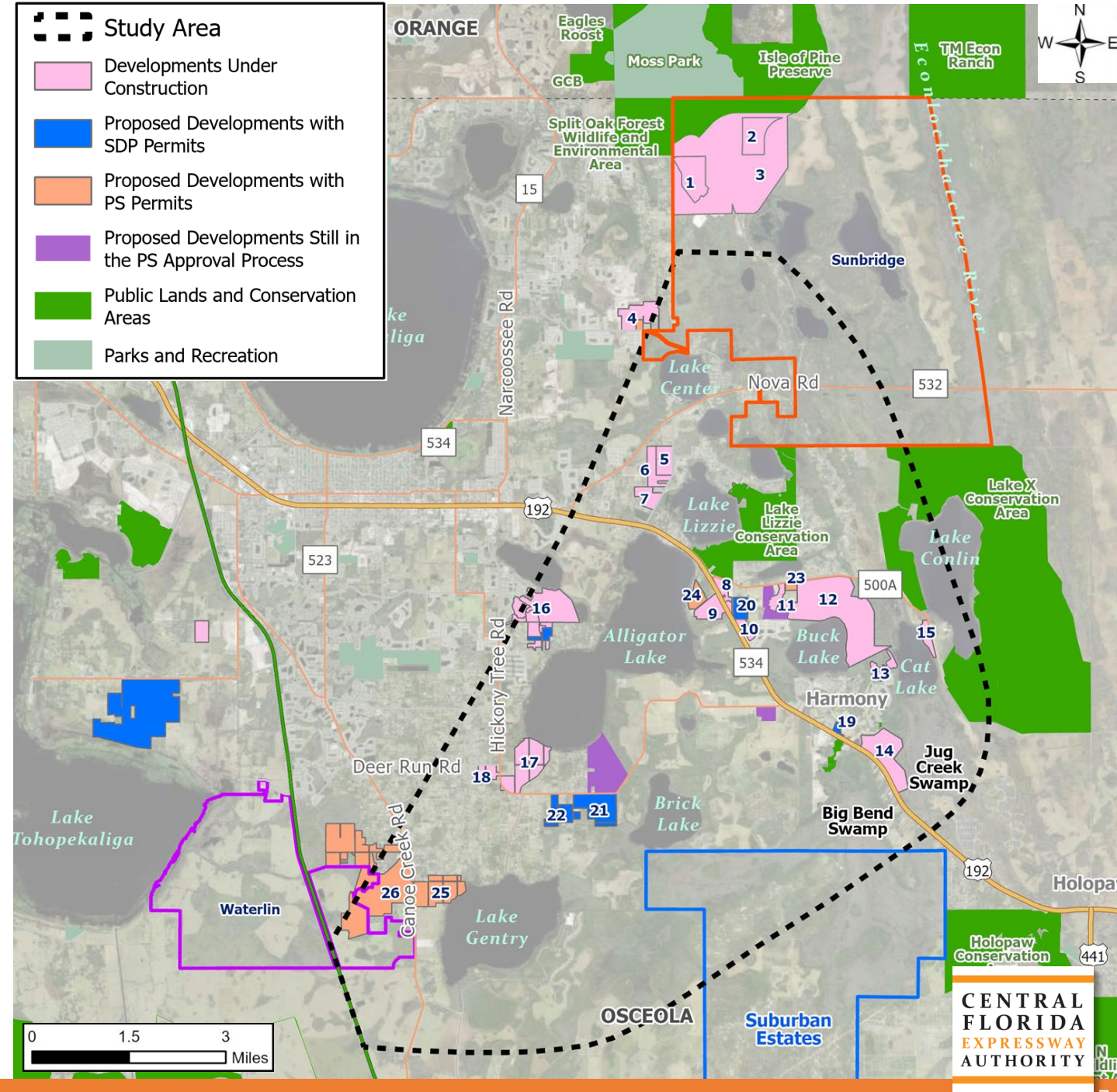
Sociocultural Constraints

- Land Use
 - Substantial Residential
 - Planned Development
 - Agricultural Lands
- Community Resources
 - Schools
 - Religious Facilities
 - Harmony Golf Preserve
 - Medical Facilities



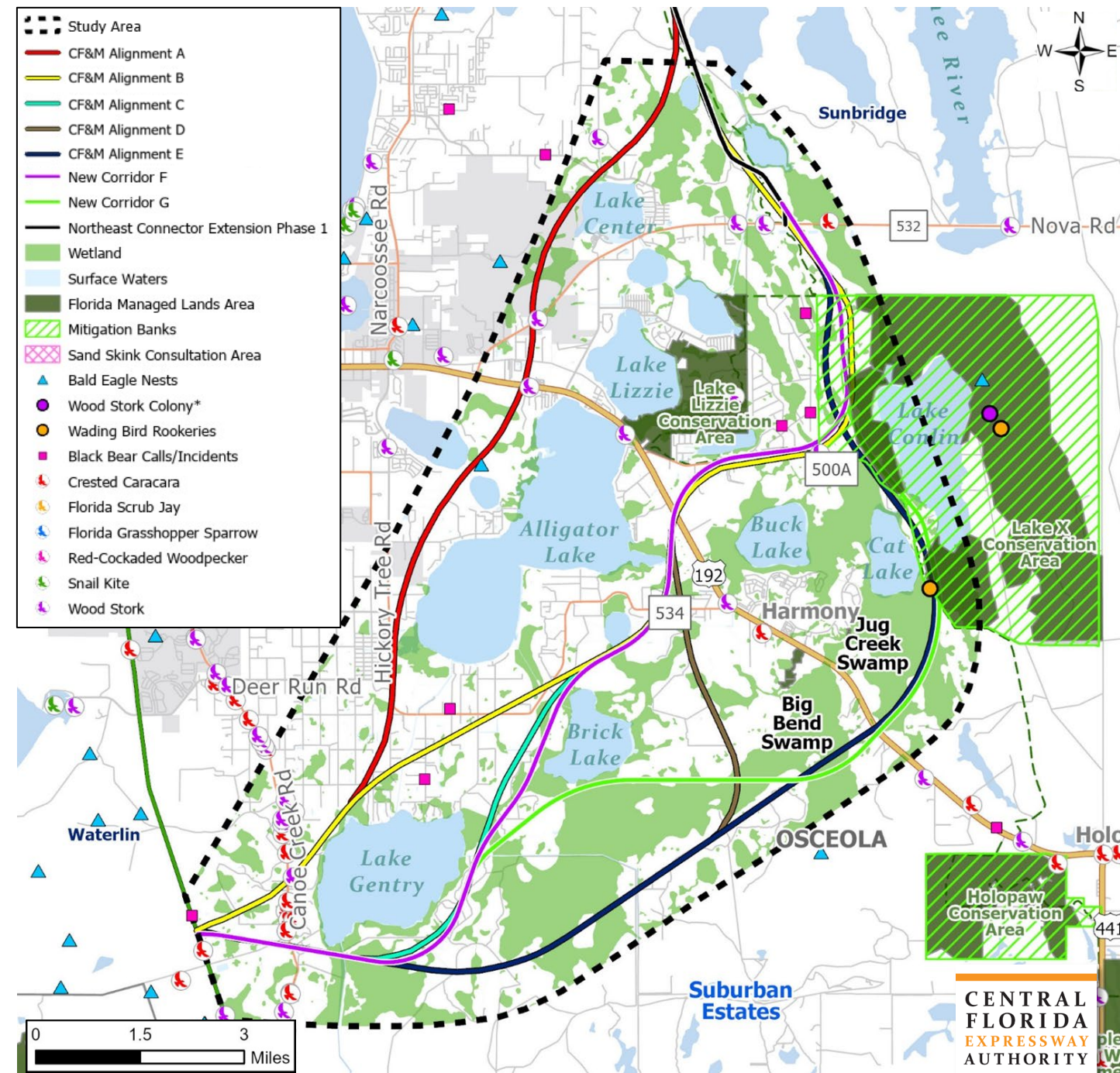
Planned Developments

- Under Construction
 - The Villages at Harmony (#12)
 - Harmony Central (#15)
 - Pine Glen (#9)
- Approved
 - Triple H Ranch (#21)
 - Hickory Village (#22)
- Pending Approval
 - Lake Gentry Landings (#25)
 - Canoe Creek Phase 3 (#26)



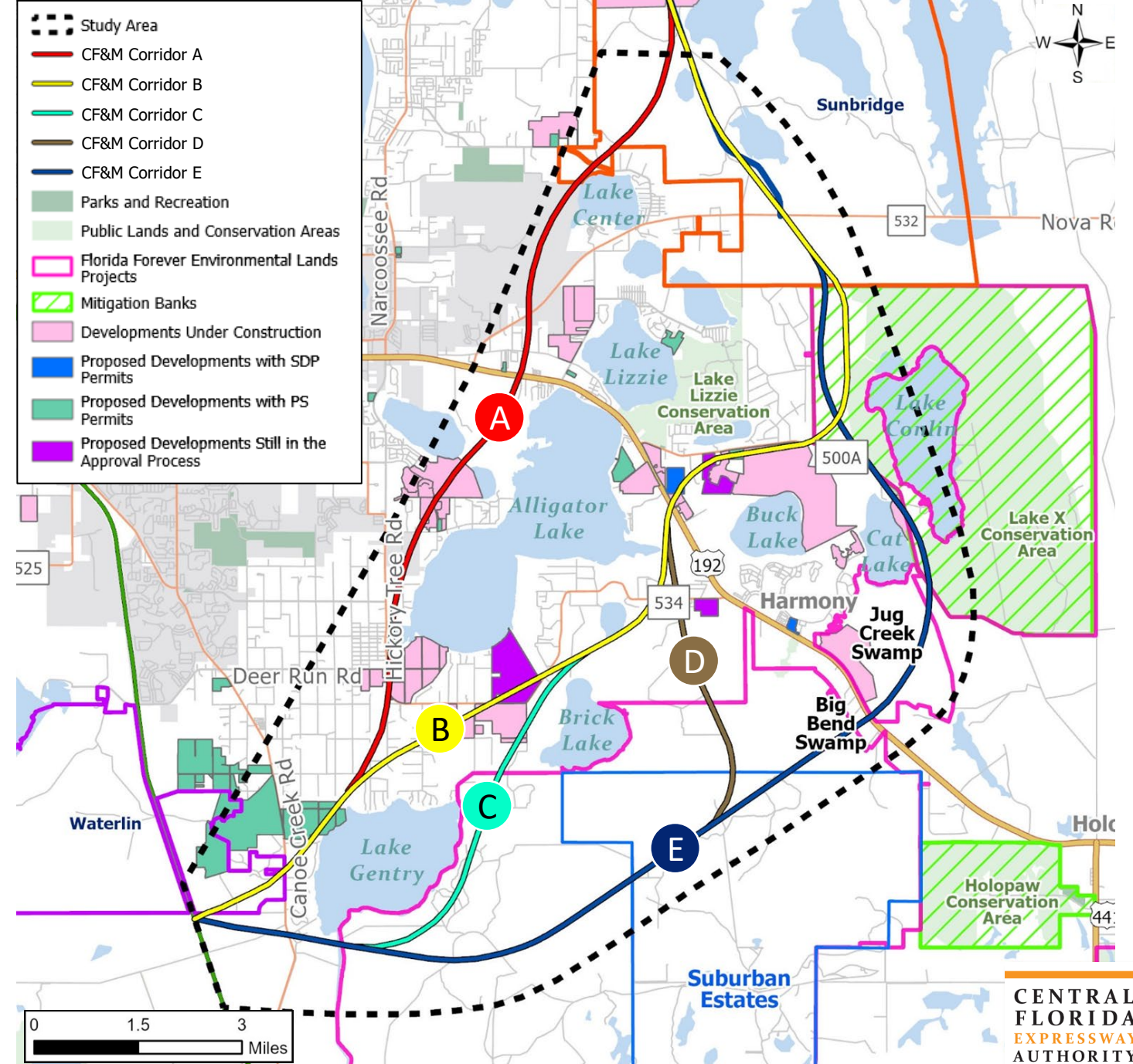
Natural Constraints

- Public Lands/Conservation Areas
 - Lake Lizzie Conservation Area
 - Lake X Conservation Area
 - Lake X Ranch Mitigation Bank
- Wetlands and Surface Waters
- Protected Species and Habitat



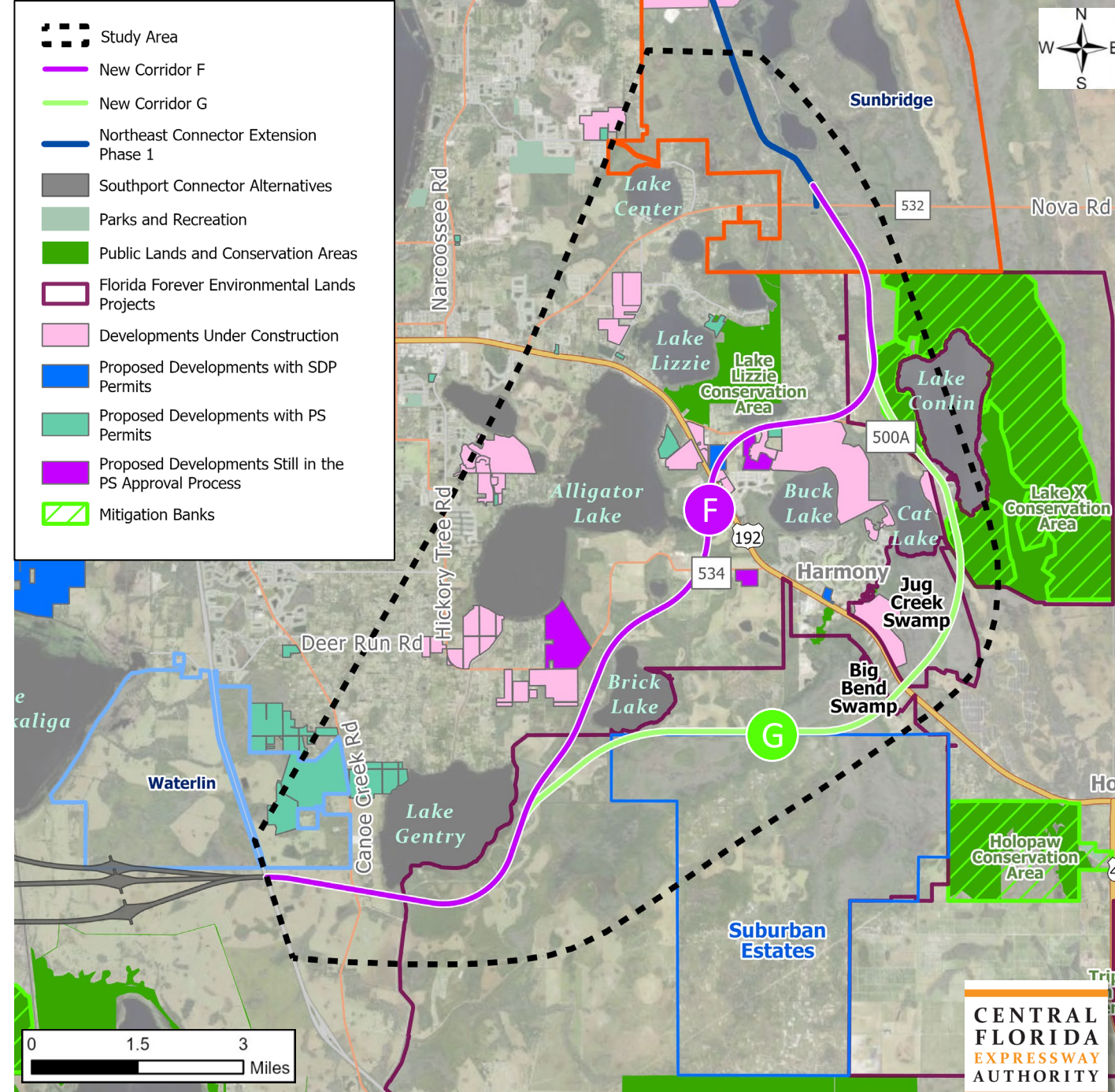
Initial NEC CF&M Corridors

- Five CF&M corridors for further evaluation
- Corridor A, B and C:
 - Higher social resource effects to residential areas
- Corridor D and E:
 - Higher natural resource and recreation land effects



New Corridors

- Two additional corridors developed to minimize effects
- Corridor F
 - Refinement to Corridor C
 - Minimizes impacts to proposed development
- Corridor G
 - Refinement to Corridor E
 - Lowest community impacts



Agency & Stakeholder Input

- Related Projects
- Planned Developments (Osceola County and City of St. Cloud)
- SFWMD Conservation Easements and Criteria
- Alternatives and Engineering Considerations
- Environmental Effects
- Mobility Alternatives



PD&E Schedule

	2024			2025				2026		
	Q2	Q3	Q4	Q1	Q2	Q3	Q4	Q1	Q2	Q3
Notice to Proceed	★									
ESC Project Kickoff Meeting	★									
Data Collection										
EAG, PAG, CEG & ESC Meetings		★	★							
Corridor Evaluation										
Public Kickoff Meeting			★							
Alternatives Evaluation										
Draft PD&E Study Reports										
EAG, PAG, CEG, & ESC Meetings						★				
Alternatives Public Workshop							★			
EAG, PAG, CEG, & ESC Closeout Meetings									★	
Public Hearing									★	
Finalize PD&E Study Reports										
CFX Review/Study Complete										★



CENTRAL
FLORIDA
EXPRESSWAY
AUTHORITY

THANK YOU

D.2.



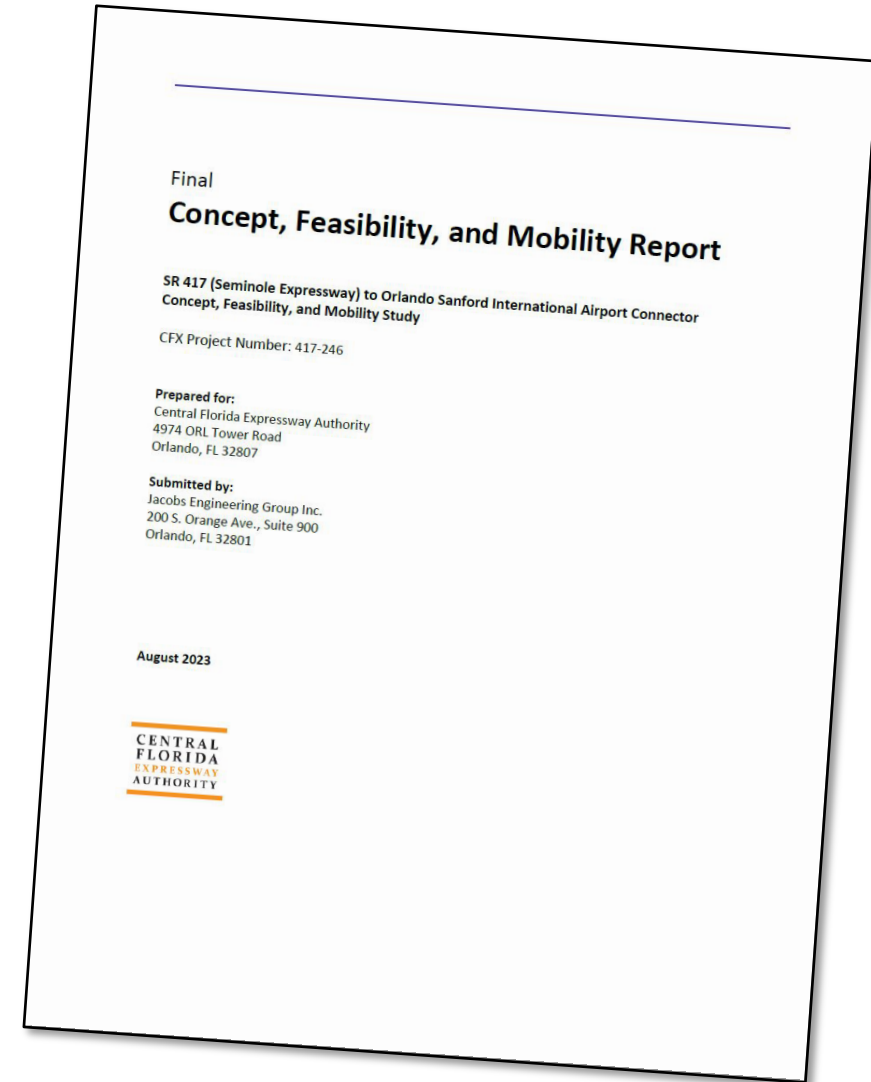
**SR 417 Sanford Airport Connector
Project Development & Environment (PD&E) Study**
Environmental Stewardship Committee

Will Hawthorne, PE, CFX Director of Transportation Planning and Policy

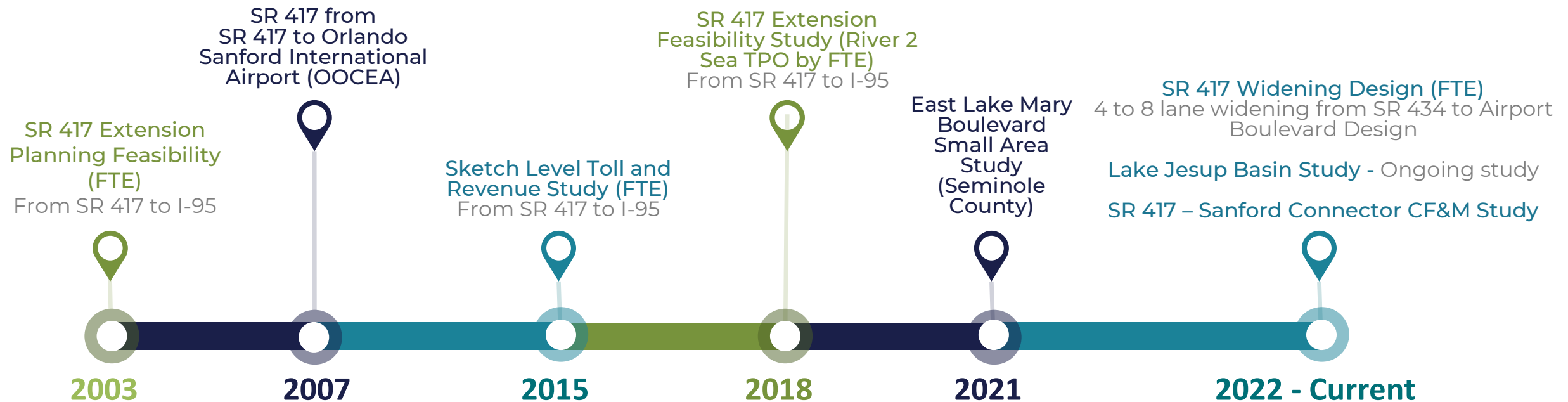
— May 30, 2024 —

Project Background

- In 2023, CFX completed CF&M Study to evaluate a new direct expressway connection between SR 417 and the Orlando Sanford International Airport
- Four alternatives evaluated
- CFX Board approved CF&M Study and authorized a more detailed PD&E Study to further evaluate the alternatives
- At the request of the Environmental Stewardship Committee, the PD&E Study will also evaluate an elevated viaduct alternative along East Lake Mary Boulevard

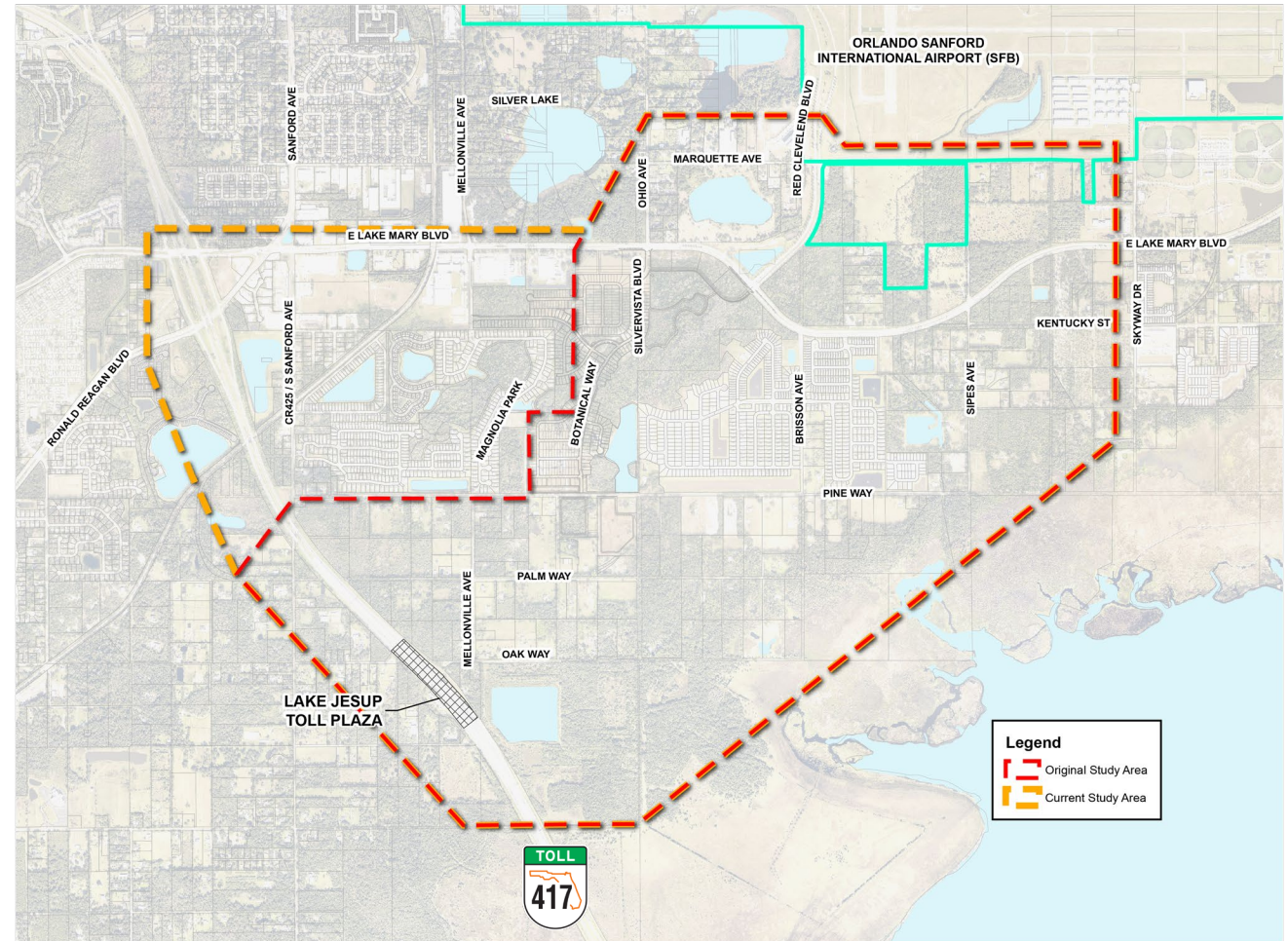


Project History



SR 417 - Sanford Airport Connector Study Area

- Original CF&M study area included the area between SR 417 and the Orlando Sanford International Airport
- Study area for PD&E Study has been expanded to include East Lake Mary Boulevard between SR 417 and the Orlando Sanford International Airport



Purpose and Need

Orlando Sanford International Airport

- Strategic Intermodal System Strategic Growth Commercial Service Airport
- 91% increase in enplanements through 2037
- 400% increase in air freight tonnage through 2037

Population Growth

- Seminole County - 11.4% growth from 2010 to 2020
- Projected to increase another 21% by 2050

Planned Development

- Numerous new residential developments
- Additional residential and commercial development planned

East Lake Mary Boulevard provides access to Orlando Sanford International Airport

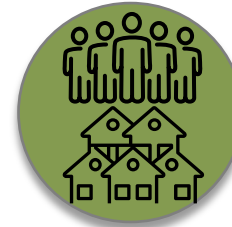
- Long delays at the SR 417 interchange
- Roadway and intersections nearing capacity



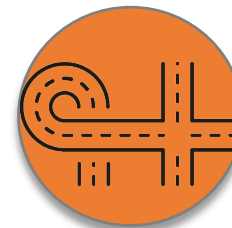
Enhances Regional Connectivity and Mobility



Addresses Anticipated Future Traffic Needs



Supports Socioeconomic Growth and Planned Development



Improves Modal Connectivity

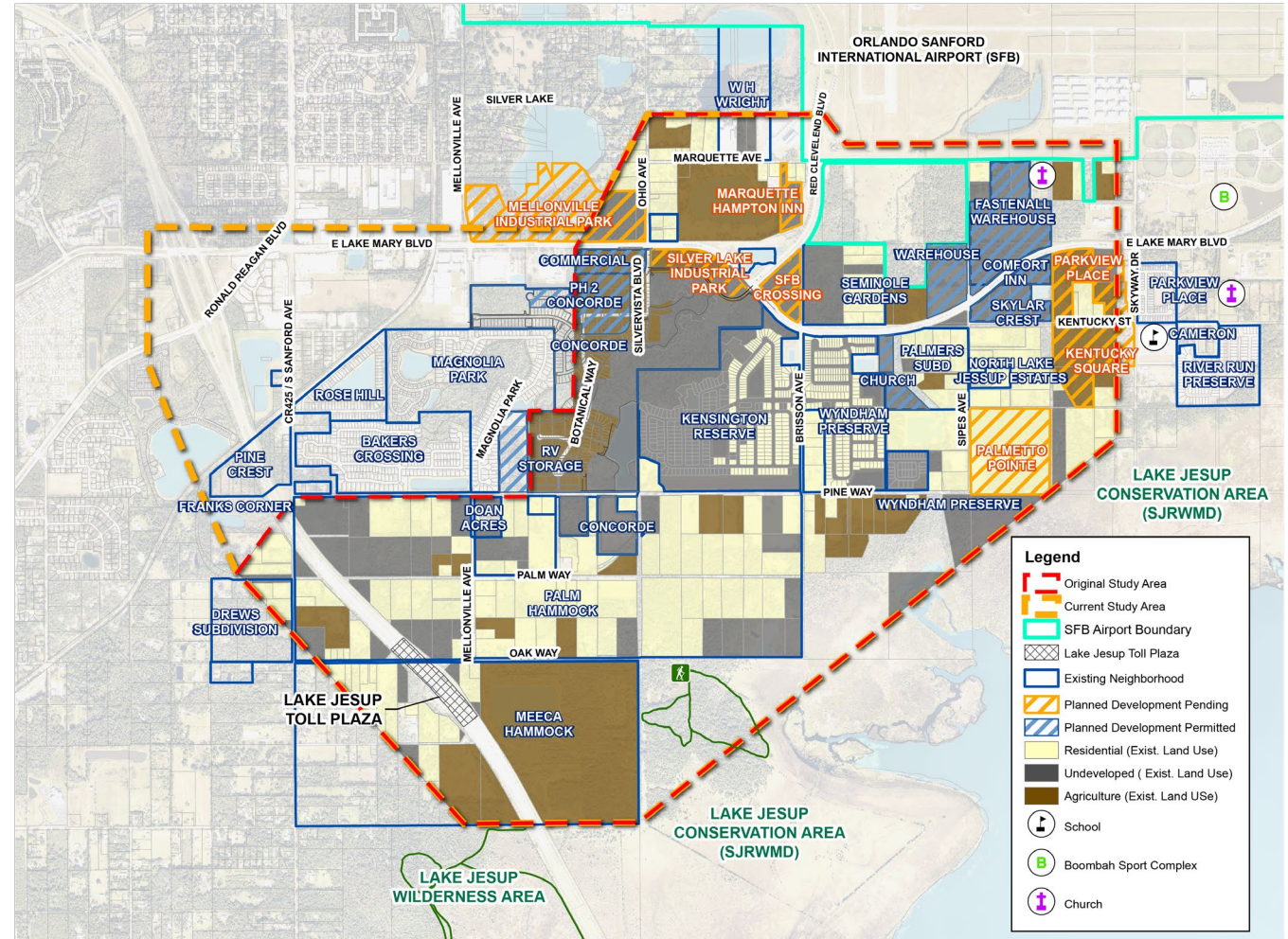
Sociocultural Constraints

Land Use

- Numerous existing residential neighborhoods
- Planned residential and commercial development
- Agricultural and conservation lands

Community Resources

- Churches
- Boombah Sports Complex
- Schools



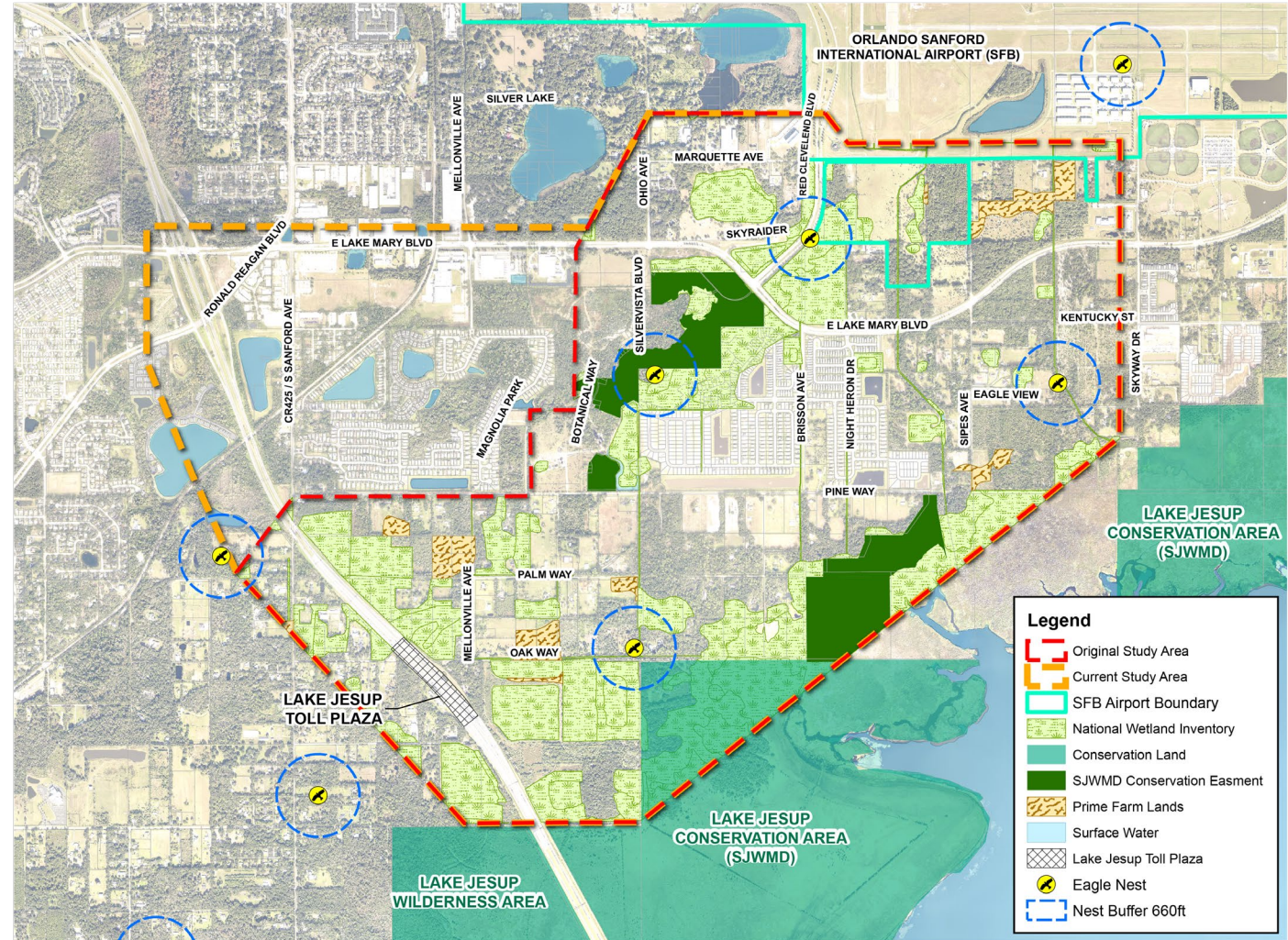
Natural Constraints

Forested, herbaceous, and lake systems within the project area

- Lake Jesup Basin
- Several conservation easements
- Lake Jesup Conservation Area
- Wetlands and surface waters

USFWS Consultation Areas

- Caracara, scrub-jay, snail kite, manatee
- Several bald eagle nests
- Wood stork Core Foraging Areas



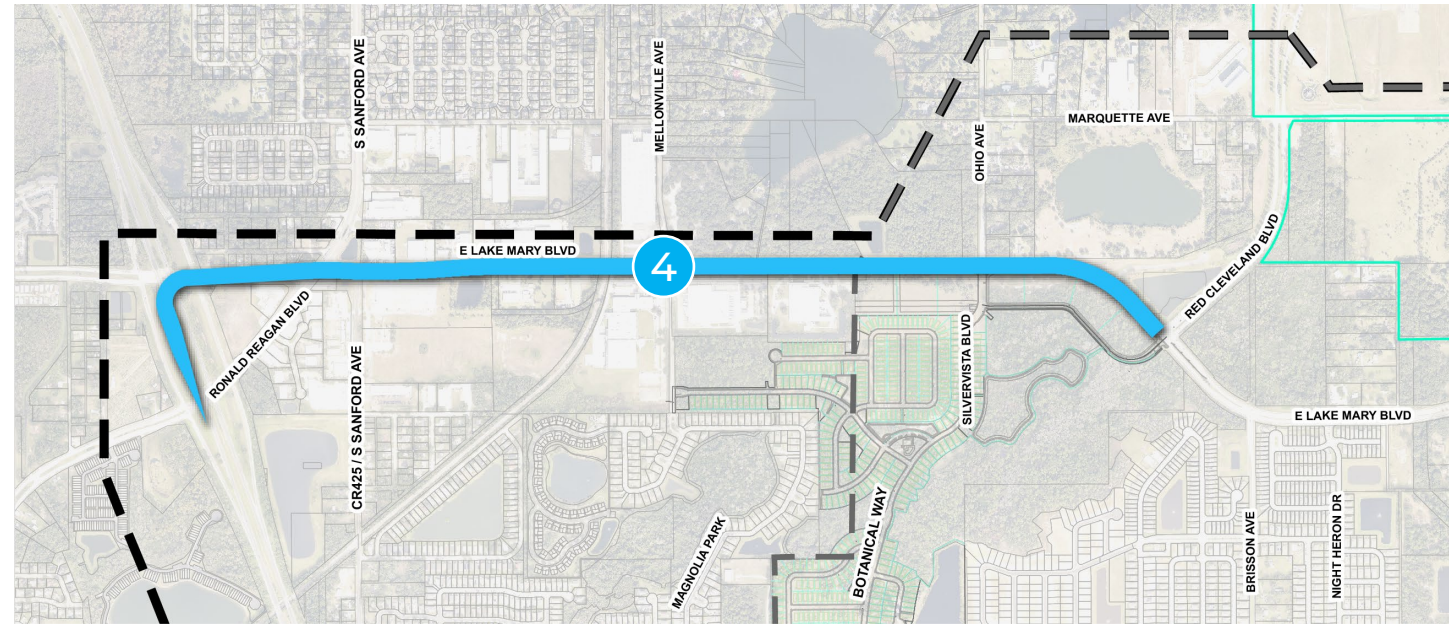
Initial Alternatives From CF&M Study

- Study to evaluate a new expressway connection from SR 417 to the Orlando Sanford International Airport
- Alternative 1 attempts to minimize direct impacts to residential development
- Alternative 2 has the least potential environmental impacts
- Alternatives 3a and 3d attempt to balance direct impacts to residential development and environmentally sensitive land



Additional Alternative

- At the request of the ESC, a new alternative will be evaluated that involves an elevated roadway (viaduct) along East Lake Mary Boulevard
- A determination on whether this concept meets the purpose and need for the project
- Costs and impacts will be determined so this alternative can be compared to the previously identified alternatives



Agency & Stakeholder Input

- Related Projects
- Planned Developments (Seminole County and City of Sanford)
- SJRWMD Conservation Easements and Criteria
- Alternatives and Engineering Considerations
- Environmental Effects
- Mobility Alternatives



SR 417 - Sanford Airport Connector PD&E Study Schedule

SR 417 Sanford Airport Connector PD&E Study Schedule (Subject to Change)

	2024			2025		
	Q2	Q3	Q4	Q1	Q2	Q3
Notice to Proceed	★					
ESC Project Kickoff Meeting	★					
Data Collection						
EAG, PAG, CEG & ESC Meetings		★				
Alternatives Evaluation						
Public Kickoff Meeting		★				
Draft PD&E Study Reports						
EAG, PAG, CEG, & ESC Meetings				★		
Alternatives Public Workshop				★		
Refine Alternatives						
EAG, PAG, CEG, & ESC Closeout Meetings					★	
Public Hearing					★	
Finalize PD&E Study Reports						
CFX Review/Study Complete						★



CENTRAL
FLORIDA
EXPRESSWAY
AUTHORITY

THANK YOU