



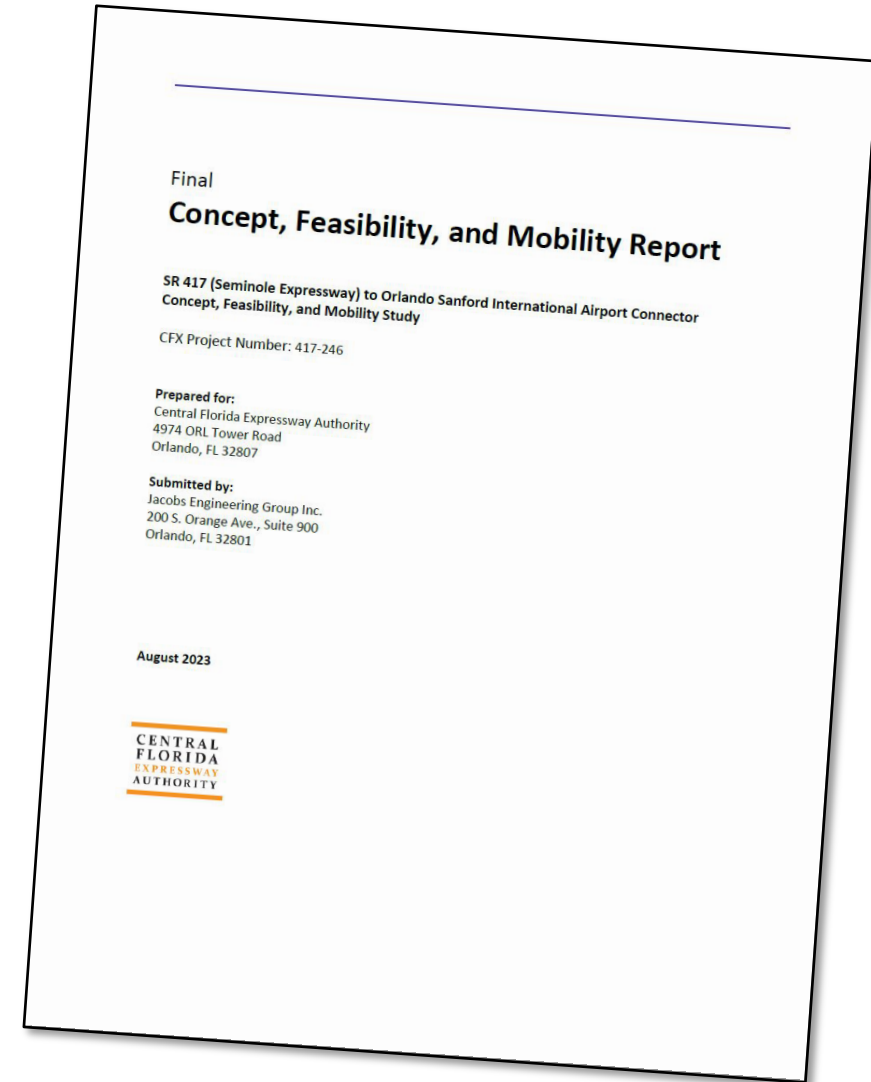
**SR 417 Sanford Airport Connector
Project Development & Environment (PD&E) Study**
Environmental Stewardship Committee

Will Hawthorne, PE, CFX Director of Transportation Planning and Policy

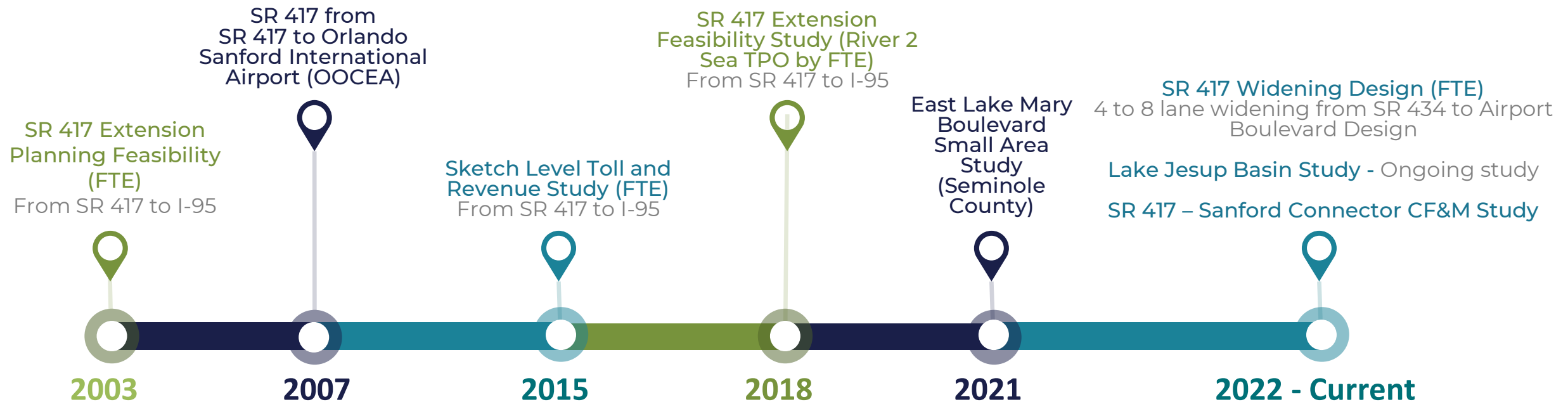
— May 30, 2024 —

Project Background

- In 2023, CFX completed CF&M Study to evaluate a new direct expressway connection between SR 417 and the Orlando Sanford International Airport
- Four alternatives evaluated
- CFX Board approved CF&M Study and authorized a more detailed PD&E Study to further evaluate the alternatives
- At the request of the Environmental Stewardship Committee, the PD&E Study will also evaluate an elevated viaduct alternative along East Lake Mary Boulevard

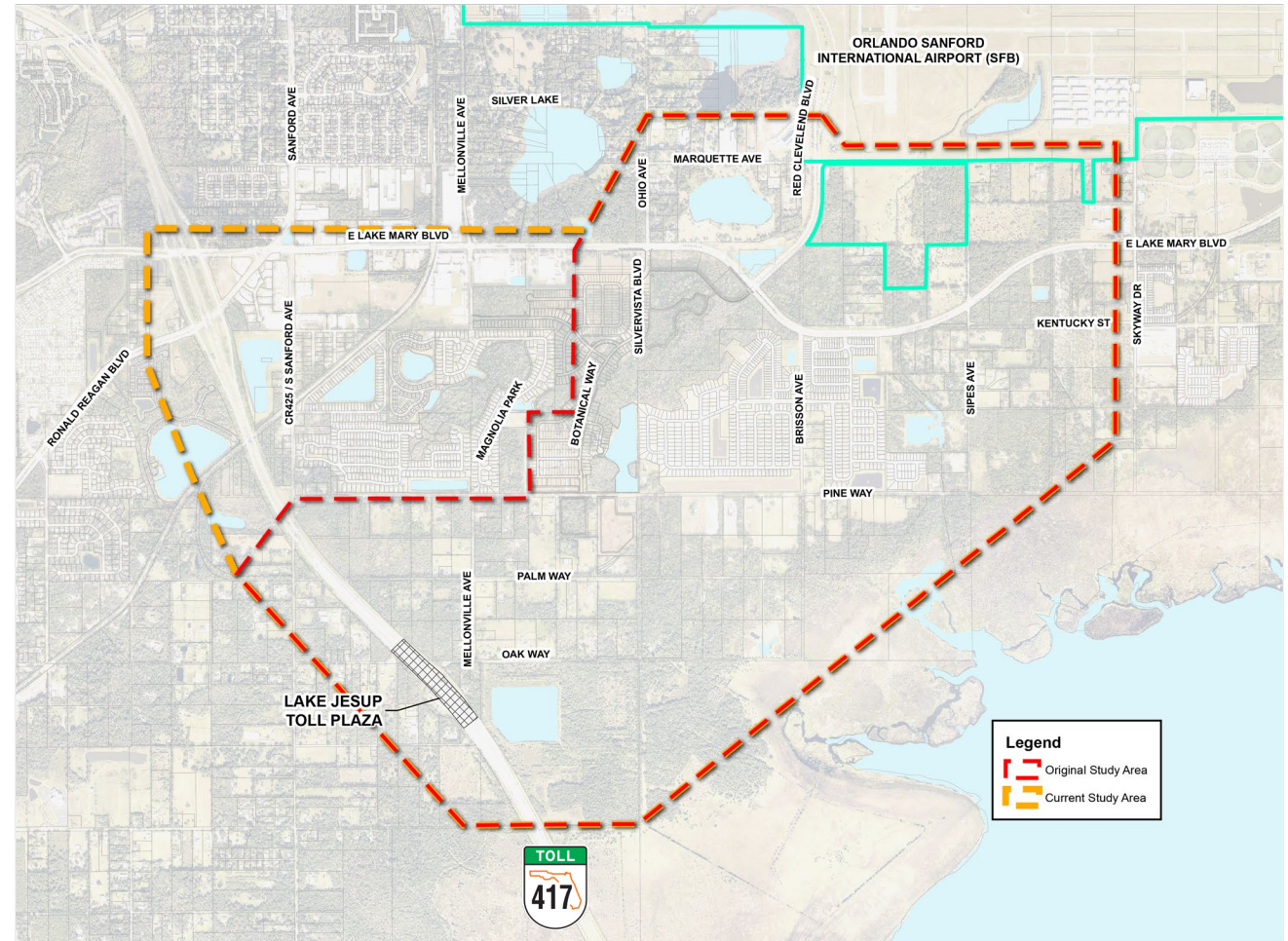


Project History



SR 417 - Sanford Airport Connector Study Area

- Original CF&M study area included the area between SR 417 and the Orlando Sanford International Airport
- Study area for PD&E Study has been expanded to include East Lake Mary Boulevard between SR 417 and the Orlando Sanford International Airport



Purpose and Need

Orlando Sanford International Airport

- Strategic Intermodal System Strategic Growth Commercial Service Airport
- 91% increase in enplanements through 2037
- 400% increase in air freight tonnage through 2037

Population Growth

- Seminole County - 11.4% growth from 2010 to 2020
- Projected to increase another 21% by 2050

Planned Development

- Numerous new residential developments
- Additional residential and commercial development planned

East Lake Mary Boulevard provides access to Orlando Sanford International Airport

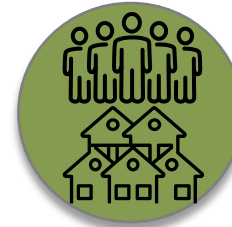
- Long delays at the SR 417 interchange
- Roadway and intersections nearing capacity



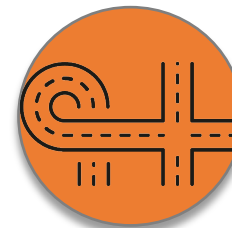
Enhances Regional Connectivity and Mobility



Addresses Anticipated Future Traffic Needs



Supports Socioeconomic Growth and Planned Development



Improves Modal Connectivity

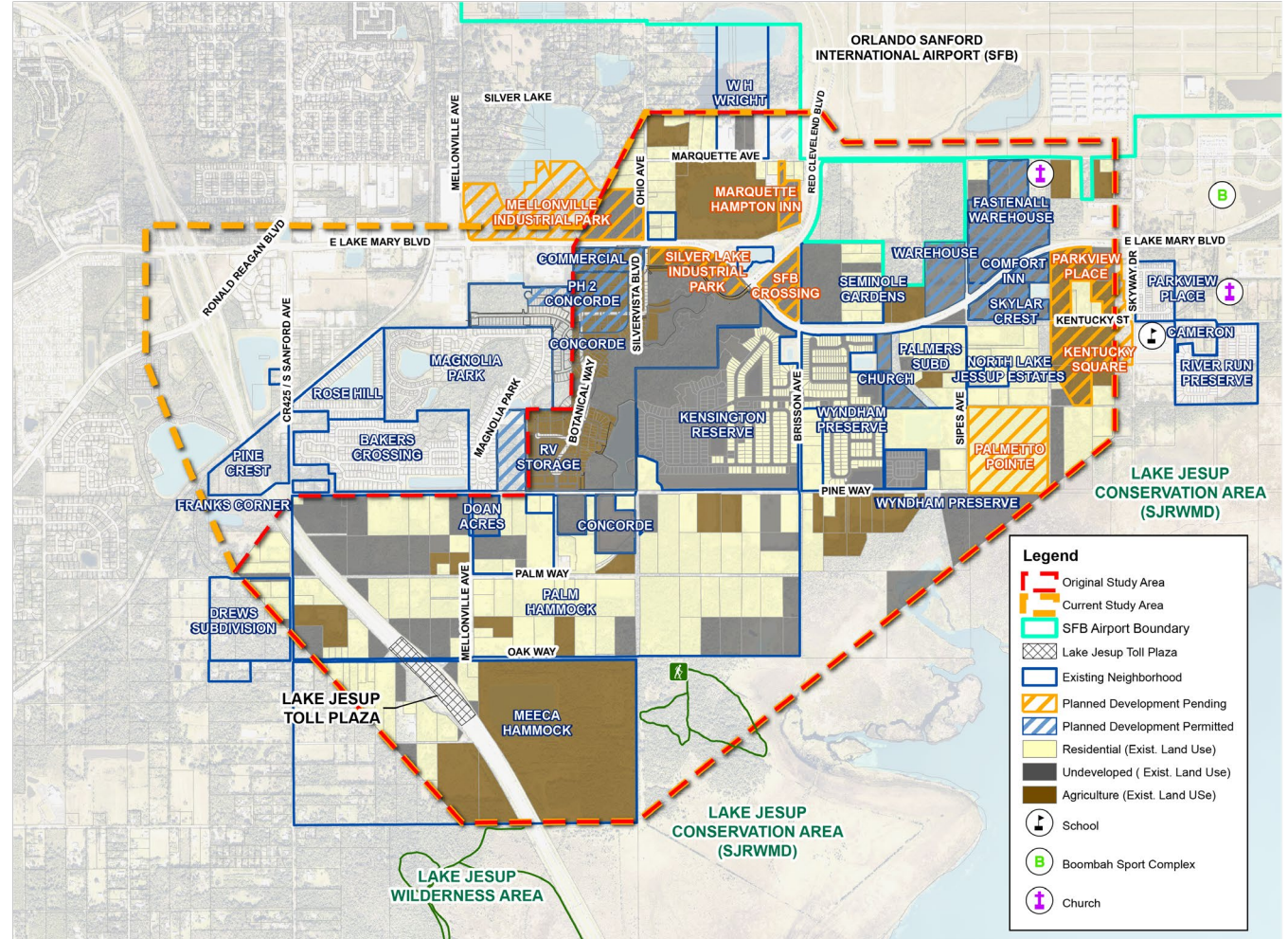
Sociocultural Constraints

Land Use

- Numerous existing residential neighborhoods
- Planned residential and commercial development
- Agricultural and conservation lands

Community Resources

- Churches
- Boombah Sports Complex
- Schools



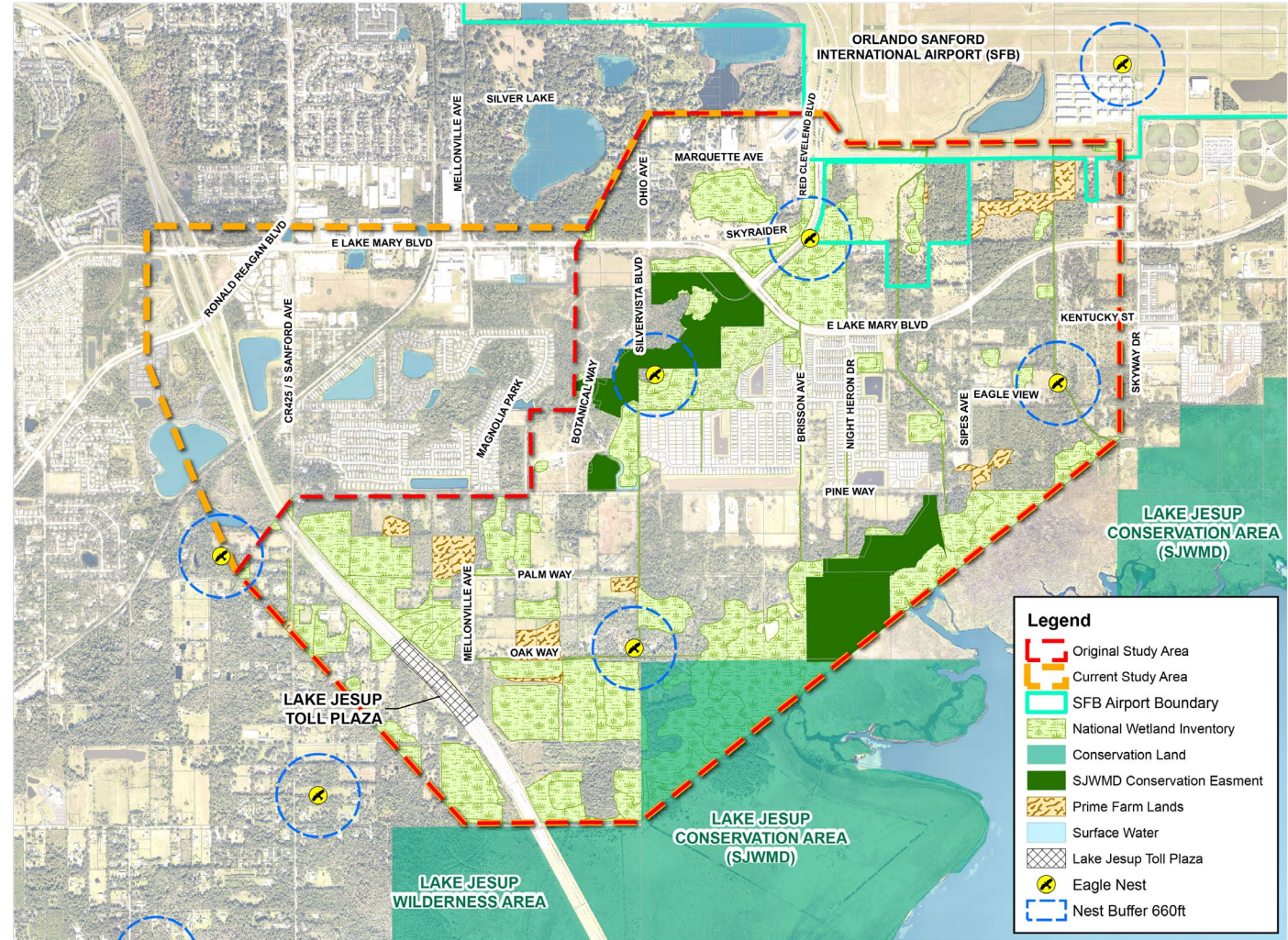
Natural Constraints

Forested, herbaceous, and lake systems within the project area

- Lake Jesup Basin
- Several conservation easements
- Lake Jesup Conservation Area
- Wetlands and surface waters

USFWS Consultation Areas

- Caracara, scrub-jay, snail kite, manatee
- Several bald eagle nests
- Wood stork Core Foraging Areas



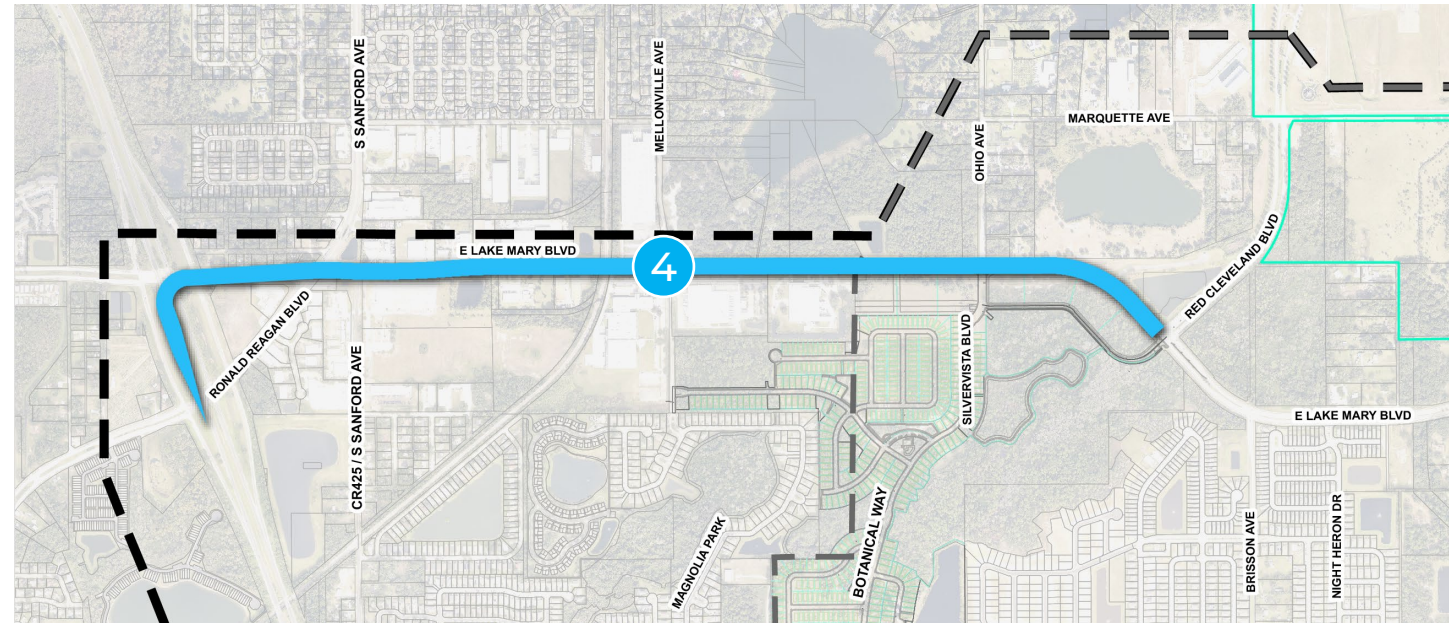
Initial Alternatives From CF&M Study

- Study to evaluate a new expressway connection from SR 417 to the Orlando Sanford International Airport
- Alternative 1 attempts to minimize direct impacts to residential development
- Alternative 2 has the least potential environmental impacts
- Alternatives 3a and 3d attempt to balance direct impacts to residential development and environmentally sensitive land



Additional Alternative

- At the request of the ESC, a new alternative will be evaluated that involves an elevated roadway (viaduct) along East Lake Mary Boulevard
- A determination on whether this concept meets the purpose and need for the project
- Costs and impacts will be determined so this alternative can be compared to the previously identified alternatives



Agency & Stakeholder Input

- Related Projects
- Planned Developments (Seminole County and City of Sanford)
- SJRWMD Conservation Easements and Criteria
- Alternatives and Engineering Considerations
- Environmental Effects
- Mobility Alternatives



SR 417 - Sanford Airport Connector PD&E Study Schedule

SR 417 Sanford Airport Connector PD&E Study Schedule (Subject to Change)

	2024			2025		
	Q2	Q3	Q4	Q1	Q2	Q3
Notice to Proceed	★					
ESC Project Kickoff Meeting	★					
Data Collection						
EAG, PAG, CEG & ESC Meetings		★				
Alternatives Evaluation						
Public Kickoff Meeting		★				
Draft PD&E Study Reports						
EAG, PAG, CEG, & ESC Meetings				★		
Alternatives Public Workshop				★		
Refine Alternatives						
EAG, PAG, CEG, & ESC Closeout Meetings					★	
Public Hearing					★	
Finalize PD&E Study Reports						
CFX Review/Study Complete						★



CENTRAL
FLORIDA
EXPRESSWAY
AUTHORITY

THANK YOU