

# POINCIANA PARKWAY EXTENSION: SEGMENTS 1 & 2

## RONALD REAGAN PARKWAY TO COUNTY ROAD 532

CENTRAL  
FLORIDA  
EXPRESSWAY  
AUTHORITY



[www.CFXway.com](http://www.CFXway.com) 407-885-4743 [Construction@CFXway.com](mailto:Construction@CFXway.com) @DriveEPASS

SUMMER 2024

## PROJECT DESCRIPTION

The Central Florida Expressway Authority is designing the extension of State Road 538/ Poinciana Parkway. The extension is being designed in two segments. Segment 1, from Ronald Reagan Parkway to south of US 17/92 and Segment 2, from south of US 17/92 to County Road 532 are expected to improve traffic flow and operations in the area.

The 3.1-mile project extends the Poinciana Parkway from Ronald Reagan Parkway to CR 532 and includes nearly a half mile of bridging over wetlands within the Reedy Creek Mitigation Bank. Design also includes an interchange at US 17/92, tolled ramps at CR 532, and bridges over the CSX railroad, Old Tampa Highway, and US 17/92. A noise analysis has been performed as part of this project.

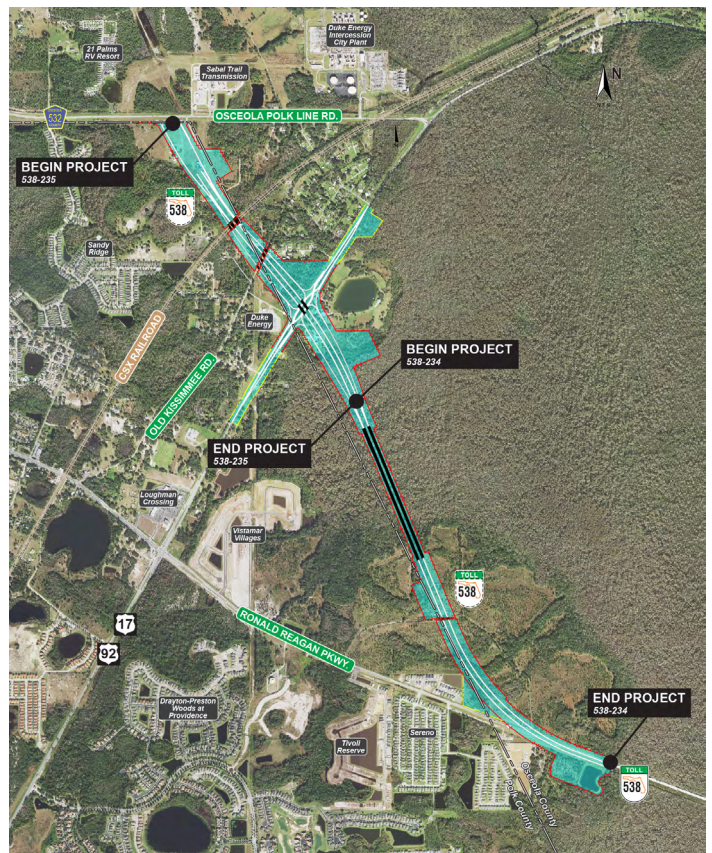
## ABOUT PUBLIC INVOLVEMENT

CFX held a public information meeting on January 17, 2023, and anticipates a pre-construction meeting prior to the start of construction (which is currently scheduled to begin in late 2027).

## QUICK FACTS

- **Design Timeline:** July 2020 - 2027
- **Estimated Design Cost:** \$11.1 Million

## DESIGN MAP (LARGER MAP ON BACK)



The regional Central Florida Expressway Authority is responsible for the planning, design, construction, operation and maintenance of a 125-mile limited-access expressway system to serve the five-county region. CFX's system includes SR 408 (Spessard L. Holland East-West Expressway), SR 528 (Martin Andersen Beachline Expressway), SR 417 (Central Florida GreeneWay), SR 429 (Daniel Webster Western Beltway), SR 414 (John Land Apopka Expressway), SR 429 (Wekiva Parkway), SR 538 (Poinciana Parkway), State Road 453 and State Road 451.

Central Florida Expressway Authority: 4974 ORL Tower Road, Orlando, FL 32807 | Phone: 407.690.5000 | Fax: 407.690.5011 | Email: [construction@cfxway.com](mailto:construction@cfxway.com)



# POINCIANA PARKWAY EXTENSION: SEGMENTS 1 & 2

## RONALD REAGAN PARKWAY TO COUNTY ROAD 532

CENTRAL  
FLORIDA  
EXPRESSWAY  
AUTHORITY

### ★ DESIGN GOALS

- Improve connectivity opportunities for Osceola and Polk counties.
- Meet anticipated transportation demand for planned growth.
- Provide evacuation and emergency services access for emergency events such as hurricanes.

### 📍 DESIGN MAP

