



# **SR 417 Sanford Airport Connector Project Development & Environment (PD&E) Study**

**Project Advisory Group**

Nick Lulli, Quest  
David Dangel, PE, Ardurra

**— August 20, 2024 —**



**CENTRAL  
FLORIDA  
EXPRESSWAY  
AUTHORITY**

TO RAISE YOUR HAND  
TO SPEAK

**SR 417 Sanford Airport Connector  
Project Development & Environment (PD&E) Study**  
Project Advisory Group  
Nick Lulli, Quest  
David Dangel, PE, Ardurra  
— **August 20, 2024** —





03:45

LIVE | 1



Chat



Q&amp;A



People



Raise



React



View



More



Camera



Mic



Share

Leave

Your mic has been enabled

Unmute if you'd like to speak.



TO MUTE  
OR  
UNMUTE YOURSELF

CENTRAL  
FLORIDA  
EXPRESSWAY  
AUTHORITY

**SR 417 Sanford Airport Connector  
Project Development & Environment (PD&E) Study**  
Project Advisory Group

Nick Lulli, Quest  
David Dangel, PE, Ardurra  
— August 20, 2024 —



CENTRAL  
FLORIDA  
EXPRESSWAY  
AUTHORITY

Meeting now

01:45

LIVE | 1

Chat

Q&A

People 2

Raise

React

View

More

Camera

Mic

Share

Leave

Your mic has been disabled

You can no longer unmute.

CENTRAL  
FLORIDA  
EXPRESSWAY  
AUTHORITY

SR 417 Sanford Airport Connector

Project Development & Environment (PD&E) Study

Project Advisory Group

Nick Lulli, Quest

David Dangel, PE, Ardurra

— August 20, 2024 —

UU

Q&A

Collapse

Have you selected an alignment yet?

**B**

*I*

Ask

USE THE Q&A  
BOX TO ASK ANY  
QUESTIONS

Start the discussion by asking a

Ask a question

CENTRAL  
FLORIDA  
EXPRESSWAY  
AUTHORITY

4



CENTRAL  
FLORIDA  
EXPRESSWAY  
AUTHORITY

**SR 417 Sanford Airport Connector  
Project Development & Environment (PD&E) Study**  
Project Advisory Group  
Nick Lulli, Quest  
David Dangel, PE, Ardurra  
— **August 20, 2024** —

NOTE THE  
SLIDE NUMBER





00:03



Chat



Q&A



People



Raise



View



More



Camera



Mic



Share



Leave



# SR 417 Sanford Airport Connector Project Development & Environment (PD&E) Study

Project Advisory Group

Nick Lulli, Quest  
David Dangel, PE, Ardurra

— August 20, 2024 —



# Title VI Compliance

This meeting, project, or study is being conducted without regard to race, color, national origin, age, sex, religion, disability or family status. Persons wishing to express their concerns relative to compliance by the Central Florida Expressway Authority (CFX) with Title VI may do so by contacting:

Nick Lulli

Public Involvement Coordinator

4974 ORL Tower Road Orlando, FL 32807

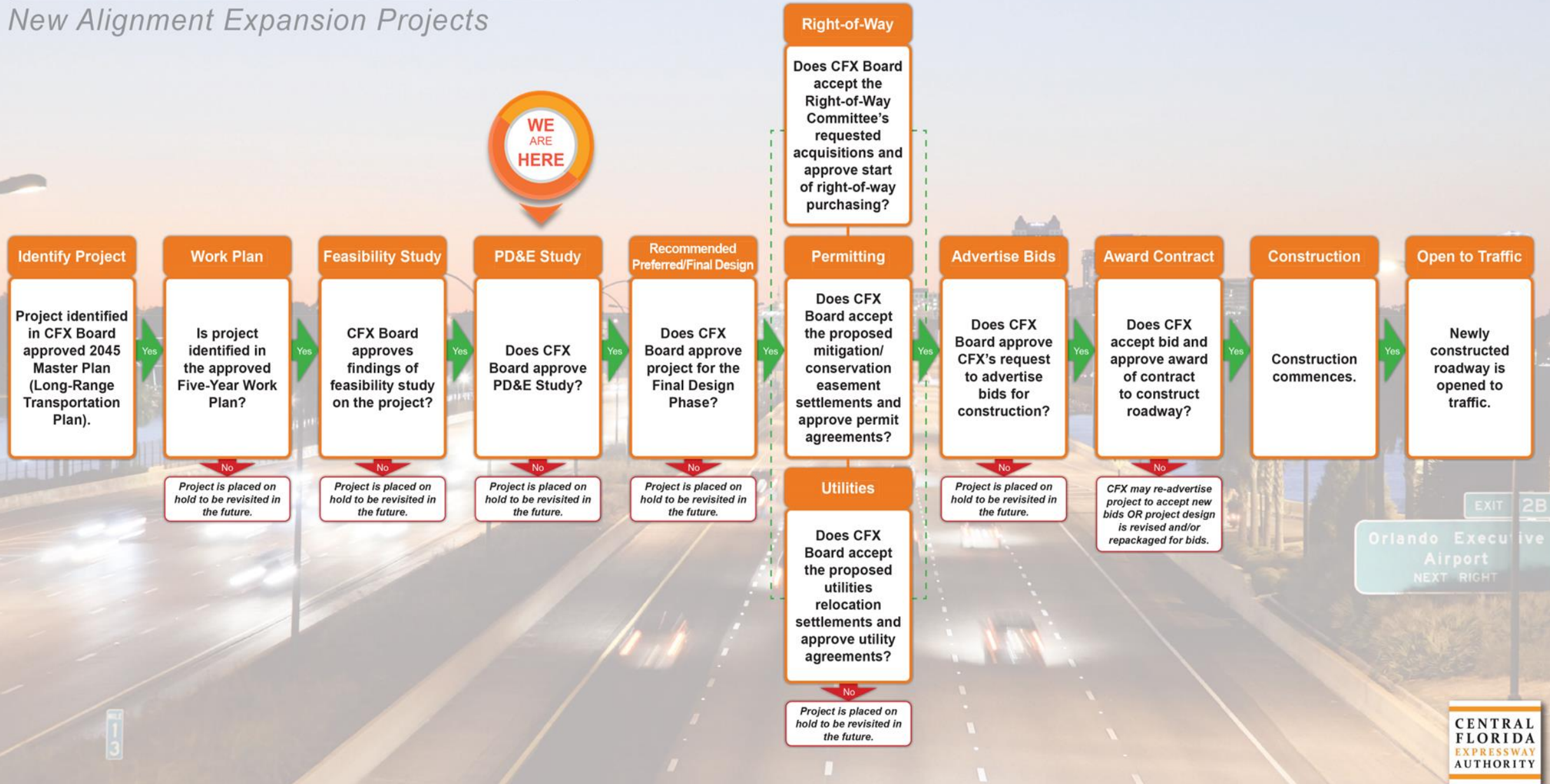
407-885-4743

[ProjectStudies@CFXway.com](mailto:ProjectStudies@CFXway.com)

All inquiries or complaints will be handled according to CFX procedure and in a prompt and courteous manner.

# PROJECT DEVELOPMENT PROCESS

## New Alignment Expansion Projects





# Advisory Group Roles

## Environmental (EAG)

- Comprised of members representing environmental/government agencies and community/advocacy groups
- Members are invited by CFX to join
- Natural environment analysis
- Special advisory resource
- Input on potential environmental impact of project alternatives
- Local knowledge, issues and concerns regarding environmental impacts

## Project (PAG)

- Comprised of members representing government/transportation planning agencies and other key stakeholders
- Members are invited by CFX to join
- Mobility analysis
- Special advisory resource
- Input on project alternatives
- Local knowledge, issues and concerns

# Advisory Group Roles

## Community Engagement (CEG)

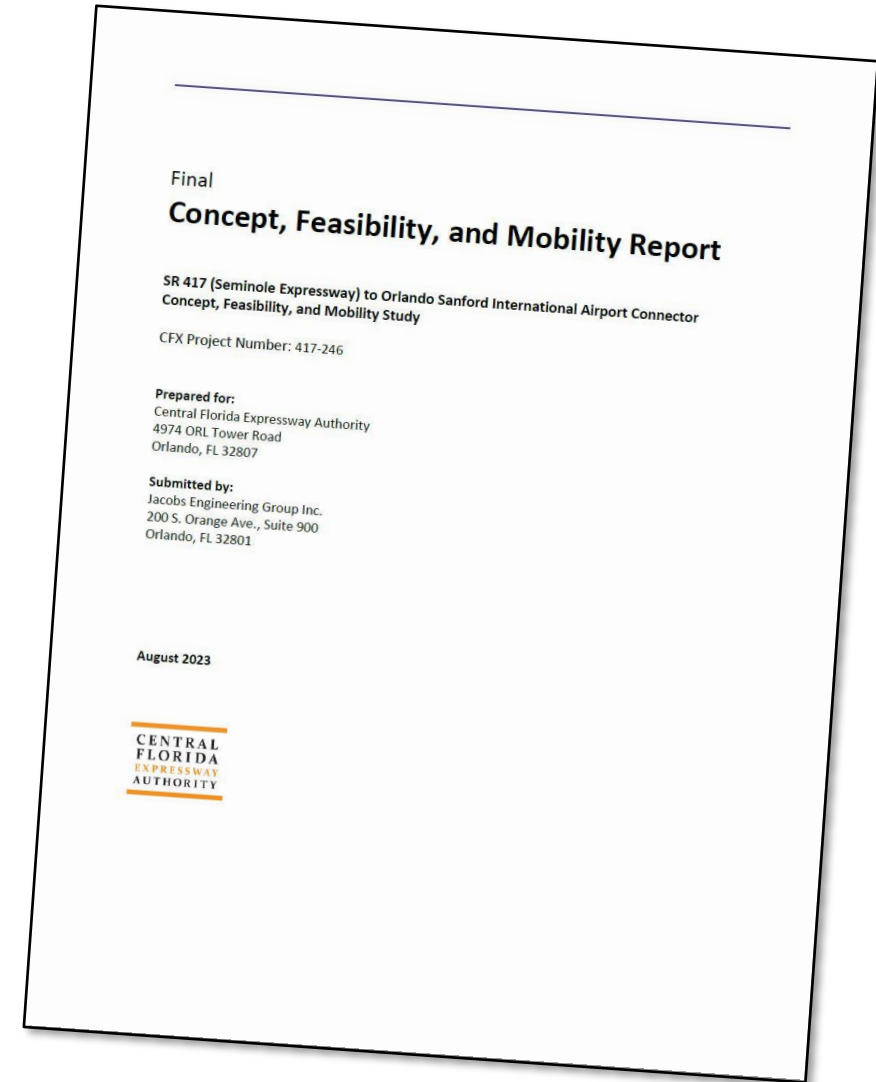
- Comprised of members representing area neighborhood homeowner associations and local businesses
- Members are invited by CFX to join
- Community and social analysis
- Special advisory resource
- Input on potential social impacts of project alternatives
- Local knowledge, issues and concerns regarding social impacts



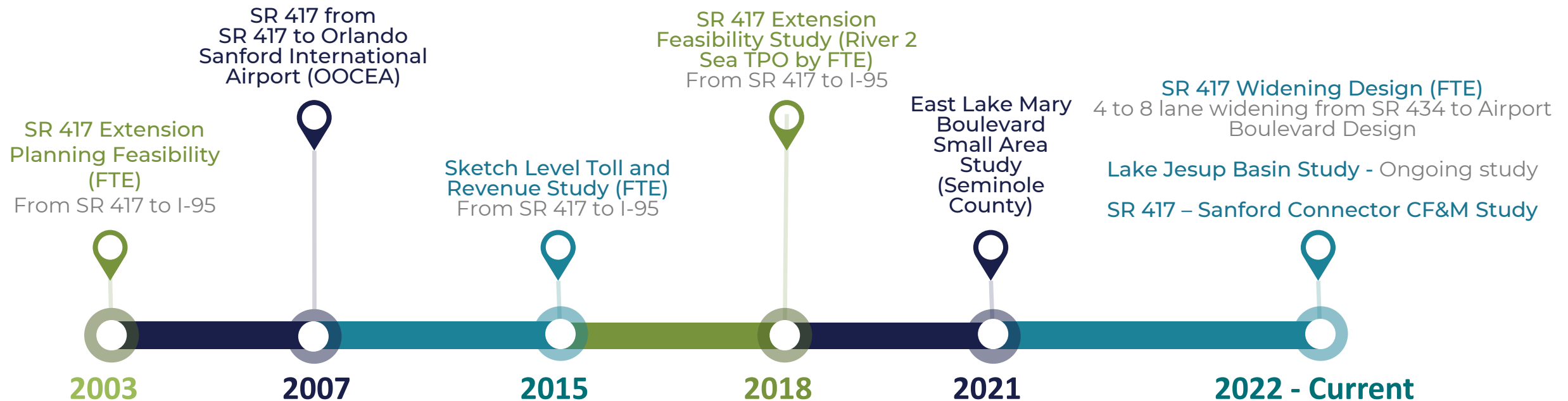


# Background

- In 2023, CFX completed CF&M Study to evaluate a new direct expressway connection between SR 417 and the Orlando Sanford International Airport
- Four alternatives were evaluated
- CFX Board approved CF&M Study and authorized a more detailed PD&E Study to further evaluate the alternatives
- At the request of the Environmental Stewardship Committee, the PD&E Study will also evaluate an elevated viaduct alternative along East Lake Mary Boulevard



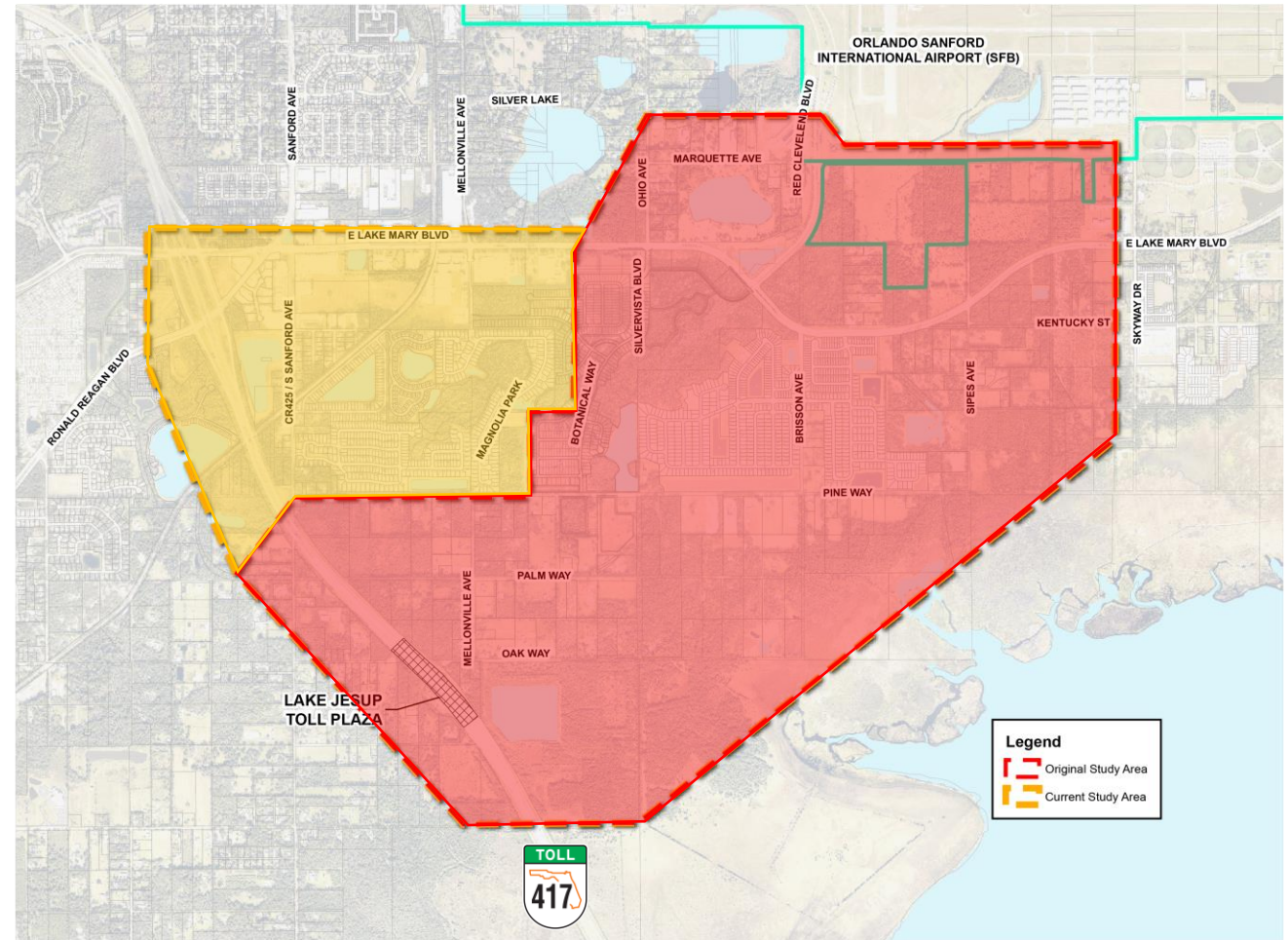
# Project History





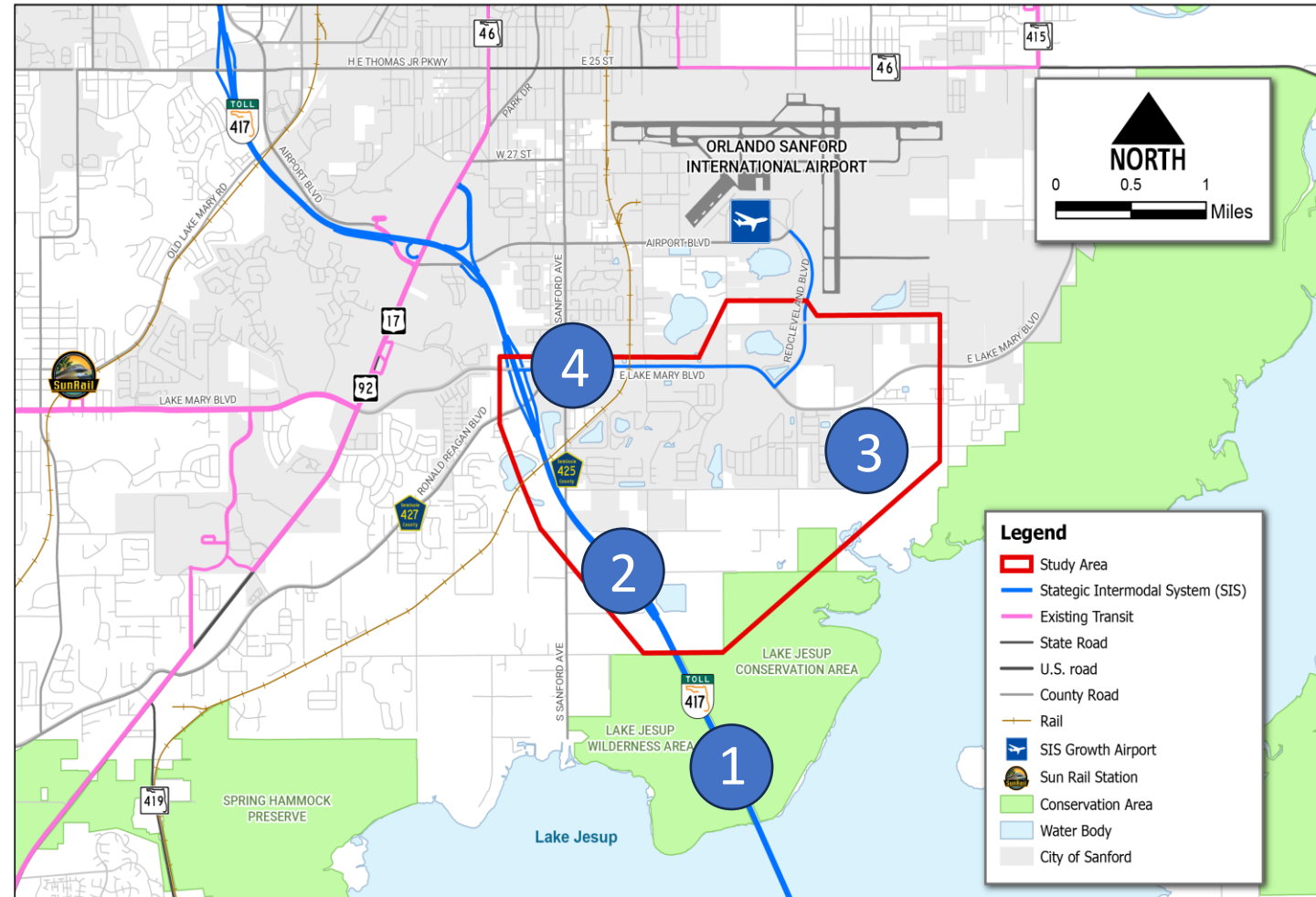
# Study Area

- CF&M Study Area included the area between SR 417 and the Orlando Sanford International Airport
- PD&E Study Area has been expanded to include East Lake Mary Boulevard between SR 417 and the Orlando Sanford International Airport



# Related Projects by Others

- 1 Widen SR 417 from 4 to 8 lanes from SR 434 to Airport Blvd.
- 2 All Electronic Tolling Conversion
- 3 Operational/Safety Improvements on Pine Way from Bloom Lane to Sipes Ave. and on Sipes Ave. from Pine Way to North of Eagle View Cove
- 4 Shared-use path on East Lake Mary Blvd. From US 17/92 to Red Cleaveland Blvd.





# Purpose and Need

## Orlando Sanford International Airport

- 91% increase in enplanements through 2037
- 400% increase in air freight tonnage through 2037

## Traffic Conditions (In No-Build Condition)

- Lake Mary Boulevard 44% increase
- Red Cleveland Boulevard (*Airport Entrance*) 69% increase

## Population Growth

- Seminole County - 11.4% growth from 2010 to 2020
- Projected to increase another 21% by 2050

## Planned Development

- Numerous new residential developments
- Additional residential and commercial development planned

## East Lake Mary Boulevard provides access to Orlando Sanford International Airport

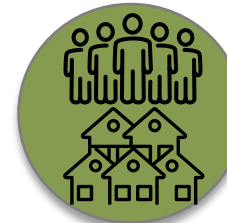
- Long delays at the SR 417 interchange
- Roadway and intersections nearing capacity



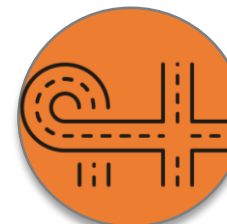
Enhances Airport Access, Local & Regional Connectivity, and Mobility



Addresses Anticipated Future Traffic Needs

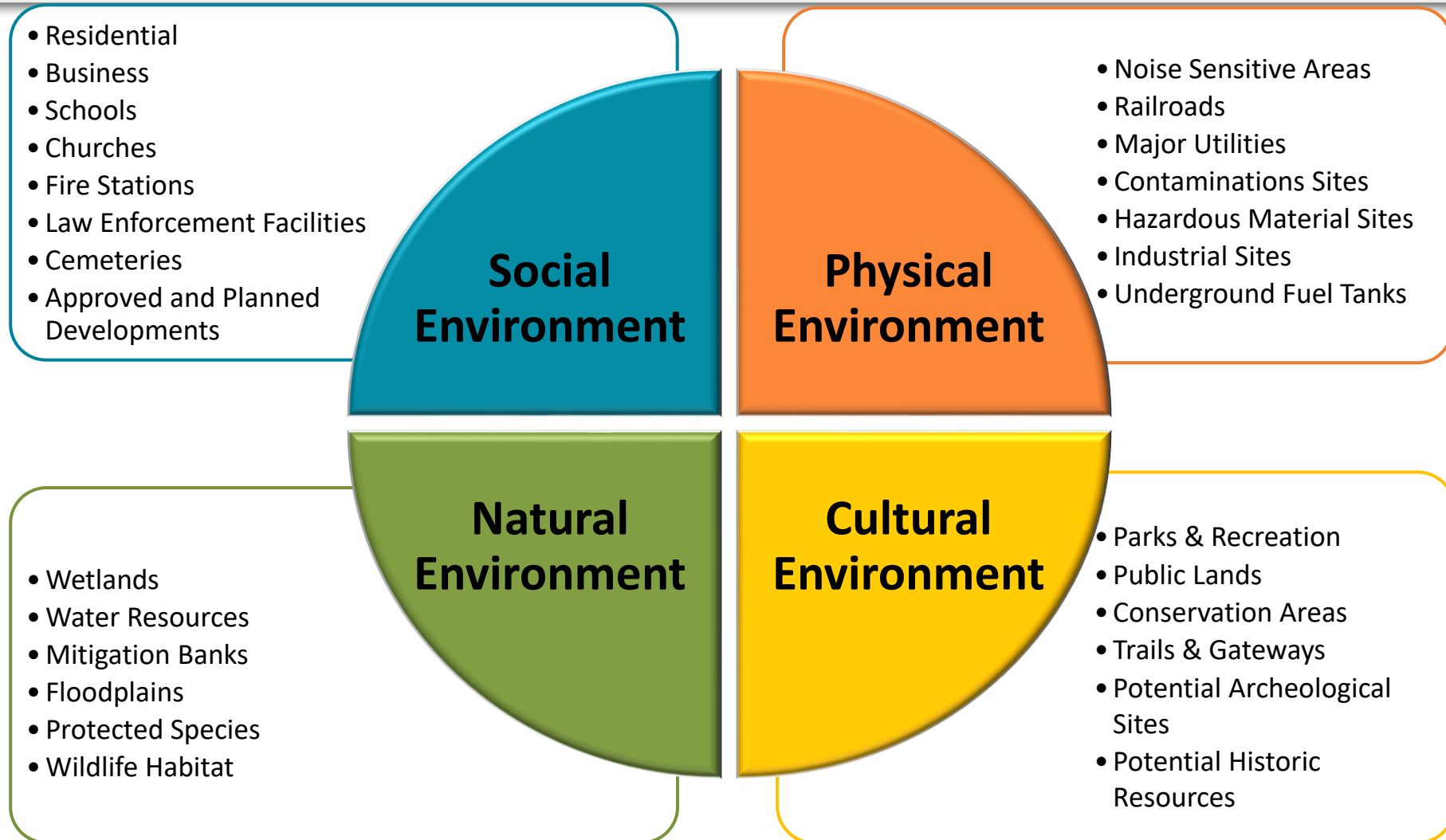


Supports Socioeconomic Growth and Planned Development



Improves Modal Connectivity

# PD&E Evaluation Criteria



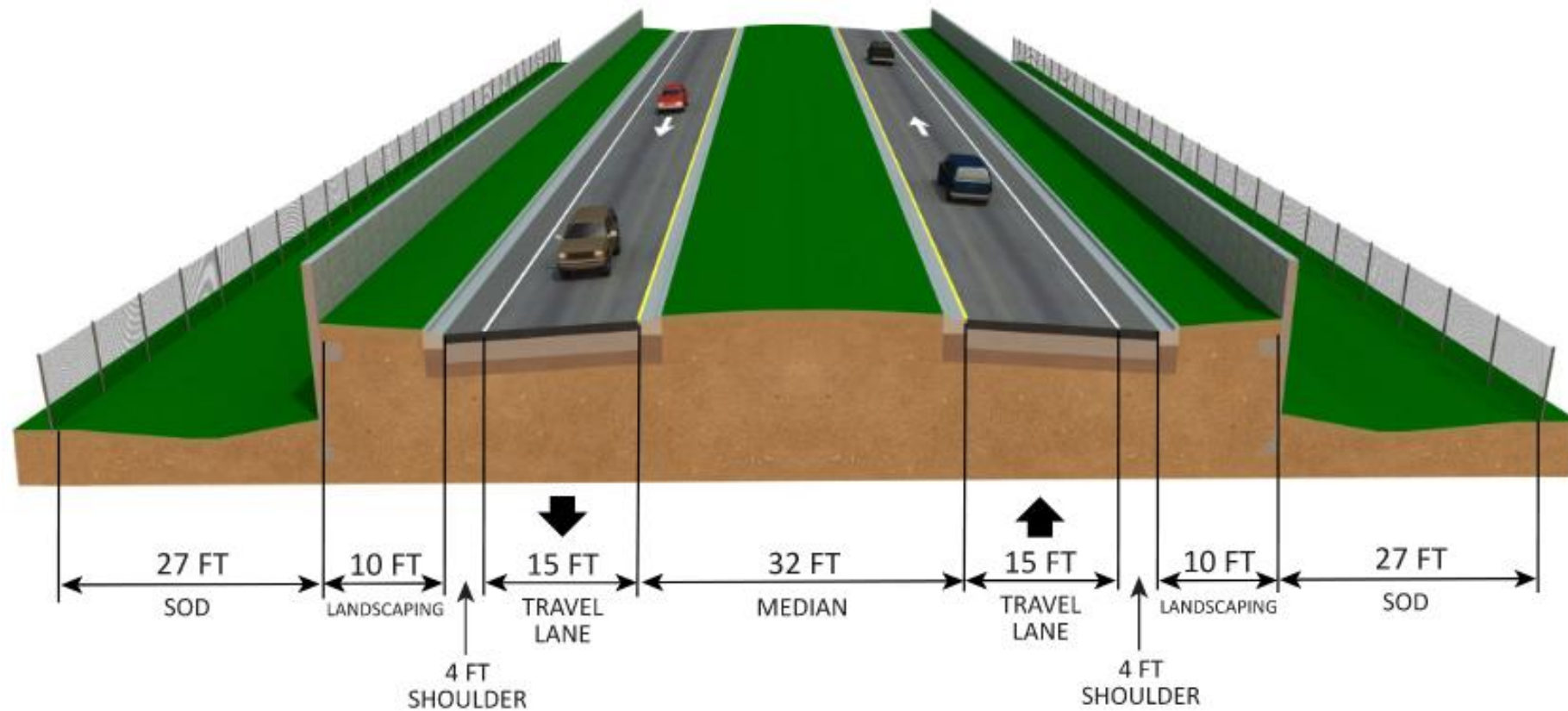
# Alternatives From CF&M Study

- Study to evaluate a new expressway connection from SR 417 to the Orlando Sanford International Airport
- Alternative 1 attempts to minimize direct impacts to residential development
- Alternative 2 has the least potential environmental impacts
- Alternatives 3a and 3d attempt to balance direct impacts to residential development and environmentally sensitive land



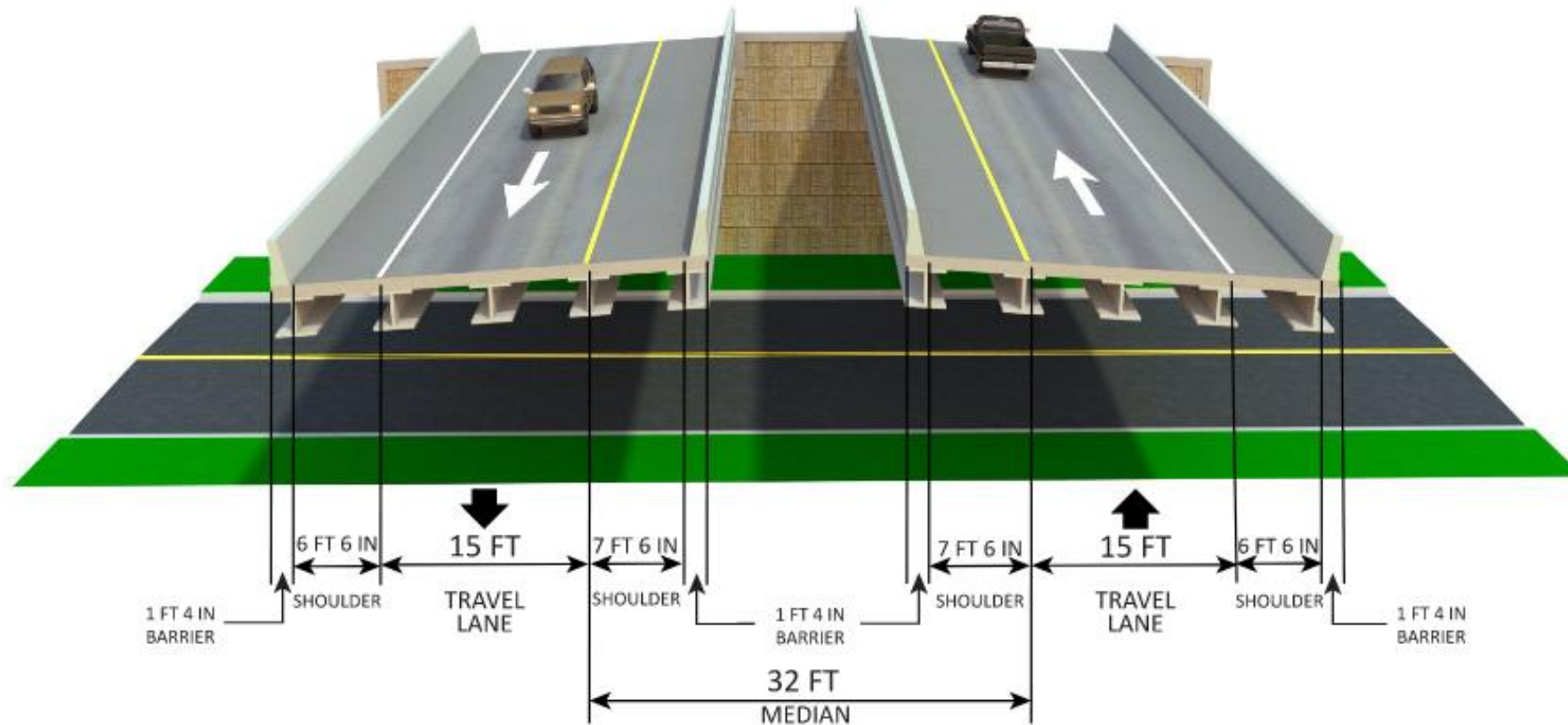


# Proposed Connector Typical Section



**Design Speed = 45 mph**  
**Approximate Right-of-Way = 150 Feet**

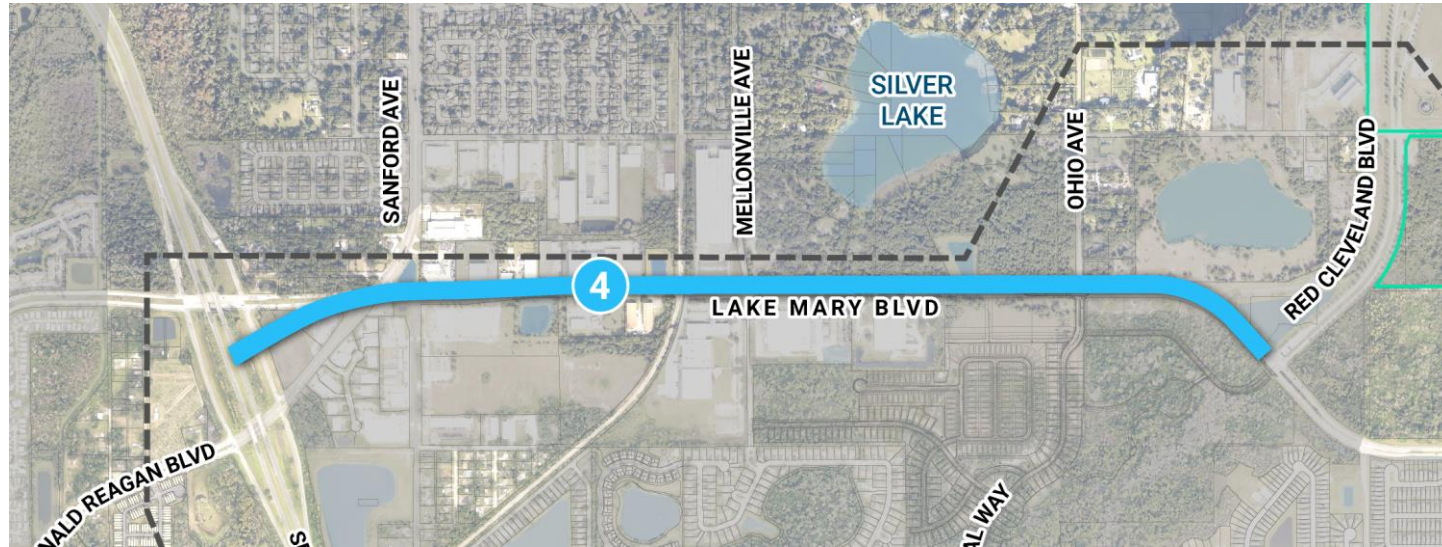
# Proposed Bridge Typical Section



**Design Speed = 45 mph**  
**Approximate Right-of-Way = 77 Feet & 8 Inches**  
**(Typical is for local road crossings under 500 feet in length)**

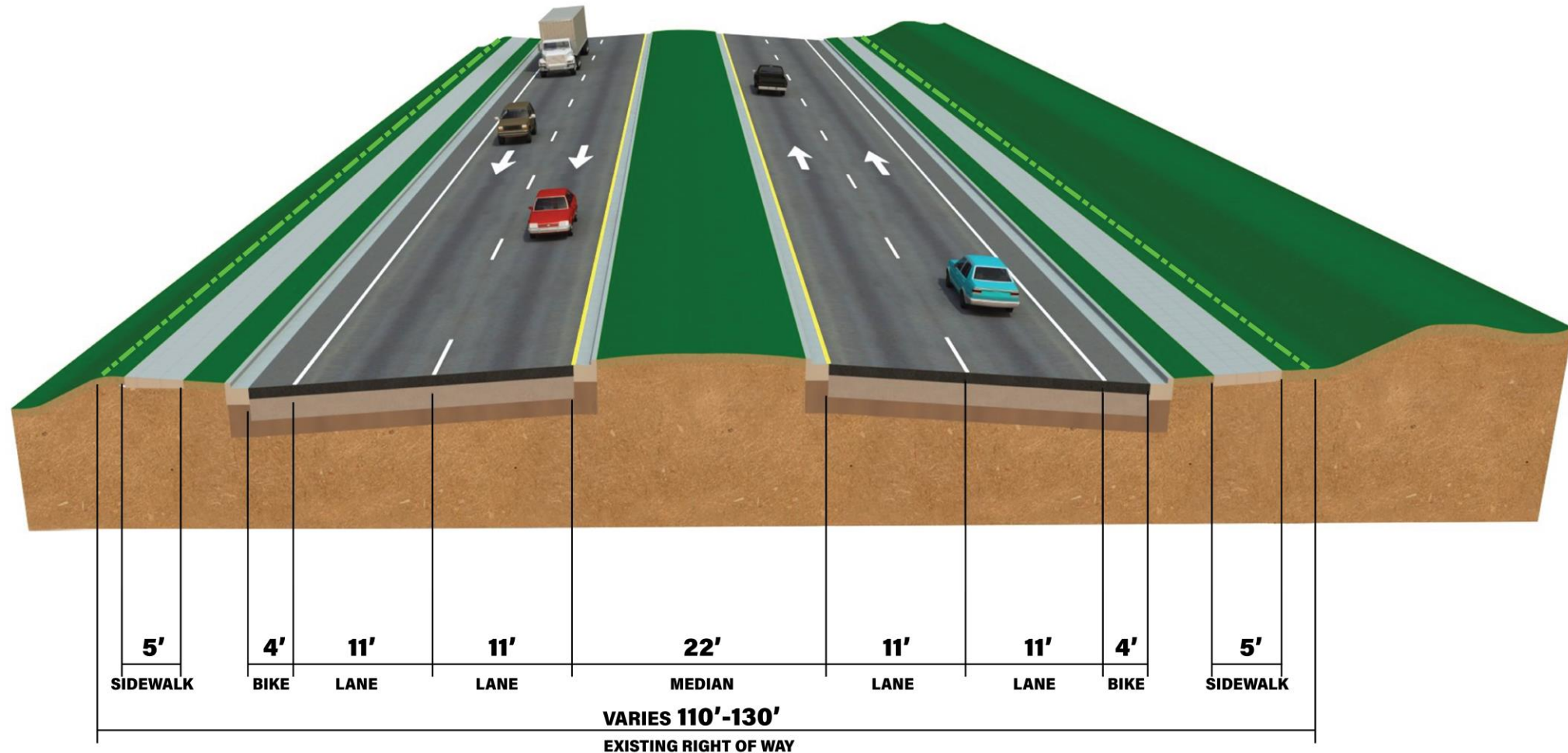
# Additional Alternative

- At the request of the ESC, a new alternative will be evaluated that involves an elevated roadway (viaduct) along East Lake Mary Boulevard
- An evaluation of whether this concept meets the purpose and need for the project will be made
- Costs and impacts will be determined so this alternative can be compared to the previously identified alternatives

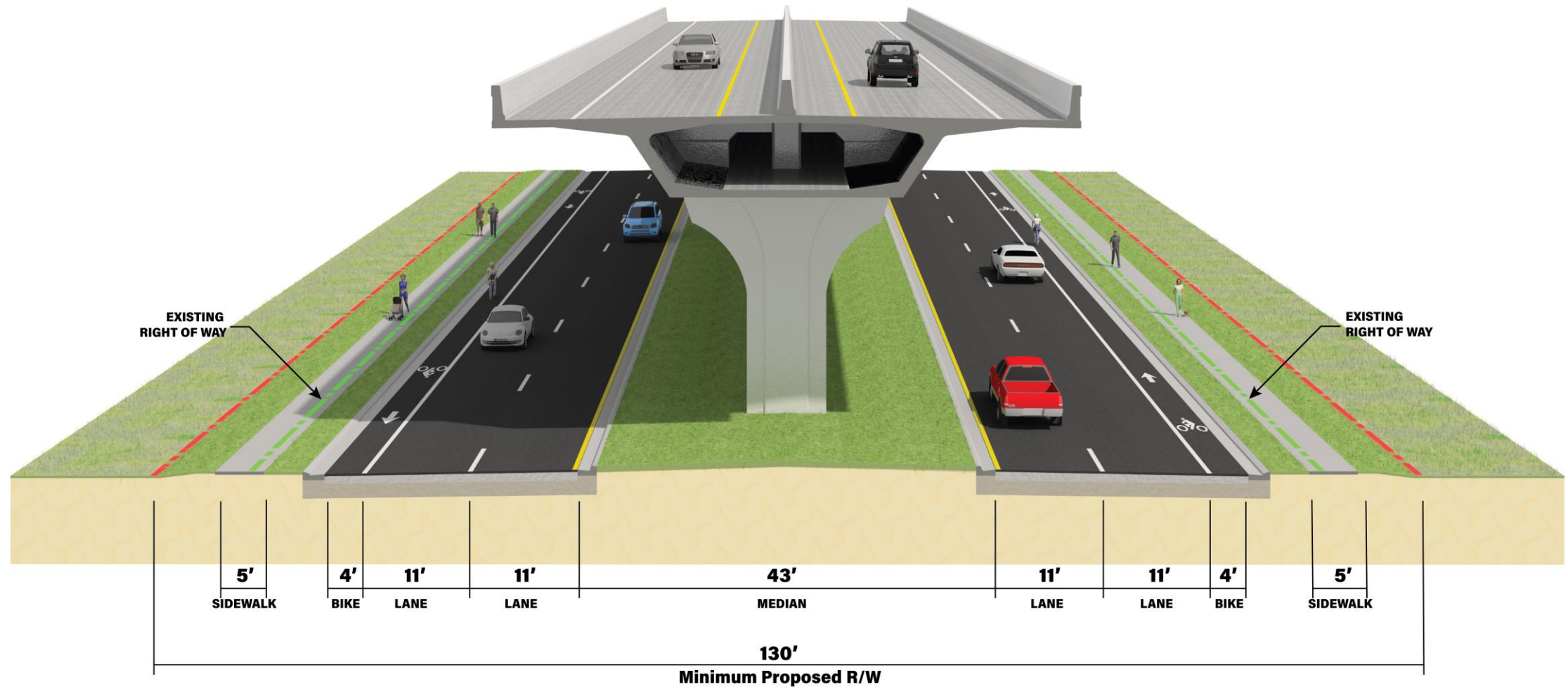




# East Lake Mary Blvd Existing Typical Section

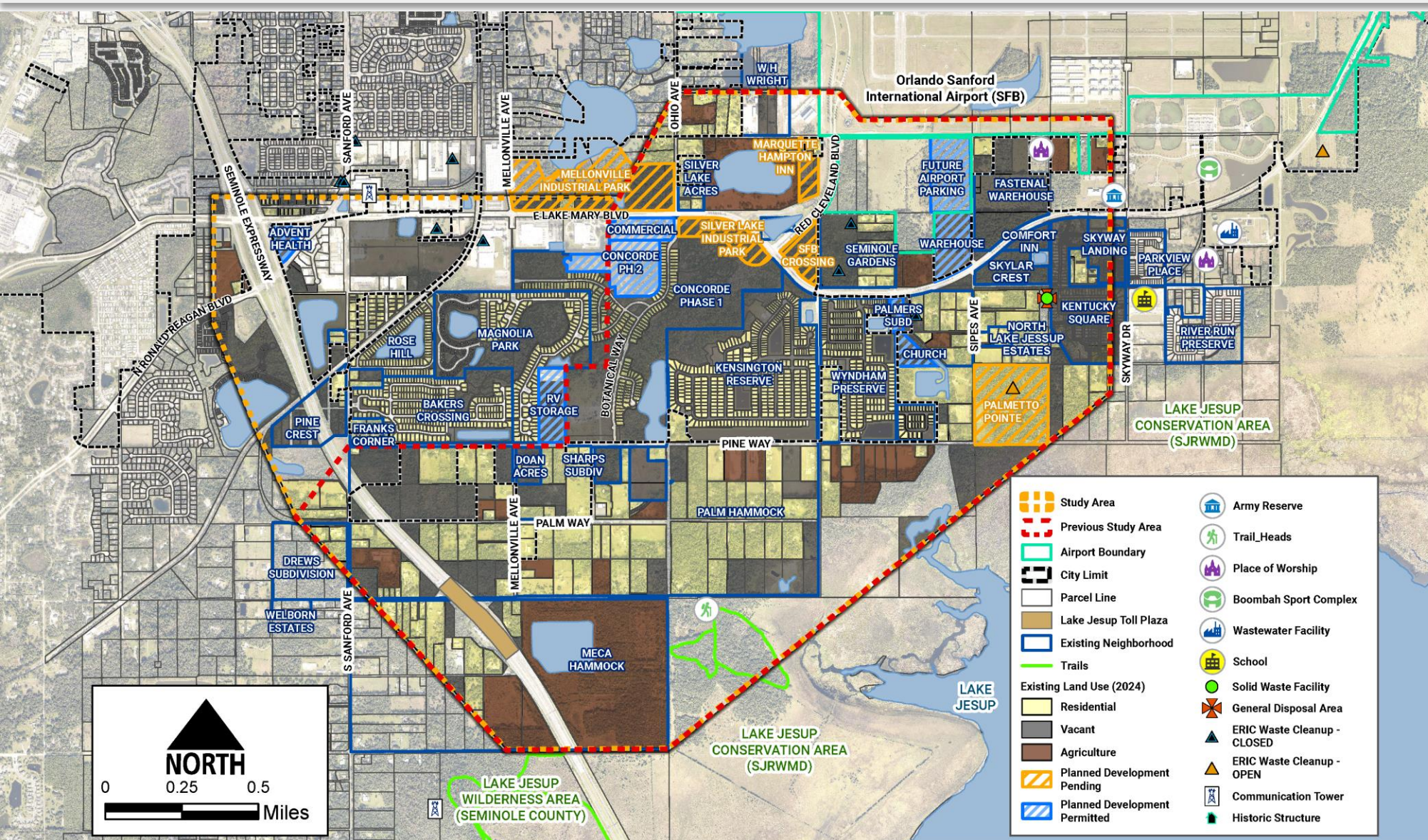


# Proposed Viaduct Typical Section





# Sociocultural Constraints



## Land Use

- Numerous existing residential neighborhoods
- Planned residential and commercial development
- Agricultural and conservation lands

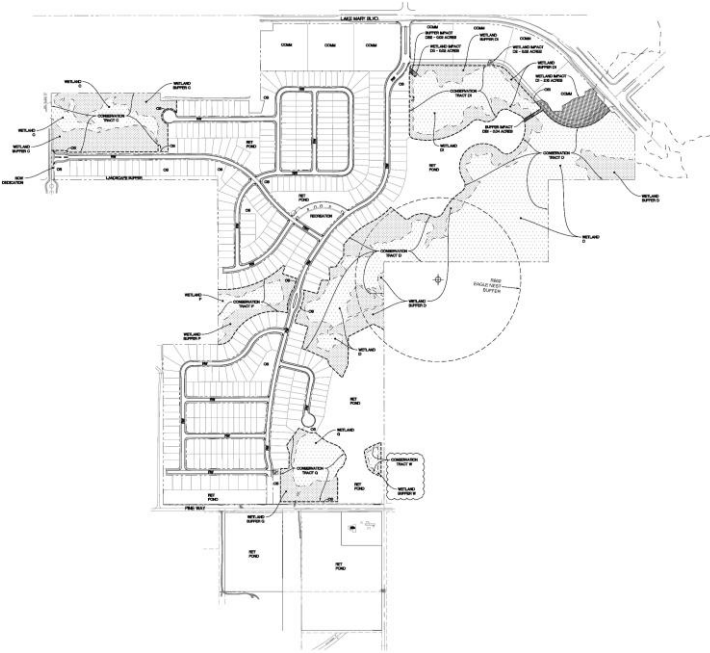
## Community Resources

- Churches
- Boombah Sports Complex
- Schools



# Future Land Use

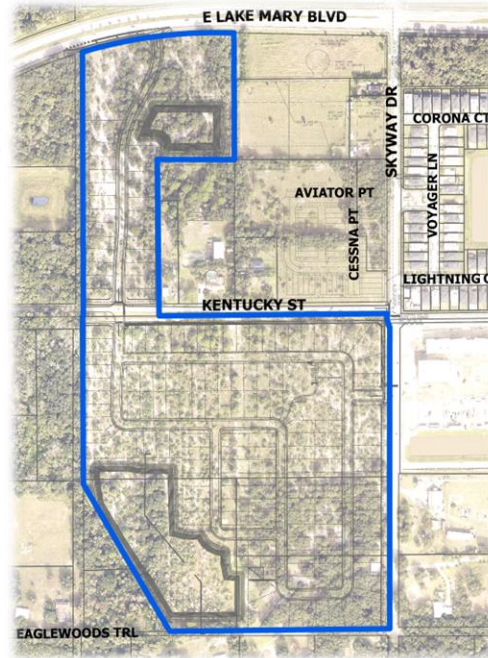
Concorde



## Concorde

- 232.46 acres
- 421 single-family lots

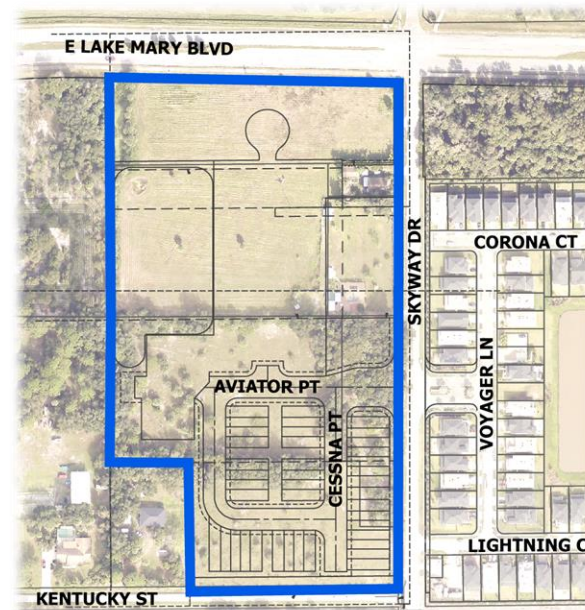
Kentucky Square



## Kentucky Square

- 49.36 acres
- 149 single-family lots

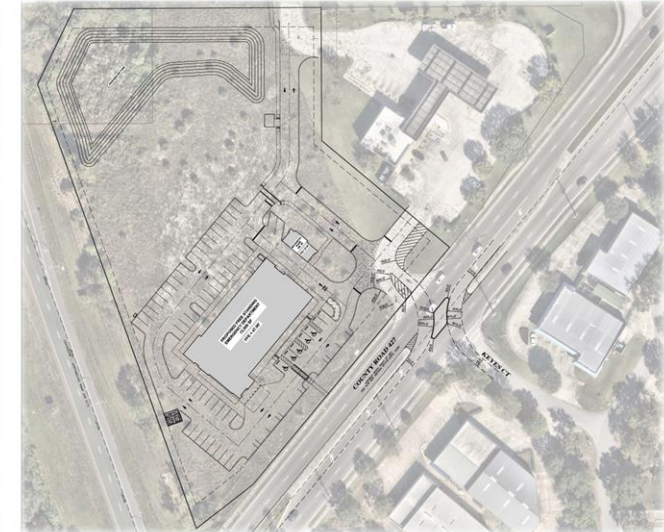
Skyway Landing



## Skyway Landing

- 15.65 acres
- 84 townhomes

Advent Health Emergency Room

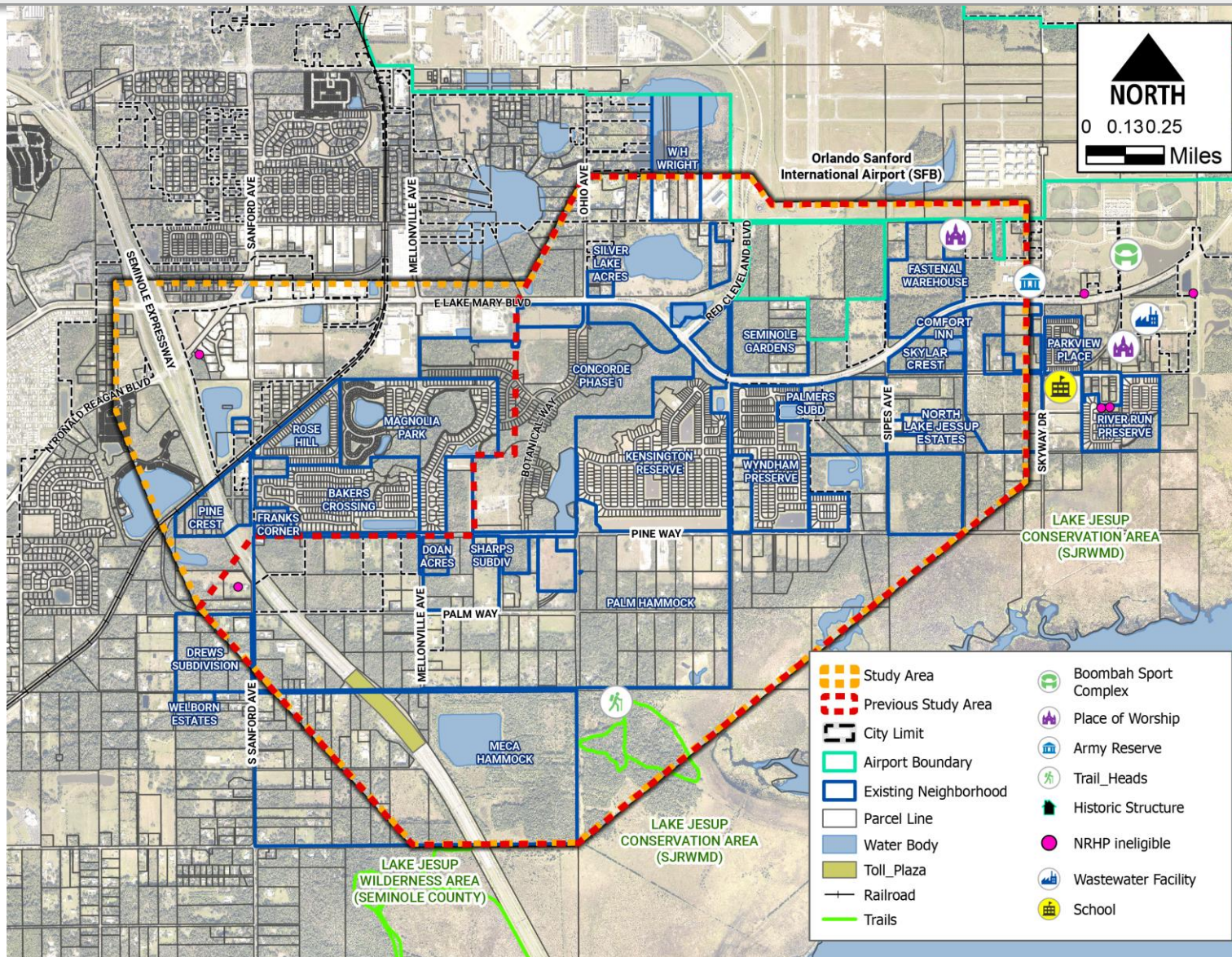


## Advent Health ER

- 4.7 acres
- Emergency room



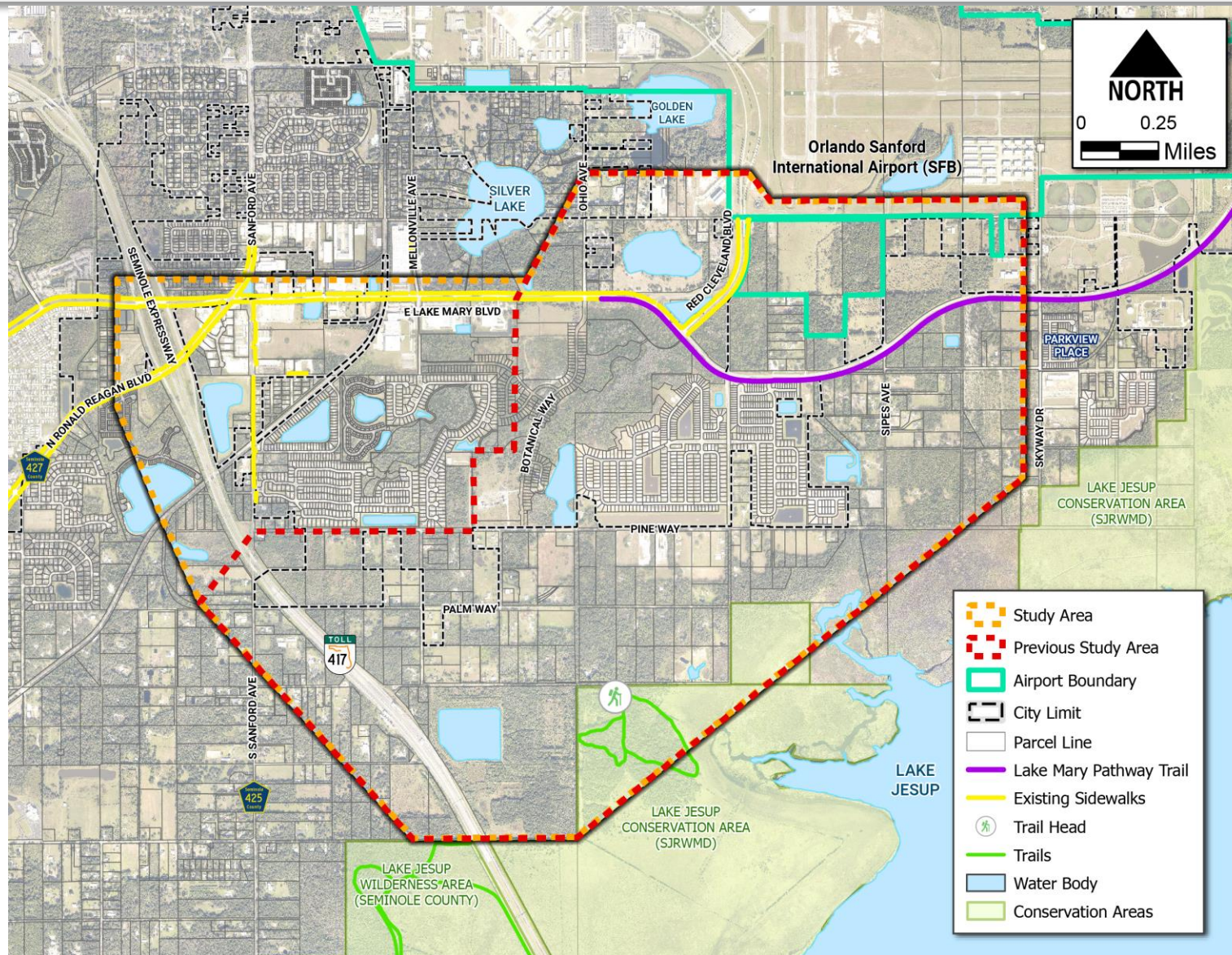
# Community Facilities



- Orlando Sanford International Airport
- Boombah Sports Complex
- Places of Worship
- Schools
- Army Reserve Facility
- Wastewater Facility



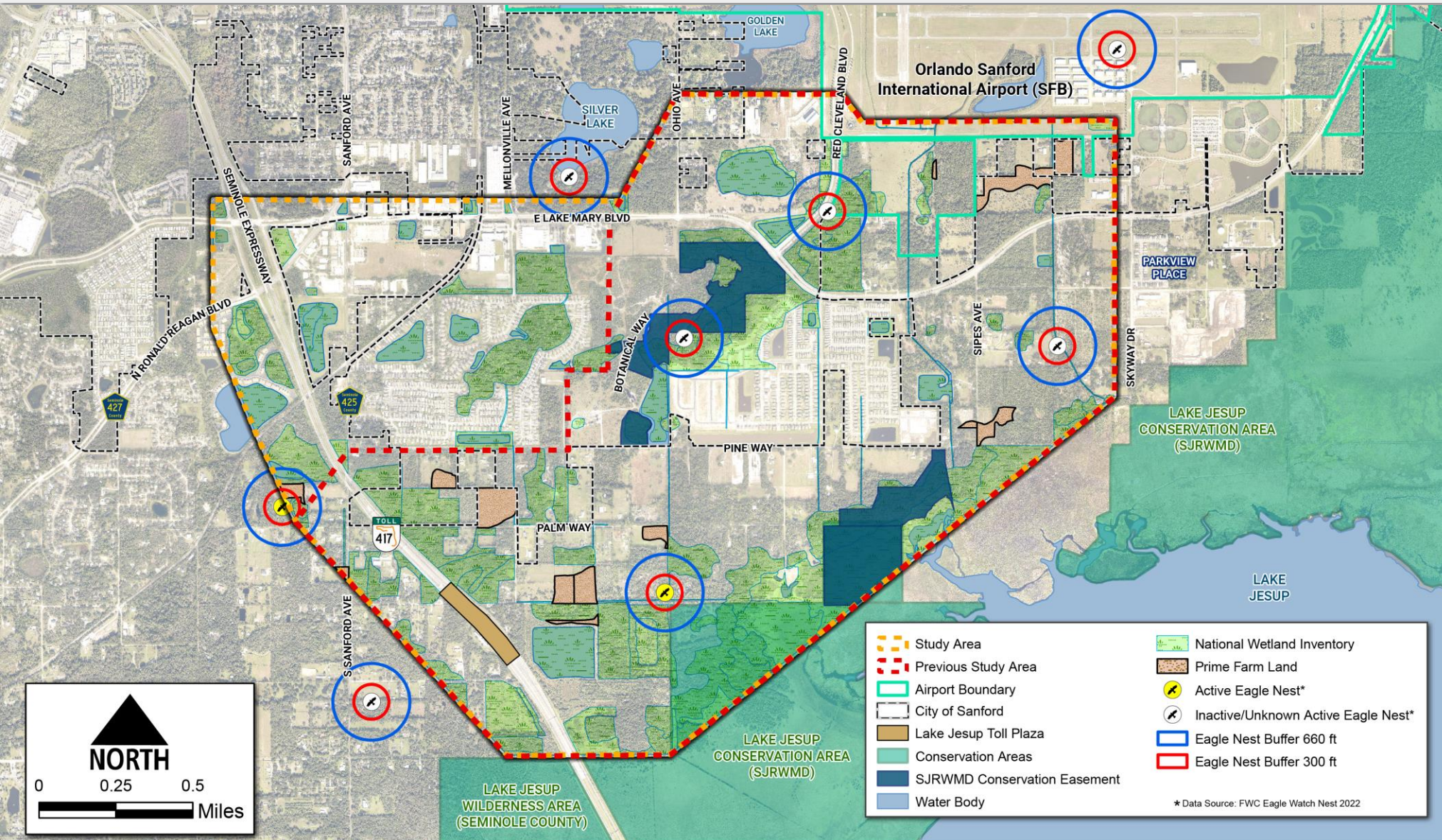
# Bicycle and Pedestrian Facilities



- Lake Mary Pathway Trail
  - From Red Cleveland Blvd to the Boombah Sports Complex
  - Future extension from US 17/92 to Red Cleveland Blvd
- Existing Sidewalks



# Natural Constraints



## Forested, herbaceous, and lake systems within the project area

- Lake Jesup Basin
- Several conservation easements
- Lake Jesup Conservation Area
- Wetlands and surface waters

## USFWS Consultation Areas

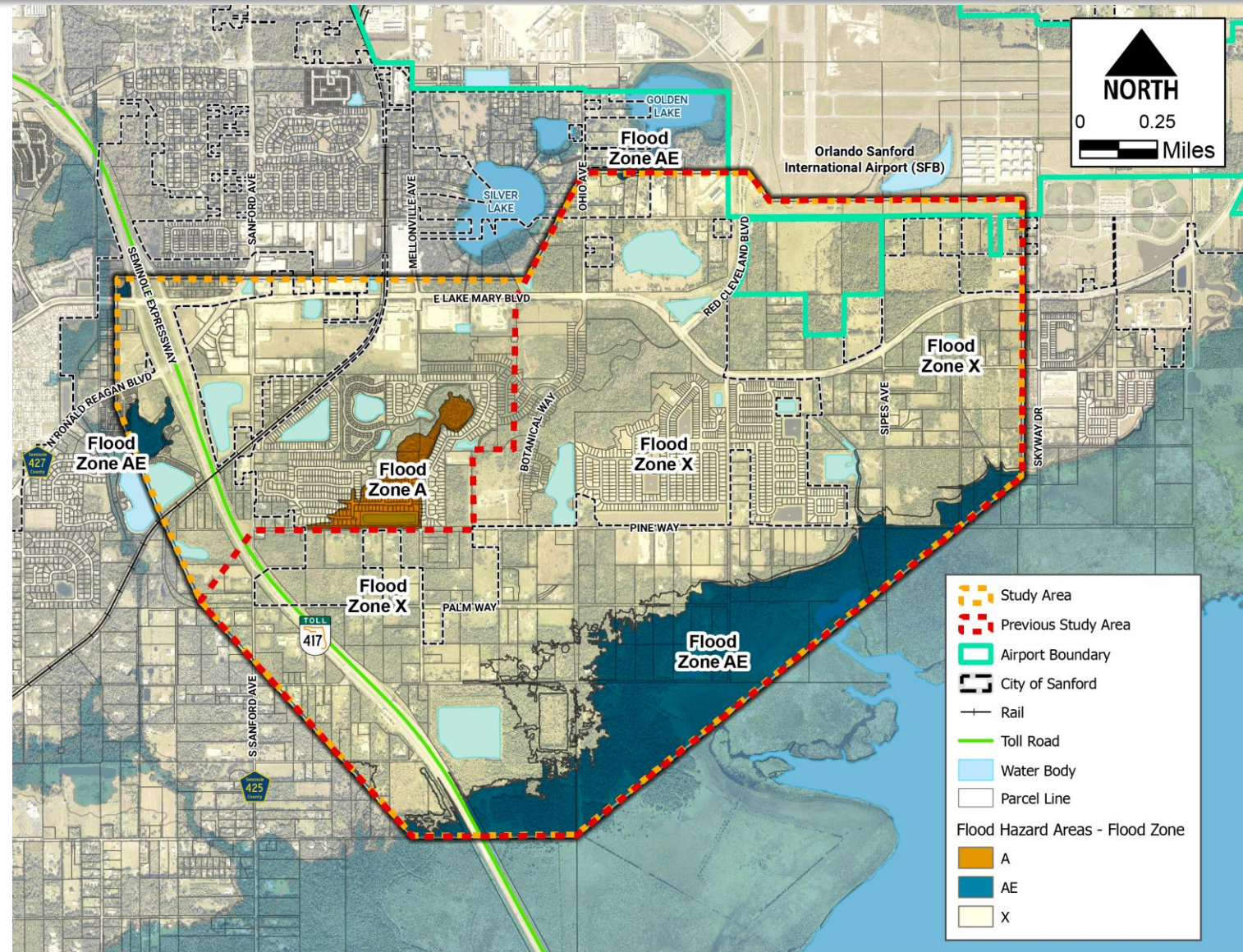
- Caracara, scrub-jay, snail kite, manatee
- Several bald eagle nests
- Wood stork Core Foraging Areas



# Floodplain Map

## Floodplain Impacts

- FEMA Flood Insurance Rate Maps for Seminole County
  - 100-year floodplain, within Zones A, AE and X



# Agency & Stakeholder Input

- Related Projects
- Planned Developments (Seminole County and City of Sanford)
- SJRWMD Conservation Easements and Criteria
- Alternatives and Engineering Considerations
- Environmental Effects
- Mobility Alternatives







CENTRAL  
FLORIDA  
EXPRESSWAY  
AUTHORITY

DISCUSSION



# PD&E Study Schedule

## SR 417 Sanford Airport Connector PD&E Study Schedule (Subject to Change)

	2024			2025		
	Q2	Q3	Q4	Q1	Q2	Q3
Notice to Proceed	★					
ESC Project Kickoff Meeting	★					
Data Collection						
EAG, PAG, CEG & ESC Meetings		★				
Alternatives Evaluation						
Public Kickoff Meeting		★				
Draft PD&E Study Reports						
EAG, PAG, CEG, & ESC Meetings				★		
Alternatives Public Workshop				★		
Refine Alternatives						
EAG, PAG, CEG, & ESC Closeout Meetings					★	
Public Hearing					★	
Finalize PD&E Study Reports						
CFX Review/Study Complete						★

# Project Contact

## For more information contact:

Nick Lulli

Public Involvement Coordinator

407-885-4743

[ProjectStudies@CFXway.com](mailto:ProjectStudies@CFXway.com)

Will Hawthorne, PE

Director of Transportation

Planning & Policy

407-690-5337

[Will.Hawthorne@CFXway.com](mailto:Will.Hawthorne@CFXway.com)

CFX web address:

[www.CFXway.com](http://www.CFXway.com)

Shortened study web address:

[bit.ly/46HOvV0](http://bit.ly/46HOvV0)







CENTRAL  
FLORIDA  
EXPRESSWAY  
AUTHORITY

THANK YOU