

An aerial photograph showing a multi-lane highway (SR 417) winding through a lush green landscape. The highway has several vehicles and a green overhead sign. The surrounding area is densely forested with green trees, and some residential or commercial buildings are visible in the distance under a blue sky with scattered clouds.

SR 417 Sanford Airport Connector Project Development & Environment Study

Public Kickoff Meeting

— September 12, 2024 —

Title VI Compliance

This meeting, project, or study is being conducted without regard to race, color, national origin, age, sex, religion, disability or family status. Persons wishing to express their concerns relative to compliance by the Central Florida Expressway Authority (CFX) with Title VI may do so by contacting:

Nick Lulli

Public Involvement Coordinator

4974 ORL Tower Road Orlando, FL 32807

407-885-4743

ProjectStudies@CFXway.com

All inquiries or complaints will be handled according to CFX procedure and in a prompt and courteous manner.

About CFX



- 125 Miles of Expressway
- Brevard, Lake, Orange, Osceola and Seminole Counties
- \$4 Billion 5-Year Work Plan

About CFX



Brandon Arrington
Chairman,
Osceola County Representative



Christopher "C.J." Maier
Vice Chairman,
Governor's Appointee



Buddy Dyer
Treasurer,
Mayor of Orlando



Jerry Demings
Orange County Mayor



Tom Goodson
Brevard County Representative



Andria Herr
Seminole County Representative



Rafael E. Martinez
Governor's Appointee



Christine Moore
Orange County Representative



Sean Parks
Lake County Representative



Rick Pullum
Governor's Appointee

Mission

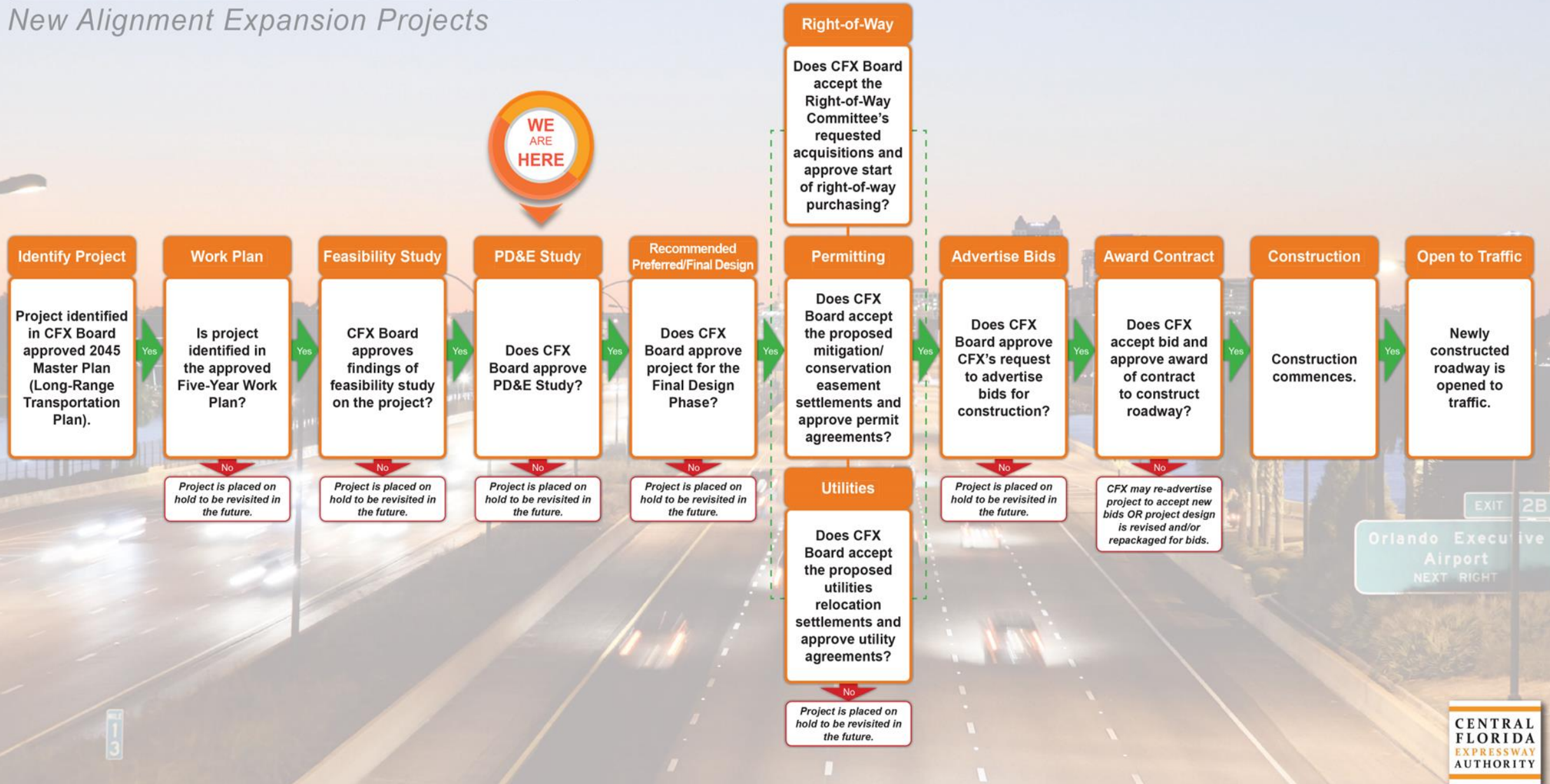
To build, operate and maintain a mobility network through accountability, fiscally sound practices and a community focus.

Vision

To provide the region with a world-class, integrated mobility network that drives economic prosperity and quality of life.

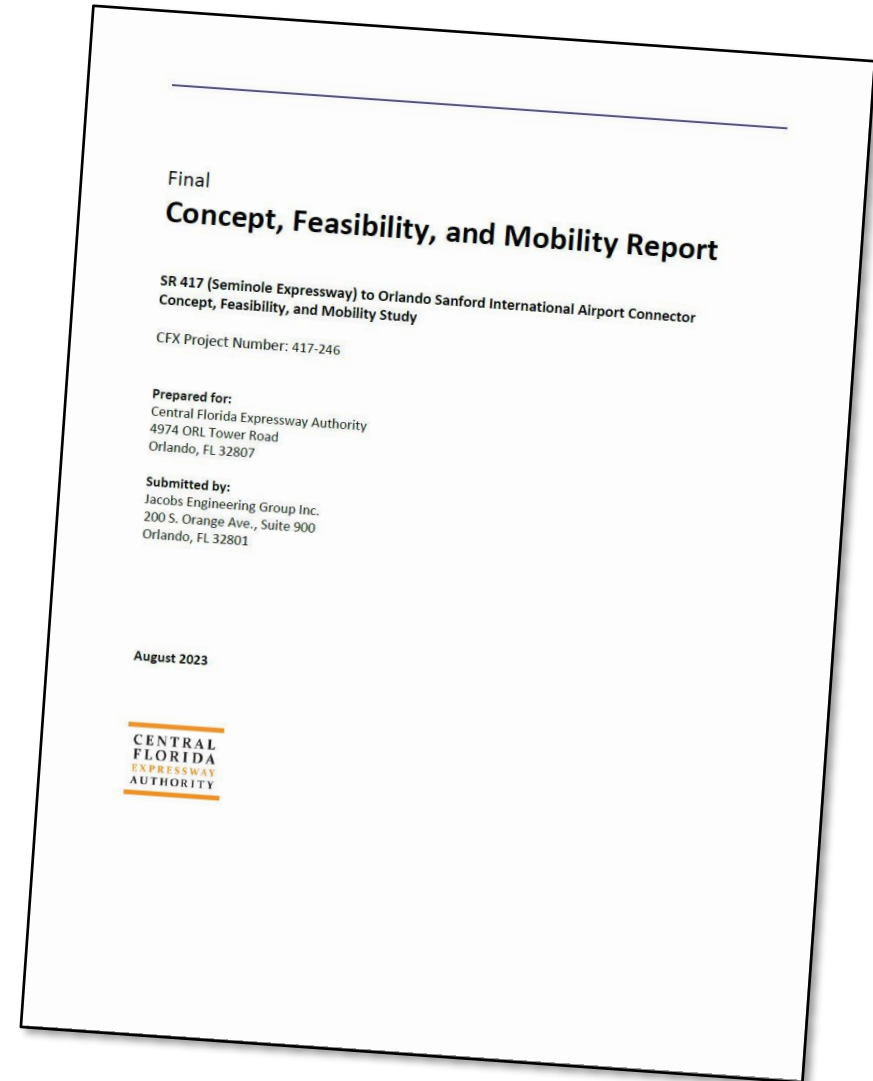
PROJECT DEVELOPMENT PROCESS

New Alignment Expansion Projects

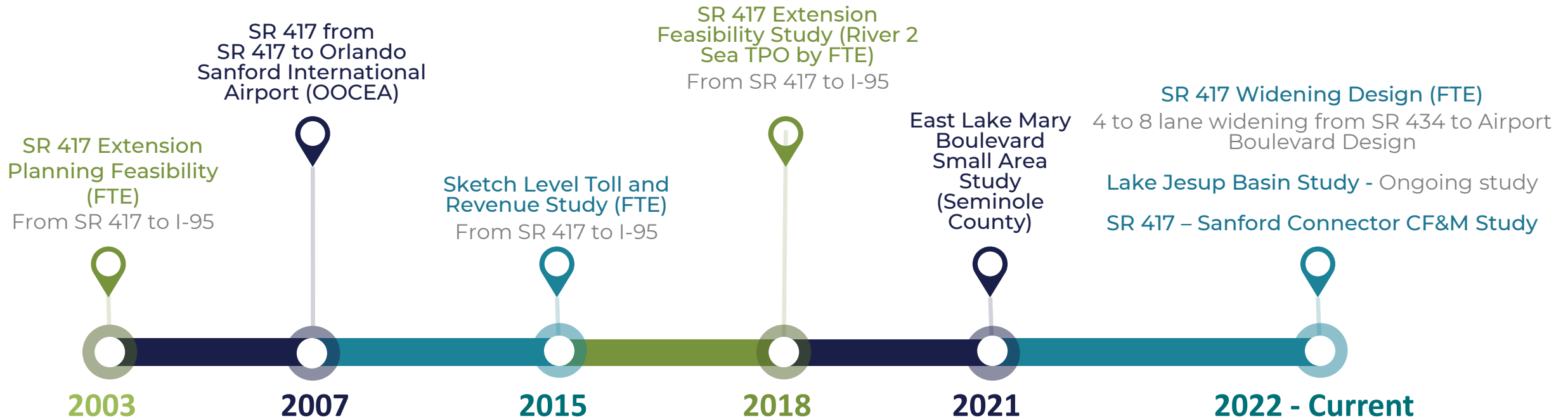


Background

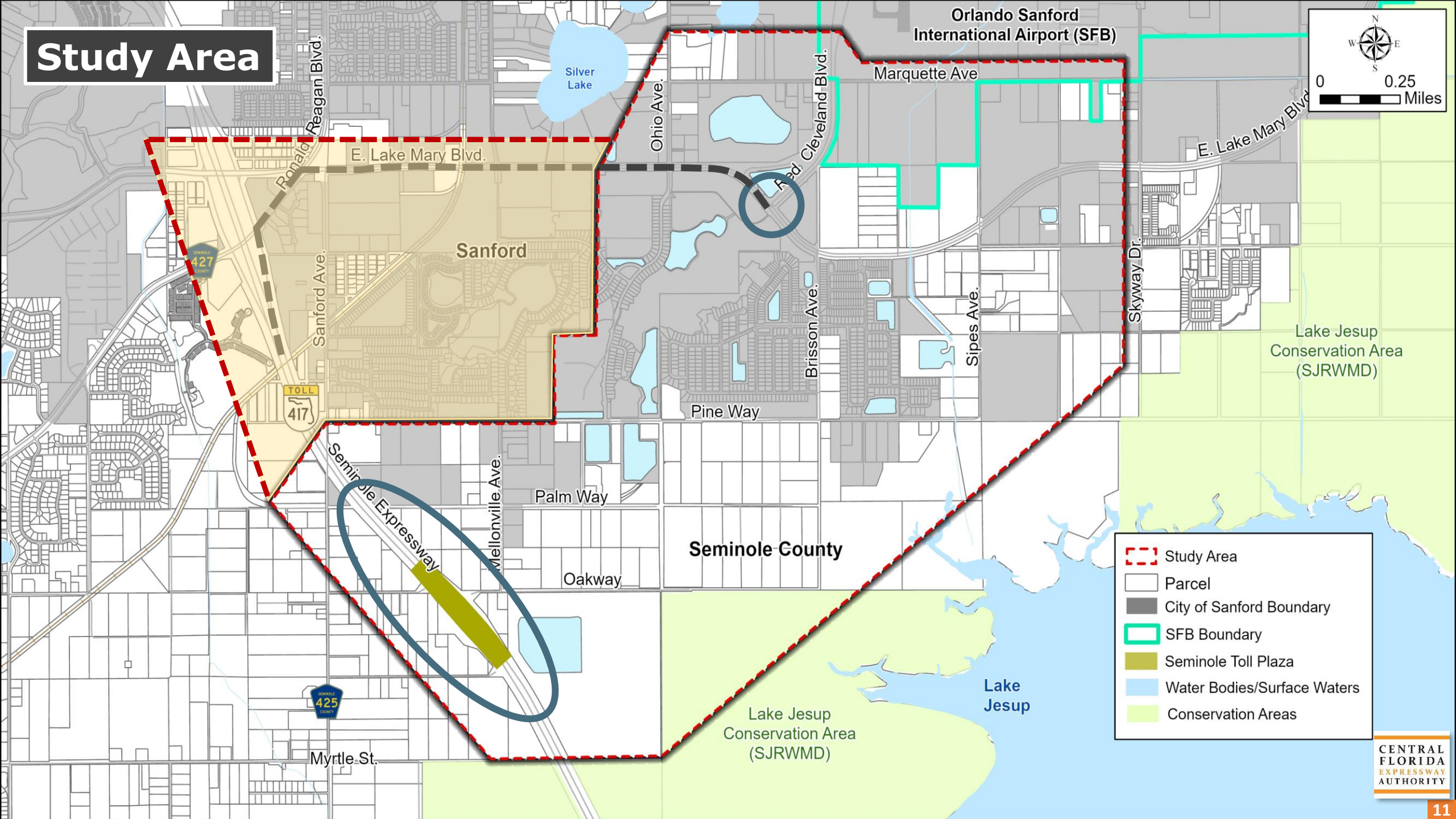
- In 2023, CFX completed CF&M Study to evaluate a new direct expressway connection between SR 417 and the Orlando Sanford International Airport
- Four alternatives were evaluated
- CFX Board approved CF&M Study and authorized a more detailed PD&E Study to further evaluate the alternatives
- At the request of the Environmental Stewardship Committee, the PD&E Study will also evaluate an elevated viaduct alternative along East Lake Mary Boulevard



Project History



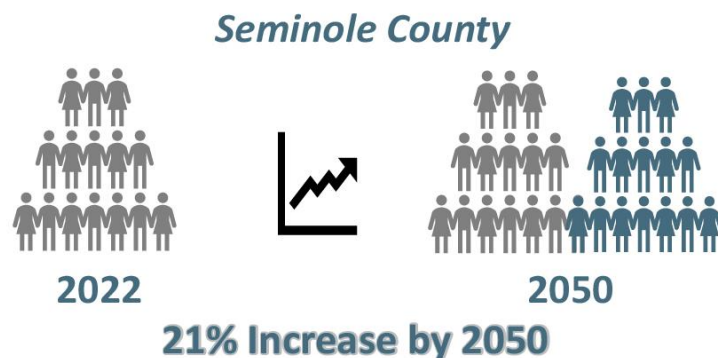
Study Area



- Study Area
- Parcel
- City of Sanford Boundary
- SFB Boundary
- Seminole Toll Plaza
- Water Bodies/Surface Waters
- Conservation Areas

Need for the Project

Population Projections



Passenger Boarding Growth

1.4M Passenger Boardings Today

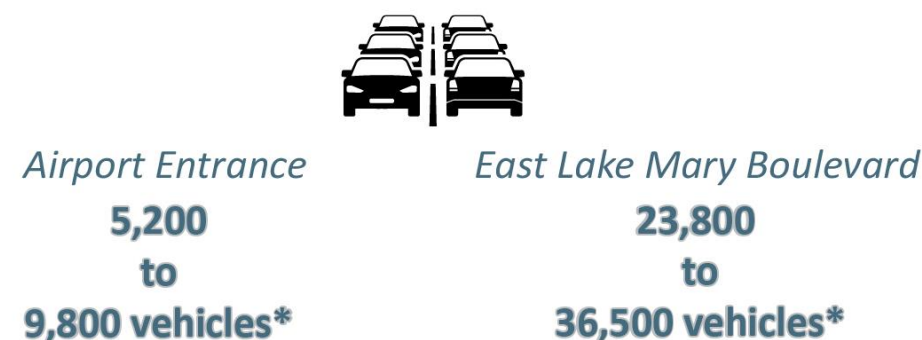


91% Increase by 2037

Planned Developments



Increased Traffic by 2050



*increased traffic from Year 2022 to the 2050 No-Build Condition

Purpose of the Project



Improves Airport Access



Addresses Future Traffic Needs and Safety

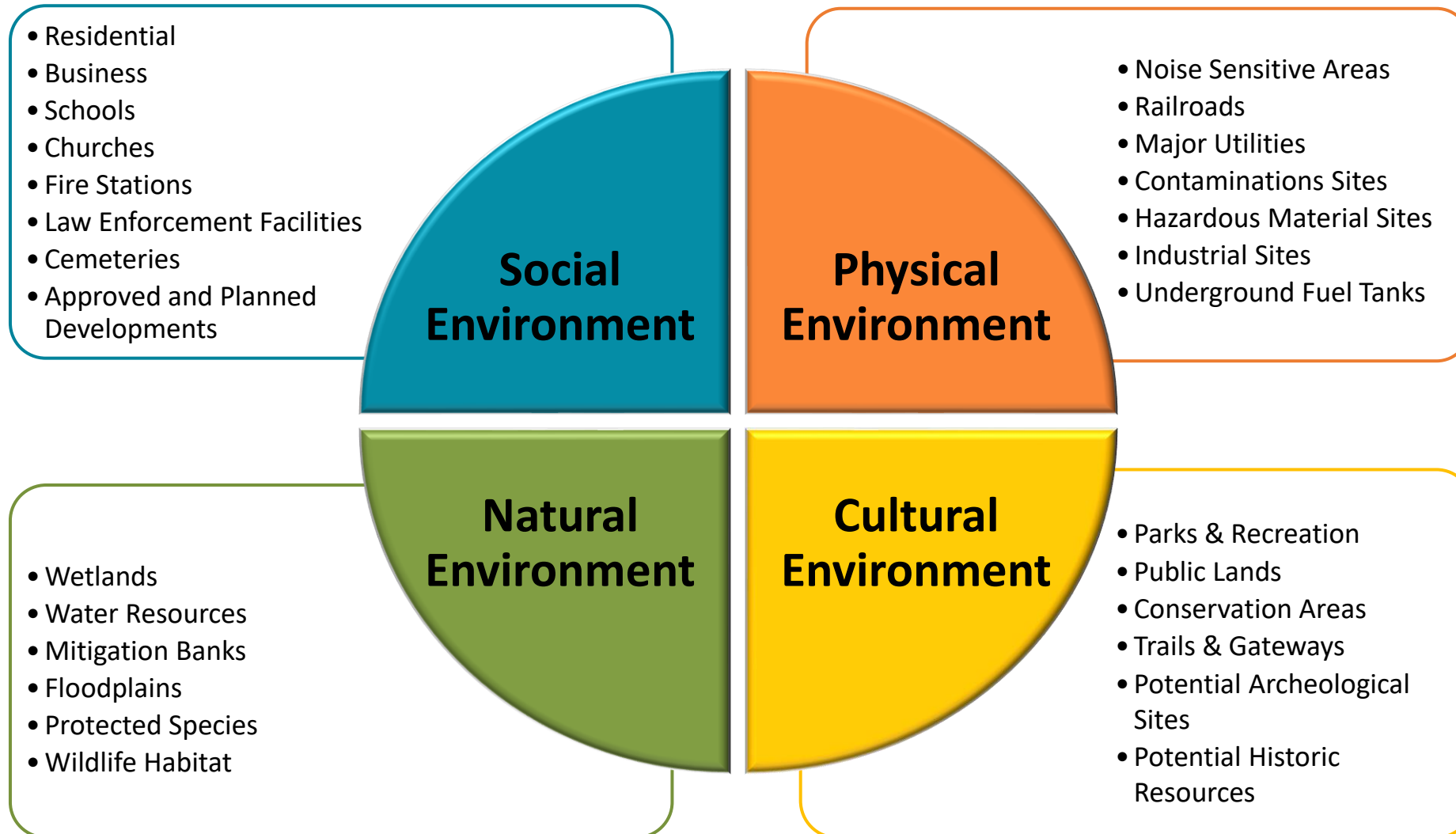


Enhances Regional Connectivity



Reduces traffic by 44% in 2030 (Diverts 9,700 vehicles/day at Lake Mary Blvd interchange)

PD&E Study Evaluation Criteria

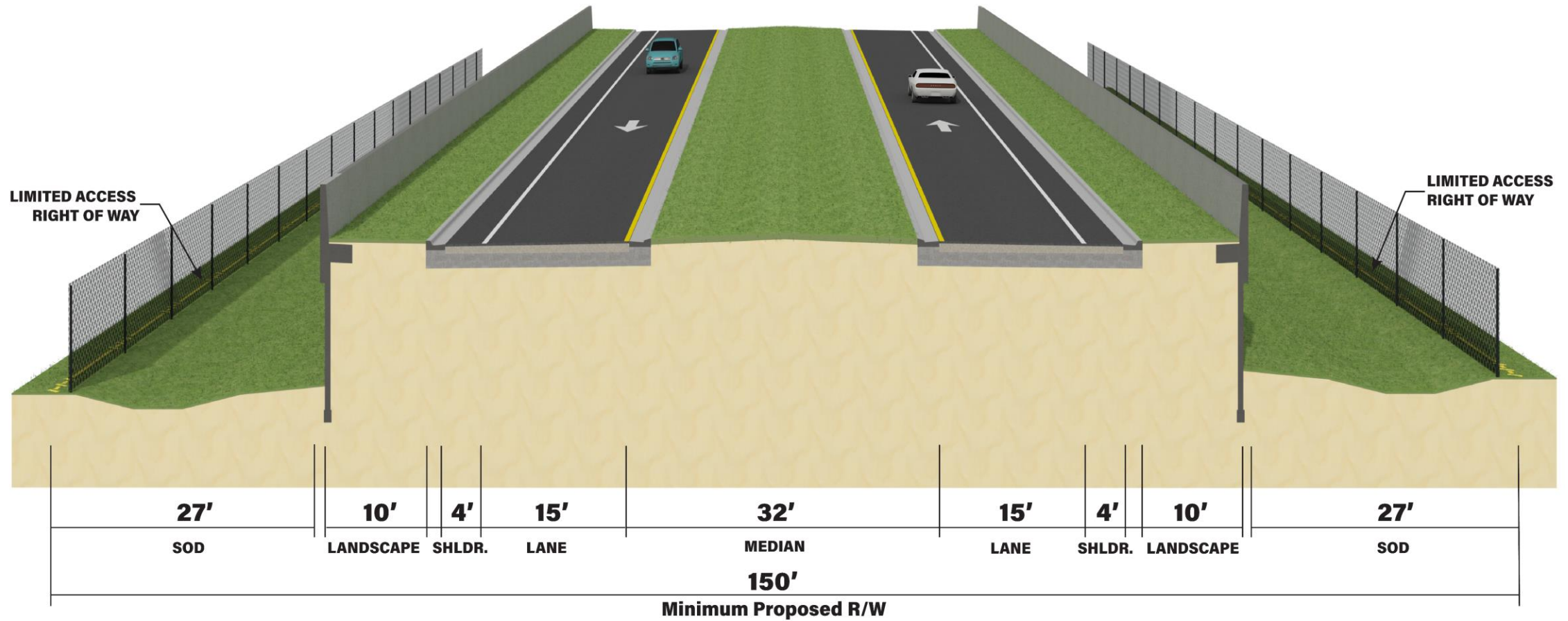


Alternatives From CF&M Study

- Study to evaluate a new expressway connection from SR 417 to the Orlando Sanford International Airport
- Alternative 1 attempts to minimize direct impacts to residential development
- Alternative 2 has the least potential environmental impacts
- Alternatives 3a and 3d attempt to balance direct impacts to residential development and environmentally sensitive land

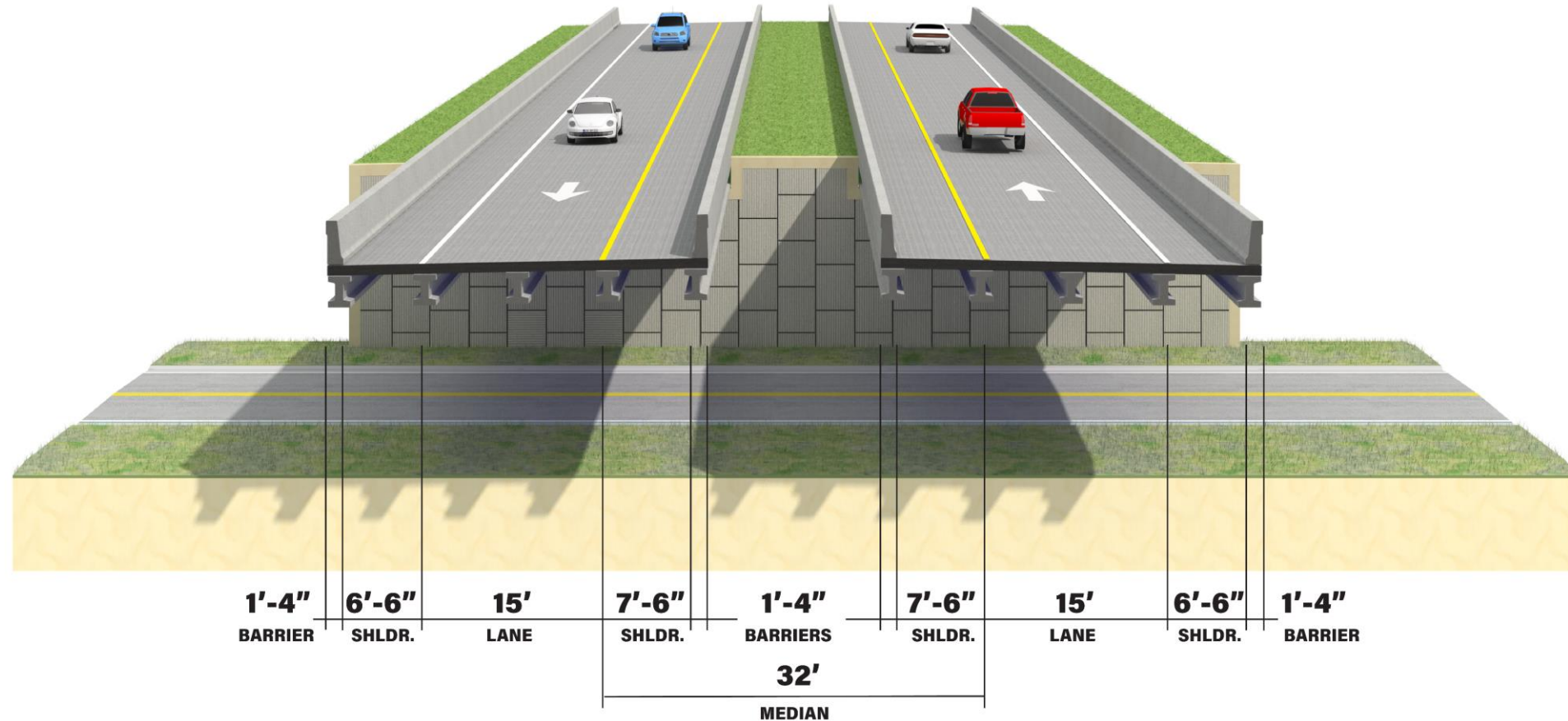


Proposed Connector Typical Section (2-Lane)



Design Speed = 45 mph
Approximate ROW = 150 feet

Proposed Connector Bridge Typical Section



Typical is for local road crossings under 500 ft. in length

Design Speed = 45 mph

Approximate ROW = 77 feet & 8 inches

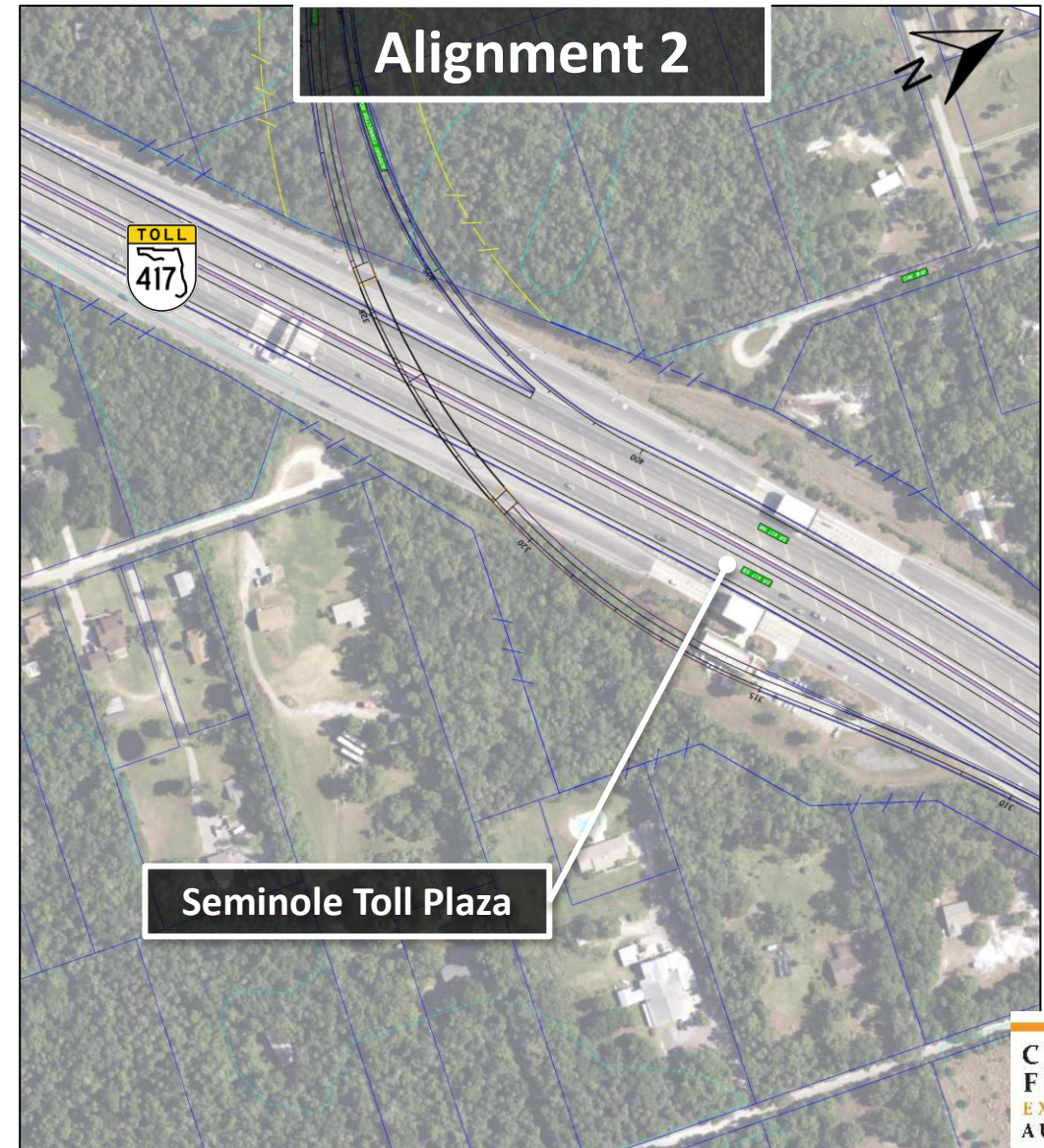
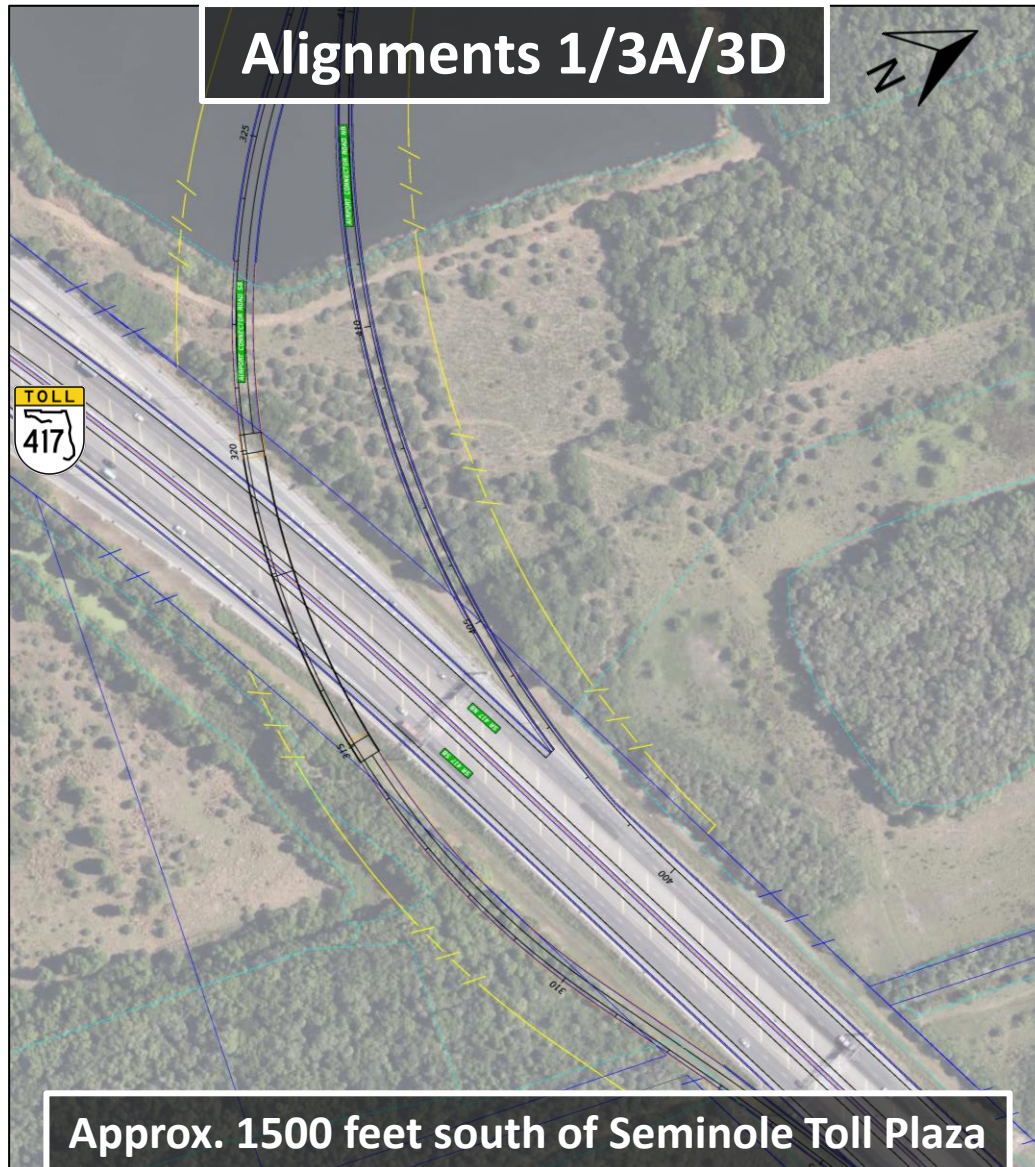
Proposed Interchange at East Lake Mary Blvd.



Preliminary Rendering

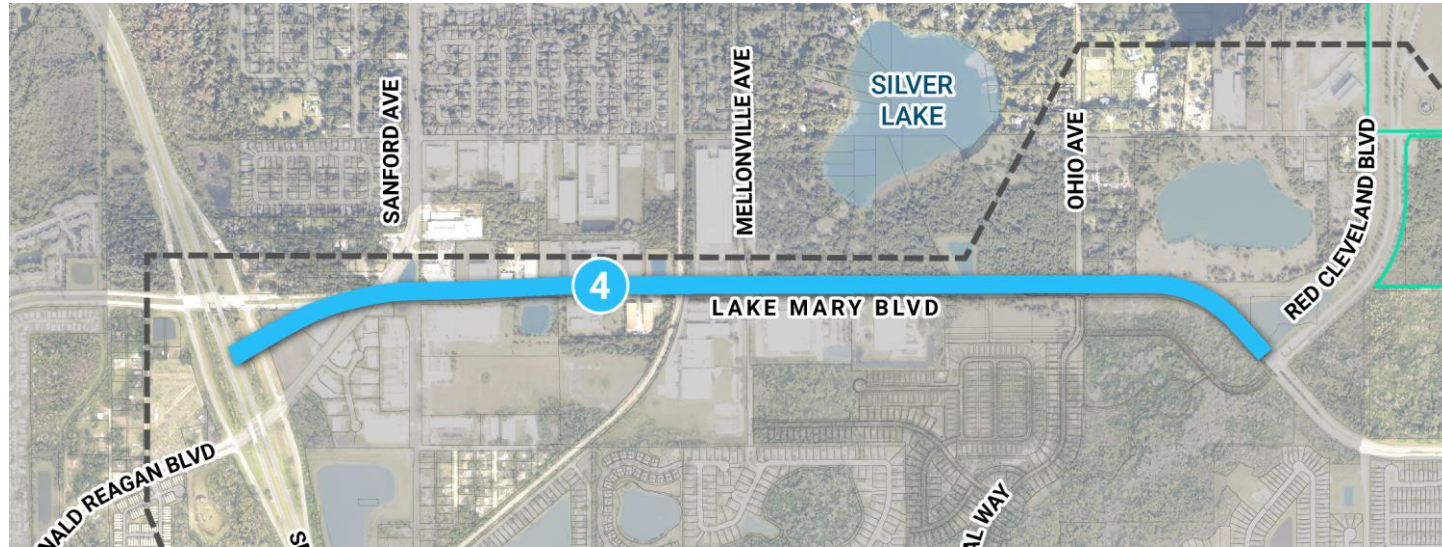
- Signalized Intersection
- Access to existing roadways maintained
- Full access to East Lake Mary Blvd.
- Improves future intersection operations

Proposed Interchange at SR 417

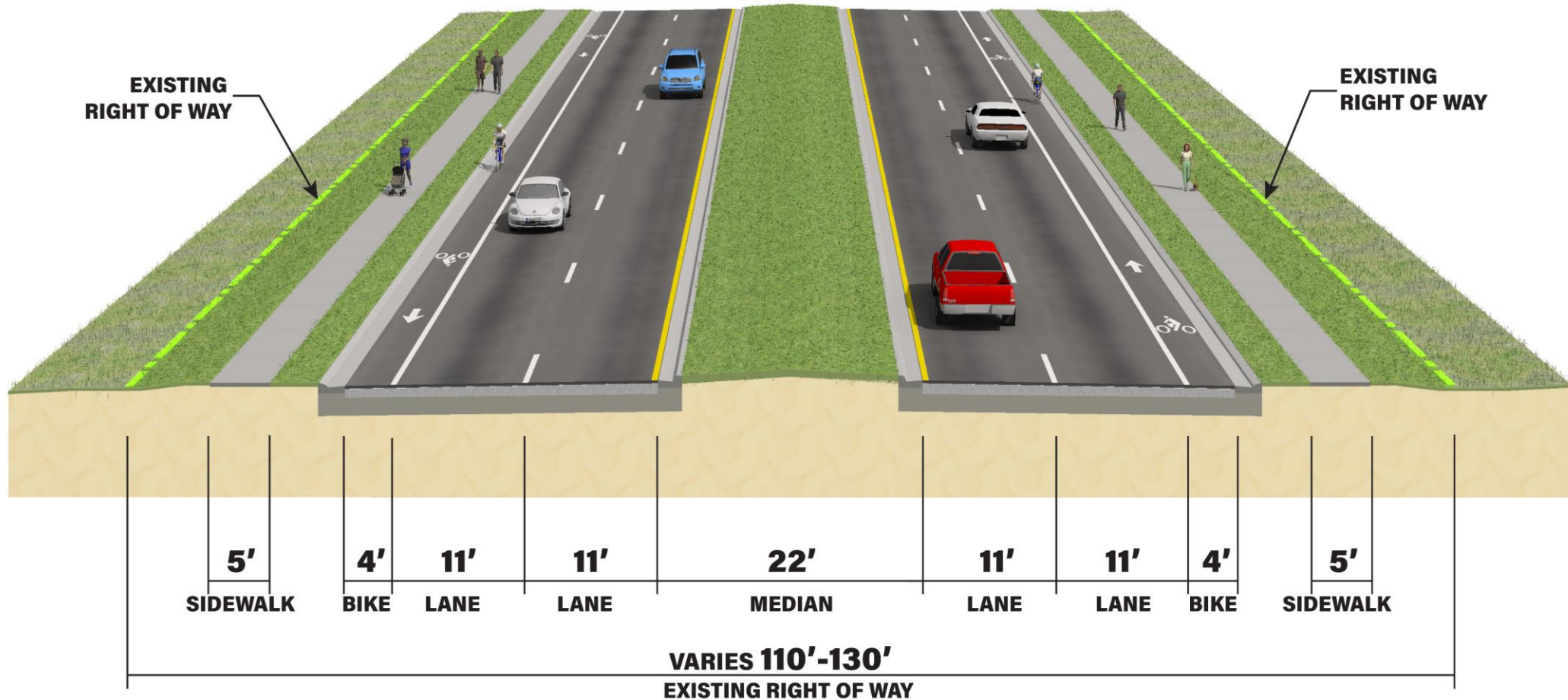


Additional Alternative

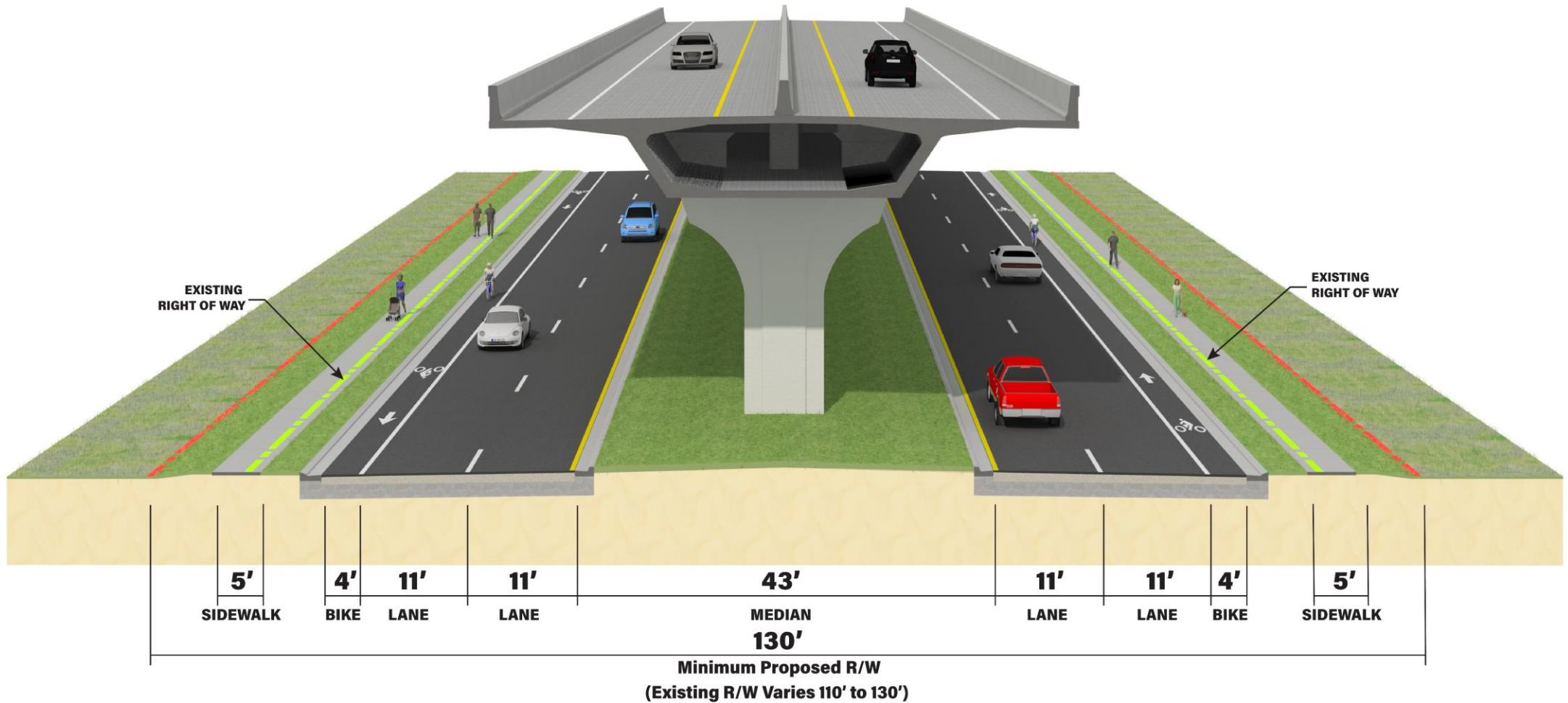
- At the request of the ESC, a new alternative will be evaluated that involves an elevated roadway (viaduct) along East Lake Mary Boulevard
- An evaluation of whether this concept meets the purpose and need for the project will be made
- Costs and impacts will be determined so this alternative can be compared to the previously identified alternatives



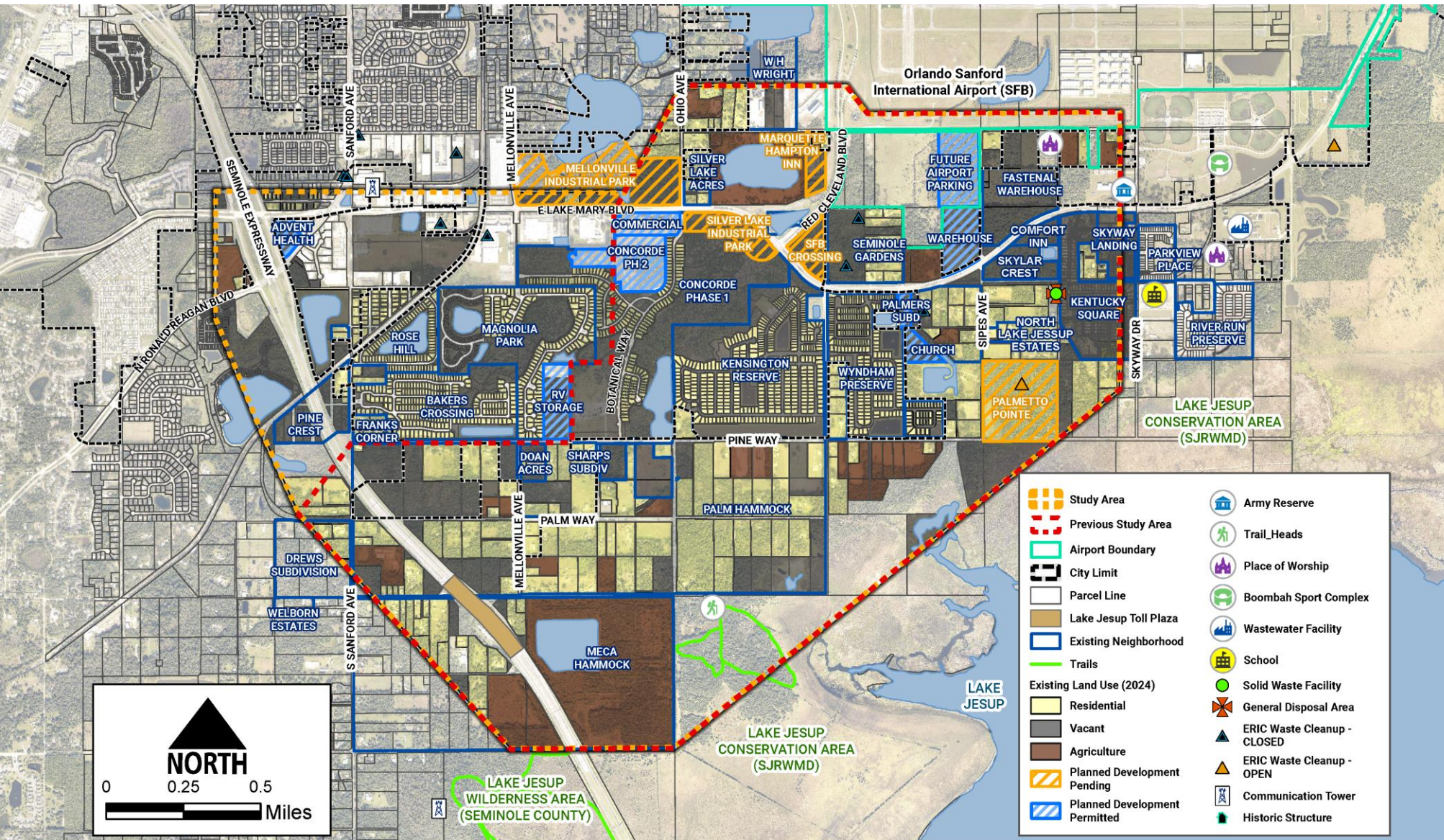
East Lake Mary Blvd. Existing Typical Section



Proposed Viaduct Typical Section



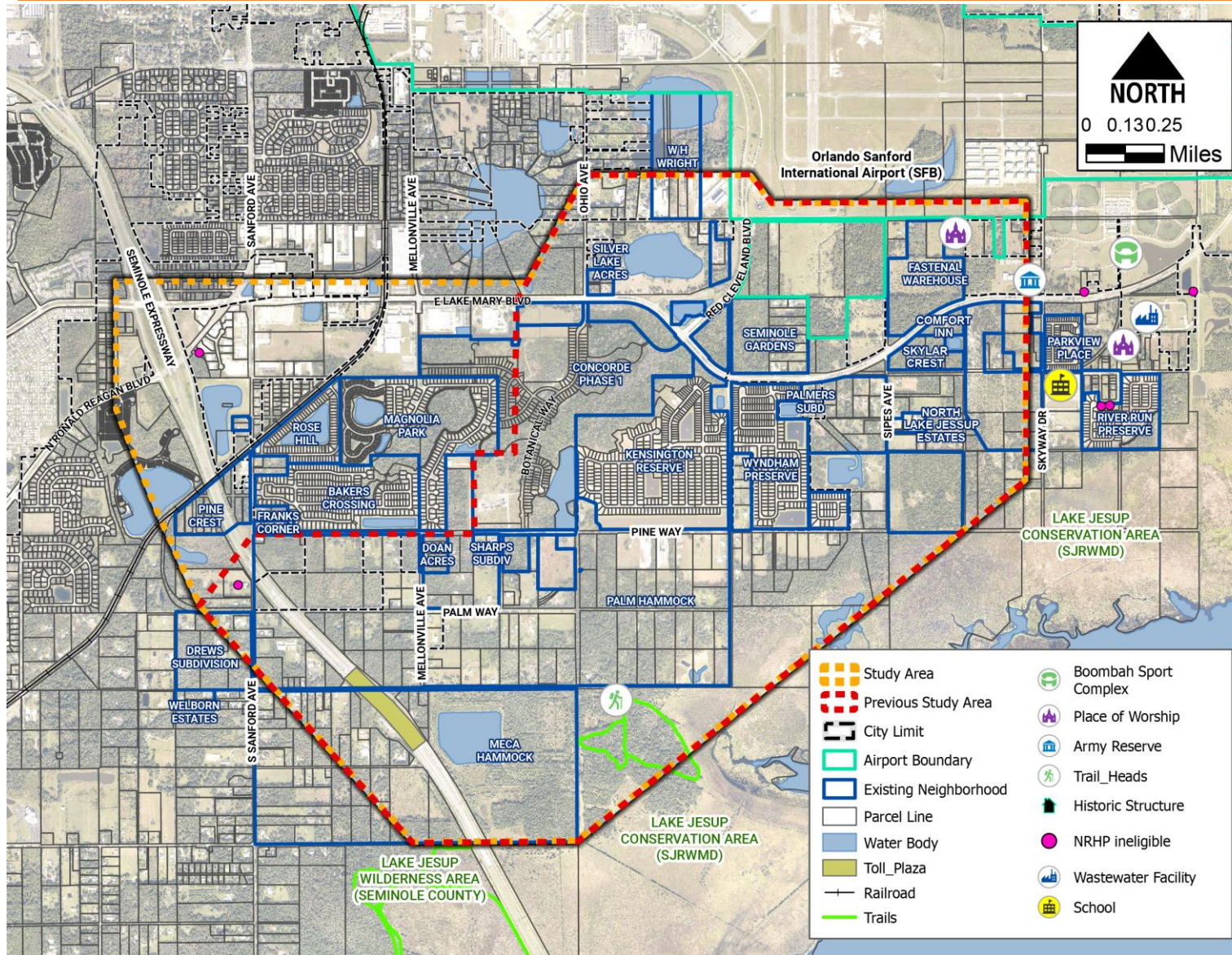
Sociocultural Constraints



Land Use

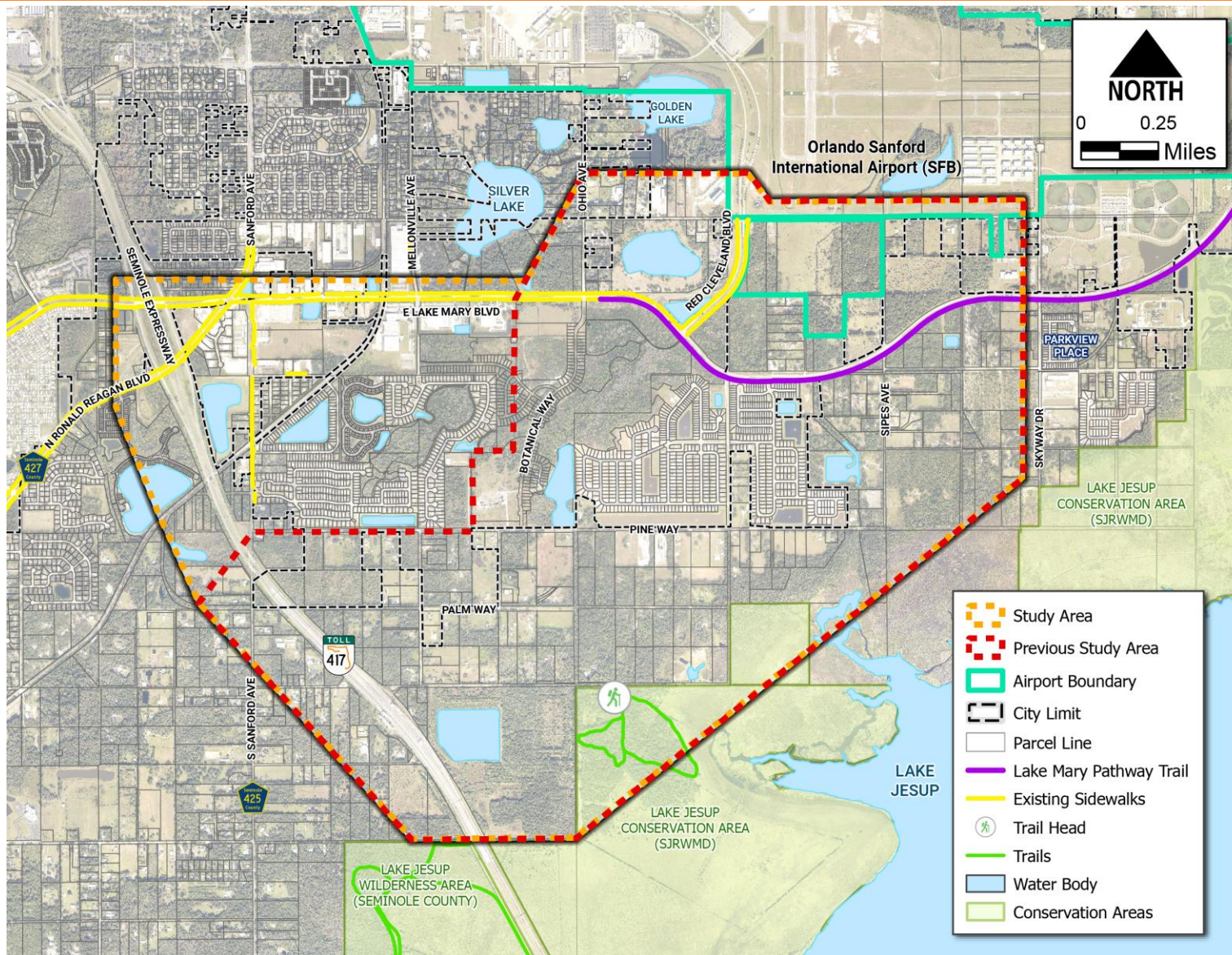
- Numerous existing residential neighborhoods
- Planned residential and commercial development
- Agricultural and conservation lands

Community Facilities



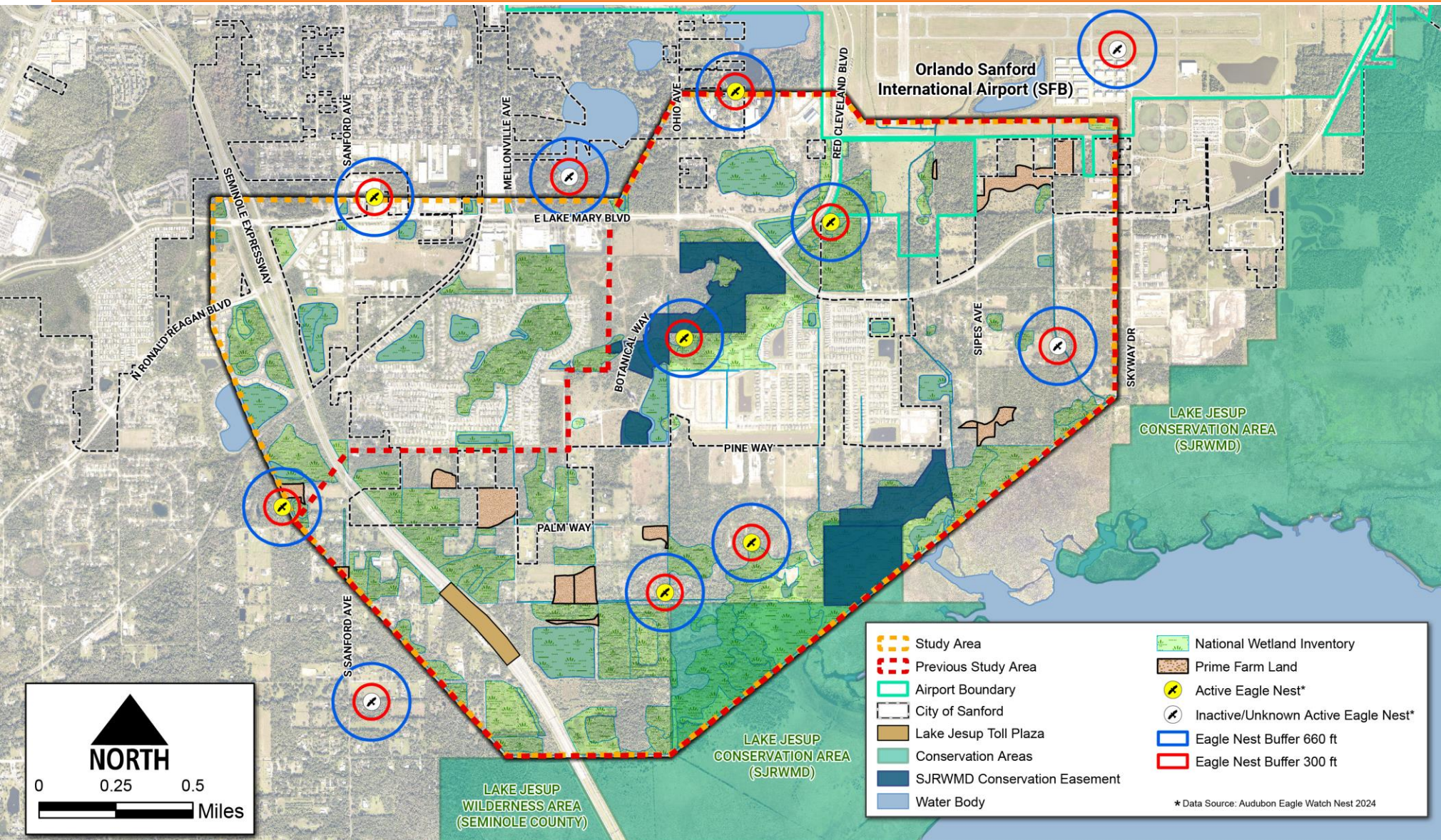
- Orlando Sanford International Airport
- Boombah Sports Complex
- Places of Worship
- Schools
- Army Reserve Facility
- Wastewater Facility

Bicycle and Pedestrian Facilities



- Lake Mary Pathway Trail
 - From Red Cleveland Blvd to the Boombah Sports Complex
 - Future extension from US 17/92 to Red Cleveland Blvd
- Existing Sidewalks

Natural Constraints



Forested, herbaceous, and lake systems within the project area

- Lake Jesup Basin
- Several conservation easements
- Lake Jesup Conservation Area
- Wetlands and surface waters

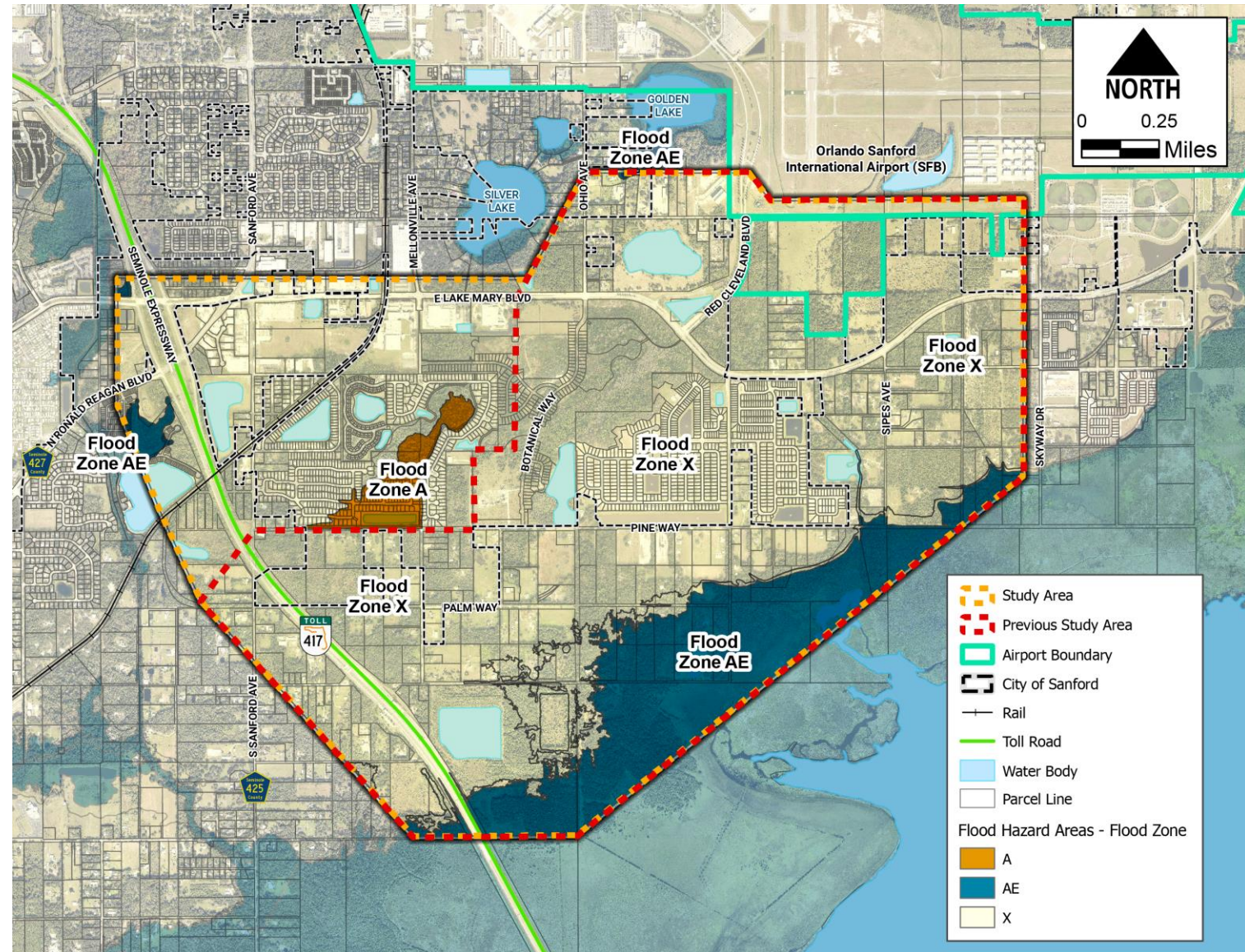
USFWS Consultation Areas

- Caracara, scrub-jay, snail kite, manatee
- Several bald eagle nests
- Wood stork Core Foraging Areas

Floodplain Map

Floodplain Impacts

- FEMA Flood Insurance Rate Maps for Seminole County
 - 100-year floodplain, within Zones A, AE and X



Species Involvement

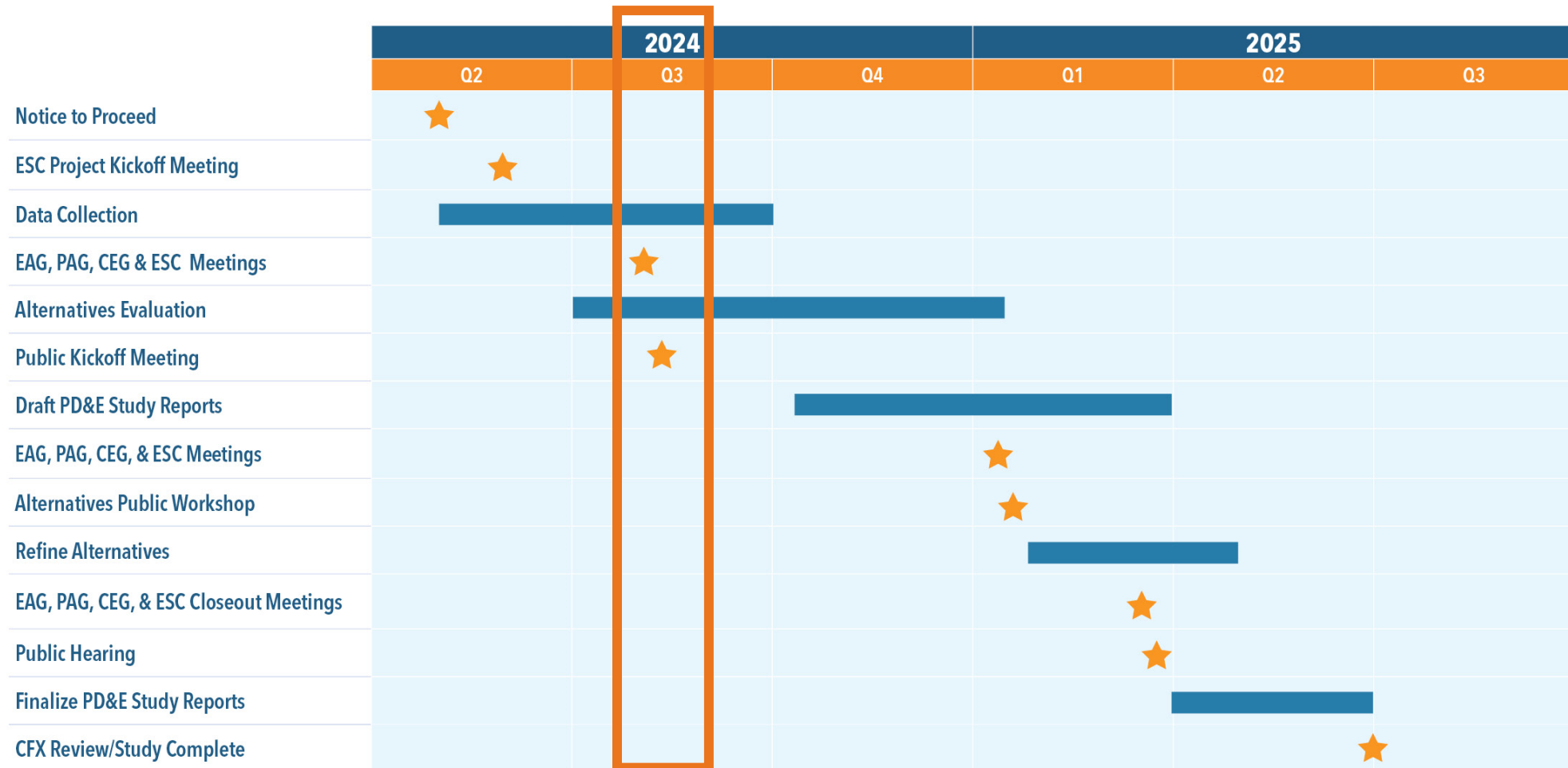
Protected Species & Habitat

- Consultation Areas: Florida scrub jay, Everglade snail kite, crested caracara, and manatee (Lake Jesup).
- Florida Wildlife Corridor: No Impacts
- Potential Species Involvement (medium/high occurrence):
 - Eastern indigo snake
 - Florida sandhill crane
 - Little blue heron
 - Bald eagle (up to three nests)
 - Florida black bear
 - Gopher tortoise
 - Roseate spoonbill
 - Short-tailed snake
 - Florida burrowing owl
 - Tricolored heron
 - Southeastern American kestrel
 - Wood stork
 - Everglades snail kite



PD&E Study Schedule

SR 417 Sanford Airport Connector PD&E Study Schedule (Subject to Change)



Public Involvement Opportunities

Shortened study website address:

bit.ly/46HOvV0

CFX Web Address:

www.CFXway.com



Nick Lulli

Public Involvement Coordinator

407-885-4743

ProjectStudies@CFXway.com

[E-PASS LOGIN](#)
[PAY YOUR INVOICE](#)
[FAQS](#)
[CONTACT US](#)

[CFX](#)

FOR TRAVELERS ▾
 AGENCY INFO ▾
 PROJECTS & STUDIES ▾
 DOING BUSINESS ▾
 E-PASS

Project Development & Environment (PD&E) Study: SR 417 Sanford Airport Connector

[Go Back](#)

About the SR 417 Sanford Airport Connector Project Development and Environment (PD&E) Study

The State Road 417 Sanford Airport Connector proposes providing direct access between SR 417 (Seminole Expressway) and the Orlando Sanford International Airport. The new connector would provide direct access to the airport to meet the growing air passenger and flight demands and help to alleviate traffic on local roads.

This PD&E Study will consider, analyze, and evaluate the location of an approximately two-mile expressway connection from SR 417 to the entrance to the Orlando Sanford International Airport at or near Red Cleveland Boulevard. The study will also evaluate an elevated alternative along East Lake Mary Boulevard. This PD&E Study will build upon the conclusions and findings from the previous SR 417 to Orlando Sanford International Airport Connector Concept, Feasibility, and Mobility (CF&M) Study completed in August 2023.

The study objectives include:

Additional SR 417 Sanford Airport Connector PD&E Information

Email: ProjectStudies@CFXway.com
Phone: 407-885-4743

Central Florida Expressway Authority

[4974 ORL Tower Road
Orlando, FL 32807](#)
Phone: (407) 690-5000
Fax: (407) 690-5011
Email: info@CFXway.com



**CENTRAL
FLORIDA
EXPRESSWAY
AUTHORITY**

THANK YOU!