



**CENTRAL
FLORIDA
EXPRESSWAY
AUTHORITY**

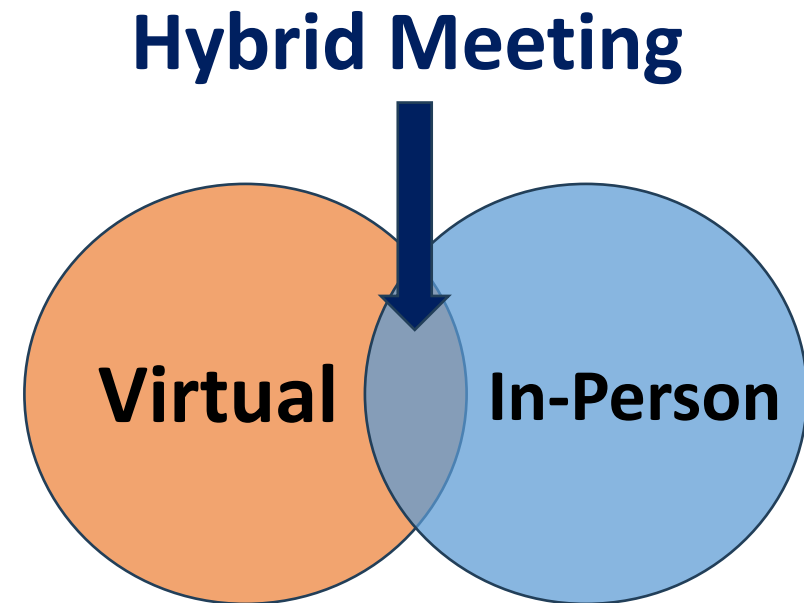
**SR 515 Northeast Connector Expressway Phase 2
Project Development & Environment (PD&E) Study**

Alternatives Public Workshop

April 22/23, 2026

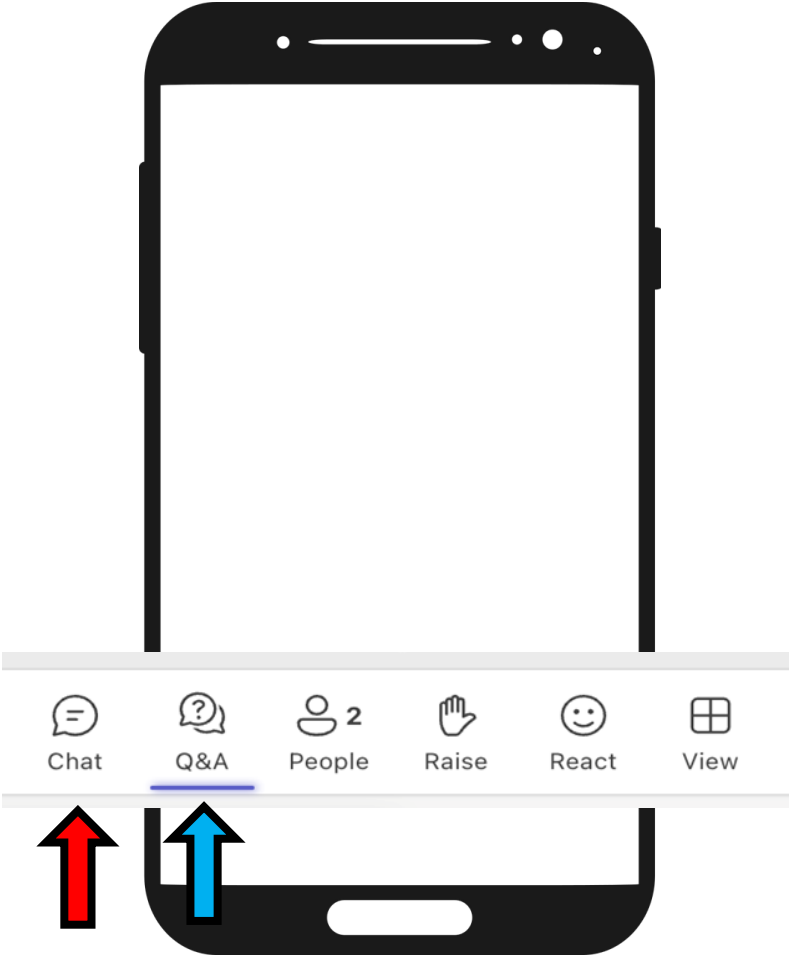
About the Meeting

- This public meeting is being conducted in a hybrid format
 - In-person public meeting will be held on April 23, 2026
 - This is the virtual component
- A copy of the presentation can be found on the project website at: https://bit.ly/sr515_pde

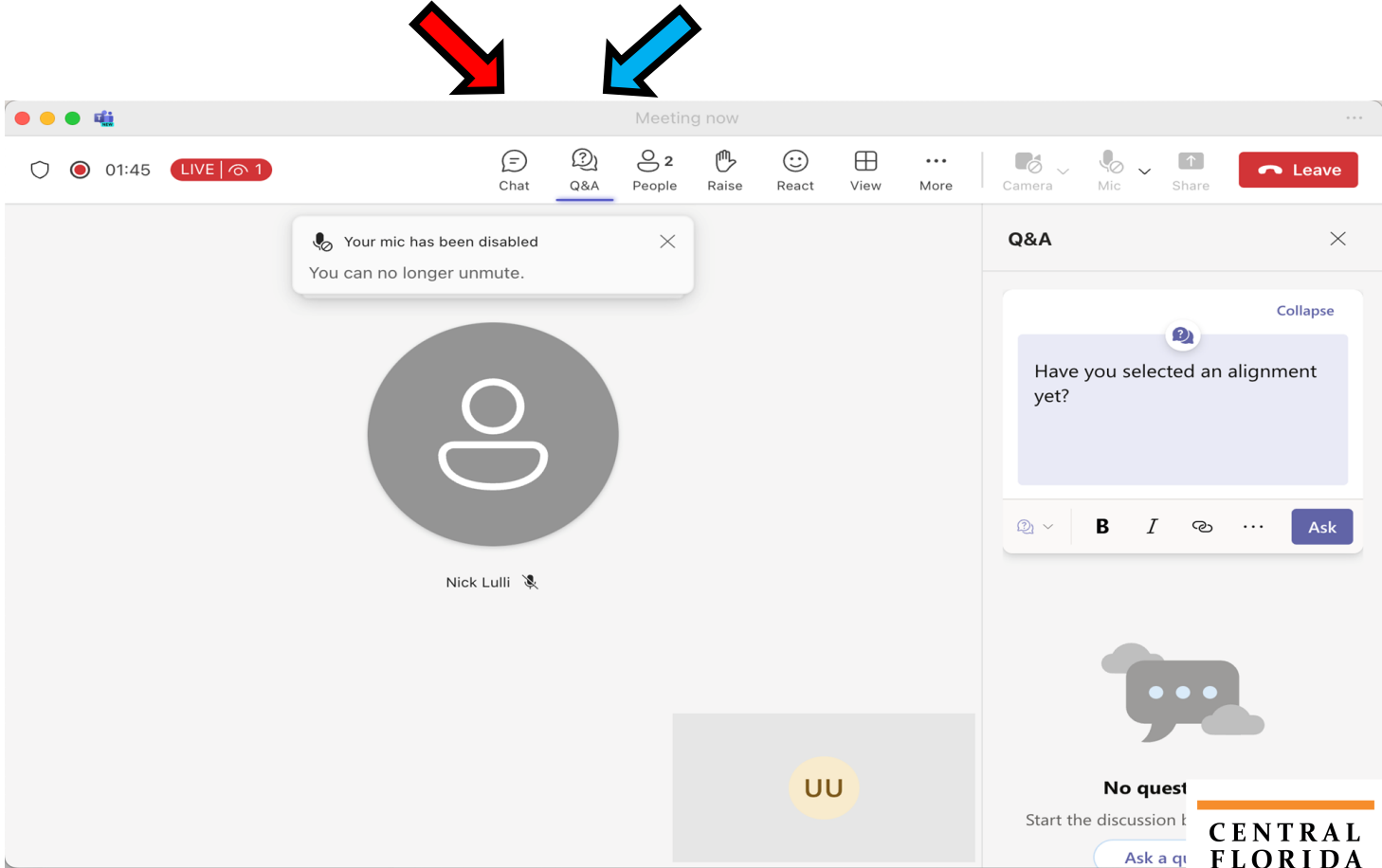


About the Meeting

Mobile



Desktop



Title VI Compliance

This meeting, project, or study is being conducted without regard to race, color, national origin, age, sex, religion, disability or family status. Persons wishing to express their concerns relative to compliance by the Central Florida Expressway Authority (CFX) with Title VI may do so by contacting:

Nick Lulli

Public Involvement Coordinator

4974 ORL Tower Road, Orlando, FL 32807

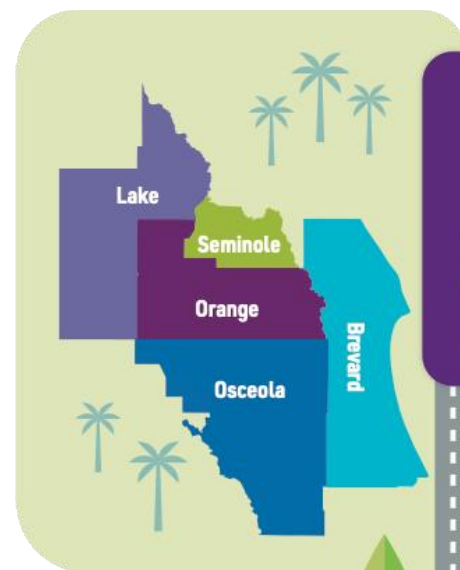
407-885-4743

ProjectStudies@CFXway.com

All inquiries or complaints will be handled according to CFX procedure and in a prompt and courteous manner.

CONNECTING COMMUNITIES AND COMMERCE

Tolls Paid Here, Stay Here.



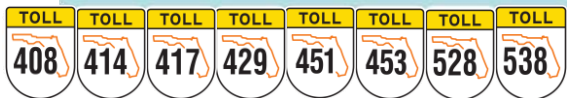
REGIONAL AGENCY SUPPORTING **5** COUNTIES

100% USER FUNDED

\$4.2 BILLION | **5 YEAR WORK PLAN**

98% OF WORK is performed by private sector for our **125 Mile** expressway system

SERVICING **3.5M** RESIDENTS AND **80M** TOURISTS



Our Governing Board



Buddy Dyer
Chairman,
Mayor of Orlando



Andria Herr
Vice Chair,
Seminole County Representative



Brandon Arrington
Treasurer,
Osceola County Representative



Katie Delaney
Brevard County Representative



Jerry Demings
Orange County Mayor



Christopher "C.J." Maier
Governor's Appointee



Rafael E. Martinez
Governor's Appointee



Christine Moore
Orange County Representative



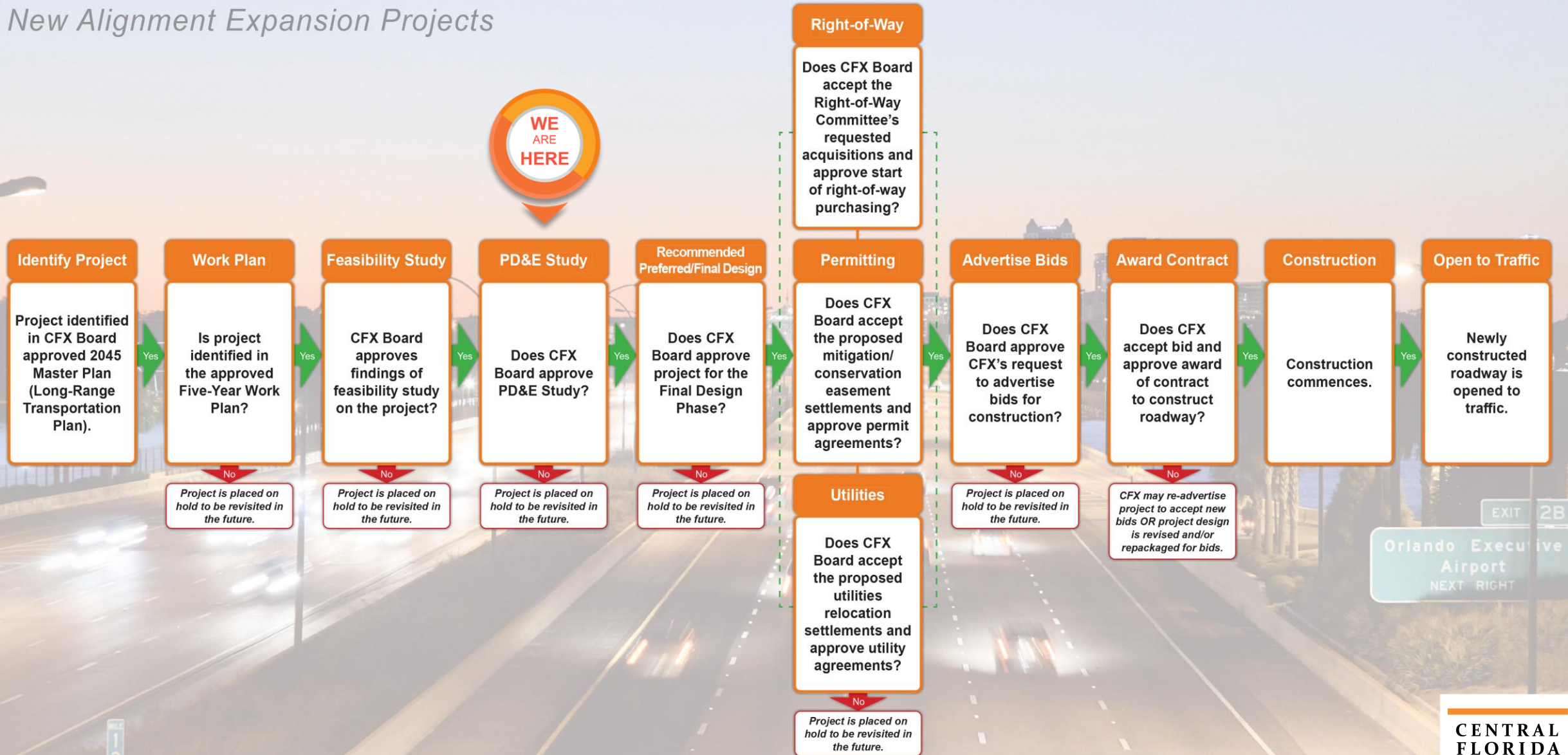
Sean Parks
Lake County Representative



Rick Pullum
Governor's Appointee

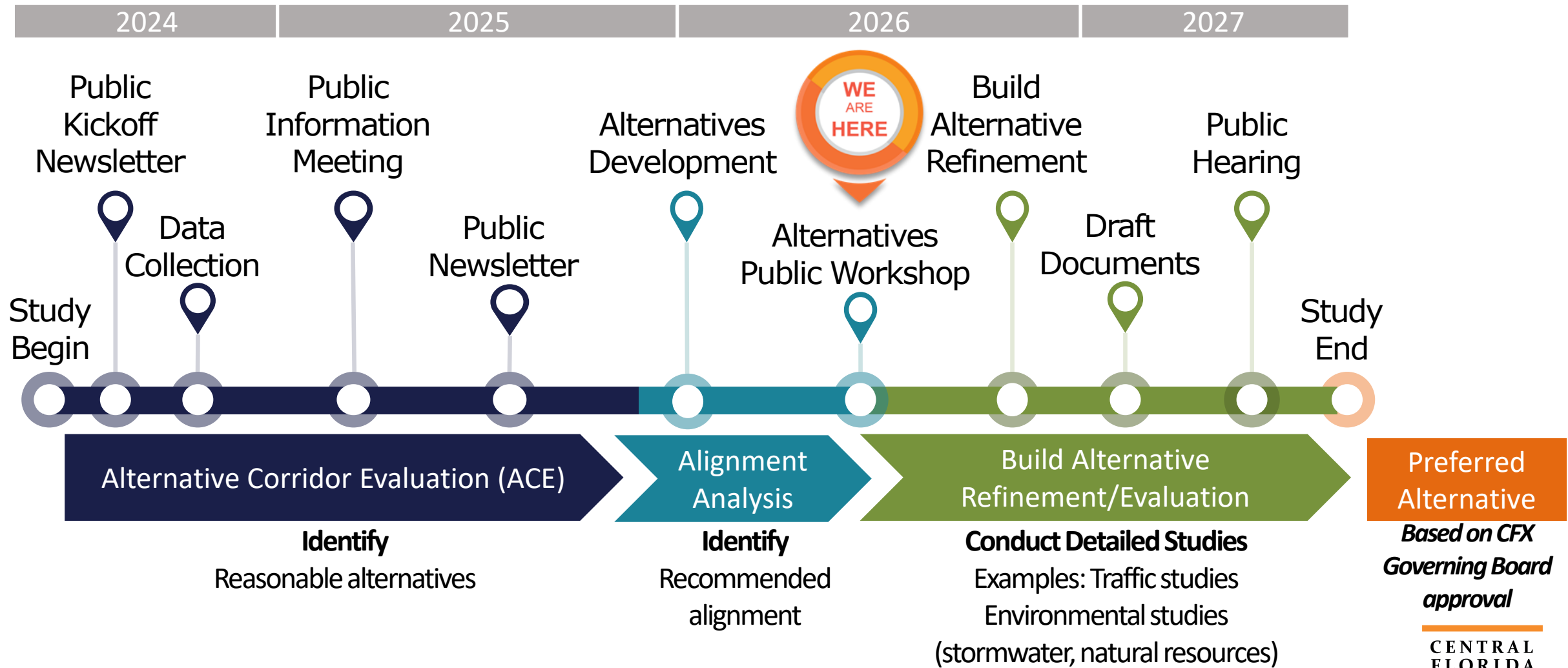
PROJECT DEVELOPMENT PROCESS

New Alignment Expansion Projects

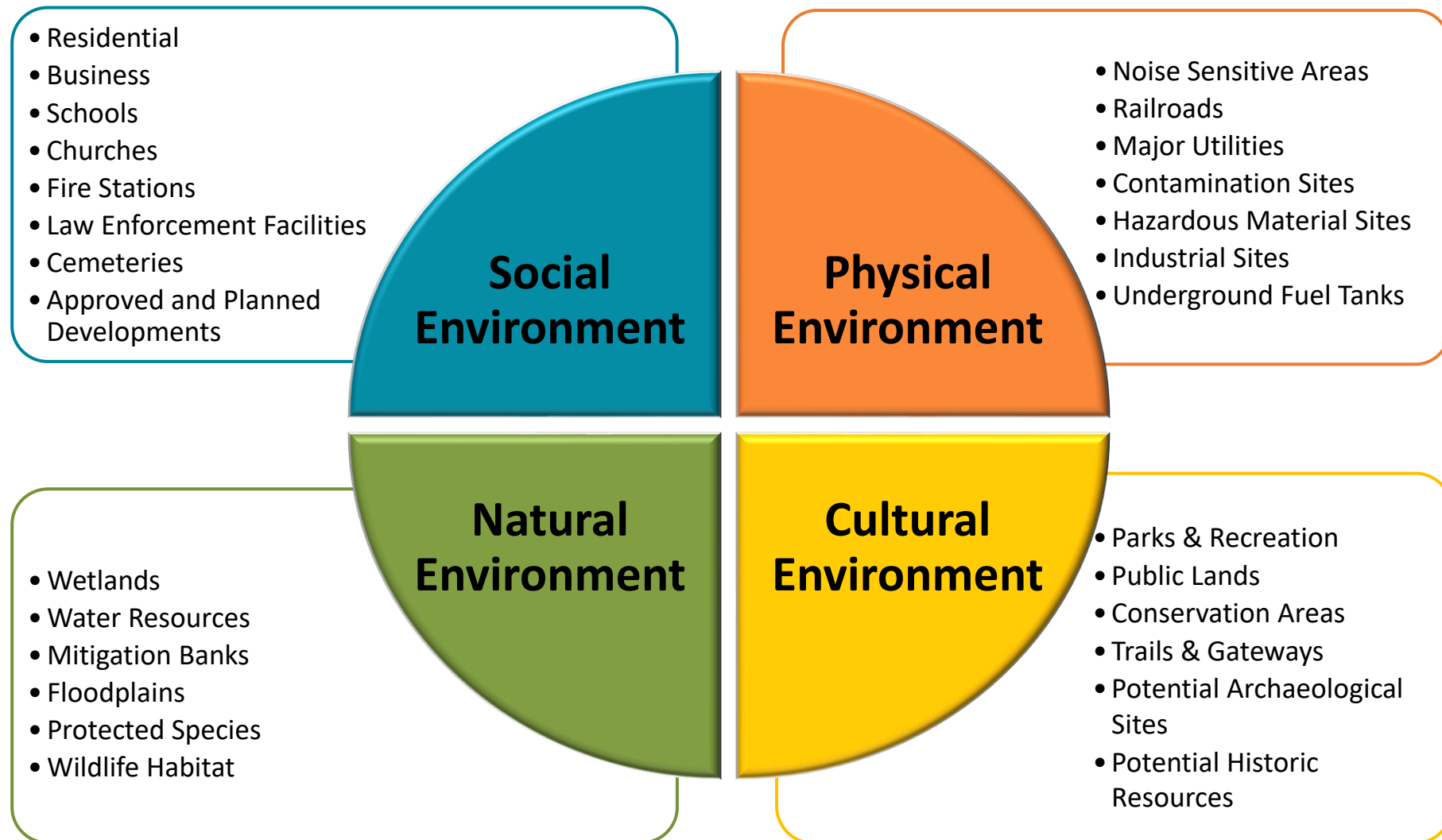


EXIT 2B
Orlando Executive Airport
NEXT RIGHT

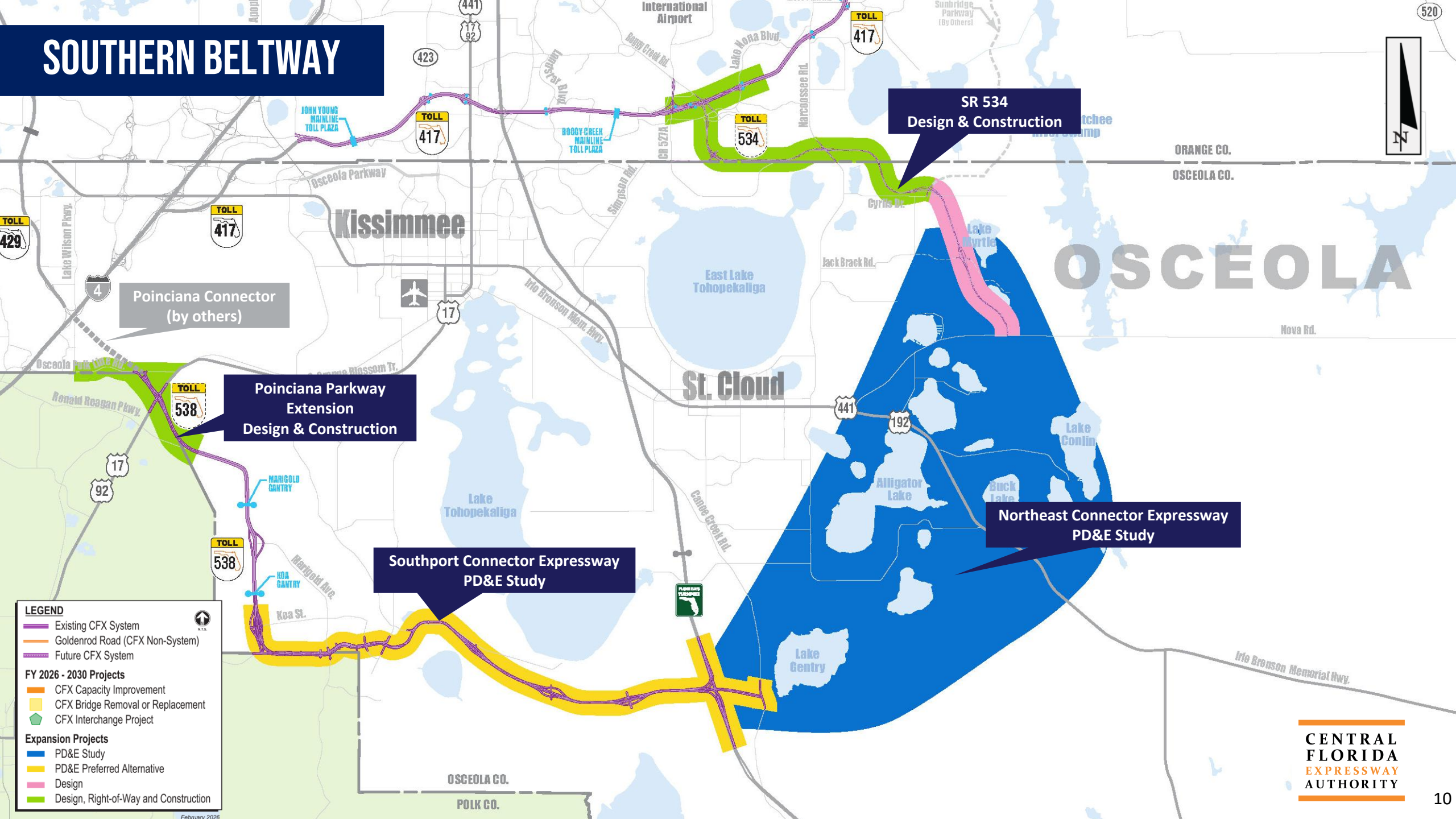
Process Slide



PD&E Evaluation Criteria



SOUTHERN BELTWAY



LEGEND

- Existing CFX System
- Goldenrod Road (CFX Non-System)
- Future CFX System

FY 2026 - 2030 Projects

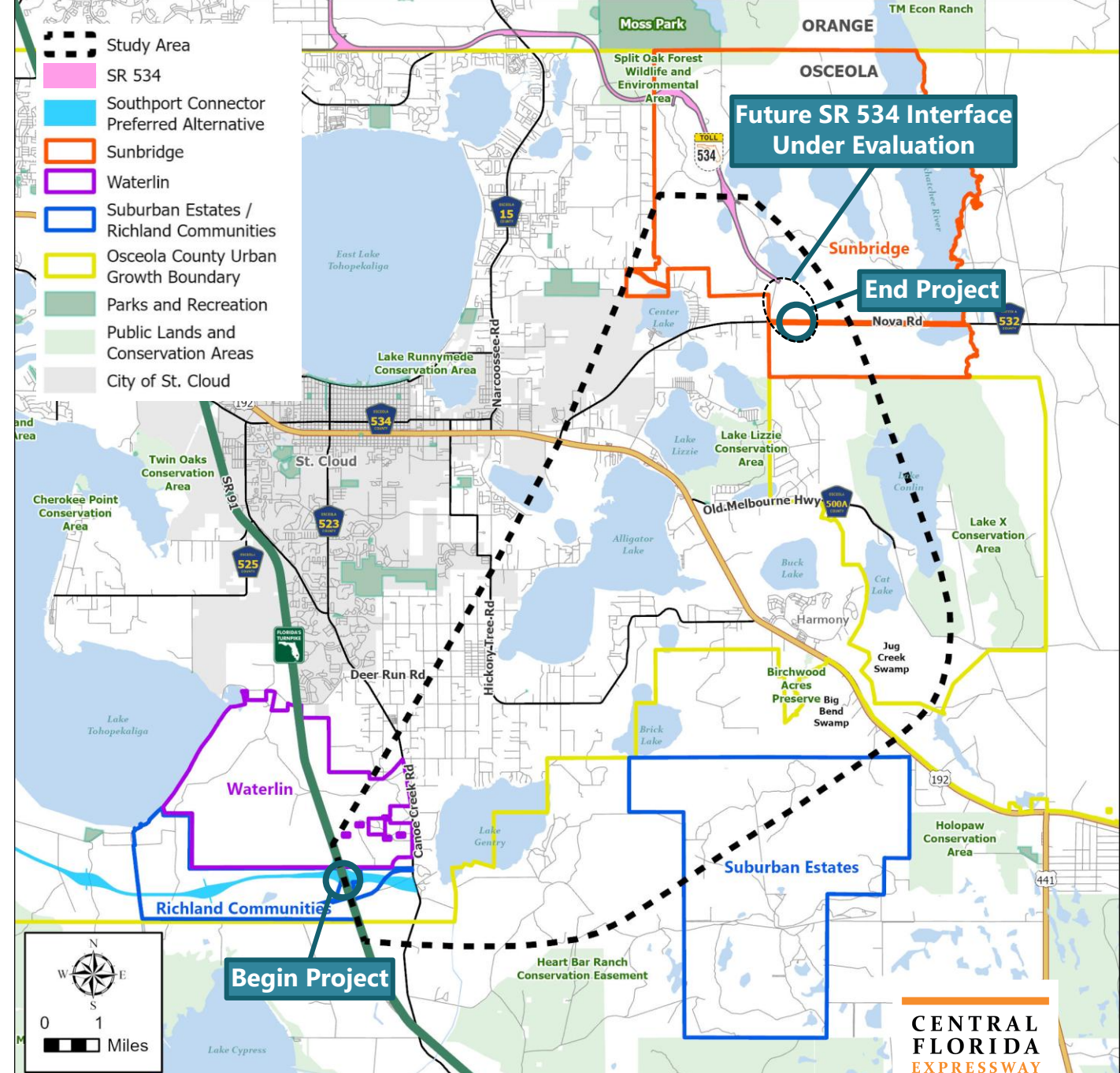
- CFX Capacity Improvement
- CFX Bridge Removal or Replacement
- CFX Interchange Project

Expansion Projects

- PD&E Study
- PD&E Preferred Alternative
- Design
- Design, Right-of-Way and Construction

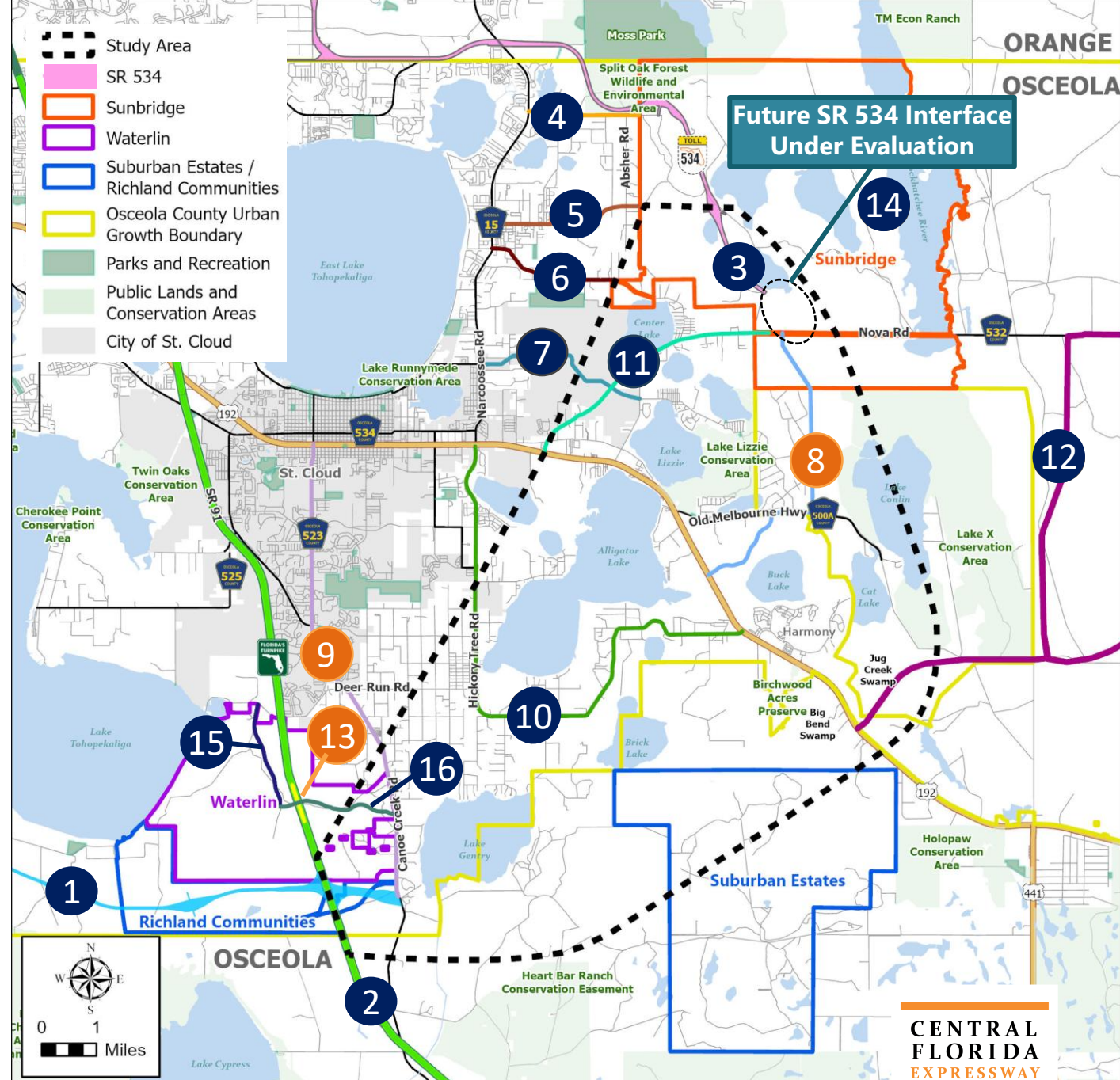
Study Area

- 15- to 20-mile expressway
- **Southwest terminus:** proposed Southport Connector Expressway/ Florida's Turnpike
- **Northern terminus:** SR 534 at Nova Road
- **Full interchange:** US 192 and Canoe Creek Road



Other Area Projects

- 1 Southport Connector Expressway new roadway
- 2 Florida's Turnpike Widening PD&E
- 3 SR 534 extension
- 4 Cyrils Drive improvements
- 5 Jack Brack Road improvements
- 6 Jones Road widening
- 7 Bass Highway/Nova Connector new roadway
- 8 Sunbridge Parkway Extension PD&E
- 9 Canoe Creek Road PD&E
- 10 Hickory Tree Road PD&E
- 11 Nova Road PD&E
- 12 Northeast Connector Expressway Extension (NECEE) CF&M
- 13 Florida's Turnpike / Waterlin interchange
- 14 Lake to Lake Regional Trail
- 15 Cross Prairie Parkway extension
- 16 Waterlin Boulevard new roadway



Purpose and Need

Osceola Transportation Southeast Area Transportation Study (SEATS):

- NEC needed by 2040

Population Growth:

- 7.5% recent annual growth
- Projected to increase by 56% by 2050

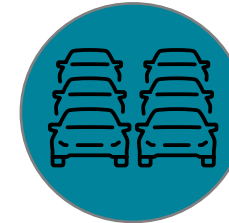
Planned Development:

- 12 Mixed-Use Districts (SEATS)
- 37 Planned Developments within the study area

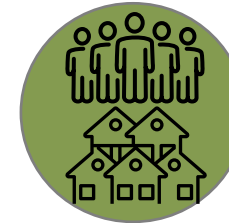
US 192 only existing east-west corridor



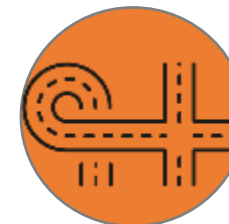
Provides System Linkage



Addresses Anticipated Future Traffic Needs

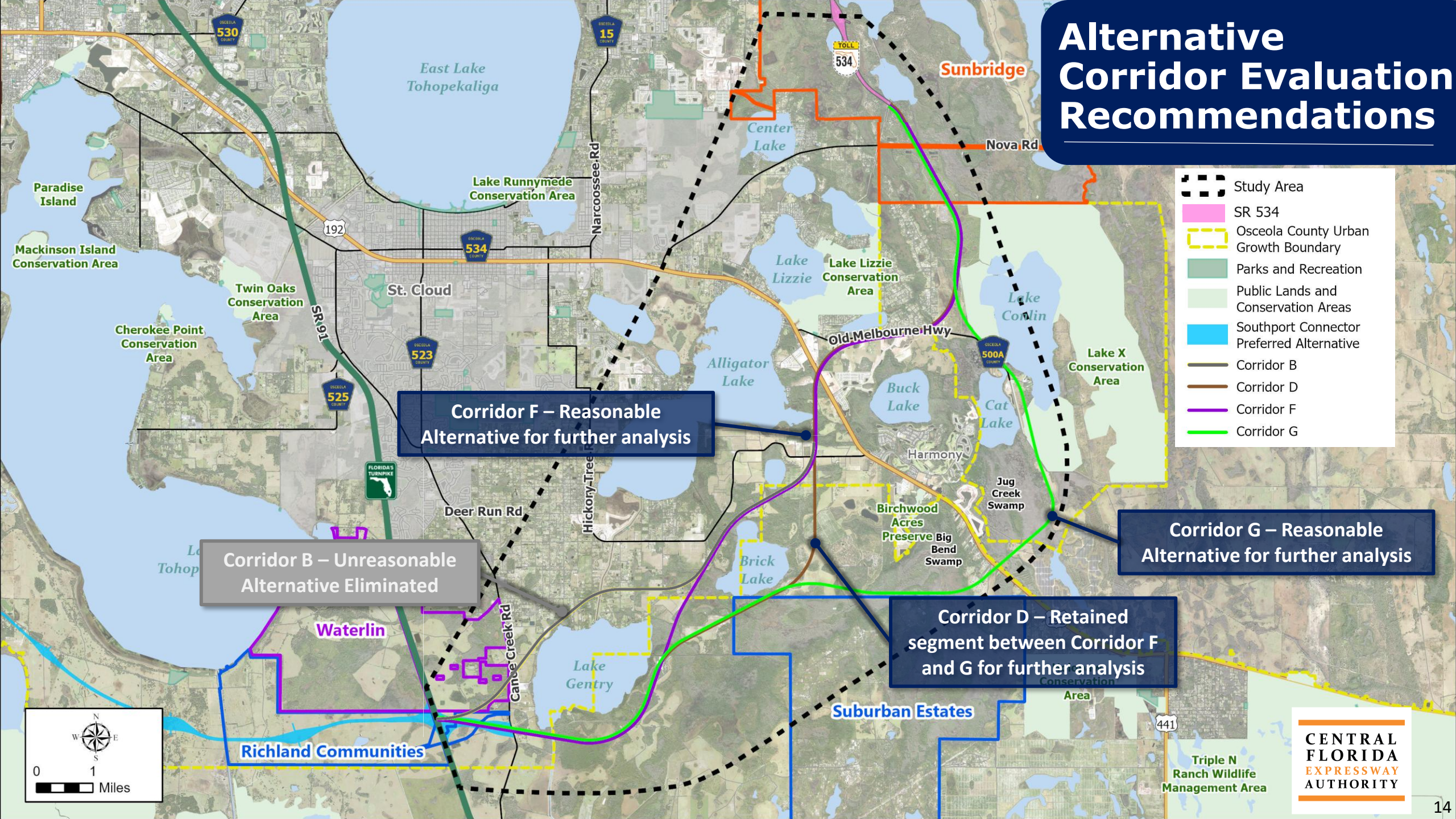


Supports Socioeconomic Growth and Planned Development



Provides Additional East-West Regional Connectivity

Alternative Corridor Evaluation Recommendations



- Study Area
- SR 534
- Osceola County Urban Growth Boundary
- Parks and Recreation
- Public Lands and Conservation Areas
- Southport Connector Preferred Alternative
- Corridor B
- Corridor D
- Corridor F
- Corridor G

Corridor F – Reasonable Alternative for further analysis

Corridor B – Unreasonable Alternative Eliminated

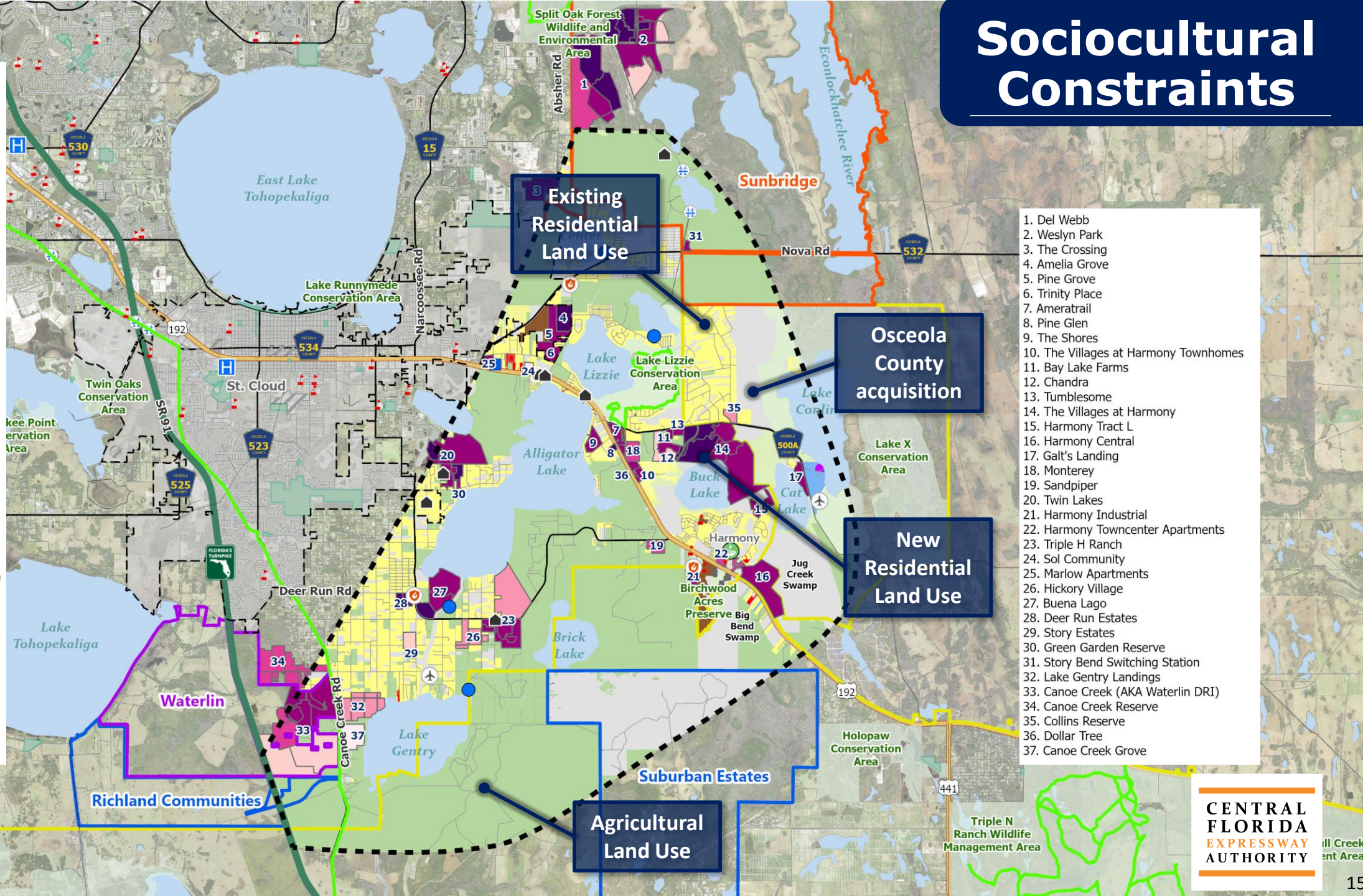
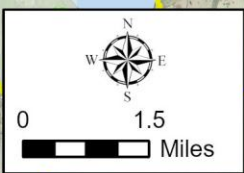
Corridor G – Reasonable Alternative for further analysis

Corridor D – Retained segment between Corridor F and G for further analysis



Sociocultural Constraints

- Study Area
- Osceola County Urban Growth Boundary
- Parks and Recreation
- Public Lands and Conservation Areas
- Trails
- Golf Course
- Boat Ramps
- Fire and Rescue Stations
- Private Airstrip
- Schools
- Hospitals
- Places of Worship
- SHPO Resources**
- Structures
- Bridges
- Resource Groups
- Planned Developments**
- Sites in PS Approval Stage
- Sites with PS Permit
- Sites Pending SDP Permit
- Sites with SDP Permits
- Sites Under Construction
- Recently Completed Construction
- Existing Land Use (November 2025)**
- Residential
- Commercial
- Agricultural
- Conservation
- Governmental
- Industrial
- Institutional
- Utilities and Rights-of-Way
- Undeveloped



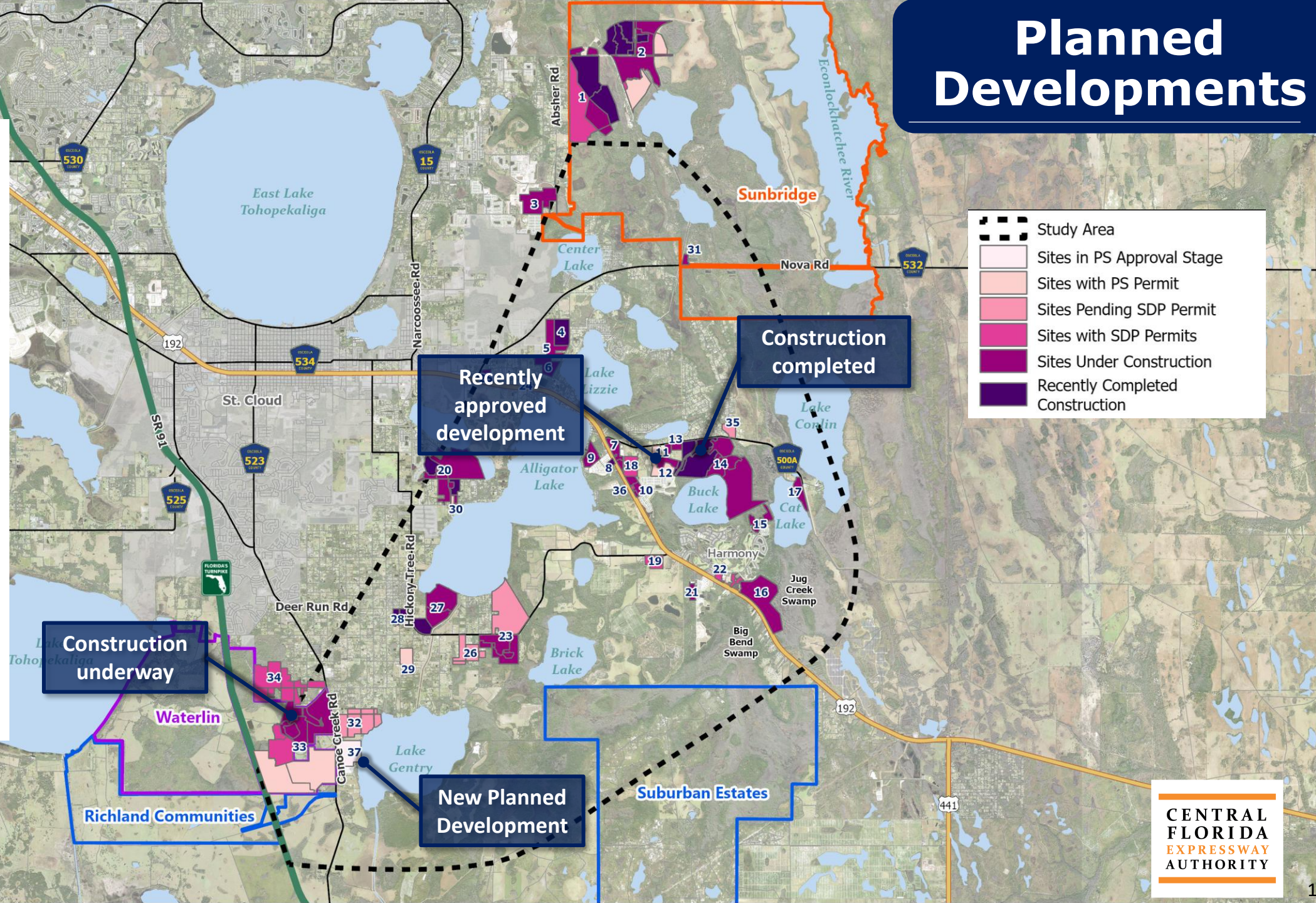
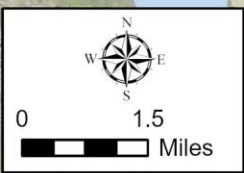
1. Del Webb
2. Weslyn Park
3. The Crossing
4. Amelia Grove
5. Pine Grove
6. Trinity Place
7. Ameratrail
8. Pine Glen
9. The Shores
10. The Villages at Harmony Townhomes
11. Bay Lake Farms
12. Chandra
13. Tumblesome
14. The Villages at Harmony
15. Harmony Tract L
16. Harmony Central
17. Galt's Landing
18. Monterey
19. Sandpiper
20. Twin Lakes
21. Harmony Industrial
22. Harmony Towncenter Apartments
23. Triple H Ranch
24. Sol Community
25. Marlow Apartments
26. Hickory Village
27. Buena Lago
28. Deer Run Estates
29. Story Estates
30. Green Garden Reserve
31. Story Bend Switching Station
32. Lake Gentry Landings
33. Canoe Creek (AKA Waterlin DRI)
34. Canoe Creek Reserve
35. Collins Reserve
36. Dollar Tree
37. Canoe Creek Grove

Planned Developments


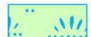

1. Del Webb
2. Weslyn Park
3. The Crossing
4. Amelia Grove
5. Pine Grove
6. Trinity Place
7. Ameratrail
8. Pine Glen
9. The Shores
10. The Villages at Harmony Townhomes
11. Bay Lake Farms
12. Chandra
13. Tumblesome
14. The Villages at Harmony
15. Harmony Tract L
16. Harmony Central
17. Galt's Landing
18. Monterey
19. Sandpiper
20. Twin Lakes
21. Harmony Industrial
22. Harmony Towncenter Apartments
23. Triple H Ranch
24. Sol Community
25. Marlow Apartments
26. Hickory Village
27. Buena Lago
28. Deer Run Estates
29. Story Estates
30. Green Garden Reserve
31. Story Bend Switching Station
32. Lake Gentry Landings
33. Canoe Creek (AKA Waterlin DRI)
34. Canoe Creek Reserve
35. Collins Reserve
36. Dollar Tree
37. Canoe Creek Grove

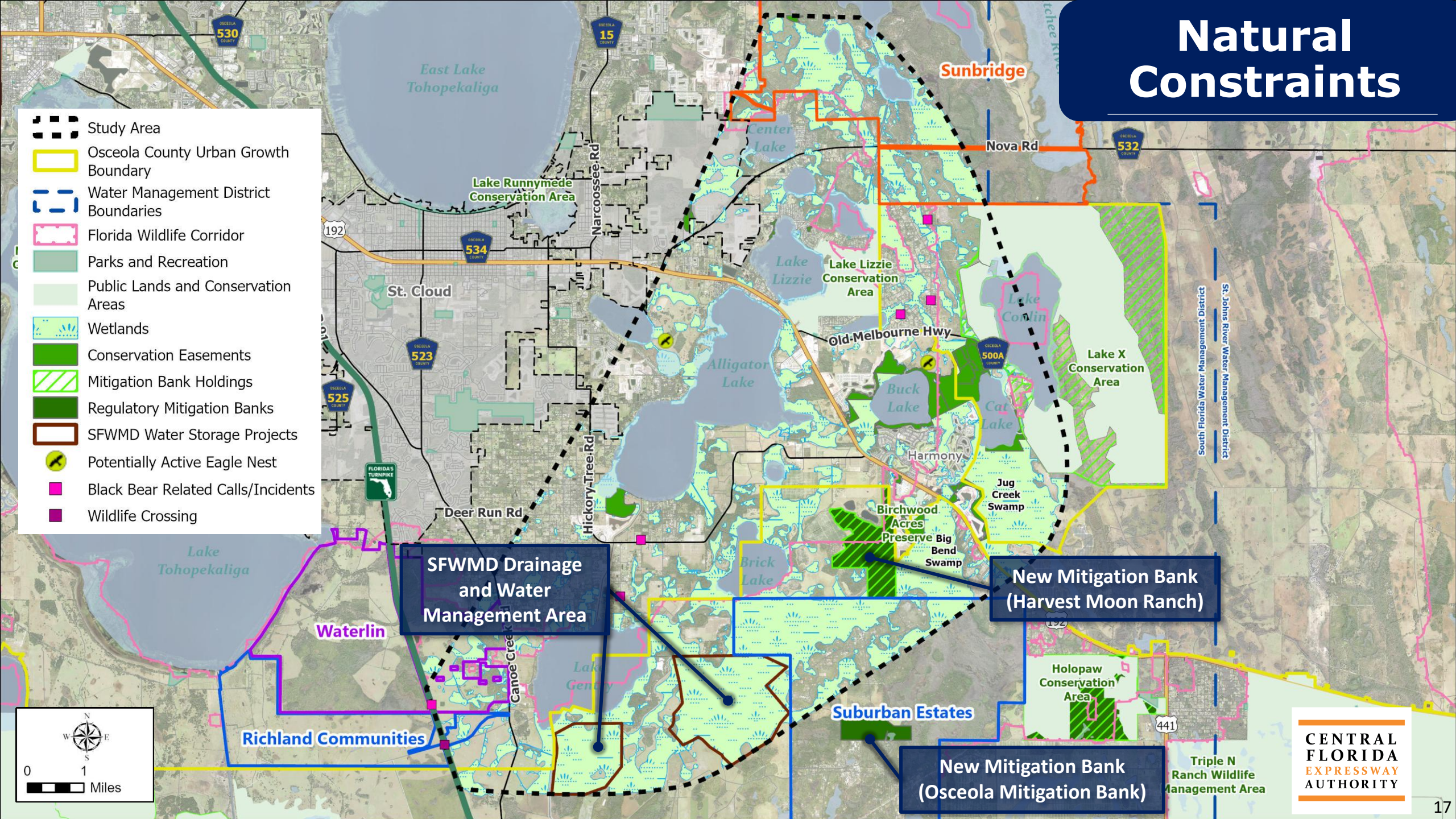
Study Area

- Study Area
- Sites in PS Approval Stage
- Sites with PS Permit
- Sites Pending SDP Permit
- Sites with SDP Permits
- Sites Under Construction
- Recently Completed Construction



Natural Constraints

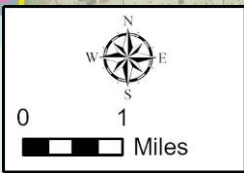
-  Study Area
-  Osceola County Urban Growth Boundary
-  Water Management District Boundaries
-  Florida Wildlife Corridor
-  Parks and Recreation
-  Public Lands and Conservation Areas
-  Wetlands
-  Conservation Easements
-  Mitigation Bank Holdings
-  Regulatory Mitigation Banks
-  SFWMD Water Storage Projects
-  Potentially Active Eagle Nest
-  Black Bear Related Calls/Incidents
-  Wildlife Crossing



SFWMD Drainage and Water Management Area

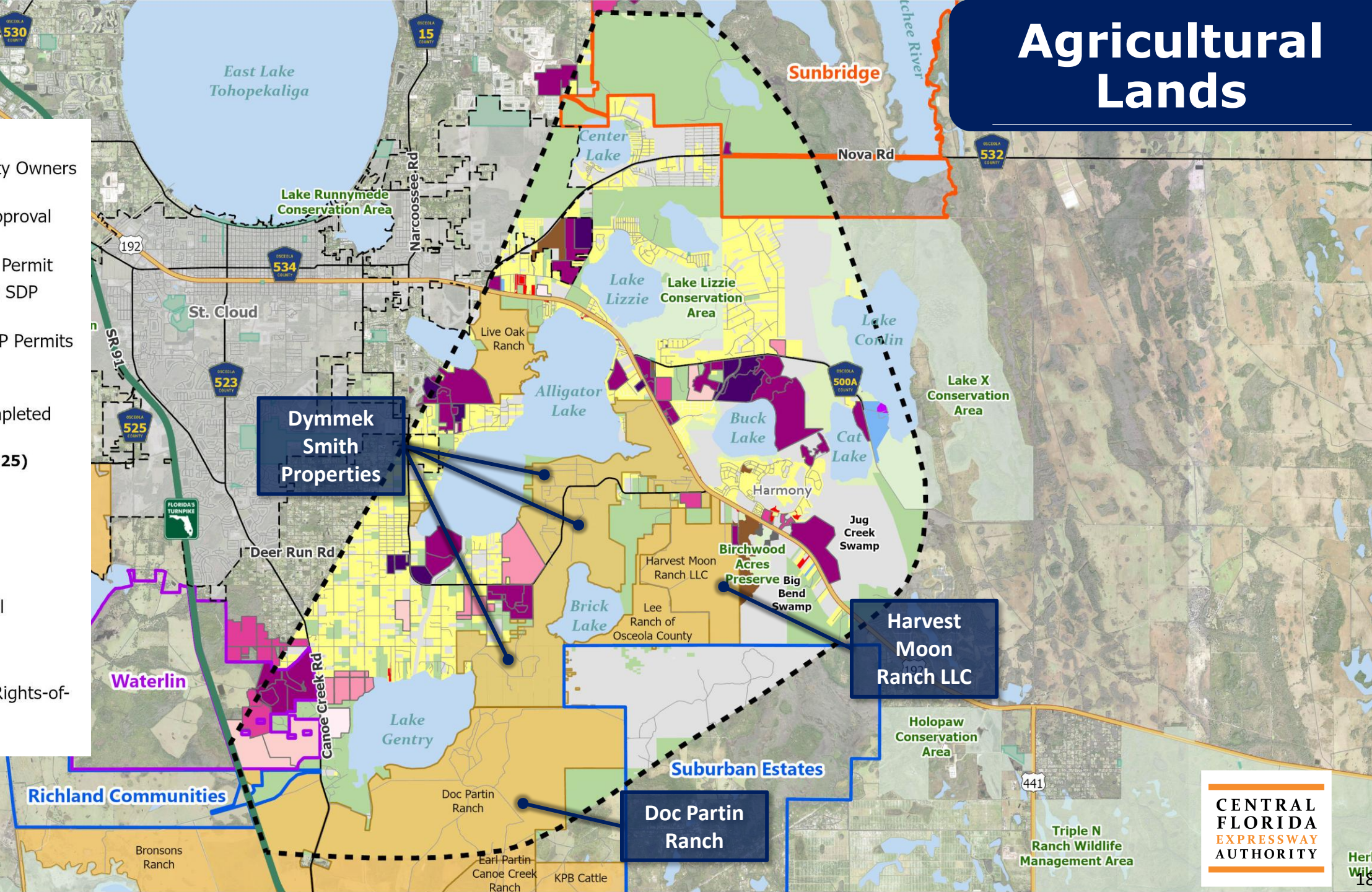
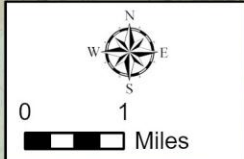
New Mitigation Bank (Harvest Moon Ranch)

New Mitigation Bank (Osceola Mitigation Bank)

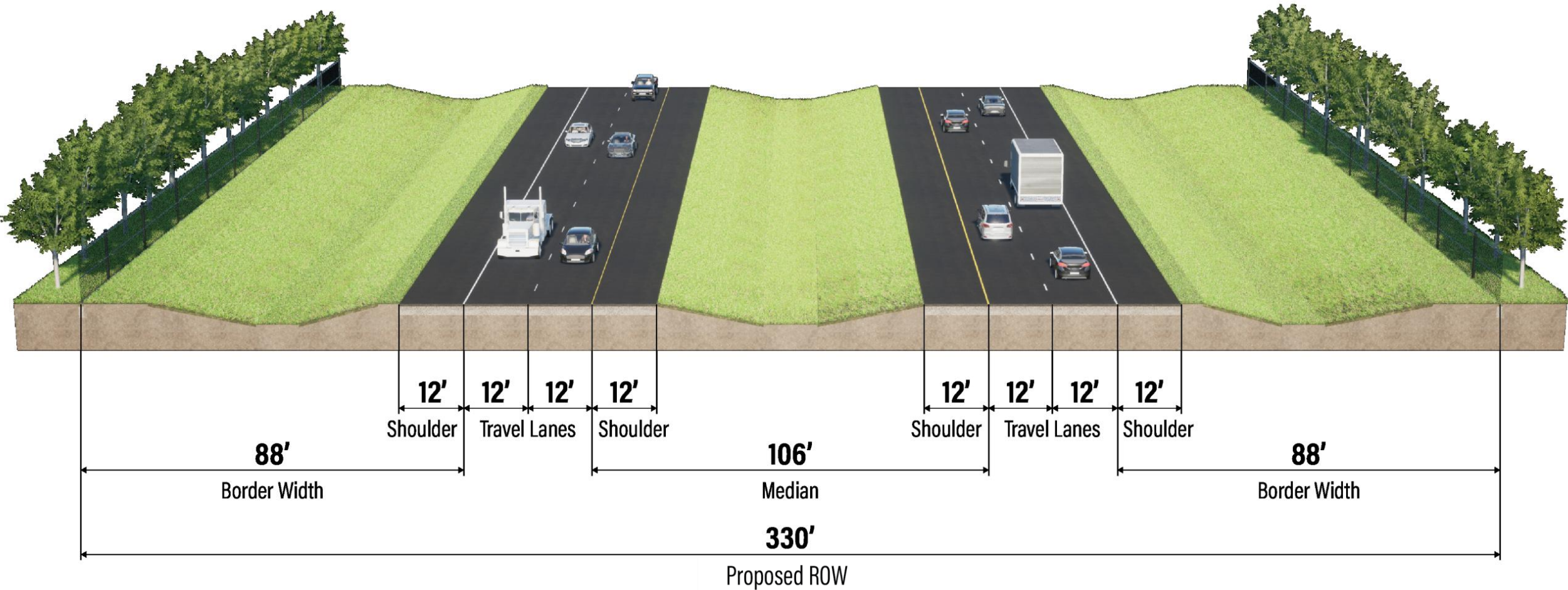


Agricultural Lands

-  Study Area
-  Large Property Owners and Ranches
-  Sites in PS Approval Stage
-  Sites with PS Permit
-  Sites Pending SDP Permit
-  Sites with SDP Permits
-  Sites Under Construction
-  Recently Completed Construction
- Existing Land Use (2025)**
-  Residential
-  Commercial
-  Agricultural
-  Conservation
-  Governmental
-  Industrial
-  Institutional
-  Utilities and Rights-of-Way
-  Undeveloped

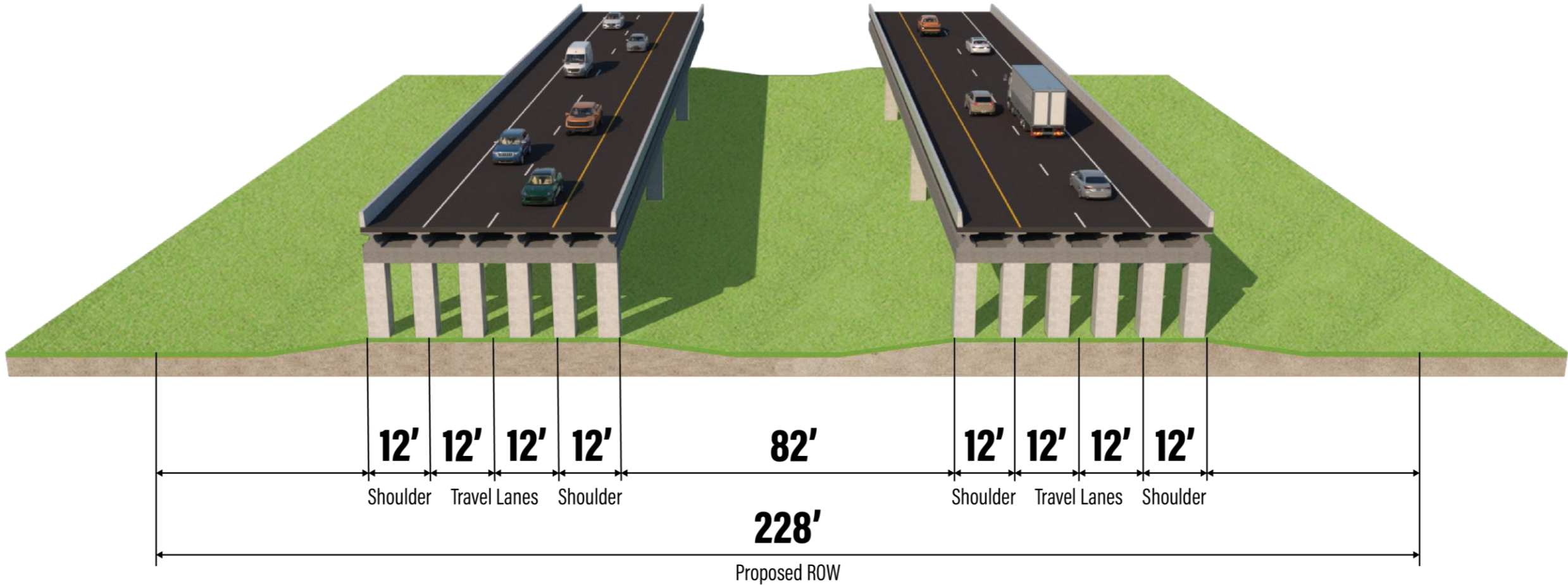


Mainline Typical Section



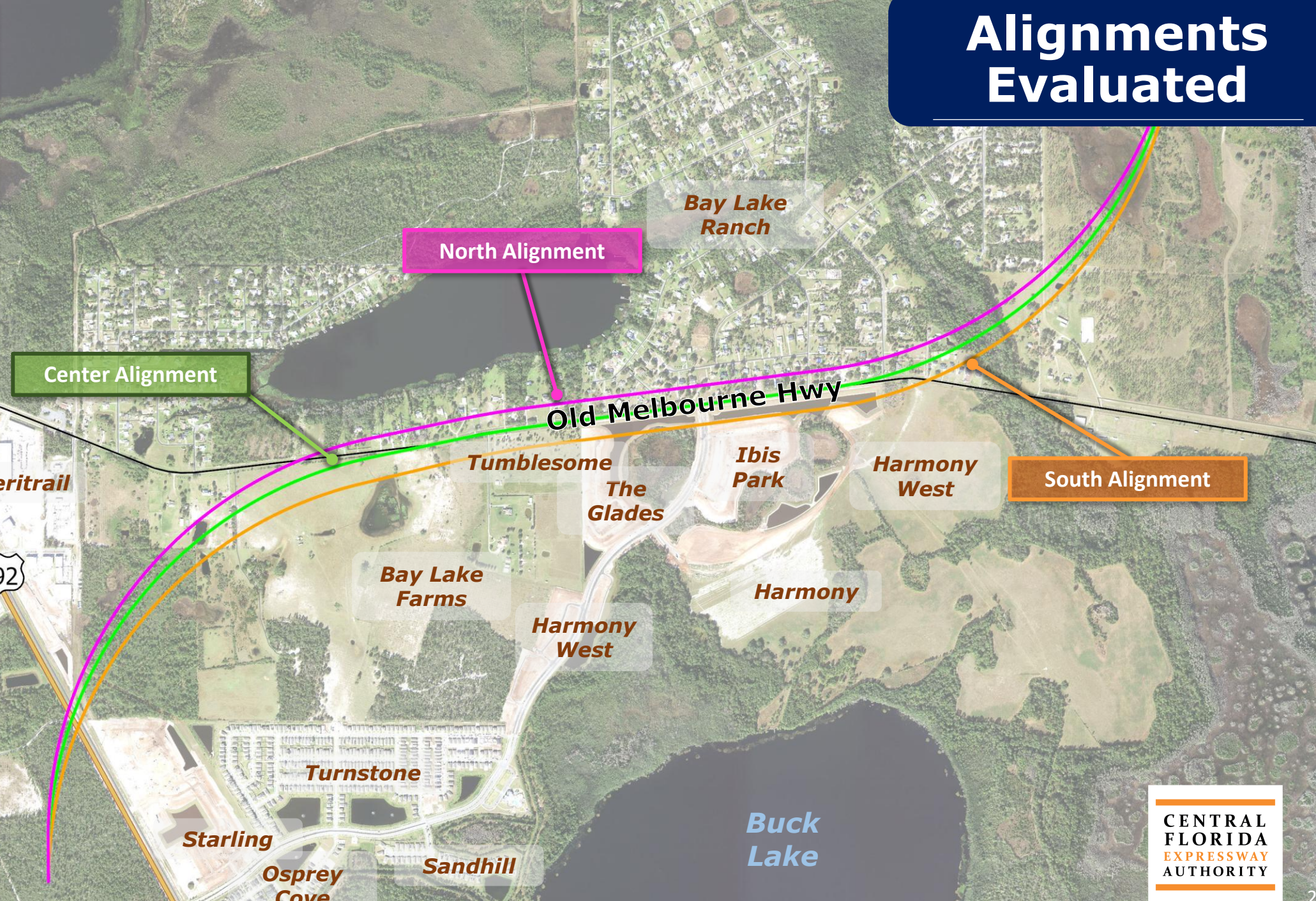
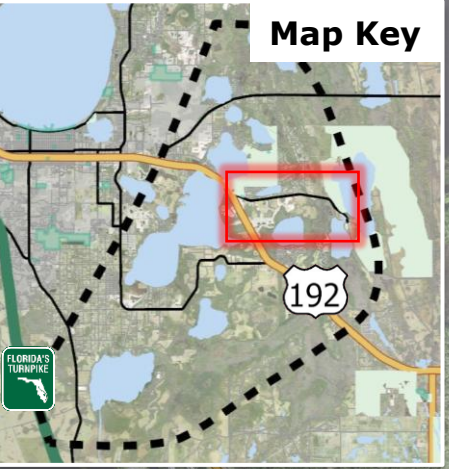
Right-of-Way (ROW)

Bridge Typical Section

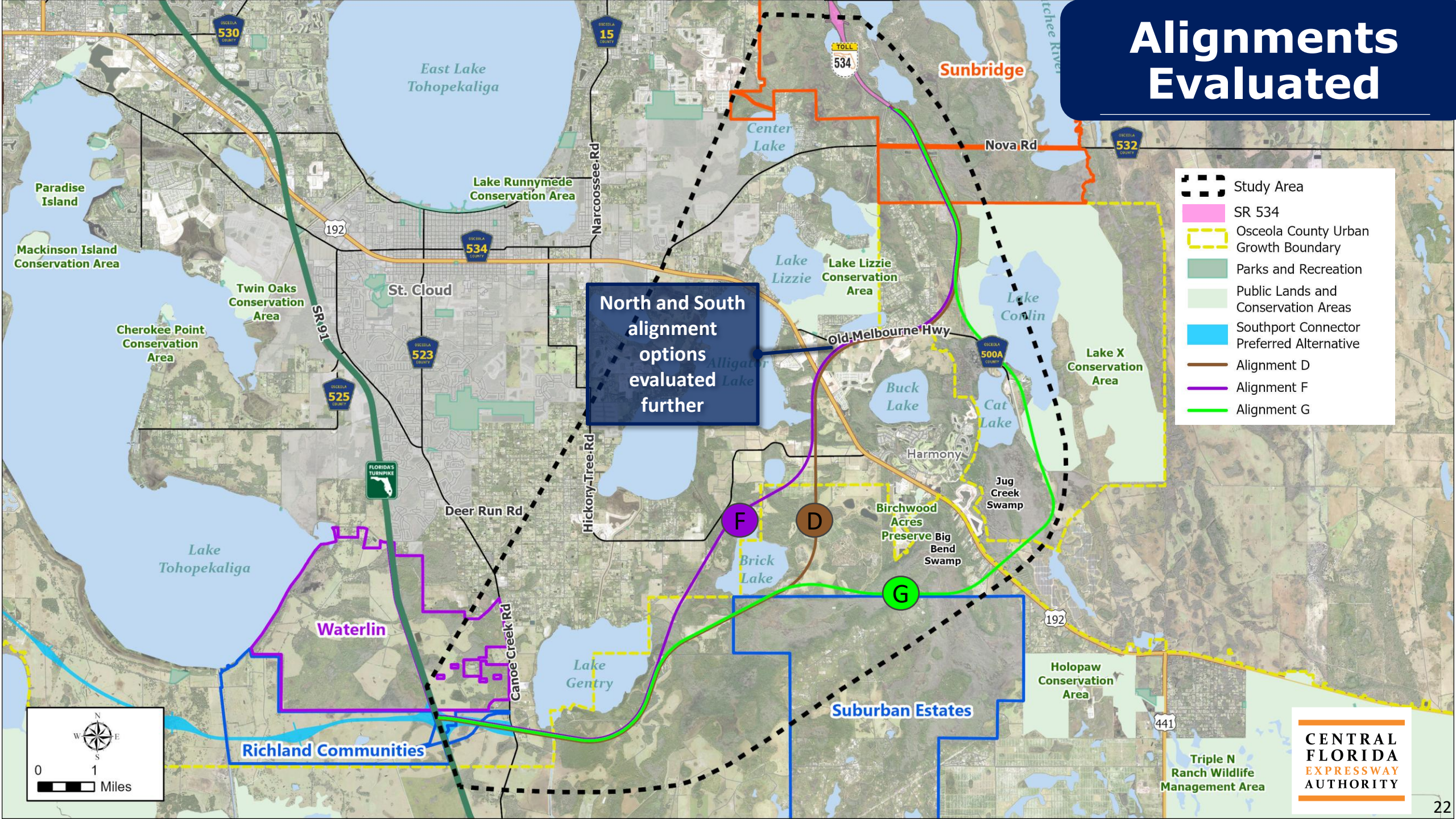


Right-of-Way (ROW)

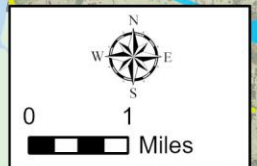
Alignments Evaluated



Alignments Evaluated



- Study Area
- SR 534
- Osceola County Urban Growth Boundary
- Parks and Recreation
- Public Lands and Conservation Areas
- Southport Connector Preferred Alternative
- Alignment D
- Alignment F
- Alignment G



Alignment Alternative Evaluation Matrix

Evaluation Measure	Unit of Measure	Alignment D1 (southern OMH ¹⁴)	Alignment D2 (northern OMH ¹⁴)	Alignment F1 (southern OMH ¹⁴)	Alignment F2 (northern OMH ¹⁴)	Alignment G
Design						
Corridor Length	Miles	17.1	17.1	16.6	16.7	19.8
Proposed ROW width	Feet	330	330	330	330	330
Proposed ROW total (approximate)	Acres	1,102	1,127	1,084	1,109	1,152
Proposed bridge crossings (roadway/canal/environmental crossings) ¹	Number of Crossings	29	31	30	32	28
Total length of all crossings (roadway/canal/environmental crossings) ¹	Feet	20,551	15,866	20,941	16,305	17,899
<i>Roadway/Canal Crossings</i>	Feet	15,244	10,498	16,660	11,963	9,745
<i>Environmental Crossings</i>	Feet	5,307	5,368	4,281	4,342	8,154
Proposed interchanges	Number	4	4	4	4	4
Projected 2050 AADT Volume ²	Number of Vehicles per Day	22,100-46,400	22,100-46,400	32,000-48,200	32,000-48,200	21,500-43,500
US 192 Interchange Access Management Compatibility (low/med/high)	Low/Medium/High	High	High	High	High	Low
Physical						
Major Utility Conflicts - Existing	Number of Conflicts	3	3	3	3	2
Contamination Sites (Medium and High Risk Sites)	Number of Conflicts	8	8	8	8	3
Cultural Environment						
Public Recreation Lands	Acres	0	0	0	0	0
Potential Historic Resources	Number of Conflicts	0	0	0	0	0
Potential Historic Linear Resources (Canals/Highways/Railroads)	Number of Resources	1	1	1	1	1
Potential Archaeological Resources	Number of Resources	0	0	0	0	0
Natural Environment						
Floodplain Involvement - 100 Year Floodplain ³	Acres	390	390	438	438	667
Canals / Regulated Floodways ⁴	Number of Conflicts	1	1	2	2	1
Wetlands (non-forested and forested) ⁵	Acres	269	275	246	251	436
Potential Species Habitat ⁶	Acres	1,008	1,013	985	991	1,107
Conservation Lands ⁷	Acres	0	0	0	0	71
Regulatory Conservation Easement	Acres	0	0	0	0	0
Florida Wildlife Corridor ⁸	Acres	764	761	668	665	1047
Florida Forever Priority Projects (Planned) ⁹	Acres	337	334	242	239	509
SFWMD DWMP (Watershed Management Program)	Acres	49	49	49	49	49
Social						
Residential Parcels - Existing						
Potential Residential Parcels Affected ^{9,10,12}	Number of Parcels	136	82	137	83	4
<i>Residential Homes</i>	Number of Parcels	121	71	121	71	4
<i>Residential Stormwater and Common Areas</i>	Number of Parcels	15	11	16	12	0
Potential Residential Parcels Affected ^{9,10,12}	Acres	45	67	51	73	8
<i>Residential Homes</i>	Acres	20	57	20	57	8
<i>Residential Stormwater and Common Areas</i>	Acres	25	10	31	16	0
Residential Parcels - Planned						
Potential Residential Parcels Affected ^{9,13}	Number of Parcels	181	161	181	161	31
Potential Residential Parcels Affected ^{9,13}	Acres	47	44	47	44	8
Non-Residential Parcels						
Total Potential Non-Residential Parcels Affected ^{9,11}	Number of Parcels	7	14	7	14	14
Community Cohesion Effects - Existing/Planned Neighborhoods Affected	Low/Medium/High	High	High	High	High	Low
Community Facilities	Number of Conflicts	0	0	0	0	0
Agricultural Lands	Acres	847	849	849	849	818
Suburban Estates Impacts (approximate)	Acres	28	28	0	0	28
Preliminary Estimated Cost						
Total Construction Cost	Currency (in millions)	\$1,945	\$1,820	\$1,970	\$1,840	\$2,020
Preliminary Right-of-Way Cost	Currency (in millions)	\$230	\$260	\$230	\$260	\$80
Estimated Total Project Cost	Currency (in millions)	\$2,175	\$2,080	\$2,200	\$2,100	\$2,100

Alignment Alternative Evaluation Matrix

Evaluation Measure	Unit of Measure	Alignment D1 (South)	Alignment D2 (North)	Alignment F1 (South)	Alignment F2 (North)	Alignment G
Design						
Corridor Length	Miles	17.1	17.1	16.6	16.7	19.8
Proposed ROW width	Feet	330	330	330	330	330
Proposed ROW total (approximate)	Acres	1,102	1,127	1,084	1,109	1,152
Proposed bridge crossings (roadway/canal/environmental crossings) ¹	Number of Crossings	29	31	30	32	28
Total length of all crossings (roadway/canal/environmental crossings) ¹	Feet	20,551	15,866	20,941	16,305	17,899
Roadway/Canal Crossings	Feet	15,244	10,498	16,660	11,963	9,745
Environmental Crossings	Feet	5,307	5,368	4,281	4,342	8,154
Proposed interchanges	Number	4	4	4	4	4
Projected 2050 AADT Volume ²	Number of Vehicles per Day	22,100-46,400	22,100-46,400	32,000-48,200	32,000-48,200	21,500-43,500
US 192 Impacts to Signal Spacing	Low/Medium/High	High	High	High	High	Low

Notes:

- Roadway/Canal crossings include ramp bridges. Bridge length is based on longest span per location. Environmental crossings are based on corridor length (not length of multiple spans) and are subject to change.
- AADT values represent range from Canoe Creek Road to Nova Road.

Alignment Alternative Evaluation Matrix

Evaluation Measure	Unit of Measure	Alignment D1 (South)	Alignment D2 (North)	Alignment F1 (South)	Alignment F2 (North)	Alignment G
Physical						
Major Utility Conflicts – Existing	Number	3	3	3	3	2
Contamination Sites (Medium and High Risk)	Number	8	8	8	8	3
Cultural Environment						
Public Recreation Lands	Acres	0	0	0	0	0
Potential Historic Resources	Number	0	0	0	0	0
Potential Historic Linear Resources (Canals/Highways/Roadways)	Number	1	1	1	1	1
Potential Archaeological Resources	Number	0	0	0	0	0

Alignment Alternative Evaluation Matrix

Evaluation Measure	Unit of Measure	Alignment D1 (South)	Alignment D2 (North)	Alignment F1 (South)	Alignment F2 (North)	Alignment G
Natural Environment						
Floodplain Involvement – 100 Year ³	Acres	390	390	438	438	667
Canals/Regulated Floodways ⁴	Number of crossings	1	1	2	2	1
Wetlands (non-forested and forested) ⁵	Acres	269	275	246	251	436
Potential Species Habitat ⁶	Acres	1,008	1,013	985	991	1,107
Conservation Lands ⁷	Acres	0	0	0	0	71
Regulatory Conservation Easements	Acres	0	0	0	0	0
Florida Wildlife Corridor ⁸	Acres	764	761	668	665	1,047
Florida Forever Priority Projects (Planned) ⁸	Acres	337	334	242	239	509
SFWMD DWMP (Watershed Management Program)	Acres	49	49	49	49	49

Notes:

3. Floodplain involvement based on GIS data only and doesn't include minimization efforts to reduce direct ROW impacts.
4. Number of conflicts are identified, however bridges are assumed for all crossings.
5. Wetland values based on FLUCCS and limited review of permits. No wetland survey was conducted. Wetland impacts do not include minimization efforts to reduce direct ROW impacts.
6. Limited observation data available due to undeveloped nature of the study area. Species habitat identified based on FLUCCS and typical habitat for gopher tortoise, caracara, snail kite, grasshopper sparrow, scrub jay, red cockaded woodpecker, eagle nest, Florida panther, and black bear. Telemetry data indicates the presence of the Florida panther, 2,100 feet west of the Florida's Turnpike; however, the panther is absent within all of the corridors. Additionally, the corridors are not within the focus area which includes the primary and secondary zones. Black bear are "occasional" throughout the corridors and not within the primary range of the black bear.
7. Lake X Conservation Area which is also within a mitigation bank.
8. Values do not include overlap areas designated as mitigation bank.

Alignment Alternative Evaluation Matrix

Evaluation Measure	Unit of Measure	Alignment D1 (South)	Alignment D2 (North)	Alignment F1 (South)	Alignment F2 (North)	Alignment G
Social						
Residential Parcels – Existing						
Potential Residential Parcels Affected ^{9,10,12}	Number	136	82	137	83	4
Residential Homes	Number	121	71	121	71	4
Residential Stormwater and Common Areas	Number	15	11	16	12	0
Potential Residential Parcels Affected ^{9,10,12}	Acres	45	67	51	73	8
Residential Homes	Acres	20	57	20	57	8
Residential Stormwater and Common Areas	Acres	25	10	31	16	0
Residential Parcels – Planned						
Potential Residential Parcels Affected ^{9,13}	Number	181	161	181	161	31
Potential Residential Parcels Affected ^{9,13}	Acres	47	44	47	44	8
Non-Residential Parcels						
Total Potential Non-Residential Parcels Affected ^{9,11}	Number	7	14	7	14	14
Community Cohesion Effects – Existing/Planned	Low/Med/High	High	High	High	High	Low
Community Facilities Conflicts	Number	0	0	0	0	0
Agricultural Lands	Acres	847	849	849	849	818
Suburban Estates Impacts	Acres	28	28	0	0	28

Notes:

- 9. Includes partially impacted parcels.
- 10. Includes vacant parcels/common areas within existing residential communities.
- 11. Does not include Suburban Estates or agricultural lands.
- 12. Includes planned developments under construction.
- 13. Includes planned developments with pending or approved Site Development Plan permits. Parcel count is based on subdivided parcels at the time of analysis.

Alignment Alternative Evaluation Matrix

Evaluation Measure	Unit of Measure	Alignment D1 (South)	Alignment D2 (North)	Alignment F1 (South)	Alignment F2 (North)	Alignment G
Preliminary Estimated Cost						
Total Construction Cost	in millions	\$1,945	\$1,820	\$1,970	\$1,840	\$2,020
Preliminary Right-of-Way Cost	in millions	\$230	\$260	\$230	\$260	\$80
Estimated Total Project Cost	in millions	\$2,175	\$2,080	\$2,200	\$2,100	\$2,100

Alignment Alternatives Evaluation Matrix

- **Design Characteristics:**
 - Alignments D and F require more bridges
 - Alignment G includes over 8,000 feet of environmental bridges
 - Alignment G best supports US 192 signal spacing
- **Physical:** Alignments D and F involve higher contamination impacts
- **Cultural:** Similar for the alternatives
- **Natural:** Alignment G has higher impacts
- **Social:** Alignments D and F have significant residential impacts; impact 71-121 existing homes and 161-181 planned residential parcels
- **Total costs:** Similar range of \$2.1-\$2.2 Billion

Evaluation Measure	Unit of Measure	Alignment D1 (southern OMH ¹⁴)	Alignment D2 (northern OMH ¹⁴)	Alignment F1 (southern OMH ¹⁴)	Alignment F2 (northern OMH ¹⁴)	Alignment G
Design						
Corridor Length	Miles	17.1	17.1	16.6	16.7	19.8
Proposed ROW width	Feet	330	330	330	330	330
Proposed ROW total (approximate)	Acres	1,102	1,127	1,084	1,109	1,152
Proposed bridge crossings (roadway/canal/environmental crossings) ¹	Number of Crossings	29	31	30	32	28
Total length of all crossings (roadway/canal/environmental crossings) ¹	Feet	20,551	15,866	20,941	16,305	17,899
Roadway/Canal Crossings	Feet	15,244	10,498	16,660	11,963	9,745
Environmental Crossings	Feet	5,307	5,368	4,281	4,342	8,154
Proposed interchanges	Number	4	4	4	4	4
Projected 2050 AADT Volume ²	Number of Vehicles per Day	22,100-46,400	22,100-46,400	32,000-48,200	32,000-48,200	21,500-43,500
US 192 Interchange Access Management Compatibility (low/med/high)	Low/Medium/High	High	High	High	High	Low
Physical						
Major Utility Conflicts - Existing	Number of Conflicts	3	3	3	3	2
Contamination Sites (Medium and High Risk Sites)	Number of Conflicts	8	8	8	8	3
Cultural Environment						
Public Recreation Lands	Acres	0	0	0	0	0
Potential Historic Resources	Number of Conflicts	0	0	0	0	0
Potential Historic Linear Resources (Canals/Highways/Railroads)	Number of Resources	1	1	1	1	1
Potential Archaeological Resources	Number of Resources	0	0	0	0	0
Natural Environment						
Floodplain Involvement - 100 Year Floodplain ³	Acres	390	390	438	438	667
Canals / Regulated Floodways ⁴	Number of Conflicts	1	1	2	2	1
Wetlands (non-forested and forested) ⁵	Acres	269	275	246	251	436
Potential Species Habitat ⁶	Acres	1,008	1,013	985	991	1,107
Conservation Lands ⁷	Acres	0	0	0	0	71
Regulatory Conservation Easement	Acres	0	0	0	0	0
Florida Wildlife Corridor ⁸	Acres	764	761	668	665	1047
Florida Forever Priority Projects (Planned) ⁸	Acres	337	334	242	239	509
SFWMDD DWMP (Watershed Management Program)	Acres	49	49	49	49	49
Social						
Residential Parcels - Existing						
Potential Residential Parcels Affected ^{9,10,12}	Number of Parcels	136	82	137	83	4
<i>Residential Homes</i>	Number of Parcels	121	71	121	71	4
<i>Residential Stormwater and Common Areas</i>	Number of Parcels	15	11	16	12	0
Potential Residential Parcels Affected ^{9,10,12}	Acres	45	67	51	73	8
<i>Residential Homes</i>	Acres	20	57	20	57	8
<i>Residential Stormwater and Common Areas</i>	Acres	25	10	31	16	0
Residential Parcels - Planned						
Potential Residential Parcels Affected ^{9,13}	Number of Parcels	181	161	181	161	31
Potential Residential Parcels Affected ^{9,13}	Acres	47	44	47	44	8
Non-Residential Parcels						
Total Potential Non-Residential Parcels Affected ^{9,11}	Number of Parcels	7	14	7	14	14
Community Cohesion Effects - Existing/Planned Neighborhoods Affected	Low/Medium/High	High	High	High	High	Low
Community Facilities	Number of Conflicts	0	0	0	0	0
Agricultural Lands	Acres	847	849	849	849	818
Suburban Estates Impacts (approximate)	Acres	28	28	0	0	28
Preliminary Estimated Cost						
Total Construction Cost	Currency (in millions)	\$1,945	\$1,820	\$1,970	\$1,840	\$2,020
Preliminary Right-of-Way Cost	Currency (in millions)	\$230	\$260	\$230	\$260	\$80
Estimated Total Project Cost	Currency (in millions)	\$2,175	\$2,080	\$2,200	\$2,100	\$2,100

Advisory Group and Stakeholder Feedback

Environmental Stewardship Committee (ESC) & Environmental Advisory Group (EAG)

- Minimize impacts to **environmentally-sensitive lands**
- **Preserve natural resources**
- Avoid impacts to Florida Wildlife Corridor
- Florida Forever priority areas
- Investigate opportunities to maintain wildlife habitat connectivity
- Maintain SFWMD water management areas
- Minimize effects on drainage, floodplains and wetland connectivity
- **Desire to avoid growth outside Urban Growth Boundary**
- Connectivity to existing conservation
- **Considerations for environmental mitigation (additional bridging and conservation land opportunities)**

Project Advisory Group (PAG)

- **Avoidance of existing residential areas and planned residential developments**
- Suggestion to consider future expansion and multimodal transportation options
- Expressed importance of continued coordination with **related projects** and ongoing development in the areas

Community Engagement Group (CEG)

- Concerns for **effects to existing and planned residential areas and neighborhoods**
- Avoid and **minimize impacts to natural and social impacts**

Public Information Meeting (March 2025)

- Prefer corridor options with **least impacts to residential communities**
- Concerns over **impacts to Suburban Estates and natural environment**

Next Steps

Refine Build Alternative

Minimize impacts

Detailed interchange concepts

Environmental bridge locations

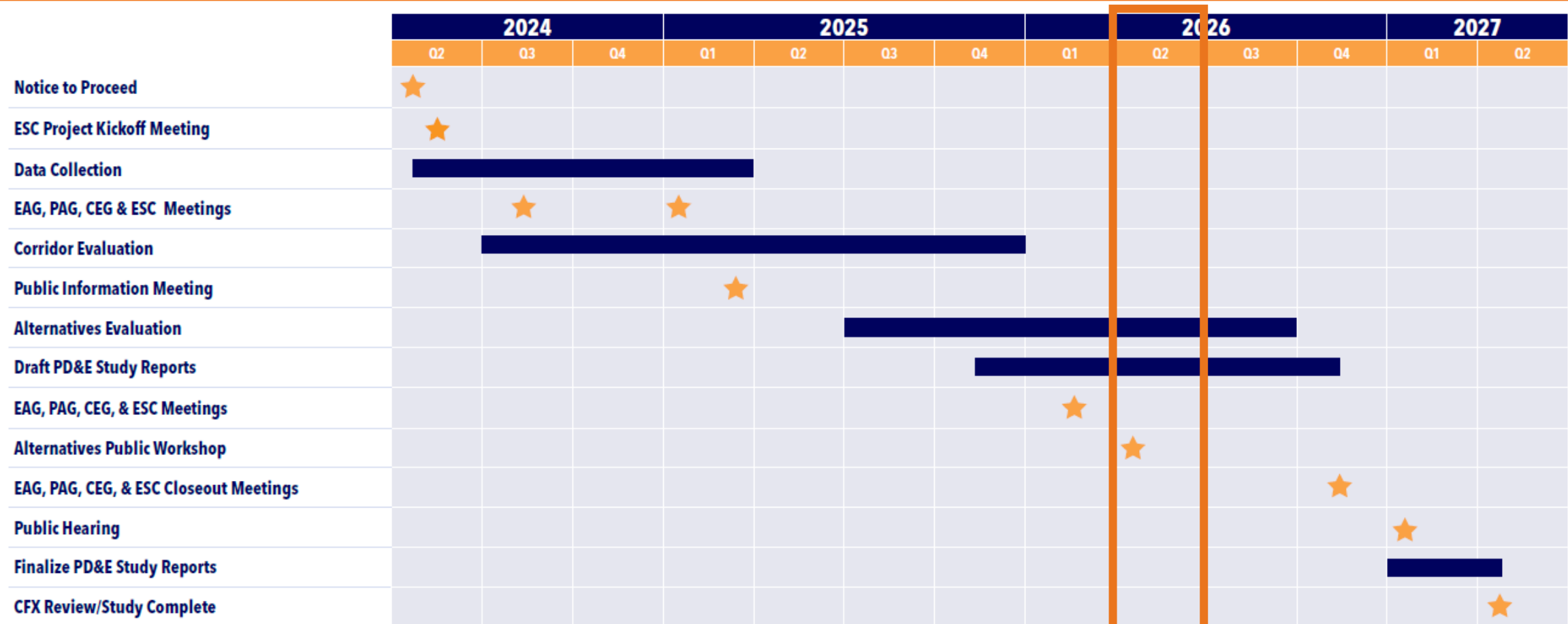
Conduct Detailed Studies

- Natural Resources
- Cultural Resources
- Noise
- Drainage
- Floodplains
- Aesthetics
- Traffic
- Utilities
- Contamination

Prepare Project Environmental Impact Report (PEIR)

Present results for input at Public Hearing

PD&E Schedule



Public Involvement Opportunities

Shortened study website address:

https://bit.ly/sr515_pde

CFX Web Address:

www.CFXway.com



Nick Lulli

Public Involvement Coordinator

407-885-4743

ProjectStudies@CFXway.com



The screenshot shows the website for the SR 515 Northeast Connector Expressway Phase 2 PD&E Study. The header includes the Central Florida Expressway Authority logo and navigation links for E-PASS LOGIN, PAY YOUR INVOICE, FAQs, CONTACT US, and social media icons. The main content area features the project title and a 'Go Back' button. The 'About the Study' section describes the project's scope and objectives, including providing additional east-west routes within the project area.

Project Development & Environment (PD&E) Study:
SR 515 Northeast Connector Expressway Phase 2
PD&E Study

[Go Back](#)

About the SR 515 Northeast Connector Expressway Phase 2 Project Development and Environment (PD&E) Study

The proposed State Road 515 Northeast Connector Expressway Phase 2 envisions linking Florida's Turnpike (SR 91) northeast to US 192 and extending north toward the future SR 534, segments of which are presently in the design phase.

The Project Development and Environment (PD&E) Study will consider, analyze, and evaluate the location and potential phasing of an approximately 15-20-mile expressway connection from Florida's Turnpike (SR 91) northeast to US 192 and north to SR 534. This study will build upon the conclusions of the previous Northeast Connector Expressway Concept, Feasibility, and Mobility (CF&M) Study, the Northeast Connector Expressway Extension CF&M Study, as well as the Central Florida Expressway Authority (CFX) 2045 Master Plan.

The study objectives include:

- Providing additional east-west routes within the project area

Additional SR 515 Northeast Connector Expressway Phase 2 PD&E Information

Email: ProjectStudies@CFXway.com
Phone: 407-885-4743

Central Florida Expressway Authority

[4974 ORL Tower Road Orlando, FL 32807](#)
Phone: (407) 690-5000
Fax: (407) 690-5011
Email: info@CFXway.com



CENTRAL
FLORIDA
EXPRESSWAY
AUTHORITY



Thank You